



AMERICAN

Star

BY **Newmar Corp.**

1987 TRAVEL TRAILERS



Here is the travel trailer that you and your family have been waiting for, The American Star by Newmar Corporation. This handsome unit was designed to fit your pocketbook and to afford American families everywhere the opportunity to enjoy camping in a comfortable, roomy travel trailer that also leaves room in your budget to make that getaway vacation you've dreamed of. So many travel trailers in this price range seem to sacrifice appearance, quality and livability in order to offer a coach at an affordable price, but not American Star.

This fine series of travel trailers offers standard features like a full 91½" interior width for extra room and comfort, generous interior storage and wardrobe space, solid oak doors with genuine inlaid cane panels, beautiful interior decors like the Rose Quartz (AS7-34) shown here with color-coordinated draperies and roller shades, large double porcelain sinks, and the designer beige and blues with color-keyed spoked wheels on the exterior.

American Star is beauty and comfort combined with quality construction that Newmar Corporation has built its reputation on. So compare these great feature-benefits from American Star with the competition and visit your nearest Kountry Aire dealer today to find out why beauty, comfort, quality, and convenience don't have to cost more! When you purchase one of these great travel trailers, we are quite sure the American Star won't be the only star in your family!!

FEATURES THAT WILL BENEFIT YOUR FAMILY!

EXTERIOR

- Std 26" Wide entrance doors for easier, safer entry & exit
- Std Grab handle for safer entry
- Std 24" Radius entrance step
- Std Dual 20 lb. LP tanks with auto changeover
- Std 12-volt battery mounted on "A" frame
- Std Nightlight package
- Std R-5 insulation
- Std Travel awning (front)
- Std Front utility light for convenience in checking or filling LP tanks or hitching up in nighttime conditions
- Std Designer beige exterior metal with blue colored graphics and color-keyed spoked wheels (15")
- Std Whitewall tires (H 78 15)
- Std Large rear exterior storage compartment for those hard-to-store golf clubs, lawn furniture, etc.

INTERIOR

- Std Full 91½" interior width for more room and comfort
- Std 6'6" interior height for the tall stars in your family
- Std Flex-O-Lator dinette seating
- Std Deluxe sleeper sofa and other quality furniture in residential styling and comfort
- Std Quality color-coordinated draperies and roller shades
- Std 4 beautiful color decor packs to choose from
- Std Long-lasting, easy-to-clean vinyl-clad oak and decorative paneling
- Std Solid oak doors (with genuine inlaid cane panels in kitchen/dining area)
- Std Large double porcelain sinks & matching porcelain oven/range
- Std Generous interior storage space and wardrobes
- Std Large pantry will accept all sizes and shapes of food containers
- Std Refrigerator and furnace with direct-start ignition
- Std Large picture windows
- Std 8 popular floor plans to choose from (19' to 35' lengths)
- Std Larger 54-gallon above-floor fresh-water tanks, utilizes entire capacity of water in tank
- Std No obstruction under sink — extra storage

Rose Quartz
AS7-32



4 Standard Color Decor Packages

Mocha Chip
AS7-35

Misty Pewter
AS7-34

Peach Pearl
AS7-33



Full 91½" interior width.

Your nearest American Star Dealer:



Newmar Corporation
P.O. Box 30 — 355 N. Delaware
Nappanee, IN 46550-0030
(219) 773-7791

Prices and spec's are subject to change without written notice at Newmar's discretion with no obligation.



AMERICAN

Star

BY Newmar Corp.



1987 RECREATIONAL VEHICLES

The American Star line of recreational vehicles — Travel Trailers, Fifth Wheels and Mini Homes — is a quality, wooden framed line that affords American families everywhere the opportunity to enjoy one of America's fastest growing recreations, Camping. These fine RVs are so competitively priced, so attractive inside and out, so well put together and practical that we feel confident that more and more first-time buyers are going to think of Newmar Corporation's American Star line automatically when they are ready to purchase their first new recreational vehicle.

All American Star vehicles feature a full 91 1/2" interior width and 6'6" interior height in towables, with a full 6'6" interior height in the mini home. This means more space for your comfort and convenience. All American Stars offer standard: Solid oak doors • Genuine inlay cane panels in kitchen/dining areas • Many popular floorplans and options as well as four beautiful interior decor packages. You'll also find standards like large double porcelain sinks, color-coordinated draperies and roller shades and smart exterior colors and graphics in designer beige and blues.

... Corporation has built its
... with the competition and visit your nearest Kountry Aire dealer
... and convenience don't have to cost more! When you purchase one of
... these ... Quite certain the American Star won't be the only star in your family!!

FEATURES THAT WILL BENEFIT YOUR FAMILY!

EXTERIOR

- Std 26" Wide entrance doors for easier, safer entry & exit
- Std Grab handle for safer entry
- Std 24" Radius entrance step
- Std Dual 20 lb. LP tanks with auto changeover (towables)
- Std 12-volt battery (in addition to chassis battery on motorized)
- Std Nightlight package
- Std R-5 insulation
- Std Travel awning (front - travel trailers only)
- Std Front utility light for convenience in checking or filling LP tanks or hitching up in nighttime conditions (towables)
- Std Designer beige exterior metal with blue colored graphics
- Std Color-keyed spoke wheels (towables)
- Std Chrome wheel covers (motorized)
- Std Whitewall tires
- Std Large rear exterior storage compartment

INTERIOR

- Std Full 91 1/2" interior width for more room and comfort
- Std 6'6" interior height for the tall stars in your family (towables)
- Std 7' interior height in mini homes
- Std Flex-O-Lator dinette seating
- Std Deluxe sleeper sofa and other quality furniture in residential styling and comfort
- Std Quality color-coordinated draperies and roller shades
- Std 4 beautiful color decor packs to choose from
- Std Long-lasting, easy-to-clean vinyl-clad oak and decorative paneling
- Std Solid oak doors (with genuine inlaid cane panels in kitchen/dining area)
- Std Large double porcelain sinks & matching porcelain oven/range
- Std Generous interior storage space and wardrobes
- Std Large pantry will accept all sizes and shapes of food containers
- Std Refrigerator and furnace with direct-start ignition
- Std Large picture windows (towables)
- Std Larger 54-gallon above-floor fresh-water tanks, utilizes entire capacity of water in tank (towables)
- Std No obstruction under sink — extra storage

Rose Quartz
AS7-32

Misty Pewter
AS7-34

4 Standard Color Decor Packages

Mocha Chip
AS7-35

Peach Pearl
AS7-33

AMERICAN
Star

BY **Newmar Corp.**

Your nearest American Star Dealer:



Newmar Corporation
P.O. Box 30 — 355 N. Delaware
Nappanee, IN 46550-0030
(219) 773-7791

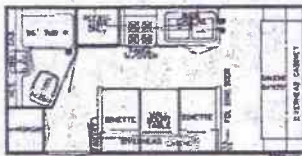


AMERICAN

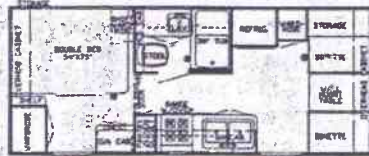
Star BY **Newmar Corp.**

1987 TRAVEL TRAILERS

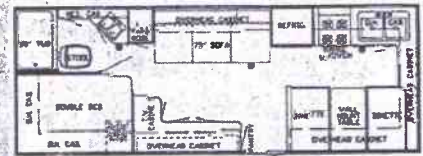
19' REAR BATH DINETTE



23' CENTER BATH DINETTE



25' FRONT KITCHEN DINETTE

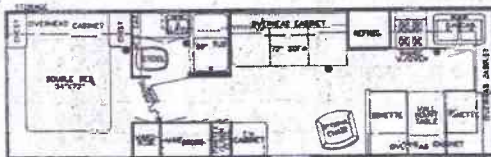


OPTION



OPTION

29' FRONT KITCHEN DINETTE



29' CENTER BATH DINETTE



OPTION

33' CENTER BATH BUNK

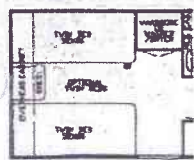


OPTION

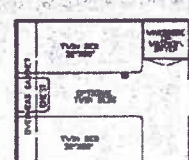
33' FRONT KITCHEN DINETTE



35' CENTER BATH DINETTE



OPTION



OPTION

BY **Newmar Corp.**

Newmar Corporation
P.O. Box 30
Nappanee, IN 46550-0030

PRICES AND SPECS ARE SUBJECT TO CHANGE WITHOUT WRITTEN
NOTICE AT **NEWMAR'S** DISCRETION WITH NO OBLIGATION.

ACCOMODATIONS

Flexilator Dinette * Full Bath w/Tub Shower Combination

GALLEY

Combination LP/Electric RV106 Refrigerator * 4-Burner Range * 12V Range Hood
Light, Fan * Porcelain Double Bowl Sink w/Cover * Picture Window at Dinette
(N/A on 23 CBD & 33 CBB) * Pantry/Shelves w/Large front lip

INTERIOR DECOR PACKAGES

Rose Quartz (AS7-32), Peach Pearl (AS7-33), Misty Pewter (AS7-34),
Mocha Chip (AS7-35)

HEATING/COOLING

Electronic Ignition, Duct Heat (19'-25' 19,500 BTU's, 29'-35' 25,000 BTU's)
* Roof Reinforced for Air Conditioner

SELF-CONTAINMENT

54 Gal Polyethylene Fresh Water Tank (42 gal on 19 RBD) * 26 gal Polyethylene
Grey * 40 gal Sewage Tank * Demand Water System w/12V Pump * City Water Hook Up

ELECTRICAL

30 AMP 110V Service * 40 AMP Converter w/charger * 12v Incadescent Lights
w/clear lens * Exterior Recept * Exterior Lights * Wire for Stereo * Wire for
4 Speakers * Wire for TV Antenna * TV Jack * Battery 80 AMP

EXTERIOR

1 Piece Metal Roof * 26" Exterior Door w/Window * Standard Roof Vents w/Smoke
Dome

TIRES

5 x 15 Whitewall (8.55 x 15 - 35 CBD) * Load Range "C"

DIMENSIONS	19 RBD	23 CBD	25 FKD	29 CBD	29 FKD	33 FKD	33 CBB	35 CBD
Gross Dry Weight (Approximate)	3430	3955	4290	4880	4920	5420	5420	5655
Hitch Dry Weight	*	*	*	510	*	*	*	*
Axle Dry Weight	*	*	*	4370	*	*	*	*
GVWR (Gross Vehicle Weight Rating)	*	*	*	6600	*	*	*	*
Height	106"	106"	106"	106"	106"	106"	106"	106"
Width	96"	96"	96"	96"	96"	96"	96"	96"
Length	19' 11"	23' 5"	25' 8"	29' 7"	30' 1"	33' 2"	33' 2"	34' 8"
Sleeping Accomodations	4	4	6	6	6	6	9	6

* Not Available at time of printing

POPULAR OPTIONS: TRAVEL TRAILER

Fome Cor Insulation
Dead Bolt Lock
30 lb. LP Bottles
L.P. Bottle Cover
Rear travel awning
Side Awning - A/E
Chrome bumper cover
Spare Tire/Carrier
Fold range cover
tub surround
Bath decor package
Counter top extension
Occasional Chair
Cabinet Bunk
TV Antenna

Twin, Queen Beds
Bed Spreads, Double, Queen, Twin
Roof Air, 11,000 & 13,500 BTU
Heat strip for air
32,000 BTU furnace (29'-35')
8' Double door refer
Stabilizer Jacks (4)
Magic Chef Microwave
10 Gal. Gas/Elec Water Heater (29'-35')
Power roof vent
Power bath vent
Monitor panel
Am/Fm stereo - 12 volt
Antenna & 4 speakers
Extra TV Jack