

Kountry Aire

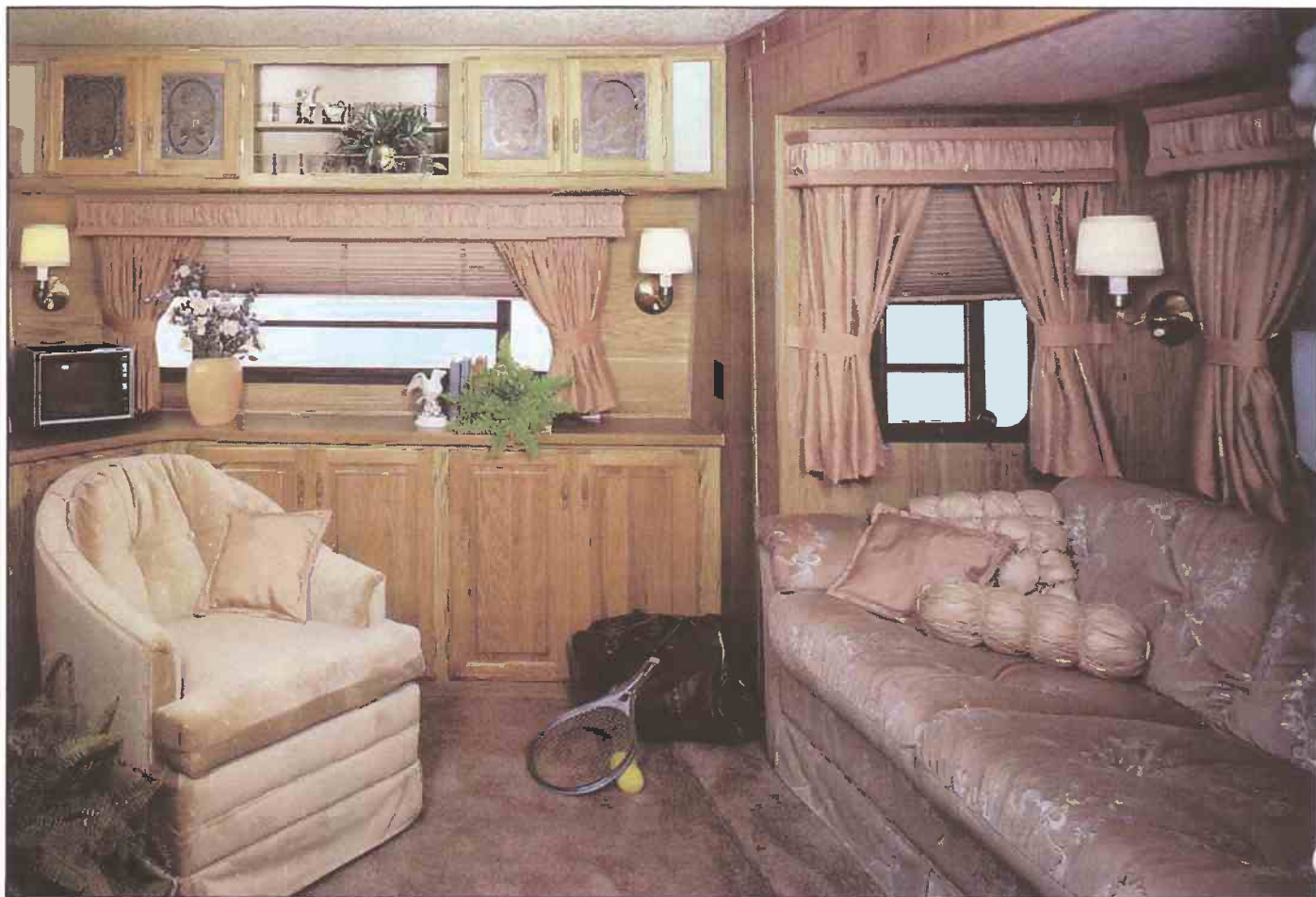


1987



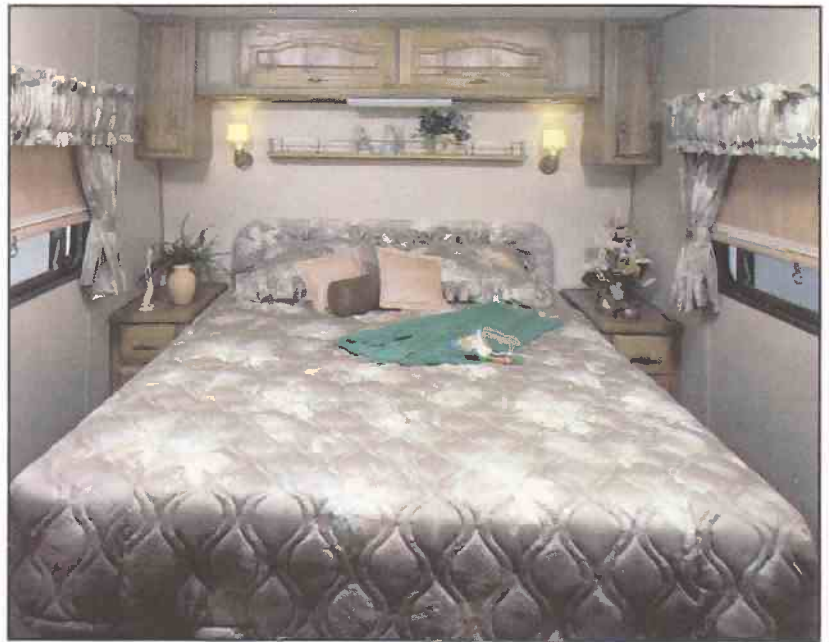
BY **Newmar Corp.**





Kountry Aire is the name that Newmar Corporation was founded on and remains a consistently trusted, quality built product that RV'ers in the past and presently continue to rely on for above average durability and dependability. It's a matter of attention given to details, the little extras that keep people coming back to Kountry Aire. This high set of standards carries into our 1987 product line-up and this 37' walk-thru, raised floor/dinette model fifth wheel is a perfect example.

The #KA7-36 (Sandlewood Buff) interior shown here is just one of four beautiful options available this year in the Kountry Aire line and here are just some of the great standards and options: Standard solid oak doors and paneling • Standard polar white exterior color with earth tone graphics • Standard fiberglass front and rear caps and aluminum exterior on towables • Standard all fiberglass exteriors on motorized/optional on towables • Standard, our exclusive central air system • Standard all aluminum superstructure • Optional roll down vinyl stone guard (towables) • Standard sliding bumper tray/spare tire carrier • Stand-up bedroom (fifth wheels) • Optional power slide-outs and many more (see specs and floor plans).



#KA7-36
Sandlewood Buff



#KA7-38
Ocean Jade



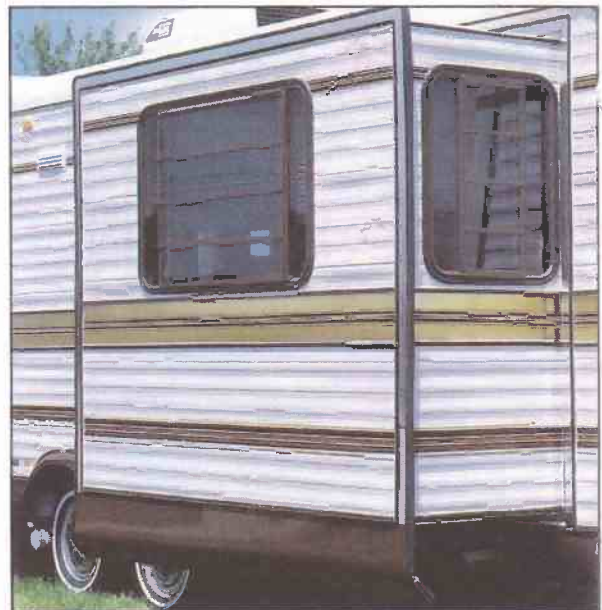
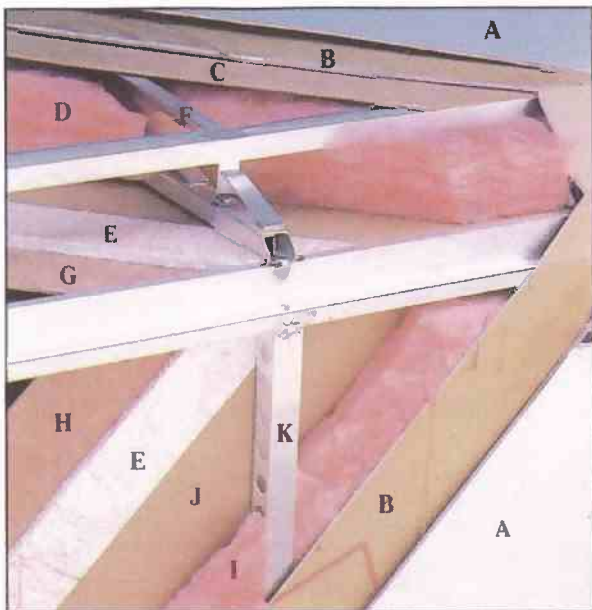
#KA7-37
Mauve Quartz



#KA7-39
Sable Brown



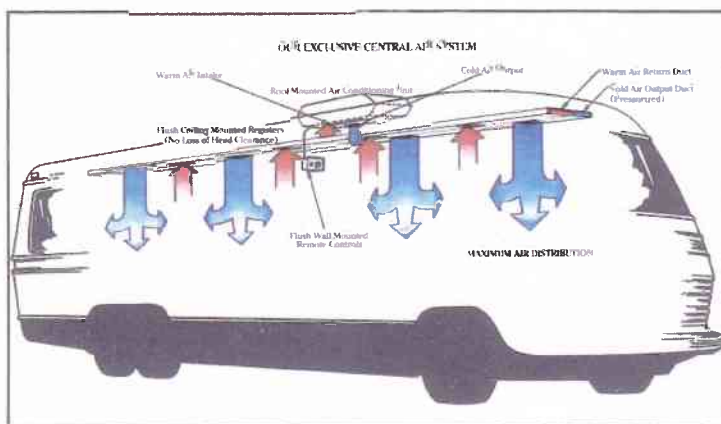
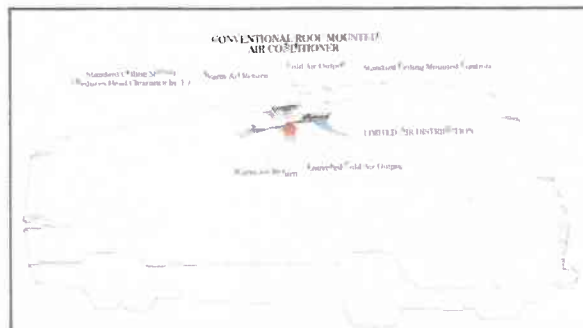
Every unit in the Kountry Aire line whether it be the Fifth Wheel, Travel Trailer, Class A Motorhome or the Mini Motorhome, includes extras, details, appearance and quality that you would expect from high-end competition. Your investment in a Kountry Aire recreational vehicle will be well spent and certainly enjoyed by you and your entire family. Comfort and convenience don't just happen! Years of experience in camping and manufacturing recreational vehicles combine to give you a camping vehicle that you can use and trust for years to come. So visit your nearest Kountry Aire dealer today for complete details and pricing and see for yourself what we mean when we say: "Kountry Aire . . . a name you can trust!"



Optional Power Slide Out

KOUNTRY AIRE ALUMINUM SUPERSTRUCTURE

- A Fiberglass or Aluminum Exterior (see specs)
- B Fome-Cor Insulation
- C Plywood Backer
- D R-10 Fiberglass Insulation
- E $\frac{5}{8}$ " Bead Foam Insulation
- F Truss Style Roof Rafter 16" Center
- G Ceiling Material
- H Interior Paneling
- I R-5 Fiberglass Insulation
- J Craft Paper
- K $1\frac{1}{2}$ " Aluminum C Channel



Standard Sliding Bumper Tray/Spare Tire Carrier

Your nearest Kountry Aire dealer:



Newmar Corporation, P.O. Box 30
Nappanee, IN 46550-0030, (219) 773-7791
Scheduled plant tours Monday-Friday

Prices and specs are subject to change without written notice
at Newmar's discretion with no obligation.



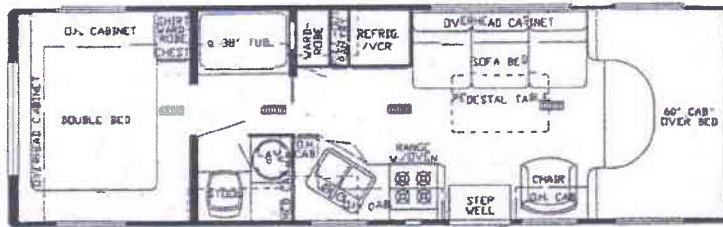
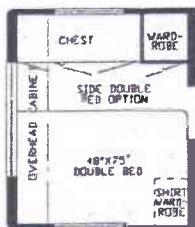
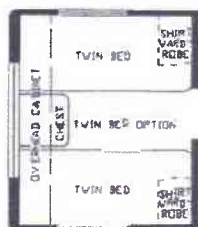
1987 MINI HOMES

SPECIFICATIONS & FLOOR PLANS

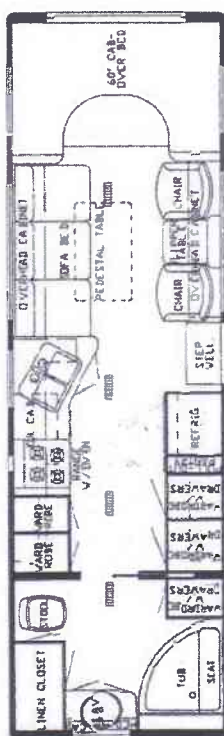


Newmar Corporation
P.O. Box 30
Nappanee, IN 46550-0030 (219) 773-7791

28 WCB



28 RB



28 RBB



28 RBD



28 SB



| DIMENSIONS | 28 RB | 28 RBB | 28 RBD | 28 SB | 28 WCB |
|------------------------|--------|--------|--------|--------|--------|
| Gross Dry Weight | 11,600 | 11,600 | 11,600 | 11,600 | 11,600 |
| Front Axle Weight | 3,600 | 3,600 | 3,600 | 3,600 | 3,600 |
| Rear Axle Weight | 8,000 | 8,000 | 8,000 | 8,000 | 8,000 |
| GWR | 13,000 | 13,000 | 13,000 | 13,000 | 13,000 |
| Interior Height | 6'6" | 6'6" | 6'6" | 6'6" | 6'6" |
| Exterior Height w/Air | 10'10" | 10'10" | 10'10" | 10'10" | 10'10" |
| Width | 7'9" | 7'9" | 7'9" | 7'9" | 7'9" |
| Length | 28'5" | 28'5" | 28'5" | 28'5" | 28'5" |
| Wheel Base | 176" | 176" | 176" | 176" | 176" |
| Sleeping Accomodations | 4 | 4 | 6 | 6 | 6 |

KOUNTRY AIRE MINI HOMES STANDARD EQUIPMENT

AIR CONDITIONING, HEATING & LP GAS

Air Conditioning 13.5 central * Heat Under Floor Ducted * Furnace 32M Electronic Ignition (28'-29') * L.P. Gas Tank 15 Gal. * Air Conditioning Prep for Reg.(w/wiring)

APPLIANCES & ACCESSORIES

Bathroom Accessories Package (towel bar/soap dish/tissue holder/towel ring) * Robe Hook * Towel Rack in Bath Area (where Appl) * Faucet for Sink Single Handle Mixing (Chrome Tone) * Faucet for Lavatory Double Handle Mixing (Chrome Tone) * Faucet for Shower Double Handle Mixing w/Spigot (Chrome Tone) * Sink Deep Double Stainless Steel * Sink Large Lavatory Cultured Marble * Sink Covers Laminated (1) * Stool Aqua Magic * Tub/Shower Fiberglass * Water Heater Gas 6 Gal. w/Electric Ignition * Microwave Prep (Range 4-Burner 22" w/Top Pilot/Oven * Range Cover Bi-Fold Deluxe * Range Hood w/Light & Fan * Refrigerator Dometic 763 AES (110V-gas)(up-29')

CABINETS & FURNITURE

Bed Double (75") * Headboards Decorative * Sofa Bed Built In * Cabinet Medicine * Cabinet Night Stand * Cabinetry Oak w/Raised Panel Doors * Catches Spring * Chair(s) Barrel * Doors or Drawers under Dinette for Easy Access * Drawer w/Silverware Tray * Pantry Slide-out * Dinette w/Flex-a-lator & Fabric Covered Ends * Snack Tray on Engine Cover w/Cassette Holder * Table Between Barrel Chairs * Table Free Standing Pedestal

CHASSIS FEATURES

Brakes Power * Cruise Control * Gasoline Fuel Capacity 42 Gal.(Ford) * Heater/Air Conditioner High Output Automotive * Power Door Locks * Power Windows * Power Steering * Steering Wheel Tilt * Tinted Windshield * Automatic Transmission

ELECTRICAL & LIGHTING EQUIPMENT

Antenna for Radio * Antenna for TV & 2 Jacks * Battery 80 AMP * Battery Automotive * Battery Isolator * Clock for AM/FM Stereo * Converter 40 AMP w/Charger * Electrical Service 30 AMP * Generator 4.0kw Onan w/1 Remote Switch & Auto Changeover * Lights 10" Behind Glass Doors * Lights in Wardrobe Auto. * Lights Backup * light Exterior w/Inside Switch * Lights Running & Backup Recessed * Lighting 12V Fluorescent * Monitor Panel Deluxe w/Clock * Radio AM/FM Stereo w/Cassette 4 Speakers (CB Models 6 Speakers) * Recept 110V GFI (interior & exterior)

EXTERIOR ACCESSORIES

Bumper Front Auto Style * Bumper Rear Auto Style w/Storage Compartment * Exterior Front & Rear Fiberglass * Exterior Sides Fiberglass * Mirrors Exterior * Running Boards Aluminum * Step Double 12V Auto. w/Non Skid Surface * Storage Compartment under Bed w/Exterior Door * Storage Exterior Slide Out Drawer 29"

INTERIOR FEATURES

Cabinet Doors w/Decorative Etched Glass * Carpet w/Pad Throughout * Ceiling Woven Soft Touch * Door Header Cushioned * Mirror w/Decorative Wood Frame * Paneling Oak Hardwood * Paneling Textured Light Color in Bedroom * Paneling Decorative Vinyl in Bath Area * 6'6" Interior Height * Privacy Drapes (lined) for Windshield * Window Treatment Soft Shade Blinds w/Tie Back Drapes/Valance(living area) * Window Treatment Coordinated Roller Shades w/Tie Back Drapes/Valance(Bedroom) * Window Treatment Mini Blinds Kitchen & Bath Windows

PLUMBING SYSTEMS

Tank Gray Water 25 Gal * Tank Sewage Holding 25 Gal * Water Capacity 42 Gal * Water System Demand with 5/8" Polybutylene Lines * Hook-up for City Water

RUNNING GEAR & CONSTRUCTION

Floor 1" Laminated Plywood * Insulation 1/4" Fome-Cor on Exterior Roof * Insulation 1/4" Fome-Cor in Sidewalls, Roof & Floor * Insulation Additional R5 Fiberglass in Roof & Floor * Insulation Laminated 5/8" Foam in Sidewalls & Ceiling * Jack Hydraulic (6 ton) * Mud Flaps (front & rear) * Shock Absorbers * Spare Tire, Wheel, in Slide Out Tray * Structure Aluminum 16" Centers Sidewalls & Roof * Suspension Mor-Ryde Tag Axle * Tires Radial (Ford) * Wheel Covers Decorative Deluxe

SAFETY FEATURES

Fire Extinguisher 5 BC * Seat Belts * Shoulder Straps (Driver & Pass Seats) * Smoke Detector

STANDARD SPECIFICATIONS CONTINUED

WINDOWS, DOORS, AWNINGS & VENTS

Awning Rail * Door Wood Folding * Door Entrance 26" w/Flush Latch & Dead Bolt Lock * Door Screen * Grab
Handle * Dead Bolt Locks * Vent in Bath Area w/Wall Switch 12V * Windows Radius Slider Tinted Safety Glass *
Window Radius Picture 30" x 48" at Dinette * Screens-Sliding

KOUNTRY AIRE MINI HOME OPTIONAL EQUIPMENT

AIR CONDITIONING, HEATING & LP GAS

Furnace Next Size Larger ILO of Std
Dual Fuel Conversion w/41 Gal. LP Tank-Ex Ca

APPLIANCES & ACCESSORIES

Rod For Clothes in Tub/Shower
Water Heater Bypass Kit
Water Purifying System (Sink cold & Icemaker)
Food Center Nutone (blender & mixer)
Grill Gas Portable
Ice Maker (110V)
Ice Maker Prep
Microwave Oven (Magic Chef)
Microwave Oven Spacemaker G.E.
Microwave Oven Convection w/4 Burner Plate ILO Std.
Refrigerator Dometic 3800 AES ILO 763 (110V-Gas)(up-
29)
Safe
Vacuum System Portable

CABINETS & FURNITURE

Bed Twin ILO Double
Counter Top Extension
Drawers Wooden w/Metal Guides & Side Rollers

ELECTRICAL & LIGHTING EQUIPMENT

Battery 80 AMP Deep Cycle ILO Std (Sears Die Hard)
Batteries 80 AMP Deep Cycle ILO Std-2(Sears Die
Hard)
Battery Disconnect
CB Radio w/Antenna
Generator 4.0kw Onan w/1 Remote Sw & Auto
Changeover
LP Gas Conversion for Gen.

Lights fog
Lights Docking
Lights Interior Courtesy
Lights Exterior Security (ea)
Radio Jack & Headphone
Recept 110V (extra)
Switch 110V (extra)
TV Color AC/DC Built in
TV Jack Extra
TV Cable Hook up
Telephone Jack
VCR w/Newmar Tape
VCR prep

EXTERIOR ACCESSORIES

Ladder & Roof Rack
Running Boards Fiberglass
Storage Roof Pod 10 cu./ft.
Storage Roof Pod 21 cu./ft.

INTERIOR FEATURES

Bedsprad(s) Quilted w/Matching Sham Twin
Bedsprad(s) Quilted w/Matching Sham Double
Ceiling Vinyl Automotive Headliner ILO Soft Touch
Paneling Wood Grain Throughout (Oak)

RUNNING GEAR & CONSTRUCTION

Hitch for Towing Car w/Wire Connector

SAFETY FEATURES

Customer Pick up
Fire Extinguisher 10 BC ILO 5 BC
LP Leak Detector (In Line)

WINDOWS, DOORS, AWNINGS & VENTS

Awning(s) Window Off Door Side (ea)(A&E 8000)
Awning(s) Window Off Door Side (ea)(A&E 9000)
Awning Side (A&E 8000)
Awning Side (A&E 9000)
Center Support for Side Awning
Door Bell
Vent in Roof 12V
Skylight in Bathroom

Prices and Specifications are subject to change
without Notification.