

Kountry Aire

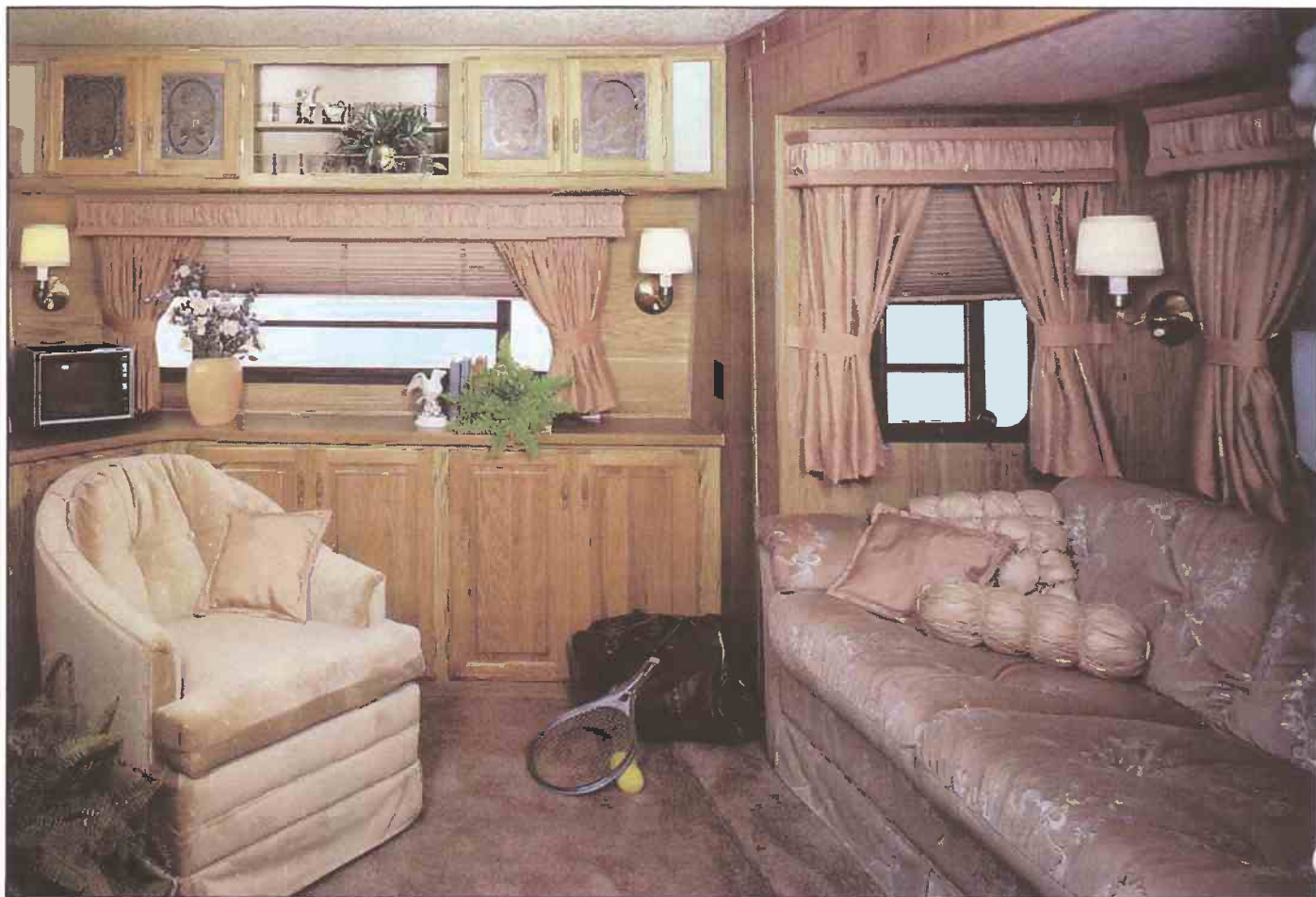


1987



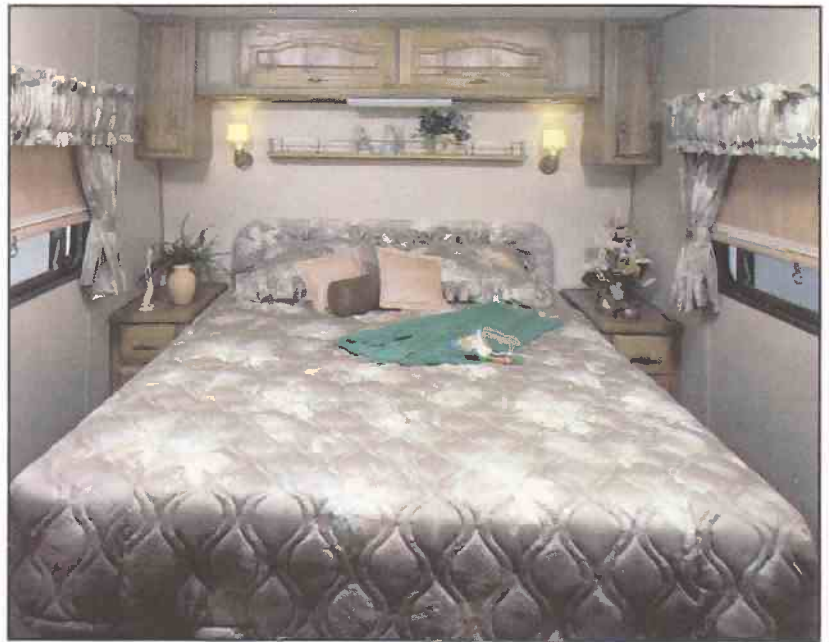
BY **Newmar Corp.**





Kountry Aire is the name that Newmar Corporation was founded on and remains a consistently trusted, quality built product that RV'ers in the past and presently continue to rely on for above average durability and dependability. It's a matter of attention given to details, the little extras that keep people coming back to Kountry Aire. This high set of standards carries into our 1987 product line-up and this 37' walk-thru, raised floor/dinette model fifth wheel is a perfect example.

The #KA7-36 (Sandlewood Buff) interior shown here is just one of four beautiful options available this year in the Kountry Aire line and here are just some of the great standards and options: Standard solid oak doors and paneling • Standard polar white exterior color with earth tone graphics • Standard fiberglass front and rear caps and aluminum exterior on towables • Standard all fiberglass exteriors on motorized/optional on towables • Standard, our exclusive central air system • Standard all aluminum superstructure • Optional roll down vinyl stone guard (towables) • Standard sliding bumper tray/spare tire carrier • Stand-up bedroom (fifth wheels) • Optional power slide-outs and many more (see specs and floor plans).



#KA7-36
Sandlewood Buff



#KA7-38
Ocean Jade



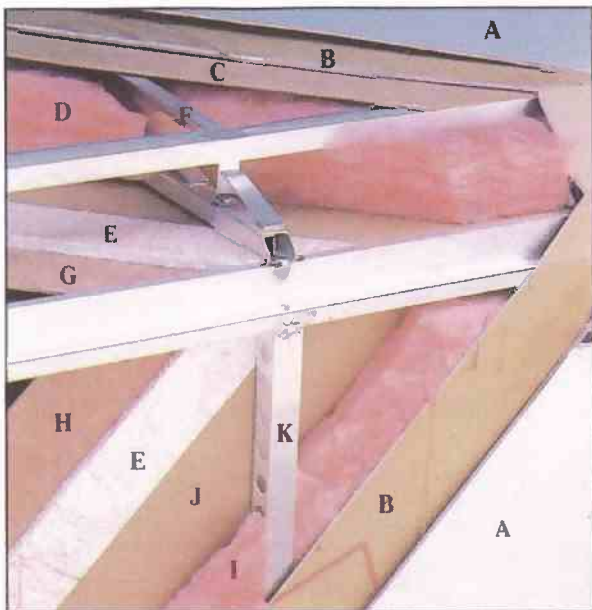
#KA7-37
Mauve Quartz



#KA7-39
Sable Brown



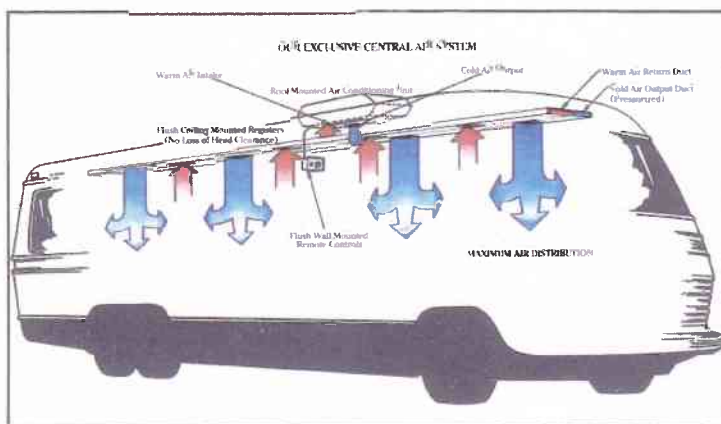
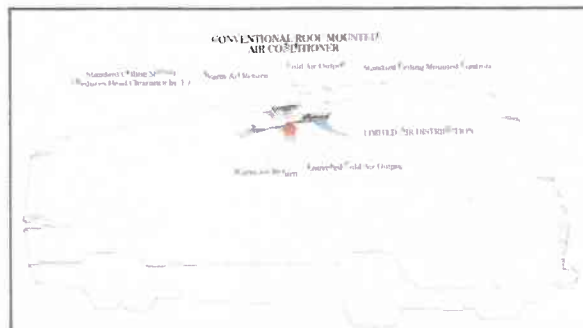
Every unit in the Kountry Aire line whether it be the Fifth Wheel, Travel Trailer, Class A Motorhome or the Mini Motorhome, includes extras, details, appearance and quality that you would expect from high-end competition. Your investment in a Kountry Aire recreational vehicle will be well spent and certainly enjoyed by you and your entire family. Comfort and convenience don't just happen! Years of experience in camping and manufacturing recreational vehicles combine to give you a camping vehicle that you can use and trust for years to come. So visit your nearest Kountry Aire dealer today for complete details and pricing and see for yourself what we mean when we say: "Kountry Aire . . . a name you can trust!"



Optional Power Slide Out

KOUNTRY AIRE ALUMINUM SUPERSTRUCTURE

- A Fiberglass or Aluminum Exterior (see specs)
- B Fome-Cor Insulation
- C Plywood Backer
- D R-10 Fiberglass Insulation
- E $\frac{5}{8}$ " Bead Foam Insulation
- F Truss Style Roof Rafter 16" Center
- G Ceiling Material
- H Interior Paneling
- I R-5 Fiberglass Insulation
- J Craft Paper
- K $1\frac{1}{2}$ " Aluminum C Channel



Standard Sliding Bumper Tray/Spare Tire Carrier

Your nearest Kountry Aire dealer:



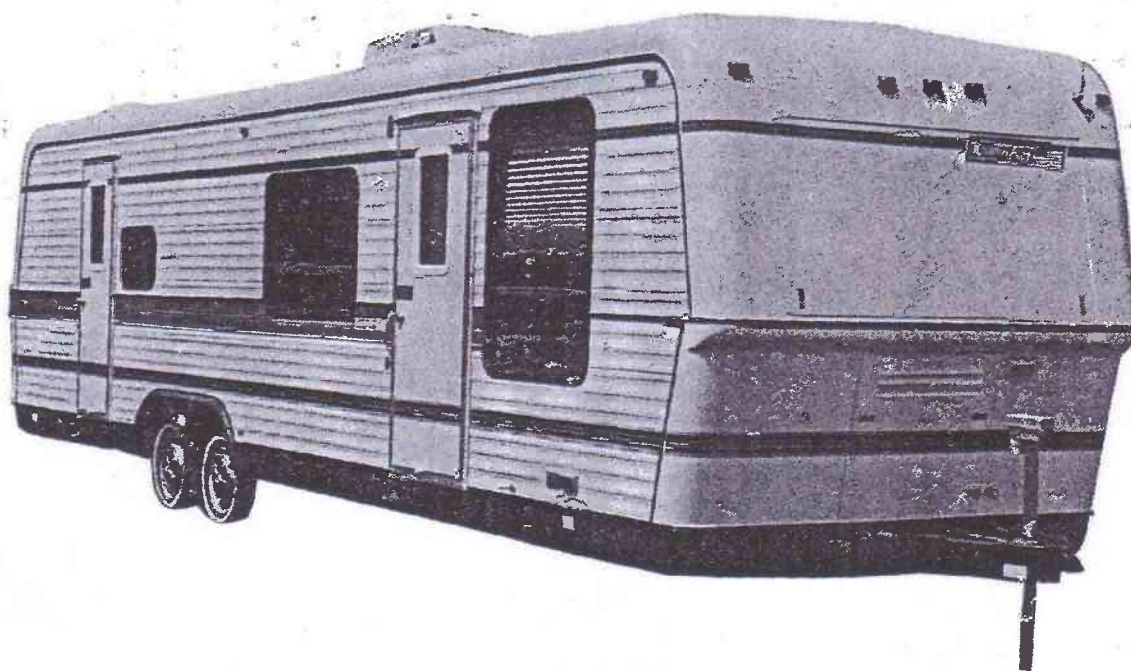
Newmar Corporation, P.O. Box 30
Nappanee, IN 46550-0030, (219) 773-7791
Scheduled plant tours Monday-Friday

Prices and specs are subject to change without written notice
at Newmar's discretion with no obligation.



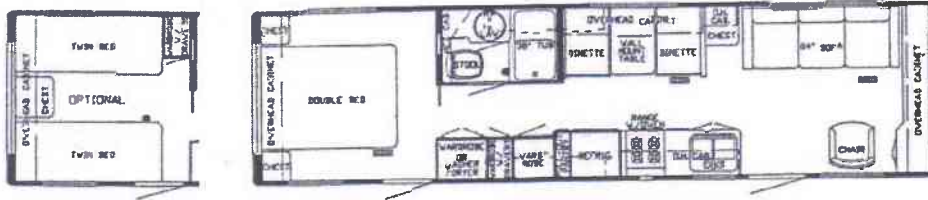
1987 TRAVEL TRAILER

SPECIFICATIONS & FLOOR PLANS

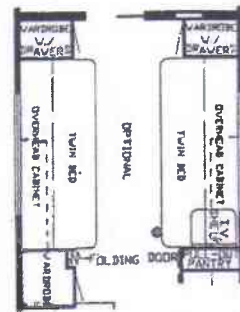


Newmar Corporation
P.O. Box 30
Nappanee, IN 46550-0030 (219) 773-7791

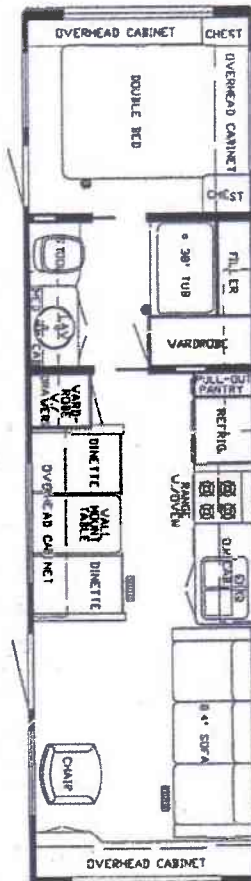
35 CBD



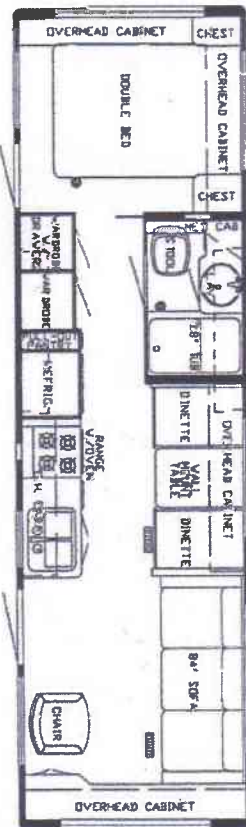
33 RBD



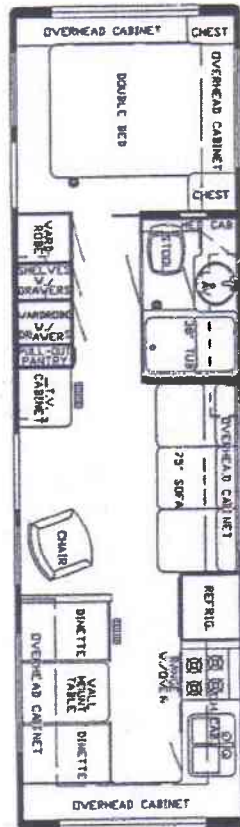
33 CBD



31 CBD



31 FKD



DIMENSIONS	31 CBD	31 FKD	33 CBD	33 RRD	35 CBD
Gross Dry Weight	6,600	6,600	6,800	6,800	6,900
Hitch Dry Weight	700	700	800	800	800
Axle Dry Weight	5,900	5,900	6,000	6,000	6,100
Gvwr	8,000	8,000	8,500	8,500	8,500
Interior Height	6'6"	6'6"	6'6"	6'6"	6'6"
Exterior Height w/Air	10'3"	10'3"	10'3"	10'3"	10'3"
Width	7'9"	7'9"	7'9"	7'9"	7'9"
Length	31'10"	31'10"	33'9"	33'9"	34'10"
Sleeping Accomodations	6	6	6	6	6

KOUNTRY AIRE TRAVEL TRAILERS STANDARD EQUIPMENT

AIR CONDITIONING, HEATING & LP GAS

Air Conditioning 13.5 central * Heat Under Floor Ducted * Furnace 35M Electronic Ignition (31'-35') * Air Conditioning Prep for Regulator * L.P. Gas Bottles 2-30# Steel w/Auto Reg.

APPLIANCES & ACCESSORIES

Bathroom Accessories Package (towel bar/soap dish/tissue holder/towel ring) * Towel Rack in Bath Area (where Appl) * Faucet for Sink Single Handle Mixing Chrome Tone * Faucet for Lavatory Double Handle Mixing (Chrome Tone) * Faucet for Shower Double Handle Mixing w/Spigot (Chrome Tone) * Sink Deep Double Stainless Steel * Sink Large Lavatory * Sink Covers Laminated (1) * Stool Aqua Magic * Tub/Shower Fiberglass * Water Heater Gas/Elect 10 Gal. * Microwave Prep * Range 4-Burner 22" w/Top Pilot/Oven * Range Cover Bi-Fold Deluxe * Range Hood w/Light & Fan * Refrigerator Dometic 3800 AES (110V-Gas)(31' & up)

CABINETS & FURNITURE

Bed Double (75") * Headboards Decorative * Spring Lifts for Convenient Under-bed Storage (queen, Double & bed) * Sofa Bed Free Standing * Sofa Bed Built In * Bookcase Angle Cabinet w/TV Shelf (Oak) * Cabinet China * Cabinet Medicine * Cabinet Night Stand * Cabinetry Oak w/Raised Panel Doors * Catches Spring * Doors under Dinette for Easy Access * Drawer w/Silverware Tray * Hamper/Storage * Pantry Slide-out * Dinette w/Flex-a-lator & Fabric Covered Ends * Wardrobe Shirt

ELECTRICAL & LIGHTING EQUIPMENT

Antenna for Radio * Antenna for TV & 2 Jacks * Battery 80 AMP * Battery Box on Slides * Converter 40 AMP w/Charger * Electrical Service 30 AMP * Lights 10" Behind Glass Doors * Light Fixture Deluxe Over Dinette * Lights in Wardrobe Auto. * Lights Backup * Light Exterior w/Inside Switch * Lights for Hook-up Convenience * Light Running & Backup Recessed * Light for Service * Lighting 12V Fluorescent * Monitor Panel Deluxe w/Clock * Radio AM/FM Stereo w/Cassette 4 Speakers (CB Models 6 Speakers) * Recept 110V GFI (interior & exterior) * TV Shelf w/Remote Switch (bedroom)

EXTERIOR ACCESSORIES

Bumper Rear Auto Style w/Storage Compartment * Exterior Front & Rear Fiberglass * LP Gas Bottles Concealed * Step Double Manual w/Non Skid Surface * Storage Exterior Slide Out Drawer 48"

INTERIOR FEATURES

Cabinet Doors w/Decorative Etched Glass * Carpet w/Pad Throughout * Ceiling Vinyl Clad * Mirror w/Decorative Wood Frame * Paneling Oak Hardwood * Paneling Textured Light Color in Bedroom * Paneling Decorative Vinyl in Bath Area * Wall Decorative Vinyl in Living Area * 6'6" Interior Height * Window Treatment Soft Shade Blinds w/Tie Back Drapes/Valance (living area) * Window Treatment Coordinated Roller Shades w/Tie Back Drapes/Valance (bedroom) * Window Treatment Mini Blinds Kitchen & Bath Windows

PLUMBING SYSTEMS

Tank Gray Water 48 Gal * Tank Sewage Holding 48 Gal * Water Capacity 42 Gal * Water System Demand with 5/8" Polybutylene Lines * Hook-up for City Water

RUNNING GEAR & CONSTRUCTION

Axle 4" Drop w/12" Electric Brakes * Floor 1" Laminated Plywood * Frame Size 8" I-Beam * Insulation 1/4" Fome-Cor on Exterior Sidewalls * Insulation Additional R5 Fiberglass in Sidewalls, Roof & Floor * Insulation Laminated 5/8" Foam in Sidewalls & Ceiling * Jack Stabilizer (set of 4) * Jack for Hitch (2000#) * Shock Absorbers * Skid Straps * Spare Tire, Wheel, in Slide Out Tray * Structure Aluminum 16" Centers Sidewalls & Roof * Underbelly Enclosed w/Lam. 5/8" Foam * Wheels 15" White Spoked

SAFETY FEATURES

Break Away Switch * Fire Extinguisher 5 BC * Safety Chains * Smoke Detector

WINDOWS, DOORS, AWNINGS & VENTS

Awning Front Recessed * Awning Rail * Door Woven Folding * Door Entrance 30" w/Flush Latch & Dead Bolt Lock * Door Secondary 26" * Door Screen * Door Bell * Grab Handle * Dead Bolt Locks * Vent in Bath Area w/Wall Switch 12V * Windows Radius Torqued Tinted Safety Glass * Window Radius Picture 30" x 48" at Dinette

KOUNTRY AIRE TRAVEL TRAILER OPTIONAL EQUIPMENT

AIR CONDITIONING, HEATING L.P. GAS

Air Conditioning Extra 13.5 Central w/wiring
Furnace next Size Larger ILO Std.
L.P. Gas Bottles 2-40# ILO 30# Steel w/Auto Reg
L.P. See Level Guages

APPLIANCES & ACCESSORIES

Sink Larger Double Stainless Steel ILO Std.
Tub 40" w/Remainder Wardrobe ILO Std
Rod For Clothes in Tub/Shower
Water Heater Bypass Kit
Reignitor 12V for 10 Gal w/Heater
Water Purifying System (Sink Cold & Ice maker)
Food Center Nutone (blender & mixer)
Grill Gas Portable
Ice Maker (110V)
Ice Maker Prep
Microwave Oven (Magic Chef)
Microwave Oven Spacemaker G.E.
Microwave Oven Convection w/4 Burner Plate ILO Std.
Safe
Vacuum System Portable
Water Heater Bypass
Washer & Dryer
Washer & Dryer Prep - Plumbing, Elec/Recept & Shelf

CABINETS & FURNITURE

Bed Twin ILO Double
Bed Queen (where applicable)(60"x 80")
Bunk Stationary 32" w/5" foam Mattress
Cabinet Overhead Extra
Chair(s) Swivel Rocker ILO Std.
Chair Wood Folding
Counter Top Extension
Drawers Wooden w/Metal Guides & Side Rollers
Bar (Table Height)
Dinette Free Standing w/2 Chairs ILO Built-In
Table Hi-Lo
Table Wall Mount

ELECTRICAL & LIGHTING EQUIPMENT

Battery 80 AMP Deep Cycle ILO Std(Sears Die Hard)
Batteries 80 AMP Deep Cycle ILO Std-2(Sears Die Hard)
Electrical Service 50 AMP ILO 30
Intercom System
Lights Exterior Security (ea)
Plug & Bracket for Tow Vehicle
Recept 110V (extra)
Switch 110V (extra)
TV Color AC/DC w/Remote Control
TV Jack Extra
TV Cable Hook up
Telephone Jack
VCR w/Newmar Tape
VCR prep

EXTERIOR ACCESSORIES

Exterior Sides Fiberglass
Ladder w/Hinge & Roof Rack
Slide Out 94" w/Lights
Slide Out 74" w/Lights
Stone Guard Pull Down Vinyl
Storage Exterior Slide Out Drawer 29"
Storage Extra Exterior Slide Out Drawer 29"
Storage Roof Pod 10 cu./ft.
Storage Roof Pod 21 cu./ft.

INTERIOR FEATURES

Bedsread(s) Quilted w/Matching Sham Twin
Bedsread(s) Quilted w/Matching Sham Double
Bedsread(s) Quilted w/Matching Sham Queen
Floor Covering Vinyl ILO of Carpet
Ceiling Vinyl Automotive Headliner ILO std.
Paneling Wood Grain Throughout (Oak)

PLUMBING SYSTEMS

Heat Pads for Holding Tanks
Sewage Rinse

RUNNING GEAR & CONSTRUCTION

Jack(s) for Hitch 12V power
Jack(s) prep 12V wire
Tires Radial ILO Std. (set of 5)

SAFETY FEATURES

Customer Pick up
Fire Extinguisher 10 BC ILO 5 BC
LP Leak Detector (In Line)

WINDOWS, DOORS, AWNINGS & VENTS

Awning Rear Recessed
Power for recessed Awning
Awning(s) Window Off Door Side (ea)(A&E 8000)
Awning(s) Window Off Door Side (ea)(A&E 9000)
Awning Side (A&E 8000)
Awning Side (A&E 9000)
Center Support for Side Awning
Door Bell
Vent in Roof 12V
Window Rad. Picture 48"x24"
Window Rad. Picture 48"x36"
Window Rad. Picture 48"x48"
Windows Storm Set (29"-40")
Windows Storm Set for Slide Out
Skylight in Bathroom

Prices and Specifications are subject to change
without Notification.