

London Aire



1987





LONDON AIRE'S PLUSH INTERIOR DECORS

#LA7-40



Porcelain Taupe

#LA7-41

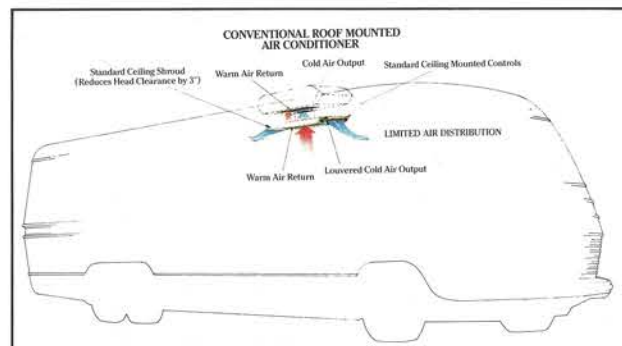


Sterling Silver

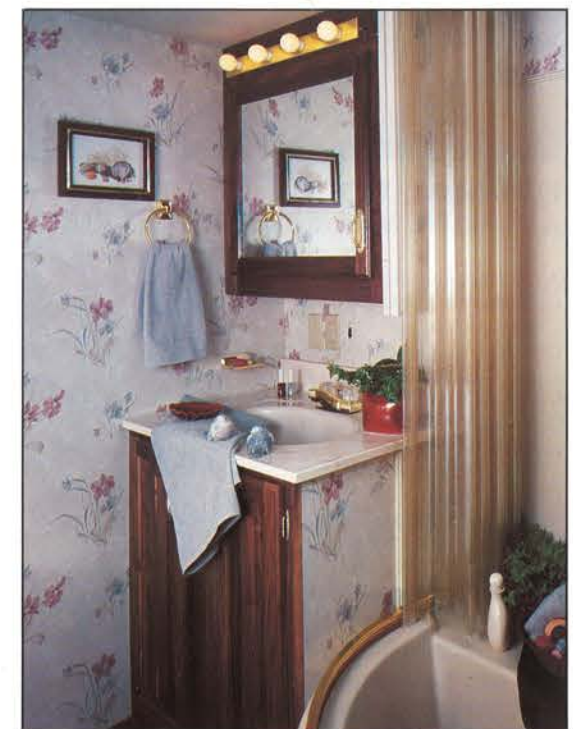
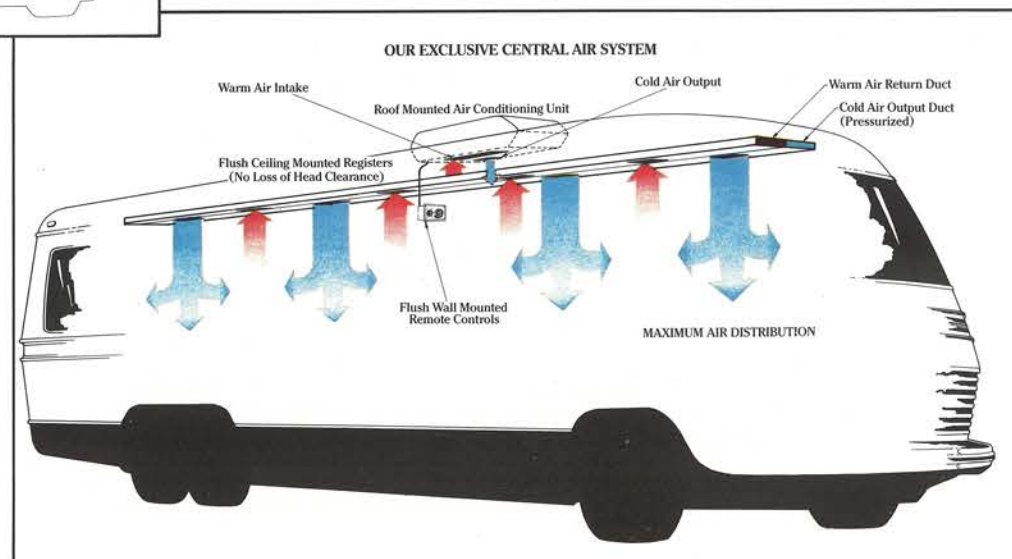
Unique, standard feature-benefits can be found inside and out and here are just a few: Our exclusive central air system • Rear backing monitor system • A signed and certified original oil painting • Ice maker • Nutone food center • Leaded glass doors • Combination convection/microwave oven with 4-burner range • Corner vanity • All high gloss gel coated fiberglass exteriors • Pearl gray and black exterior colors accented with the stately burgundy and blue oxford striping • Automotive style lower fiberglass wrap with built in fold down front access step • Flush-mount weather tight storage drawer • Front air spoiler • Rear bumper compartment • Concealed sliding spare tire carrier • Automatic rewinding water hose and shoreline • Automatic hydraulic leveling jacks • 4-way power, heated side mirrors — and the list goes on and on. (See spec's and floorplans).

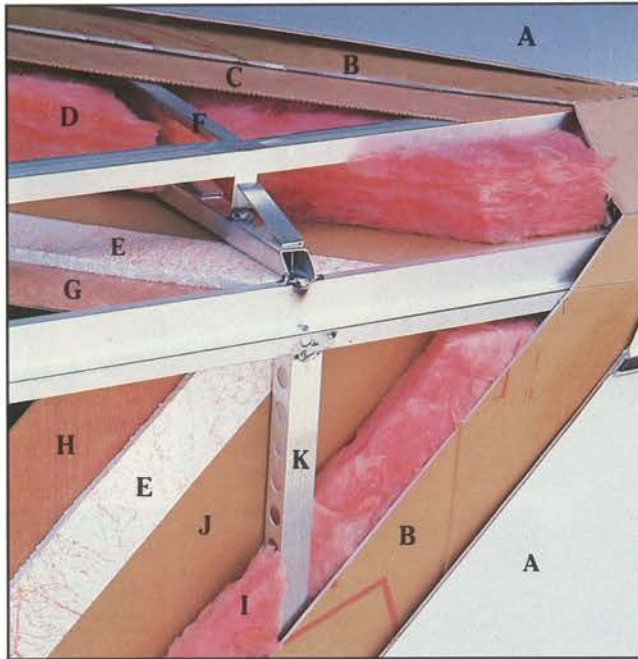
It's obvious that London Aire is the ultimate in RVs whether you choose the Class A Motorhome, the Class C Mini Motorhome, the Fifth Wheel or the Travel Trailer. Most of these great standard features and more, plus all the elegance carry through the entire London Aire line.

So, if it's a statement that you are trying to make about yourself, your standards of living, or your taste for the finer things in life, the statement will be made in two words: London Aire.



Welcome to London Aire by Newmar Corporation: a tour in elegance and luxury! Featured here is our 37' class A motorhome complete with the plush interior decor #LA7-41 (Sterling Silver) shown here. The interior from the cockpit to the rear bedroom is a blend of rich fabrics, solid walnut paneling and cabinetry, decorative paneling, brass (all standard) and feature-benefits that will make your traveling experience convenient and a true delight.





Our new lower all-fiber-glass automotive wrap with front air spoiler and built-in convenience step/license plate carrier.



Our new docking lights built right into the lower wrap to protect them and to reduce wind drag. Makes parking at night much easier and safer!

LONDON AIRE ALUMINUM SUPERSTRUCTURE

- A Fiberglass or Aluminum Exterior (see specs)
- B Fome-Cor Insulation
- C Plywood Backer
- D R-10 Fiberglass Insulation
- E $\frac{3}{8}$ " Bead Foam Insulation
- F Truss Style Roof Rafter 16" Center
- G Ceiling Material
- H Interior Paneling
- I R-5 Fiberglass Insulation
- J Craft Paper
- K $1\frac{1}{2}$ " Aluminum C Channel

Other great standards include: Triple insulation • Double $\frac{1}{2}$ " plywood floors • Large enclosed heated holding tanks • Large fresh water tanks • Exterior slide out battery drawer • Stand up bedroom • All-aluminum superstructure • Flex-O-Lator dinette seating • Tinted safety glass radiused windows



Roll-down vinyl stone guard (towables) • Concealed sliding LP tanks (travel trailers only) • Power travel awnings (towables) • A&E 9000 series side awning, and more! Visit your nearest London Aire dealer today for complete details and pricing.

Your nearest London Aire Dealer:



Newmar Corporation, P.O. Box 30
Nappanee, IN 46550-0030, (219) 773-7791
Scheduled plant tours Monday-Friday

Prices and spec's are subject to change without written notice at Newmar's discretion with no obligation.



1987 MINI HOMES

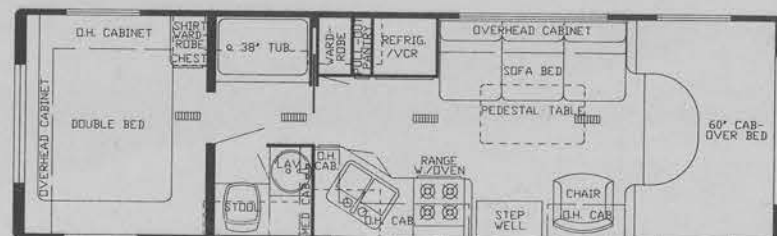
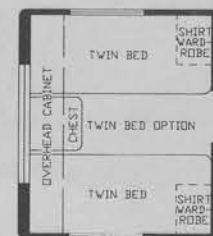
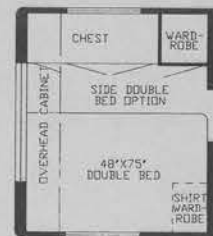
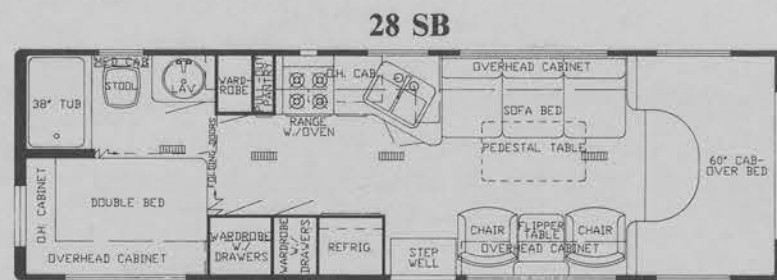
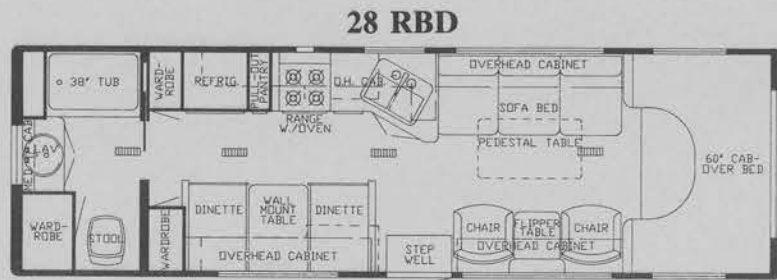
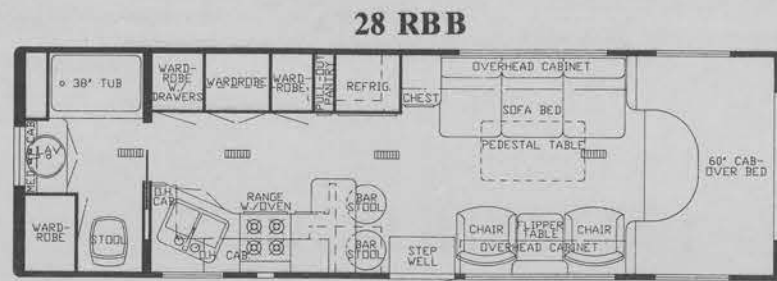
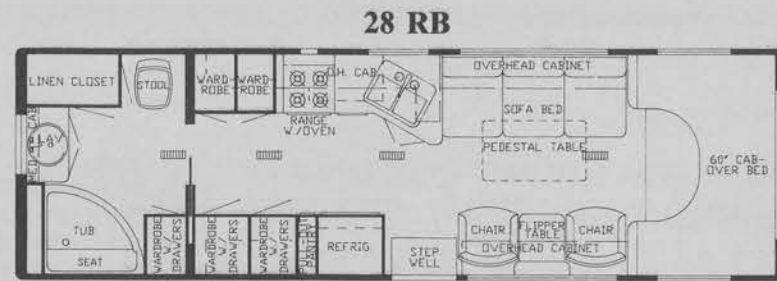
SPECIFICATIONS & FLOOR PLANS



Newmar Corporation

P.O. Box 30

Nappanee, IN 46550-0030 (219) 773-7791



DIMENSIONS	28 RB	28 RBB	28 RBD	28 SB	28 WCB
Gross Dry Weight	11,600	11,600	11,600	11,600	11,600
Front Axle Weight	3,600	3,600	3,600	3,600	3,600
Rear Axle Weight	8,000	8,000	8,000	8,000	8,000
GVWR	13,000	13,000	13,000	13,000	13,000
Interior Height	6'6"	6'6"	6'6"	6'6"	6'6"
Exterior Height w/Air	10'10"	10'10"	10'10"	10'10"	10'10"
Width	7'9"	7'9"	7'9"	7'9"	7'9"
Length	28'5"	28'5"	28'5"	28'5"	28'5"
Wheel Base	176"	176"	176"	176"	176"
Sleeping Accomodations	4	4	6	6	6

STANDARD FEATURES

AIR CONDITIONING, HEATING & LP GAS

Central Air Conditioning 13.5 BTU * Heat Under Floor Ducted * Furnace 32M Electronic Ignition * Dual Fuel Conversion w/41 Gal. LP Tank (except California)

APPLIANCES & ACCESSORIES

Bathroom Accessories Package (Brass Towel Bar/Soap Dish/Tissue Holder/Towel Ring) * Robe Hook * Towel Rack in Bath Area (where Appl) * Faucet for Sink Single Handle Mixing w/Spray Hose * Faucet for Lavatory Double Handle Mixing (Brass) * Faucet for Shower Double Handle Mixing w/Spigot (Brass) * Sink Deep Double Stainless Steel * Sink Large Lavatory Cultured Marble * Sink Covers Hardwood (2) * Stool w/Padded Lid * Tub/Shower Fiberglass * Rod for Clothes in Tub/Shower * Water Heater Gas 6 Gal. w/Electric Ignition * Water Heater Bypass Kit * Water Purifying System (Sink Cold & Ice maker) * Food Center Nutone(Blender & Mixer) * Grill Gas Portable * Ice Maker (110V) * Microwave Oven Convection w/4 Burner Hot Plate * Range Cover Bi-Fold Deluxe * Range Hood w/Light & Fan * Refrigerator Dometic 3800 AES (110V-Gas) * Vacuum System Portable

CABINETS & FURNITURE

Bed Double (75") * Headboards Decorative * Sofa Bed Built In * Cabinet Medicine * Cabinet Night Stand * Cabinetry Walnut w/Raised Panel Doors * Catches Spring * Chair(s) Barrel * Counter Top Extension * Doors or Drawers under Dinette for Easy Access * Drawer w/Silverware Tray * Drawers Wooden w/Metal Guides & Side Rollers * Pantry Slide-out * Dinette w/Flex-a-lator & Fabric Covered Ends * Snack Tray on Engine Cover w/Cassette Holder * Table Between Barrel Chairs * Table Free Standing Pedestal

CHASSIS FEATURES

Brakes Power * Cruise Control * Gasoline Fuel Capacity 42 Gal.(Ford) * Heater/Air Conditioner High Output Automotive * Power Door Locks * Power Windows * Power Steering * Steering Wheel Tilt * Tinted Windshield * Automatic Transmission

ELECTRICAL & LIGHTING EQUIPMENT

Antenna for Radio * Antenna for TV & 2 Jacks * Battery 80 AMP Deep Cycle (Sears Die Hard) * Battery Automotive * Battery Box on Slides * Battery Disconnect * Battery Isolator * CB Radio w/Antenna * Clock for AM/FM Stereo * Converter 40 AMP w/Charger * Electrical Service 30 AMP * Generator 4.0kw Onan w/1 Remote Switch & Auto Changeover * Lights 10" Behind Glass Doors * Light Fixture Deluxe Over Dinette * Lights Fog * Lights Interior Courtesy * Lights in Wardrobe Auto. * Lights Backup * Light Exterior w/Inside Switch * Lights Running & Backup Recessed * Lighting 12V Fluorescent * Monitor Panel Super Deluxe w/Clock & Weather Center * Radio AM/FM Stereo w/Cassette 4 Speakers * Recept 110V GFI (Interior & Exterior) * TV Color AC/DC Built-in * TV Cable Hook up * VCR w/Newmar Tape

EXTERIOR ACCESSORIES

Bumper Front Auto Style * Bumper Rear Auto Style w/Storage Compartment * Exterior Front & Rear Fiberglass * Exterior Sides Fiberglass * Ladder & Roof Rack * Mirrors Exterior * Roof Fiberglass * Running Boards Fiberglass * Step Double 12V Auto. w/Non Skid Surface * Storage Compartment under Bed w/Exterior Door * Storage Exterior Slide Out Drawer 29"

INTERIOR FEATURES

Bedsprad(s) Quilted w/Matching Shams Twin/Double * Cabinet Doors w/Decorative Leaded Glass * Carpet w/Pad Throughout * Ceiling Woven Soft Touch * Door Header Cushioned * Painting Original Oil * Paneling Walnut Hardwood * Paneling Textured Light Color in Bedroom * Paneling Decorative Vinyl in Bath Area * 6'6" Interior Height * Privacy Drapes (Lined) for Windshield * Window Treatment Mini Blinds Kitchen & Bath Window * Window Treatment Wood Mini Blinds, Cornice Board/Drapes/Travis Rod/Tie Backs

PLUMBING SYSTEMS

Tank Gray Water 25 Gal * Tank Sewage Holding 25 Gal * Water Capacity 42 Gal * Water System Demand with 5/8" Polybutylene Lines * Hook-up for City Water

RUNNING GEAR & CONSTRUCTION

Floor 1" Laminated Plywood * Hitch for Towing Car w/Wire Connector * Insulation 1/4" Fome-Cor on Exterior Roof * Insulation R5 Fiberglass in Sidewalls, Roof & Floor * Insulation Additional R5 Fiberglass in Roof & Floor * Jack Hydraulic (6 Ton) * Mud Flaps (Front & Rear) * Shock Absorbers * Spare Tire, Wheel, in Slide Out Tray * Structure Aluminum 16" Centers Sidewalls & Roof * Suspension Mor-Ryde Tag Axle * Tires Radial (Ford) * Wheel Covers Decorative Deluxe

SAFETY FEATURES

Fire Extinguisher 10 BC * LP Leak Detector (In Line) * Seat Belts * Shoulder Straps (Driver & Pass Seats) * Smoke Detector

WINDOWS, DOORS, AWNINGS & VENTS

Awning Rail * Awning Side (A&E 9000) * Door Wood Folding * Door Entrance 26" w/Flush Latch & Dead Bolt Lock * Door Screen * Door Bell * Grab Handle Deluxe * Dead Bolt Locks * Vent in Bath Area w/Wall Switch 12V * Windows Radius Slider Tinted Safety Glass * Window Radius Picture 30" x 48" at Dinette * Screens-Sliding

OPTIONAL FEATURES AVAILABLE

HEATING

Furnace 41 BTU ILO of Standard

ACCESSORIES

Safe (Where Appl)

FURNITURE

Bed Twin ILO Double w/Spread & Shams

ELECTRICAL & LIGHTING EQUIPMENT

Batteries 80 AMP Deep Cycle ILO Standard - 2 (Sears Die Hard)

LP Gas Conversion for Generator

Lights Exterior Security (ea)

Recept 110V (Extra)

Switch 110V (Extra)

TV Jack Extra

Telephone Jack

EXTERIOR ACCESSORIES

Storage Roof Pod 10 cu./ft.

Storage Roof Pod 21 cu./ft.(where applicable)

INTERIOR FEATURES

Ceiling Vinyl Automotive Headliner ILO Soft Touch

Paneling Wood Grain Throughout (Walnut)

SAFETY FEATURES

Customer Pick Up

WINDOWS, AWNINGS & VENTS

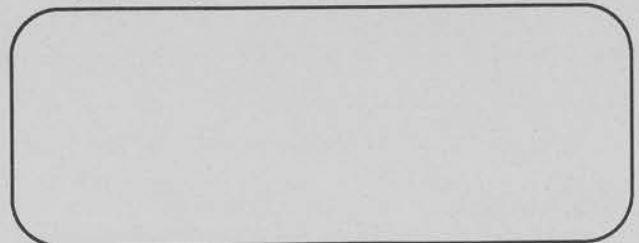
Awning(s) Window Off Door Side (ea)(A&E9000)

Center Support for Side Awning

Vent in Roof 12V

Skylight in Bathroom

NEAREST LONDON AIRE DEALER:



Prices and Specifications are subject to change without Notification.

7/28/86