

London Aire



1987





LONDON AIRE'S PLUSH INTERIOR DECORS

#LA7-40



Porcelain Taupe

#LA7-41

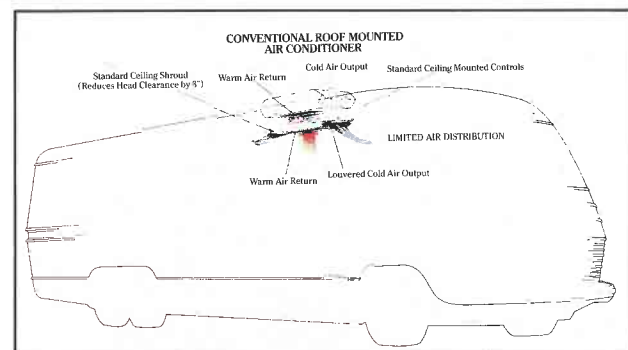


Sterling Silver

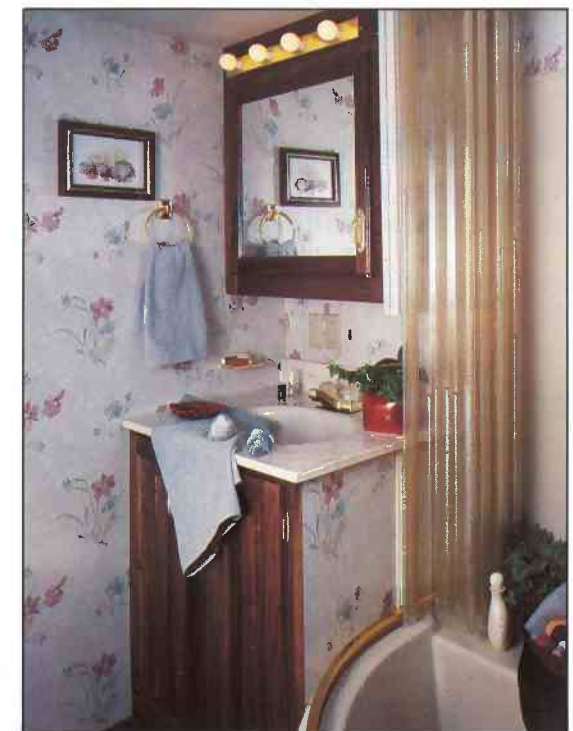
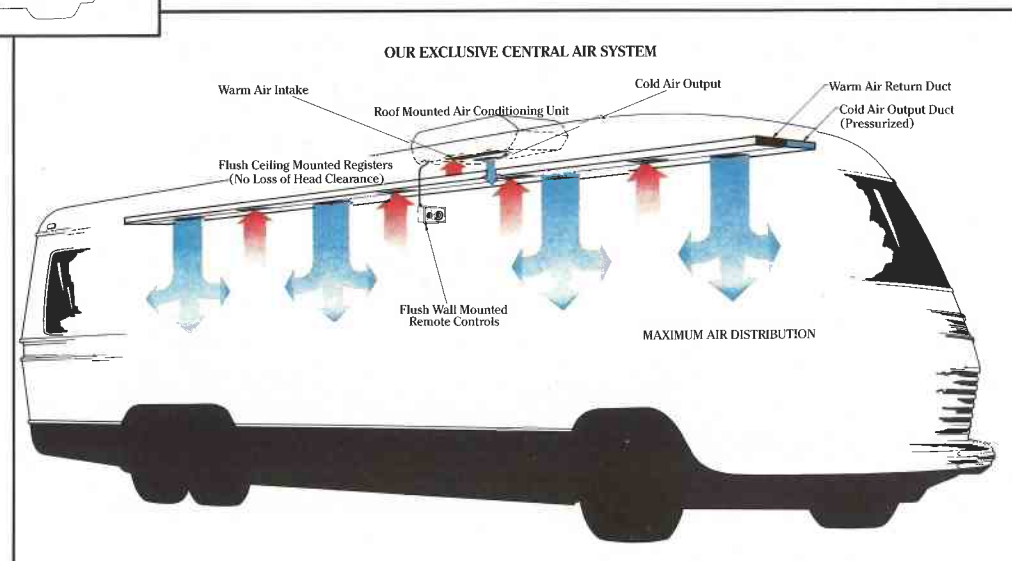
Unique, standard feature-benefits can be found inside and out and here are just a few: Our exclusive central air system • Rear backing monitor system • A signed and certified original oil painting • Ice maker • Nutone food center • Leaded glass doors • Combination convection/microwave oven with 4-burner range • Corner vanity • All high gloss gel coated fiberglass exteriors • Pearl gray and black exterior colors accented with the stately burgundy and blue oxford striping • Automotive style lower fiberglass wrap with built in fold down front access step • Flush-mount weather tight storage drawer • Front air spoiler • Rear bumper compartment • Concealed sliding spare tire carrier • Automatic rewinding water hose and shoreline • Automatic hydraulic leveling jacks • 4-way power, heated side mirrors — and the list goes on and on. (See spec's and floorplans).

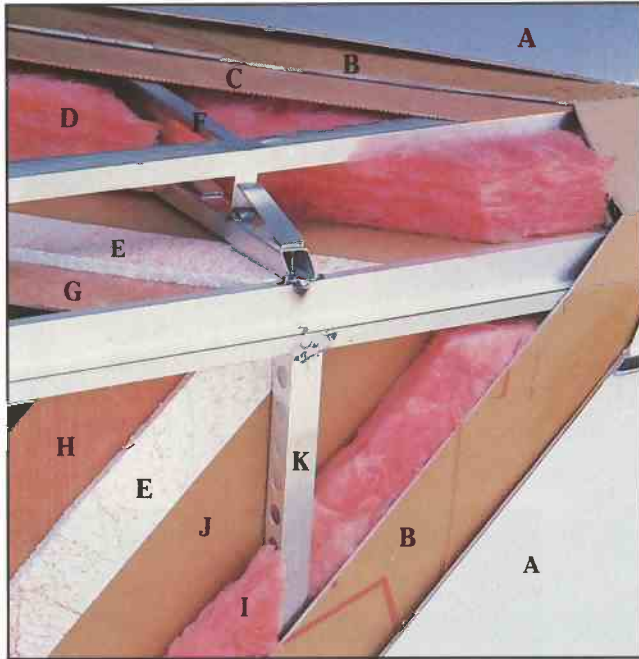
It's obvious that London Aire is the ultimate in RVs whether you choose the Class A Motorhome, the Class C Mini Motorhome, the Fifth Wheel or the Travel Trailer. Most of these great standard features and more, plus all the elegance carry through the entire London Aire line.

So, if it's a statement that you are trying to make about yourself, your standards of living, or your taste for the finer things in life, the statement will be made in two words: London Aire.



Welcome to London Aire by Newmar Corporation: a tour in elegance and luxury! Featured here is our 37' class A motorhome complete with the plush interior decor #LA7-41 (Sterling Silver) shown here. The interior from the cockpit to the rear bedroom is a blend of rich fabrics, solid walnut paneling and cabinetry, decorative paneling, brass (all standard) and feature-benefits that will make your traveling experience convenient and a true delight.





Our new lower all-fiber-glass automotive wrap with front air spoiler and built-in convenience step/license plate carrier.



Our new docking lights built right into the lower wrap to protect them and to reduce wind drag. Makes parking at night much easier and safer!

LONDON AIRE ALUMINUM SUPERSTRUCTURE

- A Fiberglass or Aluminum Exterior (see specs)
- B Fome-Cor Insulation
- C Plywood Backer
- D R-10 Fiberglass Insulation
- E $\frac{5}{8}$ " Bead Foam Insulation
- F Truss Style Roof Rafter 16" Center
- G Ceiling Material
- H Interior Paneling
- I R-5 Fiberglass Insulation
- J Craft Paper
- K $1\frac{1}{2}$ " Aluminum C Channel

Other great standards include: Triple insulation • Double $\frac{1}{2}$ " plywood floors • Large enclosed heated holding tanks • Large fresh water tanks • Exterior slide out battery drawer • Stand up bedroom • All-aluminum superstructure • Flex-O-Lator dinette seating • Tinted safety glass radiused windows



Roll-down vinyl stone guard (towables) • Concealed sliding LP tanks (travel trailers only) • Power travel awnings (towables) • A&E 9000 series side awning, and more! Visit your nearest London Aire dealer today for complete details and pricing.

Your nearest London Aire Dealer:



Newmar Corporation, P.O. Box 30
Nappanee, IN 46550-0030, (219) 773-7791
Scheduled plant tours Monday-Friday

Prices and spec's are subject to change without written notice at Newmar's discretion with no obligation.



1987 TRAVEL TRAILER

SPECIFICATIONS & FLOOR PLANS



Newmar Corporation
P.O. Box 30
Nappanee, IN 46550-0030 (219) 773-7791

STANDARD FEATURES

AIR CONDITIONING, HEATING & LP GAS

Central Air Conditioning 13.5 BTU * Heat Under Floor Ducted * Furnace 35M Electronic Ignition (31'-35') * L.P.Gas Bottles 2-40# Steel w/Auto Reg. * L.P. See Level Guages

APPLIANCES & ACCESSORIES

Bathroom Accessories Package (Brass Towel Bar/Soap Dish/Tissue Holder/Towel Ring) * Robe Hook * Towel Rack in Bath Area (where Appl) * Faucet for Sink Single Handle Mixing w/Spray Hose * Faucet for Lavatory Double Handle Mixing (Brass) * Faucet for Shower Double Handle Mixing w/Spigot (Brass) * Sink Deep Double Stainless Steel * Sink Large Lavatory Cultured Marble * Sink Covers Hardwood (2) * Stool w/Padded Lid * Tub/Shower Fiberglass * Rod for Clothes in Tub/Shower * Water Heater Gas/Elect 10 Gal. * Water Heater Bypass Kit * Reignitor 12V for 10 Gal. w/Heater * Water Purifying System (Sink Cold & Icemaker) * Food Center Nutone(blender & mixer) * Grill Gas Portable * Ice Maker (110V) * Microwave Oven Spacemaker G.E. * Range 4-Burner 22" w/Top Pilot/Oven * Range Cover Bi-Fold Deluxe * Range Hood w/Light & Fan * Refrigerator Dometic 3800 AES (110V-Gas) * Vacuum System Portable

CABINETS & FURNITURE

Bed Double (75") * Headboards Decorative * Spring Lifts for Convenient Under-bed Storage * Sofa Bed Free Standing Or Sofa Bed Built In * Boodcase Angle Cabinet w/TV Shelf (Walnut) * Cabinet China * Cabinet Medicine * Cabinet Night Stand * Cabinetry Walnut w/Raised Panel Doors * Catches Spring * Chair Swivel Rocker * Counter Top Extension * Doors or Drawers under Dinette for Easy Access * Drawer w/Silverware Tray * Drawers Wooden w/Metal Guides & Side Rollers * Pantry Slide-out * Dinette w/Flex-a-lator & Fabric Covered Ends * Table Hi-Lo * Wardrobe Shirt

ELECTRICAL & LIGHTING EQUIPMENT

Antenna for Radio * Antenna for TV & 2 Jacks * Battery 80 AMP Deep Cycle (Sears Die Hard) * Battery Box on Slides * Converter 40 AMP w/Charger * Electrical Service 30 AMP * Lights 10" Behind Glass Doors * Light Fixture Deluxe Over Dinette * Lights in Wardrobe Auto. * Lights Backup * Light Exterior w/Inside Switch * Lights for Hook-up Convenience * Light Running & Backup Recessed * Light for Service * Lighting 12V Fluorescent * Monitor Panel Super Deluxe w/Clock & Weather Center * Plug & Bracket for Tow Vehicle * Radio AM/FM Stereo w/Cassette 4 Speakers * Recept 110V GFI (Interior & Exterior) * TV Color AC/DC w/Remote Control * TV Shelf w/Remote Switch (Bedroom) * TV Cable Hook up * VCR w/Newmar Tape

EXTERIOR ACCESSORIES

Bumper Rear Auto Style w/Storage Compartment * Exterior Front & Rear Fiberglass * Exterior Sides Fiberglass * LP Gas Bottles Concealed * Roof Fiberglass * Step Single Manual w/Non Skid Surface * Stone Guard Pull Down Vinyl * Storage Exterior Slide Out Drawer 48" * Storage Extra Exterior Slide Out Drawer 29" * Storage Exterior Slide Out Drawer 29"

INTERIOR FEATURES

Bedsread(s) Quilted w/Matching Shams Twin/Double/Queen * Cabinet Doors w/Decorative Leaded Glass * Carpet w/Pad Throughout * Ceiling Woven Soft Touch * Door Header Cushioned * Painting Original Oil * Paneling Walnut Hardwood * Paneling Textured Light Color in Bedroom * Paneling Decorative Vinyl in Bath Area * Wall Decorative Vinyl in Living Area * 6'6" Interior Height * Window Treatment Mini Blinds Kitchen & Bath Window * Window Treatment wood Mini Blinds, Cornice Board/Drapes/Travis Rod/Tie Backs

PLUMBING SYSTEMS

Tank Gray Water 48 Gal * Tank Sewage Holding 48 Gal * Water Capacity 42 Gal * Water System Demand with 5/8" Polybutylene Lines * Hook-up for City Water

RUNNING GEAR & CONSTRUCTION

Axle 4" Drop w/12" Electric Brakes * Floor 1" Laminated Plywood * Frame Size 8" I-Beam * Insulation 1/4" Fome-Cor on Exterior Roof * Insulation R5 Fiberglass in Sidewalls & Ceiling * Insulation Additional R5 Fiberglass in Roof & Floor * Insulation Laminated 5/8" Foam in Sidewalls, Roof & Floor * Jack Stabilizer (Set of 4) * Jack for Hitch 12V Power * Shock Absorbers * Skid Straps * Spare Tire, Wheel, in Slide Out Tray * Structure Aluminum 16" Centers Sidewalls & Roof * Tires Radial * Underberlly Enclosed w/Lam. 5/8" Foam * Wheels 15" Polished Aluminum

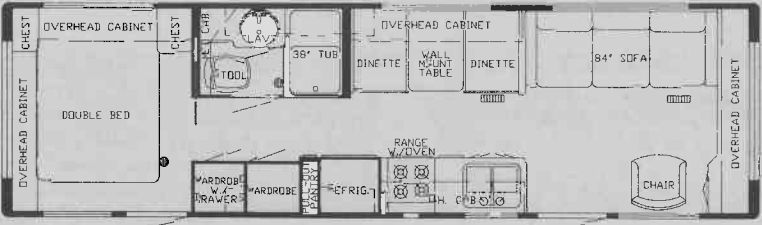
SAFETY FEATURES

Break Away Switch * Fire Extinguisher 10 BC * LP Leak Detector (In line) * Safety Chains * Smoke Detector

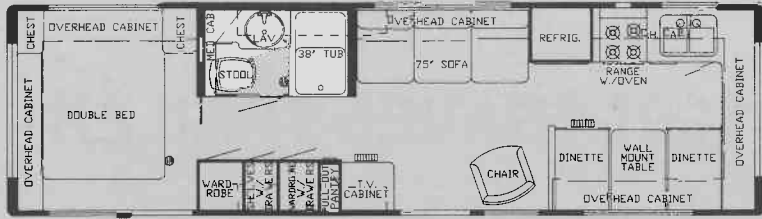
WINDOWS, DOORS, AWNINGS & VENTS

Awning Front Recessed * Awning Rail * Awning Rear Recessed * Power for Recessed Awning * Awning Side (A&E 9000) * Door Wood Folding * Door Entrance 30" w/Flush Latch & Dead Bolt Lock * Door Secondary 26" * Door Screen * Door Bell * Grab Handle Deluxe * Dead Bolt Locks * Vent in Bath Area w/Wall Switch 12V * Windows Radius Torqued Tinted Safety Glass * Window Radius Picture 30" x 48" at Dinette

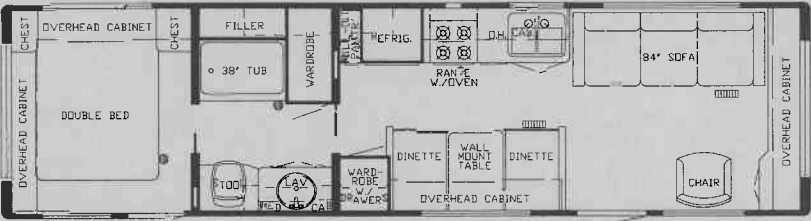
31 CBD



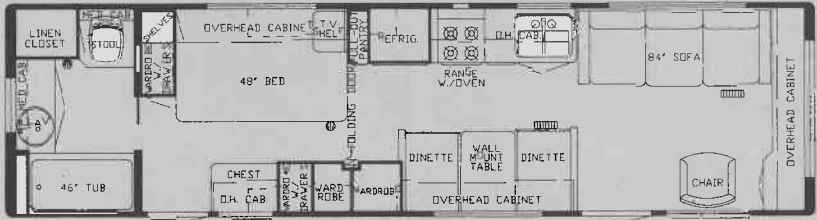
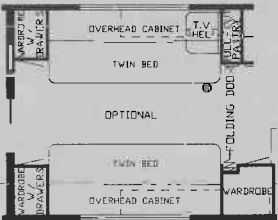
31 FKD



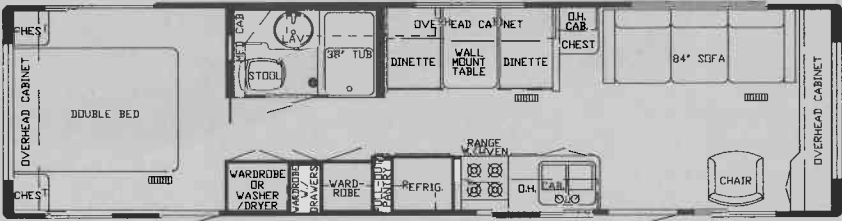
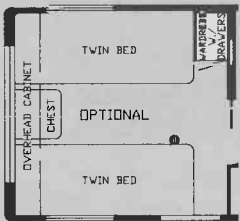
33 CBD



33 RBD



35 CBD



DIMENSIONS	31 CBD	31 FKD	33 CBD	33 RBD	35 CBD
Gross Dry Weight	6,600	6,600	6,800	6,800	6,900
Hitch Dry Weight	700	700	800	800	800
Axle Dry Weight	5,900	5,900	6,000	6,000	6,100
GVWR	8,000	8,000	8,500	8,500	8,500
Exterior Height w/Air	10'3"	10'3"	10'3"	10'3"	10'3"
Width	7'9"	7'9"	7'9"	7'9"	7'9"
Length	31'10"	31'10"	33'9"	33'9"	34'10"
Sleeping Accomodations	6	6	6	6	6