



*The Ultimate Statement ...*



*Newmar Corporation:  
A sound company backed by  
21 years of experience.*

BY



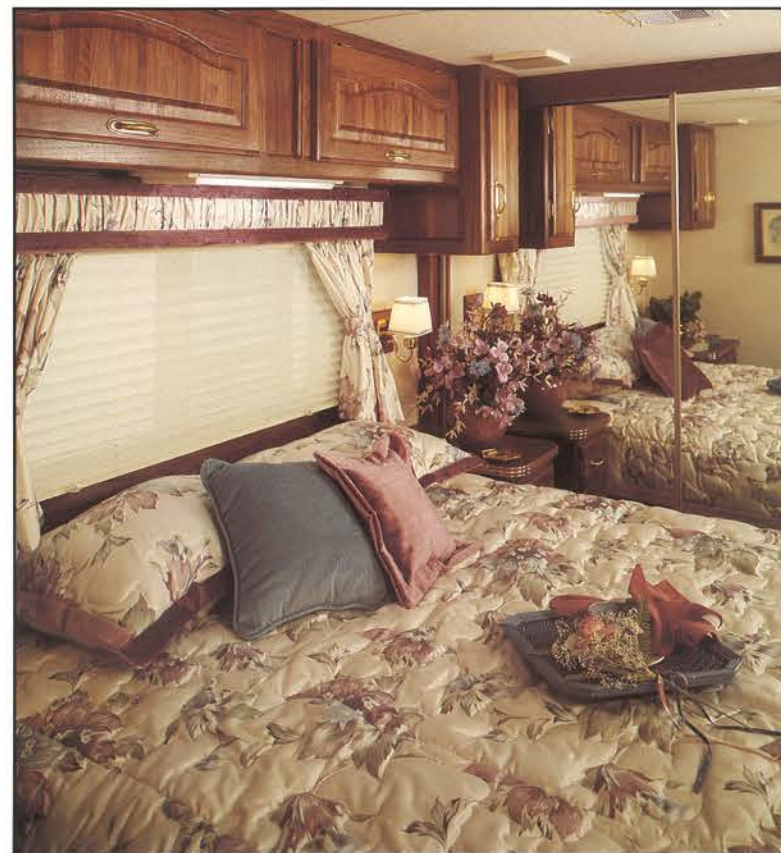
\*Aluminum Superstructure



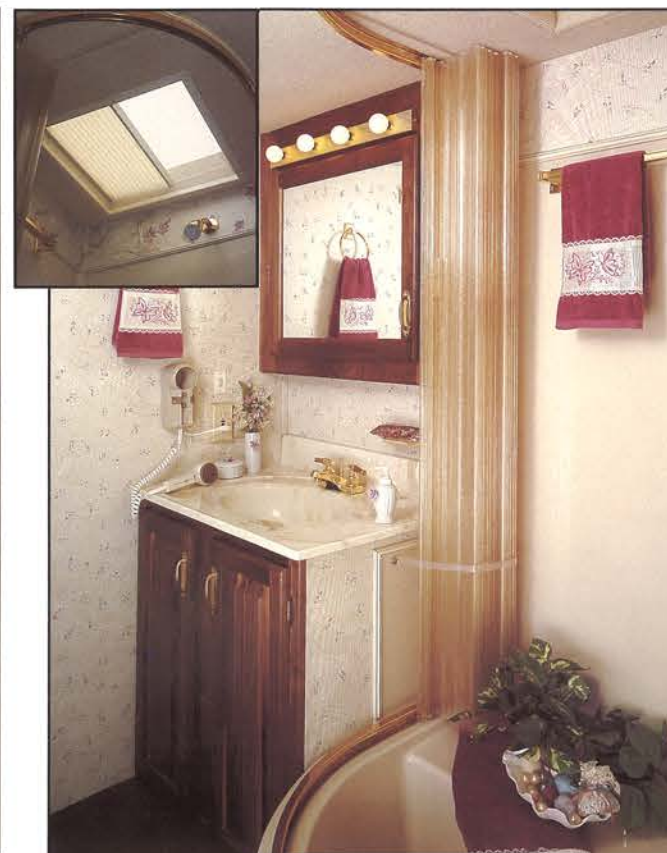


Fifth Wheel Galley

Skylight



Fifth Wheel Honeymoon Suite



Bath



Class A Cockpit

## "The Ultimate Statement"

Have you ever wanted to make a statement, a reflection of your character and taste for finer things, but just couldn't seem to find the appropriate words? Why not let London Aire make that statement for you this year ...**The Ultimate Statement!**

London Aire has been impressing RVers for years with only the finest quality of genuine hardwoods, etched glass, discreetly designed plush interiors and exteriors and the craftsmanship you've come to expect from Newmar Corporation's finest line of recreational vehicles.

**The Ultimate Statement** therefore is expected to include all the luxuries and intimate detailing possible in a single coach. With one look at London Aire's list of standard features, you'll be pleasantly convinced that we have made these expectations into a reality.

**Short-cuts are prohibited in the manufacturing of any product in this line up.** Long hours are spent in the selection of colors, fabrics, hardwoods and hardware. Any components chosen for a London Aire product must meet with rigid inspection for quality, eye-appeal and durability before they are allowed to become a part of **The Ultimate Statement.**

These strict procedures along with the best components and materials are all combined with an all-aluminum superstructure to insure the London Aire owner that he will enjoy years of beauty and dependable performance in one of the most unique RVs on the road today.

Making **The Ultimate Statement** has one slight drawback however, and we feel obligated to warn you of this minor problem: Wherever you take your RV, people everywhere are going to want a first hand glimpse of something they've dreamed of . . . **London Aire!**



Quality is NO. 1 at Newmar Corporation, and our "Personal Touch" inspection of all products will insure you of that high quality before any RV ever leaves our plant.

### \*5 Year Limited Warranty on Superstructure

Newmar Corporation warrants the Superstructure which includes the following: The 12" I-beam Frame; the Aluminum Framing in the Sidewalls and Roof. If any part of the Superstructure fails to perform properly within 5 years from the date of purchase because of faulty workmanship or materials supplied by Newmar, it will be repaired without charge for either parts or labor by Newmar providing the proper claim procedures are followed. All other items excluding the Superstructure are covered under the standard Newmar 1 Year Limited Warranty. See Owner's Manual for details.



## TRAVEL TRAILER

### Specifications & Floor Plans

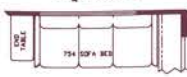
Option A



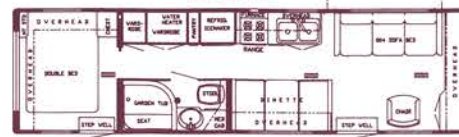
Option E



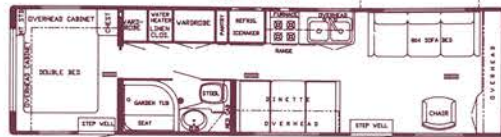
Option F



32 CBD



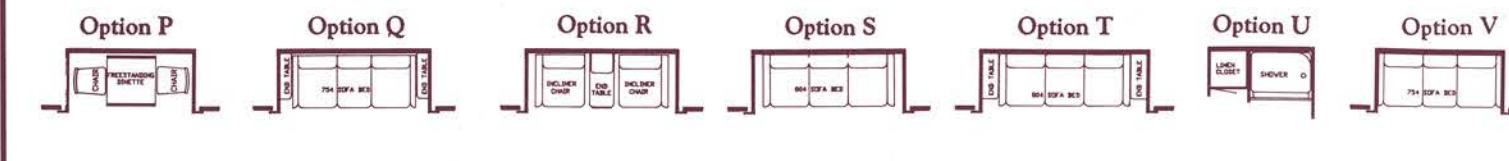
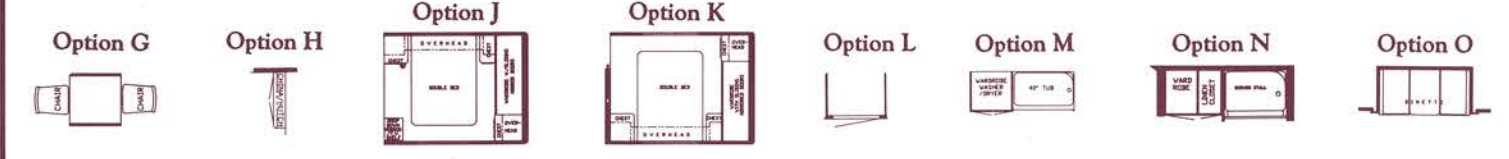
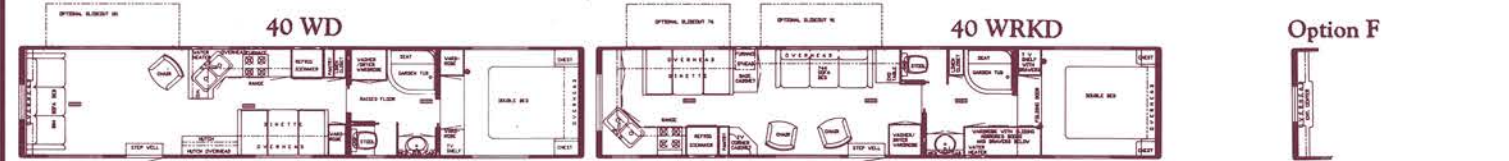
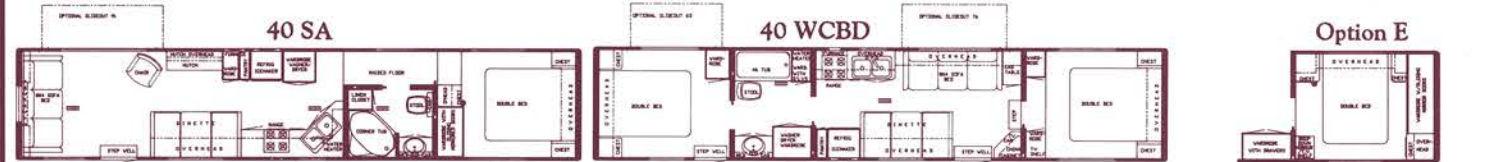
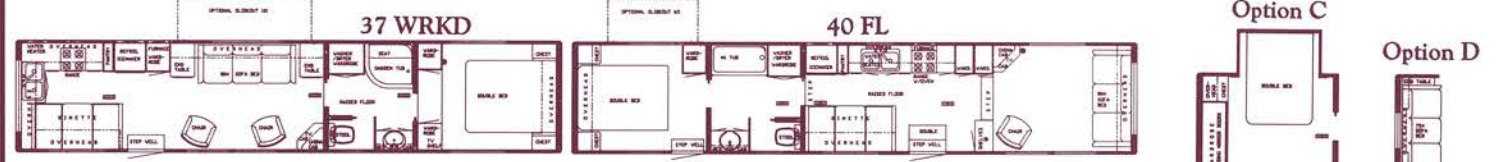
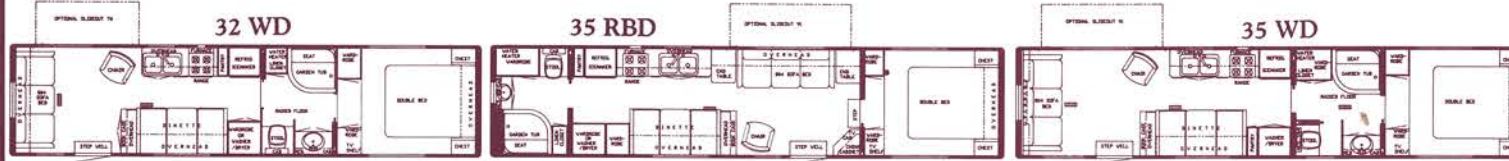
34 CBD



Dimensions	Gross Dry Weight	GVWR	Dry Hitch Weight	Dry Axle Weight	Height with A/C	Length/Width	Options
32 CBD	8,200	10,400	1,000	7,200	125"	32' 8" / 96"	A, E, F
34 CBD	8,900	11,000	1,000	7,900	125"	34' 2" / 96"	A, E, F

Approximate Weights. GVWR = Gross Vehicle Weight Rating. Charts are Based on Standard Units.

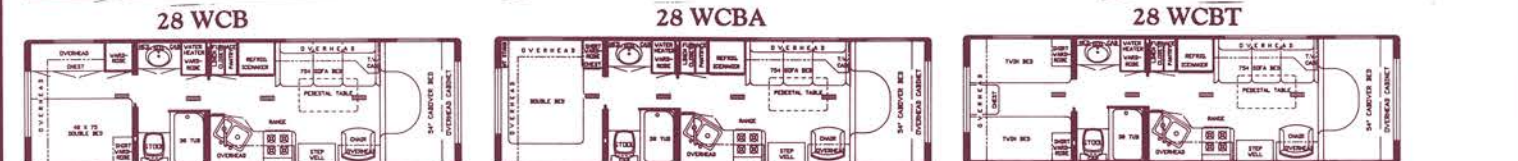
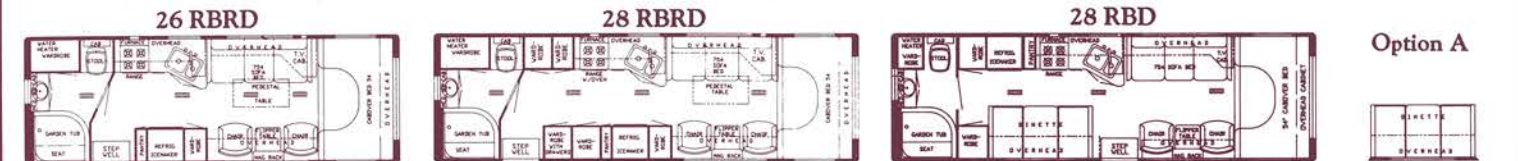
## FIFTH WHEEL • Specifications & Floor Plans



Dimensions	Gross Dry Weight	GVWR	Dry Hitch Weight	Dry Axle Weight	Height with A/C	Length/Width	Options
32 WD	9,700	12,000	1,700	8,000	132"	33' 9" / 96"	B, D, F, G, J, L, U, V
35 RBD	9,950	12,000	1,650	8,300	132"	36' 3" / 96"	B, G, H, J, Q, R, S
35 WD	9,950	12,000	1,650	8,300	132"	36' 3" / 96"	B, D, F, G, J, L, M, Q, R, S
37 FL	10,500	13,000	1,800	8,700	138"	39' 1" / 96"	C, D, G
37 WD	10,470	13,000	1,770	8,700	132"	39' 1" / 96"	B, D, F, G, J, Q, R, S
37 WRKD	10,470	13,000	1,770	8,700	132"	39' 1" / 96"	B, G, H, J, T
40 FL	10,750	15,000	1,750	9,000	138"	40' 4" / 96"	C, D, G
40 SA	10,750	15,000	1,750	9,000	132"	40' 4" / 96"	B, D, F, G, K, Q, R, S
40 WCB	10,750	15,000	1,750	9,000	132"	40' 4" / 96"	B, C, G, H, J, V
40 WD	10,750	15,000	1,750	9,000	132"	40' 4" / 96"	B, D, F, G, J, T
40 WRKD	10,750	15,000	1,750	9,000	132"	40' 4" / 96"	B, E, G, O, P, Q, R, S

Approximate Weights. GVWR = Gross Vehicle Weight Rating. Charts are Based on Standard Units.

## MINI HOME • Specifications & Floor Plans

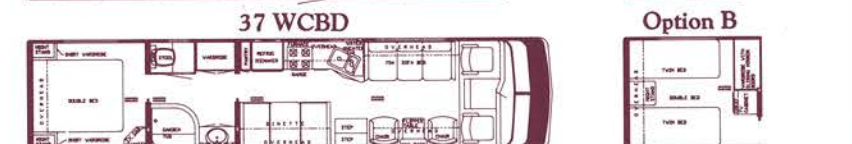
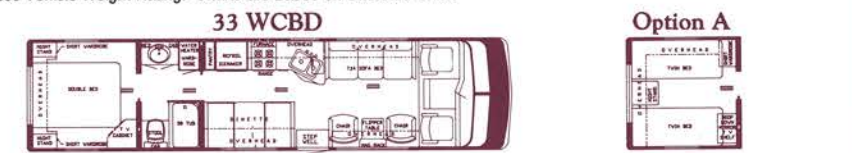


Dimensions	Gross Dry Weight	GVWR	Front Axle	Rear Axle(s)	Height with A/C	Length/Width	Options
26 RBRD	10,000	11,000	3,000	7,000	130"	25' 6" / 96"	A
28 RBRD	11,700	15,000	3,450	8,300	130"	28' 6" / 96"	A
28 RBD	11,700	15,000	3,450	8,300	130"	28' 6" / 96"	A
28 WCB	11,900	15,000	3,500	8,400	130"	29' 2" / 96"	A
28 WCB	11,900	15,000	3,500	8,400	130"	29' 2" / 96"	A
28 WCBT	11,900	15,000	3,500	8,400	130"	29' 2" / 96"	A

Approximate Weights. GVWR = Gross Vehicle Weight Rating. Charts are Based on Standard Units.

## CLASS A MOTORHOME

### Specifications & Floor Plans



Dimensions	Gross Dry Weight	GVWR	Front Axle	Rear Axle(s)	Height with A/C	Length/Width	Options
33 WCB	15,200	18,000	4,400	10,900	132"	34' 7" / 96"	B
37 SA*	16,200	18,000	4,500	11,700	132"	37' 5" / 96"	A
37 WCB	16,200	18,000	4,500	11,620	132"	37' 5" / 96"	B

\* S/S ONLY

Approximate Weights. GVWR = Gross Vehicle Weight Rating. Charts are Based on Standard Units.

## LONDON AIRE Towable and Motorized Standards and Options

TT	FW	MI	CA	Retail Cost	AIR CONDITIONING, HEATING & LP GAS	TT	FW	MI	CA	Retail Cost	APPLIANCES & ACCESSORIES - Continued
S	S	S	S		Air Cond. Central Coleman 13.5 BTU w/Wall Thermostat (1)	S	S	S	S		Clothes Line in Tub/Shower (Retractable)
O	O	O	O	\$835	Air Cond. Central Coleman 13.5 BTU w/Wiring & Wall Thermostat (Extra)	S	S	S	NA		Decorative Tile Recessed in Sink Cover
NA	NA	S	NA		Furnace 31M Electronic Ignition (Excalibur)	S	S	S	S		Faucet for Lavatory Deluxe Dbl. Handle w/Pop up Plug (Gold)
NA	O	NA	NA	\$402	Furnace 20M Electronic Ignition in Bedroom (Excalibur)	S	S	S	S		Faucet for Shower Single Handle w/Spigot (Gold)
S	S	NA	S		Furnace 35M Electronic Ignition (Excalibur)	S	S	S	S		Faucet for Sink Single Handle Deluxe Hi Rise (Chrome)
NA	O	NA	NA	\$100	Furnace 41M Electronic Ignition ILO Std.	S	S	S	S		Food Center Nutone (Blender)
S	S	S	S		Heat Under Floor Ducted	O	O	NA	NA	\$255	Hair Dryer
NA	NA	NA	S		Heater Auxiliary in Bedroom	S	S	S	S		Ironing Board (where applic.)
O	NA	NA	NA	\$226	LP Gas Bottles 2-30# Alum. w/Gauges ILO 30# Steel	S	S	S	S		Magazine Rack in Bath Area (where applic.)
S	NA	NA	NA		LP Gas Bottles 2-30# Steel w/Auto. Reg.	S	S	S	S		Microwave Oven Convection 30" (Sharp) w/Light/Fan & 4-Burner Hot Plate
NA	O	NA	NA	\$267	LP Gas Bottles 2-40# Alum w/Gauges ILO 40# Steel	S	S	S	S		Range Cover Bi-Fold Deluxe
NA	S	NA	NA		LP Gas Bottles 2-40# Steel w/Auto. Reg.	S	S	S	S		Refr. Dometic 4801 AES w/Ice Maker w/Raised Panel Insert
NA	NA	S	S		LP Gas Tank 15 Gal.						
NA	NA	O	O	\$128	LP Gas 32 Gal. ILO 15 Gal.	O	O	O	O	\$432	Safe (where applic.)
S	S	NA	NA		LP See Level Gauges (set of 2)	O	O	O	O	\$260	Shower Stall ILO Std.(where applic.)
S	S	S	S			S	S	S	S		Sink Covers Laminated - 2
						S	S	NA	NA		Sink Deep Dbl. Porcelain
						NA	NA	S	S		Sink Deep Dbl. Stainless
						S	S	S	S		Sink Large Lavatory Cultured Marble





Fifth Wheel Living Area with Slide-out



LA-9-59 Sterling Silver



LA-9-60 Porcelain Blue



TT	FW	MI	CA	Retail Cost	
S	S	S	S		<b>APPLIANCES &amp; ACCESSORIES - Continued</b>
S	S	S	S		Stool Aqua Magic Galaxie w/Padded Lid
					Tub Fiberglass Garden/Style w/Enclosure Door (where applic.)
S	S	S	S		Vacuum System Portable
O	O	NA	NA	\$1,033	Washer & Dryer Sears 2 piece (see floor plans)
O	O	NA	NA	\$200	Washer/Dryer Prep Sears 2 piece-Plumbing, Recept & Shelf (certain models)
S	S	S	S		Waste Basket
S	S	S	S		Water Heater Bypass Kit
S	S	NA	NA		Water Heater Gas/Elec 10 Gal. w/Reignitor
O	O	S	S	\$162	Water Heater Gas/Elec. 6 Gal. Fast Recovery w/Elect. Ign. 13.52 Gal. Per/Hr.
S	S	S	S		Water Purifying System (Drink Dispenser & Icemaker)
					<b>CABINETS &amp; FURNITURE</b>
O	O	NA	NA	\$54	Bar (Table Height) ILO Dinette
S	S	S	S		Bed Double (see floor plan)
O	O	NA	O	\$105	Bed Queen (60" x 75") w/Spread & Sham (where applic.)
O	O	O	O	\$272	Bed Twin (32" x 75") ILO Dbl. w/Spreads & Shams
S	NA	NA	NA		Bookcase Cab. w/TV Shelf (where applic.)
O	O	NA	NA	\$275	Bunk Stationary 32" w/4" Foam Matt & Window (where applic.)
NA	S	NA	NA		Cabinet China w/Decorative Glass Door(s) (see floor plan)
NA	NA	NA	S		Cabinet for TV & Make-up Mirror in Bedroom
S	S	S	S		Cabinet Medicine w/Mirror Doors
NA	O	NA	NA	\$336	Cabinet Mini Hutch w/Lights (where applic. w/slide out)
S	S	S	S		Cabinet Night Stand(s) (see floor plan)
O	O	NA	O	\$154	Cabinet Overhead Extra in B/R (ea.) (where applic.)
O	O	O	O	(\$400)	Cabinetry Oak w/Raised Panel Doors ILO Walnut
S	S	S	S		Cabinetry Walnut Hardwood w/Raised Panel Doors
S	S	NA	O	\$464	Chair Recliner w/Foot Rest
NA	O	NA	NA	\$323	Chairs Free Stding. Incliner w/End Table & Light in 91" Sl. Out ILO Sofa
NA	NA	S	S		Chair(s) Barrel (where applic.)
S	S	S	NA		Counter Top Extension (where applic.)
NA	O	NA	NA	\$259	Deluxe Honeymoon Suite Bedroom W/robe & Chest (must add opt. for Raised Floor Bath)
O	O	NA	NA	\$76	Dinette Free Standing w/2 Chairs ILO Built-In
NA	NA	O	NA		Dinette ILO Sofa
S	S	S	S		Dinette w/Flex-a-lator & Fabric Covered Ends (see floor plan)
S	S	S	S		Doors or Drawers under Dinette for Easy Access
S	S	S	S		Drawer Wood w/Silverware Tray
S	S	S	S		Drawers Wood w/Metal Guides & Side Rollers
NA	NA	O	NA	(\$120)	Entertainment Center ILO Curtains, Matt & Windows
NA	O	NA	NA	\$344	Entertainment Center w/30" Rear Window (where applic.)
S	S	S	S		Headboards Decorative (where applic.)
S	S	S	S		Pantry Slide-out (see floor plan)
NA	NA	S	NA		Seat Driver/Passenger Swivel & Recliner
NA	NA	NA	S		Seat Driver/Passenger 6-way Power Swivel & Recliner
NA	NA	S	S		Leather/Vinyl Comb.
NA	NA	S	S		Snack Tray on Engine Cover w/Cassette Holder
S	S	S	S		Sofa Bed Free Standing (where applic.)
O	O	NA	NA	\$113	Sofa 75" w/Tables ILO 84" Sofa
S	S	S	S		Spice Rack (Hand Crafted)
S	S	S	S		Spring Lifts for Convenient Storage Under Fixed Beds
S	S	NA	NA		Table Dropleaf high-low for (coffee or din.)
NA	NA	S	NA		Table Free Standing Pedestal (see floor plan)
NA	NA	S	S		Table/Chest w/CupHolder Between Chairs (where applic.)
S	S	S	S		Wardrobe Shirt Length (ea.) (where applic.)
NA	O	NA	NA	\$333	Wardrobe /Delete & Add Front Entrance Door 26" (where applic.)
					<b>CHASSIS FEATURES</b>
NA	NA	S	S		Brakes Power
NA	NA	NA	S		Chassis-Chevy w/Mor Ryde Tag Axle (454 CID Engine) w/78 Gal. Tank
NA	NA	S	NA		Chassis-Ford (460 CID) w/Radial Tire w/42 Gal. Tank
NA	NA	NA	O		Chassis-Ford w/Mor Ryde Tag Axle (460 CID Engine) w/ Radial Tires w/75 Gal. Tank
NA	NA	S	S		Cruise Control
NA	NA	S	S		Heater/Air Conditioner High Output Automotive
NA	NA	S	NA		Power Window & Door Locks Driver & Passenger
NA	NA	S	S		Power Steering
NA	NA	NA	S		Steering Wheel Custom Padded Leather (Chevy)
NA	NA	S	S		Steering Wheel Tilt
NA	NA	S	S		Transmission Automatic
NA	NA	S	S		Transmission Cooler
NA	NA	S	S		Windshield Tinted
					<b>ELECTRICAL &amp; LIGHTING EQUIPMENT</b>
S	S	S	NA		Battery 115 AMP Sears Die Hard (1)
NA	NA	NA	S		Battery 115 AMP Sears Die Hard (2)
O	O	O	NA	\$78	Battery 115 AMP Sears Die Hard (ea.)
O	O	O	O	\$27	Battery 115 AMP Sears Die Hard Deep Cycle ILO Std.
O	O	O	O	\$120	Battery 115 AMP Sears Die Hard Deep Cycle (2) ILO Std.

TT	FW	MI	CA	Retail Cost	
NA	NA	S	S		<b>ELECTRICAL &amp; LIGHTING EQUIPMENT - Cont.</b>
S	S	NA	NA		Battery Automotive
NA	NA	S	S		Battery Box on Slides
NA	NA	S	S		Battery Disconnect
NA	NA	S	S		Battery Isolator
NA	NA	S	S		CB Radio w/Antenna
S	S	S	S		Convertor 50 AMP w/Charger
NA	NA	NA	S		Cord Electrical w/Auto. Rewind (30 AMP only)
S	S	S	S		Electrical Service 30 AMP
O	O	NA	O	\$200	Electrical Service 50 AMP ILO 30
NA	O	NA	NA	\$106	Fan Ceiling (where applic.)
NA	NA	NA	S		Fans Defroster Driver & Passenger (built in)
NA	O	NA	NA	\$2,646	Gen. 4.0 kw Onan w/1 Remote Sw., Gas Tank & Auto Changeover
NA	NA	S	NA		Gen. 4.0 kw Onan w/1 Remote Sw. & Auto Changeover
NA	O	NA	NA	\$3,931	Gen. 6.5 kw Onan w/1 Remote Sw., Gas Tank, Auto Changeover & Battery
NA	NA	NA	S		Gen. 6.5 kw Onan w/2 Remote Sw. & Auto Changeover
NA	O	NA	NA	\$200	Gen. Gasoline Tank
NA	O	NA	NA	\$200	Gen. Prep (auto. changeover, battery/cable, Remote Start Wire & Door)
NA	NA	NA	S		Horn Trumpet (on roof)
NA	O	NA	NA	\$120	Intercom System
S	S	NA	S		Light at Gate Valve Area
S	S	S	S		Light Exterior Patio w/Inside Switch
S	S	S	S		Light Fixture Deluxe Over Dinette & Fixed Bed
S	S	NA	NA		Light for Hookup Convenience
NA	NA	NA	S		Light Remote Controlled (roof spot/flood)
NA	NA	NA	S		Light under Hood
S	S	S	S		Lighting 12 Volt Fluorescent (w/Wall Switch)
S	S	S	S		Lights 10" Tube Behind Glass Doors
NA	NA	NA	S		Lights Docking (Recessed in Side Wrap)
O	O	O	O	\$36	Lights Exterior Security (ea.)
NA	NA	S	S		Lights Fog
S	S	S	S		Lights in Wardrobe w/Automatic Switches
NA	NA	S	S		Lights Interior Courtesy
S	S	S	S		Lights Running & Backup Recessed
S	S	S	S		Monitor Panel Super Deluxe w/Clock & Weather Center
S	S	NA	NA		Plug & Bracket for Tow Vehicle
NA	NA	NA	S		Radio/Ant., AM/FM Stereo Cass., Clock & 2 Speakers (bedroom)
S	S	S	S		Radio/Ant., AM/FM Stereo Cass., Clock & 4 Spkr. (CB Models 6 Spkr.)
S	S	S	S		Recept. 110V GFI (interior & exterior)
O	O	O	O	\$36	Recept. 110V GFI Protected Exterior (extra)
O	O	O	O	\$15	Recept. 110V Interior (extra)
O	O	O	O	\$15	Switch 110V (extra)
NA	NA	NA	S		Switch for Emergency Chassis Engine Start
S	S	S	NA		Switch Shut-off for Bedroom Speakers
O	O	O	O	\$28	Telephone Jack Extra Interior (Choose Location)
S	S	S	S		Telephone Jack & Cable TV Hook up (Choose Location)
NA	NA	NA	S		Trip Meter for Convenience Mileage Check
S	S	S	S		TV Antenna w/Power Booster & 2 Jacks
NA	NA	S	S		TV Color AC 13" w/Remote Control (Living Area Built-In)
S	S	NA	NA		TV Color AC 13" w/Remote Control
O	O	NA	S	\$466	TV Color AC/DC 10" w/Remote Control in Bedroom (Built-In)
S	S	S	S		TV Jack Exterior on Door Side
O	O	O	O	\$50	TV Jack w/Splitter (extra)
NA	NA	NA	S		TV Monitor Closed Circuit Rear View & Back-Up Lights
S	S	NA	S		TV Shelf/Cabinet (bedroom)
S	S	S	S		VCR w/Newmar Tape
O	O	O	O	\$3,185	TV Satellite Dish 6' A & E (where applic.)
					<b>EXTERIOR ACCESSORIES</b>
NA	NA	S	S		Bumper Front Auto Style w/Chrome Grill
S	S	S	S		Bumper Rear Auto Style w/Storage Comp.
S	S	S	S		Exterior Front & Rear Gelcoated Fiberglass End Caps
S	S	S	S		Exterior Sides Gelcoated Fiberglass
O	O	S	S	\$173	Ladder & Roof Rack
S	S	NA	NA		LP Gas Bottles in Concealed Compartment
NA	NA	NA	S		Mirrors Exterior w/Convex, Remote Control, Defrost, & Turn Sig.
NA	O	NA	NA	\$233	Raised Floor Bath w/Large Carpeted Storage Area & Lights
S	S	S	S		Roof Gelcoated Fiberglass
NA	NA	S	NA		Running Boards Fiberglass
O	O	NA	NA	\$2,773	Slide-Out 65" & 76" w/Lights (Choose Cabinet & Furniture Selection)(where applic.)
NA	O	NA	NA	\$2,919	Slide-Out 91" & 101" w/Lights (Choose Cabinet & Furniture Selection) (where applic.)
NA	NA	NA	S		Spoiler Deluxe Incomp. w/Front Bumper
O	O	S	S	\$376	Step Double 12 Volt Auto. w/Non-Skid Surface
O	O	NA	NA	\$68	Step Triple Manual ILO Double (where applic.)
NA	S	NA	NA		Step Double Manual w/Non-Skid Surface
NA	NA	O	S	\$89	Step Fold Down in Front Bumper
S	NA	NA	NA		Step Single Manual w/Non-Skid Surface
S	S	NA	NA		Stone Guard Pull Down Vinyl (Exclusive)
S	S	S	S		Storage Exterior Compartment(s)

TT	FW	MI	CA	Retail Cost	
S	S	S	S		<b>EXTERIOR ACCESSORIES - Continued</b>
NA	NA	NA	S		Storage Exterior Slide-Out Drawer 29"
S	S	NA	S		Storage Exterior Slide-Out Drawer 35" (24" in 33')
O	O	O	O	\$258	Storage Exterior Slide-Out Drawer 48"
O	O	O	O	\$404	Storage Roof Pod 10 cu. ft.
NA	NA	NA	O	\$2,328	Storage Roof Pod 21 cu. ft.
NA	NA	NA	S		Super Storage 33' - 37'
					SS Carpeting in Storage Compartments
					<b>INTERIOR FEATURES</b>
S	S	S	S		Bedsprad(s) Quilted w/Matching Shams & Accent Pillow Dbl.
S	S	S	S		Cabinet Doors w/Decorative Glass
S	S	S	S		Ceiling Woven Soft Touch
O	O	NA	S	\$890	Countertop Kitchen & Dinette Table Solid Surfacing Material
S	S	S	S		Door Frame Cushioned
S	S	S	S		Floor Covering, Carpet w/9/16" Deluxe Pad Throughout
O	O	O	O	\$392	Floor Covering, Hard Wood Parquet in Kitchen Area ILO Carpet
O	O	NA	NA	\$40	Floor Covering, Vinyl in Kitchen Area ILO Carpet
S	S	S	S		Mirror(s) Bevelled & Etched w/Decorative Wood Frame
S	S	S	S		Paneling Decorative Vinyl in Bath Area
S	S	S	S		Paneling Decorative Vinyl in Living Area
S	S	S	S		Paneling Textured Light Color in Bedroom
NA	NA	S	S		Privacy Drapes (fabric lined) for Windshield
NA	NA	NA	NA		Stand Up Area in Front Bedroom
S	S	S	S		Window Garnish Hard Wood (Residential Style)
S	S	S	S		Window Treatmt Mini Blinds (Kitchen & Bath)
S	S	S	S		Window Treatmt Day/Night Soft Shades, CncBd/Lined Drapes/Tvs. Rod/Tie Bks.
					<b>PLUMBING SYSTEMS</b>
O	O	NA	NA	\$188	Hear Pads for Holding Tanks 110V
S	S	S	NA		Hook-Up for City Water
S	S	O	O	\$259	Insulated Holding Tanks
S	S	S	S		Sewage Holding Tank Rinse
S	S	S	S		Sewage Hose Holder
NA	NA	S	NA		Tank Gray Water 25 Gal. (Approx.)
NA	NA	NA	S		Tank Gray Water 30 Gal. (Approx.)
S	S	NA	NA		Tank Gray Water 60 Gal. (Approx.)
NA	NA	S	NA		Tank Sewage Holding 25 Gal. (Approx.)
NA	NA	NA	S		Tank Sewage Holding 40 Gal. (Approx.)
S	S	NA	NA		Tank Sewage Holding 60 Gal. (Approx.)
S	S	S	NA		Water Capacity 42 Gal. (Approx.)
NA	NA	NA	S		Water Capacity 54 Gal. (Approx.)
NA	NA	NA	S		Water Hose w/Auto. Rewind w/City Water Hook-Up)
S	S	S	S		Water System Demand w/12V Pump & 5/8" Polybutylene Lines
					<b>RUNNING GEAR &amp; CONSTRUCTION</b>
S	NA	NA	NA		Axle 4" Drop w/12" Brakes
NA	S	NA	NA		Axle Straight w/12" Brakes
S	S	S	S		Floor 1" Laminated Plywood
S	S	NA	NA		Frame Size 12" I-Beam
NA	NA	S	S		Hitch for Towing Car w/Wire Connector
NA	NA	S	NA		Hitch Plate & Bracket Center Mount 12500 lb. ( Except 37' & up)
NA	S	NA	NA		Hitch Plate & Bracket Center Mount 16000 lb. (37' & up)
S	S	S	S		Insulation 1/4" Fome-Cor Exterior Roof
S	S	NA	NA		Insulation R19 Fiberglass in Floor
S	S	S	S		Insulation R19 Fiberglass in Roof
S	S	S	S		Insulation Laminated 5/8" Foam in Sidewalls & Ceiling
S	S	S	S		Insulation R7 Fiberglass in Sidewalls
NA	NA	S	S		Jack Hydraulic - 6 Ton
NA	NA	NA	S		Jacks Auto Hydraulic Leveling A & E
NA	NA	O	NA	\$1,988	Jacks Elec. Leveling A & E
NA	O	NA	NA	\$126	Jacks Stabilizer Extra (set of 2)
NA	S	NA	NA		Jacks Stabilizer (set of 2)
S	NA	NA	NA		Jacks Stabilizer (set of 4)
O	O	NA	NA	\$577	Jacks Stabilizers 12V Power Twins A & E (set of 2) ILO Std. (without remote)
S	S	NA	NA		Jack(s) for Hitch 12V Power
NA	NA	S	S		Mud Flaps (front & rear)
S	S	S	S		Shock Absorbers
S	S	S	S		Skid Bars for Rear Bottom Protection
S	S	S	S		Spare Tire in Bumper Slide-Out Tray
NA	S	NA	NA		Stabilizer for Fifth Wheel Pin (Excl. Built-In)
S	S	S	S		Structure Aluminum Sidewalls & Roof
NA	NA	S	S		Suspension w/Tag Axle (Except 26')
NA	S	NA	NA		Tires Radial 16" E Range w/6000 lb. Axles (37' only)
S	S	NA	NA		Tires Radial 16" D Range
NA	NA	S	NA		Tires Radial - Ford
S	S	NA	NA		Underbelly Enclosed w/Lam. 5/8" Foam & Gate Valve Insp. Plate
NA	NA	S	S		Undercoating
NA	NA	S	NA		Wheel Covers Decorative Deluxe
S	S	NA	NA		Wheels 16" Polished Aluminum

TT	FW	MI	CA	Retail Cost	
NA	NA	NA	S		<b>RUNNING GEAR &amp; CONSTRUCTION - Continued</b>
					Wheels Polished Aluminum
					<b>SAFETY FEATURES</b>
S	S	NA	NA		Break Away Switch
O	O	O	O	\$698	Customer Pick Up
S	S	S	S		Fire Extinguisher 10 BC
S	S	S	S		LP Leak Detector
S		NA	NA		Safety Chains
NA	NA	S	S		Seat Belts
NA	NA	S	S		Seat Belts w/Shoulder Straps (Driver & Pass. Seats)
O	O	O	O	\$1,589	Security System A & E
S	S	S	S		Smoke Detector
O	O	O	O		State Seals
					<b>WINDOWS, DOORS, AWNINGS &amp; VENTS</b>
S	S	NA	NA		Awning Front &/or Rear Recessed w/12V Switch Inside & Outside (where applic.)
O	O	O	O	\$196	Awning per Window Matching Side Awning (A & E 9000)
S	S	S	S		Awning Side A & E 9000 (up to 21')
O	O	O	O	\$89	Awning Tension Rafter for Side Awning
S	S	S	S		Door Bell
NA	NA	NA	S		Door Driver Side w/Dead Bolt Lock
NA	NA	S	S		Door Entrance Radius w/Screen 26" w/Flush Latch & Dead Bolt Lock
S	S	NA	NA		Door Entrance Radius w/Screen 30" w/Flush Latch & Dead Bolt Lock
NA	NA	NA	O	\$432	Door Passenger w/Dead Bolt Lock
S	NA	NA	NA		Door Secondary 26" Radius w/Dead Bolt Lock (where applic.)
NA	NA	NA	S		Door Stop Auto. Flush Recessed
S	S	S	NA		Door Wood Folding (where applic.)
S	S	S	S		Grab Handle Deluxe w/Light & Inside Switch
S	S	S	S		Screens All Windows
S	S	S	S		Skylight in Bathroom w/Soft Shade
S	S	S	S		Vent in Bath Area w/Wall Switch 12V
O	O	O	O	\$85	Vent in Ceiling 12V
O	O	O	O	\$299	Vent/Ceiling 12V Fantastic 3-Spd. w/Wall Thermostat w/Power Opener
O	O	NA	O	\$133	Window ILO Bevelled Mirrors in Bedroom (where applic.)
O	O	NA	NA	\$175	Window Picture 48" x 24" (ea.) (where applic.)
O	O	NA	NA	\$208	Window Picture 48" x 36" (ea.) (where applic.)
O	O	NA	NA	\$219	Window Picture 48" x 48" (ea.) (where applic.)
NA	NA	S	S		Window Radius Slider Tinted Safety Glass
S	S	NA	NA		Windows Radius Torque Tinted Safety Glass
O	O	NA	NA	\$552	Windows Safety Glass Storms (Except Slide Out)
O	O	NA	NA	\$71	Windows Safety Glass Storms (for Slide-Out only)





Optional Parquet Floor



Class A Galley



Class A Bedroom (37 WCBD)



Doorstop - (open)



Doorstop - (closed)



New Docking Lights  
*new/ryda*  
(Class A)



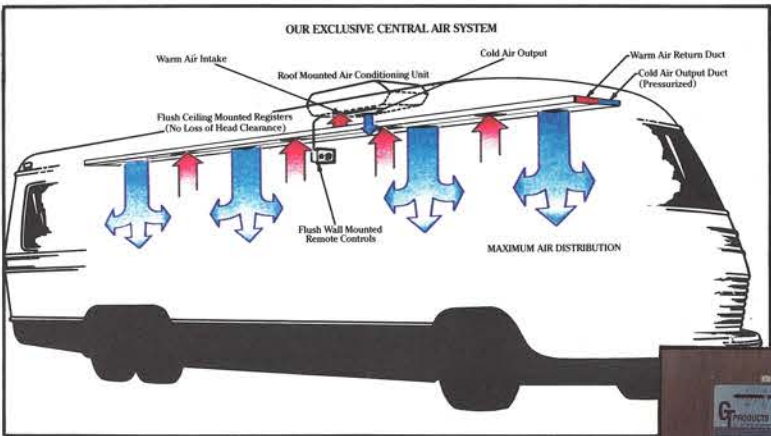
Standard Sliding Bumper Tray/Spare Tire Carrier



Super Storage Model



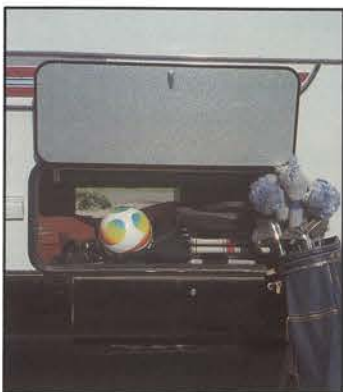
Awning



Remote Thermostatically Controlled "On/Off" (Standard)



Hydraulic Leveling Jacks



Large Optional Storage Compartment

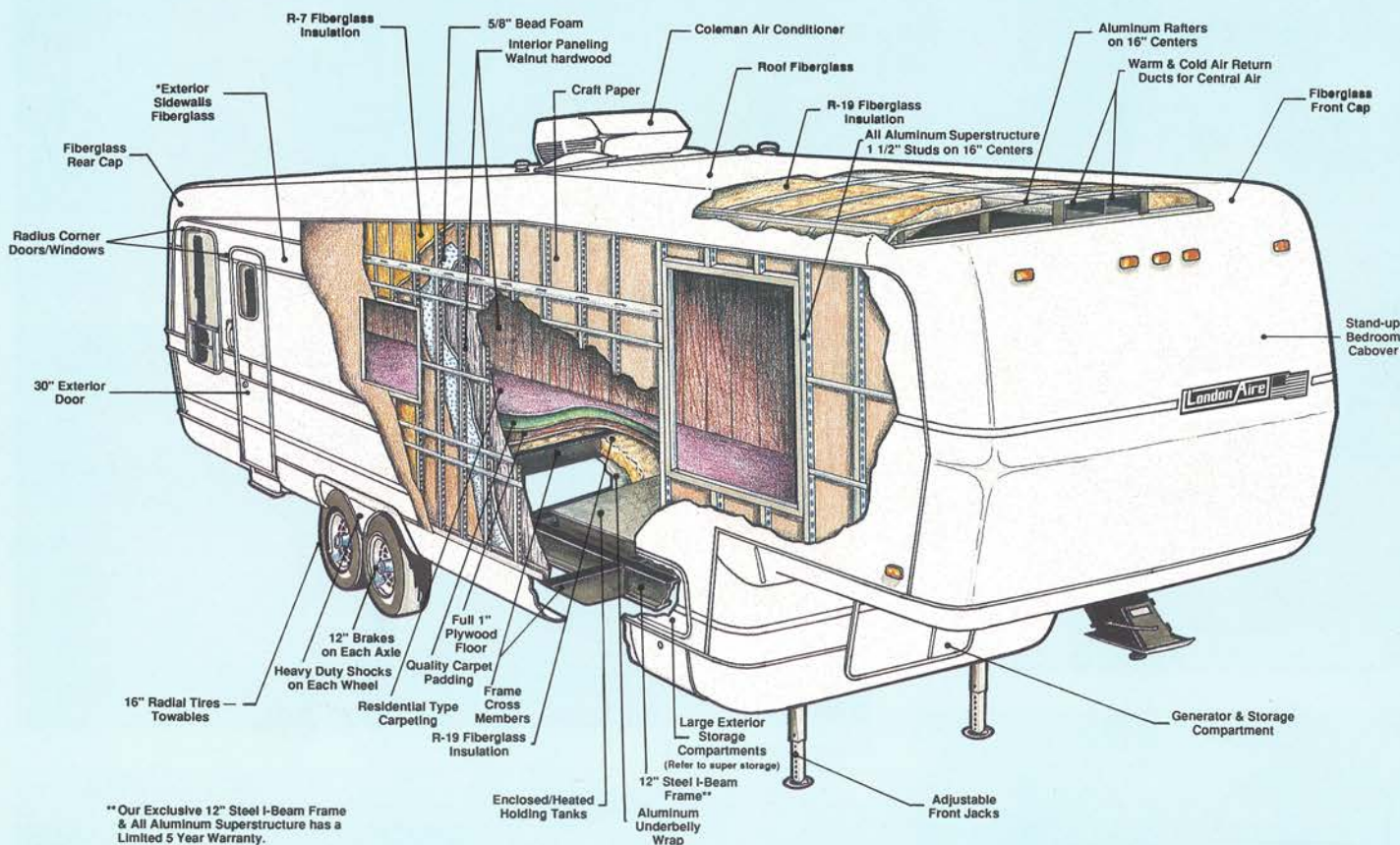


New Class A Front End

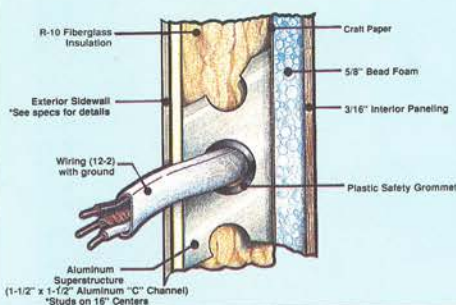


# The Ultimate All-Season RV

## "5 Year Limited Warranty on Super Structure"



Sidewall Profile



### Composite "R" Factors

Sidewalls	11.6
Ceiling	24.6
* Floor	26.1

\*Does not include motorized



**\*Aluminum Superstructure**



Valued suppliers of Newmar Corporation.



A&E Systems Inc.



hydro flame



RECREATIONAL VEHICLE PRODUCTS



SHARP.

Your nearest London Aire Dealer:



BY Newmar Corp.

Newmar Corporation, 355 North Delaware  
Nappanee, IN 46550-0030, (219) 773-7791

Scheduled plant tours Monday-Friday

Prices and spec's are subject to change without written notice at Newmar's discretion with no obligation.