

Kountry Star 1994 Towables





Brass Light



Silverware Tray



Spacious Galley

Entertainment Center



STANDARD FEATURES

Range Hood w/Light
 Wedgewood Range 4-Burner w/Oven 21" & Pilot Light
 2607.2 Dometic Double Door Refrigerator w/Oak
 Hardwood Raised Panel Doors
 Molded Silverware Tray
 Vinyl Floor in Kitchen & Bath
 Two Sink Covers
 Day/Night Soft Shade w/Mini Blinds at Kitchen & Bath
 Brass Bath Accessories
 (Towel Bar, Tissue Holder, Towel Ring & Robe Hook)
 Aqua Magic IV Stool
 12V Power Vent in Bath
 Queen Bed 60" x 75"
 Woven Soft Touch Ceiling
 47 oz. 100% Nylon Carpet w/Scotchgard Stainrelease
 In Floor Ducted Heat
 Smooth Aluminum Exterior Sides
 One Piece Aluminum Roof
 Winterize Convenience Package
 12" I Beam Frame w/Maximum Storage on Units
 w/Large Slideouts
 Wood Structure (Screwed and Glued)
 Underbelly Enclosed w/Insulation & Molded Rear
 Bumper (w/Slideout Models)
 30# LP Gas Bottles w/Automatic Regulator
 6 Gal. Gas Water Heater w/By Pass
 Insulated Holding Tanks
 Thermol Battery 125 AMP
 40 AMP Converter
 30 AMP Electrical Service
 Monitor Panel
 TV Cable Ready
 E-Z Lube Axles on Units w/16" Tires
 Stabilizer Jacks
 Radial Tires
 Shock Absorbers
 Double Steps
 Triple Steps on Units w/Large Slideouts
 42 Gallon Fresh Water Tank
 42 Gallon Grey Water Tank
 42 Gallon Sewage Holding Tank

POPULAR OPTION PACKAGES

H4 XL PREFERRED EQUIPMENT

Quilted Bedspread with Shams
 Bed Lifts
 Brass Complexion Light in Bathroom
 Convenience Light at Main Entrance Door Step
 Convenience Light in Each Wardrobe
 Decorative Wall Clock
 Drawers w/Metal Guides & Side Rollers
 Full Length Dressing Mirror
 High Density Carpet Pad
 Interior Assist Handle at Main Entrance Door
 Oak Trim Around Ceiling Lights
 Oak Hardwood Raised Panel Cabinet Doors
 Sofa Throw Pillows

R4 XL PREFERRED EQUIPMENT

13.5 BTU Central Air Conditioner
 Bifold Range Cover
 Fiberglass Tub w/Tub Enclosure
 2807.2 Dometic Refrigerator
 AM/FM Cassette w/Clock Stereo
 TV Antenna w/Power Booster & 1 Extra Jack
 Telephone Hookup w/1 Jack
 10 Gal. Gas/Elec. Water Heater w/Reigniter

S4 XL PREFERRED EQUIPMENT

12 Volt Front Power Jack
 Bright Lug Nuts
 Front & Rear Gel-Coated Fiberglass End Caps
 Polar Pak Insulation (R7 Sidewalls & Floor -
 R10 Roof)
 Roof Rack & Ladder

ADDITIONAL POPULAR

OPTIONS

Microwave
 Countertop Extension
 Drop Leaf Table w/2 Chairs ILO
 Built in Dinette
 Hidden Leaf Dinette Table ILO
 Free Standing Table
 Plank Floor in Kitchen
 Twin Beds
 Honeymoon Suite Bedroom (W/A)
 Slideout in Cabover w/Honeymoon
 Suite (W/A)
 China Stool w/Spray Attachment
 Washer/Dryer Prep
 Washer/Dryer
 Flexsteel Swivel Glider Recliner
 Swivel Rocker
 Swivel Rocker Recliner
 Ceiling Fan
 50 AMP Electrical Service
 Security Light Exterior
 Rubber Roof
 Sewage Holding Tank Rinse
 Exterior TV Jack Door Side
 Recessed Fluorescent Lighting

INTERIOR DECOR PACKAGES
 KS4-175 Blue Peacock
 KS4-176 Blue Bouquet
 KS4-177 Hunter Swirl
 KS4-178 Sage Green
 KS4-179 Cloisonné Sand

Newmar Kountry Klub

*Don't forget to check out the Klub...
 the Newmar Kountry Klub, that is. All
 you need to be eligible is to be the proud
 owner of any one of the fine Newmar
 recreational vehicles.*

Some features shown in our literature are optional. Colors and finishes are photographic representations and may appear differently when viewing actual materials. Please see your dealer for actual samples and specifications.

1994 KOUNTRY STAR TOWABLES

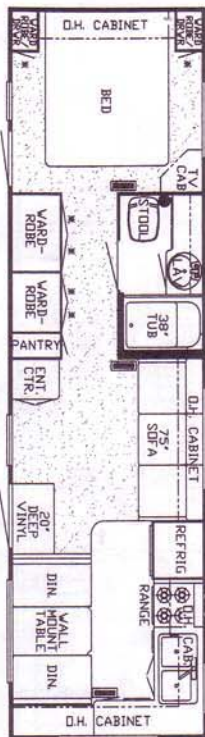
TRAVEL TRAILERS

UNIT	NO. AXLES	AXLE CAPACITY	TIRE	GAWR EACH	GVWR	APPROX. LENGTH	APPROX. HEIGHT	APPROX. WIDTH	APPROX. DRY WEIGHT	APPROX. HITCH WEIGHT
28 FK	2	5,200	225/75 R 15 D	5,000	10,400	29' - 1"	10' - 3"	96"	6,800	800
28 RBTB	2	5,200	225/75 R 15 D	5,000	10,400	29' - 1"	10' - 3"	96"	6,800	800
28 WCB	2	5,200	225/75 R 15 D	5,000	10,400	29' - 1"	10' - 3"	96"	6,800	800
30 FKL B	2	5,200	225/75 R 15 D	5,000	10,400	30' - 9"	10' - 4"	96"	7,100	850
32 AK	2	5,200	225/75 R 15 D	5,000	10,400	32' - 4"	10' - 4"	96"	7,400	850
32 CFKS	2	6,000	235/85 R 16 E	6,000	12,000	32' - 4"	10' - 11"	96"	9,500	950
32 FK	2	5,200	225/75 R 15 D	5,000	10,400	32' - 4"	10' - 4"	96"	7,400	900
35 FK	2	5,200	225/75 R 15 D	5,000	10,400	35' - 4"	10' - 4"	96"	8,600	950
35 CFLS	2	6,000	235/85 R 16 E	6,000	12,000	35' - 4"	10' - 11"	96"	9,900	1,050
36 DB	2	5,200	225/75 R 15 D	5,000	10,400	36' - 10"	10' - 4"	96"	8,800	950

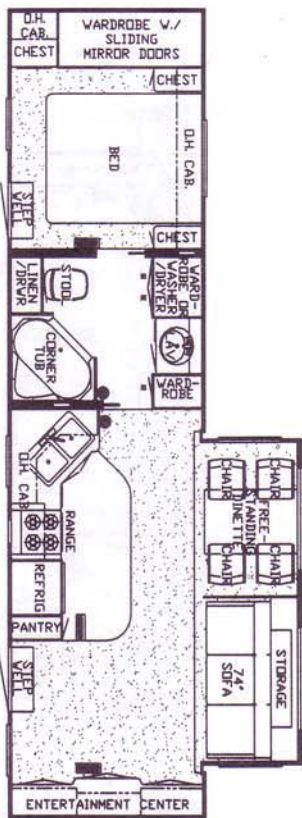
FIFTH-WHEELS

UNIT	NO. AXLES	AXLE CAPACITY	TIRE	GAWR EACH	GVWR	APPROX. LENGTH	APPROX. HEIGHT	APPROX. WIDTH	APPROX. DRY WEIGHT	APPROX. HITCH WEIGHT
28 WDSK	2	5,200	235/85 R 16 E	5,200	11,800	28' - 9"	11' - 11"	96"	9,500	1,700
28 WRKD	2	5,200	235/85 R 16 E	5,200	11,800	28' - 9"	11' - 11"	96"	9,500	1,700
29 RK	2	5,200	225/75 R 15 D	5,000	11,400	30' - 1"	11' - 7"	96"	7,500	1,300
29 RL	2	5,200	225/75 R 15 D	5,000	11,400	30' - 1"	11' - 7"	96"	7,500	1,300
31 AK	2	5,200	225/75 R 15 D	5,000	11,400	31' - 8"	11' - 7"	96"	7,700	1,300
31 RKWB	2	6,000	235/85 R 16 E	6,000	12,000	31' - 8"	11' - 11"	96"	9,700	1,700
31 RL	2	5,200	225/75 R 15 D	5,000	11,400	31' - 8"	11' - 11"	96"	7,700	1,300
32 FL	2	5,200	225/75 R 15 D	5,000	11,400	32' - 11"	11' - 11"	96"	7,900	1,300
32 RKSA	2	6,000	235/85 R 16 E	6,000	12,000	32' - 11"	11' - 11"	96"	9,900	1,700
33 AK	2	5,200	225/75 R 15 D	5,000	11,400	33' - 10"	11' - 7"	96"	8,200	1,400
33 DB	2	5,200	225/75 R 15 D	5,000	11,400	29' - 11"	11' - 7"	96"	8,200	1,400
33 RKWB	2	6,000	235/85 R 16 E	6,000	12,000	29' - 11"	11' - 11"	96"	10,500	1,800
33 RL	2	5,200	225/75 R 15 D	5,000	11,400	29' - 11"	11' - 7"	96"	8,200	1,400
36 DB	2	5,200	225/75 R 15 D	5,000	11,400	36' - 10"	11' - 7"	96"	8,700	1,500
36 FL	2	5,200	225/75 R 15 D	5,000	11,400	36' - 10"	11' - 7"	96"	8,700	1,500
36 RKWB	3	5,200	235/85 R 16 E	5,200	15,600	36' - 10"	11' - 11"	96"	11,700	1,900
36 RLDK	3	5,200	235/85 R 16 E	5,200	15,600	36' - 10"	11' - 11"	96"	11,700	1,900

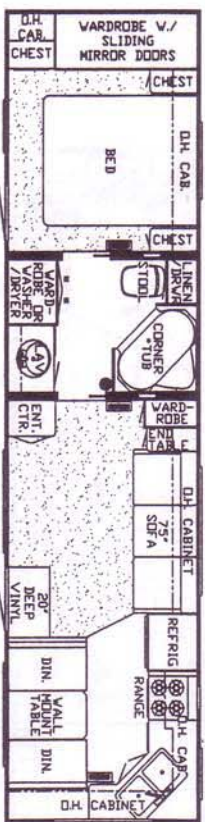
TRAVEL TRAILERS



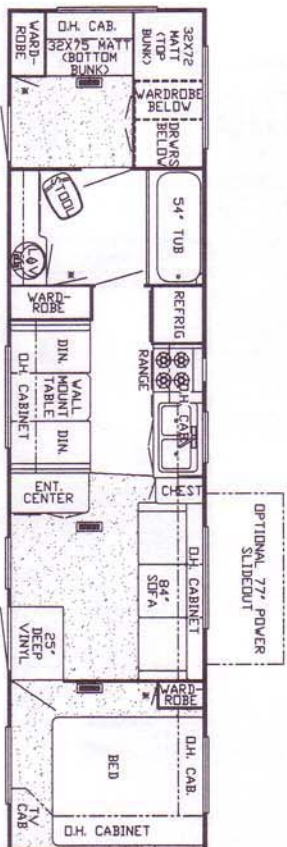
KS 32' FK
Rear Bedroom Twin Bed



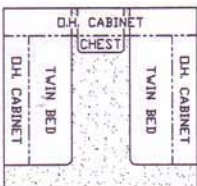
KS 35' CFLS
Rear Bedroom Twin Bed, Corner Shower,
Straight Tub, Straight Shower



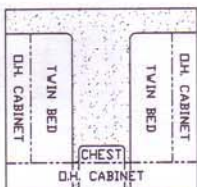
KS 35' FK
Rear Bedroom Twin Bed, Corner Shower,
Straight Tub, Straight Shower



KS 36' DB
Rear Bedroom Twin Bed



REAR BEDROOM TWIN BED



CABOVER BEDROOM TWIN BED



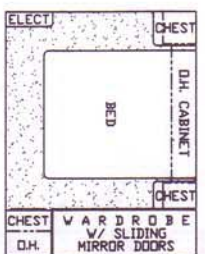
CORNER SHOWER



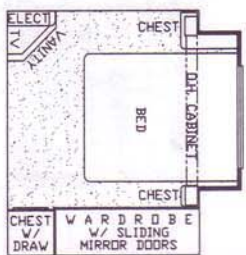
STRAIGHT TUB



STRAIGHT SHOWER

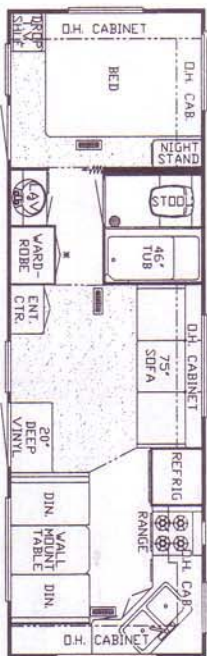


HONEYMOON SUITE CABOVER

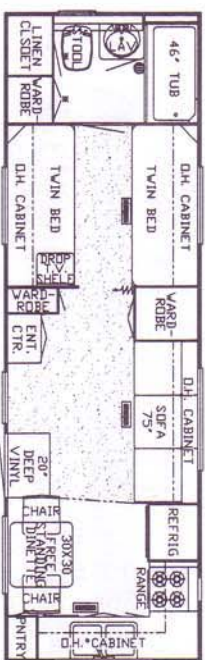


HONEYMOON SUITE w/SLIDEOUT

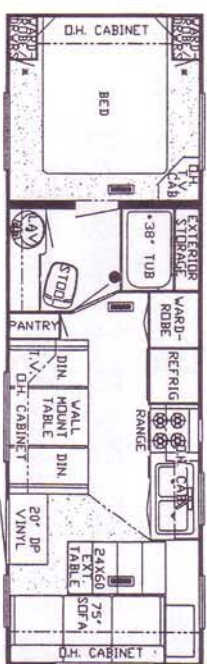
TRAVEL TRAILERS



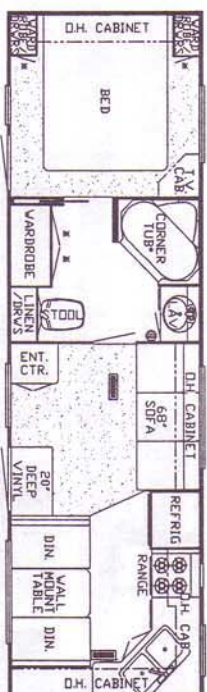
KS 28' FK
Rear Bedroom Twin Bed



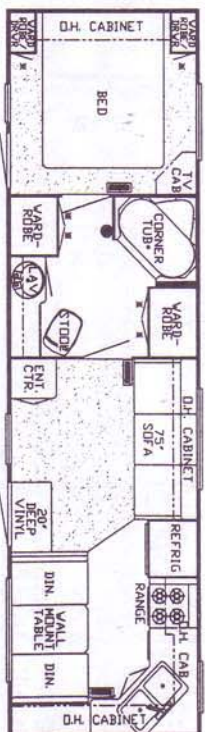
KS 28' RBTB



KS 28' WCB
Rear Bedroom Twin Bed



KS 30' FKL B
Rear Bedroom Twin Bed, Corner Shower,
Straight Tub, Straight Shower

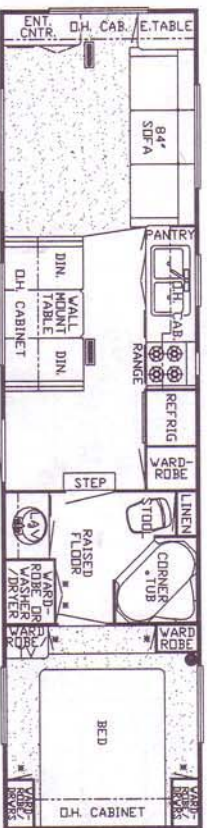


KS 32' AK
Rear Bedroom Twin Bed, Corner Shower,
Straight Tub, Straight Shower

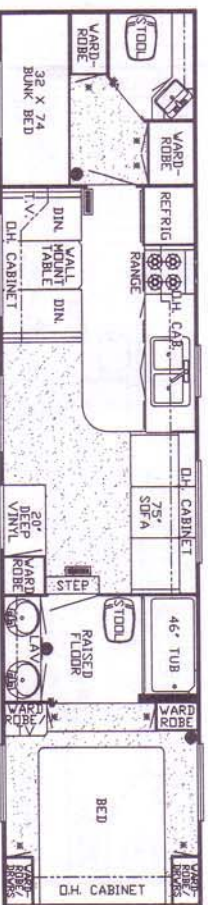


KS 32' CFKS
Rear Bedroom Twin Bed, Corner Shower,
Straight Tub, Straight Shower

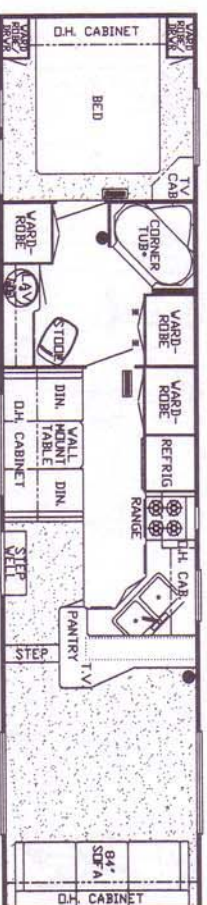
FIFTH-WHEELS



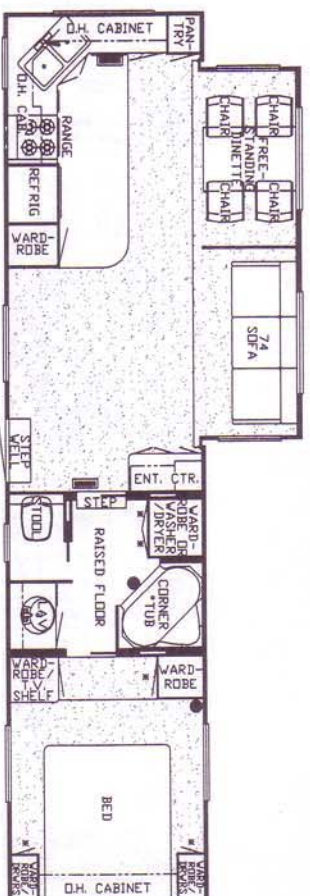
KS 33' RL
Cabover Bedroom Twin Bed, Corner Shower



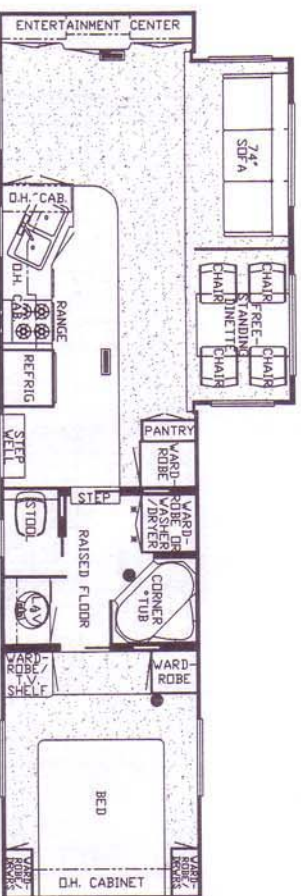
KS 36' DB
Cabover Bedroom Twin Bed



KS 36' FL
Cabover Bedroom Twin Bed, Corner Shower
Straight Tub, Straight Shower



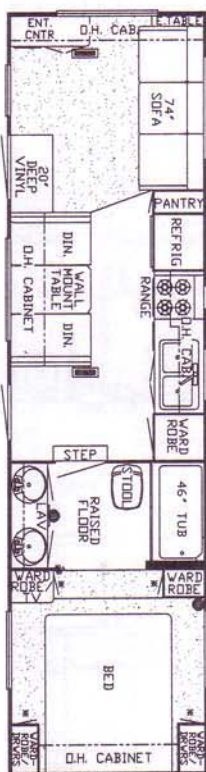
KS 36' RDK
Cabover Bedroom Twin Bed, Corner Shower,
Straight Tub, Straight Shower, Honeymoon Suite Cabover,
Honeymoon Suite w/Slideout



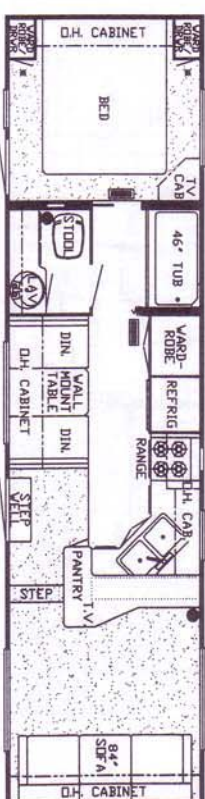
KS 36' RLKB
Cabover Bedroom Twin Bed, Corner Shower,
Straight Tub, Straight Shower, Honeymoon Suite Cabover,
Honeymoon Suite w/Slideout

"R" FACTOR VALUES				
	Standard	Polar Pak Option	Aluminum Standard	Aluminum Polar Pak Option
Sidewall	6	8	9	11
Roof	6	11	9	13
Floor	8	10	8	10

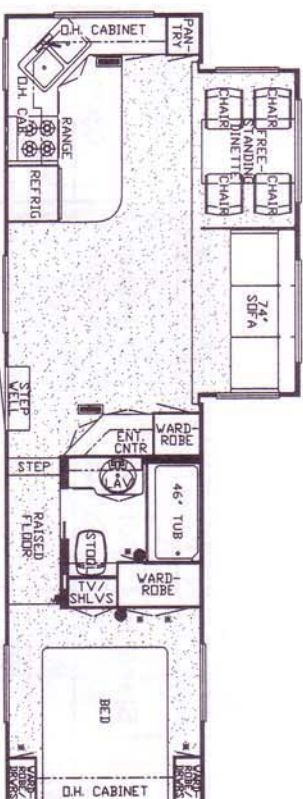
FIFTH-WHEELS



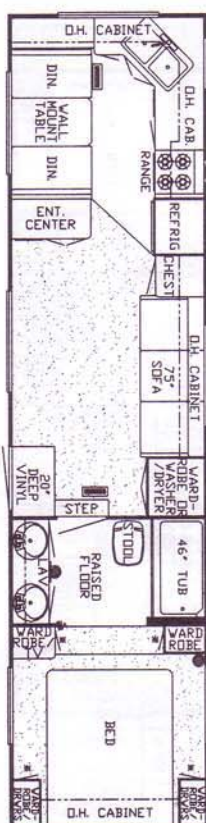
KS 31' RL
Cabover Bedroom Twin Bed



KS 32' FL
Cabover Bedroom Twin Bed



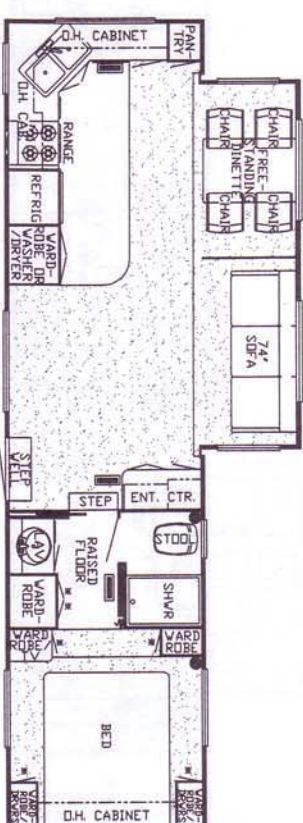
KS 32' RKSA
Cabover Bedroom Twin Bed



KS 33' AK
Cabover Bedroom Twin Bed

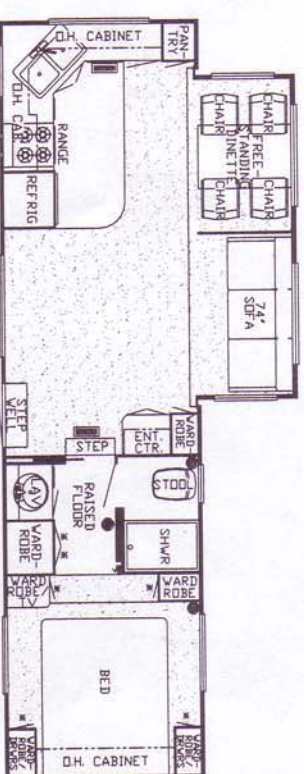
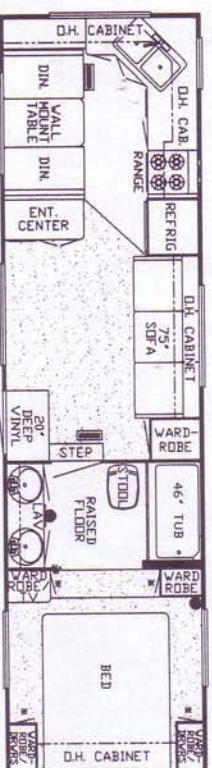
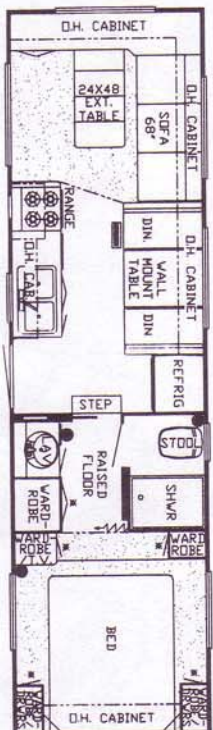
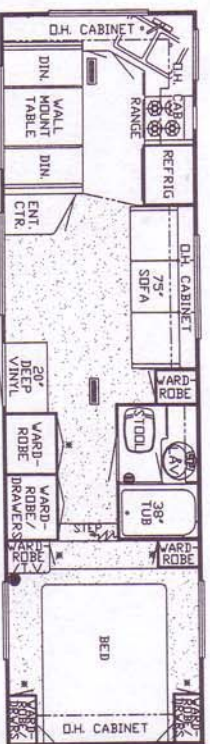
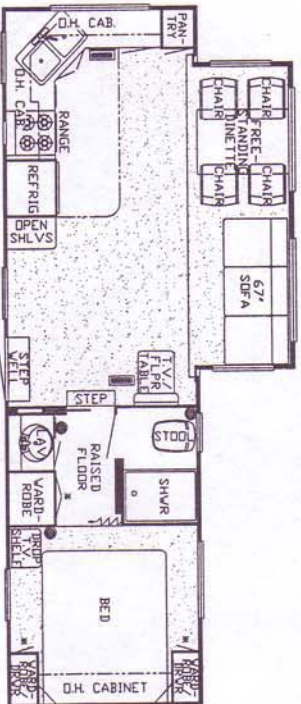
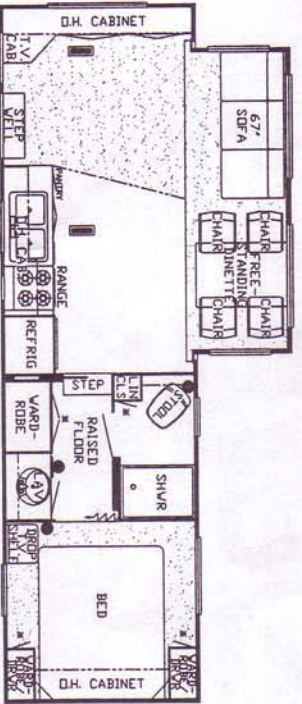


KS 33' DB
Cabover Bedroom Twin Bed



KS 33' RKWB
Cabover Bedroom Twin Bed

FIFTH-WHEELS





When America takes to the road for an RV vacation, the destination may be brand new or an old favorite. No matter which, if the choice of vehicle is from Newmar, the quality is always consistent. Since 1967 we've been helping America relax in style. That relaxation comes in part from our utilization of leading-edge technology and our obsession with old world craftsmanship and attention to detail.

You'll find both innovation and elegance on display in the lineup of 1994 Kountry Star Towables. Our design teams, who perfected the slideout, bring you the widest selection of floor plans, and best options, in the market. With their distinctive radius corners, the 1994 Kountry Star Towables are once again a promise renewed.



Kountry Star — *2 Year Limited Warranty on Superstructure

Newmar Corporation warrants the Superstructure which includes the following: Frame, and the framing in the Sidewalls and Roof. If any part of the Superstructure fails to perform properly because of faulty workmanship or materials supplied by Newmar, during the ownership of the original buyer, it will be repaired without charge for either parts or labor by Newmar providing the proper claim procedures are followed. All other items excluding the Superstructure are covered under the standard Newmar 1 Year Limited Warranty. See Owner's Manual for details





Begin your tour of America's great outdoors with a trip through the doors of Newmar in Nappanee, Indiana. You're invited to tour our plant weekdays 10 a.m. and 2 p.m. E.S.T. and learn firsthand how a Newmar RV, which embodies the principles of design innovation, old-world craftsmanship and uncompromising quality control, results in a world-class product.

Kountry Star exteriors are polar white.

You'll see how an RV is designed and built by people who are themselves experienced RV'ers. Their sole purpose, one they'll be glad to explain personally, is to ensure that your RV is as durable and dependable years down the road as it is the day it leaves Nappanee. You can't miss us, we're just off U.S. 6 west of town. We'll be looking forward to seeing you and welcoming you inside a company that is setting standards and initiating trends throughout the industry — Newmar Corporation.



355 N DELAWARE ST
P O BOX 30
NAPPANEE IN 46550-0030
(219) 773-7791 FAX (219) 773-2895

Scheduled plant tours Monday - Friday

Prices and specifications are subject to change at Newmar's discretion without written notice or obligation.