

AMERICAN STAR

KOUNTRY STAR



1996 American Star



1996 Kountry Star®

Fifth Wheel
and Travel Trailer

American Star • Kountry Star

Travel Trailers & Fifth Wheels by Newmar



Share in the benefits of joining the Newmar Kountry Klub, a "family" with a network of chapters throughout the United States and Canada.

All you need for eligibility is to be the proud owner of any one of the fine Newmar motorhomes and towables.

Newmar Kountry Klub

Compliments of:

A large rectangular box with a thin border, intended for a complimentary message or signature.



An American Tradition of Excellence.

355 N DELAWARE ST
PO BOX 30
NAPPANEE IN 46550-0030
1-219-773-7791
FAX 1-219-773-2895

This brochure has been compiled and edited with pride. We have attempted to make it as factual as possible. Newmar Corporation reserves the right to make changes in specifications, material and equipment without prior notice. Since some items may have been updated since this printing, please see your nearest Newmar Corporation dealer for complete details.

Kountry Star 5th Wheel

1996 Standards

Air Conditioning & Heating

Air Conditioner Prep (110 volt wiring)
Heat, in Floor Ducted
LP Gas Bottles, 2-30# w/Automatic
Regulator

Appliances & Accessories

Microwave Prep
Range Hood w/Light & Fan
Range, Wedgewood 3-Burner w/Black
Glass Oven Door
Refrigerator, Dometic Royale 3662
Refrigerator, Front Hardwood Raised Panel
Stereop Prep (antenna, speaker & 12 volt wire)
TV Antenna w/Power Booster & 2 Jacks
TV, Cable Ready
Water Heater, 6 Gallon Gas

Cabinets & Furniture

Bed, Queen (60" x 75")
Cabinetry, Oak w/Hardwood Frame Doors
Molded Silverware Divider Tray
Sofa, Flexsteel (sleeper)

Chassis Features

Easy Lube Equalizers
Frame Size, 12" I-Beam w/Maximum
Storage
Skid Bars for Rear Bottom Protection
Suspension, Triple Axle (40 WRKD)

Electrical Features

Battery, Thermoil (12 volt)
Converter, 50 AMP w/Charger
Electrical Service, 30 AMP
Recepts, 110 Volt w/Ground Fault
Interrupter (interior & exterior)

Exterior Features

Exterior Sides, Rigid Smooth Aluminum
Jacks, Stabilizer (1 pair)
Roof, One Piece Aluminum
Slideout, Large (see floorplans for
availability & layout)

Interior Features

Ceiling, Woven Soft Touch
Floor Covering, Carpet Staintech, 45 oz.
100% Nylon Plush Saxony
Floor Covering, Vinyl in Kitchen, Bath &
Foyer

Sink Covers, (2)

Smoke Detector & 5BC Fire Extinguisher
Window Treatment, Day/Night Pleated
Shades & Lined Drapes
Window Treatment, Mini Blinds (kitchen
& bath)

Plumbing / Bath Features

Bath Accessories, White (2 towel bars,
1 tissue holder & robe hook)
Monitor Panel
Stool, Aqua Magic IV
Tub/Shower Surround w/Enclosure
Winterize Convenience Package (w/water
heater bypass)

Construction Features

Floor Decking, Structurewood
Insulation, Fiberglass R7 Sidewalls, Floor
& Roof
Structurewood, Wood (screwed & glued)
Underbelly, Enclosed w/Insulation &
Molded Rear Bumper

Windows, Awnings & Vents

Step, Triple (slideout floorplans)
Vent, 12 Volt in Bath Area w/Wall Switch
Windows, Radius Torque

Optional Features

Option Packages

S6 XL Preferred Equipment.....224lbs
H6 XL Preferred Equipment.....67lbs
R6 XL Preferred Equipment.....213lbs

Air Conditioning & Heating

Air Conditioner, Brisk Air 13.5M BTU
(extra).....105lbs
Air Conditioner, Brisk Air 15M BTU
(extra).....110lbs
Air Conditioner, Brisk Air 15M BTU in
Place of R6 Air.....110lbs
LP Leak Detector.....1lb

Appliances & Accessories

Ceiling Fan.....10lbs
Microwave Oven, 22".....40lbs
Telephone Hookup w/Jack (1).....1lb
TV Jack for Exterior Use on Door Side.....1lb
TV Video Switch w/VCR Prep.....1lb
Washer/Dryer Prep (except 28 RBWS,
29 WRKD, 30 RLWB, 32 RKSA).....22lbs
Washer/Dryer, Sears (Except 28 RBWS,
29 WRKD, 30 RLWB).....269lbs

Cabinets & Furniture

Bed, Twins (not available w/cabover
slideout).....50lbs
Built-in Dinette in Place of Free Standing
Table/Chairs.....3lbs
Chair, Flexsteel Petite Glider/Recliner.....45lbs
Chair, Flexsteel Swivel Rocker.....43lbs
Chair, Flexsteel Swivel Glider/Recliner.....60lbs
Countertop Extension (28 RBWS, 34 RLDK,
36 DBLS, 36 RLDK).....7lbs
Honeymoon Suite Bedroom (except 28 WRKD,
30 RLWB, 32 RKSA, 36 DBLS).....100lbs
Sofa, Storage Cabinet (except 40 RKWB).....75lbs

Chassis Features

Spare Tire & Carrier (16" E range) (except 36
DBLS, 36 RKWB, 36 RLDK, 36 RLWB).....90lbs
Spare Tire (16" G range) (36 DBLS, 36
RKWB, 36 RLDK, 36 RLWB).....90lbs
Spare Tire Cover.....5lbs

Electrical Features

Electrical Service, 50 AMP.....20lbs
Light, Exterior Security (each).....1lb
Lighting, Fluorescent Recessed
in Ceiling.....1lb

Exterior Features

Roof, Rubber (priced per foot)
Slideout in Cabover (except 28 RBWS)

Interior Features

Floor Covering, Carpet in Bath.....30lbs
Floor Covering, Hardwood Plank in
Kitchen Area & Foyer Area.....30lbs
State Seal.....0lbs

Plumbing / Bath Features

Sewage Holding Tank Rinse.....75lbs

Construction Features

Structure, Aluminum Sidewalls/Roof
w/Laminated 5/8" Bead Foam (per foot)

Windows, Awnings & Vents

Awning, Side A & E 8500.....83lbs
Awning, Side Tension Rafter.....5lbs
Awning Window, A & E 8500 (per window)
Skylight in Bathroom w/Soft Shade.....2lbs
Vent, 12 Volt Fantastic w/Rain Sensor in
Kitchen.....11lbs

Option Packages

S6 XL

Preferred Equipment

Exterior Front & Rear Gel-Coated
Fiberglass End Caps
Roof Rack & Ladder
Jack, 12 Volt Powered
Insulation, Polar Pak
(R19 fiberglass in floor & roof)
Bright Lug Nuts

H6 XL

Preferred Equipment

Complexion Light in Bathroom
w/Wall Switch
Convenience Light at Main Entrance
Door Step
Convenience Light in Each Wardrobe
Full-Length Dressing Mirror
High Density Carpet Pad
Interior Assist Handle at Main
Entrance Door
Oak Hardwood Raised Panel Cabinet
Doors
Drawers w/Metal Guides & Side Rollers
Lifts for Convenient Storage Under
Fixed Beds
Bedspread, Quilted w/Reversed
Shams & Accent Pillow
Beveled Mirror Framed Wall Clock

R6 XL

Preferred Equipment

Air Conditioner, Central Brisk Air
13.5M BTU (1)
Range Cover
Tub/Shower, Fiberglass w/Enclosure
Water Heater, 10 Gallon Gas/Electric
w/Reignitor
Stereo, AM/FM Cassette w/Clock
Telephone Hookup w/Jack (1)
Converter, 75 AMP w/Charger
Refrigerator, Dometic Royale 3862

American Star Travel Trailer Sizes and Capacities

Unit	Approx. Length	Approx. Height	Approx. Width	Approx. Weight	Approx. Hitch Weight	Fresh Water Cap.	Grey Water Cap.	Sewage Water Cap.	Heating Cap.	No. Axle	Axle Cap.	Tire	GAWR	GVWR
ASTT25CB	26' 3"	10' 3"	96"	4475	525	42 GAL	42 GAL	42 GAL	20000	2	3500	205-75 R 15 C	3500	7000
ASTT25RB	26' 3"	10' 3"	96"	4475	525	42 GAL	42 GAL	42 GAL	20000	3	3500	205-75 R 15 C	3500	7000
ASTT26DB	28' 0"	10' 3"	96"	4800	520	42 GAL	42 GAL	42 GAL	20000	2	3500	205-75 R 15 C	3500	7900
ASTT28FK	29' 4"	10' 3"	96"	5125	500	42 GAL	42 GAL	42 GAL	25000	2	3500	205-75 R 15 C	3500	7900
ASTT28RBTB	29' 7"	10' 3"	96"	4675	700	42 GAL	42 GAL	42 GAL	25000	2	3500	205-75 R 15 C	3500	7900
ASTT28WCB	29' 7"	10' 3"	96"	5100	550	42 GAL	42 GAL	42 GAL	25000	2	3500	205-75 R 15 C	3500	7900
ASTT30DBWS	31' 9"	10' 11"	96"	7450	850	42 GAL	42 GAL	42 GAL	30000	2	5200	225-75 R 15 D	5000	10400
ASTT30FKLB	31' 3"	10' 3"	96"	5500	830	42 GAL	42 GAL	42 GAL	30000	2	5200	225-75 R 15 D	5000	10400
ASTT32AK	32' 10"	10' 4"	96"	5700	850	42 GAL	42 GAL	42 GAL	30000	2	5200	225-75 R 15 D	5000	10400
										2	5200	225-75 R 15 D	5000	10400

American Star Travel Trailer Chassis Information

American Star 5th Wheel Sizes and Capacities

Unit	Approx. Length	Approx. Height	Approx. Width	Approx. Weight	Approx. Hitch Weight	Fresh Water Cap.	Grey Water Cap.	Sewage Water Cap.	Heating Cap.	No. Axle	Axle Cap.	Tire	GAWR	GVWR
ASFW22FB	21' 5"	10' 7"	96"	4575	575	42 GAL	42 GAL	42 GAL	20000	2	3500	205-75 R 15 C	3500	7900
ASFW24RL	24' 4"	11' 7"	96"	5400	775	42 GAL	42 GAL	42 GAL	20000	2	3500	205-75 R 15 C	3500	7900
ASFW25BB	25' 1"	11' 7"	96"	5025	775	42 GAL	42 GAL	42 GAL	30000	2	3500	205-75 R 15 C	3500	7900
ASFW25WRKD	25' 1"	11' 7"	96"	6950	1275	42 GAL	42 GAL	42 GAL	30000	2	5200	225-75 R 15 D	5000	7900
ASFW26RK	26' 4"	11' 7"	96"	5475	950	42 GAL	42 GAL	42 GAL	25000	2	3500	205-75 R 15 C	3500	7900
ASFW28RBWS	28' 8"	11' 11"	96"	7775	1350	42 GAL	42 GAL	42 GAL	30000	2	5200	225-75 R 15 D	5000	10400
ASFW28WDSK	28' 8"	11' 11"	96"	8150	1300	42 GAL	42 GAL	42 GAL	30000	2	5200	225-75 R 15 D	5000	10400
ASFW28WRKD	28' 8"	11' 11"	96"	7675	1500	42 GAL	42 GAL	42 GAL	30000	2	5200	225-75 R 15 D	5000	10400
ASFW29WRKD	29' 5"	11' 11"	96"	7375	1200	42 GAL	42 GAL	42 GAL	30000	2	5200	225-75 R 15 D	5000	10400
ASFW30RLWB	29' 5"	11' 11"	96"	7500	1500	42 GAL	42 GAL	42 GAL	35000	2	5200	225-75 R 15 D	5000	10400
ASFW31RKWB	29' 5"	11' 11"	96"	7725	1575	42 GAL	42 GAL	42 GAL	35000	2	5200	225-75 R 15 D	5000	10400
ASFW32RKSA	31' 7"	11' 11"	96"	8225	1575	42 GAL	42 GAL	42 GAL	35000	2	5200	225-75 R 15 D	5000	11000
ASFW33DBLS	32' 7"	11' 11"	96"	8725	1550	42 GAL	42 GAL	42 GAL	35000	2	5200	225-75 R 15 D	5000	11000
ASFW33WRKD	32' 7"	11' 11"	96"	8750	1550	42 GAL	42 GAL	42 GAL	35000	2	5200	225-75 R 15 D	5000	11000
ASFW36DBLS	36' 2"	11' 11"	96"	9000	1600	42 GAL	42 GAL	42 GAL	35000	2	6000	235-85 R 16 E	6000	13000

American Star 5th Wheel Chassis Information

Kountry Star Travel Trailer Sizes and Capacities

Unit	Approx. Length	Approx. Height	Approx. Width	Approx. Weight	Approx. Hitch Weight	Fresh Water Cap.	Grey Water Cap.	Sewage Water Cap.	Heating Cap.	No. Axle	Axle Cap.	Tire	GAWR	GVWR
KSTT30DBWS	31' 6"	10' 11"	96"	8000	1080	42 GAL	42 GAL	42 GAL	35000	2	6000	235-85 R 16 E	6000	12000
KSTT32CFKS	32' 6"	10' 11"	96"	8300	1100	42 GAL	42 GAL	42 GAL	35000	2	6000	235-85 R 16 E	6000	12000
KSTT35CFLS	35' 10"	10' 11"	96"	9150	1300	42 GAL	42 GAL	42 GAL	35000	2	6000	235-85 R 16 E	6000	12000

Kountry Star Travel Trailer Chassis Information

Kountry Star 5th Wheel Sizes and Capacities

Unit	Approx. Length	Approx. Height	Approx. Width	Approx. Weight	Approx. Hitch Weight	Fresh Water Cap.	Grey Water Cap.	Sewage Water Cap.	Heating Cap.	No. Axle	Axle Cap.	Tire	GAWR	GVWR
KSF28RBWS	28' 6"	11' 11"	96"	8475	1650	42 GAL	42 GAL	42 GAL	30000	2	5200	235-85 R 16 E	5000	11000
KSF29WRKD	29' 5"	11' 11"	96"	8425	1475	42 GAL	42 GAL	42 GAL	30000	2	5200	235-85 R 16 E	5000	11000
KSF30RLWB	30' 4"	11' 11"	96"	8800	1175	42 GAL	42 GAL	42 GAL	35000	2	6000	235-85 R 16 E	6000	12000
KSF32RKSA	32' 3"	11' 11"	96"	9450	1925	42 GAL	42 GAL	42 GAL	35000	2	6000	235-85 R 16 E	6000	12500
KSF33WRKD	33' 6"	11' 11"	96"	9375	1725	42 GAL	42 GAL	42 GAL	40000	2	6000	235-85 R 16 E	6000	12500
KSF34RKSA	35' 1"	11' 11"	96"	9875	1650	42 GAL	42 GAL	42 GAL	40000	2	6000	238-85 R 16 E	6000	12500
KSF34RLDK	35' 1"	11' 11"	96"	9875	1650	42 GAL	42 GAL	42 GAL	40000	2	6000	235-85 R 16 E	6000	12500
KSF36DBLS	36' 3"	11' 11"	96"	10950	2275	42 GAL	42 GAL	42 GAL	40000	2	7000	235-85 R 16 G	7000	15000
KSF36RKWB	36' 3"	11' 11"	96"	10450	2400	42 GAL	42 GAL	42 GAL	55000	2	7000	235-85 R 16 G	7000	15000
KSF36RLDK	36' 3"	11' 11"	96"	9750	2400	42 GAL	42 GAL	42 GAL	55000	2	7000	235-85 R 16 G	7000	15000
KSF36RLWB	36' 3"	11' 11"	96"	10375	2350	42 GAL	42 GAL	42 GAL	55000	2	7000	235-85 R 16 G	7000	15000

Kountry Star 5th Wheel Chassis Information

Kountry Star 5th Wheel

1996 Floor Plans



Kountry Star Travel Trailer

1996 Standards

Air Conditioning & Heating

Air Conditioner Prep (110 volt wiring)
Heat, in Floor Ducted
LP ABS Gas Bottle Cover (30# bottles)
LP Gas Bottles, 2-30# w/Automatic
Regulator

Appliances & Accessories

Microwave Prep
Range Hood w/Light & Fan
Range, Wedgewood 3-Burner w/Black
Glass Oven Door
Refrigerator, Dometic Royale 3662
Refrigerator Front, Hardwood Raised
Panel
Stereo Prep (antenna, speaker wire & 12
volt wire)

TV Antenna w/Power Booster & 2 Jacks
TV, Cable Ready
Water Heater, 6 Gallon Gas

Cabinets & Furniture

Bed, Queen (60" x 75")
Cabinetry, Oak w/Hardwood Frame Doors
Molded Silverware Divider Tray
Sofa, Flexsteel (sleeper)

Chassis Features

Easy Lube Equalizers
Frame Size, 12" I-Beam w/Maximum
Storage
Safety Chains
Shock Absorbers
Skid Bars for Rear Bottom Protection

Electrical Features

Battery, Thermoil (12 volt)
Converter, 50 AMP w/Charger
Electrical Service, 30 AMP
Recepts, 110 Volt w/Ground Fault
Interrupter (interior & exterior)

Exterior Features

Exterior Sides, Rigid Smooth Aluminum
Roof, One Piece Aluminum
*Slideout, Large (see floorplans
for availability & layout)*

Interior Features

Ceiling, Woven Soft Touch
Floor Covering, Carpet Staintech, 45 oz.
100% Nylon Plush Saxony
Floor Covering, Vinyl in Kitchen, Bath &
Foyer
Sink Covers, (2)
Smoke Detector & 5BC Fire Extinguisher
Window Treatments, Day/Night Pleated
Shades & Lined Drapes
Window Treatments, Mini Blinds (kitchen
& bath)

Plumbing / Bath Features

Bath Accessories, White (2 towel bars,
tissue holder & robe hook)

Monitor Panel
Stool, Aqua Magic IV
Winterize Convenience Package
(w/water heater bypass)

Construction Features

Floor Decking, Structurewood
Insulation, Fiberglass R7 Sidewalls,
Floor & Roof
Structure, Wood (screwed & glued)
Underbelly Enclosed w/Insulation
& Molded Rear Bumper

Windows, Awnings & Vents

Awning, Front (except 35 CFLS)
Step, Triple
Vent, 12 Volt in Bath Area w/Wall Switch
Windows, Radius Torque

Optional Features

Option Packages

S6 XL Preferred Equipment.....224lbs
H6 XL Preferred Equipment.....67lbs
R6 XL Preferred Equipment.....213lbs

Air Conditioning & Heating

Air Conditioner, Brisk Air 13.5M BTU
(extra).....105lbs
Air Conditioner, Brisk Air 15M BTU
(extra).....110lbs
Air Conditioner, Brisk Air 15M BTU
in Place of R6 Air.....10lbs
LP Leak Detector.....1lb

Appliances & Accessories

Microwave Oven, 22".....40lbs
Telephone Hookup w/Jack (1).....1lb
TV Jack for Exterior Use on Door Side....1lb
TV Video Switch w/VCR Prep.....1lb
Washer/Dryer Prep (32 CFKS, 35 CFLS).....22lbs
Washer/Dryer, Sears (32 CFKS,
35 CFLS).....269lbs

Cabinets & Furniture

Bed, Twins (except 35 CFLS).....50lbs
Built-in Dinette in Place of Free Standing
Table/Chairs.....3lbs
Chair, Flexsteel Petite Glider/Recliner....45lbs
Chair, Flexsteel Swivel Glider, Recliner...60lbs
Chair, Flexsteel Swivel Rocker.....43lbs
Countertop Extension (30 DBWS,
35 CFLS).....7lbs

Chassis Features

Spare Tire & Carrier (16" E range).....90lbs
Spare Tire Cover.....5lbs

Electrical Features

Electrical Service, 50 AMPS.....20lbs
Light, Exterior Security (each).....1lb
Lighting, Fluorescent Recessed in Ceiling.....1lb

Exterior Features

Jacks, Stabilizer (2 pair).....40lbs
Roof, Rubber (priced per foot)

Interior Features

Floor Covering, Carpet in Bath.....30lbs
Floor Covering, Hardwood Plank in
Kitchen & Foyer Area.....30lbs
State Seal.....0lbs

Plumbing / Bath Features

Sewage Holding Tank Rinse.....1lb

Construction Features

Structure, Aluminum Sidewalls/Roof
w/Laminated 5/8" Bead Foam
(per foot).....8lbs

Windows, Awnings & Vents

Awning Side A & E 8500.....83lbs
Awning Side Tension Rafter.....5lbs
Awning Window A & E 8500
(per window).....5lbs
Skylight in Bathroom w/Soft Shade.....2lbs
Vent, 12 Volt Fantastic w/Rain
Sensor in Kitchen.....11lbs

Option Packages

S6 XL

Preferred Equipment

Exterior Front & Rear Gel-Coated
Fiberglass End Caps
Roof Rack & Ladder
Jack, 12 Volt Powered
Insulation, Polar Pak
(R19 fiberglass in floor & roof)
Bright Lug Nuts

H6 XL

Preferred Equipment

Complexion Light in Bathroom
w/Wall Switch
Convenience Light at Main Entrance Door
Convenience Light in Each Wardrobe
Full-Length Dressing Mirror
High Density Carpet Pad
Interior Assist Handle at Main Entrance
Door Step
Oak Hardwood Raised Panel Cabinet Doors

Drawers w/Metal Guides & Side Rollers

Lifts for Convenient Storage

Under Fixed Beds
Bedspread, Quilted w/Reversed Shams
& Accent Pillow
Beveled Mirror Framed Wall Clock

R6 XL

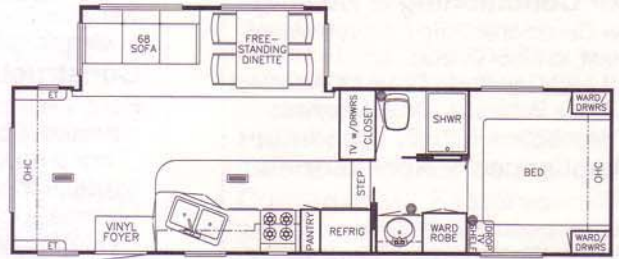
Preferred Equipment

Air Conditioner, Central Brisk Air
13.5M BTU (1)
Converter, 75 AMP w/Charger
Refrigerator, Dometic Royale 3862
Range Cover
Tub/Shower, Fiberglass w/
Enclosure
Water Heater, 10 Gallon Gas/
Electric w/Reigniter
Stereo, AM/FM Cassette w/Clock
Telephone Hookup w/Jack (1)

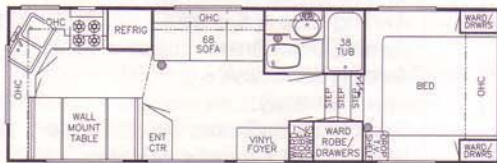




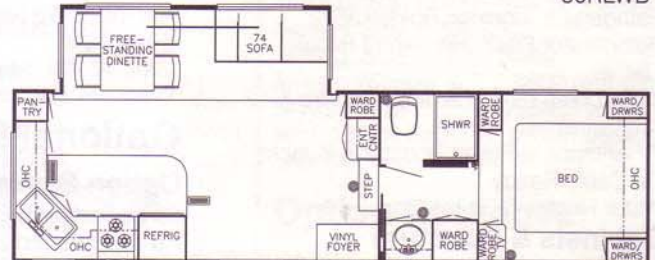
25WRKD



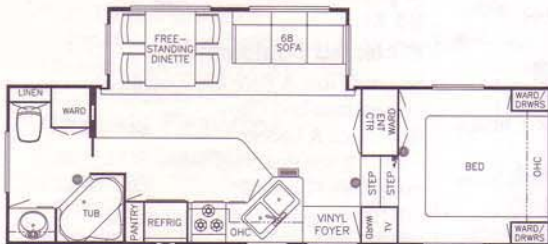
30RLWB



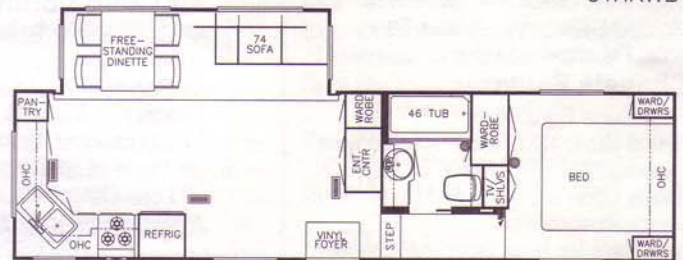
26RK



31RKWB



28RBWS



32RKSA



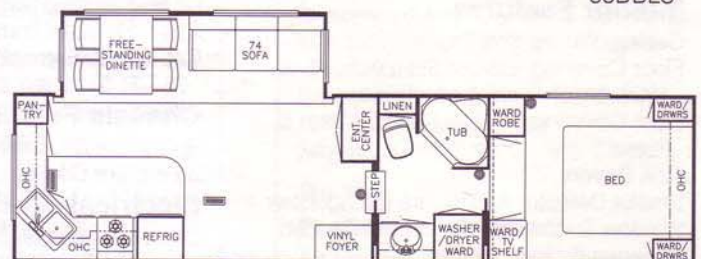
28WDSK



33DBLS



28WRKD



33WRKD



American Star 5th Wheel

1996 Standards

Air Conditioning & Heating

Air Conditioner Prep (110 volt wiring)
Heat, in Floor Ducted
(except 24 FB, 24 RL, 25 BB)
LP Gas Bottles, 2-30# w/Automatic
Regulator

Appliances & Accessories

Microwave Prep
Range Cover
Range Hood w/Light & Fan
Range, Wedgewood 3-Burner w/Oven
Refrigerator, Dometic Double Door 2607.2
Stereo, AM/FM Cassette
TV Antenna w/Power Booster & 2 Jacks
Water Heater, 6 Gallon Gas/
Electric w/Reigniter

Cabinets & Furniture

Cabinetry, Oak w/Hardwood Frame Doors
Lifts for Convenient Storage Under
Fixed Beds
Molded Silverware Divider Tray
Sofa, Flexsteel (sleeper)

Chassis Features

Frame Size, 12" I-Beam (except 22 FB, 24
RL, 25 BB, 26 RK)
Skid Bars for Rear Bottom Protection

Electrical Features

Battery, Thermoil (12 volt)
Converter, 40 AMP w/Charger
Electrical Service, 30 AMP
Recepts, 110 Volt w/Ground Fault
Interrupter (interior & exterior)

Exterior Features

Bumper w/Sewer Hose Storage
Exterior Sides, Ribbed Aluminum
Roof, One Piece Aluminum
Slideout, Large (see floorplans for
availability & layout)

Interior Features

Bedsprad, Quilted w/Reversed Shams (1)
Floor Covering, Carpet w/Pad Living Room
& Bedroom
Floor Covering, Vinyl in Kitchen, Bath
& Foyer
Sink Cover, (1)
Smoke Detector & 5BC Fire Extinguisher
Window Treatment, Mini Blinds Throughout

Plumbing / Bath Features

Bath Accessories, White (2 towel bars,
1 tissue holder)
Monitor Panel
Stool, Aqua Magic IV
Tub/Shower Surround w/Enclosure
Winterize Convenience Package (w/water
heater bypass)

Construction Features

Floor Decking, Structurewood
Insulation, Fiberglass R7 Sidewalls, Floor
& Roof
Underbelly, Enclosed w/Fiberglass
Insulation (except 22 FB, 24 RL, 25 BB,
26 RK)

Windows, Awnings & Vents

Radius Entrance Door w/Deadbolt
Step, Double (non-slideout floorplans)
Step, Triple (slideout floorplans)
Vent, 12 Volt in Bath Area w/Wall Switch
Windows, Radius Torque

Optional Features

Option Packages

A6 Preferred Equipment.....255lbs
C6 XL Interior Preferred Equipment....87lbs
M6 XL Exterior Preferred Equipment...237lbs

Air Conditioning & Heating

Air Conditioner, Ducted 13.5M in
Place of A6 Air.....2lbs
Air Conditioner, Ducted 15M in
Place of A6 Air.....5lbs
LP Leak Detector.....1lb

Appliances & Accessories

Refrigerator, Dometic Double
Door 2807.2.....10lbs
Telephone Hookup w/Jack (1).....1lbs
TV Jack (extra).....1lbs
TV Jack for Exterior Use on Door Side..1lbs
Washer/Dryer Prep (33 DBLS, 33 WRKD,
36 DBLS).....22lbs
Washer/Dryer, Sears (33 DBLS, 33 WRKD,
36 DBLS).....269lbs

Cabinets & Furniture

Bed, Twins (except 22 FB, 25 BB). .50lbs
Built-in Dinette in Place of Free Standing
Table/Chairs.....3lbs
Chair, Flexsteel Petite Glider/Recliner..45lbs
Chair, Flexsteel Swivel Rocker.....43lbs
Countertop Extension (22 FB, 24 RL, 25 BB, 28
RBWS, 28 WDSK, 33 DBLS).....7lbs
Dinette Table, Drop Leaf w/2 Chairs in
Place of Built-in Dinette (22 FB, 24 RL,
25 BB, 26 RK).....3lbs
Honeymoon Suite Bedroom
(33WRKD).....100lbs
Sofa, Flexsteel 68" Hide-A-Bed (except
22 FB, 24 RL, 25 BB, 26 RK).....75lbs

Chassis Features

Shock Absorbers.....2lbs
Spare Tire & Carrier (16" E range)
(available w/16" tire option).....90lbs
Spare Tire & Carrier 15".....70lbs
Tires, 16" Radials E Range, Set of 4 (except
22FB, 24 RL, 25 BB, 26 RK).....80lbs

Electrical Features

Light, Exterior Security (each).....1lbs
Electrical Service, 50 amps.....20 lbs

Exterior Features

Jack, 12 Volt
Powered.....10lbs
Roof Rack &
Ladder.....4lbs
Roof, Rubber (priced per foot)

Interior Features

Floor Covering, Hardwood Plank in
Kitchen Area.....30lbs
Floor Covering, Vinyl Throughout (not
available in cabover area).....20lbs
State Seal.....0lbs

Plumbing / Bath Features

Tub/Shower, Fiberglass.....75lbs

Construction Features

Radius, Bottom Wrap (22 FB, 22 RL,
25 BB, 26 RK).....15lbs

Windows, Awnings & Vents

Awning, Side Tension Rafter.....5lbs
Skylight in Bathroom w/Soft Shade....2lbs
Vent, 12 Volt Fantastic w/Rain
Sensor inKitchen.....11lbs
Vent, Non-Power.....3lbs

Option Packages

A6

Preferred Equipment

Bed, Queen (60" x 75")
TV, Cable Ready
Air Conditioner,
13.5 BTU Brisk Air
Rear Awning
(on floorplans w/rear window)
Converter, 75 AMP w/Charger
Side Awning, Carefree Fiesta
Microwave Oven, 22"

C6 XL Interior

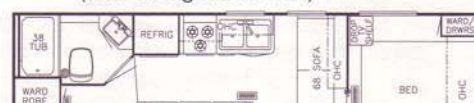
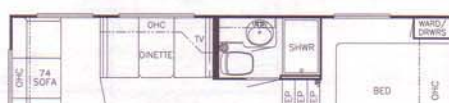
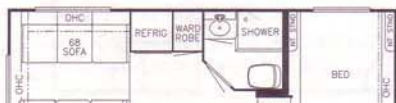
Preferred Equipment

Beveled Mirror Framed
Wall Clock
Lavatory Faucet, Single
Handle
Oak Hardwood Raised Panel
Overhead Cabinet Doors
Sofa Throw Pillows
Complexion Light in Bathroom
w/Wall Switch
Refrigerator Front, Hardwood
Raised Panel
Decorative Wall Lights in Bedroom

M6 XL Exterior

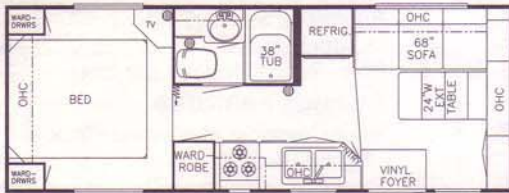
Preferred Equipment

Exterior Gel-Coated Fiberglass
End Caps
Stabilizer Jacks, (1 pr. FW) (2 pr. TT)
Bumper Cover, Aluminum
Decorative White Lug Nut Covers
Insulation Polar Pak
(R11 fiberglass in roof)

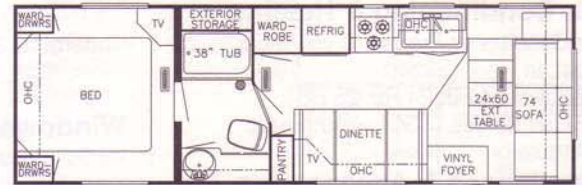


American Star Travel Trailer

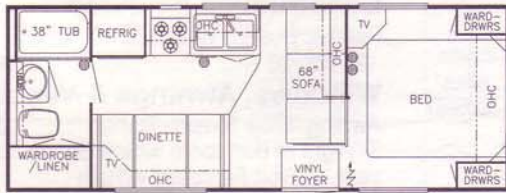
1996 Floor Plans



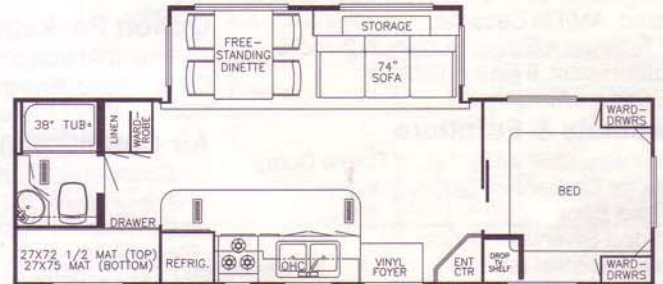
25CB



28WCB



25RB



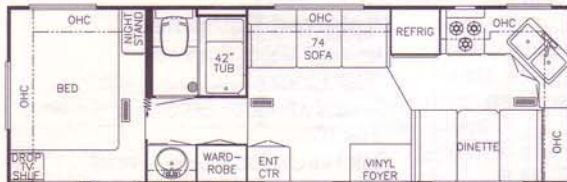
30DBWS



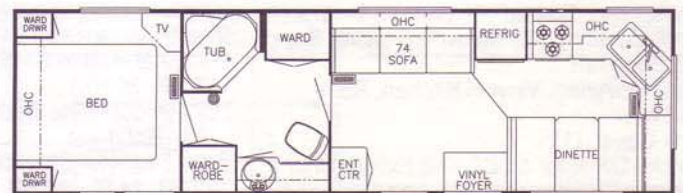
26DB



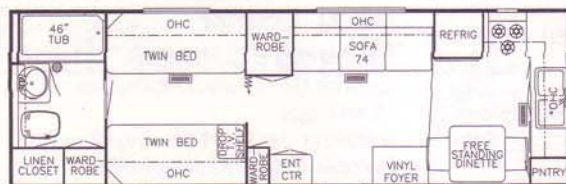
30FKLB



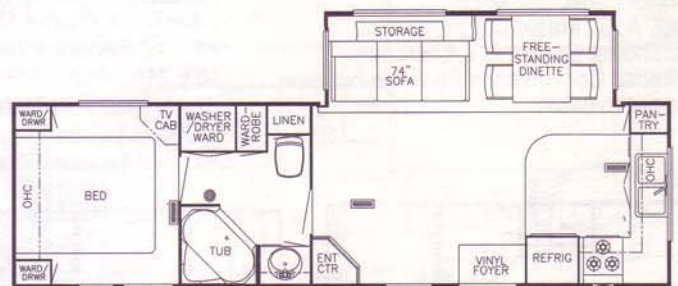
28FK



32AK



28RBTB



American Star Travel Trailer

1996 Standards

Air Conditioning & Heating

Air Conditioner Prep (110 volt wiring)
Heat, in Floor Ducted
(except 25 CB, 25 RB)
LP ABS Gas Bottle Cover (30# bottles)
LP Gas Bottles, 2-30#
w/Automatic Regulator

Appliances & Accessories

Microwave Prep
Range Cover
Range Hood w/Light & Fan
Range, Wedgewood 3-Burner w/Oven
Refrigerator, Dometic Double Door 2607.2
Stereo, AM/FM Cassette
TV Antenna w/Power Booster & 2 Jacks
Water Heater, 6 Gallon Gas/Electric
w/Reigniter

Cabinets & Furniture

Cabinetry, Oak w/Hardwood Frame Doors
Lifts for Convenient Storage Under
Fixed Beds
Molded Silverware Divider Tray
Sofa, Flexsteel (sleeper)

Chassis Features

Frame Size, 12" I-Beam
(30 DBWS, 32 CFKS)
Safety Chains
Skid Bars for Rear Bottom Protection

Electrical Features

Battery, Thermoil (12 volt)
Converter, 40 AMP w/Charger
Electrical Service, 30 AMP
Recepts, 110 Volt w/Ground Fault
Interrupter (interior & exterior)

Exterior Features

Bumper w/Sewer Hose Storage
Exterior Sides, Ribbed Aluminum
Roof, One Piece Aluminum
Slideout, Large
(see floorplans for availability & layout)

Interior Features

Bedsprad, Quilted w/Reversed Shams (1)
Floor Covering, Carpet w/Pad, Living
Room & Bedroom
Floor Covering, Vinyl in Kitchen,
Bath & Foyer
Sink Cover (1)
Smoke Detector & 5BC Fire Extinguisher
Window Treatments, Mini Blinds
Throughout

Plumbing / Bath Features

Bath Accessories, White
(2 towel bars, 1 tissue holder)
Monitor Panel
Stool, Aqua Magic IV
Tub/Shower Surround w/Enclosure
Winterize Convenience Package
(w/water heater bypass)

Construction Features

Floor Decking, Structurewood
Insulation, Fiberglass R7 Sidewalls,
Floor & Roof
Underbelly Enclosed w/Fiberglass
Insulation (30 DBWS, 32 CFKS)

Windows, Awnings & Vents

Awning, Front
Radius Entrance Door w/Deadbolt
Step, Double (non-slideout floorplans)
Vent, 12 Volt in Bath Area w/Wall Switch
Windows, Radius Torque

Optional Features

Option Packages

A6 Preferred Equipment.....255lbs
C6 XL Interior Preferred Equipment87lbs
M6 XL Exterior Preferred Equipment..237lbs

Air Conditioning & Heating

Air Conditioner, Ducted 13.5M
in Place of A6 Air.....2lbs
Air Conditioner, Ducted 15M
in Place of A6 Air.....5lbs
LP Leak Detector.....1lb

Appliances & Accessories

Refrigerator, Dometic
Double Door 2807.210lbs
Telephone Hookup w/Jack (1).....1lb
TV Jack (extra).....1lb
TV Jack for Exterior Use on
Door Side.....1lb
Washer/Dryer Prep (32 CFKS)22lbs
Washer/Dryer, Sears (32 CFKS)269lbs

Cabinets & Furniture

Bed, Twins (except 26 DB, 28 RBTB,
28 FK).....50lbs
Built-in Dinette in Place of
Free Standing Table/Chairs3lbs
Bunks, Cabinet w/Twin Beds (except 25 CB,
25 RB, 26 DB, 28 RBTB, 28 FK)100lbs
Bunks, Fixed w/Twin Beds (except 25 CB,
25 RB, 26 DB, 28 RBTB, 28 FK).....120lbs
Chair, Flexsteel Petite Glider/
Recliner.....45lbs
Chair, Flexsteel Swivel Rocker.....43lbs
Countertop Extension (22 RB, 26 DB,
30 DBWS).....7lbs
Dinette Table, Drop Leaf w/2 Chairs in
Place of Built-in Dinette (25 RB, 26 DB,
28 FK, 28 WCB 30 FKLB, 32 AK).....3lbs
Sofa, Flexsteel 68" Hide-A-Bed
(30 DBWS, 32 CFKS).....75lbs

Chassis Features

Shock Absorbers.....2lbs
Spare Tire & Carrier (16" E range)
(available w/16" tire option).....90lbs
Spare Tire & Carrier 15".....70lbs
Tires, 16" E Range Radials, Set of Four
(30 DBWS, 32 CFKS).....80lbs

Electrical Features

Light, Exterior Security (each).....1lbs
Electrical Service, 50 AMPS.....20lbs

Exterior Features

Jack, 12 Volt Powered.....10lbs
Roof Rack & Ladder.....4lbs
Roof, Rubber (priced per foot)

Interior Features

Floor Covering, Hardwood Plank
in Kitchen Area.....30lbs
Floor Covering, Vinyl Throughout...20lbs
State Seal.....0lbs

Plumbing / Bath Features

Tub/Shower Fiberglass.....75lbs

Construction Features

Radius Bottom Wrap (except 30 DBWS,
32 CFKS).....15lbs

Windows, Awnings & Vents

Awning, Side Tension Rafter.....5lbs
Skylight in Bathroom w/Soft Shade...2lbs
Vent, 12 Volt Fantastic
w/Rain Sensor in Kitchen.....11lbs
Vent, Non-Power.....3lbs

Option Packages

A6

Preferred Equipment

Bed, Queen (60" x 75")
TV, Cable Ready
Air Conditioner,
13.5 BTU Brisk Air
Rear Awning
(on floorplans w/rear window)
Converter, 75 AMP w/Charger
Side Awning, Carefree Fiesta
Microwave Oven, 22"

C6 XL Interior

Preferred Equipment

Beveled Mirror Framed Wall Clock
Lavatory Faucet, Single Handle
Oak Hardwood Raised Panel
Overhead Cabinet Doors
Sofa Throw Pillows
Complexion Light in Bathroom
w/Wall Switch
Refrigerator Front, Hardwood
Raised Panel
Decorative Wall Lights in Bedroom

M6 XL Exterior

Preferred Equipment

Exterior Gel-Coated Fiberglass
End Caps
Stabilizer Jacks (1 pr. FW/2 pr. TT)
Bumper Cover, Aluminum
Decorative White Lug Nut Covers
Insulation Polar Pak
(R11 fiberglass in roof)

AMERICAN STAR

KOUNTRY STAR



American Star Fifth Wheel & Travel Trailer



Kountry Star® Fifth Wheel & Travel Trailer



**1996 Travel Trailers and Fifth Wheels
by Newmar
Specifications & Floor Plans**



1996 American Star Travel Trailer



1996 Kountry Star® Travel Trailer



1996 American Star 5th Wheel



1996 Kountry Star® 5th Wheel

"Uncompromising work standards are only a part of what Newmar's world-class quality is all about. Professionals working together to produce distinctive, dependable and durable products that will serve you for many years. Our aim is to maintain the highest standards in quality and customer service.

We invite you to visit our new, built in 1995, state-of-the-art production facility in Nappanee, Indiana. Tours are offered weekdays at 10:00 A.M. and 2:00 P.M. E.S.T."

Mahlon A. Miller
Chairman of the Board

Newmar Kountry Klub

Don't forget to check out the Klub - the Newmar Kountry Klub, that is. All you need to be eligible is to be the proud owner of any one of the fine Newmar recreational vehicles.

Compliments of:

Newmar Corp.
An American Tradition of Excellence.

355 N DELAWARE ST
P O BOX 30

NAPPANEE, IN 47550-0030



Kountry Star® 5th Wheel

With the push of a button, this Newmar slideout is large enough to extend both the dining and living room areas, giving it that same open and spacious atmosphere found in a conventional home. So, go ahead, put your feet up and relax in comfort.



The entertainment center

A good night's rest is assured as you retire in the walk around, queen size bed with matching spread, pillow and window treatments. You'll also appreciate the overhead cabinets and matching night stands that richly accent the bedroom in your Kountry Star® 5th Wheel.



Natural oak doors, drawer fronts and plank flooring enhance the beauty of the kitchen area.

Kountry Star

As breathtaking as the rolling countryside, Kountry Star® 5th Wheels and Travel Trailers are a welcoming addition to this view of Americana. With an equally impressive interior and your personal selections of floor plans and professionally coordinated decor, you'll soon start on an adventure in which the only limits are time and your imagination. Comfort and convenience are paramount in the design of these vehicles with durability built in.



Whether a short trip or a cross country excursion, you'll enjoy the elegant lifestyle associated with a Kountry Star®. With each passing mile, you will discover how much forethought, planning and dedication went into these travel trailers and 5th Wheels by Newmar's talented team of engineers, craftsmen and professional decorator. As you relax in the comforts of the smartly designed interior and look around you, it becomes evident that you made a wise choice.



Many standard appliances are featured in your Kountry Star® kitchen such as a Dometic refrigerator/freezer, overhead

Enjoy a relaxing meal any time of the day or evening while dining in elegance in the attractively designed dining/living room area.



A quiet evening of television or soothing music and a good book are close at hand in your Kountry Star® Travel Trailer entertainment center. The rich,



Cabinets are made on-site with cabinetry skills passed on from one generation to another. Newmar has been building this tradition of time-honored craftsmanship for over 25 years.

Construction Story

You've heard that seeing is believing and after visiting Newmar, you'll become a believer. Scheduled plant tours are available throughout the year presenting you with an excellent opportunity to evaluate the high standard of workmanship that Newmar demands. The plant, located in the heart of Amish Country in northern Indiana combines a successful blend of old fashioned skills with modern manufacturing technology. Take a firsthand look at the care and precision involved in the building process



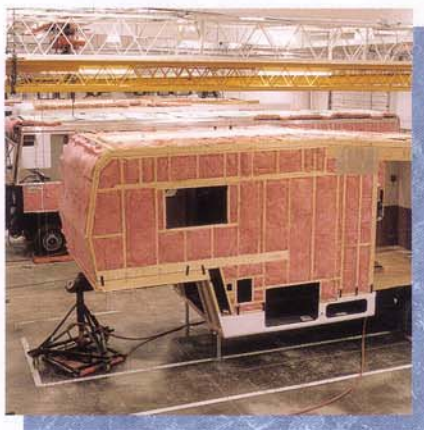
Modern Technology ensures that the latest technological advances are incorporated into each design, maximizing the efficient use of space to provide the highest levels of comfort.



Home is Where the Heart is...but the fun begins wherever you park your American Star or Kountry Star®. You'll delight in all the luxuries of home at a price that will ensure your comfort.



Strong Wooden Framing, standard in American Star and Kountry Star®, maintains its structural integrity for years. Built with 16" on center construction, these units are engineered to last.



A Blanket of rolled insulation is added to the



Aluminum Sidewalls, optional in Kountry Star®, are welded, not riveted, for added strength. The studs are placed 16" on center and insulated foam board and interior panels are both glued and screwed in place.

American Star



The American Star brightly shines above the competition. Sleek and stylish on the outside, American Star maintains elegance and comfort on the inside. It's as if each unit has its own identity, because each one is treated individually to assure that it meets the highest standard of quality that Newmar demands. In addition, each unit is individually tested in Newmar's own rain bay and weighed so that you know the exact gross vehicle weight of your unit. Anything less is unacceptable.



Sit back and relax in total comfort in this beautiful, cozy swivel rocker. Watch the evening news or listen to the stereo while reading a novel.



Floor space instantly expands with the push of a button, giving you additional room to enjoy all the wonderful comforts you'll find in the American Star 5th Wheel lifestyle.

American Star 5th Wheel



Just dessert, or a family meal if you prefer, are easily handled in this kitchen where cupboard space is abundant and everything you need is within reach.

An American Tradition of Excellence

Tradition has been defined as "...an established way of thinking, feeling, or doing...preserved or evolved from the past." That's the philosophy that made American Star Travel Trailers and 5th Wheels what they are today. Time honored craftsmanship and a skilled, experienced work force, direct from the heart of the Amish Community in northern Indiana, strive each day to build every unit with caring pride. Excellence is not a word taken for granted at Newmar. Many quality assurance programs are in place to check and double check the production of

