

# Dutch Star • Kountry Star

1996 Class A • Diesel Pusher



1996 Dutch Star® Diesel Pusher



1996 Kountry Star® Diesel Pusher

*Discover Our Stars.*

# Dutch Star • Kountry Star

1996 Class A • Diesel Pusher



*1996 Dutch Star® Diesel Pusher*



*1996 Kountry Star® Diesel Pusher*

Share in the benefits of joining the Newmar Kountry Klub, a "family" with a network of chapters throughout the United States and Canada.

All you need for eligibility is to be the proud owner of any one of the fine Newmar motorhomes or towables.

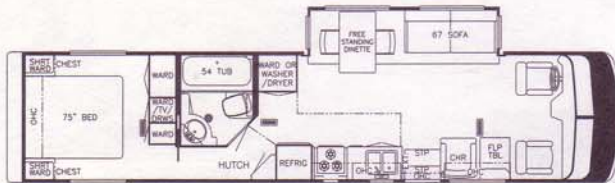
***Newmar Kountry Klub***



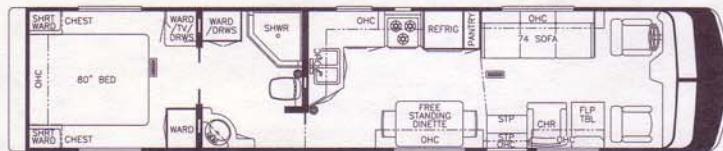
*An American Tradition of Excellence.*

355 N DELAWARE ST  
PO BOX 30

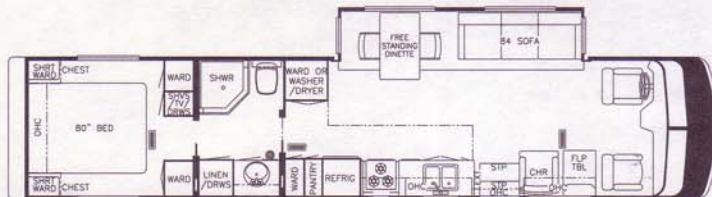




SP3860



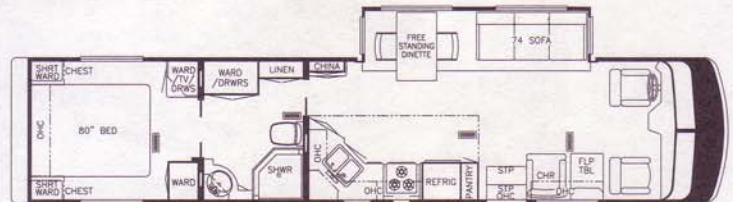
SP4010



SP4055



SP4056



SP4057



SP4060

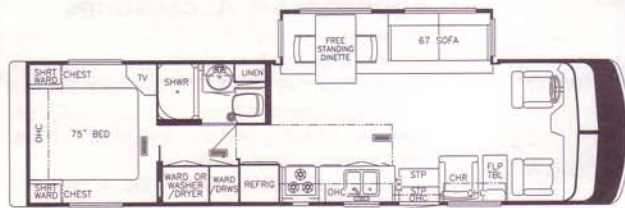
Prices, specifications, and floor plans are subject to change at Newmar's discretion without prior written notice or obligation. Some floor plans may show optional chairs or end tables. See Dealer for availability.

## Kountry Star® Diesel Pusher Spartan Chassis Information

Model	Chassis	Engine	Axle Ratio	Fuel Cap.	Wheel Base	GVWR	GCWR	Unloaded Vehicle Weight
SP3450	SPARTAN	250 HP	4.63	100 GAL	212"	26000	42000	19400
SP3455	SPARTAN	250 HP	4.63	100 GAL	212"	26000	42000	19500
SP3855	SPARTAN	250 HP	4.63	100 GAL	252"	26000	42000	21535
SP3856	SPARTAN	250 HP	4.63	100 GAL	252"	26000	42000	21535
SP3857	SPARTAN	250 HP	4.63	100 GAL	252"	26000	42000	21370
SP3860	SPARTAN	250 HP	4.63	100 GAL	252"	26000	42000	21335
SP4010	SPARTAN	250 HP	4.63	150 GAL	276"	29400	42000	21250
SP4055	SPARTAN	250 HP	4.63	150 GAL	276"	29400	42000	22045
SP4056	SPARTAN	250 HP	4.63	150 GAL	276"	29400	42000	22145
SP4057	SPARTAN	250 HP	4.63	150 GAL	276"	29400	42000	22145



## Kountry Star® Diesel Pusher Floor Plans



SP3450



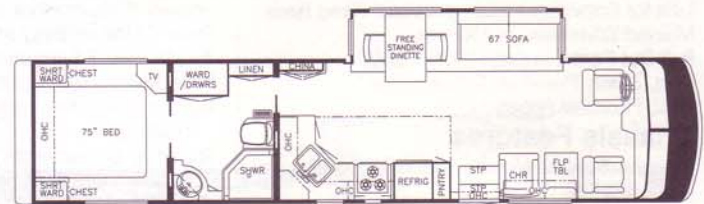
SP3455



SP3855



SP3856



SP3857

### Kountry Star® Diesel Pusher Sizes and Capacities

Model	Length	Exterior Width	Exterior Height	Interior Width	Interior Height	Grey Tank	Sewage Tank	Water Tank	Furnace BTU
SP3450	35' 3"	96"	11' 8"	90-1/2"	78"	55 GAL	55 GAL	105 GAL	35000
SP3455	35' 3"	96"	11' 8"	90-1/2"	78"	55 GAL	55 GAL	105 GAL	35000
SP3855	38' 8"	96"	11' 8"	90-1/2"	78"	55 GAL	55 GAL	105 GAL	40000
SP3856	38' 8"	96"	11' 8"	90-1/2"	78"	55 GAL	55 GAL	105 GAL	40000
SP3857	38' 8"	96"	11' 8"	90-1/2"	78"	55 GAL	55 GAL	105 GAL	40000
SP3860	38' 8"	96"	11' 8"	90-1/2"	78"	55 GAL	55 GAL	105 GAL	40000
SP4010	40' 8"	96"	11' 8"	90-1/2"	78"	55 GAL	55 GAL	105 GAL	40000
SP4055	40' 8"	96"	11' 8"	90-1/2"	78"	55 GAL	55 GAL	105 GAL	40000
SP4056	40' 8"	96"	11' 8"	90-1/2"	78"	55 GAL	55 GAL	105 GAL	40000



# Kountry Star® Diesel Pusher

## 1996 Standard Features

### Air Conditioning & Heating

Air Conditioner, Central Penguin 13.5M BTU w/Heat Strip (1)  
Heat, in Floor Ducted  
LP Gas Tank, 32 Gallons  
LP Leak Detector

### Appliances & Accessories

Carbon Monoxide Detector  
CB Antenna  
Horn (air)  
Microwave Oven/Convection, 30"  
Range Cover, Laminated w/Matching Countertop Material  
Range, Recessed Wedgewood 3-Burner Hot Plate  
Rear View Monitor System  
Refrigerator, Dometic Royale (3862)  
Refrigerator Front, Hardwood Raised Panel  
Stereo, AM/FM Cassette w/Clock  
Telephone Hookup w/Jack (1)  
TV Antenna w/Power Booster & (2) Jacks  
TV, Cable Ready  
TV, 19" Color  
TV Jack for Exterior Use on Door Side  
TV Video Switch  
VCR  
Water Heater, 10 Gallon Gas/Electric, w/Direct Spark Ignition

### Cabinets & Furniture

Cabinetry, Oak Hardwood w/Raised Panel Doors  
Chair, Flexsteel Swivel Barrel  
Drawers w/Metal Guides & Side Rollers  
Front Seats, Flexsteel Swivel/Recline  
Lifts for Convenient Storage Under Fixed Beds  
Molded Silverware Divider Tray  
Pull-Out Pantry (except 3455, 3860)  
Seat, 6-Way Power on Driver's Side  
Sofa, Flexsteel (sleeper)

### Chassis Features

Chassis, Spartan Mountain Master 250HP  
Raised Rail  
Air Brakes w/Auto Slack Adjuster Front & Rear  
Anti-Lock Braking System  
Back-Up Alarm  
Cruise Control  
Dash Heater/Air Conditioner, High Output  
Pack 8 Exhaust Engine Brake  
Recessed Fuel Fill w/Locking Door (1 on each side)  
Steering Wheel, Tilt & Telescope  
Suspension, Self Leveling Air Ride  
Wheels, Polished Aluminum

### Electrical Features

Battery Disconnect (coach & chassis batteries)  
Battery, Thermolite (4-6 volt)  
Converter, 75 AMP w/Charger  
Electrical Service, 50 AMP w/Flexible Cord  
Gen, 7.5 KW Onan (diesel) on Slides  
w/Automatic Changeover  
Lighting, Fluorescent Recessed in Ceiling  
Lights, Docking  
Lights, Driving  
Lights in Exterior Storage Compartments  
Lights in Wardrobes  
Lights, Interior Courtesy

### Exterior Features

Convex Exterior Mirrors w/Remote Control and Defrost  
Exterior Front & Rear, Gel-Coated Fiberglass End Caps  
Exterior Sides, Gel-Coated Fiberglass  
Hitch for Towing Car w/Wire Connector  
Jacks, Hydraulic Leveling w/Automatic Control  
Mud Flaps (front & rear)  
Roof Rack & Ladder  
Roof, Rubber  
Slideout, Large w/Flat Floor  
(see floorplans for availability & layout)  
Undercoating

### Interior Features

Bedsread, Quilted w/Reversed Shams & Accent Pillow  
Ceiling, Woven Soft Touch  
Decorative Wall Clock & Mirror  
Floor Covering, Carpet Staintech, 45 oz. 100% Nylon Plush Saxony  
Floor Covering, Carpet w/High Density Pad  
Floor Covering, Hardwood Plank in Kitchen  
Sink Covers, (2)  
Smoke Detector & 10BC Fire Extinguisher  
Window Treatment, Day/Night Pleated Shades & Lamberquins  
Window Treatment, Mini Blinds (kitchen)

### Plumbing / Bath Features

Bath Accessories, White (2 towel bars, 1 tissue holder & robe hook)  
Monitor Panel  
Sewage Holding Tank Rinse  
Shower, Exterior Hook-Up  
Stool, China w/Spray Attachment  
Tub/Shower, Fiberglass w/Enclosure  
Water Filtering System w/Drink Dispenser (kitchen)  
Water Hose w/Automatic Rewind & City Water Hook-Up  
Winterize Convenience Package  
(w/water heater bypass)

### Construction Features

Floor Decking, Structurewood  
Insulation, Fiberglass R7 Sidewalls & Floor, R11 Roof  
Insulation, Foam 5/8" Laminated in Sidewalls & Ceiling

### Windows, Awnings & Vents

Door Bell  
Door, Driver's Side w/Power Window  
Entrance Door, Stepwell Tread Liner  
Exterior Lighted Acrylic Assist Handle  
(at main entrance door)  
Skylight in Bathroom w/Soft Shade  
Step, 12 Volt Automatic (double)  
Step, Fold-Down in Front Bumper  
Vent, 12 Volt Fantastic w/Rain Sensor in Kitchen  
Vent, 12 Volt in Bath Area w/Wall Switch  
Windows, Radius Safety Glass Dark Tinted

## 1996 Optional Features

### Air Conditioning & Heating

Air Conditioner, Brisk Air 15M BTU w/Heat Strip (extra) ..... 105 lbs.  
Air Conditioner, Brisk Air 15M BTU w/Heat Strip in Place of 13.5M ..... 10 lbs.  
Air Conditioner, Central Penguin 13.5M BTU w/Heat Strip (extra) ..... 105 lbs.

### Appliances & Accessories

CB Radio ..... 2 lbs.  
Cellular Telephone Antenna ..... 1 lbs.  
Freezer, Norcold AC/DC (on slides) in Exterior Storage Compartment ..... 40 lbs.  
Icemaker Added to Dometic Refrigerator ..... 5 lbs.  
Refrigerator, Dometic Side-by-Side (3450, 3856, 3857, 4010, 4055, 4056, 4057, 4060) ..... 75 lbs.  
Security System ..... 2 lbs.  
Washer/Dryer Prep (3450, 3855, 3856, 3857, 3860, 4055, 4056, 4057, 4060) ..... 22 lbs.  
Washer/Dryer, Sears (3450, 3855, 3856, 3857, 3860, 4055, 4056, 4057, 4060) ..... 269 lbs.

### Cabinets & Furniture

Built-In Dinette in Place of Free Standing Table/Chairs ..... 3 lbs.  
Cabinetry, Bleached Oak Hardwood .... 0 lbs.  
Chair, Flexsteel High Back Recliner (cloth) ..... 45 lbs.  
Chair, Flexsteel High Back Recliner Leather/Vinyl ..... 75 lbs.  
Chair, Flexsteel Large Recliner w/Non-Sleeper Sofa (cloth) (except 4010)  
Corian Countertop Bath & Kitchen (w/recessed kitchen sink) ..... 15 lbs.  
Dinette Chairs Fixed, Two Extra ..... 20 lbs.  
Front Seats, Flexsteel Leather/Vinyl w/Power Lumbar Support ..... 39 lbs.

### Chassis Features

Chassis, Spartan Mountain Master 300HP  
Raised Rail

### Electrical Features

Inverter/Converter, Heart Freedom 20 ..... 25 lbs.  
Light Exterior Security (each) ..... 1 lbs.  
Light Spot w/Remote Control ..... 3 lbs.

### Exterior Features

Roof & Radius Top Wrap, Gel-Coated Fiberglass (per foot) ..... 10 lbs.

### Interior Features

Floor Covering, Ceramic Tile in Bath Area ..... 75 lbs.  
State Seal ..... 0 lbs.

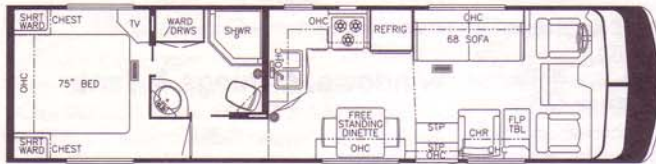
### Windows, Awnings & Vents

Awning, Side A & E 9000 ..... 127 lbs.  
Awning, Side Tension Rafter ..... 5 lbs.  
Awning Slideout Cover ..... 25 lbs.  
Awning, Window A & E 9000 (per window) ..... 5 lbs.  
Windows, Thermopane in Place of Standard ..... 400 lbs.

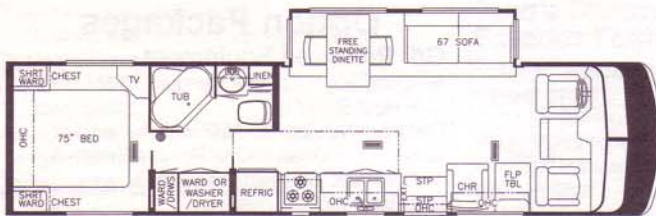




SA3255



SA3410



SA3450



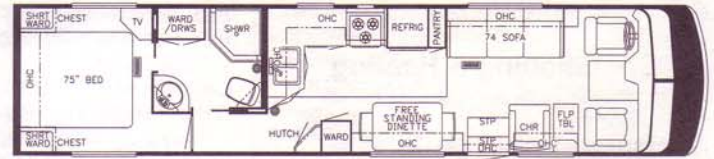
SA3451



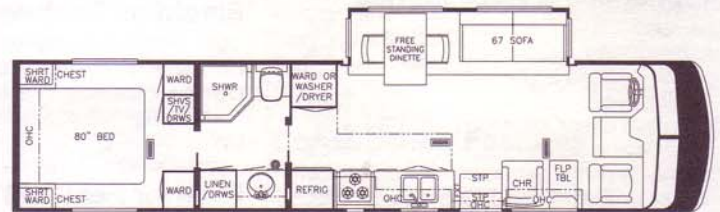
SA3455



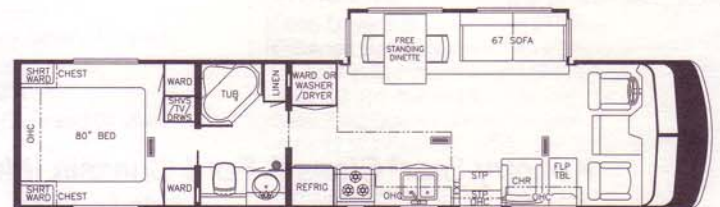
## Kountry Star® Class A Floor Plans



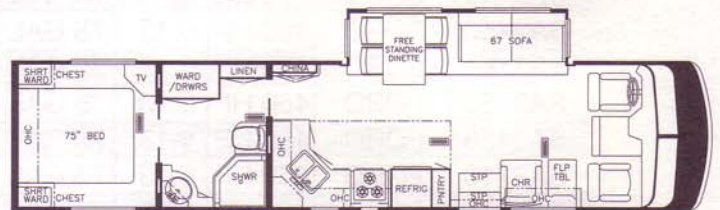
SA3710



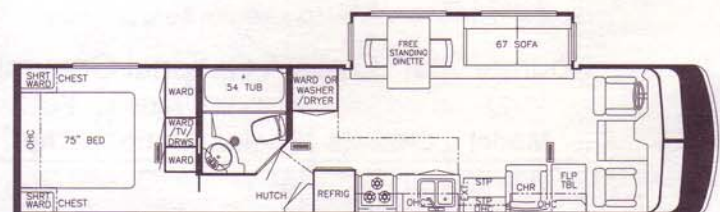
SA3755



SA3756



SA3757



SA3760



## 1996 Optional Features

### Option Packages

G6 Preferred Equipment ..... 513 lbs.

### Air Conditioning & Heating

Air Conditioner, Brisk Air 15M BTU w/Heat Strip (extra) ..... 105 lbs.  
Air Conditioner, Brisk Air 15M BTU w/Heat Strip in Place of 13.5M ..... 10 lbs.  
Air Conditioner, Central Penguin 13.5M BTU w/Heat Strip (extra) ..... 105 lbs.

### Appliances & Accessories

CB Radio ..... 2 lbs.  
Horn (trumpet) ..... 2 lbs.  
Icemaker Added to Dometic Refrigerator ..... 5 lbs.  
Microwave Oven/Convection, 30" w/3-Burner Hot Plate ..... 75 lbs.  
Security System ..... 2 lbs.  
TV Jack for Exterior Use on Door Side .... 1 lbs.  
Washer/Dryer Prep (3450, 3451, 3455, 3755, 3756, 3757, 3760) ..... 22 lbs.  
Washer/Dryer, Sears (3450, 3451, 3455, 3755, 3756, 3757, 3760) ..... 269 lbs.

### Cabinets & Furniture

Bed, Twins (except 3255, 3458) ..... 50 lbs.  
Built-in Dinette in Place of Free Standing Table/Chairs ..... 3 lbs.  
Cabinetry, Bleached Oak Hardwood .... 0 lbs.  
Chair, Flexsteel High Back Recliner (cloth) ..... 45 lbs.  
Chair, Flexsteel Large Recliner w/Non-Sleeper Sofa (cloth) (except 3410, 3710) ..... 20 lbs.  
Dinette Chairs, Fixed (Two Extra) ..... 20 lbs.  
Seat, 6-Way Power on Driver's Side .... 77 lbs.

### Electrical Features

Light, Exterior Security (each) ..... 1 lbs.  
Light Spot w/Remote Control ..... 3 lbs.  
Lighting, Fluorescent Recessed in Ceiling ..... 1 lbs.  
Lights, Docking ..... 4 lbs.  
Lights, Driving ..... 2 lbs.

### Exterior Features

Roof & Radius, Top Wrap Gel-Coated Fiberglass (per foot) ..... 10 lbs.

### Interior Features

State Seal ..... 0 lbs.

### Plumbing / Bath Features

Heat Pads for Holding Tanks, 110 Volt .... 2 lbs.  
Sewage Holding Tank Rinse ..... 1 lbs.  
Sewage Hose Holder (easy access flop down tray) ..... 1 lbs.  
Shower Exterior Hook-Up ..... 2 lbs.  
Stool, China w/Spray Attachment ..... 7 lbs.  
Water Filter System w/Drink Dispenser (kitchen) ..... 5 lbs.

### Windows, Awnings & Vents

Awning, Side A & E 9000 ..... 127 lbs.  
Awning, Side Tension Rafter ..... 5 lbs.  
Awning, Slideout Cover ..... 25 lbs.  
Awning, Window A & E 9000 (per window) ..... 5 lbs.  
Door Bell ..... 2 lbs.

### Option Packages

#### G6 Preferred Equipment

Air Conditioner, Central Penguin 13.5M BTU w/Heat Strip (1)  
Electrical Service, 50 AMP w/Flexible Cord  
Gen 6.5 KW Onan w/One Remote Switch & Automatic Changeover  
Rear View Monitor System  
Jacks, Hydraulic Leveling w/"Touch" Manual Control

### Kountry Star® Class A Ford Chassis Information

Model	Chassis	Engine	Axle Ratio	Fuel Cap.	Wheel Base	GVWR	GCWR	Unloaded Vehicle Weight
SA3255	FORD	460 HP	5.13	75 GAL	200	17000	25000	13600
SA3410	FORD	460 HP	5.13	75 GAL	178+TAG	20000	25000	15125
SA3450	FORD	460 HP	5.13	75 GAL	178+TAG	20000	25000	16045
SA3451	FORD	460 HP	5.13	75 GAL	178+TAG	20000	25000	16045
SA3455	FORD	460 HP	5.13	75 GAL	178+TAG	20000	25000	15750
SA3458	FORD	460 HP	5.13	75 GAL	178+TAG	20000	25000	15795
SA3710	FORD	460 HP	5.13	75 GAL	200+TAG	20000	25000	15645
SA3755	FORD	460 HP	5.13	75 GAL	200+TAG	20000	25000	16748
SA3756	FORD	460 HP	5.13	75 GAL	200+TAG	20000	25000	16500
SA3757	FORD	460 HP	5.13	75 GAL	200+TAG	20000	25000	16685
SA3760	FORD	460 HP	5.13	75 GAL	200+TAG	20000	25000	16610

Lengths, Heights, Widths and Dry Weights are approximate.

### Kountry Star® Class A Optional Chevrolet Chassis Information

Model	Chassis	Engine	Axle Ratio	Fuel Cap.	Wheel Base	GVWR	GCWR	Unloaded Vehicle Weight
SA3255	CHEVY	454 HP	4.63	80 GAL	200	16500	20000	13100
SA3410	CHEVY	454 HP	4.63	80 GAL	178+TAG	18500	20000	14625
SA3450	CHEVY	454 HP	4.63	80 GAL	178+TAG	18500	20000	15545
SA3451	CHEVY	454 HP	4.63	80 GAL	178+TAG	18500	20000	15545



# Kountry Star® Class A

## 1996 Standard Features

### Air Conditioning & Heating

Air Conditioner Prep (110 volt wiring)  
Heat, in Floor Ducted  
LP Gas Tank, 32 Gallons  
LP Leak Detector

### Appliances & Accessories

Carbon Monoxide Detector  
CB Antenna  
Microwave Oven, 22"  
Range Cover, Laminated w/Matching  
Countertop Material  
Range Hood w/Light & Fan  
Range, Recessed Wedgewood 3-Burner w/  
Black Glass Oven Door  
Refrigerator, Dometic Royale (3862)  
Refrigerator Front, Hardwood Raised Panel  
Stereo, AM/FM Cassette w/Clock  
Telephone Hookup w/Jack (1)  
TV Antenna w/Power Booster (2) & Jacks  
TV, Cable Ready  
TV, Color 19"  
TV Video Switch  
Water Heater, 6 Gallon Gas/Electric w/Direct  
Spark Ignition

### Cabinets & Furniture

Cabinetry, Oak Hardwood w/Raised Panel Doors  
Chair, Flexsteel Swivel Barrel  
Drawers w/Metal Guides & Side Rollers  
Front Seats, Flexsteel Swivel/Recline  
Lifts for Convenient Storage Under Fixed Beds  
Molded Silverware Divider Tray  
Sofa, Flexsteel (sleeper)

### Chassis Features

Chassis, Ford (460 CID engine) w/Radial Tires  
Cruise Control

### Chassis Features (continued)

Dash Heater/Air Conditioner, High Output  
Recessed Fuel Fill w/Locking Door  
Spare Tire  
Steering Wheel Tilt  
Suspension, Granning Tag Axle (except 3255)  
Wheel Simulators, Stainless Steel

### Electrical Features

Battery Disconnect (coach battery w/one switch)  
Battery, Thermoil (2-12 volt)  
Converter, 75 AMP w/Charger  
Electrical Service, 30 AMP  
Gen Prep (automatic changeover, 110 volt  
wire & remote start wire)  
Lights in Wardrobes  
Recepts, 110 Volt w/Ground Fault Interrupter  
(interior & exterior)  
Switch for Emergency Chassis Engine Start

### Exterior Features

Convex Exterior Mirrors w/Remote Control  
Exterior Front & Rear, Gel-Coated Fiberglass  
Hitch for Towing Car w/Wire Connector  
Mud Flaps (front & rear)  
Roof Rack & Ladder  
Roof, Rubber  
Slideout, Large w/Flat Floor  
(see floorplans for availability & layout)  
Undercoating

### Interior Features

Bedsprad, Quilted w/Reversed Shams &  
Accent Pillow  
Ceiling, Woven Soft Touch  
Decorative Wall Clock & Mirror  
Floor Covering, Carpet Staintech, 45 oz. 100%  
Nylon Plush Saxony

### Interior Features (continued)

Floor Covering, Carpet w/High Density Pad  
Floor Covering, Hardwood Plank in Kitchen Area  
Sink Covers, (2)  
Smoke Detector & 5BC Fire Extinguisher  
Window Treatment, Day/Night Pleated Shades  
& Lamberquins  
Window Treatment, Mini Blinds (kitchen)

### Plumbing / Bath Features

Bath Accessories, White (2 towel bars,  
1 tissue holder & robe hook)  
Monitor Panel  
Stool, Aqua Magic IV  
Tub/Shower, Fiberglass w/Enclosure  
Winterize Convenience Package (w/water  
heater bypass)

### Construction Features

Floor Decking, Structurewood  
Insulation, Fiberglass R7 Sidewalls & Floor,  
R11 Roof  
Insulation Foam, 5/8" Laminated in Sidewalls &  
Ceiling

Rear Bumper w/Slideout Tray for Spare Tire  
Structure, Aluminum Sidewalls & Roof

### Windows, Awnings & Vents

Door, Driver's Side w/Power Window  
Entrance Door, Stepwell Tread Liner  
Skylight in Bathroom w/Soft Shade  
Step, 12 Volt Automatic (double)  
Step, Fold Down in Front Bumper  
Vent, 12 Volt Fantastic w/Rain Sensor in Kitchen  
Vent, 12 Volt in Bath Area w/Wall Switch  
Windows, Radius Safety Glass Dark Tinted

## Kountry Star® Class A Sizes and Capacities

Model	Length	Exterior		Interior		Grey Tank	Sewage Tank	Water Tank	Furnace BTU
		Width	Height	Width	Height				
SA3255	32' 10"	96"	11' 8"	90-1/2"	78"	50 GAL	50 GAL	56 GAL	35000
SA3410	34' 10"	96"	11' 8"	90-1/2"	78"	50 GAL	50 GAL	56 GAL	35000
SA3450	34' 10"	96"	11' 8"	90-1/2"	78"	50 GAL	50 GAL	56 GAL	35000
SA3451	34' 10"	96"	11' 8"	90-1/2"	78"	50 GAL	50 GAL	56 GAL	35000
SA3455	34' 10"	96"	11' 8"	90-1/2"	78"	50 GAL	50 GAL	56 GAL	35000
SA3458	34' 10"	96"	11' 8"	90-1/2"	78"	50 GAL	50 GAL	56 GAL	35000
SA3710	37' 11"	96"	11' 8"	90-1/2"	78"	50 GAL	50 GAL	56 GAL	40000
SA3755	37' 11"	96"	11' 8"	90-1/2"	78"	50 GAL	50 GAL	56 GAL	40000
SA3756	37' 11"	96"	11' 8"	90-1/2"	78"	50 GAL	50 GAL	56 GAL	40000



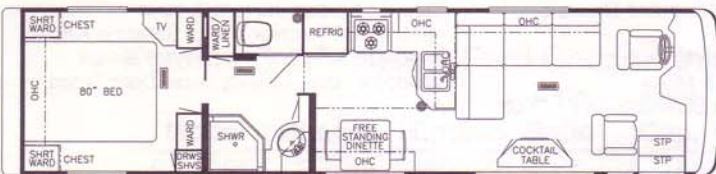
## Dutch Star® Diesel Pusher Floor Plans



DP3450



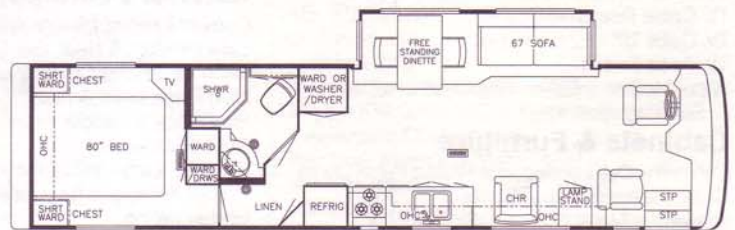
DP3455



DP3730



DP3757



DP3762

Prices, specifications and floor plans are subject to change at Newmar's discretion without prior written notice or obligation. Some floor plans may show optional chairs or end tables. See Dealer for availability.

### Dutch Star® Diesel Pusher Chassis Information

Model	Chassis	Engine	Axle Ratio	Fuel Cap.	Wheel Base	GVWR	GCWR	Unloaded Vehicle Weight
DP3450	SPARTAN	230 HP	4.63	100 GAL	212"	23000	40000	19100
DP3455	SPARTAN	230 HP	4.63	100 GAL	212"	23000	40000	19200
DP3730	SPARTAN	250 HP	4.63	100 GAL	240"	26000	42000	19600
DP3757	SPARTAN	250 HP	4.63	100 GAL	240"	26000	42000	20400
DP3762	SPARTAN	250 HP	4.63	100 GAL	240"	26000	42000	20400

Lengths, Heights, Widths and Dry Weights are approximate.

### Dutch Star® Diesel Pusher Sizes and Capacities

Model	Length	Exterior Width	Exterior Height	Interior Width	Interior Height	Grey Tank	Sewage Tank	Water Tank	Furnace BTU
DP3450	34' 6"	101"	11' 8"	95-1/2"	78"	55 GAL	55 GAL	105 GAL	35000
DP3455	34' 6"	101"	11' 8"	95-1/2"	78"	55 GAL	55 GAL	105 GAL	35000
DP3730	37' 0"	101"	11' 8"	95-1/2"	78"	55 GAL	55 GAL	105 GAL	35000
DP3757	37' 0"	101"	11' 8"	95-1/2"	78"	55 GAL	55 GAL	105 GAL	35000
DP3762	37' 0"	101"	11' 8"	95-1/2"	78"	55 GAL	55 GAL	105 GAL	35000



# Dutch Star® Diesel Pusher

## 1996 Standard Features

### Air Conditioning & Heating

Air Conditioner, Central Penguin 13.5M BTU w/Heat Strip (1)  
Heat, in Floor Ducted  
LP Gas Tank, 32 Gallons  
LP Leak Detector

### Appliances & Accessories

Carbon Monoxide Detector  
CB Antenna  
Microwave Oven, 22"  
Range Cover  
Range Hood w/Light & Fan  
Range, Wedgewood 3-Burner w/Black Glass Oven Door  
Rear View Monitor System  
Refrigerator, Dometic Americana Double Door (2852)  
Refrigerator Front, Hardwood Raised Panel  
Stereo, AM/FM Cassette w/Clock  
TV Antenna w/Power Booster & 2 Jacks  
TV, Cable Ready  
TV, Color 19"  
Water Heater, 10 Gallon Gas/Electric w/Direct Spark Ignition

### Cabinets & Furniture

Cabinetry, Oak w/Raised Panel Doors  
Chair, Flexsteel Swivel Barrel  
Front Seats, Flexsteel Swivel/Recline  
Lifts for Convenient Storage Under Fixed Beds  
Molded Silverware Divider Tray  
Sofa, Flexsteel (sleeper)

### Chassis Features

Chassis, Spartan Alpine 230HP Raised Rail (3450, 3455)

### Chassis Features (continued)

Chassis, Spartan IC 250HP Raised Rail (3730, 3757, 3762)  
Air Brakes w/Auto Slack Adjuster Front & Rear  
Back-Up Alarm  
Cruise Control  
Dash Heater/Air Conditioner, High Output  
Recessed Fuel Fill w/Locking Door (1 on each side)  
Steering Wheel, Tilt & Telescope  
Wheel Simulators, Stainless Steel

### Electrical Features

Battery Disconnect (coach battery w/one switch)  
Battery, Thermoil (2-12 volt)  
Converter, 75 AMP w/Charger  
Electrical Service, 50 AMP w/Flexible Cord  
Gen, 6.5 KW Onan w/LP Conversion & Automatic Changeover  
Lights in Exterior Storage Compartments  
Recepts, 110 Volt w/Ground Fault Interrupter (interior & exterior)  
Switch for Emergency Chassis Engine Start

### Exterior Features

Convex Exterior Mirrors (driver-side mount, passenger-front mount)  
Exterior Front & Rear, Gel-Coated Fiberglass End Caps  
Exterior Sides, Gel-Coated Fiberglass  
Hitch for Towing Car w/Wire Connector  
Jacks, Hydraulic Leveling w/Joystick Controller  
Mud Flaps (front & rear)  
Roof Rack & Ladder  
Roof, Rubber  
Slideout, Large (see floorplans for availability & layout)  
Undercoating

### Interior Features

Bedspread, Quilted w/Reversed Shams (1)  
Decorative Wall Clock & Mirror  
Floor Covering, Carpet w/High Density Pad  
Sink Cover, (1)  
Smoke Detector & 5BC Fire Extinguisher  
Window Treatment, Day/Night Pleated Shades & Lamberquins  
Window Treatment, Mini Blinds (kitchen & bath)

### Plumbing / Bath Features

Bath Accessories, White (2 towel bars, 1 tissue holder)  
Monitor Panel  
Stool, Aqua Magic IV  
Tub/Shower Surround w/Enclosure  
Winterize Convenience Package (w/water heater bypass)

### Construction Features

Floor Decking, Structurewood  
Insulation Fiberglass R7 Sidewalls & Floor, R11 Roof  
Insulation Foam, 5/8" Laminated in Sidewalls & Ceiling  
Structure, Aluminum Sidewalls & Roof  
Structure, Widebody 100" w/Bus Style Front End

### Windows, Awnings & Vents

Entrance Door, Stepwell Tread Liner  
Skylight in Bathroom w/Soft Shade  
Step, 12 Volt Automatic (double)  
Vent, 12 Volt in Bath Area w/Wall Switch  
Windows, Radius Safety Glass Dark Tinted

## 1996 Optional Features

### Air Conditioning & Heating

Air Conditioner, Brisk Air 15M BTU w/Heat Strip in Place of 13.5M ..... 10 lbs.  
Air Conditioner, Central Penguin 13.5M BTU w/Heat Strip (extra) ..... 105 lbs.

### Appliances & Accessories

CB Radio ..... 2 lbs.  
Horn (air) ..... 5 lbs.  
Icemaker Added To Dometic Refrigerator Royale (3862) ..... 5 lbs.  
Microwave Oven/Convection, 22" w/3-Burner Hot Plate ..... 40 lbs.  
TV Jack for Exterior Use on Door Side ..... 1 lbs.  
Washer/Dryer Prep (3757, 3762) ..... 22 lbs.  
Washer/Dryer, Sears (3757, 3762) ... 269 lbs.

### Cabinets & Furniture

Built-In Dinette in Place of Free Standing Table/Chairs ..... 3 lbs.  
Cabinetry, Bleached Oak Hardwood . 25 lbs.  
Chair, Flexsteel High Back Recliner (cloth) ..... 45 lbs.  
Dinette Chairs Fixed, Two Extra ..... 20 lbs.  
Seat, 6-way Power on Driver's Side ... 77 lbs.

### Electrical Features(continued)

Lighting, Fluorescent Recessed in Ceiling ..... 1 lbs.  
Lights, Docking ..... 4 lbs.  
Lights, Driving ..... 2 lbs.

### Exterior Features

Convex Exterior Mirrors w/Remote Control & Defrost, Front Mounted ..... 2 lbs.  
Jacks, Hydraulic Leveling w/"Touch" Manual Control

### Interior Features

Ceiling, Woven Soft Touch ..... 50 lbs.  
Center Entrance Door Layout (except 3730)  
Floor Covering, Hardwood Plank in Kitchen Area ..... 30 lbs.  
Floor Covering, Vinyl in Kitchen ..... 20 lbs.  
State Seal ..... 0 lbs.

### Plumbing / Bath Features

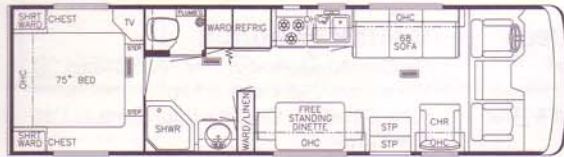
Sewage Holding Tank Rinse ..... 1 lbs.  
Shower, Exterior Hook-Up ..... 2 lbs.  
Tub/Shower, Fiberglass ..... 75 lbs.  
Water Filtering System w/Drink Dispenser (kitchen) ..... 5 lbs.

### Windows, Awnings & Vents

Awning, Side A & E 8500 ..... 83 lbs.  
Awning, Side Tension Rafter ..... 5 lbs.  
Awning Slideout Cover ..... 25 lbs.  
Door, Driver's Side w/Power Window . 50 lbs.  
Exterior Lighted Acrylic Assist Handle (at main entrance door) ..... 1 lbs.  
Vent, 12 Volt Fantastic w/Rain Sensor in Kitchen ..... 11 lbs.



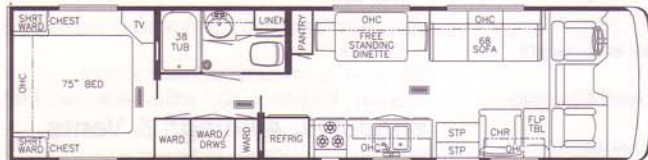
## Dutch Star® Class A Floor Plans



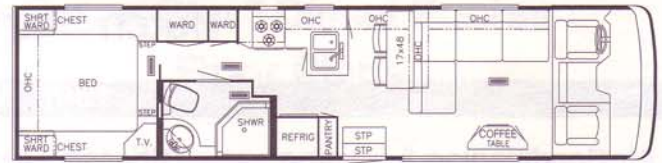
DA3106



DA3255



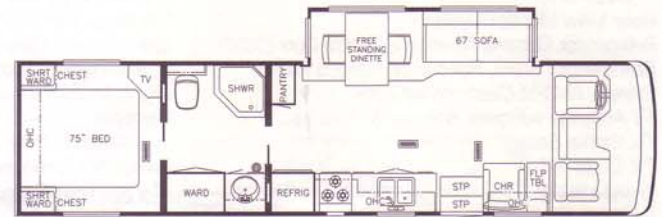
DA3401



DA3412



DA3450



DA3455



DA3658

Prices, specifications, and floor plans are subject to change at Newmar's discretion without prior written notice or obligation. Some floor plans may show optional chairs or end tables. See Dealer for availability.

### Dutch Star® Class A Chevrolet Chassis Information

Model	Chassis	Engine	Axle Ratio	Fuel Cap.	Wheel Base	GVWR	GCWR	Unloaded Vehicle Weight
DA3106	CHEVY	454 HP	4.63	80 GAL	200	16500	20000	12055
DA3255	CHEVY	454 HP	4.63	80 GAL	203	16500	20000	13105
DA3401	CHEVY	454 HP	4.63	80 GAL	208	16500	20000	13100
DA3412	CHEVY	454 HP	4.63	80 GAL	208	16500	20000	13100
DA3450	CHEVY	454 HP	4.63	80 GAL	208	16500	20000	13702
DA3455	CHEVY	454 HP	4.63	80 GAL	208	16500	20000	13634
DA3658	CHEVY	454 HP	4.63	80 GAL	214+TAG	18500	20000	14880

Lengths, Heights, Widths and Dry Weights are approximate.

### Dutch Star® Class A Sizes and Capacities

Model	Length	Exterior Width	Exterior Height	Interior Width	Interior Height	Grey Tank	Sewage Tank	Water Tank	Furnace BTU
DA3106	31' 11"	96"	11' 5"	90-1/2"	78"	40 GAL	40 GAL	45 GAL	30000
DA3255	32' 11"	96"	11' 5"	90-1/2"	78"	40 GAL	40 GAL	45 GAL	30000
DA3401	34' 11"	96"	11' 5"	90-1/2"	78"	40 GAL	40 GAL	45 GAL	35000
DA3412	34' 11"	96"	11' 5"	90-1/2"	78"	40 GAL	40 GAL	45 GAL	35000



## Dutch Star® Class A

### 1996 Standard Features

#### Air Conditioning & Heating

Air Conditioner Prep (110 volt wiring)  
Heat, in Floor Ducted  
LP Gas Tank, 25 Gallons  
LP Leak Detector

#### Appliances & Accessories

Carbon Monoxide Detector  
CB Antenna  
Microwave Oven, 22"  
Range Hood w/Light & Fan  
Range, Wedgewood, 3-Burner w/Black Glass  
Oven Door  
Refrigerator, Dometic Americana Double Door (2852)  
Refrigerator Front, Hardwood Raised Panel  
Stereo, AM/FM Cassette w/Clock  
TV Antenna w/Power Booster & 2 Jacks  
TV, Cable Ready  
TV, Color 19"  
Water Heater, 6 Gallon Gas w/Direct Spark Ignition

#### Cabinets & Furniture

Cabinetry, Oak w/Raised Panel Doors  
Chair, Flexsteel Swivel Barrel  
Front Seats, Flexsteel Swivel/Recline  
Lifts for Convenient Storage Under Fixed Beds  
Molded Silverware Divider Tray  
Sofa, Flexsteel (sleeper)

#### Chassis Features

Chassis, Chevy (454 CID engine) w/Radial Tires  
Cruise Control  
Dash Heater/Air Conditioner, High Output  
Spare Tire  
Steering Wheel Tilt  
Suspension, Granning Tag Axle (3658)  
Wheel Simulators, Stainless Steel

#### Electrical Features

Battery, Thermoil (2-12 volt)  
Converter, 40 AMP w/Charger  
Electrical Service, 30 AMP  
Gen Prep (110 volt wire, remote start wire)  
Lights in Exterior Storage Compartments  
Switch for Emergency Chassis Engine Start

#### Exterior Features

Convex Exterior Mirrors (driver-side mount,  
passenger-front mount)  
Exterior, Front & Rear Gel-Coated  
Fiberglass End Caps  
Exterior Sides, Gel-Coated Fiberglass  
Hitch for Towing Car w/Wire Connector  
Mud Flaps (front & rear)  
Roof Rack & Ladder  
Roof, Rubber  
Slideout, Large (see floorplans for availability  
& layout)  
Undercoating

#### Interior Features

Bedsprad, Quilted w/Reversed Shams (1)  
Decorative Wall Clock & Mirror  
Floor Covering, Carpet w/High Density Pad  
Sink Cover, (1)  
Window Treatment, Mini Blinds (throughout)

#### Plumbing / Bath Features

Bath Accessories, White  
(2 towel bars, 1 tissue holder)  
Monitor Panel  
Stool, Aqua Magic IV  
Tub/Shower Surround w/Enclosure  
Winterize Convenience Package  
(w/water heater bypass)

#### Construction Features

Floor Decking, Structurewood  
Insulation, Fiberglass R7 Sidewalls, Floor & Roof  
Insulation, Foam 5/8" Laminated in Sidewalls &  
Ceiling

Structure, Aluminum Sidewalls & Roof

#### Windows, Awnings & Vents

Entrance Door Stepwell Tread Liner  
Skylight in Bathroom w/Soft Shade  
Step, 12 Volt Automatic (single)  
Vent, 12 Volt in Bath Area w/Wall Switch  
Windows, Radius Safety Glass Dark Tinted

### 1996 Optional Features

#### Option Packages

E6 Single Air Preferred Equipment ..... 420 lbs.  
T6 Preferred Equipment ..... 546 lbs.

#### Appliances & Accessories

CB Radio ..... 2 lbs.  
Horn (trumpet) ..... 2 lbs.  
Icemaker Added to Dometic Refrigerator  
Royale (3862) ..... 5 lbs.  
Microwave Oven/Convection, 22"  
w/3-Burner Hot Plate ..... 40 lbs.  
Rear View Monitor System ..... 4 lbs.  
Telephone Hookup w/Jack (1) ..... 1 lbs.  
TV Jack for Exterior Use on Door Side ..... 1 lbs.  
Washer/Dryer Prep (3401, 3358) ..... 2 lbs.  
Washer/Dryer, Sears (3401, 3658) .... 269 lbs.

#### Cabinets & Furniture

Bed, Twins ..... 50 lbs.  
Built-In Dinette in Place of Free Standing  
Table/Chairs ..... 3 lbs.  
Cabinetry, Bleached Oak Hardwood .. 25 lbs.  
Chair, Flexsteel High Back Recliner (cloth) .. 45 lbs.  
Countertop Extension (except 3106) .... 7 lbs.  
Dinette Chairs Fixed, Two Extra ..... 20 lbs.  
Seat, 6-Way Power on Driver's Side .... 77 lbs.  
Sofa, Flexsteel 68" Hide-A-Bed  
(except 3106, 3401, 3412) ..... 75 lbs.

#### Chassis Features

Chassis, Ford (460 CID engine)  
w/Radial Tires ..... 500 lbs.

#### Electrical Features

Battery Disconnect  
(coach battery w/1 switch) ..... 2 lbs.  
Light, Exterior Security (each) ..... 1 lbs.  
Light, Spot w/Remote Control ..... 3 lbs.  
Lights, Driving ..... 2 lbs.

#### Exterior Features

Convex Exterior Mirrors w/Remote Control  
& Defrost, Front Mounted ..... 2 lbs.  
Jacks, Electric Leveling ..... 80 lbs.  
Jacks, Hydraulic Leveling w/"Touch"  
Manual Control ..... 80 lbs.  
Jacks, Hydraulic Leveling w/Joystick  
Controller ..... 80 lbs.

#### Interior Features

Floor Covering, Hardwood Plank  
in Kitchen Area ..... 30 lbs.  
Floor Covering, Vinyl  
in Kitchen Area ..... 20 lbs.  
State Seal ..... 0 lbs.

#### Plumbing / Bath Features

Sewage, Holding Tank Rinse ..... 1 lbs.  
Sewage Hose Holder  
(easy access flop down tray) ..... 1 lbs.

#### Windows, Awnings & Vents

Awning, Side A & E 8500 ..... 83 lbs.  
Awning, Side Tension Rafter ..... 5 lbs.  
Awning, Slideout Cover ..... 25 lbs.  
Door, Driver's Side w/Power Window .. 50 lbs.  
Vent, 12 Volt Fantastic w/Rain Sensor  
in Kitchen ..... 11 lbs.

#### E6 Single Air Preferred Equipment

Generator 4.0 KW Onan w/One Remote Switch  
Converter, 75 AMP w/Charger  
Air Conditioner, Brisk Air 15M BTU w/Heat Strip

#### T6 Preferred Equipment

Electrical Service, 50 AMP w/Flexible Cord  
Converter, 75 AMP w/Charger  
Air Conditioner, Central Penguin 13.5M BTU  
w/Heat Strip (2)  
Generator, 5.0 KW Onan w/One Remote, Switch

### Dutch Star® Class A Optional Ford Chassis Information

Model	Chassis	Engine	Axle Ratio	Fuel Cap.	Wheel Base	GVWR	GCWR	Unloaded Vehicle Weight
DA3106	FORD	460 HP	5.13	75 GAL	200	17000	25000	12555
DA3255	FORD	460 HP	5.13	75 GAL	203	17000	25000	13605
DA3401	FORD	460 HP	5.13	75 GAL	208	17000	25000	13600
DA3412	FORD	460 HP	5.13	75 GAL	208	17000	25000	13600
DA3450	FORD	460 HP	5.13	75 GAL	208	17000	25000	14202



# Dutch Star • Kountry Star

1996 [Class A • Diesel Pusher



1996 Dutch Star®

## Specifications



1996 Kountry Star®

*Discover Our Stars.*



# Dutch Star • Kountry Star

## 1996 Class A • Diesel Pusher



1996 Dutch Star® Class A



1996 Kountry Star® Class A

Some features shown in our literature may be optional. Colors and finishes are photographic representations and may appear differently when viewing actual materials. Please see your dealer for actual samples and specifications.

Compliments of:

*Uncompromising work standards are only a part of what Newmar's world-class quality is all about. Professionals working together to produce distinctive, dependable and durable products that will serve you for many years. Our aim is to maintain the highest standards in quality and customer service.*

*We invite you to visit our new, built in 1995, state-of-the-art production facility in Nappanee, Indiana. Tours are offered weekdays at 10:00 A.M. and 2:00 P.M. E.S.T.*

Mahlon Miller  
Chairman of the Board

Don't forget to check out the Klub - the Newmar Kountry Klub, that is. All you need to be eligible is to be the proud owner of any one of the fine Newmar recreational vehicles.

**[Newmar Kountry Klub]**



An American Tradition of Excellence.





*Beautiful light fixtures and pleated shades add to the spacious charm of the living room slideout. Coordinated sleeper sofa and chairs add warmth to ensure a relaxing experience.*



*Sink into pure comfort in this optional recliner by Flexsteel. It's one of many special touches that makes the Kountry Star® stand out far above the competition.*

*Optional leather driver and passenger seats by Flexsteel swivel to become part of the living room. The wraparound dash features large, easy to read gauges and controls that are easy to reach.*





## 1996 • Kountry Star Class A • Diesel Pusher



The stars are out and you'll find Newmar's Kountry Star® Class A and Diesel Pusher motorhomes as bold and bright as ever. Be assured that whichever you choose, Newmar's exacting demands in quality performance are brilliantly evident. Reach for a star, and find out for yourself how old world craftsmanship blended with today's technology combine to create a Kountry Star® motorhome that is out of this world.



1996 Kountry Star® Diesel Pusher





*A hearty country breakfast or a candlelight dinner are easy and fun at your private table in the Dutch Star®. A large, tinted window with pleated shades, enhances the area with its unique view.*



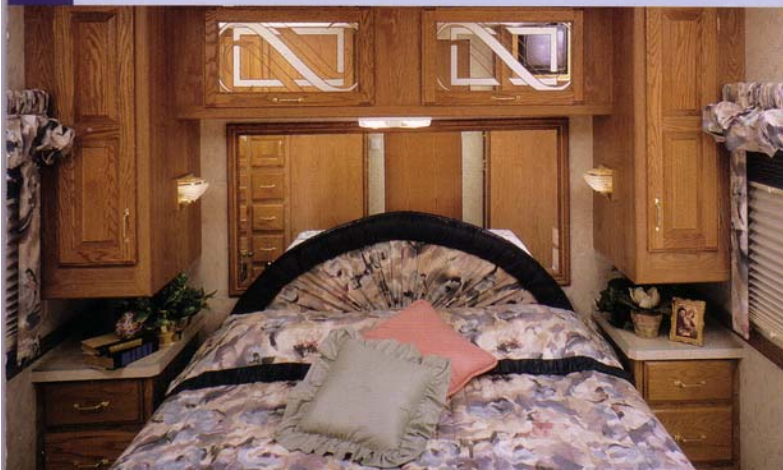


## 1996 • Dutch Star Class A • Diesel Pusher



Just as you expect the stars to continue to shine, Dutch Star® motorhomes continue to build their reputation for dependability. The slide-out rooms, for example, will come to life at the simple push of a button, quietly slipping into place. Newmar pioneered this technology. They precisioned it. They perfected it. You can depend on it.

There's more to a Dutch Star® motorhome than the old-world craftsmanship, the custom-made cabinetry and the precision engineered design. There's a *feeling*. A feeling only you can experience by taking your first step into a Dutch Star® motorhome.



*Large, tinted windows with pleated shades, in the Diesel Pusher, provide spectacular views of your surroundings from this L-shaped sectional sofa.*

