

Mountain Aire • Kountry Aire

Class A • Diesel Pusher by Newmar



1996 Mountain Aire®



1996



1996 Kountry Aire®

Kountry Aire® Class A

1996 Kountry Aire® Class A Chevy Chassis Information

Model	Chassis	Engine	Axle Ratio	Fuel Cap.	Wheel Base	GVWR	GCWR	Unloaded Vehicle Weight
KA3410	CHEVY	454 HP	4.63	80 GAL	178+TAG	18500	20000	15075
KA3450	CHEVY	454HP	4.63	80 GAL	178+TAG	18500	20000	15995
KA3451	CHEVY	454HP	4.63	80 GAL	178+TAG	18500	20000	15995
KA3455	CHEVY	454HP	4.63	80 GAL	178+TAG	18500	20000	15700
KA3458	CHEVY	454HP	4.63	80 GAL	178+TAG	18500	20000	15745

Lengths, Heights, Widths and Dry Weights are approximate.

1996 Kountry Aire® Class A Ford Chassis Information

Model	Chassis	Engine	Axle Ratio	Fuel Cap.	Wheel Base	GVWR	GCWR	Unloaded Vehicle Weight
KA3255	FORD	460 HP	5.13	75 GAL	200	17000	25000	14050
KA3410	FORD	460 HP	5.13	75 GAL	178+TAG	20000	25000	15575
KA3450	FORD	460 HP	5.13	75 GAL	178+TAG	20000	25000	16495
KA3451	FORD	460 HP	5.13	75 GAL	178+TAG	20000	25000	16495
KA3455	FORD	460 HP	5.13	75 GAL	178+TAG	20000	25000	16200
KA3458	FORD	460 HP	5.13	75 GAL	178+TAG	20000	25000	16245
KA3710	FORD	460 HP	5.13	75 GAL	200+TAG	20000	25000	16095
KA3755	FORD	460 HP	5.13	75 GAL	200+TAG	20000	25000	17188
KA3756	FORD	460 HP	5.13	75 GAL	200+TAG	20000	25000	16950
KA3757	FORD	460 HP	5.13	75 GAL	200+TAG	20000	25000	17135
KA3760	FORD	460 HP	5.13	75 GAL	200+TAG	20000	25000	17060

Lengths, Heights, Widths and Dry Weights are approximate.

1996 Kountry Aire® Class A Sizes and Capacities

Model	Exterior			Interior		Grey Tank	Sewage Tank	Water Tank	Furnace BTU
	Length	Width	Height	Width	Height				
KA3255	32' 10"	96"	11' 8"	90-1/2"	78"	50 GAL	50 GAL	56 GAL	35000
KA3410	34' 10"	96"	11' 8"	90-1/2"	78"	50 GAL	50 GAL	56 GAL	35000
KA3450	34' 10"	96"	11' 8"	90-1/2"	78"	50 GAL	50 GAL	56 GAL	35000
KA3451	34' 10"	96"	11' 8"	90-1/2"	78"	50 GAL	50 GAL	56 GAL	35000
KA3455	34' 10"	96"	11' 8"	90-1/2"	78"	50 GAL	50 GAL	56 GAL	35000
KA3458	34' 10"	96"	11' 8"	90-1/2"	78"	50 GAL	50 GAL	56 GAL	35000
KA3710	37' 11"	96"	11' 8"	90-1/2"	78"	50 GAL	50 GAL	56 GAL	40000
KA3755	37' 11"	96"	11' 8"	90-1/2"	78"	50 GAL	50 GAL	56 GAL	40000
KA3756	37' 11"	96"	11' 8"	90-1/2"	78"	50 GAL	50 GAL	56 GAL	40000
KA3757	37' 11"	96"	11' 8"	90-1/2"	78"	50 GAL	50 GAL	56 GAL	40000
KA3760	37' 11"	96"	11' 8"	90-1/2"	78"	50 GAL	50 GAL	56 GAL	40000

Lengths, Heights, Widths and Dry Weights are approximate.



An American Tradition of Excellence.

Share in the benefits of joining the Newmar Kountry Klub, a "family" with a network of chapters throughout the United States and Canada.

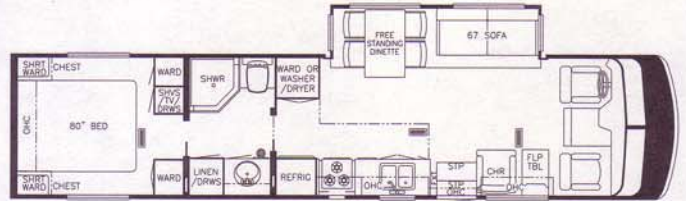
All you need for eligibility is to be the proud owner of any one of the fine Newmar motorhomes or towables.

355 N DELAWARE ST
PO BOX 30
NAPPANEE IN 46550-0030

1996 Kountry Aire® Class A Floor Plans



KA3255



KA3755



KA3410



KA3710



KA3450



KA3756



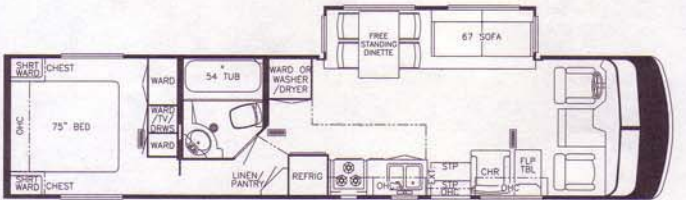
KA3451



KA3757



KA3455



KA3760



Prices, specifications and floor plans are subject to change at Newmar's discretion without prior written notice or obligation. Some floor plans may show optional chairs or and

Kountry Aire® Class A

1996 Standard Features

Air Conditioning & Heating

Air Conditioner, Central Penguin 13.5M BTU w/Heat Strip (1)
Heat, in Floor Ducted
LP Gas Tank, 32 Gallons
LP Leak Detector

Apliances & Accessories

Carbon Monoxide Detector
CB Antenna
Horn (trumpet)
Microwave Oven/Convection, 30"
Range Cover, Laminated w/Matching Countertop Material
Range, Recessed Wedgewood 3-Burner Hot Plate
Rear View Monitor System
Refrigerator, Dometic Royale 3862
Refrigerator Front, Framed Hardwood Raised Panel
Stereo, AM/FM Cassette w/Clock
Telephone Hookup w/Jack (1)
TV Antenna w/Power Booster & 2 Jacks
TV, Cable Ready
TV, Color 19"
TV Jack for Exterior Use on Door Side
TV Video Switch
Water Heater, 10 Gallon Gas/Electric w/ Direct Spark Ignition

Cabinets & Furniture

Cabinetry, Oak Hardwood w/Raised Panel Cathedral Doors
Chair, Flexsteel Swivel Barrel
Corian Countertop & Lavatory Bowl in Bath
Corian Countertop in Kitchen w/Recessed Sink
Dinette Table, Hidden Leaf w/Four Fully Upholstered Chairs
Drawers w/Metal Guides & Side Rollers
Front Seats, Flexsteel Swivel/Recline
Lifts for Convenient Storage Under Fixed Beds
Molded Silverware Divider Tray
Seat, 6-Way Power on Driver's Side
Sofa, Flexsteel (sleeper)

Chassis Features

Chassis, Ford (460 CID engine) w/Radial Tires

Air Conditioning & Heating

Air Conditioner, Brisk Air 15M BTU w/Heat Strip (extra) 105 lbs.
Air Conditioner, Brisk Air 15M BTU w/Heat Strip in Place of 13.5M 10 lbs.
Air Conditioner, Central Penguin 13.5M BTU w/Heat Strip (extra) 105 lbs.

Apliances & Accessories

CB Radio 2 lbs.
Icemaker Added to Dometic Refrigerator 5lbs.
Security System 2 lbs.
Washer/Dryer Prep (3450, 3451, 3455, 3755, 3756, 3757, 3760) 22 lbs.
Washer/Dryer, Sears (3450, 3451, 3455, 3755, 3756, 3757, 3760) 269 lbs.

Cabinets & Furniture

Chassis Features (continued)

Cruise Control
Dash Heater/Air Conditioner, High Output
Recessed Fuel Fill w/Locking Door
Spare Tire
Steering Wheel Tilt
Suspension, Granning Tag Axle (except 3255)
Wheel Simulators, Stainless Steel

Electrical Features

Battery Disconnect (coach battery w/1 switch)
Battery, Thermoil (2-12 volt)
Converter, 75 AMP w/Charger
Daytime Headlight System
Electrical Service, 50 AMP w/Flexible Cord
Gen, 6.5 KW Onan w/Remote Switch & Automatic Changeover (1)
Light Spot w/Remote Control
Lighting, Fluorescent Recessed in Ceiling
Lights, Docking
Lights, Driving
Lights in Wardrobes w/Automatic Switches
Lights, Interior Courtesy
Midship Side Turn Signals
Recepts, 110 Volt w/Ground Fault Interrupter (interior & exterior)
Switch for Emergency Chassis Engine Start

Exterior Features

Convex Exterior Mirrors w/Remote Control, Defrost & Turn Signals
Exterior Front & Rear, Gel-Coated Fiberglass End Caps
Exterior Sides, Gel-Coated Fiberglass
Hitch for Towing Car w/Wire Connector
Jacks, Hydraulic Leveling w/Joystick Controller
Mud Flaps (front & rear)
Roof Rack & Ladder
Roof, Rubber
Slideout, Large w/Flat Floor (see floorplans for availability & layout)
Undercoating

Interior Features

Bedsread, Quilted w/Matching Shams & Accent Pillow
Ceiling, Woven Soft Touch
Decorative Wall Clock & Mirror

1996 Optional Features

Cabinets & Furniture (continued)

Cabinetry, Bleached Oak Hardwood 25 lbs.
Cabinetry, Cherry Hardwood w/Raised Panel Cathedral Doors 0 lbs.
Chair, Flexsteel High Back Recliner (cloth) 45lbs.
Chair, Flexsteel High Back Recliner Leather/Vinyl 75 lbs.
Chair, Flexsteel Large Recliner w/Non-Sleeper
Sofa (cloth) (except 3410, 3710)
Front Seats, Flexsteel Leather/Vinyl w/Power Lumbar Support 39 lbs.

Electrical Features

Light, Exterior Security (each) 1 lbs.

Exterior Features

Jacks, Hydraulic Leveling w/"Touch" Manual Control

Interior Features (continued)

Floor Covering, Carpet Staintech, 45 oz.
100% Nylon Plush Saxony
Floor Covering, Carpet w/High Density Pad
Floor Covering, Hardwood Plank in Kitchen Area
Sink Covers, (2)
Smoke Detector & 10BC Fire Extinguisher
Window Treatment, Day/Night Pleated Shades & Lamberquins
Window Treatment, Mini Blinds (kitchen)

Plumbing / Bath Features

Bath Accessories Brass (1 each towel bar, tissue holder, towel ring & robe hook)
Faucet for Kitchen Sink, Single Handle High Rise (Moen)
Faucet for Shower & Lavatory, Single Handle (Moen)
Monitor Panel
Sewage Holding Tank Rinse
Sewage Hose Holder (easy access flop down tray)
Stool, China w/Spray Attachment
Tub/Shower, Fiberglass w/Enclosure
Water Filtering System w/Drink Dispenser (kitchen)
Winterize Convenience Package (w/water heater bypass)

Construction Features

Floor Decking, Structurewood
Insulation, Fiberglass R7 Sidewalls & Floor, R19 Roof
Insulation, Foam 5/8" Laminated in Sidewalls & Ceiling
Rear Bumper w/Slideout Tray for Spare Tire
Structure, Aluminum Sidewalls & Roof

Windows, Awnings & Vents

Door Bell
Door, Driver's Side w/Power Window
Entrance Door, Stepwell Tread Liner
Exterior, Lighted Acrylic Assist Handle (at main entrance door)
Skylight in Bathroom w/Soft Shade
Step, 12 Volt Automatic (double)
Step, Fold Down in Front Bumper
Vent, 12 Volt Fantastic w/Rain Sensor in Kitchen
Vent, 12 Volt in Bath Area w/Wall Switch
Windows, Radius Safety Glass Dark Tinted

Interior Features

State Seal 0 lbs.

Plumbing / Bath Features

Heat Pads for Holding Tanks, 110 Volt 2 lbs.
Shower Exterior Hook-Up 2 lbs.

Windows, Awnings & Vents

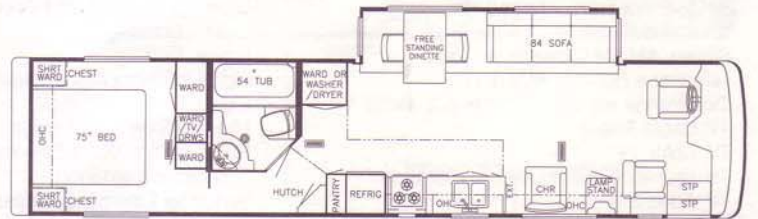
Awning, Side A & E 9000 127 lbs.
Awning, Side Tension Rafter 5 lbs.
Awning Slideout Cover 0 lbs.
Awning, Window A & E 9000 (per window) 5 lbs.



MP4059



MP4056

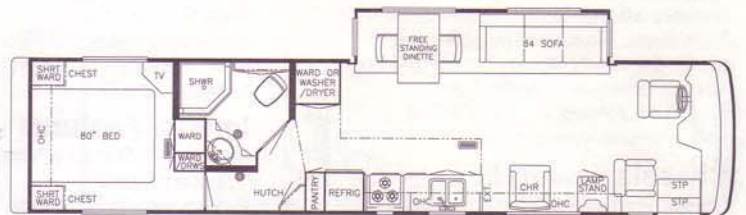


MP4060



MP4057

Prices, specifications and floor plans are subject to change at Newmar's discretion without prior written notice or obligation. Some floor plans may show optional chairs or end tables. See dealer for availability.



MP4062

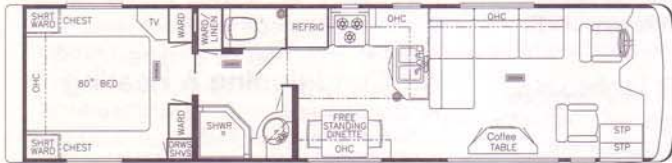
1996 Mountain Aire® Diesel Pusher Spartan Chassis Information

Model	Chassis	Engine	Axle Ratio	Fuel Cap.	Wheel Base	GVWR	GCWR	Unloaded Vehicle Weight
MP3730	SPARTAN	250 HP	4.63	100 GAL	240	26000	42000	20100
MP3855	SPARTAN	250 HP	4.63	100 GAL	252	26000	42000	21735
MP3856	SPARTAN	250 HP	4.63	100 GAL	252	26000	42000	21735
MP3857	SPARTAN	250 HP	4.63	100 GAL	252	26000	42000	21570
MP3860	SPARTAN	250 HP	4.63	100 GAL	252	26000	42000	21535
MP4055	SPARTAN	250 HP	4.63	150 GAL	276	29400	42000	22245
MP4056	SPARTAN	250 HP	4.63	150 GAL	276	29400	42000	22345
MP4057	SPARTAN	250 HP	4.63	150 GAL	276	29400	42000	22345
MP4059	SPARTAN	250 HP	4.63	150 GAL	276	29400	42000	22200
MP4060	SPARTAN	250 HP	4.63	150 GAL	276	29400	42000	22245

1996 Mountain Aire® Diesel Pusher Floor Plans



MP3857



MP3730



MP3860



MP3855



MP4055



MP3856

1996 Mountain Aire® Diesel Pusher Sizes and Capacities

Model	Length	Exterior		Interior		Grey Tank	Sewage Tank	Water Tank	Furnace BTU
		Width	Height	Width	Height				
MP3730	37' 0"	101"	11' 8"	95-1/2"	78"	55 GAL	55 GAL	105 GAL	40000
MP3855	38' 0"	101"	11' 8"	95-1/2"	78"	55 GAL	55 GAL	105 GAL	40000
MP3856	38' 0"	101"	11' 8"	95-1/2"	78"	55 GAL	55 GAL	105 GAL	40000
MP3857	38' 0"	101"	11' 8"	95-1/2"	78"	55 GAL	55 GAL	105 GAL	40000
MP3860	38' 0"	101"	11' 8"	95-1/2"	78"	55 GAL	55 GAL	105 GAL	40000
MP4055	40' 0"	101"	11' 8"	95-1/2"	78"	55 GAL	55 GAL	105 GAL	40000
MP4056	40' 0"	101"	11' 8"	95-1/2"	78"	55 GAL	55 GAL	105 GAL	40000
MP4057	40' 0"	101"	11' 8"	95-1/2"	78"	55 GAL	55 GAL	105 GAL	40000
MP4059	40' 0"	101"	11' 8"	95-1/2"	78"	55 GAL	55 GAL	105 GAL	40000

Mountain Aire® Diesel Pusher

1996 Standard Features

Air Conditioning & Heating

Air Conditioner, Central Penguin 13.5M BTU w/Heat Strip (1)
Heat, in Floor Ducted
LP Gas Tank, 32 Gallons
LP Leak Detector

Appliances & Accessories

Carbon Monoxide Detector
CB Antenna
Horn (air)
Microwave Oven/Convection, 30"
Range Cover Laminated w/Matching Countertop Material
Range, Recessed Wedgewood 3-Burner Hot Plate
Rear View Monitor System
Refrigerator, Dometic Royale 3862
Refrigerator Front, Black Plexiglass
Stereo, AM/FM Cassette w/Clock
Telephone Hookup w/Jack (1)
TV Antenna w/Power Booster & 2 Jacks
TV, Cable Ready
TV, Color 19"
TV Jack for Exterior Use on Door Side
TV Video Switch
VCR
Water Heater, 10 Gallon Gas/Electric w/Direct Spark Ignition

Cabinets & Furniture

Cabinetry, Oak Hardwood w/Raised Panel Cathedral Doors
Chair, Flexsteel Swivel Barrel
Drawers w/Metal Guides & Side Rollers
Front Seats, Flexsteel Swivel/Recline
Lifts for Convenient Storage Under Fixed Beds
Molded Silverware Divider Tray
Pull-Out Pantry (except 3730, 3860, 4059)
Seat, 6-Way Power on Driver's Side
Sofa, Flexsteel (sleeper)

Chassis Features

Chassis, Spartan Mountain Master 250HP
Raised Rail
Air Brakes w/Auto Slack Adjuster Front & Rear
Anti-Lock Braking System
Back-Up Alarm
Cruise Control
Dash Heater/Air Conditioner, High Output
Pack 8 Exhaust Engine Brake
Recessed Fuel Fill w/Locking Door (one on each side)
Steering Wheel Tilt & Telescope
Suspension, Self Leveling Air Ride
Wheels, Polished Aluminum

Electrical Features

Battery Disconnect (coach & chassis batteries)
Battery, Thermoil (4-6 volt)
Converter, 75 AMP w/Charger
Electrical Service, 50 AMP w/Flexible Cord
Gen, 7.0 KW Power Tech (diesel) on Slides w/Automatic Changeover
Lighting, Fluorescent Recessed in Ceiling
Lights, Docking
Lights, Driving
Lights in Wardrobes
Lights, Interior Courtesy
Recepts, 110 Volt w/Ground Fault Interrupter (interior & exterior)

Exterior Features

Convex Exterior Mirrors w/Remote Control and Defrost, Front Mounted
Exterior Front & Rear, Gel-Coated Fiberglass End Caps
Exterior Sides, Gel-Coated Fiberglass
Hitch for Towing Car w/Wire Connector
Jacks, Hydraulic Leveling w/Automatic Control
Mud Flaps (front & rear)
Roof Rack & Ladder
Slideout, Large w/Flat Floor (see floorplans for availability & layout)
Undercoating

Interior Features

Bedsprad, Quilted w/Matching Shams & Accent Pillow
Ceiling, Woven Soft Touch
Decorative Wall Clock & Mirror
Floor Covering, Carpet Staintech, 45 oz. 100% Nylon Plush Saxony
Floor Covering, Carpet w/High Density Pad
Floor Covering, Hardwood Plank in Kitchen Area
Sink Covers, (2)
Smoke Detector & 10BC Fire Extinguisher
Window Treatment, Day/Night Pleated Shades & Lamberquins
Window Treatment, Mini Blinds (kitchen)

Plumbing / Bath Features

Bath Accessories, White (2 towel bars, 1 tissue holder & robe hook)
Monitor Panel
Sewage Holding Tank Rinse
Stool, China w/Spray Attachment
Tub/Shower, Fiberglass w/Enclosure
Water Filtering System w/Drink Dispenser (kitchen)
Water Hose w/Automatic Rewind & City Water Hook-Up
Winterize Convenience Package (w/water heater bypass)

Construction Features

Floor Decking, Structurewood
Insulation, Fiberglass R7 Sidewalls & Floor, R11 Roof
Insulation, Foam 5/8" Laminated in Sidewalls & Ceiling
Structure, Aluminum Sidewalls & Roof
Structure, Widebody 100" w/Bus Style Front End

Windows, Awnings & Vents

Door Bell
Entrance Door, Stepwell Tread Liner
Exterior Lighted Acrylic Assist Handle (at main entrance door)
Skylight in Bathroom w/Soft Shade
Step, 12 Volt Automatic (double)
Vent, 12 Volt Fantastic w/Rain Sensor in Kitchen
Vent, 12 Volt in Bath Area w/Wall Switch
Windows, Radius Safety Glass Dark Tinted

1996 Optional Features

Exterior Features

Roof & Radius Top Wrap, Gel-Coated Fiberglass (per foot) 10 lbs.

Interior Features

1996 Optional Features

Windows, Awnings & Vents

Awning, Side A & E 9000 127 lbs.
Awning, Side Tension Rafter 5 lbs.
Awning Slideout Cover 0 lbs.
Awning, Window A & E 9000 (per window) 5 lbs.
Door, Driver's Side w/Power Window .. 50 lbs.
Windows, Thermopane in Place of Standard 400 lbs.

Air Conditioning & Heating

Air Conditioner, Brisk Air 15M BTU w/Heat Strip (extra) 105 lbs.
Air Conditioner, Brisk Air 15M BTU w/Heat Strip in Place of 13.5M 10 lbs.
Air Conditioner, Central Penguin 13.5M BTU w/Heat Strip (extra) 105 lbs.

Appliances & Accessories

CB Radio 2 lbs.
Cellular Telephone Antenna 1 lbs.
Freezer, Norcold AC/DC (on slides) in Exterior Storage Compartment 40 lbs.
Icemaker Added to Dometic Refrigerator 5 lbs.
Refrigerator, Dometic Side by Side (3855, 3856, 3857, 4055, 4056, 4057, 4060, 4062) 75 lbs.
Security System 2 lbs.
Washer/Dryer Prep (3855, 3856, 3857, 3860, 4055, 4056, 4057, 4059, 4060, 4062) 22 lbs.
Washer/Dryer, Sears (3855, 3856, 3857, 3860, 4055, 4056, 4057, 4059, 4060, 4062) 269 lbs.

Cabinets & Furniture

Built-In Dinette in Place of Free Standing Table/Chairs 3 lbs.
Cabinetry, Bleached Oak Hardwood 25 lbs.
Chair, Flexsteel High Back Recliner (cloth) 45 lbs.
Chair, Flexsteel High Back Recliner Leather/Vinyl 75 lbs.
Chair, Flexsteel Large Recliner w/Non-Sleeper Sofa (cloth) (except 3730)

Cabinets & Furniture (continued)

Corian Countertop Bath & Kitchen (w/recessed kitchen sink) 15 lbs.
Dinette Chairs Fixed, Two Extra 20 lbs.
Front Seats, Flexsteel Leather/Vinyl w/Power Lumbar Support 39 lbs.

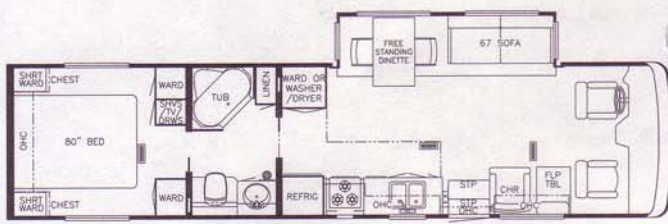
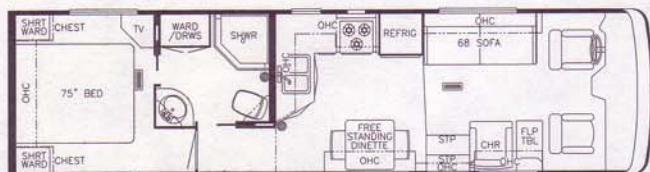
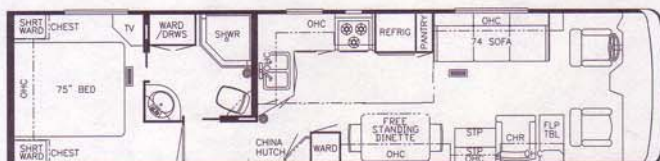
Chassis Features

Chassis, Spartan Mountain Master 300 HP Raised Rail

Electrical Features

Inverter/Converter (Heart Freedom 20) 25 lbs.
Light, Exterior Security (each) 1 lbs.
Light Spot w/Remote Control 3 lbs.

1996 Mountain Aire® Class A Floor Plans



1996 Optional Packages

F6 Preferred Equipment ... 408 lbs.

Air Conditioning & Heating

Air Conditioner, Brisk Air 15M BTU w/Heat Strip (extra)	105 lbs.
Air Conditioner, Brisk Air 15M BTU w/Heat Strip in Place of 13.5M	10 lbs.
Air Conditioner, Central Penguin 13.5M BTU w/Heat Strip (extra)	105 lbs.

Appliances & Accessories

CB Radio	2 lbs.
Horn (trumpet)	2 lbs.
Icemaker Added to Dometic Refrigerator	5 lbs.
Microwave Oven/Convection, 30" w/3 Burner Hot Plate	75 lbs.
Security System	2 lbs.
TV Jack for Exterior Use on Door Side	1 lbs.
Washer/Dryer Prep (3450, 3451, 3455, 3755, 3756, 3757, 3760)	22 lbs.
Washer/Dryer, Sears (3450, 3451, 3455, 3755, 3756, 3757, 3760)	269 lbs.

Cabinets & Furniture

Bed, Twins (except 3255, 3458)	50 lbs.
Built-In Dinette in Place of Free Standing Table/Chairs	3 lbs.

Cabinets & Furniture (continued)

Cabinetry, Bleached Oak Hardwood	25 lbs.
Chair, Flexsteel High Back Recliner (cloth)	45 lbs.
Chair, Flexsteel High Back Recliner Leather/Vinyl	75 lbs.
Chair, Flexsteel Large Recliner w/Non-Sleeper Sofa (cloth) (except 3410, 3710)	
Dinette Chairs Fixed, Two Extra	20 lbs.
Front Seats, Flexsteel Leather/Vinyl w/Power Lumbar Support	39 lbs.
Seat, 6-Way Power on Driver's Side	77 lbs.

Electrical Features

Light, Exterior Security (each)	1 lbs.
Light Spot w/Remote Control	3 lbs.
Lighting, Fluorescent Recessed in Ceiling	1 lbs.
Lights, Docking	4 lbs.

Exterior Features

Roof & Radius Top Wrap, Gel-Coated Fiberglass (per foot)	10 lbs.
--	---------

Interior Features

State Seal	0 lbs.
------------------	--------

Plumbing / Bath Features

Heat Pads for Holding Tanks, 110 Volt	2 lbs.
Shower Exterior Hook-Up	2 lbs.
Water Filtering System w/Drink Dispenser (kitchen)	5 lbs.

Windows, Awnings & Vents

Awning, Side A & E 9000	127 lbs.
Awning, Side Tension Rafter	5 lbs.
Awning Slideout Cover	0 lbs.
Awning, Window A & E 9000 (per window)	5 lbs.
Door, Driver's Side w/Power Window ...	50 lbs.

Option Packages

F6 Preferred Equipment

Electrical Service, 50 AMP w/Flexible Cord
Rear View Monitor System
Generator, 6.5 KW Onan in Place of Standard
Jacks, Hydraulic Leveling w/"Touch" Manual Control

1996 Mountain Aire® Class A Ford Chassis Information

Model	Chassis	Engine	Axle Ratio	Fuel Cap.	Wheel Base	GVWR	GCWR	Unloaded Vehicle Weight
MA3255	FORD	460	5.13	75 GAL	200	17000	25000	14050
MA3410	FORD	460	5.13	75 GAL	178+TAG	20000	25000	15575
MA3450	FORD	460	5.13	75 GAL	178+TAG	20000	25000	16495
MA3451	FORD	460	5.13	75 GAL	178+TAG	20000	25000	16495
MA3455	FORD	460	5.13	75 GAL	178+TAG	20000	25000	16200
MA3458	FORD	460	5.13	75 GAL	178+TAG	20000	25000	16245
MA3710	FORD	460	5.13	75 GAL	200+TAG	20000	25000	16095
MA3755	FORD	460	5.13	75 GAL	200+TAG	20000	25000	17188
MA3756	FORD	460	5.13	75 GAL	200+TAG	20000	25000	16950
MA3757	FORD	460	5.13	75 GAL	200+TAG	20000	25000	17135
MA3760	FORD	460	5.13	75 GAL	200+TAG	20000	25000	17060

Lengths, Heights, Widths and Dry Weights are approximate.

1996 Mountain Aire® Class A Chevy Chassis Information

Model	Chassis	Engine	Axle Ratio	Fuel Cap.	Wheel Base	GVWR	GCWR	Unloaded Vehicle Weight
MA3255	CHEVY	454 HP	4.63	80 GAL	200	16500	20000	13550
MA3410	CHEVY	454 HP	4.63	80 GAL	178+TAG	18500	20000	15075
MA3450	CHEVY	454 HP	4.63	80 GAL	178+TAG	18500	20000	15995
MA3451	CHEVY	454 HP	4.63	80 GAL	178+TAG	18500	20000	15995
MA3455	CHEVY	454 HP	4.63	80 GAL	178+TAG	18500	20000	15700
MA3458	CHEVY	454 HP	4.63	80 GAL	178+TAG	18500	20000	15745

Mountain Aire® Class A

1996 Standards Features

Air Conditioning & Heating

Air Conditioner, Central Penguin 13.5M BTU w/Heat Strip (1)
Heat, in Floor Ducted
LP Gas Tank, 32 Gallons
LP Leak Detector

Appliances & Accessories

Carbon Monoxide Detector
CB Antenna
Microwave Oven, 22"
Range Cover Laminated w/Matching Countertop Material
Range Hood w/Light & Fan
Range, Recessed Wedgewood 3-Burner w/Black Glass Oven Door
Refrigerator, Dometic Royale 3862
Refrigerator Front, Black Plexiglass
Stereo, AM/FM Cassette w/Clock
Telephone Hookup w/Jack (1)
TV Antenna w/Power Booster & 2 Jacks
TV, Cable Ready
TV, Color 19"
TV Video Switch
Water Heater, 10 Gallon Gas/Electric w/Direct Spark Ignition

Cabinets & Furniture

Cabinetry, Oak Hardwood w/Raised Panel Cathedral Doors
Chair, Flexsteel Swivel Barrel
Drawers w/Metal Guides & Side Rollers
Front Seats, Flexsteel Swivel/Recline
Lifts for Convenient Storage Under Fixed Beds
Molded Silverware Divider Tray
Sofa, Flexsteel (sleeper)

Chassis Features

Chassis, Ford (460 CID engine) w/Radial Tires
Cruise Control
Dash Heater/Air Conditioner, High Output

Chassis Feature (continued)

Recessed Fuel Fill w/Locking Door
Spare Tire
Steering Wheel Tilt
Suspension, Granning Tag Axle (except 3255)
Wheel Simulators, Stainless Steel

Electrical Features

Battery Disconnect (coach battery w/1 switch)
Battery, Thermoil (2-12 volt)
Converter, 75 AMP w/Charger
Electrical Service, 30 AMP
Gen, 4.0 KW Onan w/Remote Switch & Automatic Changeover
Lights, Driving
Lights in Exterior Storage Compartments
Lights in Wardrobes
Lights, Interior Courtesy
Receipts, 110 Volt w/Ground Fault Interrupter (interior & exterior)
Switch for Emergency Chassis Engine Start

Exterior Features

Convex Exterior Mirrors w/Remote Control and Defrost, Front Mounted
Exterior Front & Rear, Gel-Coated Fiberglass End Caps
Exterior Sides, Gel-Coated Fiberglass
Hitch for Towing Car w/Wire Connector
Mud Flaps (front & rear)
Roof Rack & Ladder
Roof, Rubber
Slideout, Large w/Flat Floor (see floorplans for availability & layout)
Undercoating

Interior Features

Bedspread, Quilted w/Matching Shams & Accent Pillow
Ceiling, Woven Soft Touch
Decorative Wall Clock & Mirror

Interior Features (continued)

Floor Covering, Carpet Staintech, 45 oz. 100% Nylon Plush Saxony
Floor Covering, Carpet w/High Density Pad
Floor Covering, Hardwood Plank in Kitchen Area
Sink Covers, (2)
Smoke Detector & 10BC Fire Extinguisher
Window Treatment, Day/Night Pleated Shades & Lamberquins
Window Treatment, Mini Blinds (kitchen)

Plumbing / Bath Features

Bath Accessories, White (2 towel bar, 1 tissue holder & robe hook)
Monitor Panel
Sewage Holding Tank Rinse
Sewage Hose Holder (easy access flop down tray)
Stool, China w/Spray Attachment
Tub/Shower, Fiberglass w/Enclosure
Winterize Convenience Package (w/water heater bypass)

Construction Features

Floor Decking, Structurewood
Insulation, Fiberglass R7 Sidewalls & Floor, R11 Roof
Rear Bumper w/Slide Out Tray for Spare Tire
Structure, Widebody 100" w/Bus Style Front End

Windows, Awnings & Vents

Door Bell
Entrance Door, Stepwell Tread Liner
Skylight in Bathroom w/Soft Shade
Step, 12 Volt Automatic (double)
Step, Fold Down in Front Bumper
Vent, 12 Volt Fantastic w/Rain Sensor in Kitchen
Vent, 12 Volt in Bath Area w/Wall Switch
Windows, Radius Safety Glass Dark Tinted

1996 Mountain Aire® Class A Sizes and Capacities

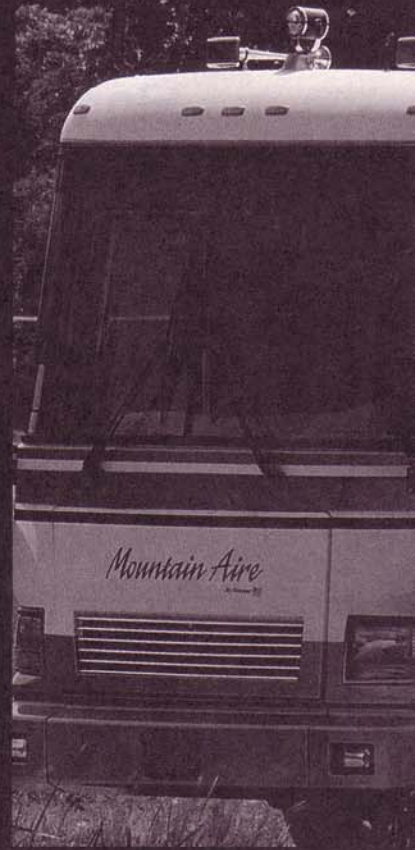
Model	Length	Exterior		Interior		Grey Tank	Sewage Tank	Water Tank	Furnace BTU
		Width	Height	Width	Height				
MA3255	32' 5"	101"	11' 8"	95-1/2"	78"	50 GAL	50 GAL	56 GAL	35000
MA3410	34' 6"	101"	11' 8"	95-1/2"	78"	50 GAL	50 GAL	56 GAL	35000
MA3450	34' 6"	101"	11' 8"	95-1/2"	78"	50 GAL	50 GAL	56 GAL	35000
MA3451	34' 6"	101"	11' 8"	95-1/2"	78"	50 GAL	50 GAL	56 GAL	35000
MA3455	34' 6"	101"	11' 8"	95-1/2"	78"	50 GAL	50 GAL	56 GAL	35000
MA3458	34' 6"	101"	11' 8"	95-1/2"	78"	50 GAL	50 GAL	56 GAL	35000
MA3710	37' 7"	101"	11' 8"	95-1/2"	78"	50 GAL	50 GAL	56 GAL	40000
MA3755	37' 7"	101"	11' 8"	95-1/2"	78"	50 GAL	50 GAL	56 GAL	40000
MA3756	37' 7"	101"	11' 8"	95-1/2"	78"	50 GAL	50 GAL	56 GAL	40000
MA3757	37' 7"	101"	11' 8"	95-1/2"	78"	50 GAL	50 GAL	56 GAL	40000
MA3760	37' 7"	101"	11' 8"	95-1/2"	78"	50 GAL	50 GAL	56 GAL	40000

Mountain Aire • Kountry Aire

Class A & Diesel Pusher by Newmar



1996 Mountain Aire®



Specifications



1996 Kountry Aire®



An American Tradition of Excellence

1996 Mountain Aire • KOUNTRY AIRE



1996 Mountain Aire® Class A



1996 Mountain Aire® Diesel Pusher



1996 Kountry Aire® Class A

Uncompromising work standards are only a part of what Newmar's world-class quality is all about. Professionals working together to produce distinctive, dependable and durable products that will serve you for many years. Our aim is to maintain the highest standards in quality and customer service.

We invite you to visit our new, built in 1995, state-of-the-art production facility in Nappanee, Indiana. Tours are offered weekdays at 10:00 A.M. and 2:00 P.M. E.S.T.

Mahlon Miller

Mahlon Miller
Chairman of the Board

Don't forget to check out the Klub - the Newmar Kountry Klub, that is. All you need to be eligible is to be the proud owner of any one of the fine Newmar recreational vehicles. ***Newmar Kountry Klub***

Some features shown in our literature may be optional. Colors and finishes are photographic representations and may appear differently when viewing actual materials. Please see your Dealer for actual samples and specifications.

Compliments of:



An American Tradition of Excellence.

255 N. DELAWARE ST.



Newmar's innovative slideout design makes the living and dining areas as comfortable and enjoyable as your home.

Oak cabinets with custom Corian countertops are a unique addition to the Kountry Aire® kitchen. Brand name appliances are among the list of standard amenities.



You won't find anyone better at producing slideouts—Newmar pioneered them in motorhomes. Their team of engineers have perfected the slideout technology so that a simple push of a button will quietly move the entire room outward to meet the adjoining floor.

The Kountry Aire® Class A motorhome is an excellent example of craftsmanship that only Newmar can provide. Each motorhome is professionally decorated and coordinated. Your visual senses are sure to enjoy the impressive impact that our slideout rooms can

provide. The Kountry Aire® is more than just a beautiful motorhome, it's tough, too. Built with all welded, aluminum sidewall and roof construction over the Newmar steel I-Beam chassis system and wrapped in distinctively designed graphics, this top of the line gas powered motorhome will endure in grand style.



We, at Newmar, invite you to experience for yourself, the craftsmanship of our dedicated employees by touring our new production plant. Located in Nappanee, Indiana, Newmar's team of skilled craftsmen has evolved from generations of honest, hard working ethics. You'll experience first hand how we blend old-world craftsmanship with modern day technology.



Optional six-way power leather driver and passenger seats enhance the spacious well designed cab area.

KOUNTRY AIRE





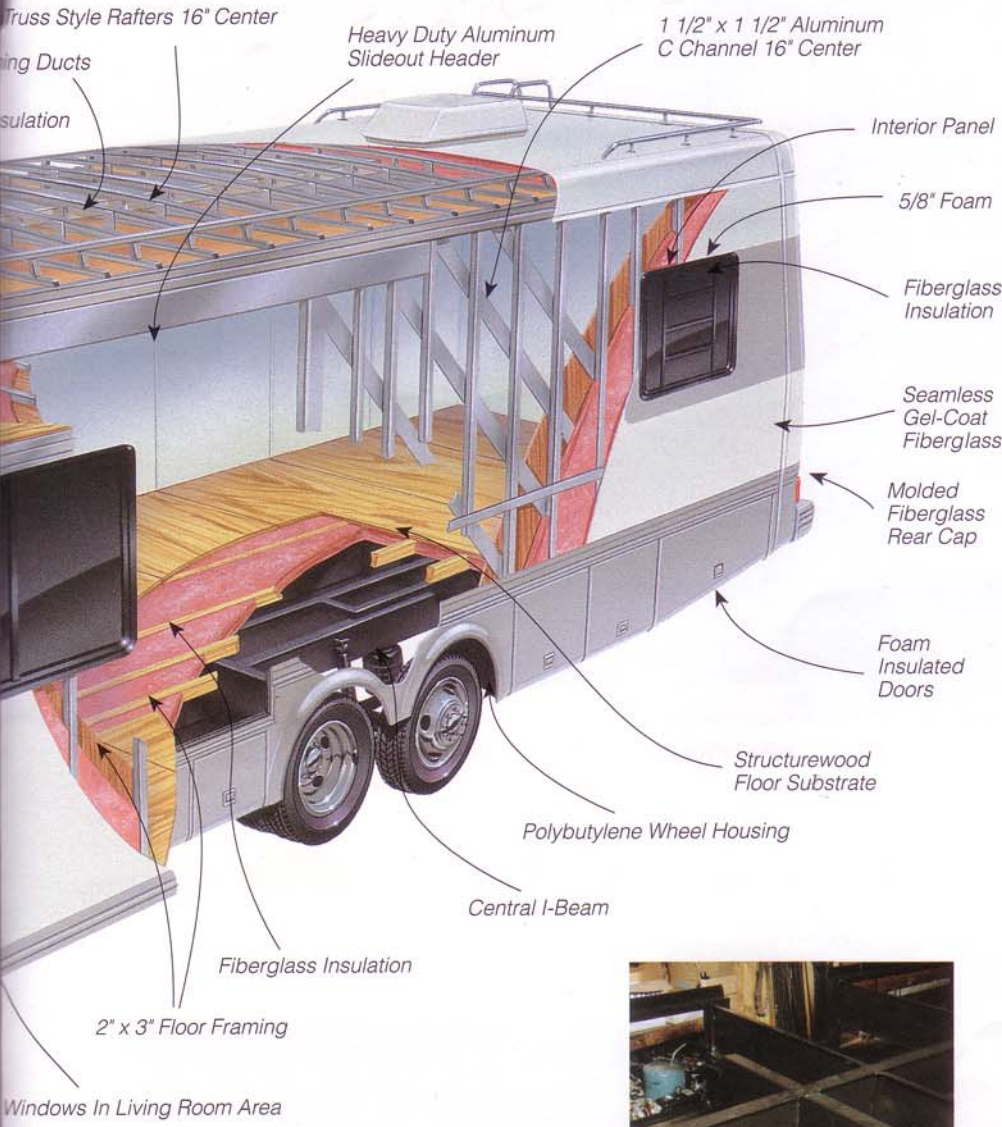
Five-eighths inch beaded foam is laminated to kraft paper and covered with interior paneling, then glued and screwed to the aluminum framed sidewalls.



An American Tradition of Excellence.



High quality craftsmanship and attention to details are a way of life in our custom wood shop.



A full coverage of fiberglass insulation completes the insulating process creating a composite R value as high as R22.



By incorporating the I-Beam into the construction of the Class A chassis, Newmar has strengthened the whole unit and provided a stronger, more durable foundation for the slideout system.

Construction of a Typical Newmar Motorhome



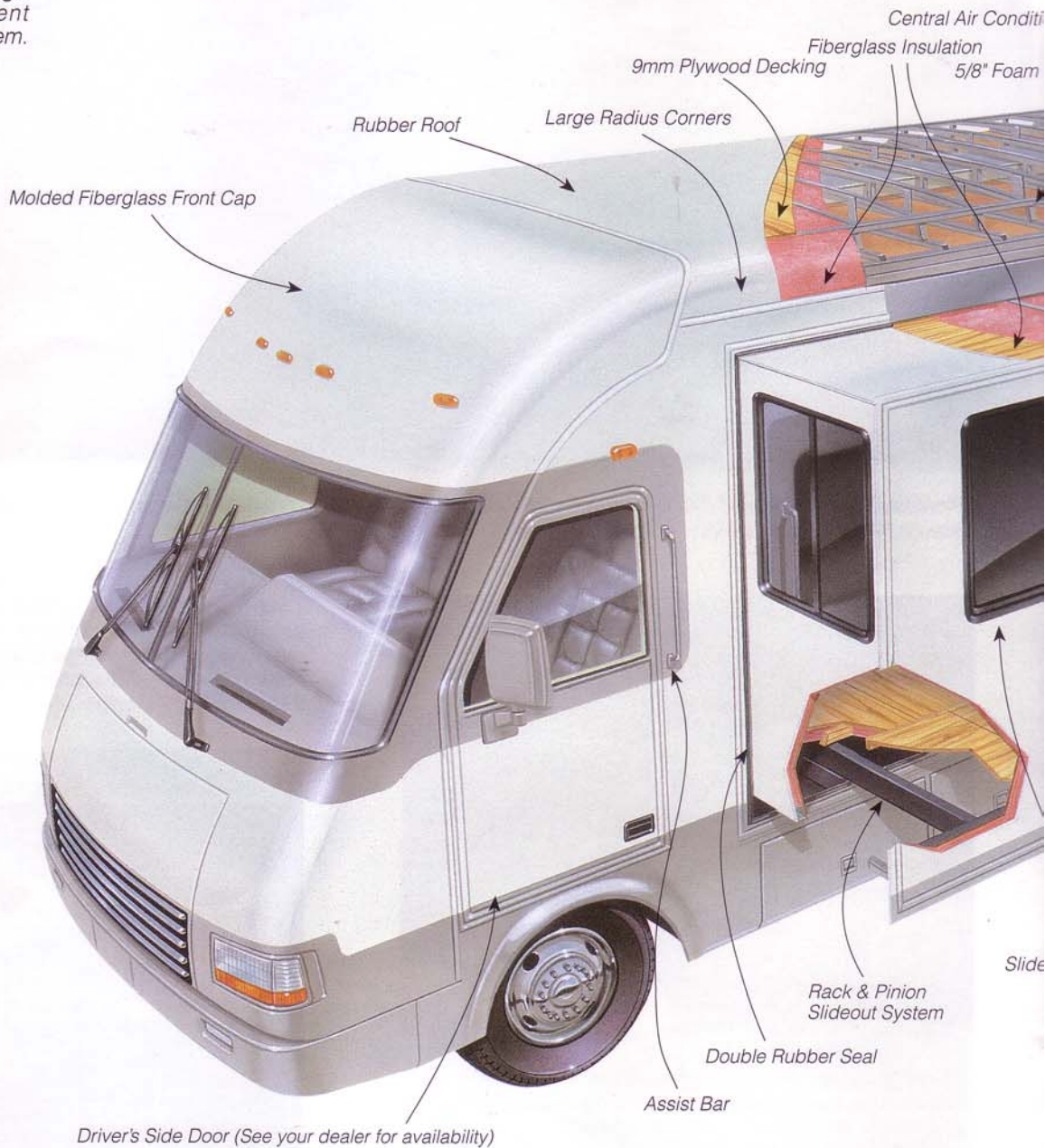
Truss-style rafters are built 16" on center and central air conditioning duct work is incorporated into the design to provide a more efficient central air conditioning system.



The welded aluminum sidewall construction is built with 16" on center framing, providing the strongest and most durable construction possible.



The Newmar engineers are specially trained on the latest CAD systems to continually provide new and innovative approaches to their designs.



Newmar's slideout technology





The innovated flush floor slideout design allows you to extend the dining area to comfortably seat four adults. This can only be accomplished when both floors are flush and level.

Professionally coordinated furniture and window treatments in the living room/dining room slideout provide a beautifully distinctive setting.



This floor-to-ceiling lighted curio cabinet is just one example of the many elegant furnishings found in a Mountain Aire®. (available in 3757, 3857 and 4057 models only)



Name brand appliances are among the list of fine features included in this well-equipped kitchen. Note the corner appliance garage that allows you to store portable appliances conveniently out of sight.



Join in the excitement of traveling the highways in your own Mountain Aire® motorhome. Your sense of adventure begins the moment you slide behind the wheel and discover the unequalled beauty and quality of a luxury Mountain Aire® built by Newmar Corporation. As an industry leader, Newmar's innovative slide-outs, uncompromising structural quality and elegant interior designs set them apart from the competition.

Nestled in the heart of Amish Country in northern Indiana, Newmar's team of skilled craftsmen and design engineers have taken pride in working

together to create a fantastic lineup of motorhomes for 1996. Newmar employees are also seasoned travelers; they can relate to each model as if it were their own.



The large living/dining room in our Diesel Pusher slides out to form a flush floor, eliminating the raised level that is typical of standard slideout designs.

Mountain Aire



Relax in pure comfort in this roomy recliner.

