

# American Star Kountry Star

1997 Travel Trailer & 5th Wheel



1997 American Star® Travel Trailer



1997 American Star® 5th Wheel



1997 Kountry Star® Travel Trailer

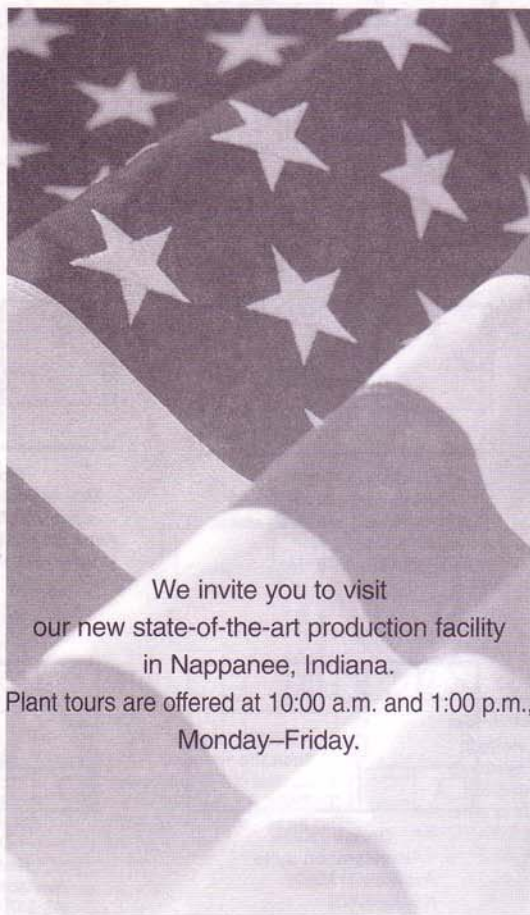


1997 Kountry Star® 5th Wheel



# American Star Kountry Star

1997 Travel Trailer & 5th Wheel



We invite you to visit  
our new state-of-the-art production facility  
in Nappanee, Indiana.  
Plant tours are offered at 10:00 a.m. and 1:00 p.m.,  
Monday–Friday.



## **[Newmar Kountry Klub]**

Don't forget to check out the Klub—the Newmar Kountry Klub, that is. All you need for eligibility is to be a proud owner of any of the fine Newmar recreational vehicles.

Compliments of:



1997 American Star® Travel Trailer



1997 American Star® 5th Wheel



1997 Kountry Star® Travel Trailer



1997 Kountry Star® 5th Wheel



An American Tradition of Excellence.



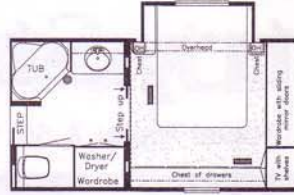
## 1997 • Custom Optional Floorplans



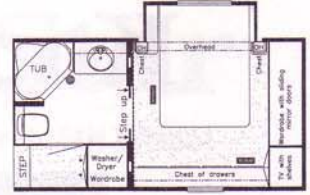
**Option 7K990**  
Double sliding doors with cabover  
slideout and vanity center  
when used with Option 7M390  
Available in Model:  
KS 36RKWB



**Option 7K990**  
Double sliding doors with cabover  
slideout and vanity center  
when used with Option 7M390  
Available in Models:  
KS 34RKSA KS 36RLSA



**Option 7K990**  
Double sliding doors with  
cabover slideout and dresser  
when used with Option 7M430  
Available in Model:  
KS 36RKWB



**Option 7K990**  
Double sliding doors when used  
with cabover slideout and dresser  
when used with Option 7M430  
Available in Models:  
KS 34RKSA KS 36RLSA



**Option 7K590**  
Side aisle wardrobe delete with  
honeymoon suite  
Available in Models:  
KS 34RKSA KS 36RLSA



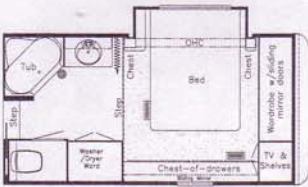
**Option 7M690**  
Side aisle wardrobe delete  
with cabover slideout  
Available in Models:  
KS 34RKSA KS 36RLSA



**Option 7M670**  
Side aisle wardrobe delete with  
cabover slideout and vanity center  
Available in Models:  
KS 34RKSA KS 36RLSA



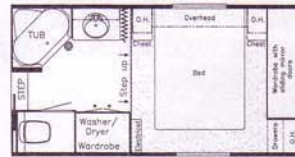
**Option 7M680**  
Side aisle wardrobe delete with  
cabover slideout and dresser  
Available in Models:  
KS 34RKSA KS 36RLSA



**Option 7M430**  
Cabover slideout with dresser  
Available in Model  
KS 36RKWB



**Option 7M430**  
Cabover slideout with dresser  
Available in Models:  
KS 34RKSA KS 36RLSA



**Option 7K030**  
Honeymoon suite  
Available in Model:  
KS 36RKWB



**Option 7K030**  
Honeymoon suite  
Available in Models:  
KS 34RKSA KS 36RLSA



**Option 7K990**  
Double sliding doors with honeymoon suite  
when used with option 7K030  
Available in Model: KS 36RKWB



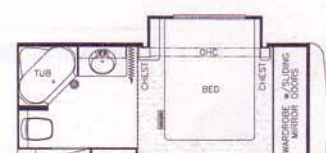
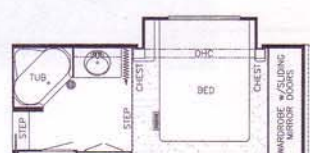
**Option 7K990**  
Double sliding doors with honeymoon suite  
when used with option 7K030  
Available in Models:  
KS 34RKSA KS 36RLSA



**Option 7K990**  
Double sliding doors with cabover slideout  
when used with option 7M610  
Available in Model: KS 36RKWB



**Option 7K990**  
Double sliding doors with cabover slideout  
when used with option 7M610  
Available in Models:  
KS 34RKSA KS 36RLSA





# 1997 • Custom Optional Floorplans



**Option 7K990**  
Double sliding doors  
Available in Models:  
KS 34RKSA KS 36RLSA



**Option 7K990**  
Double sliding doors with twin beds  
when used with option 7K080  
Available in Model:  
KS 36RKWB



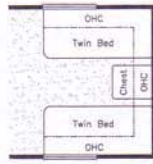
**Option 7K990**  
Double sliding doors  
Available in Model:  
KS 36RKWB



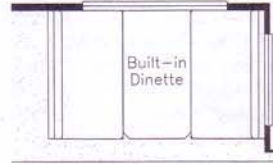
**Option 7K990**  
Double sliding doors with twin beds  
when used with option 7K080  
Available in Models:  
KS 34RKSA KS 36RLSA



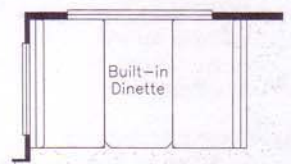
**Option # 7K550**  
Rear bunk delete  
Available in Model:  
KS 36LSDB



**Option 7K080**  
Twin beds  
Available in All Models:



**Option 7K270**  
Front built-in dinette  
Available in Models: KS 34RLDK  
KS 34RLWB KS 36RLSA



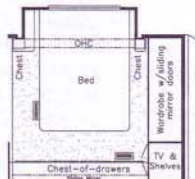
**Option 7K270**  
Rear built-in dinette  
Available in Models: KS  
29WRKD KS 32RKSA KS  
32RKWB  
KS 33WRKD KS 34RKSA  
KS 36LSDB KS 36RKWB



**Option 7K350**  
Honeymoon suite  
Available in Models:  
KS 32RKWB KS 33WRKD  
KS 34 RLDK KS 34 RLWB



**Option 7M380**  
Cabover slideout  
Available in Models:  
KS 32RKWB KS 33WRKD  
KS 34 RLDK KS 34 RLWB



**Option 7M650**  
Cabover slideout  
with dresser  
Available in Models:  
KS 32RKWB KS 33WRKD  
KS 34 RLDK KS 34 RLWB



**Option 7M660**  
Cabover slideout with  
vanity center  
Available in Models:  
KS 32RKWB KS 33WRKD  
KS 34 RLDK KS 34 RLWB



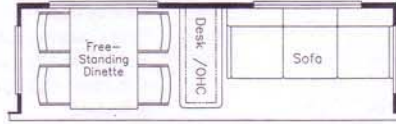
**Option 7K040**  
Side aisle wardrobe delete  
Available in Models:  
KS 34RKSA KS 36RLSA



**Option 7K480**  
Front sofa storage  
Available in Models:  
KS 29WRKD KS 32RKSA  
KS 32RKWB KS 33WRKD  
KS 34RKSA KS 36LSDB  
KS 36RKWB



**Option 7K480**  
Rear sofa storage  
Available in Models:  
KS 34RLDK KS 34 RLWB  
KS 36 RLSA



**Option 7K860**  
Desk and overhead  
cabinet in slideout  
Available in Model:  
KS 36RKWB



**Option 7P160**  
unenclosed stool room  
Available in Model:  
KS 36RKWB



**Option 7P180**  
Enclosed stool  
room with shower  
Available in Models:  
KS 33WRKD  
KS 34RLDK  
KS 34 RLWB

## Kountry Star® 5th Wheel Specifications

Unit	No. Axles	Axle Cap.	Tire	GAWR	GVWR	Approx. Length	Approx. Height	Approx. Width	Approx. Weight	Approx. Hitch Weight	Fresh Water Cap.	Grey Water Cap.	Sewage Water Cap.	Approx. Hitch Height	Heat Cap.
KS FW 29WRKD	2	5,200	235-85 R 16 E	5,200	11,500	30'-0"	11'-10"	101"	8,800	1,500	100 Gal	50 Gal	42 Gal	47"	30,000
KS FW 32RKSA	2	6,000	235-85 R 16 E	6,000	12,500	33'-4"	11'-10"	101"	9,465	1,700	100 Gal	50 Gal	42 Gal	47"	35,000
KS FW 32RKWB	2	6,000	235-85 R 16 E	6,000	12,500	33'-4"	11'-10"	101"	9,450	1,700	100 Gal	50 Gal	42 Gal	47"	35,000
KS FW 33WRKD	2	6,000	235-85 R 16 E	6,000	12,500	34'-1"	11'-10"	101"	9,250	1,575	100 Gal	50 Gal	42 Gal	47"	40,000
KS FW 34RKSA	2	6,000	235-85 R 16 E	6,000	12,500	35'-4"	11'-10"	101"	10,125	2,225	100 Gal	50 Gal	42 Gal	47"	40,000
KS FW 34RLDK	2	6,000	235-85 R 16 E	6,000	12,500	35'-4"	11'-10"	101"	10,300	1,950	100 Gal	50 Gal	42 Gal	47"	40,000



# Kountry Star® Fifth Wheel

## 1997 • Optional Features

### Option Packages

H7 XL Preferred Equipment	197 lbs.
R7 XL Preferred Equipment	219 lbs.

### Air Conditioning & Heating

Air Conditioner Brisk Air 13.5M BTU (extra)	95 lbs.
Air Conditioner Brisk Air 15M BTU (extra)	100 lbs.
Air Conditioner Brisk Air 15M BTU in place of R7 Air	5 lbs.
Air Conditioner Central Brisk Air 13.5M BTU (1)	100 lbs.
LP Gas Bottles 2-40# with Auto Regulator & See Level Gauges on Slides	20 lbs.
LP Gas Bottles 40# with See Level Gauges	15 lbs.
LP Leak Detector	1 lbs.

### Appliances & Accessories

Basic Sony Satellite Digital Receiver (does not include programming)	37 lbs.
Ceiling Fan	10 lbs.
Ceiling Fan Prep (CSA Approved for Canadian dealers only)	4 lbs.
Icemaker Added to Dometic Refrigerator	5 lbs.
Microwave Oven 22"	31 lbs.
Microwave Oven Convection 30" with 3-Burner Hot Plate	42 lbs.
Microwave Oven Non-Convection 30" 89 lbs.	
Refrigerator Dometic 7732 Side by Side in place of Package R7 (34 RLDK, 34 RLWB, 36 LSDB, 36 RKWB, 36 RLSA)	47 lbs.
Refrigerator Dometic Royale 3862	19 lbs.
Refrigerator Front Hardwood Raised Panel	19 lbs.
Satellite Dish (Winegard) with Manual System, does not include DSS Receiver	13 lbs.
Satellite Dish Prep Only (Winegard) with Phone/TV Jack & 110 Volt Recept	2 lbs.
Stereo AM/FM Cassette with Clock	3 lbs.
Telephone Connection with 1 Phone Jack	1 lbs.
Telephone Jack Interior (extra)	1 lbs.
TV Jack (extra)	1 lbs.
TV Jack for Exterior Use on Door Side	1 lbs.
VCR Prep with TV Video Switch	1 lbs.
VCR with TV Video Switch & VCR Prep	12 lbs.
Washer/Dryer Prep (33 WRKD, 34 RKSA, 34 RLDK, 34 RLWB, 36 RKWB, 36 RLSA)	22 lbs.
Washer/Dryer Sears (33 WRKD, 34 RKSA, 34 RLDK, 34 RLWB, 36 RKWB, 36 RLSA)	232 lbs.
Water Heater 10 Gallon Gas/Electric with Reigniter	13 lbs.

### Cabinets & Furniture

Bed Twins (not available with cabover slideout)	102 lbs.
---	----------

### Cabinets & Furniture (continued)

Built in Dinette with Drawers in place of Free Standing Table/Chairs	23 lbs.
Cabinetry Bleached Oak with Raised Panel Doors	0 lbs.
Chair End Table	9 lbs.
Chair Flexsteel Petite Glider/Recliner	45 lbs.
Chair Flexsteel Swivel Glider/Recliner	60 lbs.
Chair Flexsteel Swivel Rocker	43 lbs.
Countertop Extension (36 LSDB)	7 lbs.
Delete Complete Rear Bedroom & Bath (33 DBSL)	-354 lbs.
Delete Complete Rear Room (36 LSDB)	-354 lbs.
Dinette Table Hidden Leaf in place of Free Standing Table	50 lbs.
Drawers with Metal Guides & Side Rollers	5 lbs.
Sliding Doors in Bedroom (34 RKSA, 36 RLSD, 36 RKWB) (not available with option 7K040)	83 lbs.
Honeymoon Suite Bedroom (33 WRKD, 32 RKWB, 34 RLDK, 34 RLWB)	120 lbs.
Honeymoon Suite Bedroom (34 RKSA, 36 LSDB, 36 RKWB, 36 RLSD)	129 lbs.
Honeymoon Suite Bedroom with Side Aisle Wardrobe Delete (34 RKSA, 36 RLSD)	272 lbs.
Padded Vanity Stool	20 lbs.
Pull Out Pantry (except 29 WRKD, 32 RKWB, 32 RKSA, 33 WRKD, 34 RKSA)	10 lbs.
Side Aisle Wardrobe Delete (34 RKSA, 36 RLSD)	137 lbs.
Sofa Cocktail Table	75 lbs.
Sofa Flexsteel Easybed with Built-in Drawer	20 lbs.
Sofa Flexsteel Hide-A-Bed in place of Standard	75 lbs.
Sofa Storage Cabinet	37 lbs.

### Chassis Features

Spare Tire (16" E range) (except 36 LSDB, 36 RKWB, 36 RLSD)	90 lbs.
Spare Tire (16" G range) (36 LSDB, 36 RKWB, 36 RLSD)	90 lbs.
Suspension Mor-Ryde with Heavy Duty Shock Absorbers	25 lbs.

### Electrical Features

Battery, Disconnect Switch	1 lbs.
Battery, Thermoil (extra)	42 lbs.
Converter 75 AMP with Charger	-14 lbs.
Electrical Service 50 AMP	9 lbs.
Flexible 50 AMP Power Cord	0 lbs.
Generator 6.5 KW Onan with Automatic Changeover and Battery	297 lbs.
Generator LP Gas Conversion	5 lbs.
Generator Prep (110V wire,	

remote start wire) 1 lbs.

### Electrical Features (continued)

Lighting Fluorescent Recessed in Ceiling and Overhead Cabinets	1 lbs.
Lights Exterior Security (one each side)	2 lbs.
Lights Exterior Security (two each side)	4 lbs.
Recept 110 Volt Extra	1 lbs.
Recept 12 Volt Extra	1 lbs.
Solar Prep (12 volt wire from roof to battery compartment)	1 lbs.

### Exterior Features

12 Volt Powered Front Jacks	10 lbs.
Hitch Plate and Bracket 21000#	
Jacks Stabilizers Extra	40 lbs.
Roof Rack & Ladder	4 lbs.
Roof Rubber	8 lbs.
Slideout in Cabover with 80" Bed (32 RKWB, 33 WRKD, 34 RLDK, 34 RKWB)	355 lbs.
Slideout in Cabover with 80" Bed (34 RKSA, 36 RLSD, 36 RKWB)	348 lbs.
Slideout in Cabover with 80" Bed and Dresser Center (32 RKWB, 33 WRKD, 34 RLDK, 34 RLWB)	453 lbs.
Slideout in Cabover with 80" Bed and Dresser Center (34 RKSA, 36 RLSD, 36 RKWB)	447 lbs.
Slideout in Cabover with 80" Bed and Side Aisle Wardrobe Delete (34 RKSA, 36 RLSD)	491 lbs.
Slideout in Cabover with 80" Bed and Vanity Center (32 RKWB, 33 WRKD, 34 RLDK, 34 RLWB)	444 lbs.
Slideout in Cabover with 80" Bed and Vanity Center (34 RKSA, 36 RLSD, 36 RKWB)	444 lbs.
Slideout in Cabover with 80" Bed, Side Aisle Wardrobe and Dresser Center (34 RKSA, 36 RLSD) Delete	616 lbs.
Slideout in Cabover with 80" Bed, Side Aisle Wardrobe and Vanity Center (34 RKSA, 36 RLSD) Delete	613 lbs.
Snaps for Fifth Wheel Jacks	1 lbs.

### Interior Features

Entrance Door Trimmed with Hardwood	1 lbs.
Floor Covering, Carpet in Bath	30 lbs.
Floor Covering, Hardwood Plank in Kitchen and Foyer Area	30 lbs.
State Seal	0 lbs.

### Plumbing / Bath Features

Enclosed Stool Room with Corner Shower (33 WRKD, 34 RLDK, 34 RLWB)	9 lbs.
Sewage Holding Tank Rinse	1 lbs.
Shower Exterior Hook Up (on off door side)	2 lbs.
Stool China with Spray Attachment	31 lbs.
Stool Room Unenclosed	-27 lbs.
Water Filtering System with Drink	

Dispenser (kitchen) 5 lbs.

### Construction Features

Insulation Polar Pak (R19 fiberglass in floor and roof)	5 lbs.
Structure, Aluminum Sidewalls/Roof with Laminated 5/8" Bead Foam	-8 lbs.

### Windows, Awnings, Vents

Awning Side A & E 8500	110 lbs.
Awning Side A & E 9000	128 lbs.
Awning Window A & E 8500	5 lbs.
Awning Window A & E 9000	5 lbs.
Door Bell	2 lbs.
Exterior Lighted Acrylic Assist Handle (at main entrance door)	1 lbs.
Skylight in Bathroom	2 lbs.
Vent 12 Volt Fantastic with Rain Sensor	11 lbs.
Vent 12 Volt with Wall Switch, Extra	5 lbs.
Window Safety Glass Dark Tinted	0 lbs.
Windows Safety Glass Storms	30 lbs.

### Option Packages

#### H7 XL Preferred Equipment

Complexion Light in Bathroom with Wall Switch	
Convenience Light at Main Entrance Door Step	
Convenience Light in Each Wardrobe	
Full Length Dressing Mirror	
High Density Carpet Pad	
Interior Assist Handle at Main Entrance Door	
Oak Hardwood Raised Panel Cabinet Doors	
Drawers with Metal Guides & Side Rollers	
Lifts for Convenient Storage Under Fixed Beds	
Bedsprad Quilted with Reversed Shams & Accent Pillow	
Decorative Wall Clock	

#### R7 XL Preferred Equipment

Air Conditioner Central Brisk Air 13.5M BTU (1)	
Range Cover	
Tub/Shower Fiberglass with Enclosure	
Water Heater 10 Gallon Gas/Electric with Reigniter	
Stereo AM/FM Cassette with Clock	
Telephone Connection with 1 Phone Jack	
Roof Rack & Ladder	
12 Volt Powered Front Jacks	
Insulation Polar Pak (R19 fiberglass in floor and roof)	
Bright Lug Nuts	
Converter 75 AMP with Charger	
Refrigerator Dometic Royale 3862	





# Kountry Star® Fifth Wheel

## 1997 • Standard Features

### Air Conditioning & Heating

Air Conditioner Prep (110 volt wiring)  
Heat In Floor Ducted  
LP Gas Bottles 2-30# with Automatic Regulator

### Appliances & Accessories

Cable TV Connection  
Microwave Prep  
Range Hood with Light & Fan  
Range Wedgewood 3-Burner with Black Glass Oven Door  
Refrigerator Dometic Royale 3662  
Stereo Prep (antenna, speaker wire & 12 volt wire)  
TV Antenna with Power Booster & 2 Jacks  
Water Heater 6 Gallon Gas

### Cabinets & Furniture

Bed Queen (60"x75")  
Dinette Table with Hardwood Top and 4 Chairs (floorplans with slideout)  
Molded Silverware Divider Tray  
Sofa Flexsteel Easybed

### Chassis Features

Easy Lube Equalizers  
Frame Size 12" I-Beam with Maximum Storage  
Shock Absorbers  
Skid Bars for Rear Bottom Protection

### Electrical Features

Battery, Thermolite (12 volt)  
Converter 50 AMP with Charger  
Electrical Power to Power Slideout 110 & 12 Volt  
Electrical Service 30 AMP  
Recepts 110 Volt with Ground Fault Interrupter (interior & exterior)

### Exterior Features

Exterior Front & Rear Gel-Coated Fiberglass End Caps  
Exterior Sides Filton  
Jacks Stabilizer (1 pair)  
Roof One Piece Aluminum  
Slideout Large (see floorplans for availability and layout)

### Interior Features

Ceiling Woven Soft Touch  
Floor Covering, Carpet Staintech, 45 oz 100% Nylon Plush Saxony  
Floor Covering, Vinyl in Kitchen, Bath and Foyer  
Sink Covers, Two  
Smoke Detector & 5 BC Fire Extinguisher  
Window Treatment Day/Night Pleated Shades & Lined Drapes  
Window Treatment Mini Blinds (kitchen)

### Plumbing / Bath Features

Bath Accessories White (2 towel bars, 1 tissue holder & robe hook)  
Monitor Panel  
Stool Aqua Magic IV  
Winterize Convenience Package (with water heater bypass)

### Construction Features

Insulation Fiberglass R7 Sidewalls, Floor & Roof  
Rear Bumper with Slide Out Tray Structure, Wood (screwed & glued)  
Underbelly Enclosed with Insulation & Molded Rear Bumper

### Windows, Awnings, Vents

Step Triple  
Vent 12 Volt in Bath Area with Wall Switch  
Windows Radius Torque

## 1997 • Floorplans



KS 29WRKD



KS 34RKSA



KS 32RKSA



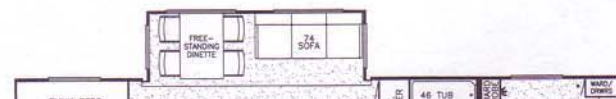
KS 34RLDK



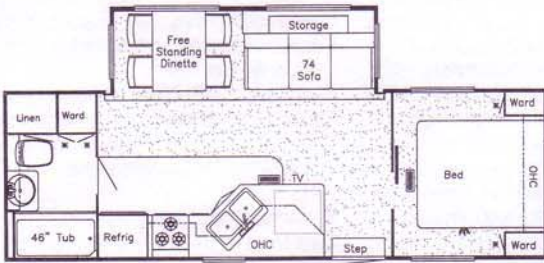
KS 32RKWB



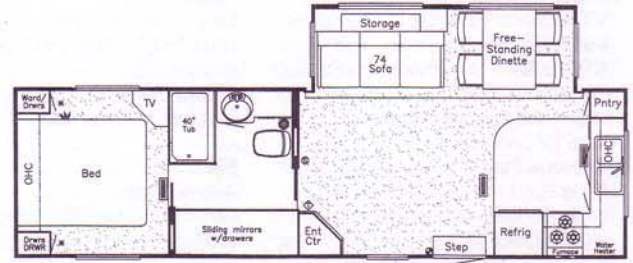
KS 34RLWB



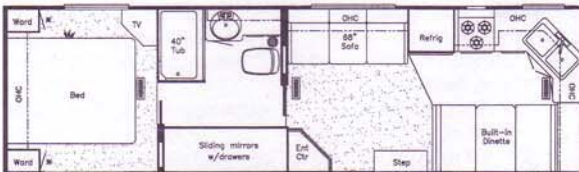
## 1997 • Floorplans



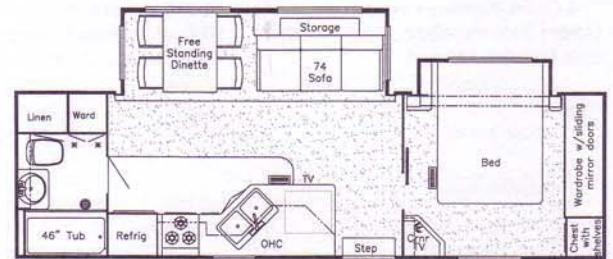
KS 29RFBF



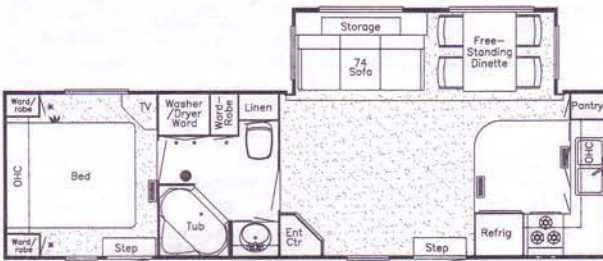
KS 32FKWS



KS 30FKRB



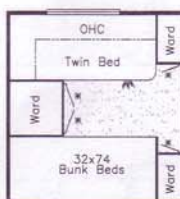
KS 32RBSB



KS 32CFKS

Prices, specifications and Floorplans are subject to change at Newmar's discretion without prior written notice or obligation. Some Floorplans may show optional chairs or end tables. See your Dealer for availability.

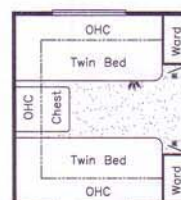
## 1997 • Custom Optional Floorplans



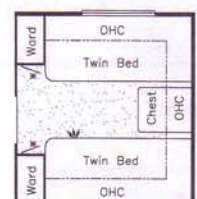
Option 7K120  
Rear twin beds



Option 7K120  
Front twin beds



Option 7K080  
Rear twin beds



Option 7K080  
Front twin beds



# Kountry Star® Travel Trailer

## 1997 • Standard Features

### Air Conditioning & Heating

Air Conditioner Prep (110 volt wiring)  
LP ABS Gas Bottle Cover (30# bottles)  
LP Gas Bottles 2-30# with Automatic Regulator

### Appliances & Accessories

Cable TV Connection  
Microwave Prep  
Range Hood with Light & Fan  
Range Wedgewood 3-Burner with Black Glass Oven Door  
Refrigerator Dometic Royale 3662  
Stereo Prep (antenna, speaker wire & 12 volt wire)  
TV Antenna with Power Booster & 2 Jacks  
Water Heater 6 Gallon Gas

### Cabinets & Furniture

Bed Queen (60" x 75")  
Dinette Table with Hardwood Top & 4 Chairs (floorplans with slideout)  
Molded Silverware Divider Tray  
Sofa Flexsteel Easybed

### Chassis Features

Easy Lube Equalizers  
Frame Size 12" I-Beam with Maximum Storage  
Safety Chains  
Shock Absorbers  
Skid Bars for Rear Bottom Protection

### Electrical Features

Battery, Thermolite (12 volt)  
Converter 50 AMP with Charger  
Electrical Power to Power Slideout 110 & 12 Volt  
Electrical Service 30 AMP  
Recept 110 Volt with Ground Fault Interrupter (interior & exterior)

### Exterior Features

Exterior Front & Rear Gel-Coated  
Fiberglass End Caps  
Exterior Sides Filon  
Roof One Piece Aluminum  
Slideout Large (see floorplans for availability

& layout)

### Interior Features

Ceiling Woven Soft Touch  
Floor Covering, Carpet Staintech, 45 oz.  
100% Nylon Plush Saxony  
Floor Covering, Vinyl in Kitchen, Bath and Foyer  
Sink Covers, Two  
Smoke Detector & 5 BC Fire Extinguisher  
Window Treatment Day/Night  
Pleated Shades & Lined Drapes  
Window Treatment Mini Blinds (kitchen)

### Plumbing / Bath Features

Bath Accessories White (2 towel bars, 1 tissue holder & robe hook)  
Monitor Panel  
Stool Aqua Magic IV  
Winterize Convenience Package (with water heater bypass)

### Construction Features

Insulation Fiberglass R7 Sidewalls, Floor & Roof  
Structure, Wood (screwed & glued)  
Underbelly Enclosed with Insulation & Molded Rear Bumper

### Windows, Awnings, Vents

Step Triple  
Vent 12 Volt in Bath Area with Wall Switch  
Windows Radius Torque

## 1997 • Optional Features

H7 XL Preferred Equipment	197 lbs.
R7 XL Preferred Equipment	219 lbs.

### Air Conditioning & Heating

Air Conditioner Brisk Air 13.5M BTU (extra) 95 lbs.  
Air Conditioner Brisk Air 15M BTU (extra) 100 lbs.  
Air Conditioner Brisk Air 15M BTU in place of R7 Air 5 lbs.  
Air Conditioner Central Brisk Air 13.5M BTU (1) 100 lbs.  
LP Gas Bottles 40# with See Level Gauges 15 lbs.  
LP Leak Detector 1 lbs.

### Appliances & Accessories

Basic Sony Satellite Digital Receiver (does not include programming) 37 lbs.  
Icemaker Added to Dometic Refrigerator 5 lbs.  
Microwave Oven 22" 31 lbs.  
Microwave Oven Convection 30" with 3 Burner Hot Plate 42 lbs.  
Microwave Oven Non-Convection 30" 89 lbs.  
Refrigerator Dometic Royale 3862 19 lbs.  
Refrigerator Front Hardwood Raised Panel 19 lbs.  
Satellite Dish (Winegard) with Manual System, does not include DSS Receiver 13 lbs.  
Satellite Dish Prep Only (Winegard) with Phone/TV Jack & 110 Volt Recept 2 lbs.

Approx.  
Weight

### Appliances & Accessories (continued)

Stereo AM/FM Cassette with Clock 3 lbs.  
Telephone Connection with 1 Phone Jack 1 lbs.  
Telephone Jack Interior (extra) 1 lbs.  
TV Jack (extra) 1 lbs.  
TV Jack for Exterior Use on Door Side 1 lbs.  
VCR Prep with TV Video Switch 1 lbs.  
VCR with TV Video Switch & VCR Prep 12 lbs.  
Washer/Dryer Prep (30 FKRB, 32 CFKS, 32 FKWS) 22 lbs.  
Washer/Dryer Sears (30 FKRB, 32 CFKS, 32 FKWS) 232 lbs.  
Water Heater 10 Gallon Gas/Electric with Reigniter 13 lbs.

### Cabinets & Furniture

Bed Twins (except 32 RBSB) 102 lbs.  
Built-in Dinette with Drawers in place of Free Standing Table/Chairs 23 lbs.  
Cabinetry Bleached Oak with Raised Panel Doors 0 lbs.  
Chair End Table 9 lbs.  
Chair Flexsteel Petite Glider/Recliner 45 lbs.  
Chair Flexsteel Swivel Glider/Recliner 60 lbs.  
Chair Flexsteel Swivel Rocker 43 lbs.  
Dinette Table Hidden Leaf in place of Free Standing Table 50 lbs.  
Drawers with Metal Guides & Side Rollers 5 lbs.  
Sofa Flexsteel Easybed with Built in Drawer 20 lbs.  
Sofa Flexsteel Hide-A-Bed in place of Standard 75 lbs.

### Chassis Features

Spare Tire & Carrier (16" E range) 90 lbs.  
Spare Tire cover 5 lbs.  
Suspension Mor-Ryde with Heavy Duty Shock Absorbers 25 lbs.

### Electrical Features

Battery, Disconnect Switch 1 lbs.  
Converter 75 AMP with Charger -14 lbs.  
Electrical Service 50 AMP 9 lbs.  
Flexible 50 AMP Power Cord 0 lbs.  
Lighting Fluorescent Recessed in Ceiling and Overhead Cabinets 1 lbs.  
Lights Exterior Security (1 each side) 2 lbs.  
Lights Exterior Security (2 each side) 4 lbs.  
Recept 110 Volt Extra 1 lbs.  
Recept 12 Volt Extra 1 lbs.  
Solar Prep (12 volt wire from roof to battery compartment) 1 lbs.

### Exterior Features

12 Volt Powered Hitch Jack 10 lbs.  
Jacks Stabilizer (2 pairs) 80 lbs.  
Roof Rack & Ladder 4 lbs.  
Roof Rubber 8 lbs.

### Interior Features

Entrance Door Trimmed with Hardwood lbs.  
Floor Covering, Carpet in Bath 30 lbs.  
Floor Covering, Hardwood Plank in Kitchen and Foyer Area 30 lbs.  
State Seal 0 lbs.

### Plumbing / Bath Features

Sewage Holding Tank Rinse 1 lbs.  
Shower Exterior Hook Up (on off door side) 2 lbs.  
Stool China with Spray Attachment 31 lbs.  
Water Filtering System with Drink Dispenser (kitchen) 5 lbs.

### Construction Features

Insulation Polar Pak (R19 fiberglass in floor and roof) 5 lbs.  
Structure, Aluminum Sidewalls/Roof with Laminated 5/8" Bead Foam -8 lbs.

### Windows, Awnings, Vents

Awning Side A & E 8500 110 lbs.  
Awning Side A & E 9000 128 lbs.  
Awning Window A & E 8500 5 lbs.  
Awning Window A & E 9000 5 lbs.  
Door Bell 2 lbs.  
Exterior Lighted Acrylic Assist Handle (at main entrance door) 1 lbs.  
Skylight in Bathroom 2 lbs.  
Vent 12 Volt Fantastic with Rain Sensor 11 lbs.  
Vent 12 Volt with Wall Switch, Extra 5 lbs.  
Window Safety Glass Dark Tinted 0 lbs.  
Windows Safety Glass Storms 30 lbs.

## Kountry Star® Travel Trailer Specifications

Unit	No. Axles	Axle Cap.	Tire	GAWR	GVWR	Approx. Length	Approx. Height	Approx. Width	Approx. Weight	Approx. Hitch Weight	Approx. Fresh Water Cap.	Approx. Grey Water Cap.	Approx. Sewage Cap.	Approx. Heat Cap.
16 FT. 6000	1	4,000	ST-225-75-R15	4,000	4,000	30' 4"	4' 0"	6' 0"	7,000	650	40 G	50 G	40 G	13,000



# 1997 • Floorplans



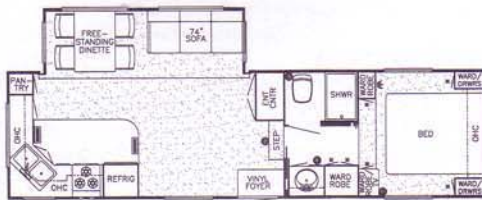
AS 28WRKD



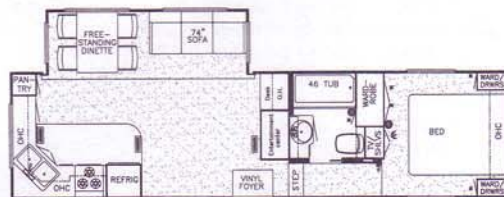
AS 28RBWS



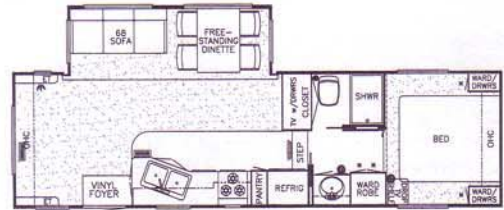
AS 29WRKD



AS 31RKWB



AS 32RKSA



AS 30RLWB



AS 32RKWB



AS 33DBLS



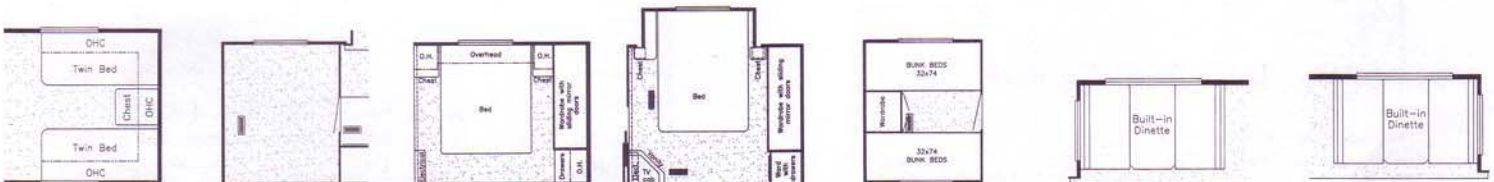
AS 33WRKD



AS 36DBLS

Prices, specifications and floorplans are subject to change at Newmar's discretion without prior written notice or obligation. Some floorplans may show optional chairs or end tables. See your Dealer for availability.

## Custom Optional Floorplans





# American Star® Fifth Wheel

## 1997 • Standard Features

### Air Conditioning & Heating

Air Conditioner Prep (110 volt wiring)  
Heat In Floor Ducted  
LP Gas Bottles 2-30# with Automatic Regulator

### Appliances & Accessories

Microwave Prep  
Range Cover  
Range Hood with Light & Fan  
Range Wedgewood 3-Burner with Oven  
Refrigerator Dometic Double Door 2652.2  
Stereo Prep (antenna, speaker wire & 12 volt wire)  
TV Antenna with Power Booster & 2 Jacks  
Water Heater 6 Gallon Gas/Electric with Reigniter

### Cabinets & Furniture

Dinette Table with Hardwood Top and 4 Chairs (floorplans with slideout)  
Lifts for Convenient Storage Under Fixed Beds  
Molded Silverware Divider Tray  
Sofa Flexsteel Easybed

### Chassis Features

Frame Size 12" I-Beam (floorplans with slideout)  
Skid Bars for Rear Bottom Protection

### Electrical Features

Battery, Thermoil (12 volt)  
Converter 40 AMP with Charger  
Electrical Power to Power Slideout 110 & 12 Volt  
Electrical Service 30 AMP  
Recepts 110 Volt with Ground Fault Interrupter (interior & exterior)

### Exterior Features

Bumper with Sewer Hose Storage  
Exterior Sides Ribbed Aluminum  
Roof One Piece Aluminum  
Slideout Large (see floorplans for availability & layout)

### Interior Features

Bedsprad Quilted with Reversed Sham (1)  
Floor Covering, Carpet with Pad Living Room & Bedroom  
Floor Covering, Vinyl in Kitchen, Bath and Foyer  
Sink Cover, One  
Smoke Detector & 5 BC Fire Extinguisher  
Window Treatment Mini Blinds (throughout)

### Plumbing / Bath Features

Bath Accessories White (2 towel bars, 1 tissue holder)

### Plumbing / Bath Features (continued)

Monitor Panel  
Stool Aqua Magic IV  
Tub/Shower Surround with Enclosure  
Winterize Convenience Package (with water heater bypass)

### Construction Features

Insulation Fiberglass R7 Sidewalls, Floor and Roof  
Underbelly Enclosed with Fiberglass Insulation (floorplans with slideout)

### Windows, Awnings, Vents

Radius Entrance Door with Deadbolt  
Vent 12 Volt in Bath area with Wall Switch  
Windows Radius Torque

## 1997 • Optional Features

A7 Preferred Equipment	150 lbs.
C7 XL Interior Preferred Equipment	52 lbs.
M7 XL Exterior Preferred Equipment	275 lbs.

### Air Conditioning & Heating

Air Conditioner Ducted 13.5M in place of A7 Air	-52 lbs.
Air Conditioner Ducted 15M in place of A7 Air	-52 lbs.

### Appliances & Accessories

Ceiling Fan	10 lbs.
Ceiling Fan Prep (CSA approved for Canadian Dealers Only)	4 lbs.
Refrigerator Dometic Double Door 2852.2	21 lbs.
Telephone Connection with 1 Phone Jack	1 lbs.
TV Jack (Extra)	1 lbs.
TV Jack for Exterior Use on Door Side	1 lbs.
Washer/Dryer Prep (33 DBLS, 33 WRKD, 36 DBLS)	22 lbs.
Washer/Dryer Sears (33 DBLS, 33 WRKD, 36 DBLS)	232 lbs.

### Cabinets & Furniture

Bed Twins (not available with cabover slideout)	102 lbs.
---	----------

### Cabinets & Furniture (continued)

Built In Dinette in place of Free Standing Table/Chairs	3 lbs.
Bunk House Bedroom (33 DBLS, 36 DBLS)	96 lbs.
Cabinetry Bleached Oak with Raised Panel Doors	0 lbs.
Chair Flexsteel Petite Glider/Recliner	45 lbs.
Chair Flexsteel Swivel Rocker	43 lbs.
Countertop Extension (28 RBWS, 33 DBLS, 36 DBLS)	7 lbs.
Delete Complete Rear Bedroom & Bath (33 DBLS, 36 DBLS)	-354 lbs.
Honeymoon Suite Bedroom (32 RKWB, 33 WRKD)	120 lbs.
Sofa Flexsteel Hide-A-Bed in place of Standard	75 lbs.

### Chassis Features

Shock Absorbers	2 lbs.
Spare Tire & Carrier (16" E range, available with 16" tires)	90 lbs.
Spare Tire & Carrier 15" (except 36 DBLS)	70 lbs.
Tires 16" E Range Radials, Set of 4 (except 36 DBLS)	210 lbs.

### Electrical Features

Converter 75 AMP with Charger	-14 lbs.
Electrical Service 50 AMP	9 lbs.
Lights Exterior Security (1 each side)	2 lbs.
Lights Exterior Security (2 each side)	4 lbs.

### Exterior Features

12 Volt Powered Front Jacks	10 lbs.
Exterior Sides Filton	7 lbs.
Roof Rack & Ladder	4 lbs.
Roof Rubber	8 lbs.
Slideout in Cabover with 16" E Range Tires (32 RKWB, 33 WRKD)	355 lbs.

### Interior Features

Floor Covering, Hardwood Plank in Kitchen	30 lbs.
Floor Covering, Vinyl throughout (not available in cabover)	-20 lbs.
State Seal	0 lbs.

### Plumbing / Bath Features

Sewage Holding Tank Rinse	1 lbs.
Shower Exterior Hook Up (on off door side)	2 lbs.
Tub/Shower Fiberglass	75 lbs.

### Windows, Awnings, Vents

Skylight in Bathroom	2 lbs.
Vent 12 Volt Fantastic with Rain Sensor in Kitchen	11 lbs.
Vent Non-Power	3 lbs.

## Option Packages

### A7 Preferred Equipment

Air Conditioner 13.5 BTU Brisk Air  
Bed Queen (60"x75")  
Cable TV Connection  
Converter 75 AMP with Charger  
Microwave Oven 22"  
Rear Awning (on floorplans with rear window)  
Side Awning A & E Sunchaser  
Stereo AM/FM Cassette with Clock

### C7 XL Interior Preferred Equipment

Complexion Light in Bathroom with Wall Switch  
Decorative Wall Clock  
Decorative Wall Lights in Bedroom  
Lavatory Faucet Single Handle  
Oak Hardwood Raised Panel Overhead Cabinet Doors  
Refrigerator Front Hardwood Raised Panel  
Sofa Throw Pillows

### M7 XL Exterior Preferred Equipment

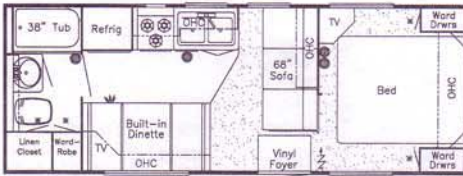
Bumper Cover Aluminum  
Decorative White Lug Nut Covers  
Exterior Gel-Coated Fiberglass End Caps  
Insulation Polar Pak (R11 fiberglass Roof)  
Stabilizer Jacks (1 pair FW/2 pair TT)

## American Star® 5th Wheel Specifications

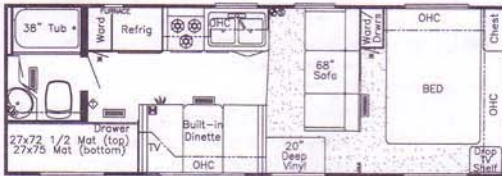
Unit	No. Axles	Axle Cap.	Tire	GAWR	GVWR	Approx. Length	Approx. Height	Approx. Width	Approx. Weight	Approx. Hitch Weight	Fresh Water Cap.	Grey Water Cap.	Sewage Cap.	Approx. Hitch Height	Heat Cap.
AS FW 28RBWS	2	5,200	225-75 R 15 D	5,000	11,500	28'-8"	11'-10"	96"	7,875	1,530	42 Gal	42 Gal	42 Gal	46"	30,000
AS FW 28WRKD	2	5,200	225-75 R 15 D	5,000	11,500	28'-8"	11'-10"	96"	7,850	1,400	42 Gal	42 Gal	42 Gal	46"	30,000
AS FW 29WRKD	2	5,200	225-75 R 15 D	5,000	11,500	29'-8"	11'-10"	96"	8,075	1,450	42 Gal	42 Gal	42 Gal	46"	30,000
AS FW 30RLWB	2	5,200	225-75 R 15 D	5,000	11,500	30'-2"	11'-10"	96"	8,275	1,490	42 Gal	42 Gal	42 Gal	46"	35,000
AS FW 31RKWB	2	5,200	225-75 R 15 D	5,000	11,500	31'-3"	11'-10"	96"	8,350	1,500	42 Gal	42 Gal	42 Gal	46"	35,000



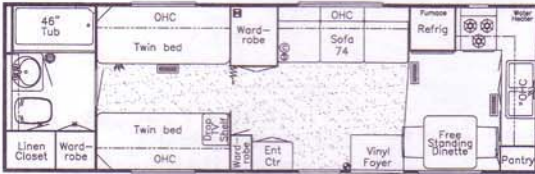
## 1997 • Floorplans



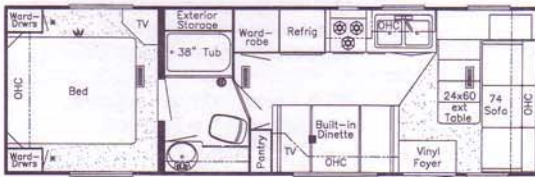
AS 25' RB



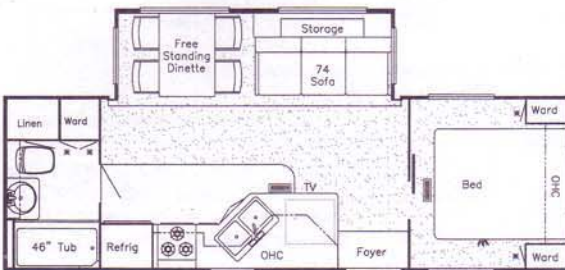
AS 26' DB



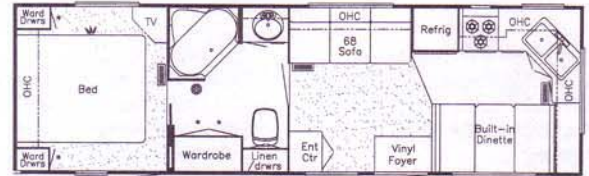
AS 28' RBTB



AS 28' WCB



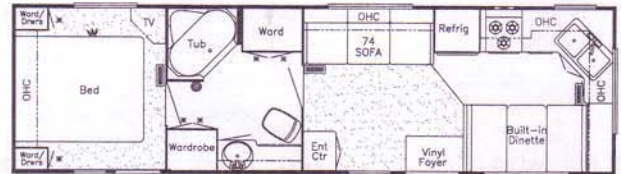
AS 29' RBFB



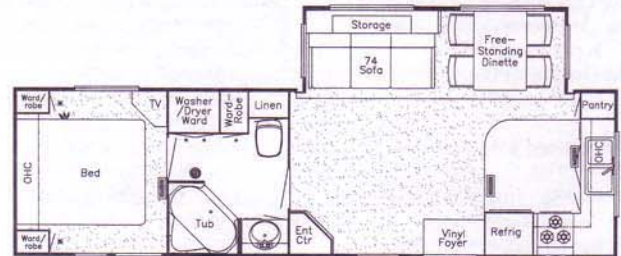
AS 30' FKL B



AS 30' FKRB



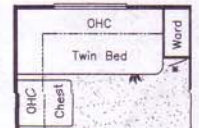
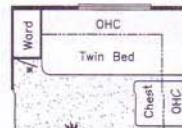
AS 32' AK



AS 32' CFKS

Prices, specifications and floor plans are subject to change at Newmar's discretion without prior written notice or obligation. Some floor plans may show optional chairs or end tables. See your Dealer for availability.

## 1997 • Custom Optional Floorplans





# American Star® Travel Trailer

## 1997 • Standard Features

### Air Conditioning & Heating

Air Conditioner Prep (110 volt wiring)  
LP ABS Gas Bottle Cover (30# bottles)  
LP Gas Bottles 2-30# with Automatic Regulator

### Appliance & Accessories

Microwave Prep  
Range Cover  
Range Hood with Light & Fan  
Range Wedgewood 3-Burner with Oven  
Refrigerator Dometic Double Door 2652.2  
Stereo Prep (antenna speaker wire & 12 volt wire)  
TV Antenna with Power Booster & 2 Jacks  
Water Heater 6 Gallon Gas/Electric with Reigniter

### Cabinets & Furniture

Dinette Table with Hardwood Top and 4 Chairs (floorplans with slideout)  
Lifts for Convenient Storage Under Fixed Beds  
Molded Silverware Divider Tray  
Sofa Flexsteel Easybed

### Chassis Features

Frame Size 12" I-Beam (29 RBFB, 32 CFKS)  
Safety Chains  
Skid Bars for Rear Bottom Protection

### Electrical Features

Battery, Thermoil (12 volt)  
Converter 40 AMP with Charger  
Electrical Power to Power Slideout 110 & 12 Volt  
Electrical Service 30 AMP  
Recepts 110 Volt with Ground Fault Interrupter (interior & exterior)

### Exterior Features

Bumper with Sewer Hose Storage  
Exterior Sides Ribbed Aluminum  
Roof One Piece Aluminum  
Slideout Large (see floorplans for availability & layout)

### Interior Features

Bedsprad Quilted with Reversed Sham (1)  
Floor Covering, Carpet with Pad Living Room Bedroom  
Floor Covering, Vinyl in Kitchen, Bath and Foyer  
Sink Cover, One  
Smoke Detector & 5 BC Fire Extinguisher  
Window Treatment Mini Blinds (throughout)

### Plumbing / Bath Features

Bath Accessories White (2 towel bars, 1 tissue holder)  
Monitor Panel  
Stool Aqua Magic IV  
Tub/Shower Surround with Enclosure  
Winterize Convenience Package (with water heater bypass)

### Construction Features

Insulation Fiberglass R7 Sidewalls, Floor & Roof  
Underbelly Enclosed with Fiberglass Insulation (29 RBFB, 32 CFKS)

### Windows Awnings Vents

Awning Front  
Radius Entrance Door with Deadbolt  
Vent 12 Volt in Bath Area with Wall Switch  
Windows Radius Torque

## 1997 • Optional Features

A7 Preferred Equipment	150 lbs.
C7 XL Interior Preferred Equipment	52 lbs.
M7 XL Exterior Preferred Equipment	275 lbs.

### Air Conditioning & Heating

Air Conditioner Ducted 13.5M in place of A7 Air	-52 lbs.
Air Conditioner Ducted 15M in place of A7 Air	-52 lbs.

### Appliances & Accessories

Refrigerator Dometic Double Door 2852.2	21 lbs.
Telephone Connection with 1 Phone Jack	1 lbs.
TV Jack (extra)	1 lbs.
TV Jack for Exterior Use on Door Side	1 lbs.

### Air Conditioning & Heating (continued)

Washer/Dryer Prep (30 FKRB, 32 CFKS)	22 lbs.
Washer/Dryer Sears (30 FKRB, 32 CFKS)	232 lbs.

### Cabinets & Furniture

Bed Twins (except 25 RB, 26 DB 28 RBTB)	102 lbs.
Built In Dinette in place of Free Standing Table/Chairs	3 lbs.
Bunks Fixed with Twin Beds (except 25 RB, 26 DB, 28 RBTB)	138 lbs.
Cabinetry Bleached Oak with Raised Panel Doors	0 lbs.
Chair Flexsteel Petite Glider/Recliner	45 lbs.
Chair Flexsteel Swivel Rocker	43 lbs.
Countertop Extension (25 RB, 26 DB)	7 lbs.
Sofa Flexsteel Hide-A-Bed in place of Standard (29 RBFB, 32 CFKS)	75 lbs.

### Chassis Features

Shock Absorbers	2 lbs.
Spare Tire & Carrier (16" E range, available with 16" tires)	90 lbs.
Spare Tire & Carrier 15"	70 lbs.
Tires 16" E Range Radials, set of (4) (29 RBFB, 32 CFKS)	210 lbs.

### Electrical Features

Converter 75 AMP with Charger	-14 lbs.
Electrical Service 50 AMP	9 lbs.
Lights Exterior Security (one each side)	2 lbs.
Lights Exterior Security (two each side)	4 lbs.

### Exterior Features

12 Volt Powered Hitch Jack	10 lbs.
Exterior Sides Filton	7 lbs.
Roof Rack & Ladder	4 lbs.
Roof Rubber	8 lbs.

### Interior Features

Floor Covering, Hardwood Plank in Kitchen Area	30 lbs.
Floor Covering, Vinyl Throughout	-20 lbs.
State Seal	0 lbs.

### Plumbing / Bath Features

Sewage Holding Tank Rinse	1 lbs.
Shower Exterior Hook-up (off door side)	2 lbs.
Tub/Shower Fiberglass	75 lbs.

### Construction Features

Radius Bottom Wrap (except 29 RBFB, 32 CFKS)	15 lbs.
--	---------

### Windows, Awnings, Vents

Skylight in Bathroom	2 lbs.
Vent 12 Volt Fantastic with Rain Sensor in Kitchen	11 lbs.
Vent Non-power	3 lbs.

## American Star® Travel Trailer Specifications

Unit	No. Axles	Axle Cap.	Tire	GAWR	GVWR	Approx. Length	Approx. Height	Approx. Width	Approx. Weight	Approx. Hitch Weight	Fresh Water Cap.	Grey Water Cap.	Sewage Water Cap.	Approx. Hitch Height	Heat Cap.
AS TT 25RB	2	3,500	205-75 R 15 C	3,500	7,000	25'-11"	10'-5"	96"	4,720	570	42 Gal	42 Gal	42 Gal	21"	20,000
AS TT 26DB	2	3,500	205-75 R 15 C	3,500	7,900	27'-9"	10'-5"	96"	4,950	550	42 Gal	42 Gal	42 Gal	21"	20,000
AS TT 28RBTB	2	3,500	205-75 R 15 C	3,500	7,900	29'-4"	10'-5"	96"	5,060	650	42 Gal	42 Gal	42 Gal	21"	25,000
AS TT 28WCB	2	3,500	205-75 R 15 C	3,500	7,900	29'-4"	10'-5"	96"	5,200	675	42 Gal	42 Gal	42 Gal	21"	25,000
AS TT 29RBFB	2	5,200	225-75 R 15 D	5,000	10,400	29'-9"	11'-0"	96"	7,500	900	42 Gal	42 Gal	42 Gal	23"	25,000
AS TT 30FKLB	2	5,200	225-75 R 15 D	5,000	10,400	30'-11"	10'-5"	96"	5,580	725	42 Gal	42 Gal	42 Gal	21"	30,000
AS TT 30FKRB	2	5,200	225-75 R 15 D	5,000	10,400	30'-11"	10'-5"	96"	5,600	730	42 Gal	42 Gal	42 Gal	21"	30,000



# American Star Kountry Star

1997 Travel Trailer & 5th Wheel

## Specifications



1997 American Star® Travel Trailer



1997 American Star® 5th Wheel



1997 Kountry Star® Travel Trailer



1997 Kountry Star® 5th Wheel



# American Star Kountry Star

1997 Travel Trailer & 5th Wheel



We invite you to visit  
our new state-of-the-art production facility  
in Nappanee, Indiana.  
Plant tours are offered at 10:00 a.m. and 1:00 p.m.,  
Monday–Friday.



## ***[Newmar Kountry Klub]***

Don't forget to check out the Klub—the Newmar Kountry Klub, that is. All you need for eligibility is to be a proud owner of any of the fine Newmar recreational vehicles.

Compliments of:



**1997 American Star® Travel Trailer**



**1997 American Star® 5th Wheel**



**1997 Kountry Star® Travel Trailer**



**1997 Kountry Star® 5th Wheel**



*An American Tradition of Excellence.*

355 N DELAWARE ST  
PO BOX 30





*An optional dining table and chairs in the slideout section of the American Star® 5th Wheel has a matching love seat that also doubles as a sofa-bed.*



*The optional glider/recliner has been added to the American Star® 5th Wheel for your comfort. Each piece of furniture has been custom designed and coordinated to achieve a look of beauty and distinction.*



*The kitchen in the American Star® 5th Wheel features a large refrigerator/freezer, three-burner stove and top mounted microwave oven, in addition to the many handcrafted, oak-front cabinets and drawers.*







*American Star® travel trailers shine above the rest in providing beauty and comfort, mile after mile. Relax in spacious luxury in the unique Newmar slideout.*

# American Star

1997 Travel Trailer & 5th Wheel

Newmar's "Tradition of Excellence" shines on in 1997 with a beautiful new line-up of American Star® Travel Trailers and 5th Wheels, built tough for the 21st century and beyond.

At Newmar, we continually seek out innovative ways to improve our product. With the availability of Filon® siding on the American Star® 5th Wheel, there's a smooth alternative to consider this year.

We've also added an optional bedroom slideout on the American Star® 5th Wheel which is available in some models. Because there's a wide variety of spacious floorplans for both the Travel Trailer and 5th Wheel product lines, you're sure to find just the right plan to optimize your traveling needs.

To ensure your complete satisfaction, our service department has installed a 24-hour Customer Care line for



*Deep cabinets, handcrafted by Newmar's own team of old-world craftsmen, fill this travel trailer's kitchen with warmth. High quality, built-in appliances compliment the design.*



1997 American Star® Travel Trailer & 5th Wheel





*The slideout in the Kountry Star® 5th Wheel offers Newmar's unique design. Smartly decorated with matching window coverings and two-toned pleated shades, you'll find it hard to believe you ever left home.*



*Cupboard space abounds in the Kountry Star® 5th Wheel kitchen. Features like a double sink, easy to reach switches and plugs and roomy, oak front cabinets make the kitchen beautiful as well as functional.*



*Mirrored back panels reflect the splendor through the grooved glass doors of this large entertainment center, wired to accept a wide variety of optional electronic components like a 32" TV & VCR. The corner desk is a handy way to keep track of your travel itinerary or catch up on letters to home.*



*At the push of a button, your optional bedroom slideout glides into place, revealing the many comforts installed for your convenience. Large, spacious closets provide ample room for your wardrobe and*







The Kountry Star® Travel Trailer offers a variety of beautiful amenities like natural hardwood floors, professionally coordinated interiors and the patented Newmar slideout, large enough for a sofa-bed and dining table for four.

Located just off the bedroom, the Kountry Star's® bathroom has all the conveniences found at home. Full sized fixtures and coordinated wall paneling and floor tile add to its charming attractiveness.



# Kountry Star

1997 Travel Trailer & 5th Wheel

A ride in the country or even across town is a pleasure when you're taking along Newmar's Kountry Star®. As beautiful to live in as they are to look at, rest assured that a Kountry Star® is built to last.

By utilizing the latest technological advances in design and production, Newmar has built a reputation for durable quality that spans over a quarter century. From the rugged 12" I-Beam to the reliable, push button slideout, the Kountry Star® shines above the competition from any angle.

But it doesn't end there. Numerous features are incorporated into each Kountry Star® unit to make it easier to operate and more fun to enjoy. Hose storage, generator access and service panels have all been simplified for ease of use. Of course, basic phone and cable TV jacks are in place; there's even a digital satellite dish if you desire.

Once you hitch up to a Kountry Star®, you've got Newmar's best behind you.



1997 Kountry Star®  
Travel Trailer & 5th Wheel

Beautifully coordinated by a professional decorator, this Kountry Star® 5th Wheel living room/dining room slideout is as pleasing to the eye as it is comfortable.

