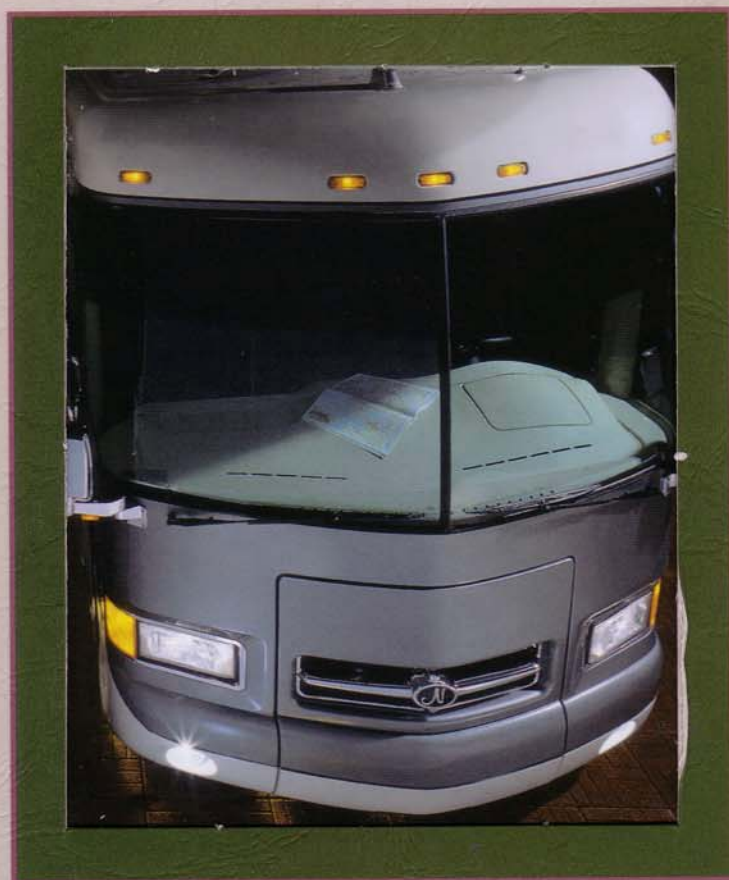


# London Aire

1997 Luxury Coach





# ES

ng Shams & Accent Pillow

Bath And Kitchen Area

h

switch

tinguisher

le)

Pleated

(kitchen)

## FEATURES

ttings

towel ring & robe hook)

tion

ispenser)

andle

Single Handle (Moen)

rior)

ment

nclosure, Curved

ink Dispenser (kitchen)

wind & City Water Hook-Up

e (with water heater bypass)

## URES

erior Roof

ills & Floor R19 Roof

l In Sidewalls & Ceiling

& Roof

## URE

atches & Knife Hinges

ith Raised Panel Cathedral

ner Ultra Suede

Bowl In Bath

itchen

t Top And Four Fully

side Rollers

With

side

Passenger

## CHASSIS FEATURES

- Chassis Spartan K2, 400 HP
- Air Brakes With Auto Slack Adjuster Front & Rear
- Anti Lock Braking System
- Back-Up Alarm
- Cruise Control
- Dash Heater/Air Conditioner High Outputs
- Jacobs Engine Brakes
- Recessed Fuel Fill With Locking Door (one on each side)
- Steering Wheel Tilt & Telescope
- Suspension Self Leveling Air Ride
- Wheels Polished Aluminum

## ELECTRICAL FEATURES

- Battery Disconnect (coach batteries with two switches)
- Battery, Thermoil (6-6 volt)
- Daytime Headlight System
- Electrical Service 50 AMP With Remote Controlled 12 Volt Powered Rewind For Cord
- Generator 10.0 KW Power Tech (diesel) On Sides With Automatic Changeover
- Inverter/Converter (Heart Freedom 25)
- Light Exterior Security (2 on each side)
- Light Spot With Remote Control
- Lights Cornering Assistance
- Lights Docking
- Lights Driving
- Lights In Wardrobes With Automatic Switches
- Lights Interior Courtesy
- Midship Side Turn Signal
- Receipts 110 Volt With Ground Fault Interrupter (interior & exterior)
- Switch For Emergency Chassis Engine Start

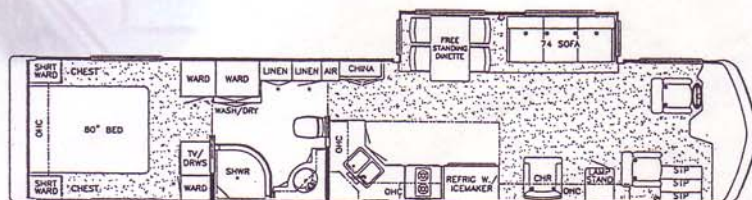
## WINDOWS, AWNING & VENTS

- Awning Side A & E 9000
- Awning Side Tension Rafter
- Awning Side A & E 9000 (on bedroom & slideout windows)
- Door Bell
- Exterior Lighted Acrylic Assist Handle (at the main entrance door)
- Keyless Entry Door
- Step 12 Volt Automatic (double) With Power Step Well Cover
- Vent 12 Volt Fantastic With Rain Sensor In Bath
- Windows Radius Safety Glass Thermopane, Dark Tinted

## OPTIONAL FEATURES

- L-Lounge Leather/Vinyl Inclinor Sofa

Prices, specifications and floor plans are subject to change at Newmar's discretion without prior written notice or obligation. Some floor plans may show optional chairs or end tables. See Dealer for availability.



LB 4257





# STANDARD FEATURES

## AIR CONDITIONING & HEATING

- Air Conditioner Central Duo-Therm Basement Model 27M BTU
- Aqua Hot Hydronic Zone Heating System
- LP Gas Tank 42 Gallons
- LP Leak Detector

## APPLIANCES & ACCESSORIES

- Carbon Monoxide Detector
- CB Radio
- Cellular Telephone Antenna
- Coffee Maker
- Digital Compass And Thermometer
- Freezer Norcold AC/DC (on slides) In Exterior Storage Compartment
- Horn (air)
- Microwave Oven Convection 30"
- Portable Vacuum Range Cover Laminated With Matching Countertop Material
- Range Recessed Gaganau 2-Burner Hot Plate
- Rear View Monitor System
- Refrigerator Domestic Side By Side 7732 With Icemaker
- Refrigerator Front Framed Hardwood Raised Panel
- Remote CD Player With Amplifier
- Safe
- Satellite Dish (18")
- Security System
- Stereo AM/FM Cassette With Clock
- Stereo AM/FM Cassette With Clock (bedroom) & Alarm
- Telephone Hookup With 2 Jacks
- TV Antenna With Power Booster 2 jacks (low profile)
- TV Cable Ready
- TV Color 19" (in bedroom)
- TV Color 27" Stereo TV Jack For Exterior Use On Door Side
- TV Video Switch With VCR Prep
- VCR HIFI With Remote, Stereo, 4-Head
- Washer/Dryer One Piece

## EXTERIOR FEATURES

- Convex Exterior Chrome Mirror With Remote Control And Defrost, Front Mounted
- Exterior Front & Rear Gel-Coated Fiberglass End Caps, Seamless
- Exterior Sides Seamless Gel-Coated Fiberglass
- Hitch For Towing Car With Wire Connector
- Jacks Hydraulic Leveling With Automatic Control And Air Dump
- Mud Flaps (front & rear)
- Roof & Radius Top Wrap Gel-Coated Fiberglass
- Slideout Large With Flat Floor (U.S. PATENT Approval #5,491,933)
- Undercoating - Aqua - Seal
- "Rhino" Coated Storage Compartment w/Electric Latch & Lock Doors

## INTERIOR FEATURES

- Ceiling Padded Vinyl
- Comforter Quilted With Mats
- Designer Kitchen Area Rug
- Floor Covering Ceramic Tile
- Floor Covering, Carpet Stain
- 45oz 100% Nylon Plush Saxo
- Halogen Lighting w/Dimmer
- Sink Covers Two, Corian
- Smoke Detector & 10BC Fire
- Window Garish (residential s
- Window Treatment Day/Night Shades & Shadow Boxes
- Window Treatment Mini Blin

## PLUMBING & BATH

- 1/2" CPVC Water Lines And
- Bath Accessories Brass (1 each-towel bar tissue holder)
- Exterior Convenience Wash S (hot/cold water soap & towel)
- Faucet For Kitchen Sink Sink With Pull out Spout (Moen)
- Faucet For Shower & Lavator
- Monitor Panels (interior & ex
- Sewage Holding Tank Rinse
- Stool China With Spray Attac
- Tub/Shower Fiberglass With
- Water Filtering System With
- Water Hose With Automatic
- Winterize Convenience Packa

## CONSTRUCTION FE

- Floor Decking Structurwood
- Insulation 1/4" Foam Board I
- Insulation Fiberglass R7 Side
- Insulation Foam 5/8" lamina
- Structure, Aluminum Sidewa
- Structure, Widebody

## CABINETS & FURN


- Cabinet Doors With Positive
- Cabinetry Cherry Hardwood Doors (unitized construction)
- Chair Flexsteel High Back Re
- Corian Countertop & Lavato
- Corian Countertop & Sink In
- Dinette Table With Corian In Upholstered Chairs
- Drawers With Metal Guides
- Front Seats Villa Leather/vin Power Lumbar Support & Ai
- Molded Silverware Divider T
- Seat 6-Way Power On Driver
- Sofa Flexsteel Leather (sleep







# LONDON AIRE

BY **Newmar Corp.** 

1007 Diesel Bus

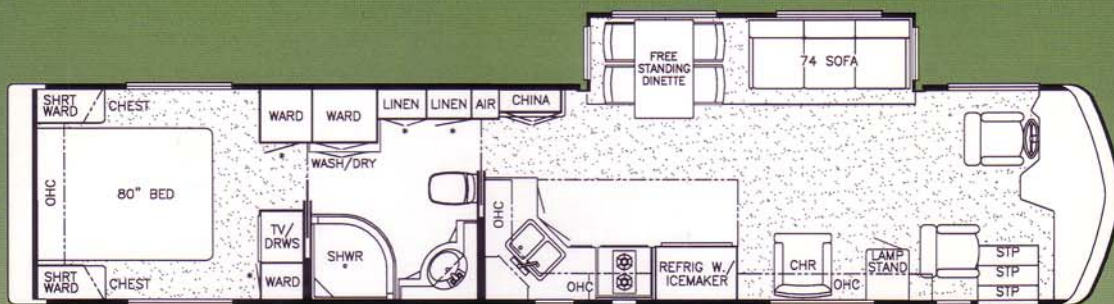




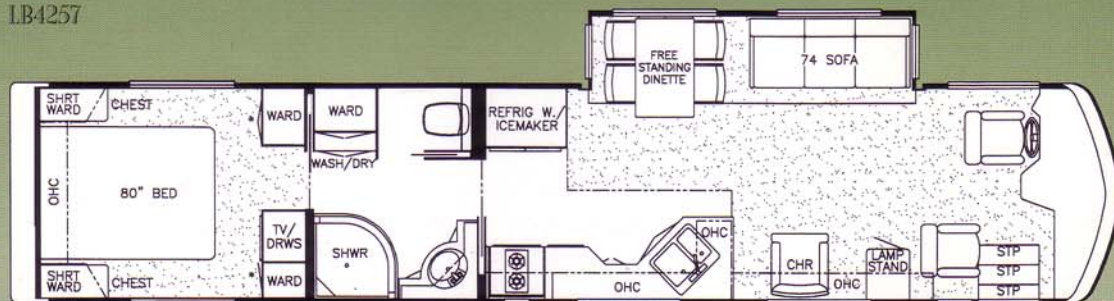
355 N DELAWARE ST  
P O BOX 30  
NAPPANEE IN 46550-0030  
(219) 773-7791 • FAX (219) 773-2895

Compliments of:

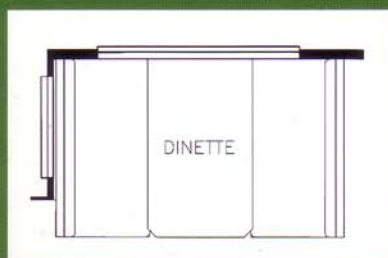




LB4257

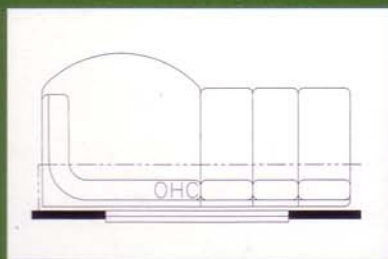


LB4259



Option 7K270  
Booth Dinette  
ILO Free Standing Dinette

### Optional Items



### London Aire® Sizes and Capacities

Model	LB4257	LB4259
Approx. Overall Length	43'-0"	43'-0"
Overall Width	101"	101"
Approx. Overall Height	12'-6"	12'-6"
Interior Width	95-1/2"	95-1/2"
Interior Height	82"	82"
Grey Tank	55 Gal.	55 Gal.
Sewage Tank	55 Gal.	55 Gal.
Water Tank	110 Gal.	110 Gal.
L/P Tank	42 Gal.	42 Gal.
Furnace BTU	50,000	50,000

### Chassis Specifications

Model	LB4257	LB4259
Chassis	Spartan K2	Spartan K2
Engine	400 H.P.	400 H.P.
Axle Ratio	4.11	4.11
Fuel Cap	150 Gal.	150 Gal.
Wheel Base	286"	286"
Front GAWR	13,200 lbs.	13,200 lbs.
Rear GAWR	23,000 lbs.	23,000 lbs.
GVWR	36,200 lbs.	36,200 lbs.
GCWR	41,200 lbs.	41,200 lbs.
Approx.		



# London Aire

1997 Luxury Coach

## Air Conditioning & Heating

- Air Conditioner Central Duo-Therm Basement Model 27M BTU
- Aqua Hot Hydronic Zone Heating System
- LP Gas Tank 42 Gallons
- LP Leak Detector

## Appliances & Accessories

- Cable TV Connection
- Carbon Monoxide Detector
- CB Radio
- Cellular Telephone Antenna
- Coffee Maker
- Digital Compass & Thermometer
- Freezer Norcold AC/DC (on slides) in Exterior Storage Compartment
- Horn (air)
- Microwave Oven Convection 30"
- Portable Vacuum
- Range Cover Laminated with Matching Countertop Material
- Range Recessed Gaganau 2-Burner Hot Plate (4257, 4259)
- Rear View Monitor System
- Refrigerator Dometic 7732 Side-by-Side with Icemaker
- Refrigerator Front Framed Hardwood Raised Panel
- Remote CD Player with Amplifier
- Safe
- Satellite Dish (Telco) with Automatic System & DSS Receiver
- Security System
- Stereo AM/FM Cassette with Clock (bedroom)
- Stereo AM/FM Cassette with Clock (in dash)
- Telephone Connection with 2 Phone Jacks
- TV Antenna with Power Booster & 2 Jacks (low profile)
- TV Color 19" (in bedroom)
- TV Color 27" (in dash overhead)
- TV Jack for Exterior Use on Door Side
- VCR HiFi with Remote
- VCR Prep with TV Video Switch
- Washer/Dryer Compact One Piece

## Cabinets & Furniture

- Cabinet Doors with Positive Catches & Knife Hinges
- Cabinetry Cherry Hardwood with Raised Panel Cathedral Doors (unitized construction)
- Cedar Paneling on Side Wall of One Wardrobe
- Chair Flexsteel High Back Recliner Ultra Suede
- Corian Countertops & Sink in Kitchen

## Cabinets & Furniture

- Drawers with Metal Guides & Side Rollers
- Front Seats Flexsteel Leather/Vinyl with Pneumatic Power Lumbar Support & Air Ride
- Molded Silverware Divider Tray
- Seat 6-way Power on Driver & Passenger
- Sofa Flexsteel Leather/Vinyl (sleeper)

## Chassis Features

- Chassis Spartan K2 400 HP
- Air Brakes with Auto Slack Adjuster Front & Rear
- Anti Lock Braking System
- Back-Up Alarm
- Cruise Control
- Dash Heater/Air Conditioner High Output
- Pac 8 Engine Exhaust Brake
- Recessed Fuel Fill with Locking Door (1 each side)
- Steering Wheel Tilt & Telescope
- Suspension Air Ride
- Wheels Polished Aluminum

## Electrical Features

- Battery Disconnect (coach battery)
- Battery, Thermoil (6-6 volt)
- Electric Service 50 AMP with Remote Controlled 12 Volt Powered
- Rewind for Cord
- Generator 10.0 KW Power Tech (diesel) on Slides with Automatic Changeover
- Inverter/Converter (Heart Freedom 25)
- Light Spot with Remote Control
- Lights Cornering Assistance
- Lights Daytime Headlight System
- Lights Docking
- Lights Driving
- Lights Exterior Security (2 each side)
- Lights Fluorescent in Exterior Storage Compartments with Automatic Switches
- Lights in Kitchen Base Cabinet Toe Kick Area & Lamberquins
- Lights in Wardrobes with Automatic Switches
- Lights Interior Courtesy
- Midship Side Turn Signals
- Receipts 110 Volt with Ground Fault Interrupter (interior & exterior)
- Solar Panel 5 Watt to Charge Chassis Battery
- Switch for Emergency Chassis Engine Start

## Exterior Features

- Convex Exterior Chrome Mirrors with Remote Control & Defrost, Front Mounted

## Exterior Features (continued)

- Hitch for Towing Car with Wire Connector
- Jacks Hydraulic Leveling with Automatic Control & Air Dump
- Mud Flaps (front & rear)
- Pull Out Storage Trays in Exterior Compartments
- Roof & Radius Top Wrap Gel-Coated Fiberglass
- Slideout Large with Patented Flat Floor (see floorplans for availability & layout)
- Undercoating

## Interior Features

- Ceiling Padded Vinyl
- Comforter Quilted with Matching Shams & Accent Pillow
- Designer Kitchen Area Rug
- Floor Covering, 12" Ceramic Tile in Bath and Kitchen Area
- Floor Covering, Carpet Staintech, 45 oz. 100% Nylon Plush Saxony
- Floor Covering, Sculptured Carpet with High Density Pad
- Sink Covers, Two
- Smoke Detector & 10 BC Fire Extinguisher
- Sun Shade on Driver's Side Window
- Wall Covering, Color Coordinated Wall Paper
- Window Garnish (residential style)
- Window Treatment Day/Night Pleated Shades & Shadow Boxes
- Window Treatment Mini Blinds (kitchen)

## Plumbing / Bath Features

- Bath Accessories Brass (1 each-towel bar, tissue holder, towel ring & robe hook)
- Exterior Convenience Wash Station (hot/cold water, soap & towel dispenser)
- Faucet for Kitchen Sink Single Handle with Pull-out Spout (Moen)
- Faucet for Shower & Lavatory Single Handle (Moen)
- Monitor Panels (interior & exterior)
- Sewage Holding Tank Rinse
- Stool China with Spray Attachment
- Tub/Shower Fiberglass with Enclosure
- Water Filtering System with Drink Dispenser (kitchen)
- Water Hose with Auto Rewind & City Water Hook-up
- Winterize Convenience Package (with water heater bypass)

## Construction Features

- Insulation 1/4" Foam Board Exterior Roof
- Insulation Fiberglass R7 Sidewalls &

## Standard Features

### Windows, Awnings, Vents

- Awning Side A&E 9000
- Awning Window A&E 9000 (on bedroom & slideout windows)
- Door Bell
- Exterior Lighted Acrylic Assist Handle (at main entrance door)
- Front Entry Door with Air Powered Step Well Cover
- Keyless Entry Door
- Step 12 Volt Automatic
- Vent 12 Volt Fantastic with Rain Sensor in Bath
- Windows Radius Safety Glass Thermopane, Dark Tinted

## Optional Features

Approx.  
Weight

### Appliances & Accessories

- Pathmaster Navigation System 8 lbs.

### Cabinets & Furniture

- Cabinetry Bleached Oak Hardwood 0 lbs.
- Cabinetry Oak Hardwood 0 lbs.
- Chair Flexsteel Large Free Standing Recliner Leather/Vinyl in place of Standard 27 lbs.
- Chair Flexsteel Large Free Standing Recliner Ultra Suede in place of Recliner and Lamp Stand

### Windows, Awnings, Vents

- Awning A & E Front Entrance Door





*With the push of a button, Newmar's patented slideout room glides out quickly and transforms your room to nearly double its size. Newmar pioneered this flush floor technology and was the first manufacturer to incorporate a slideout into a motorhome.*

*The master bedroom is elegantly appointed; the cabinetry is handcut from cherry hardwoods. A beveled mirror accents the headboard in this gracious room.*

*The large, uncluttered bath in the London Aire® Luxury Coach features a custom Corian® countertop, rich cherry cabinetry and euro-style shower.*

*Newmar engineers have integrated large, functional slide out, weather-proof storage areas.*





# London Aire

1997 Luxury Coach



Day trips are always a pleasure in the London Aire Luxury Coach with its many integrated features designed to indulge your every on-the-road wish. Entertaining is carefree and easy with a galley that includes a microwave/convection oven, side-by-side refrigerator with ice maker and a built-in coffee maker, all neatly nestled in hardwood cherry cabinetry.



When it's time to relax, you'll be surrounded by luxurious interior appointments including plush

45 oz. sculptured saxony carpet, elegantly pleated window treatments and beautifully color coordinated wallpaper.

Entertainment amenities include a 27" color TV in the overhead dash area, 19" color TV in the bedroom, automatic satellite dish, VCR with remote and two stereo systems.

It all adds up to unsurpassed Newmar value and year-after-year of luxuriously planned enjoyment for the discriminating buyer.



## London Aire

1997 Luxury Coach

*The true mark of a luxury coach is its attention to every detail. Consider the thoughtful planning of the kitchen. The galley is enhanced by Corian® countertop, built-in coffee maker, side-by-side refrigerator and microwave/convection oven, to name a few.*

*Artfully arranged within the Luxury Coach interior is this optional leather love seat with well-planned built-in incliner.*





# London Aire

1997 Luxury Coach

Elegant, sophisticated, an engineering masterpiece — the new London Aire Luxury Coach is a triumph of innovation and luxury from the masters at Newmar.



Graceful lines create a striking silhouette in this impressive coach. Its beautiful exterior sides display seamless gel-coated fiberglass with clear coat finish. It stands firmly on a Spartan K2 Chassis with 400 horses at your beck and call, while the superb air ride



Uncompromising work standards are only a part of what Newmar's world-class quality is all about. Professionals working together to produce distinctive, dependable and durable products that will serve you for many years. Our aim is to maintain the highest standards in quality and customer service.

We invite you to visit our new, built in 1995, state-of-the-art production facility in Nappanee, Indiana. Tours are offered weekdays at 10:00 A.M. and 2:00 P.M. E.S.T.



Mahlon Miller  
Chairman of the Board

Don't forget to check out the Klub - the Newmar Kountry Klub, that is. All you need to be eligible is to be the proud owner of any one of the fine Newmar recreational vehicles.

**Newmar Kountry Klub**



**Leisure Time R.**