

Dutch Star

1997 Class A Motorhomes

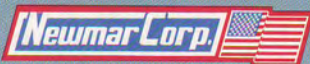
Kountry Star



1997 Dutch Star®



1997 Kountry Star®



An American Tradition of Excellence.

*Dutch Star
just keeps
getting better
with each
passing year.*



Fill up on your favorite meals in the cozy dinette. Relax after your feast in the spacious living room slideout which provides an abundance of comfortable room.



A fully equipped kitchen awaits your command. Meal preparation is easy and quick with all the conveniences of home on board.

The 1997 Dutch Star® gasoline powered Class A motorhome provides a beautiful introduction into the Newmar family of fine motorized recreational vehicles. There are four new interiors in the '97 line and two striking exterior graphics packages to choose from as well. And, Newmar builds them tough, too. So tough that we've increased our slideout warranty to 3 years, so you can rest assured that your Dutch Star® will provide many happy years of troublefree traveling. Our new 24 hour customer care program is dedicated to assisting you quickly and efficiently, when you need us most.



Coordinated by a professional decorator, the decor of the Dutch Star® offers you options with your choice of cabinetry, fabrics and furniture, allowing you to create your own personal rolling showpiece.



A walk-around queen size bed is surrounded by oversized cabinets and extended closet space. Each side features a built-in night stand with drawer, a reading light and 110 volt outlet.



or the traveler who likes a little more power and the benefit of a tough Cummins 250 diesel powered engine, take a look at the Dutch Star® Diesel Pusher from Newmar.

Features like air ride suspension and the exclusive, Newmar slideout help make traveling so enjoyable, you'll be planning your next trip before you get home.

You'll enjoy a world of travel possibilities and scenic destinations after discovering the beauty of the distinctive Dutch Star.®



Whether you're debating politics, planning your day, or buttering a short stack of pancakes, the dinette table always seems to be just the right spot. Also incorporated into the slideout is a comfortable sofa-sleeper to unwind in.



Deep counters and cabinets, along with a double sink and wide array of modern appliances, fill the kitchen.



"Just a few more miles" is easy in optional power leather seats by Flexsteel.® The easy to reach controls on the European design dash put you in fingertip command.



An optional recliner chair compliments the living room area and a nearby end table with file drawer neatly organizes your trip logs, warranty papers and other important documents.

Dutch Star
1997 Class A Motorhomes



You'll appreciate the extra space provided in the Kountry Star® slideout. With Newmar's patented flat floor design, step-ups are a thing of the past.

The Kountry Star® not only takes you to breathtaking locations, it's charm and elegance can take your breath away.

Built on Newmar's extra-strong I-beam chassis, this 101" widebody gives you even more interior space than last year's model and features a bus style front. Now available in lengths from 29' to 37' and a smooth Filon® exterior shell, you'll enjoy features like air brakes and Granning air-ride suspension on most models.

You'll always be comfortable with the 2-zone programmable thermostat system that maintains consistent temperatures. It's efficient circulation of air is not only quieter, but cleaner too, due to additional filtration in the cold air returns.



An ergonomically designed console provides fingertip control while an optional 6-way power leather driver's seat by Flexsteel® keeps you in your comfort zone. Overhead defrosters respond quickly to maximize visibility should the weather suddenly change.

The
1997 Kountry Star®
by Newmar
brings a western
sunset home.

Storage galore surrounds the queen size bed. Matching window treatments and two-toned pleated shades further enhance the beauty of the Kountry Star® bedroom.



No more steps! With the patented flat floor slideout, Newmar has extended the floor space, enabling you to enjoy more room at the dinette or in the living room while maintaining an even flow throughout the coach.

Kountry Star

1997 Class A Motorhomes

Forget the expensive restaurants, meals are a breeze in the well-equipped kitchen and everything is easily within reach.



Dutch Star

1997 Class A Motorhomes

Kountry Star



1997 Dutch Star® Diesel Pusher



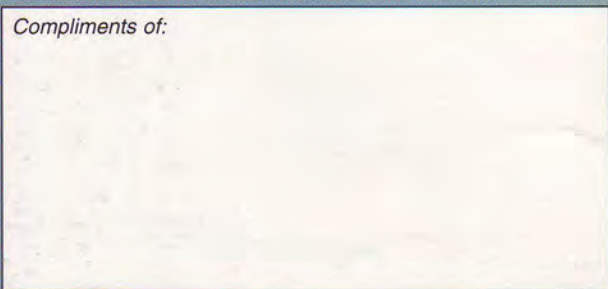
1997 Kountry Star®

We invite you to visit our new state-of-the-art production facility in Nappanee, Indiana.
Plant tours are offered at 10:00 a.m. and 1:00 p.m., Monday-Friday.

Newmar Kountry Klub

Don't forget to check out the Klub—the Newmar Kountry Klub, that is. All you need for eligibility is to be a proud owner of any of the fine Newmar recreational vehicles.

Compliments of:



An American Tradition of Excellence.

355 N DELAWARE ST
PO BOX 30
NAPPANEE IN 46550-0030
(219) 773-7791 • FAX (219) 773-2895

Dutch Star

Class A Motorhomes

Kountry Star

Specifications



1997 Dutch Star®

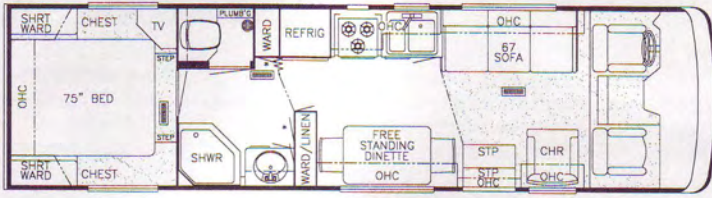


1997 Kountry Star®

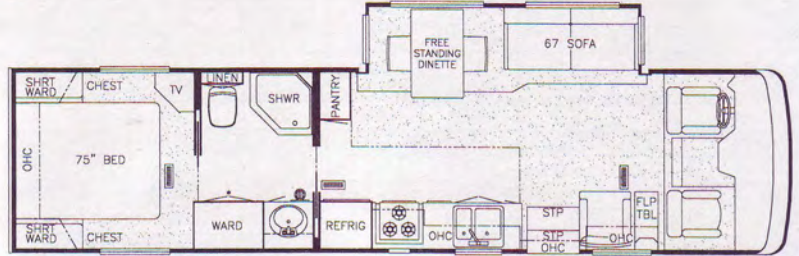


An American Tradition of Excellence.

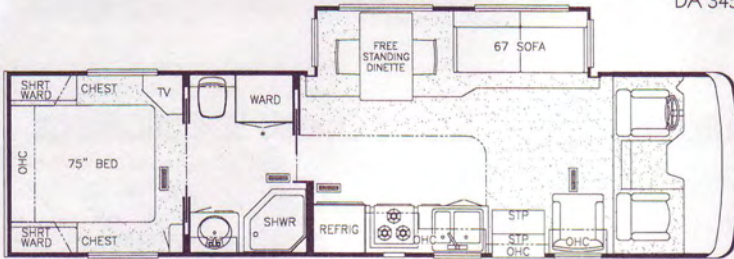
1997 • Floorplans



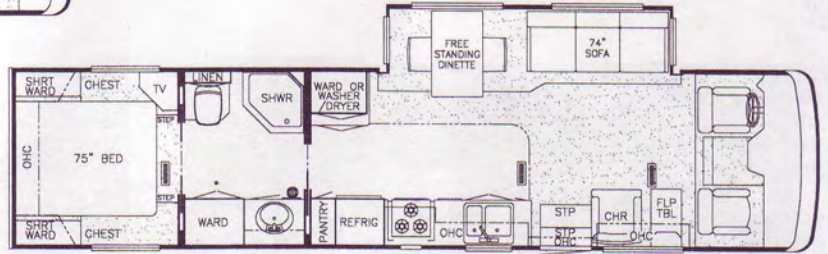
DA 3106



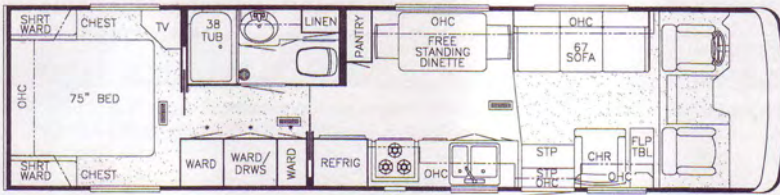
DA 3455



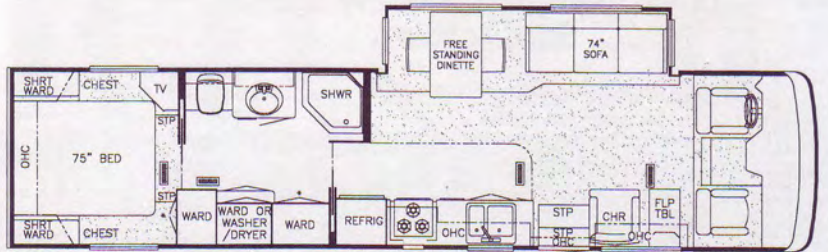
DA 3256



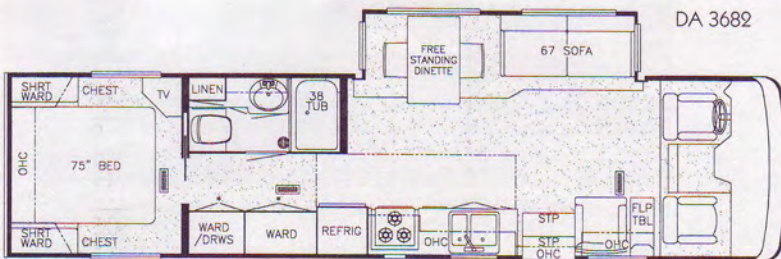
DA 3458



DA 3401



DA 3682



DA 3450

Prices, specifications and floor plans are subject to change at Newmar's discretion without prior written notice or obligation. Some floor plans may show optional chairs or end tables. See your Dealer for availability.

Dutch Star

Class A Motorhomes

Dutch Star® Class A Freightliner Chassis Specifications

Model	DA 3106	DA 3256	DA 3401	DA 3450	DA 3455	DA 3658	DA 3682
Chassis	Freightliner	Freightliner	Freightliner	Freightliner	Freightliner	Freightliner	Freightliner
Engine	210 H.P.	210 H.P.	210 H.P.	210 H.P.	210 H.P.	210 H.P.	210 H.P.
Axle Ratio	3.31	3.31	3.31	3.31	3.31	3.31	3.31
Fuel Cap	90 Gal.	90 Gal.	90 Gal.	90 Gal.	90 Gal.	90 Gal.	90 Gal.
Wheel Base	200"	200"	228"	208"	208"	228"	228"
Front GAWR	7,000 lbs.	7,000 lbs.	7,000 lbs.	7,000 lbs.	7,000 lbs.	7,000 lbs.	7,000 lbs.
Rear GAWR	13,500 lbs.	13,500 lbs.	13,500 lbs.	13,500 lbs.	13,500 lbs.	13,500 lbs.	13,500 lbs.
GVWR	20,500 lbs.	20,500 lbs.	20,500 lbs.	20,500 lbs.	20,500 lbs.	20,500 lbs.	20,500 lbs.
GCWR	25,500 lbs.	25,500 lbs.	25,500 lbs.	25,500 lbs.	25,500 lbs.	25,500 lbs.	25,500 lbs.
Approx. Unloaded Vehicle Wt.	14,273 lbs.	14,539 lbs.	14,236 lbs.	15,036 lbs.	15,060 lbs.	15,991 lbs.	15,991 lbs.
Approx. Net Carrying Cap.	6,227 lbs.	5,961 lbs.	6,264 lbs.	5,464 lbs.	5,440 lbs.	4,509 lbs.	4,509 lbs.

Lengths, Heights, Widths, Dry Weights and Hitch Weights are approximate.



Dutch Star® Class A Ford Chassis Specifications

Model	DA 3106	DA 3256	DA 3401	DA 3450	DA 3455	DA 3658	DA 3682
Chassis	Ford	Ford	Ford	Ford	Ford	Ford	Ford
Engine	460	460	460	460	460	460	460
Axle Ratio	5.13	5.13	5.13	5.13	5.13	5.13	5.13
Fuel Cap	75 Gal.	75 Gal.	75 Gal.	75 Gal.	75 Gal.	75 Gal.	75 Gal.
Wheel Base	200"	200"	228"	208"	208"	214"+tag	214"+tag
Front GAWR	6,000 lbs.	6,000 lbs.	6,000 lbs.	6,000 lbs.	6,000 lbs.	6,000 lbs.	6,000 lbs.
Rear GAWR	11,000 lbs.	11,000 lbs.	11,000 lbs.	11,000 lbs.	11,000 lbs.	11,000 lbs.	11,000 lbs.
Tag GAWR	—	—	—	—	—	4,000 lbs.	4,000 lbs.
GVWR	17,000 lbs.	17,000 lbs.	17,000 lbs.	17,000 lbs.	17,000 lbs.	20,000 lbs.	20,000 lbs.
GCWR	25,000 lbs.	25,000 lbs.	25,000 lbs.	25,000 lbs.	25,000 lbs.	25,000 lbs.	25,000 lbs.
Approx. Unloaded Vehicle Wt.	13,170 lbs.	13,982 lbs.	13,865 lbs.	14,385 lbs.	14,421 lbs.	16,214 lbs.	16,214 lbs.
Approx. Net Carrying Cap.	3,830 lbs.	3,018 lbs.	3,135 lbs.	2,615 lbs.	2,579 lbs.	3,786 lbs.	3,786 lbs.

Lengths, Heights, Widths, Dry Weights and Hitch Weights are approximate.



Dutch Star® Class A Chevy Chassis Specifications

Model	DA 3106	DA 3256	DA 3450	DA 3455	DA 3658	DA 3682
Chassis	Chevy	Chevy	Chevy	Chevy	Chevy	Chevy
Engine	454	454	454	454	454	454
Axle Ratio	4.63	4.63	4.63	4.63	4.63	4.63
Fuel Cap	80 Gal.	80 Gal.	80 Gal.	80 Gal.	80 Gal.	80 Gal.
Wheel Base	200"	200"	208"	208"	214"+tag	214"+tag
Front GAWR	5,500 lbs.	5,500 lbs.	5,500 lbs.	5,500 lbs.	5,500 lbs.	5,500 lbs.
Rear GAWR	11,000 lbs.	11,000 lbs.	11,000 lbs.	11,000 lbs.	11,000 lbs.	11,000 lbs.
Tag GAWR	—	—	—	—	4,000 lbs.	4,000 lbs.
GVWR	16,500 lbs.	16,500 lbs.	16,500 lbs.	16,500 lbs.	19,000 lbs.	19,000 lbs.
GCWR	21,000 lbs.	21,000 lbs.	21,000 lbs.	21,000 lbs.	21,000 lbs.	21,000 lbs.
Approx. Unloaded Vehicle Wt.	12,700 lbs.	13,512 lbs.	13,915 lbs.	13,951 lbs.	15,744 lbs.	15,744 lbs.
Approx. Net Carrying Cap.	3,800 lbs.	2,988 lbs.	2,585 lbs.	2,549 lbs.	3,256 lbs.	3,256 lbs.

Lengths, Heights, Widths, Dry Weights and Hitch Weights are approximate.

Dutch Star® Class A Sizes and Capacities

Model	DA 3106	DA 3256	DA 3401	DA 3450	DA 3455	DA 3658	DA 3682
Approx. Overall Length	31'-11"	32'-11"	34'-11"	34'-11"	34'-11"	36'-11"	36'-11"
Overall Width	96"	96"	96"	96"	96"	96"	96"
Approx. Overall Height	11'-5"	11'-5"	11'-5"	11'-5"	11'-5"	11'-5"	11'-5"
Interior Width	90-1/2"	90-1/2"	90-1/2"	90-1/2"	90-1/2"	90-1/2"	90-1/2"
Interior Height	78"	78"	78"	78"	78"	78"	78"
Grey Tank	40 Gal.	40 Gal.	40 Gal.	40 Gal.	40 Gal.	40 Gal.	40 Gal.
Sewage Tank	40 Gal.	40 Gal.	40 Gal.	40 Gal.	40 Gal.	40 Gal.	40 Gal.
Water Tank	45 Gal.	45 Gal.	45 Gal.	45 Gal.	45 Gal.	45 Gal.	45 Gal.
L/P Tank	25 Gal.	25 Gal.	25 Gal.	25 Gal.	25 Gal.	25 Gal.	25 Gal.
Furnace BTU	30,000	30,000	35,000	35,000	35,000	35,000	35,000

Lengths, Heights, Widths, Dry Weights and Hitch Weights are approximate.

Dutch Star

Diesel Pusher

1997 • Standard Features

Air Conditioning & Heating

Air Conditioner Central Penguin
13.5 BTU with Heat Strip (1)
Heat In Floor Ducted
LP Gas Tank 32 Gallons
LP Leak Detector

Appliances & Accessories

Cable TV Connection
Carbon Monoxide Detector
CB Antenna
Microwave Oven 22"
Range Cover Laminated with Matching
Countertop Material
Range Hood with Light & Fan
Range Recessed Wedgewood 3-Burner
with Black Glass Oven Door
Rear View Monitor System
Refrigerator Dometic Americana
Double Door 2852
Stereo AM/FM Cassette with Clock (in dash)
TV Antenna with Power Booster & 2 Jacks
TV Color 19" (in dash overhead)
VCR Prep with TV Video Switch
Water Heater 10 Gallon Gas/Electric
with Direct Spark Ignition

Cabinets & Furniture

Cabinetry Oak with Raised Panel Doors
Chair Flexsteel Swivel Barrel
Front Seats Flexsteel Swivel/Recline

Cabinets & Furniture (continued)

Lifts for Convenient Storage Under Fixed Beds
Molded Silverware Divider Tray
Sofa Flexsteel Easybed with Built in Drawer

Chassis Features

Chassis-Spartan Highlander 250HP Raised Rail
Air Brakes with Auto Slack Adjuster
Front & Rear
Back-up Alarm
Cruise Control
Dash Heater/Air Conditioner High Output
Pac 8 Engine Exhaust Brake
Recessed Fuel Fill with Locking Door
(1 each side)
Steering Wheel Tilt & Telescope
Wheel Simulators, Stainless Steel

Electrical Features

Battery Disconnect (coach battery)
Battery, Thermoil (2-12 volt)
Converter 75 AMP with Charger
Electrical Service 50 AMP with Flexible Cord
Generator 6.5 KW Onan with LP Conversion &
Automatic Changeover
Lights in Exterior Storage Compartments
Recepts 110 Volt with Ground Fault
Interrupter (interior & exterior)
Solar Panel 5 Watt to Charge Chassis Battery
Switch for Emergency Chassis Engine Start

Exterior Features

Convex Exterior Mirrors (driver-side
mount - passenger-front mount)
Exterior Front & Rear Gel-Coated
Fiberglass End Caps
Exterior Sides Filon
Hitch for Towing Car with Wire Connector
Jacks Hydraulic Leveling with Joystick
Controller
Mud Flaps (front & rear)
Roof Rack & Ladder
Roof Rubber
Slideout Large (see floorplans for
availability & layout)
Undercoating

Interior Features

Bedsprad Quilted with Reversed Sham (1)
Decorative Wall Clock & Mirror
Floor Covering, Carpet Staintech,
45 oz. 100% Nylon Plush Saxony
Floor Covering, Carpet with High Density Pad
Sink Cover, One
Smoke Detector & 5 BC Fire Extinguisher
Window Treatment Day/Night
Pleated Shades & Lamberquins
Window Treatment Mini Blinds (kitchen)

Plumbing / Bath Features

Bath Accessories White (2 towel bars,
1 tissue holder)
Monitor Panel
Stool Aqua Magic IV
Tub/Shower Surround with Enclosure
Winterize Convenience Package
(with water heater bypass)

Construction Features

Insulation Fiberglass R7 Sidewalls &
Floor, R11 Roof
Insulation Foam 5/8" Laminated
in Sidewalls & Ceiling
Structure, Aluminum Sidewalls & Roof
Structure, Widebody 100" with
Bus Style Front End

Windows, Awnings, Vents

Entrance Door Stepwell Tread Liner
Front Entry Door with
12 Volt Powered Step Well Cover
Skylight in Bathroom with Soft Shade
Step 12 Volt Automatic
Vent 12 Volt in Bath Area with Wall Switch
Windows Radius Safety Glass Dark Tinted

Optional Features

Air Conditioning & Heating

Air Conditioner Brisk Air 15M BTU
with Heat Strip in place of 13.5M 5 lbs.
Air Conditioner Central Penguin 13.5M BTU
with Heat Strip (extra) 100 lbs.
Auxiliary Heater in Bedroom 20 lbs.

Appliances & Accessories

Basic Sony Satellite Digital Receiver
(does not include programming) 37 lbs.
CB Radio 2 lbs.
Cellular Telephone Antenna 1 lbs.
Coffee Maker 5 lbs.
Freezer Norcold AC/DC (on slides)
in Exterior Storage Compartment 113 lbs.
Horn (air) 5 lbs.
Icemaker Added to Dometic Refrigerator
Royale 3862 5 lbs.
Icemaker U Line 57 lbs.
Microwave Oven Convection 22"
with 3-Burner Hot Plate -16 lbs.
Refrigerator Front Hardwood
Raised Panel 19 lbs.
Remote CD Player with Amplifier 10 lbs.
Satellite Dish (Winegard) with Manual System
(does not include DSS Receiver) 13 lbs.
Satellite Dish Prep Only (Winegard)
with Phone/TV Jack & 110 Volt 2 lbs.
Recept Security System 2 lbs.
Stereo AM/FM CD Player with Upgraded
Speakers in place of Standard Dash Stereo
Telephone Connection with
1 Phone Jack 1 lbs.
Telephone Jack Interior (extra) 1 lbs.
TV Color 13" AC (in bedroom) 24 lbs.
TV Jack (extra) 1 lbs.

Approx
Weight

Appliances & Accessories (continued)

TV Jack for Exterior Use on Door Side 1 lbs.
VCR with Remote 11 lbs.
Washer/Dryer Compact One Piece
(3757, 3758, 3860) 185 lbs.
Washer/Dryer Prep (3757, 3758, 3760) 22 lbs.
Water Heater 10 Gallon Gas/Electric, Direct
Spark Ignition & Engine Assist 10 lbs.

Cabinets & Furniture

Bed Twins 102 lbs.
Built-in Dinette with Drawers in place
of Free Standing Table/Chairs 23 lbs.
Cabinetry Bleached Oak with Raised
Panel Doors 0 lbs.
Chair Flexsteel High Back Recliner
in place of Standard Chair 46 lbs.
Chair Flexsteel High Back Recliner
Leather/Vinyl in place of
Standard Chair 56 lbs.
Corian Countertop Bath & Kitchen
(with recessed kitchen sink) 20 lbs.
Curb Side Lounge Sofa in place of
Barrel Chair & Table (3757, 3860)
(not available with center entrance door)
Dinette Chairs Fixed, Two Extra 20 lbs.
Dinette Table Hidden Leaf in place of
Free Standing Table 50 lbs.
Drawers with Metal Guides &
Side Rollers 5 lbs.
Front Seats Flexsteel Leather/Vinyl with
Power Lumbar Support 4 lbs.
Overhead Cabinet Added in Slideout 75 lbs.
Seat 6-way Power on Driver's Side 77 lbs.
Sofa Flexsteel Hide-A-Bed
in place of Standard 32 lbs.

Chassis Features

Chassis-Spartan Highlander 300HP Raised Rail
Standard Chassis-Spartan Highlander
250HP Raised Rail

Electrical Features

Generator 7.0 KW Power Tech (diesel)
on Slides in place of 6.5 KW 195 lbs.
LP Generator
Inverter 400 Watt (for dash TV & VCR) 10 lbs.
Inverter/Converter (Heart Freedom 20) 25 lbs.
Light Spot with Remote Control 3 lbs.
Lighting Fluorescent Recessed in Ceiling
and Overhead Cabinets 1 lbs.
Lights Docking 4 lbs.
Lights Driving 2 lbs.
Lights Exterior Security (1 each side) 2 lbs.
Lights Exterior Security (2 each side) 4 lbs.
Recept 110 Volt Extra 1 lbs.
Recept 12 Volt Extra 1 lbs.
Switched Recept for Engine
Block Heater 1 lbs.

Exterior Features

Convex Exterior Mirrors with Remote
Control & Defrost, Front Mounted 2 lbs.
Exterior Sides Gel-Coated Fiberglass 40 lbs.
Jacks Hydraulic Leveling with
"Touch" Manual Control

Interior Features

Ceiling Woven Soft Touch 50 lbs.
Center Entrance Door Layout (3757, 3860)
Entrance Door Trimmed
with Hardwood 1 lbs.
Floor Covering, Ceramic Tile
in Bath Area 75 lbs.

Interior Features (continued)

Floor Covering, Hardwood Plank
in Kitchen Area 30 lbs.
Floor Covering, Vinyl in Bath -20 lbs.
Floor Covering, Vinyl in Kitchen Area -20 lbs.
State Seal 0 lbs.
Sun Shade on Driver's Side Window 2 lbs.

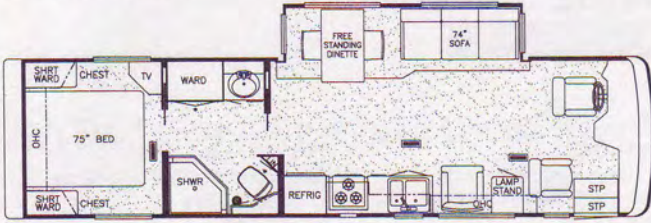
Plumbing / Bath Features

Heat Pads for Holding Tanks 110 Volt 2 lbs.
Sewage Holding Tank Rinse 1 lbs.
Shower Exterior Hook-up
(on off door side) 2 lbs.
Stool China with Spray Attachment 31 lbs.
Tub/Shower Fiberglass 75 lbs.
Water Filtering System with Drink
Dispenser (kitchen) 5 lbs.

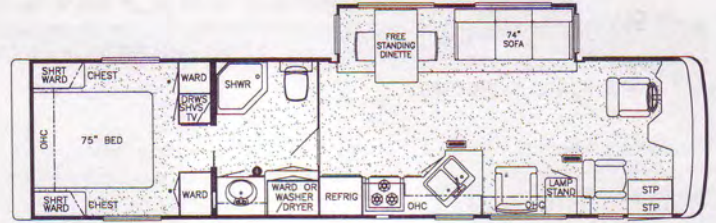
Windows, Awnings, Vents

Awning A&E Front Entrance Door 12 lbs.
Awning Side A&E 8500 110 lbs.
Awning Side A&E 9000 128 lbs.
Awning Slideout Cover 25 lbs.
Awning Window A&E 8500 5 lbs.
Awning Window A&E 9000 5 lbs.
Door Bell 2 lbs.
Door Driver's Side with
Power Window 50 lbs.
Exterior Lighted Acrylic Assist Handle
(at main entrance door) 1 lbs.
Vent 12 Volt Fantastic with Rain Sensor 11 lbs.
Vent 12 Volt Fantastic with Rain Sensor
Vented through Central Air Duct 11 lbs.
Windows Radius Safety Glass
Thermopane, Dark Tinted 400 lbs.

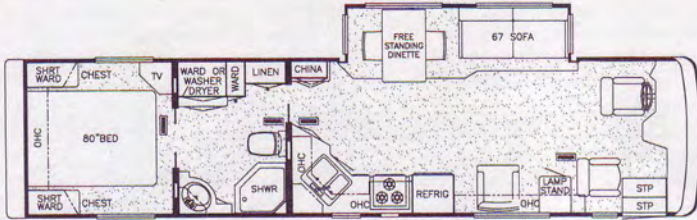
1997 • Floorplans



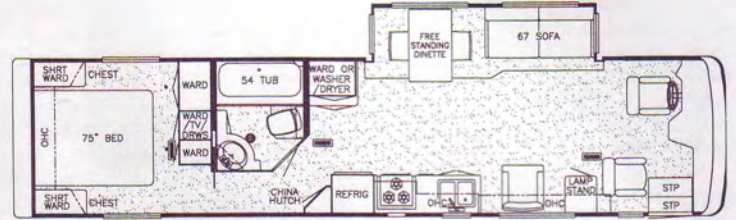
DP 3456



DP 3758



DP 3757



DP 3860

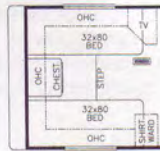
Prices, specifications and floorplans are subject to change at Newmar's discretion without prior written notice or obligation. Some floorplans may show optional chairs or end tables. See your Dealer for availability.

1997 • Optional Custom Floorplans



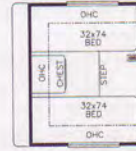
Option 7K270

Available in Models:
DP 3456 DP 3757
DP 3758 DP 3860



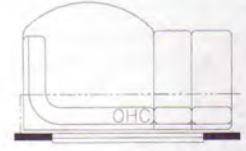
Option 7K090

Available in Models:
DP 3456 DP 3757



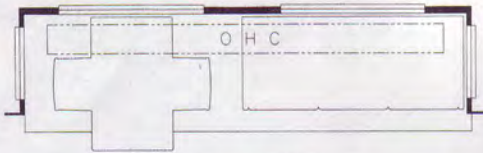
Option 7K090

Available in Models:
DP 3758 DP 3860



Option 7K900

Available in Models:
DP 3757 DP 3860



Option 7K820

Available in Models: DP 3456 DP 3757 DP 3758 DP 3860



Option 7K840

Available in Model: DP 3860



Option 7K930

Available in Model: DP 3860

Dutch Star® Pusher Spartan Chassis Specifications

Model	DP 3456	DP 3737	DP 3758	DP 3860
Chassis	Spartan IC	Spartan IC	Spartan IC	Spartan IC
Engine	250 H.P.	250 H.P.	250 H.P.	250 H.P.
Axle Ratio	4.63	4.63	4.63	4.63
Fuel Cap	100 Gal.	100 Gal.	100 Gal.	100 Gal.
Wheel Base	212"	240"	240"	252"
Front GAWR	9,000 lbs.	9,000 lbs.	9,000 lbs.	9,000 lbs.
Rear GAWR	17,000 lbs.	17,000 lbs.	17,000 lbs.	17,000 lbs.
GVWR	26,000 lbs.	26,000 lbs.	26,000 lbs.	26,000 lbs.
GCWR	31,000 lbs.	31,000 lbs.	31,000 lbs.	31,000 lbs.
Approx. Unloaded Vehicle Wt.	19,863 lbs.	21,120 lbs.	21,110 lbs.	21,789 lbs.
Approx. Net Carrying Cap.	6,137 lbs.	4,880 lbs.	4,890 lbs.	4,211 lbs.

Lengths, Heights, Widths, Dry Weights and Hitch Weights are approximate.

Dutch Star® Pusher Sizes and Capacities

Model	DP 3456	DP 3757	DP 3758	DP 3860
Approx. Overall Length	34'-6"	37'-0"	37'-0"	38'-0"
Overall Width	101"	101"	101"	101"
Approx. Overall Height	11'-8"	11'-8"	11'-8"	11'-8"
Interior Width	95-1/2"	95-1/2"	95-1/2"	95-1/2"
Interior Height	78"	78"	78"	78"
Grey Tank	55 Gal.	55 Gal.	55 Gal.	55 Gal.
Sewage Tank	55 Gal.	55 Gal.	55 Gal.	55 Gal.
Water Tank	105 Gal.	105 Gal.	105 Gal.	105 Gal.
L/P Tank	32 Gal.	32 Gal.	32 Gal.	32 Gal.
Furnace BTU	35,000	35,000	35,000	40,000

Lengths, Heights, Widths, Dry Weights and Hitch Weights are approximate.

Kountry Star

Class A Motorhomes

1997 • Standard Features

Air Conditioning & Heating

Air Conditioner Prep (110 volt wiring)
Heat In Floor Ducted
LP Gas Tank 32 Gallons
LP Leak Detector

Appliances & Accessories

Cable TV Connection
Carbon Monoxide Detector
Microwave Oven 22"
Range Cover Laminated with Matching
Countertop Material
Range Hood with Light & Fan
Range Recessed Wedgewood 3-Burner
with Black Glass Oven Door
Refrigerator Dometic Royale 3862
Stereo AM/FM Cassette with Clock (in dash)
TV Antenna with Power Booster & 2 Jacks
TV Color 19" (in dash overhead)
Water Heater 6 Gallon Gas/Electric
with Direct Spark Ignition

Cabinets & Furniture

Cabinetry Oak with Raised Panel Doors
Chair Flexsteel Swivel Barrel
Drawers with Metal Guides & Side Rollers
Front Seats Flexsteel Swivel/Recline
Lifts for Convenient Storage Under Fixed Beds
Molded Silverware Divider Tray
Sofa Flexsteel Easybed with Built-in Drawer

Chassis Features

Chassis-Ford (460 CID engine)(except 3356)
Chassis-Freightliner Diesel (210 HP
engine)(3356)
Cruise Control
Dash Heater/Air Conditioner High Output
Recessed Fuel Fill with Locking Door
Spare Tire
Steering Wheel Tilt
Suspension Graining Tag Axle (except 2959)
Wheel Simulators, Stainless Steel

Electrical Features

Battery Disconnect (coach battery)
Battery, Thermoil (2-12 volt)
Converter 75 AMP with Charger
Electrical Service 30 AMP
Generator Prep (110V wire, remote start wire)
Lights in Wardrobes
Recepts 110 Volt with Ground Fault
Interrupter (interior & exterior)
Switch for Emergency Chassis Engine Start

Exterior Features

Convex Exterior Mirrors (driver-side
mount - passenger-front mount)
Exterior Front & Rear Gel-Coated
Fiberglass End Caps
Exterior Sides Filon
Hitch for Towing Car with Wire Connector

Exterior Features (continued)

Mud Flaps (front & rear)
Roof Rack & Ladder
Roof Rubber
Slideout Large with Patented Flat Floor
(see floorplans for availability & layout)
Undercoating

Interior Features

Bedsprad Quilted with Reversed
Shams & Accent Pillow
Ceiling Woven Soft Touch
Decorative Wall Clock & Mirror
Floor Covering, Carpet Staintech,
45 oz. 100% Nylon Plush Saxony
Floor Covering, Vinyl in Bath
Floor Covering, Vinyl in Kitchen Area
Sink Covers, Two
Smoke Detector & 5 BC Fire Extinguisher
Window Treatment Day/Night Pleated Shades
& Lamberquins
Window Treatment Mini Blinds (kitchen)

Plumbing / Bath Features

Bath Accessories White (2 towel bars,
1 tissue holder & robe hook)
Monitor Panel
Stool Aqua Magic IV
Tub/Shower Fiberglass with Enclosure
Winterize Convenience Package
(with water heater bypass)

Construction Features

Insulation Fiberglass R7 Sidewalls & Floor,
R11 Roof
Insulation Foam 5/8" Laminated in
Sidewalls & Ceiling
Rear Bumper with Slide Out Tray
for Spare Tire
Structure, Aluminum Sidewalls & Roof
Structure, Widebody 100" with Bus Style
Front End

Windows, Awnings, Vents

Entrance Door Stepwell Tread Liner
Skylight in Bathroom
Step 12 Volt Automatic
Vent 12 Volt in Bath Area with Wall Switch
Windows Radius Safety Glass Dark Tinted

Optional Packages

	Approx Weight
B7 Dual Air Preferred Equipment (not available with Freightliner Chassis)	643 lbs.
D7 Dual Air Preferred Equipment (not available with Freightliner Chassis)	472 lbs.
G7 Preferred Equipment	548 lbs.

Air Conditioning & Heating

Air Conditioner Brisk Air 15M BTU with Heat Strip (extra)	100 lbs.
Air Conditioner Brisk Air 15M BTU with Heat Strip in place of 13.5M	5 lbs.
Air Conditioner Central Penguin 13.5 BTU with Heat Strip (1)	105 lbs.
Air Conditioner Central Penguin 13.5M BTU with Heat Strip (extra)	100 lbs.

Appliances & Accessories

Basic Sony Satellite Digital Receiver (does not include programming)	37 lbs.
CB Radio	2 lbs.
Cellular Telephone Antenna	1 lbs.
Coffee Maker	5 lbs.
Horn (trumpet)	2 lbs.
Icemaker Added to Dometic Refrigerator	5 lbs.
Icemaker U Line	57 lbs.
Microwave Oven Convection 30" with 3-Burner Hot Plate	13 lbs.
Rear View Monitor Prep	1 lbs.
Rear View Monitor System	5 lbs.
Refrigerator Dometic 7732 Side-by-Side (3411, 3481, 3710, 3757, 3758)	47 lbs.
Refrigerator Front Hardwood Raised Panel	19 lbs.
Remote CD Player with Amplifier	10 lbs.
Satellite Dish (Winegard) with Manual System (does not include DSS Receiver)	13 lbs.
Satellite Dish Prep Only (Winegard) with Phone/TV Jack & 110 Volt Recept	2 lbs.
Stereo AM/FM CD Player with Upgraded Speakers in place of Standard Dash Stereo	1 lbs.
Telephone Connection with 1 Phone Jack	1 lbs.
Telephone Jack Interior (extra)	1 lbs.
TV Color 13" AC (in bedroom)	24 lbs.

Appliances & Accessories (continued)

TV Jack (extra)	1 lbs.
TV Jack for Exterior use on Door Side	1 lbs.
VCR Prep with TV Video Switch	1 lbs.
VCR with TV Video Switch & VCR Prep	12 lbs.
Washer/Dryer Compact One Piece (3450, 3481, 3558, 3757, 3758, 3780)	185 lbs.
Washer/Dryer Prep (3450, 3481, 3558, 3757, 3758, 3760, 3780)	22 lbs.
Water Heater 10 Gallon Gas/Electric with Direct Spark Ignition	1 lbs.

Cabinets & Furniture

Bed Twins (except 2955)	102 lbs.
Built-in Dinette with Desk in place of Sofa (2959)	83 lbs.
Built-in Dinette with Drawers in place of Free Standing Table/Chairs	23 lbs.
Cabinetry Bleached Oak with Raised Panel Doors	0 lbs.
Chair Flexsteel High Back Recliner in place of Standard Chair	46 lbs.
China Cabinet with No Decorator Glass, Mirrors, Clear Shelving or Lights	
Dinette Chairs Fixed, Two Extra	20 lbs.
Front Seats Flexsteel Leather/Vinyl with Power Lumbar Support	10 lbs.
Honeymoon Suite Bedroom (3758, 3760, 3780)	-9 lbs.
Off Door Side Kitchen Wardrobe with Drawers (3760)	-30 lbs.
Off Door Side Wardrobe with Pull Out Pantry and Drawers (3760)	-13 lbs.
Overhead Cabinet Added in Slideout	75 lbs.
Pull Out Pantry (3411, 3450, 3710, 3757, 3758, 3780)	10 lbs.
Queen Bed Location Change (except 2959, 3758, 3760, 3780)	
Seat 6-Way Power on Driver's Side	77 lbs.
Sofa Flexsteel Hide-A-Bed in place of Standard (except 3410, 3710)	32 lbs.

Chassis Features

Optional Chassis-Chevy (Vortec engine) (2959, 3410, 3411, 3450, 3481, 3558, 3757)	
Optional Chassis-Freightliner Diesel (210 HP engine)(2955)	

Chassis Features (continued)

Optional Chassis-Freightliner Diesel without a Tag Axle (210 HP engine)(except 2959, 3356)	
Standard Chassis-Ford (460 CID Engine) (except 3356)	
Standard Chassis-Freightliner Diesel (210 HP engine)(3356)	

Electrical Features

Electrical Service 50 AMP with Flexible Cord	9 lbs.
Generator 6.5 KW Onan with One Remote Switch and Automatic Changeover	255 lbs.
Generator LP Gas Conversion (standard on Freightliner chassis)	5 lbs.
Light Spot with Remote Control	3 lbs.
Lighting Fluorescent Recessed in Ceiling and Overhead Cabinets	1 lbs.
Lights Driving	2 lbs.
Lights Exterior Security (1 each side)	2 lbs.
Lights Exterior Security (2 each side)	4 lbs.
Recept 110 Volt Extra	1 lbs.
Recept 12 Volt Extra	1 lbs.

Exterior Features

Convex Exterior Mirrors with Remote Control and Defrost, Front Mounted	2 lbs.
Jacks Hydraulic Leveling with "Touch" Manual Control	172 lbs.
Jacks Hydraulic Leveling with Joystick Controller	172 lbs.

Interior Features

Floor Covering, Hardwood Plank in Kitchen Area	30 lbs.
State Seal	0 lbs.
Sun Shade on Driver's Side Window	2 lbs.

Plumbing / Bath Features

Corner Shower (3780)	
Enclosed Stool Room (3780)	
Enclosed Stool Room with Straight Shower (3558, 3758)	
Heat Pads for Holding Tanks 110 Volt	2 lbs.
Sewage Holding Tank Rinse	1 lbs.
Sewage Hose Holder (easy access flop down tray)	1 lbs.
Shower Exterior Hook-up (on off door side)	2 lbs.
Stool China with Spray Attachment	31 lbs.

Plumbing / Bath Features (continued)

Water Filtering System with Drink Dispenser (kitchen)	5 lbs.
--	--------

Windows, Awnings, Vents

Awning Side A&E 8500	110 lbs.
Awning Side A&E 9000	128 lbs.
Awning Slideout Cover	25 lbs.
Awning Window A&E 8500	5 lbs.
Awning Window A&E 9000	5 lbs.
Door Driver's Side with Power Window	50 lbs.
Exterior Lighted Acrylic Assist Handle (main entrance door)	1 lbs.
Rear Window (not available with twin bed or honeymoon suite option)	40 lbs.
Vent 12 Volt Fantastic with Rain Sensor	11 lbs.

Option Packages

B7 Dual Air Preferred Equipment	
Air Conditioner Central Penguin 13.5M BTU with Heat Strip (2)	
Electrical Service 50 AMP with Flexible Cord Generator 5.0 KW Onan with 1 Remote Switch & Automatic Changeover	
Solar Panel 5 Watt to Charge Chassis Battery	
Jacks Hydraulic Leveling with "Touch" Manual Control	
Rear View Monitor System	

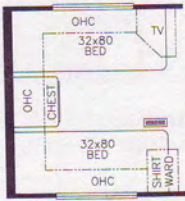
D7 Dual Air Preferred Equipment

Air Conditioner Central Penguin 13.5M BTU with Heat Strip (2)	
Electrical Service 50 AMP with Flexible Cord Generator 5.0 KW Onan with 1 Remote Switch & Automatic Changeover	
Solar Panel 5 Watt to Charge Chassis Battery	

G7 Preferred Equipment

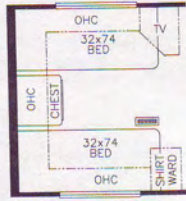
Air Conditioner Central Penguin 13.5 BTU with Heat Strip (1)	
Electrical Service 50 AMP with Flexible Cord Generator 6.5 KW Onan with 1 Remote Switch & Automatic Changeover	
Solar Panel 5 Watt to Charge Chassis Battery	
Jacks Hydraulic Leveling with "Touch" Manual Control	
Rear View Monitor System	

Optional Custom Floorplans



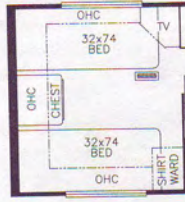
Option 7K090

Available in Models: 3356
3558 3757



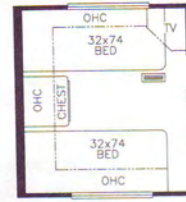
Option 7K090

Available in Models:
3450 3481



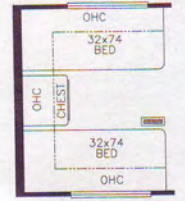
Option 7K090

Available in Models: 3411



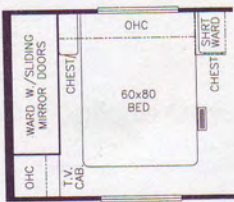
Option 7K090

Available in Models: 3410 3710



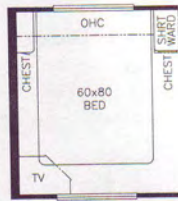
Option 7K090

Available in Models: 3758
3760 KS 3780



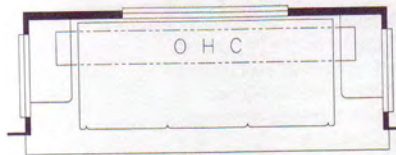
Option 7K950

Available in Models: 3758
3760 3780



Option 7K980

Available in Models: 3356
3410 3411 3450 3481 3558
3710 3757



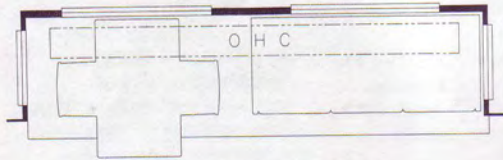
Option 7K820

Available in Model: 2959



Option 7K970

Available in Model: 2959



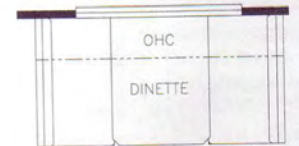
Option 7K820

Available in Models: 3356 3450 3481 3558 3757 3758
3760 3780



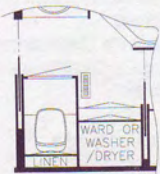
Option 7K270

Available in Models:
3356 3450 3481 3558 3757 3758
3760 3780



Option 7K270

Available in Model: 3710



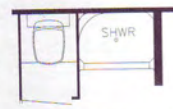
Option 7P190

Available in Model: 3780



Option 7P210

Available in Model: 3780



Option 7P200

Available in Model: 3758



Option 7P200

Available in Model: 3558



Option 7K840

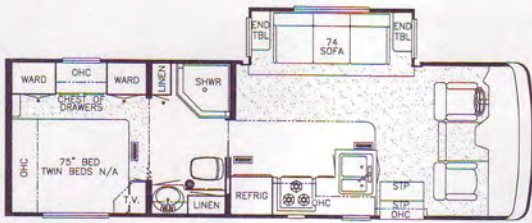
Available in Model: 3760



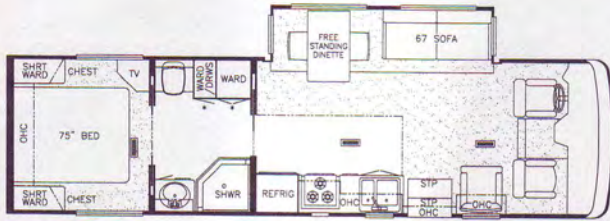
Option 7K930

Available in Model: 3760

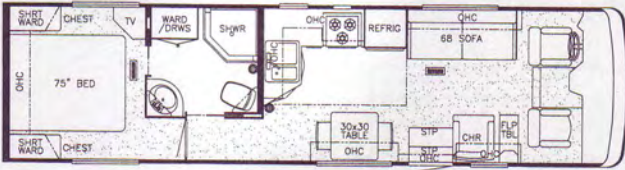
1997 • Floorplans



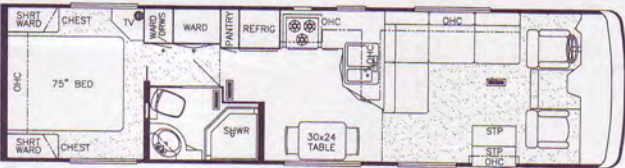
2959



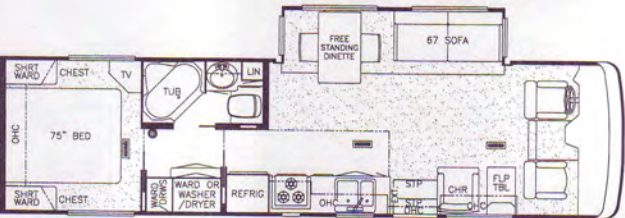
3356



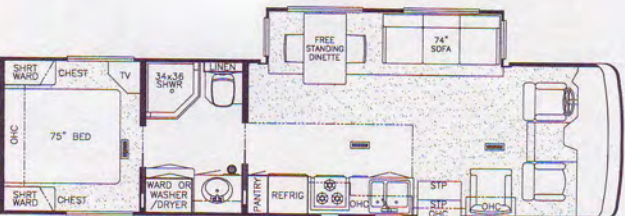
3410



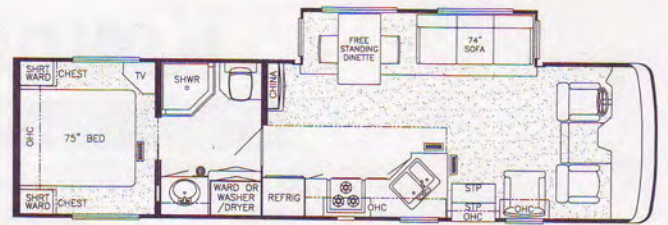
3411



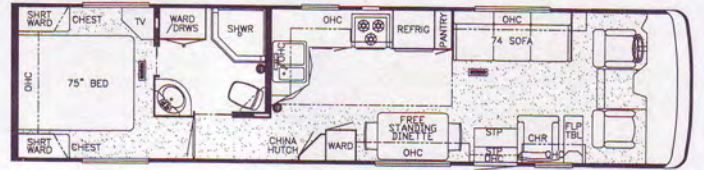
3450



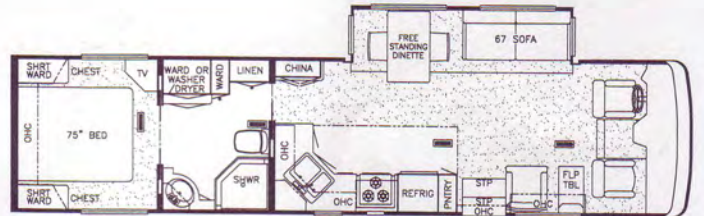
3481



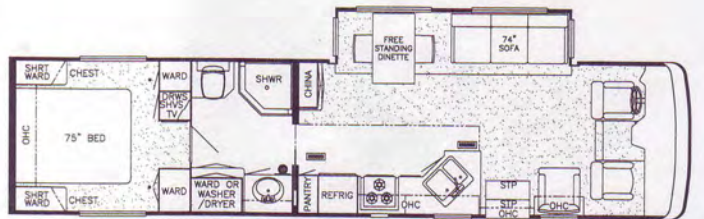
3558



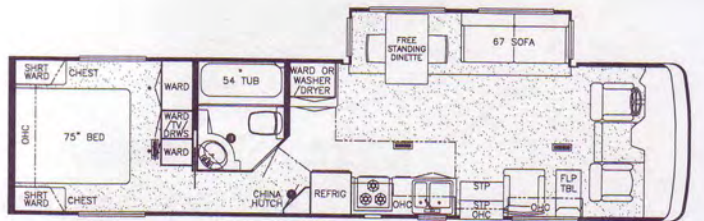
3710



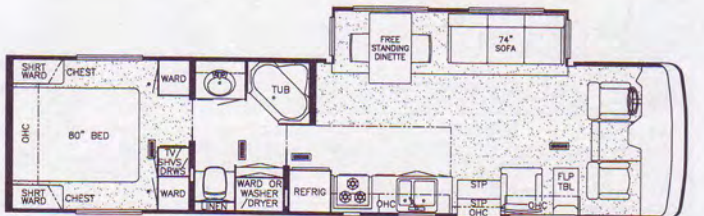
3757



3758



3760



3780

Prices, specifications and floorplans are subject to change at Newmar's discretion without prior written notice or obligation. Some floorplans may show optional chairs or end tables. See your Dealer for availability.

Kountry Star

Class A Motorhomes



Kountry Star® Class A Chevy Chassis Specifications

Model	2959	3410	3411	3450	3481	3558
Chassis	Chevy	Chevy	Chevy	Chevy	Chevy	Chevy
Engine	454	454	454	454	454	454
Axle Ratio	4.63	4.63	4.63	4.63	4.63	4.63
Fuel Cap	80 Gal.	80 Gal.	80 Gal.	80 Gal.	80 Gal.	80 Gal.
Wheel Base	178"	190"+tag	190"+tag	190"+tag	190"+tag	190"+tag
Front GAWR	5,500 lbs.	5,500 lbs.	5,500 lbs.	5,500 lbs.	5,500 lbs.	5,500 lbs.
Rear GAWR	11,000 lbs.	11,000 lbs.	11,000 lbs.	11,000 lbs.	11,000 lbs.	11,000 lbs.
Tag GAWR	—	4,000 lbs.	4,000 lbs.	4,000 lbs.	4,000 lbs.	4,000 lbs.
GVWR	16,500 lbs.	19,000 lbs.	19,000 lbs.	19,000 lbs.	19,000 lbs.	19,000 lbs.
GCWR	21,000 lbs.	21,000 lbs.	21,000 lbs.	21,000 lbs.	21,000 lbs.	21,000 lbs.
Approx. Unloaded Vehicle Wt.	13,672 lbs.	14,702 lbs.	14,752 lbs.	15,602 lbs.	15,677 lbs.	15,881 lbs.
Approx. Net Carrying Cap.	2,828 lbs.	4,298 lbs.	4,248 lbs.	3,398 lbs.	3,223 lbs.	3,119 lbs.

Lengths, Heights, Widths, Dry Weights and Hitch Weights are approximate.

Kountry Star® Class A Freightliner Chassis Specifications

Model	2959	3356	3410	3411	3450	3481	3558	3710	3757	3758	3760	3780
Chassis	Freightliner	Freightliner	Freightliner	Freightliner	Freightliner	Freightliner	Freightliner	Freightliner	Freightliner	Freightliner	Freightliner	Freightliner
Engine	210 H.P.	210 H.P.	210 H.P.	210 H.P.	210 H.P.	210 H.P.	210 H.P.	210 H.P.	210 H.P.	210 H.P.	210 H.P.	210 H.P.
Axle Ratio	3.31	3.31	3.31	3.31	3.31	3.31	3.31	3.31	3.31	3.31	3.31	3.31
Fuel Cap	90 Gal.	90 Gal.	90 Gal.	90 Gal.	90 Gal.	90 Gal.	90 Gal.	90 Gal.	90 Gal.	90 Gal.	90 Gal.	90 Gal.
Wheel Base	178"	200"	216"	216"	216"	216"	216"	228"	228"	228"	228"	228"
Front GAWR	7,000 lbs.	7,000 lbs.	7,000 lbs.	7,000 lbs.	7,000 lbs.	7,000 lbs.	7,000 lbs.	7,000 lbs.	7,000 lbs.	7,000 lbs.	7,000 lbs.	7,000 lbs.
Rear GAWR	13,500 lbs.	13,500 lbs.	13,500 lbs.	13,500 lbs.	13,500 lbs.	13,500 lbs.	13,500 lbs.	13,500 lbs.	13,500 lbs.	13,500 lbs.	13,500 lbs.	13,500 lbs.
GVWR	20,500 lbs.	20,500 lbs.	20,500 lbs.	20,500 lbs.	20,500 lbs.	20,500 lbs.	20,500 lbs.	20,500 lbs.	20,500 lbs.	20,500 lbs.	20,500 lbs.	20,500 lbs.
GCWR	25,500 lbs.	25,500 lbs.	25,500 lbs.	25,500 lbs.	25,500 lbs.	25,500 lbs.	25,500 lbs.	25,500 lbs.	25,500 lbs.	25,500 lbs.	25,500 lbs.	25,500 lbs.
Approx. Unloaded Vehicle Wt.	14,582 lbs.	15,922 lbs.	15,512 lbs.	15,562 lbs.	16,412 lbs.	16,362 lbs.	16,676 lbs.	16,645 lbs.	17,545 lbs.	17,620 lbs.	17,495 lbs.	17,570 lbs.
Approx. Net Carrying Cap.	5,918 lbs.	4,578 lbs.	4,988 lbs.	4,938 lbs.	4,088 lbs.	4,138 lbs.	3,824 lbs.	3,846 lbs.	2,955 lbs.	2,880 lbs.	3,005 lbs.	2,930 lbs.

Lengths, Heights, Widths, Dry Weights and Hitch Weights are approximate.

Kountry Star® Class A Ford Chassis Specifications

Model	2959	3410	3411	3450	3481	3558	3710	3757	3758	3760	3780
Chassis	Ford	Ford	Ford	Ford	Ford	Ford	Ford	Ford	Ford	Ford	Ford
Engine	460	460	460	460	460	460	460	460	460	460	460
Axle Ratio	5.13	5.13	5.13	5.13	5.13	5.13	5.13	5.13	5.13	5.13	5.13
Fuel Cap	75 Gal.	75 Gal.	75 Gal.	75 Gal.	75 Gal.	75 Gal.	75 Gal.	75 Gal.	75 Gal.	75 Gal.	75 Gal.
Wheel Base	178"	190"+tag	190"+tag	190"+tag	190"+tag	190"+tag	190"+tag	212"+tag	212"+tag	212"+tag	212"+tag
Front GAWR	6,000 lbs.	6,000 lbs.	6,000 lbs.	6,000 lbs.	6,000 lbs.	6,000 lbs.	6,000 lbs.	6,000 lbs.	6,000 lbs.	6,000 lbs.	6,000 lbs.
Rear GAWR	11,000 lbs.	11,000 lbs.	11,000 lbs.	11,000 lbs.	11,000 lbs.	11,000 lbs.	11,000 lbs.	11,000 lbs.	11,000 lbs.	11,000 lbs.	11,000 lbs.
Tag GAWR	—	4,000 lbs.	4,000 lbs.	4,000 lbs.	4,000 lbs.	4,000 lbs.	4,000 lbs.	4,000 lbs.	4,000 lbs.	4,000 lbs.	4,000 lbs.
GVWR	17,000 lbs.	20,000 lbs.	20,000 lbs.	20,000 lbs.	20,000 lbs.	20,000 lbs.	20,000 lbs.	20,000 lbs.	20,000 lbs.	20,000 lbs.	20,000 lbs.
GCWR	25,000 lbs.	25,000 lbs.	25,000 lbs.	25,000 lbs.	25,000 lbs.	25,000 lbs.	25,000 lbs.	25,000 lbs.	25,000 lbs.	25,000 lbs.	25,000 lbs.
Approx. Unloaded Vehicle Wt.	14,162 lbs.	15,192 lbs.	15,242 lbs.	16,221 lbs.	16,173 lbs.	16,371 lbs.	16,065 lbs.	17,231 lbs.	17,306 lbs.	17,066 lbs.	17,141 lbs.
Approx. Net Carrying Cap.	2,838 lbs.	4,808 lbs.	4,758 lbs.	3,779 lbs.	3,827 lbs.	3,629 lbs.	3,935 lbs.	2,769 lbs.	2,694 lbs.	2,934 lbs.	2,859 lbs.

Lengths, Heights, Widths, Dry Weights and Hitch Weights are approximate.

Kountry Star

Class A Motorhomes

Kountry Star® Class A Sizes and Capacities

Model	2959	3356	3410	3411	3450	3481	3558	3710	3757	3758	3760	3780
Approx. Overall Length	29'-6"	33'-6"	34'-6"	34'-6"	34'-6"	34'-6"	35'-6"	37'-7"	37'-7"	37'-7"	37'-7"	37'-7"
Overall Width	101"	101"	101"	101"	101"	101"	101"	101"	101"	101"	101"	101"
Approx. Overall Height	11'-8"	11'-8"	11'-8"	11'-8"	11'-8"	11'-8"	11'-8"	11'-8"	11'-8"	11'-8"	11'-8"	11'-8"
Interior Width	95-1/2"	95-1/2"	95-1/2"	95-1/2"	95-1/2"	95-1/2"	95-1/2"	95-1/2"	95-1/2"	95-1/2"	95-1/2"	95-1/2"
Interior Height	78"	78"	78"	78"	78"	78"	78"	78"	78"	78"	78"	78"
Grey Tank	50 Gal.	50 Gal.	50 Gal.	50 Gal.	50 Gal.	50 Gal.	50 Gal.	50 Gal.	50 Gal.	50 Gal.	50 Gal.	50 Gal.
Sewage Tank	50 Gal.	50 Gal.	50 Gal.	50 Gal.	50 Gal.	50 Gal.	50 Gal.	50 Gal.	50 Gal.	50 Gal.	50 Gal.	50 Gal.
Water Tank	56 Gal.	56 Gal.	56 Gal.	56 Gal.	56 Gal.	56 Gal.	56 Gal.	56 Gal.	56 Gal.	56 Gal.	56 Gal.	56 Gal.
L/P Tank	25 Gal.	25 Gal.	25 Gal.	25 Gal.	25 Gal.	25 Gal.	25 Gal.	25 Gal.	25 Gal.	25 Gal.	25 Gal.	25 Gal.
Furnace BTU	30,000	35,000	35,000	35,000	35,000	35,000	35,000	40,000	40,000	40,000	40,000	40,000

Lengths, Heights, Widths, Dry Weights and Hitch Weights are approximate.

Dutch Star

Class A Motorhomes

Kountry Star



1997 Dutch Star® Diesel Pusher



1997 Kountry Star®

Plant Tours Beginning at 10:00 a.m. & 1:00 p.m. Monday-Friday

Newmar Kountry Klub

Don't forget to check out the Klub—the Newmar Kountry Klub, that is. All you need for eligibility is to be a proud owner of any of the fine Newmar recreational vehicles.

Compliments of:



An American Tradition of Excellence.

355 N DELAWARE ST
PO BOX 30
NAPPANEE IN 46550-0030
(219) 773-7791 • FAX (219) 773-2895