



1999 DIESEL PUSHER



1999 CLASS A MOTORHOME





Newmar® is proud to offer you the finest line of recreational vehicles available. Our tradition of designing and building quality recreational vehicles has long been recognized

along with the fact that our own participation in recreational vehicle living gives us the experience and knowledge to build superior products for our customers.

We appreciate your taking the time to look over our brochure and products at our authorized dealer showrooms. We sincerely hope to earn you as one of our many happy

customers who have learned that Newmar® is An American Tradition of Excellence.

Mahlon Miller
Chairman of the Board

We invite you to visit our state of the art production facility in Nappanee, Indiana.

Plant tours are offered at 10:00 a.m. and 1:00 p.m., Monday through Friday.

Newmar Kountry Klub

Don't forget to check out the Klub—the Newmar® Kountry Klub, that is. All you need for eligibility is to be a proud owner of any of the fine Newmar recreational vehicles.

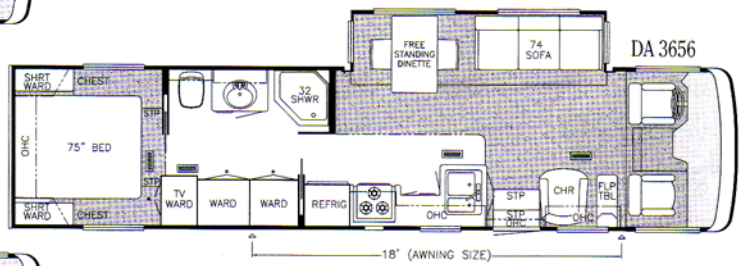
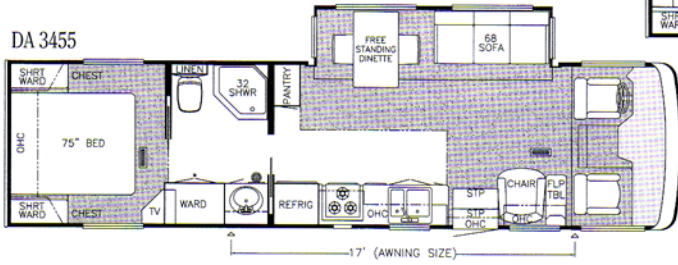
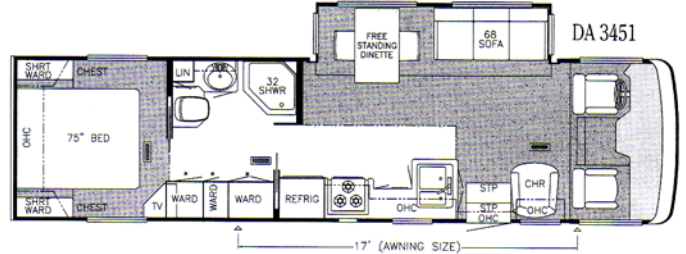
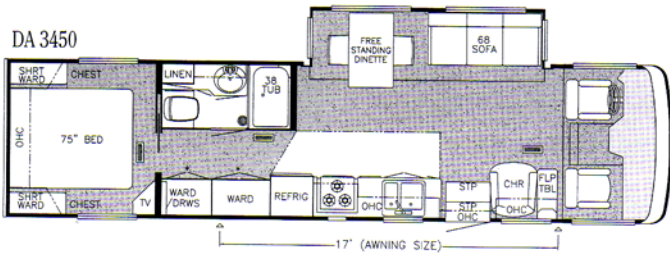
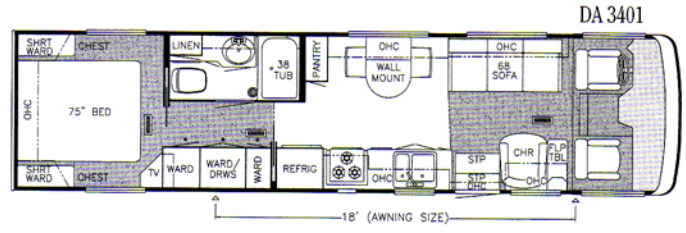
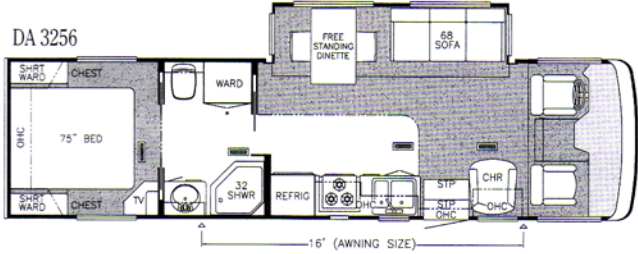
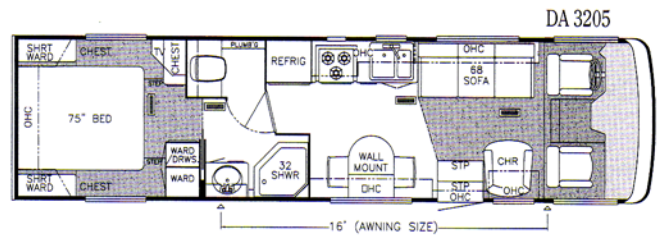
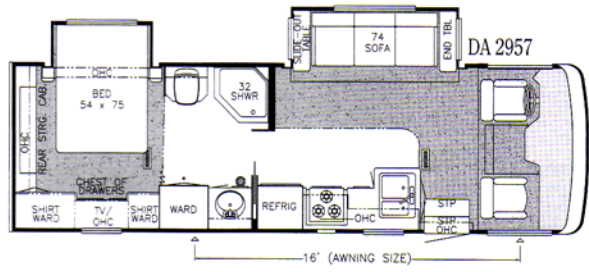


An American Tradition Of Excellence

355 N DELAWARE ST • PO BOX 30
NAPPANEE IN 46550-0030
PHONE 219 773-7791 • FAX 219 773-2895
<http://www.newmarcorp.com>



Compliments of:

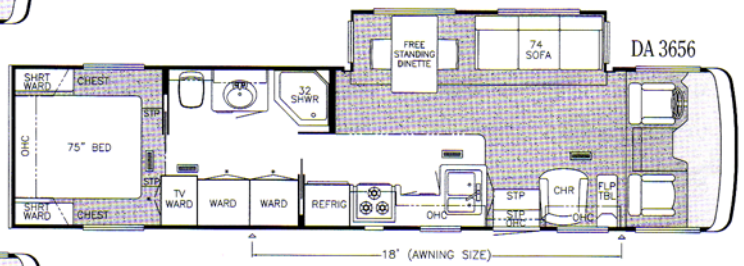
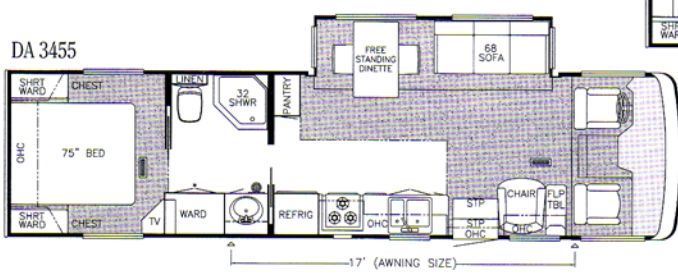
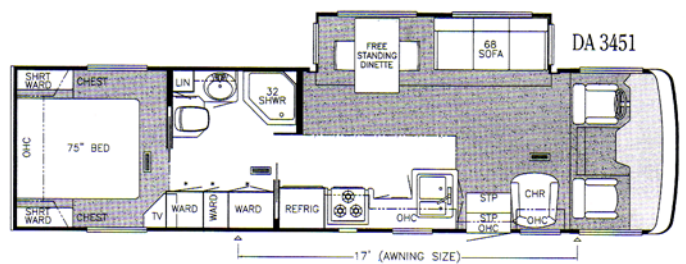
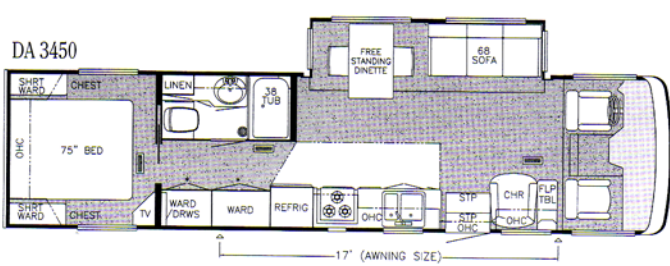
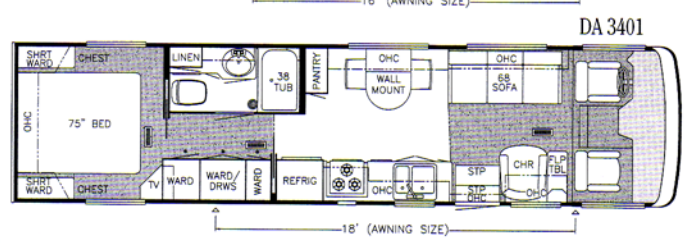
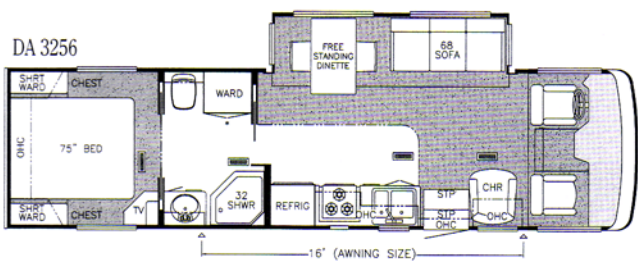
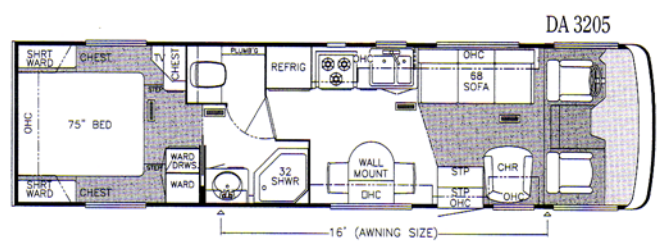
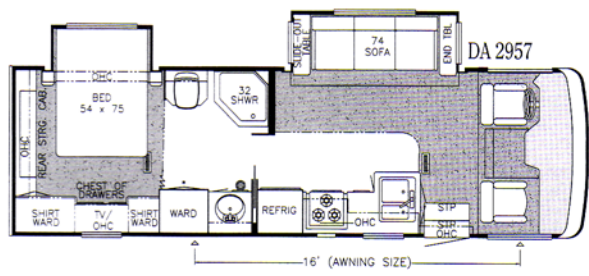


Prices, specifications, and floorplans are subject to change at Newmar's discretion without prior written notice or obligation. Some floorplans may show optional chairs or end tables. See dealer for availability.

DUTCH STAR® CLASS A SIZES & CAPACITIES

Model	DA2957	DA3205	DA3256	DA3401	DA3450	DA3451	DA3455	DA3656
Approx. Overall Length	29'-11"	32'-11"	32'-11"	34'-11"	34'-11"	34'-11"	34'-11"	36'-11"
Overall Width Approx.	100"	100"	100"	100"	100"	100"	100"	100"
Overall Height	11'-5"	11'-5"	11'-5"	11'-5"	11'-5"	11'-5"	11'-5"	11'-5"
Interior Width	94"	94"	94"	94"	94"	94"	94"	94"
Interior Height	78"	78"	78"	78"	78"	78"	78"	78"
Grey Tank (Gal)	40	40	40	40	40	40	40	40
Sewage Tank (Gal)	40	40	40	40	40	40	40	40
Water Tank (Gal)	45	45	45	45	45	45	45	45
L/P Tank (Gal)	25	25	25	25	25	25	25	25
Furnace (btu)	30,000	30,000	30,000	35,000	35,000	35,000	35,000	35,000

Length, Heights, Widths and Dry Weights are Approximate. Weight will vary based on optional equipment added to the above base weight.



Prices, specifications, and floorplans are subject to change at Newmar's discretion without prior written notice or obligation. Some floorplans may show optional chairs or end tables. See dealer for availability.

DUTCH STAR® CLASS A SIZES & CAPACITIES

Model	DA2957	DA3205	DA3256	DA3401	DA3450	DA3451	DA3455	DA3656
Approx. Overall Length	29'-11"	32'-11"	32'-11"	34'-11"	34'-11"	34'-11"	34'-11"	36'-11"
Overall Width Approx.	100"	100"	100"	100"	100"	100"	100"	100"
Overall Height	11'-5"	11'-5"	11'-5"	11'-5"	11'-5"	11'-5"	11'-5"	11'-5"
Interior Width	94"	94"	94"	94"	94"	94"	94"	94"
Interior Height	78"	78"	78"	78"	78"	78"	78"	78"
Grey Tank (Gal)	40	40	40	40	40	40	40	40
Sewage Tank (Gal)	40	40	40	40	40	40	40	40
Water Tank (Gal)	45	45	45	45	45	45	45	45
L/P Tank (Gal)	25	25	25	25	25	25	25	25
Furnace (btu)	30,000	30,000	30,000	35,000	35,000	35,000	35,000	35,000

Length, Heights, Widths and Dry Weights are Approximate. Weight will vary based on optional equipment added to the above base weight.

OPTIONAL FEATURES

AIR CONDITIONING & HEATING WT

- Air Conditioner (2) Penguin 13.5M BTU w/Heat Pump, 5.5 Onan Marquis Generator, 50 154 lbs. AMP Service w/Flex Cord (except Freightliner)
- Air Conditioner (2) Penguin 13.5M BTU w/Heat Pump, 7.0 Onan Marquis Generator & 50 AMP Service/Flex Cord (not available on 2957) 128 lbs.
- Air Conditioner Brisk Air 15M BTU w/Heat Pump in Place of Standard 5 lbs.

APPLIANCES & ACCESSORIES

- Microwave Oven Convection 22" w/3-Burner Hot Plate -16 lbs.
- Rear View Monitor Prep 1 lb.
- Rear View Monitor System 5 lbs.
- Stereo AM/FM CD Player in Place of Standard Dash Stereo 0 lbs.

CABINETS & FURNITURE

- Built-In Booth Dinette w/Drawers in Place of Free Standing Table/Chairs 23 lbs.
- Cabinetry Snow Maple w/Raised Panel Doors 0 lbs.
- Dinette Chairs Two Extra 20 lbs.
- Chair Flexsteel High Back Recliner in Place of Standard 46 lbs.

CABINETS & FURNITURE WT

- Dry Bar in Place of Pantry (available on 3455) 0 lbs.
- Front Seat 6-Way Power on Driver's Side 16 lbs.
- Overhead Cabinet Added in Slideout 75 lbs.
- Sofa Flexsteel Hide-A-Bed in Place of Standard Sofa (not available on 3205, 3401) 52 lbs.

CHASSIS FEATURES

- Optional Chassis-Freightliner Diesel (210 HP Engine)(available on 2957, 3205, 3256, 3401, 3450, 3451, 3455)
- Optional Chassis-Freightliner Diesel (210 HP Engine)(available on 3656)
- Spare Tire 95 lbs.

ELECTRICAL FEATURES

- Lights Exterior Security (one on each side) 2 lbs.
- Surge Protector (120V) 3 lbs.

EXTERIOR FEATURES

- Convex Exterior Mirrors w/Remote Control Defrost, Front Mounted
- Jacks Hydraulic Leveling w/"Touch Manual Control"

INTERIOR FINISHES

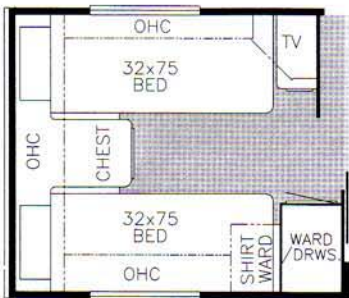
- Carpet Color Change from Standard Package 0 lbs.
- Floor Covering-High Pressure Laminated 15" Tile in Bath 20 lbs.
- Floor Covering-High Pressure Laminated Simulated Plank in Bath 10 lbs.

INTERIOR ACCESSORIES

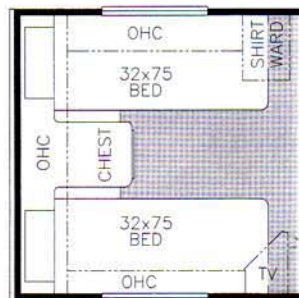
- Assist Handle in Tub/Shower 2 lbs.
- Water Filter (for entire unit) 6 lbs.

OUTSIDE ACCESSORIES

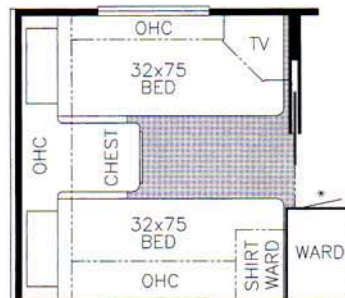
- Awning-Side A&E 8500 110# lbs.
- Radius Windows w/Double Pane Dark Tinted Safety Glass (not available on driver/passenger area) 93 lbs.
- Vent-Fantastic w/Rain Sensor in Kitchen...11 lbs.



Option K088
75" Twin beds
Available in:
DA 3205



Option K090
75" Twin beds
Available in:
DA 3256, 3401, 3450, 3451, 3455



Option K091
75" Twin beds
Available in:
DA 3656



Option K210
Dry bar ilo pantry
Available in:
DA 3655

DUTCH STAR® CLASS A CHASSIS SPECIFICATIONS

Model	DA2957	DA3205	DA3256	DA3401	DA3450	DA3451	DA3455	DA3656
Chassis	FreightLiner	FreightLiner	FreightLiner	FreightLiner	FreightLiner	FreightLiner	FreightLiner	FreightLiner
Engine	210 HP	210 HP	210 HP	210 HP	210 HP	210 HP	210 HP	210 HP
Axle Ratio	3.31	3.31	3.31	3.31	3.31	3.31	3.31	3.31
Fuel Cap (Gal)	60	90	90	90	90	90	90	90
Wheel Base	172"	200"	200"	216"	208"	208"	208"	228"
Front GAWR (lbs)	7,000	7,000	7,000	7,000	7,000	7,000	7,000	7,000
Rear GAWR (lbs)	13,500	13,500	13,500	13,500	13,500	13,500	13,500	13,500
GVWR (lbs)	20,500	20,500	20,500	20,500	20,500	20,500	20,500	20,500
GCWR (lbs)	25,500	25,500	25,500	25,500	25,500	25,500	25,500	25,500
Approx. Unloaded Vehicle Wt. (lbs)	15,890	15,310	16,060	15,800	16,590	16,530	16,550	17,670
Approx. Net Carrying Capacity (lbs)	4,610	5,190	4,440	4,700	3,910	3,970	3,950	2,830

Length, Heights, Widths and Dry Weights are Approximate. Weight will vary based on optional equipment added to the above base weight.

Air Conditioner Central Brisk Air 15M BTU
Heat In Floor Ducted

Cable TV Connection
Carbon Monoxide Detector
CB Antenna
Color TV-19"
LP Leak Detector
Microwave Oven 22"
Range Cover Laminated w/Matching
Countertop Material
Range Hood w/Light & Fan
Range Recessed 3-Burner w/Black Glass
Oven Door & Piezzo Ignition
Refrigerator Dometic Americana 2852.2 (8 cu. ft.)
Satellite Dish Prep Only-w/RG 6 Coaxial,
Phone/TV Jack & 110V Recept
Stereo AM/FM Cassette w/Clock (in dash)
Telephone Connection w/1 Phone Jack
TV Antenna w/Power Booster & 2 Jacks
TV Jack for Exterior Use on Door Side
VCR Prep w/TV Video Selector Switch
Water Heater 6 Gal. Gas w/Direct Spark Ignition

Chair Flexsteel Swivel Barrel
Corian Countertop in Kitchen w/Color
Coordinated Edge & Stainless Steel Sink
Countertop Extension
(available on 3256, 3401, 3450, 3455)
Drawers w/Metal Guides
Front Seats Flexsteel Fabric Swivel/Recline
w/3 Point Seat Belt
Laminate Countertop w/Color Coordinated
Edge & Porcelain Lavatory Bowl in Bath
Molded Silverware Divider Tray
Oak Raised Panel Cabinet Doors
Sofa Flexsteel Jack Knife

Standard Chassis-Ford F-53 (6.8L V-10 Engine)
Cruise Control
Dash Heater/Air Conditioner High Output
Steering Wheel Tilt
Wheel Simulators-Stainless Steel

Battery (2-12V) on Pull-Out Tray
Battery Disconnect (for house battery)
Converter 75 AMP w/Charger
Electrical Service 30 AMP
Generator 4.0 KW Onan Microlite
w/One Remote Switch
Lights Driving
Lights in Exterior Storage Compartments
Solar Panel 5 Watt to Charge Chassis Battery
Switch for Emergency Chassis Engine Start

Convex Exterior Mirrors (driver-side
mount-passenger-front mount)
Exterior Front and Rear Gel-Coated
Fiberglass End Caps
Exterior Sides Gel-Coated Fiberglass
Hitch for Towing Car (w/2 extra 14 gauge
wires for customer use)(class-2, 5000# rating)
Mud Flaps (front & rear)
Roof & Top Wrap Rubber w/9MM Decking
Roof Rack & Ladder
Slideout Large w/Patented Flat Floor
Undercoating

Decorative Border in Kitchen Area
Decorative Wall Clock & Mirror
Entrance Door Trimmed w/Hardwood
Floor Covering-Carpet w/High Density Pad
Floor Covering-High Pressure Laminated
Simulated Plank in Kitchen Area

Floor Covering-Vinyl in Bath
Sink Cover-One
Smoke Detector & 10 BC Fire Extinguisher
Window Treatment Day/Night Pleated
Shades & Lamberquins

Bath Accessories White (2 towel bars, 1 tissue holder)
Monitor Panel
Sewage Holding Tank Rinse
Sewage Hose Holder (easy access flop down tray)
Shower Exterior (on off door side)
Stool China w/Spray Attachment
Tub/Shower Surround w/Enclosure
Winterize Convenience Package
(w/water heater bypass)

Insulation Fiberglass R7 Sidewalls, Floor & Roof
Insulation Foam 5/8" Laminated in
Sidewalls & Ceiling
Structure-99 1/2" Widebody
Structure-Aluminum Sidewalls & Roof,
16" On Center

Exterior Lighted Acrylic Assist Handle
(at main entrance door)
Radius Windows w/Dark Tinted Safety Glass
Skylight in Bathroom
Step-Automatic (double on Ford-single on
Freightliner)
Vent-Power in Bath Area w/Wall Switch

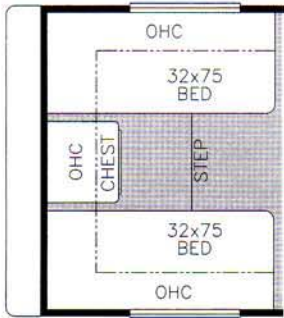
Bedsread Quilted w/Reversed Sham (1)
Lifts for Convenient Storage Under Fixed Beds
Slideout in Bedroom (available on 2957)

DUTCH STAR® CLASS A CHASSIS SPECIFICATIONS

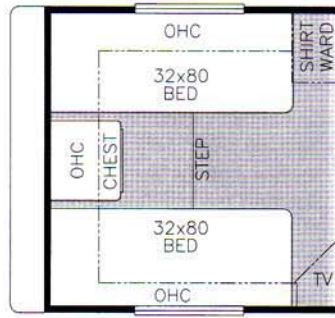
Model	DA2957	DA3205	DA3256	DA3401	DA3450	DA3451	DA3455	DA3656
Chassis	Ford	Ford	Ford	Ford	Ford	Ford	Ford	Ford
Engine	6.8L V10 275 HP	6.8L V10 275 HP	6.8L V10 275 HP	6.8L V10 275 HP	6.8L V10 275 HP	6.8L V10 275 HP	6.8L V10 275 HP	6.8L V10 275 HP
Axle Ratio	5.38	5.38	5.38	5.38	5.38	5.38	5.38	5.38
Fuel Cap (Gal)	75	75	75	75	75	75	75	75
Wheel Base	172"	200"	200"	216"	208"	208"	208"	228"
Front GAWR (lbs)	7,000	7,000	7,000	7,000	7,000	7,000	7,000	7,000
Rear GAWR (lbs)	11,000	11,000	11,000	11,000	11,000	11,000	11,000	13,500
GVWR (lbs)	18,000	18,000	18,000	18,000	18,000	18,000	18,000	20,500
GCWR (lbs)	26,000	26,000	26,000	26,000	26,000	26,000	26,000	26,000
Approx. Unloaded Vehicle Wt. (lbs)	15,390	14,760	15,510	15,200	15,990	15,930	15,950	16,970
Approx. Net Carrying Capacity (lbs)	2,610	3,490	2,490	2,800	2,010	2,070	2,050	3,530

Length, Heights, Widths and Dry Weights are Approximate. Weight will vary based on optional equipment added to the above base weight.

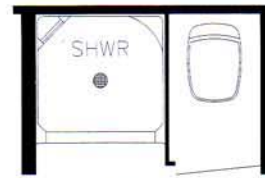
STANDARD FEATURES



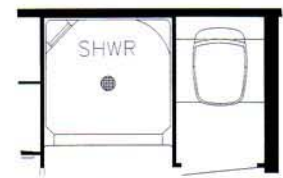
Option K103
75" Twin beds
Available in:
DP 3858, 3862, 3865



Option K104
75" Twin beds
Available in:
DP 3884



Option P203
Enclosed stool w/straight shower
Available in:
DP 3858



Option P204
Enclosed stool w/straight shower
Available in:
DP 3865

DIESEL PUSHER OPTIONAL FEATURES



Prices, specifications, and floorplans are subject to change at Newmar's discretion without prior written notice or obligation. Some floorplans may show optional chairs or end tables. See dealer for availability.

DUTCH STAR® DIESEL PUSHER FREIGHTLINER CHASSIS SPECIFICATIONS

Model	DP3858	DP3862	DP3865	DP3884
Chassis	FreightLiner XC	FreightLiner XC	FreightLiner XC	FreightLiner XC
Engine	CAT 300	CAT 300	CAT 300	CAT 300
Axle Ratio	4.63	4.63	4.63	4.63
Fuel Cap (Gal)	100	100	100	100
Wheel Base	252"	252"	252"	252"
Front GAWR (lbs)	10,400	10,400	10,400	10,400
Rear GAWR (lbs)	17,000	17,000	17,000	17,000
GVWR (lbs)	27,400	27,400	27,400	27,400
GCWR (lbs)	32,400	32,400	32,400	32,400
Approx. Unloaded Vehicle Wt. (lbs)	22,000	21,860	22,040	21,990
Approx. Net Carrying Capacity (lbs)	5,400	5,540	5,360	5,410

Length, Heights, Widths and Dry Weights are Approximate. Weight will vary based on optional equipment added to the above base weight.

DUTCH STAR® DIESEL PUSHER SPARTAN CHASSIS SPECIFICATIONS

Model	DP3858	DP3862	DP3865	DP3884
Chassis	Spartan IC	Spartan IC	Spartan IC	Spartan IC
Engine	CUM 300	CUM 300	CUM 300	CUM 300
Axle Ratio	4.78	4.78	4.78	4.78
Fuel Cap (lbs)	100	100	100	100
Wheel Base	252"	252"	252"	252"
Front GAWR (lbs)	10,400	10,400	10,400	10,400
Rear GAWR (lbs)	17,000	17,000	17,000	17,000
GVWR (lbs)	27,400	27,400	27,400	27,400
GCWR (lbs)	37,400	37,400	37,400	37,400
Approx. Unloaded Vehicle Wt. (lbs)	22,380	22,240	22,420	22,370
Approx. Net Carrying Capacity (lbs)	5,020	5,160	4,980	5,030

DIESEL PUSHER FLOORPLANS

Air Conditioner Brisk Air 15M BTU w/Heat Pump (extra) 100 lbs.
 Air Conditioner Brisk Air 15M BTU w/Heat Pump in Place of Standard 5 lbs.
 Air Conditioner Central Penguin 13.5M BTU w/Heat Pump (1) in Place of Standard 5 lbs.
 Air Conditioner Central Penguin 13.5M BTU w/Heat Pump (extra) 100 lbs.
 Auxiliary Heater in Bedroom 20 lbs.

Air Horn 5 lbs.
 CB Radio 2 lbs.
 CD Player - Remote 10 Disc Changer w/Surround Sound 15 lbs.
 CD Player-Remote 10 Disc Changer w/Amplifier & Subwoofer 10 lbs.
 Ceiling Fan (in bedroom area) 10 lbs.
 Cellular Telephone Antenna 1 lb.
 Coffee Maker 5 lbs.
 Color TV-13" AC 24 lbs.
 Freezer 100# Norcold AC/DC (on slides) in Exterior Storage Compartment 113 lbs.
 Freezer 75# Norcold DC (on slides) in Exterior Storage Compartment 100 lbs.
 Home Theater System w/Desk in Place of Standard Features 100 lbs.
 Icemaker Added to Dometic Refrigerator 5 lbs.
 Icemaker U Line 57 lbs.
 Microwave Oven Convection 22" w/3-Burner Hot Plate -16 lbs.
 Microwave Oven Convection 30" w/3-Burner Hot Plate 13 lbs.
 Refrigerator Dometic 1062 (10 cu. ft.) 91 lbs.
 Refrigerator Dometic Royale 3862 (8 cu. ft.) 5 lbs.
 Refrigerator Dometic Side-By-Side 7832 w/Absorption Icemaker (10 cu. ft.)
 Satellite Dish (Winegard) w/Automatic Seeking System (does not include DSS receiver) 70 lbs.
 Satellite Dish (Winegard) w/Manual System (does not include DSS receiver) 13 lbs.
 Satellite Dish Prep Only-w/RG 6 Coaxial, Phone/TV Jack & 110V Recept 2 lbs.
 Security System 2 lbs.
 Speaker Switch System (between dash area TV & stereo) 1 lb.
 Stereo AM/FM CD Player in Place of Standard Dash Stereo 0 lbs.
 Telephone Connection w/1 Phone Jack 1 lb.
 Telephone Jack Interior, Extra 1 lb.
 TV Jack for Exterior Use on Door Side 1 lb.
 TV Jack, Extra 1 lb.
 VCR-4 Head 11 lbs.
 Washer/Dryer Compact One Piece 185 lbs.
 Washer/Dryer Prep 22 lbs.
 Washer/Dryer Sears Two Piece 232 lbs.
 Water Heater 10 Gal. Gas/Electric, Direct Spark Ignition & Engine Assist 10 lbs.

Built-In Booth Dinette w/Drawers in Place of Free Standing Table/Chairs 23 lbs.
 Cabinetry Cherry Hardwood w/Raised Panel Doors w/Raised Panel Doors 25 lbs.
 Cabinetry Oak Hardwood 25 lbs.

Chair Flexsteel High Back Recliner w/Headrest in Place of Standard Chair 46 lbs.
 Chair Flexsteel High Back Recliner w/Headrest Leather/Vinyl in Place of Standard Chair 56 lbs.
 Chair Flexsteel Large Free Standing Recliner Leather/Vinyl in Place of Standard Chair 73 lbs.
 Dinette Chairs Two Extra 20 lbs.
 Dinette Table Hidden Leaf in Place of Free Standing Table 50 lbs.
 Folding Coffee Table 20 lbs.
 Front Seat 6-Way Power 16 lbs.
 Front Seats Flexsteel Leather/Vinyl w/6-Way Power Lumbar Support & Oversized Passenger Seat w/Footrest 68 lbs.
 Front Seats Flexsteel Leather/Vinyl w/6-Way Power Lumbar Support/Ergo-Flex Arms & Passenger Footrest 38 lbs.
 Overhead Cabinet Added in Slideout 75 lbs.
 Pull-Out Pantry 10 lbs.
 Sofa Flexsteel Hide-A-Bed in Place of Standard Sofa 52 lbs.
 Sofa Flexsteel Hide-A-Bed Leather/Vinyl in Place of Standard Sofa 52 lbs.
 Sofa Flexsteel L-Lounge Leather/Vinyl w/Incliner in Place of Chair & Stand 50 lbs.
 Sofa Flexsteel Magic Bed in Place of Standard Sofa 20 lbs.
 Sofa Flexsteel Magic Bed Leather/Vinyl in Place of Standard Sofa 20 lbs.
 Wood Doors & Shelves on China Cabinet in Place of Standard 8 lbs.

Optional Chassis-Freightliner X-Line 300 HP

Battery (2-6V) Extra 128 lbs.
 Generator 7.0 KW Power Tech (diesel) Quiet Series on Slides in Place of Standard Generator 195 lbs.
 Generator 7.5 KW Onan (diesel) Quiet Series on Slides in Place of Standard Generator 230 lbs.
 Inverter 400 Watt (for dash TV & VCR) 10 lbs.
 Inverter/Converter (Heart Freedom 20) 50 lbs.
 Inverter/Converter (Heart Freedom 20) w/Two Additional 6V Batteries 178 lbs.
 Light Spot w/Remote Control 3 lbs.
 Lighting Fluorescent Recessed in Ceiling & Overhead Cabinets 1 lb.
 Lights Docking 4 lbs.
 Lights Driving 2 lbs.
 Lights Exterior Security (one on each side) 2 lbs.
 Lights Exterior Security (two on each side) 4 lbs.
 Recept 110V & 12V Line in Exterior Storage Compartment (pre-wired for freezer) 1 lb.
 Recept 110V 1 lb.
 Recept 12V 1 lb.
 Surge Protector (120V) 3 lbs.
 Switched Recept for Engine Block Heater 1 lb.
 Convex Exterior Mirrors w/Remote Control & Defrost, Front Mounted 4 lbs.
 Front End Protective Vinyl Mask 35 lbs.

Rear Protective Tow Guard 55 lbs.
 Roof & Top Wrap Gel-Coated Fiberglass w/1/4" Foam Insulation 2 lbs.

Carpet Color Change from Standard Package 0 lbs.
 Center Entrance Door Layout 0 lbs.
 Entrance Door Trimmed w/Hardwood 5 lbs.
 Floor Covering-Ceramic Tile in Bath Area 75 lbs.
 Floor Covering-Ceramic Tile in Kitchen Area 35 lbs.
 Floor Covering-High Pressure Laminated 15" Tile in Bath 10 lbs.
 Floor Covering-High Pressure Laminated 15" Tile in Kitchen Area 30 lbs.
 Floor Covering-High Pressure Laminated Simulated Plank in Bath 10 lbs.
 Floor Covering-High Pressure Laminated Simulated Plank in Kitchen Area 30 lbs.
 Floor Covering-Vinyl in Bath -20 lbs.
 Floor Covering-Vinyl in Kitchen Area -20 lbs.
 Sun Shade on Side Window 2 lbs.

Assist Handle in Tub/Shower 2 lbs.
 Heat Pads for Holding Tanks 110V 2 lbs.
 Sewage Holding Tank Rinse 1 lb.
 Shower Exterior (on off door side) 2 lbs.
 Stool China w/Spray Attachment 31 lbs.
 Stool Room Enclosed w/Straight Shower 35 lbs.
 Stool Room Enclosed w/Straight Shower 35 lbs.
 Water Filter (for entire unit) 6 lbs.
 Water Filter w/Drink Dispenser (kitchen) 5 lbs.

Awning-At Front Entrance Door Carefree 12 lbs.
 Awning-Front Entrance Door A&E 12 lbs.
 Awning-Side A&E 8500 110 lbs.
 Awning-Side A&E 9000 128 lbs.
 Awning-Side Carefree Spirit Limited 128 lbs.
 Awning-Side Tension Rafter (shipped loose) 5 lbs.
 Awning-Slideout Cover A&E 25 lbs.
 Awning-Slideout Cover Carefree (w/full view window awning) 35 lbs.
 Awning-Window A&E 8500 5 lbs.
 Awning-Window A&E 9000 5 lbs.
 Awning-Window Carefree Spirit Limited 5 lbs.
 Door Bell 2 lbs.
 Door Driver's Side w/Power Window 50 lbs.
 Radius Windows w/Double Pane Dark Tinted Safety Glass (not available on driver/passenger area) 93 lbs.
 Vent-Fantastic w/Rain Sensor 11 lbs.
 Vent-Fantastic w/Rain Sensor in Place of Standard Bath Vent 11 lbs.
 Vent-Fantastic w/Rain Sensor, Vented Through Central Air Duct 11 lbs.

STANDARD FEATURES

AIR CONDITIONING & HEATING

Air Conditioner Central Penguin 13.5M BTU
Heat In Floor Ducted

APPLIANCES & ACCESSORIES

- Cable TV Connection
- Carbon Monoxide Detector
- CB Antenna
- Color TV-19"
- LP Leak Detector
- Microwave Oven 22" (not available on 3865)
- Microwave Oven Non-Convection 30" (available on 3865)
- Range Cover Laminated w/Matching Countertop Material
- Range Hood w/Light & Fan (not available on 3865)
- Range Recessed 3-Burner w/Black Glass Oven Door & Piezzo Ignition
- Rear View Monitor System
- Refrigerator Dometic Americana 2852.2 (8 cu. ft.)
- Stereo AM/FM Cassette w/Clock (in dash)
- TV Antenna w/Power Booster & 2 Jacks
- VCR Prep w/TV Video Selector Switch
- Water Heater 10 Gal. Gas/Electric w/Direct Spark Ignition

INTERIOR

- Chair Flexsteel Swivel Barrel
- Corian Countertop Color Coordinated Edge & Integrated Porcelain Lavatory Bowl in Bath
- Corian Countertop in Kitchen w/Color Coordinated Edge & Stainless Steel Sink
- Drawers w/Metal Guides
- Front Seats Flexsteel Fabric Swivel/Recline w/3 Point Seat Belt
- Molded Silverware Divider Tray
- Oak Raised Panel Cabinet Doors
- Sofa Flexsteel Jack Knife

Chassis-Spartan Highlander 300 HP Raised Rail w/Independent Front Suspension

EXTERIOR EQUIPMENT

- Back-Up Alarm
- Cruise Control
- Dash Heater/Air Conditioner High Output
- Recessed Fuel Fill w/Locking Door (one on each side)
- Steering Wheel Tilt & Telescope
- Wheel Simulators-Stainless Steel

TRAILER EQUIPMENT

- Battery (2-6V)
- Battery Disconnect (for house battery)
- Converter 75 AMP w/Charger
- Electrical Service 50 AMP w/Flexible Cord
- Generator 7.0 KW Onan Marquis w/LP Conversion & Automatic Changeover
- ICC Light Flasher Switch
- Lights in Exterior Storage Compartments
- Midship Side Turn Signals
- Recepts 110V w/Ground Fault Interrupter (interior & exterior)
- Solar Panel 5 Watt to Charge Chassis Battery
- Switch for Emergency Chassis Engine Start

EXTERIOR EQUIPMENT

- Convex Exterior Mirrors (driver-side mount-passenger-front mount)
- Exterior Front & Rear Gel-Coated Fiberglass End Caps
- Exterior Sides Gel-Coated Fiberglass
- Hitch for Towing Car (w/2 extra 14 gauge wires for customer use)(class-2, 5000# rating)
- Jacks Hydraulic Leveling w/"Touch" Manual Control
- Mud Flaps (front & rear)
- Roof Rack & Ladder
- Roof Rubber w/9MM Decking
- Slideout Large w/Patented Flat Floor (see floorplans for availability & layout)
- Undercoating

EXTERIOR

- Ceiling Woven Soft Touch
- Decorative Border in Kitchen Area
- Decorative Wall Clock & Mirror
- Floor Covering-Carpet Staintech, 40 oz. 100% Nylon Plush Saxony w/Stainmaster Finish
- Floor Covering-Carpet w/High Density Pad
- Hardwood Fascia on Slideout
- Sink Cover-One
- Smoke Detector & 10 BC Fire Extinguisher
- Window Treatment Day/Night Pleated Shades & Lamberquins
- Window Treatment Mini Blinds (kitchen)

BATH ACCESSORIES

- Bath Accessories White (2 towel bars, 1 tissue holder)
- Monitor Panel
- Stool Aqua Magic IV
- Tub/Shower Fiberglass w/Enclosure
- Winterize Convenience Package (w/water heater bypass)

INSULATION

- Insulation Fiberglass R7 Sidewalls & Floor, R11 Roof
- Insulation Foam 5/8" Laminated in Sidewalls & Ceiling
- Structure 101" Widebody
- Structure-Aluminum Sidewalls & Roof, 16" On Center

- Front Entry Door w/Power Stepwell Cover
- Radius Windows w/Dark Tinted Safety Glass
- Skylight in Bathroom w/Soft Shade
- Step-Automatic Double
- Vent-Power in Bath Area w/Wall Switch

- Bedspread Quilted w/Reversed Sham & Accent Pillow
- Lifts for Convenient Storage Under Fixed Beds

DUTCH STAR® DIESEL PUSHER SIZES & CAPACITIES

MODEL	DP3858	DP3862	DP3865	DP3884
Approx. Overall Length	38'-0"	38'-0"	38'-0"	38'-0"
Overall Width	101"	101"	101"	101"
Approx. Overall Height	11'-8"	11'-8"	11'-8"	11'-8"
Interior Width	95 1/2"	95 1/2"	95 1/2"	95 1/2"
Interior Height	78"	78"	78"	78"
Grey Tank (Gal)	65	65	65	65
Sewage Tank (Gal)	45	45	45	45
Water Tank (Gal)	105	105	105	105
L/P Tank (Gal)	32	32	32	32
Furnace (Gal)	40,000	40,000	40,000	40,000

Length, Heights, Widths and Dry Weights are Approximate. Weight will vary based on optional equipment added to the above base weight.

S P E C I F I C A T I O N S



1999 DIESEL-PUSHER



1999 CLASS A MOTORHOME





1999 DIESEL PUSHER

1999 CLASS A MOTORHOME

Newmar® is proud to offer the finest line of recreational vehicles available. Our tradition of designing and building quality recreational vehicles has long been recognized along with the

fact that our own participation in recreational vehicle living gives us the experience and knowledge to build superior products for our customers.

We appreciate the time you took in looking over our brochure and products at our authorized dealer showrooms. We sincerely hope you will become one of our

many happy customers who have learned that Newmar® is An American Tradition of Excellence.

Mahlon Miller
Chairman of the Board

We invite you to visit our state of the art production facility in Nappanee, Indiana.

Plant tours are offered at 10:00 a.m. and 1:00 p.m., Monday through Friday.

Newmar Kountry Klub

Don't forget to check out the Klub—the Newmar® Kountry Klub, that is. All you need for eligibility is to be a proud owner of any of the fine Newmar® recreational vehicles.



An American Tradition Of Excellence

355 N DELAWARE ST • PO BOX 30
NAPPANEE IN 46550-0030
PHONE 219 773-7791 • FAX 219 773-2895
<http://www.newmarcorp.com>



Compliments of:



1999 CLASS A MOTORHOME

A solid focus on excellence guides every decision at Newmar®, a major force in the recreational vehicle marketplace for over 31 years. From top management to the newest employee, the goal is well understood - this Newmar®

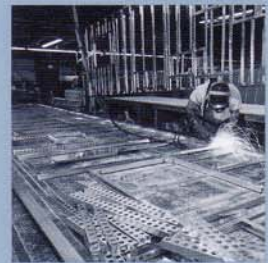
product is going to be owned by a person who deserves the best we can produce. That is what we promise, and that is what we deliver.

NEWMAR
PRIDE SHOWS
IN EVERY CABINET
WE BUILD



Our cabinet shop is a true source of Newmar's pride in skilled craftsmanship, where each piece is created on-site, by caring hands.

STRENGTH
AND
DURABILITY



The welded aluminum sidewall construction is built with 16" on center framing, providing the strongest and most durable construction possible.



Truss-style rafters are built 16" on center and central air conditioning duct work is incorporated into the design.



A full coverage of fiberglass insulation completes the insulation process, creating a composite R value as high as R22.

NEWMAR SLIDEOUT A TRAVELING SUCCESS



There are a lot of slideout rooms, but there is just one Newmar®. It's a Newmar® exclusive. We pioneered it in 1990, we perfected it. To prove it, we urge you to visit your Newmar® dealer. He will show you the Newmar® difference.



You will see the room move to its full extension. Instead of stopping—the entire room quietly lowers to the same level matching the main floor... FLAT, FLUSH and FIRM. That's why it's patented.



1999 DIESEL PUSHER

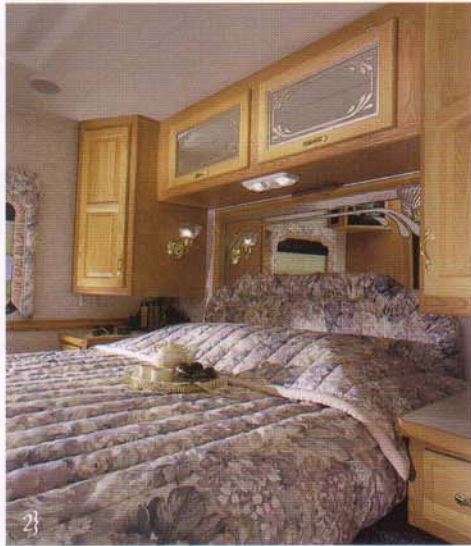
WE USE TECHNOLOGY TO THE FULLEST



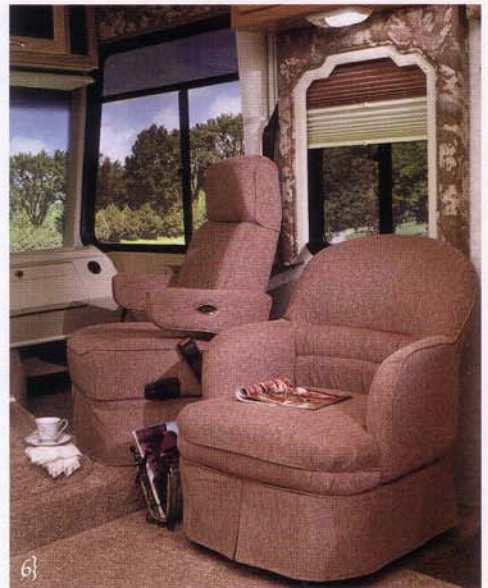
Newmar® engineers are specially trained on the latest CAD systems to continually provide new and innovative approaches to their designs.

Newmar's image and reputation as the very best among recreational vehicles is the direct result of aiming for perfection. While much of today's emphasis seems to be placed on cutting corners, Newmar® continues to insist

on first class quality and long term dependability. For Newmar® owners, this translates into more pleasure and personal satisfaction.



1} Elegant, clean and complete with luxury appointments are how we describe the Dutch Star® Class A. With the push of a button, you can expand your luxury with our patented flush floor slideout. 2} The Dutch Star® master bedroom has deeper overhead cabinets for added storage room. 3} You are in command with comfort and style in the Dutch Star® Class A. 4} We've lowered the microwave for easy access and made our beautiful Corian® countertops standard equipment on the Dutch Star® Class A. 5} Trackless nylon carpet and beautiful furniture blend harmoniously with the Dutch Star's interior decor. 6} Sit back and relax in furniture designed for comfort without sacrificing style.





For over three decades, Newmar® has been building America's most popular motorhomes. Right from the start, discriminating, experienced buyers recognized that a Dutch Star® motorhome was something special. In a world of cookie-cutter products, Dutch Star® has always stood out for its features, performance and unparalleled quality.

And while we're proud of our tradition of excellence, we won't

rest on our laurels. We're constantly refining our products to make them even better. We believe the Dutch Star® models featured in this catalog are the finest we've ever built. And we back them with the industry's best warranty. Quality.

Performance. Lasting value. They've made Dutch Star® An American Tradition of Excellence.

Our Dutch Star® Class A lineup boasts eight superb models from 29 to 36 feet in length.

There are two external graphic packages available and inside, all Dutch Star's Class A models now feature a roomy 94" wide interior. There are four new interiors in two colors that blend perfectly with your choice of Light

Honeyed Oak or Snow Maple woodgrains. No matter what model or color Dutch Star® you choose, we're confident you will become another satisfied customer who learned of Dutch Star's proud tradition.

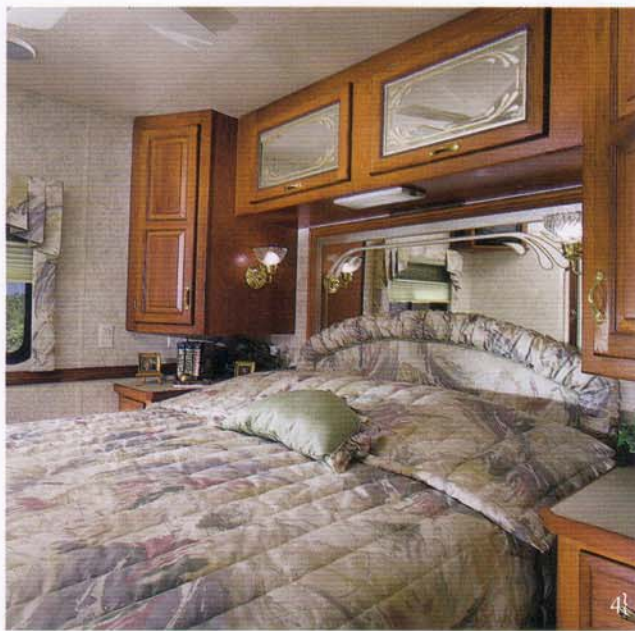




2}



3}



4}

1} There is truly room to live in this handsome slideout room that features our patented flat, flush floor. 2} Relax in Dutch Star® style with this L-sofa. 3} Dash and controls are easily accessible from the luxurious comfort of the large driver's seat. 4} Deeper overhead cabinets were designed to add more storage space in the master bedroom. 5} Our fully appointed kitchen has all the comforts of home. The range features sealed burners and piezo ignition. The countertops are Corian® - a Dutch Star® standard. 6} Carefully chosen and matched color schemes complement the warm complexion of our handcrafted cabinetry. You never have to sacrifice comfort on the road with Dutch Star's recliner.



5}



6}



A lot of motorhomes are great looking. But it's the details that separate Dutch Stars® from the also-rans. Sure, our legendary motorhomes have great exteriors and luxurious interiors. But take a closer look and you'll discover painstaking attention to detail that runs more than skin deep.

Because our motorhomes are built better, every Dutch Star® carries our famous three year warranty. We start with the finest materials available and compromise nothing in designing and building the best Diesel Pusher on the market. The 1999 Dutch Star® Diesel Pusher line-up features four

excellent models that are available in 38 foot lengths. We offer five interior color packages to blend your taste with the rich elegance of wood in Snow Maple, Light

Honeyed Oak or Cherry. Discover Newmar's passion for detail and luxury that is proudly displayed in the Dutch Star® Diesel Pusher.

