

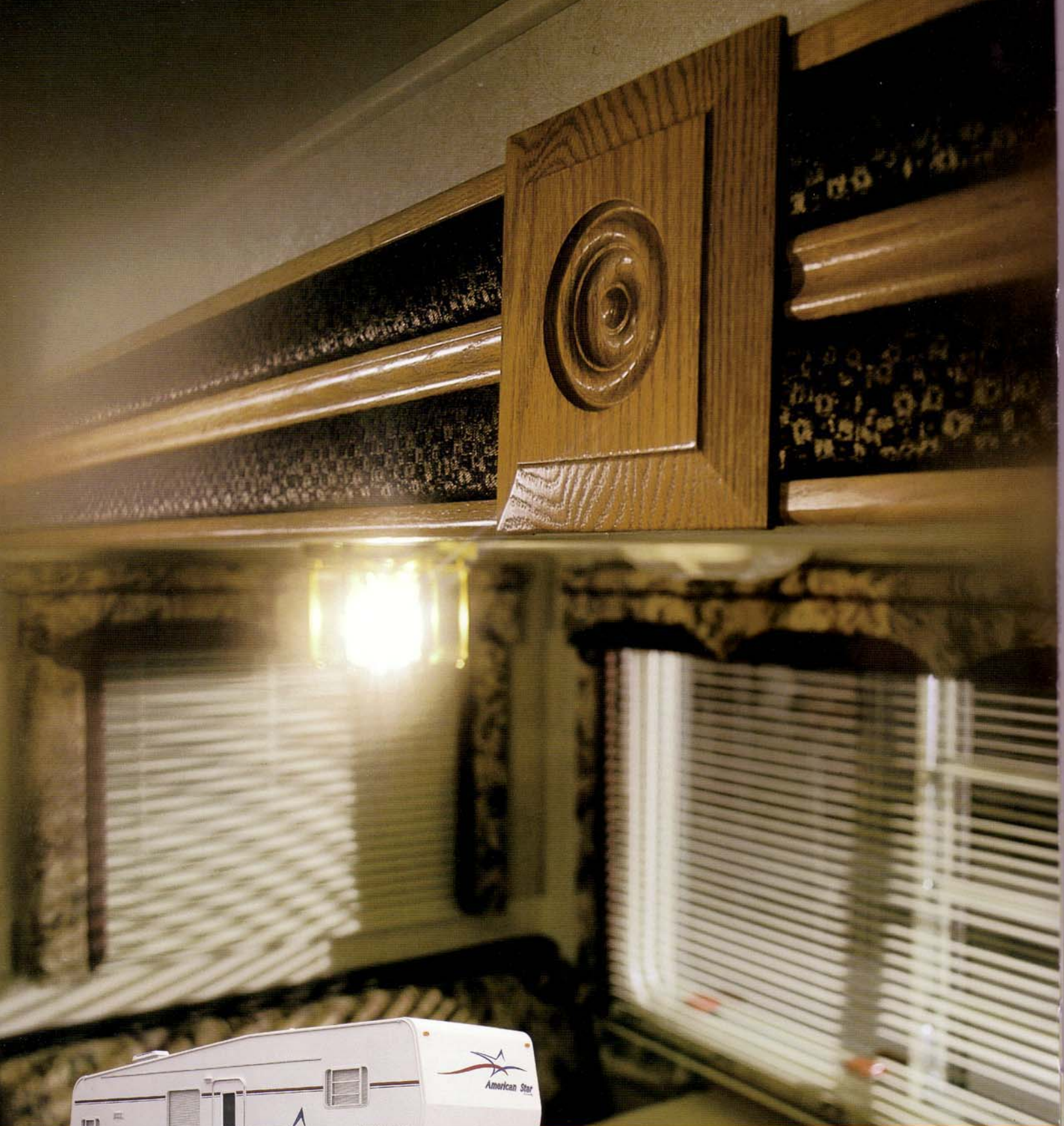
2 0 0 1   A M E R I C A N   S T A R   X L T



T R A V E L   T R A I L E R   •   F I F T H   W H E E L

N E W   M A R   C O R P O R A T I O N





"AS I WENT WALKING THAT RIBBON OF HIGHWAY  
I SAW ABOVE ME THAT ENDLESS SKYWAY."

WOODY GUTHRIE



## POSSIBILITIES.

The night sky doesn't get much clearer than on a cool autumn night in northern Indiana. The craftspeople who build your American Star XLT find inspiration in that sky. The stars perfectly set in the heavens are reminders of life's limitless possibilities. Each in its own place. Everything just right. Everything in tune with the universe. The American Star XLT Travel Trailer and Fifth Wheel are born under that sky and built with a deep dedication to doing things right.

American Star is built to open up new possibilities for you...new places, new people, new experiences. When you tow an American Star XLT, value and comfort are your constant companions. You can go places at your own pace. Take in the scenery or take to the highway. It's your choice. Either way, Newmar's devotion to quality and detail surrounds you.

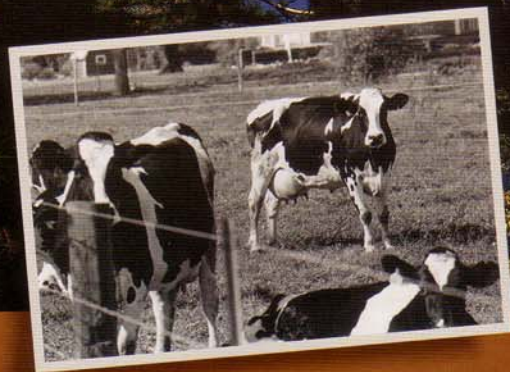
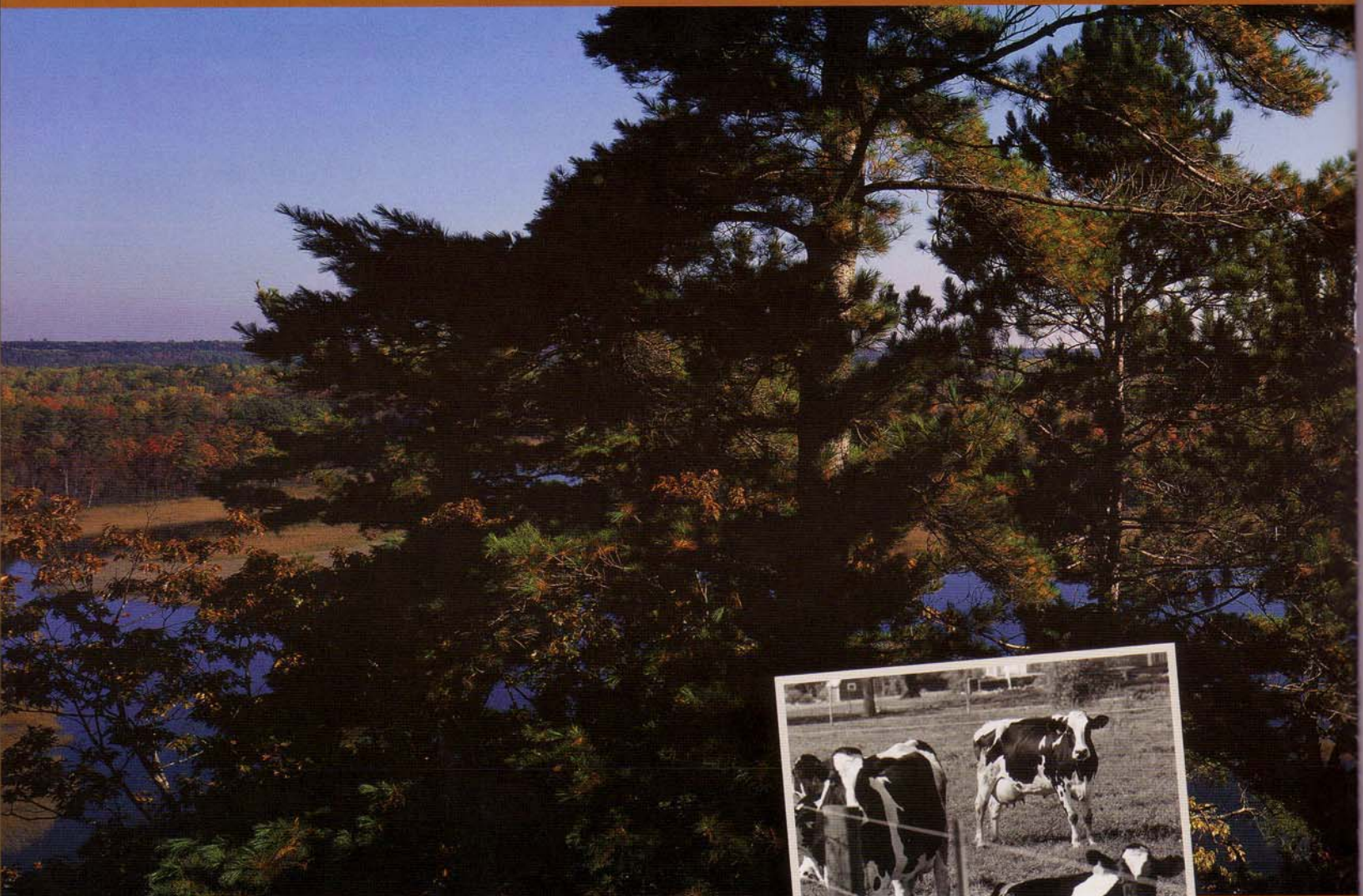
American Star offers many choices, many possibilities. Travel trailer or fifth wheel? Metal or BriteTek, a new roofing material that repels road grime and wipes off easily. 15-inch or 16-inch wheels? On the fifth wheel, you can choose lengths ranging from 29 to 34 feet. Whatever options you select, American Star XLT's power slideout is a true flat-floor design, just like more expensive models. You won't sacrifice a thing when you choose American Star, because we won't cut a corner when we build it.

**NEWMAR QUALITY: A WAY OF LIFE.**





# THE AMERICAN STAR XLT TRAVEL TRAILER



## INTRODUCING YOUR NEW OUTLOOK ON LIFE.



THE AMERICAN STAR XLT TRAVEL TRAILER  
HAS LOTS OF LOCKABLE STORAGE UNITS FOR  
SAFETY AND SECURITY.

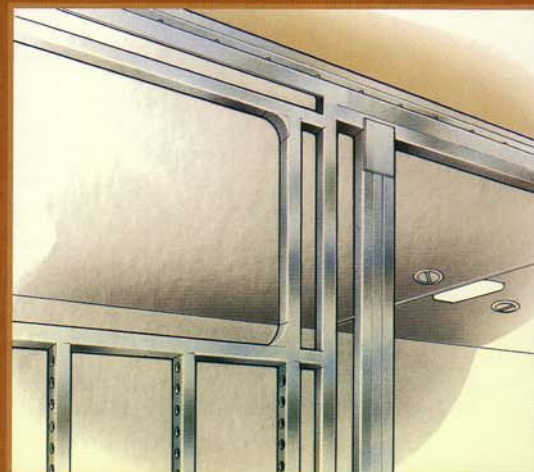
There's nothing like a change of scenery. We build the American Star XLT Travel Trailer for fresh experiences at every turn. Our craftspeople want you to appreciate your world in new and wonderful ways. The American Star is one of the most economical ways you can enter the RV lifestyle. You don't have to be rich to share in this country's riches. Revising your outlook on life is easy in an American Star. So throw another log on the fire, take in the majesty of nature, and dream about a place you've never been before. You will be there tomorrow.

MODEL SHOWN IS TT31FBRB.





AVAILABLE IN OAK OR OPTIONAL SNOW MAPLE, A HARDWOOD FRAME IS A STANDARD FEATURE ON OUR RAISED PANEL CABINET DOORS AND DRAWERS THROUGHOUT THE AMERICAN STAR XLT.



WE PREFER SIDEWALL FRAMING 16 INCHES ON-CENTER WITH ALUMINUM STUDS. WHY? BECAUSE THIS CONSTRUCTION PROVIDES ROOM FOR MORE INSULATION AND ALLOWS WALL OUTLETS TO BE POSITIONED LIKE THOSE IN YOUR HOME. IN ADDITION, THIS SIDEWALL DOESN'T DEPEND ON THE LAMINATION PROCESS FOR ITS STRENGTH.



## THE AMERICAN STAR XLT TRAVEL TRAILER



## COME IN FROM THE COLD.



THE KITCHEN FEATURES A 0.8 CUBIC FOOT MICROWAVE, A DOMETIC® REFRIGERATOR WITH MATCHING DOOR PANELS AND 6 CUBIC FEET OF STORAGE, AND A THREE-BURNER GAS STOVE WITH COVER.

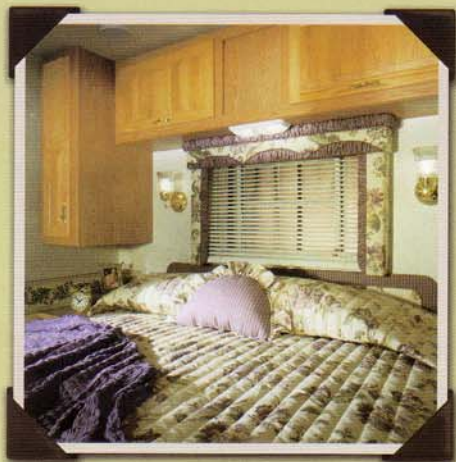
We want you to see all of life's rainbows. But you'll have to sit out a little rain in the process. Why not ride the storm out inside an American Star XLT Travel Trailer? It's built by skilled and sensitive hands to keep you in comfort when it's coming down in buckets outside. Let Cub Scouts take to their tents and scramble to stash their sleeping bags in plastic covers. American Star's designers suggest a more practical approach. The drops on the roof sound lovely, and your coffee tastes great. The level of amenities gives you pause to smile. When the storm clears, you and the Cub Scouts can enjoy the rainbow together. But you'll be nice and dry.

MODEL SHOWN IS TT31FBRB.



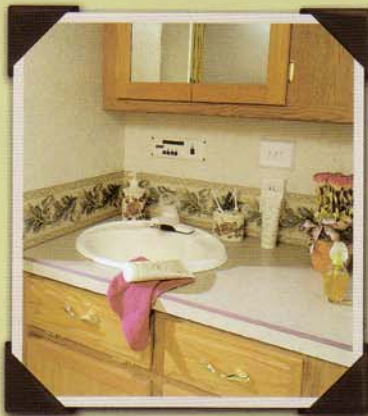


THE AMERICAN STAR XLT TRAVEL TRAILER FEATURES A LARGE KITCHEN, LIVING AND DINING AREA, SHOWN IN AMETHYST/OAK.



OAK CABINETRY AND BUILT-IN NIGHTSTANDS SURROUND THE COMFORTABLE BED.

THE SPACIOUS BATHROOM FEATURES MATCHING BORDER AROUND THE SINK AREA AND A TUB/SHOWER COMBINATION WITH SURROUND SHOWER DOOR.



THE POWER SLIDEOUT CONTAINS THE SOFA AND DINETTE.





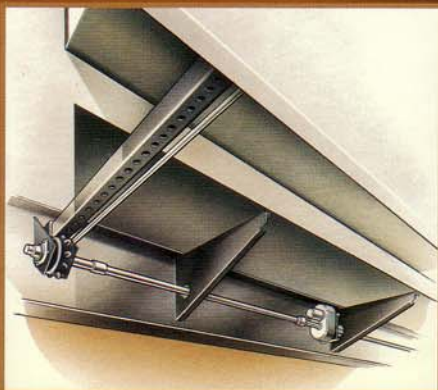
## A LESSON IN THE PHYSICS OF QUALITY.

At Newmar we may be down-home people, but we do know a thing or two about physics. Einstein would have liked American Star, because it proves that time and space are relative, and that the shortest distance between two points may not be a straight line after all. When you travel with an American Star, your time is your own, your space is boundless and the shortest distance between you and a great day may just be the longest way around. Newmar construction, value and absolute commitment to quality also mean that you'll be travelling in style for a long time without making a quantum dent in your budget.

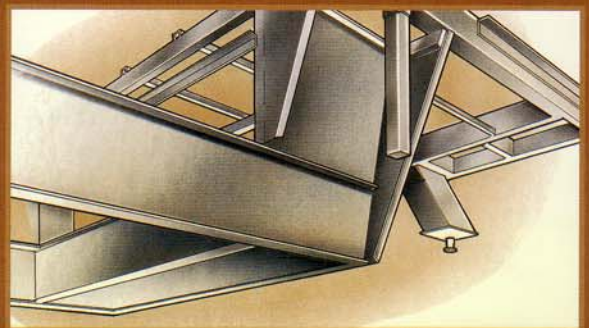


THE AMERICAN STAR FIFTH WHEEL HAS LOTS OF LOCKABLE STORAGE COMPARTMENTS FOR SAFETY AND SECURITY.





NEWMAR WAS THE PIONEER IN FLAT-FLOOR POWERED SLIDEOUTS. WE BUILD EVERY SLIDEOUT OURSELVES USING A RACK AND PINION SYSTEM AND A CENTRALLY LOCATED ELECTRIC MOTOR THAT APPLIES EVEN POWER TO BOTH RACKS.



EVER NOTICE THAT I-BEAMS ARE USED WHEN CONSTRUCTING SKYSCRAPERS? THE I-BEAM IS STRONGER THAN A BOX-CHANNEL BEAM. THAT'S WHY NEWMAR USES A 12-INCH I-BEAM WHEN CONSTRUCTING ITS FIFTH WHEEL FRAME.



## THE AMERICAN STAR XLT FIFTH WHEEL



## AMERICAN STAR XLT. THE PERFECT WAY TO



THE 19" TV IS CONVENIENTLY PLACED FOR EASY VIEWING FROM THE SOFA AND DINETTE AREA.

Your day's journey is at its end. With miles behind you, you're looking forward to a cold drink, a hot meal and a warm shower before turning in. It's nice to know that everything from here on is easy. Easy to operate and easy on the eyes. At Newmar, we don't just design the American Star, we humanize it with dedication, love and an absolute belief that only our best will do. In today's mass-produced world, we take the time to see to the details. The power slide-out slips easily into place. There's plenty of room to move around. The galley is efficient, the dining area is comfortable and the shower is roomy. Tomorrow you'll be refreshed and ready to roll again. For tonight, nothing stands between you and sweet dreams – except maybe a walk in the moonlight.



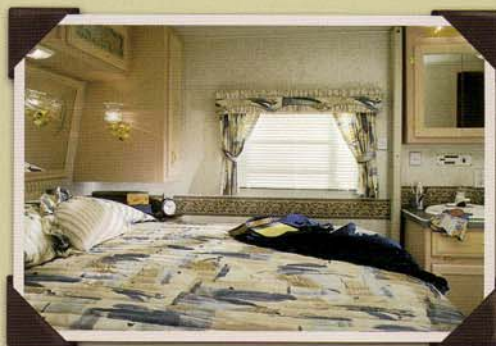


SOFA/DINETTE IN A NEWMAR-ASSEMBLED FLAT-FLOOR POWER SLIDEOUT, SHOWN IN SUMMER SKY AND OPTIONAL SNOW MAPLE.

END THE DAY.



THE KITCHEN FEATURES A 0.8 CUBIC FOOT MICROWAVE, A DOMETIC® REFRIGERATOR WITH MATCHING DOOR PANELS AND 6 CUBIC FEET OF STORAGE, AND A THREE-BURNER GAS STOVE WITH COVER.



BUILT-IN NIGHTSTANDS AND QUILTED BEDSPREAD WITH REVERSE SHAM AND ACCENT PILLOW ARE ALL STANDARD FEATURES IN THE AMERICAN STAR XLT FIFTH WHEEL, SHOWN WITH OPTIONAL SNOW MAPLE CABINETS.



# "WE MASS PRODUCE IN VOLUMES OF ONE."

"It is my deepest belief that we need to treat others as we treat ourselves, that I should treat our customers in the same manner as I would want to be treated. I believe these values helped make our company what it is today. They affect everything we do."



**QUALITY DESIGN** "We don't take short cuts, we construct. No matter what Newmar model our customers bought, they were assembled on the same production line, built with the same high standards and care."

**TESTING** "We test everything. All of our motorhomes, for instance, are tested for leaks, for alignment and for weight before they leave the assembly line. We want to be sure our products work the way our customers expect them to work."

**INNOVATIONS** "We innovate for the long-term quality of our customer's life. For example, there's our flat-floor power slide out, which gives our customers as much living space as possible. We offer practical features that will make your life in a Newmar RV easier."

**INDIVIDUAL RESPONSIBILITY** "If one of our quality-control inspectors finds a problem in the plumbing, they pull a worker from the plumbing team to fix it. We believe it's the team's responsibility, no one else's. Our workers feel a personal obligation to make a customer's RV the best possible."

**NEWMAR QUALITY** "When it's all said and done, this translates to Newmar Quality. Customers must be able to enjoy their Newmar RV for years to come. There is no other way for us."

When we say 'Newmar Quality: A Way of Life,' we truly live it."

Virgil Miller, President, Newmar Corp.



NEWMAR QUALITY: A WAY OF LIFE

355 N. DELAWARE STREET  
NAPPANEE, INDIANA 46550  
PH: 219.773.7791 • [WWW.NEWMARCORP.COM](http://WWW.NEWMARCORP.COM)

WE INVITE YOU TO VISIT OUR STATE-OF-THE-ART PRODUCTION FACILITY  
IN NAPPANEE, INDIANA. PLANT TOURS ARE OFFERED  
AT 10:00 A.M. AND 1:00 P.M., MONDAY THROUGH FRIDAY.

DON'T FORGET TO CHECK OUT THE NEWMAR KOUNTRY KLUB.  
ALL YOU NEED FOR ELIGIBILITY IS TO BE A PROUD OWNER OF ANY  
OF THE FINE NEWMAR RECREATIONAL VEHICLES.

FOR A COMPLETE PHOTO GALLERY OF ALL NEWMAR PRODUCTS, VISIT  
OUR WEBSITE: [WWW.NEWMARCORP.COM](http://WWW.NEWMARCORP.COM)

SOME FEATURES SHOWN IN OUR LITERATURE ARE OPTIONAL. COLORS AND FINISHES  
ARE PHOTOGRAPHIC REPRESENTATIONS AND MAY APPEAR DIFFERENTLY WHEN VIEWING  
ACTUAL MATERIALS. PRICES, SPECIFICATIONS AND FLOORPLANS ARE SUBJECT TO  
CHANGE AT NEWMAR'S DISCRETION WITHOUT PRIOR WRITTEN NOTICE OR OBLIGATION.  
PLEASE SEE YOUR DEALER FOR ACTUAL SAMPLES AND SPECIFICATIONS.



2 0 0 1   A M E R I C A N   S T A R   X L T



T R A V E L   T R A I L E R   •   F I F T H   W H E E L  
S P E C I F I C A T I O N S



N E W   M A R   C O R P O R A T I O N



## STANDARD FEATURES

### AIR CONDITIONING & HEATING

- 2 - 30# LP Gas Bottles with Automatic Regulator
- 13,500 BTU Brisk® Ducted Air Conditioner
- LP Leak Detector

### APPLIANCES & ACCESSORIES

- 6-Gallon Gas/Electric Water Heater - with Reigniter
- 22" Microwave
- 3-Burner Range with Oven (piezzo ignition)
- AM/FM Stereo with Cassette
- Bifold Range Cover
- Dometic® 2652 Refrigerator (6 cu. ft.)
- Range Hood with Light & Fan
- TV Antenna with Power Booster

### CABINETS & FURNITURE

- Oak Hardwood Frame Cabinet Doors

### ELECTRICAL FEATURES

- 55-Amp Converter with Charger
- 12-Volt Battery

### EXTERIOR FEATURES

- Rear Ladder

### INTERIOR FEATURES

- Carpeting - Nylon with Scotchguard® Stain Release
- Decorative Wall Clock
- Mini Blind Window Shades with Drapes and Valances
- Quilted Bedspread with Reverse Sham and Accent Pillow

### PLUMBING/BATH FEATURES

- Aqua Magic IV® Stool
- Monitor Panel
- Sewage Holding Tank Rinse
- Tub/Shower Surround with Shower Door
- Water Heater Bypass System

### CONSTRUCTION FEATURES

- Aluminum Frame Sidewalls & Roof Construction, 16" On Center

### WINDOWS, AWNINGS & VENTS

- Power Vent in Bath Area with Wall Switch
- Carefree Fiesta Side Awnings

## OPTIONAL FEATURES

### AIR CONDITIONING & HEATING

- 15,000 BTU Brisk® Air Conditioner in lieu of Standard [5 lbs.]

### APPLIANCES & ACCESSORIES

- Cable TV Connection with RG6 Coax [1 lb.]
- Telephone Connection with one Phone Jack [1 lb.]
- Dometic® 2852 Refrigerator (8 cu. ft.) [21 lbs.]
- Add-On CD Player [5 lbs.]
- 6-Gallon Gas/Electric Water Heater - Direct Spark Ignition [1 lb.]

### CABINETS & FURNITURE

- Snow Maple Cabinets [0 lbs.]
- Flexsteel® Petite Recliner [114 lbs.]

### EXTERIOR FEATURES

- Power Front Jacks [10 lbs.]
- Stabilizer Jacks (two pairs) [40 lbs.]
- Filon Exterior Sides with Gel-Coated Fiberglass End Caps [400 lbs.]
- BriteTek Roof with 7MM Decking [272 lbs.]

### INTERIOR FEATURES

- Lambrequin Window Treatment [20 lbs.]
- Simulated Plank Floor in Kitchen Area [37 lbs.]
- Day/Night Window Shades in Living and Bedroom Areas [5 lbs.]

### WINDOWS, AWNINGS & VENTS

- Skylight in Bathroom (located above tub/shower) [2 lbs.]
- Create a Breeze Vent in Kitchen with Wall Switch [5 lbs.]

### TOWABLE CHASSIS FEATURES

- Spare Tire with Carrier and Vinyl Cover [90 lbs.]

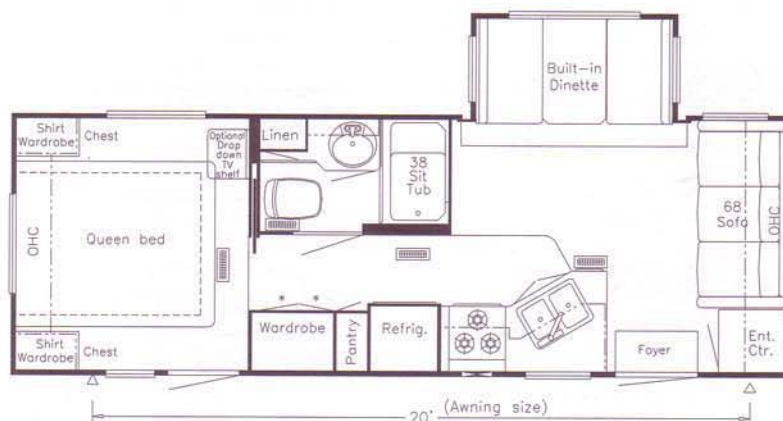
[ ] - INDICATES THE NET DIFFERENCE IN WEIGHT WITH THIS OPTION



## SPECIFICATIONS

### MODEL 2001 ASTT 26FL

Tire Size:	205-75 R15 C
GAWR:	3,500
GVWR:	7,900
Approx. Length:	27' 6"
Approx. Height:	10' 3"
Width:	96"
Approx Dry Weight:	5,391
Approx Hitch Weight:	840
Fresh Water:	42
Grey:	42
Sewage Cap:	42
Approx. Hitch Height:	21"
Heat Cap:	25,000



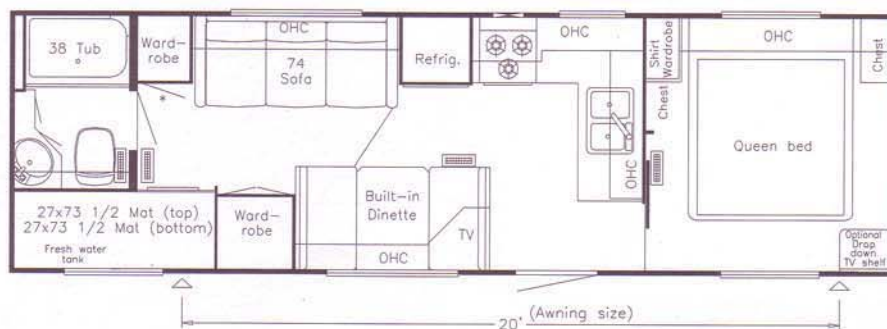
### MODEL 2001 ASTT 28FK

Tire Size:	205-75 R15 C
GAWR:	3,500
GVWR:	7,900
Approx. Length:	27' 9"
Approx. Height:	10' 3"
Width:	96"
Approx Dry Weight:	5,048
Approx Hitch Weight:	707
Fresh Water:	40
Grey:	42
Sewage Cap:	42
Approx. Hitch Height:	21"
Heat Cap:	25,000



### MODEL 2001 ASTT 30BB

Tire Size:	205-75 R15 C
GAWR:	3,500
GVWR:	7,900
Approx. Length:	30' 10"
Approx. Height:	10' 3"
Width:	96"
Approx Dry Weight:	5,411
Approx Hitch Weight:	541
Fresh Water:	40
Grey:	42
Sewage Cap:	42
Approx. Hitch Height:	21"
Heat Cap:	30,000

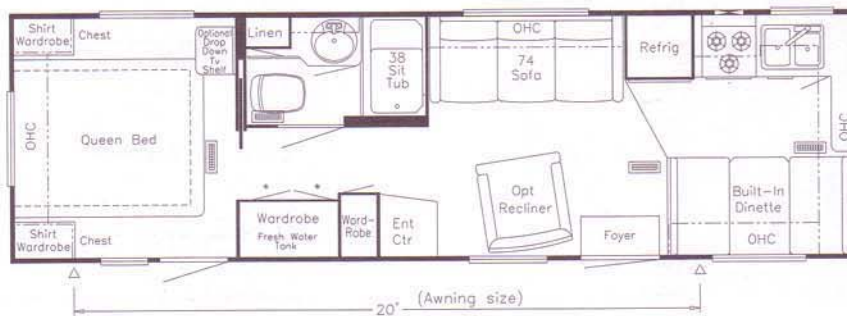




## SPECIFICATIONS

### MODEL 2001 ASTT 30FK

Tire Size:	205-75 R15 C
GAWR:	3,500
GVWR:	7,900
Approx. Length:	30' 10"
Approx. Height:	10' 3"
Width:	96"
Approx Dry Weight:	5,319
Approx Hitch Weight:	798
Fresh Water:	40
Grey:	42
Sewage Cap:	42
Approx. Hitch Height:	21"
Heat Cap:	30,000



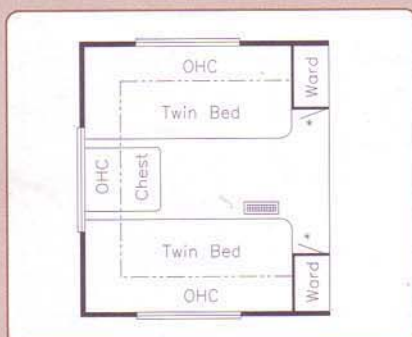
### MODEL 2001 ASTT 31FBRB

Tire Size:	225-75 R15 D
GAWR:	5,080
GVWR:	9,800
Approx. Length:	31' 11"
Approx. Height:	10' 11"
Width:	96"
Approx Dry Weight:	7,263
Approx Hitch Weight:	728
Fresh Water:	40
Grey:	42
Sewage Cap:	42
Approx. Hitch Height:	23"
Heat Cap:	30,000



\*LENGTHS, HEIGHTS, WIDTHS AND DRY WEIGHTS ARE APPROXIMATE. WEIGHT WILL VARY BASED ON OPTIONAL EQUIPMENT ADDED TO THE ABOVE BASE WEIGHT.

## FLOORPLAN OPTION



KOB3  
75' TWIN BEDS  
ASTT: 26FL, 28FK, 30FK



## STANDARD FEATURES

### AIR CONDITIONING & HEATING

- 2 - 30# LP Gas Bottles with Automatic Regulator
- 13,500 BTU Brisk® Ducted Air Conditioner
- LP Leak Detector

### APPLIANCES & ACCESSORIES

- 6-Gallon Gas/Electric Water Heater - with Reigniter
- 22" Microwave
- 3-Burner Range with Oven (piezzo ignition)
- AM/FM Stereo with Cassette
- Bifold Range Cover
- Dometic® 2652 Refrigerator (6 cu. ft.)
- Range Hood with Light & Fan
- TV Antenna with Power Booster

### CABINETS & FURNITURE

- Oak Hardwood Frame Cabinet Doors

### ELECTRICAL FEATURES

- 55-Amp Converter with Charger
- 12-Volt Battery

### EXTERIOR FEATURES

- Rear Ladder

### INTERIOR FEATURES

- Carpeting - Nylon with Scotchguard® Stain Release
- Decorative Wall Clock
- Mini Blind Window Shades with Drapes and Valances
- Quilted Bedspread with Reverse Sham and Accent Pillow

### PLUMBING/BATH FEATURES

- Aqua Magic IV® Stool
- Monitor Panel
- Sewage Holding Tank Rinse
- Tub/Shower Surround with Shower Door
- Water Heater Bypass System

### CONSTRUCTION FEATURES

- Aluminum Frame Sidewalls & Roof Construction, 16" On Center

### WINDOWS, AWNINGS & VENTS

- Power Vent in Bath Area with Wall Switch
- Carefree Fiesta® Side Awning

## OPTIONAL FEATURES

### AIR CONDITIONING & HEATING

- 15,000 BTU Brisk® Air Conditioner in lieu of Standard [5 lbs.]

### APPLIANCES & ACCESSORIES

- Cable TV Connection with RG6 Coax [1 lb.]
- Telephone Connection with one Phone Jack [1 lb.]
- Dometic® 2852 Refrigerator (8 cu. ft.) [21 lbs.]
- Add-On CD Player [5 lbs.]
- 6-Gallon Gas/Electric Water Heater - Direct Spark Ignition [1 lb.]

### CABINETS & FURNITURE

- Snow Maple Cabinets [0 lbs.]
- Flexsteel® Petite Recliner [114 lbs.]

### EXTERIOR FEATURES

- Power Front Jacks [10 lbs.]
- Stabilizer Jacks (one pair) [40 lbs.]
- Filon Exterior Sides with Gel-Coated Fiberglass End Caps [400 lbs.]
- BriteTek Roof with 7MM Decking [272 lbs.]

### INTERIOR FEATURES

- Lambrequin Window Treatment [20 lbs.]
- Simulated Plank Floor in Kitchen Area [37 lbs.]
- Day/Night Window Shades in Living and Bedroom Areas [5 lbs.]

### WINDOWS, AWNINGS & VENTS

- Skylight in Bathroom (located above tub/shower) [2 lbs.]
- Create a Breeze Vent in Kitchen with Wall Switch [5 lbs.]

### TOWABLE CHASSIS FEATURES

- Spare Tire with Carrier and Vinyl Cover [90 lbs.]

[ ] - INDICATES THE NET DIFFERENCE IN WEIGHT WITH THIS OPTION



## SPECIFICATIONS

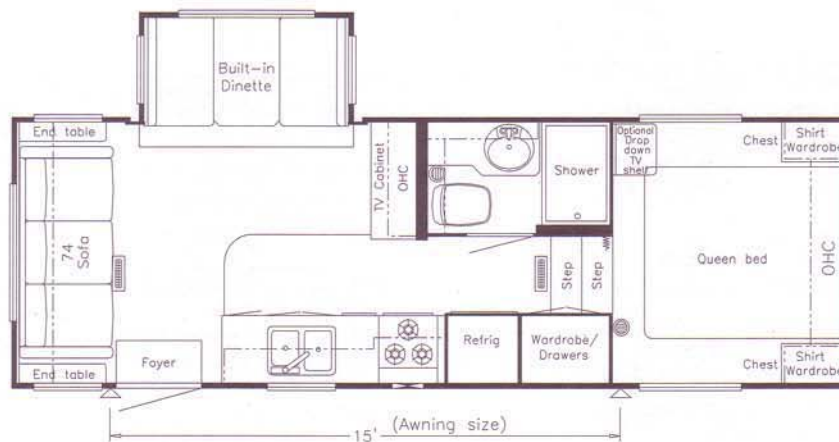
### MODEL 2001 ASFW 24KSR8

Tire Size:	225-75 R15 D
GAWR:	5,080
GVWR:	11,900
Approx. Length:	25' 6"
Approx. Height:	12' 0"
Width:	96"
Approx Dry Weight:	7,250
Approx Hitch Weight:	1,275
Fresh Water:	42
Grey:	42
Sewage Cap:	42
Approx. Hitch Height:	46"
Heat Cap:	30,000



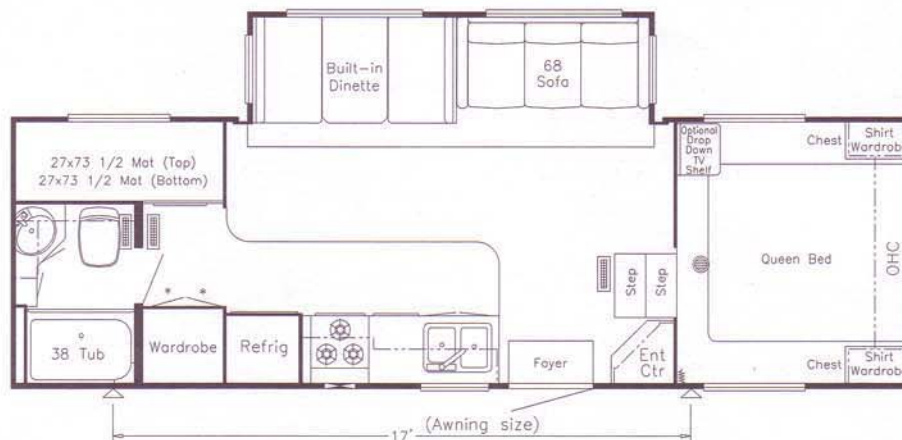
### MODEL 2001 ASFW 26RL

Tire Size:	225-75 R15 D
GAWR:	5,080
GVWR:	11,900
Approx. Length:	26' 1"
Approx. Height:	12' 0"
Width:	96"
Approx Dry Weight:	6,977
Approx Hitch Weight:	1,047
Fresh Water:	42
Grey:	42
Sewage Cap:	42
Approx. Hitch Height:	46"
Heat Cap:	30,000



### MODEL 2001 ASFW 2788

Tire Size:	225-75 R15 D
GAWR:	5,080
GVWR:	11,900
Approx. Length:	27' 11"
Approx. Height:	12' 0"
Width:	96"
Approx Dry Weight:	7,500
Approx Hitch Weight:	1,500
Fresh Water:	42
Grey:	42
Sewage Cap:	42
Approx. Hitch Height:	46"
Heat Cap:	30,000

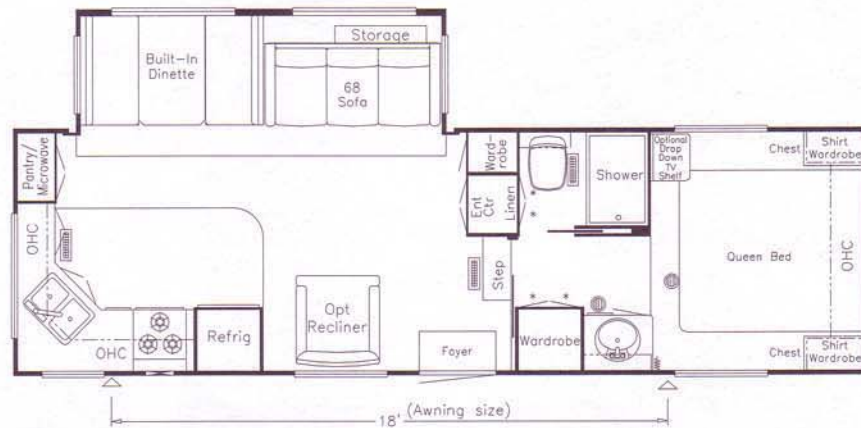




## SPECIFICATIONS

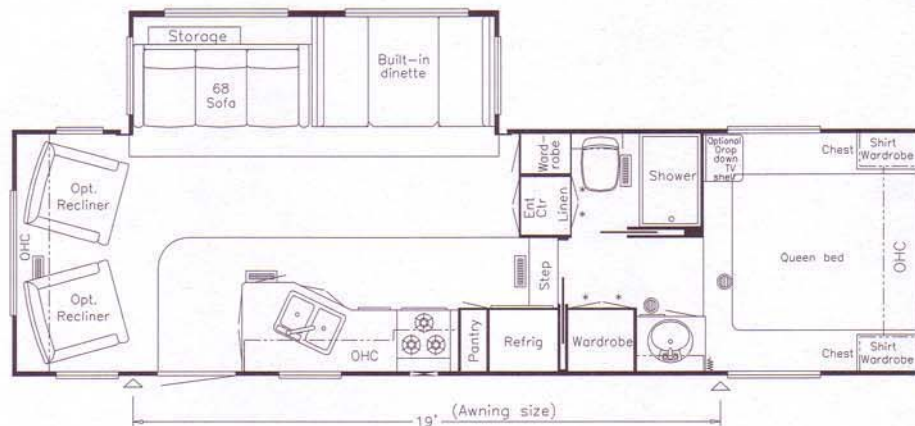
### MODEL 2001 ASFW 29RK

Tire Size:	225-75 R15 D
GAWR:	5,080
GVWR:	11,900
Approx. Length:	29' 0"
Approx. Height:	12' 0"
Width:	96"
Approx Dry Weight:	7,819
Approx Hitch Weight:	1,251
Fresh Water:	42
Grey:	42
Sewage Cap:	42
Approx. Hitch Height:	46"
Heat Cap:	30,000



### MODEL 2001 ASFW 30RL

Tire Size:	225-75 R15 D
GAWR:	5,080
GVWR:	11,900
Approx. Length:	30' 9"
Approx. Height:	12' 0"
Width:	96"
Approx Dry Weight:	8,067
Approx Hitch Weight:	1,452
Fresh Water:	42
Grey:	42
Sewage Cap:	42
Approx. Hitch Height:	46"
Heat Cap:	30,000



\*LENGTHS, HEIGHTS, WIDTHS AND DRY WEIGHTS ARE APPROXIMATE. WEIGHT WILL VARY BASED ON OPTIONAL EQUIPMENT ADDED TO THE ABOVE BASE WEIGHT.



# THE AMERICAN STAR XLT

DON'T FORGET TO CHECK OUT THE NEWMAR KOUNTRY KLUB. ALL YOU NEED FOR ELIGIBILITY IS TO BE A PROUD OWNER OF ANY OF THE FINE NEWMAR RECREATIONAL VEHICLES.

WE INVITE YOU TO VISIT OUR STATE-OF-THE-ART PRODUCTION FACILITY IN NAPPANEE, INDIANA. PLANT TOURS ARE OFFERED AT 10:00 A.M. AND 1:00 P.M., MONDAY THROUGH FRIDAY.



NEWMAR QUALITY: A WAY OF LIFE

355 N. DELAWARE STREET  
NAPPANEE, INDIANA 46550

PH: 219.773.7791 • [WWW.NEWMARCORP.COM](http://WWW.NEWMARCORP.COM)

PRICES, SPECIFICATIONS AND FLOORPLANS ARE SUBJECT TO CHANGE AT NEWMAR'S DISCRETION WITHOUT PRIOR WRITTEN NOTICE OR OBLIGATION. PLEASE SEE YOUR DEALER FOR ACTUAL SAMPLES AND SPECIFICATIONS. ©2000 NEWMAR CORPORATION. PRINTED IN THE U.S.A. (6/00)