

2 0 0 1 K O U N T R Y S T A R



D I E S E L P U S H E R • C L A S S A

N E W M A R C O R P O R A T I O N



"THE REWARD OF A THING WELL DONE
IS HAVING DONE IT."

RALPH WALDO EMERSON

CARING.

Believe it or not, there are people who still care: The good folks behind the counter at the mom-n-pop grocery store in Alabama. The rangers at the White River National Forest in Colorado. The keepers of the lighthouses that dot Maine's coastline. The proprietor at the feed mill here in Nappanee, Indiana. Look past the shopping malls and fast-food chains, and you'll find that there are people who still care.

At Newmar, we understand your need to trust the people who build your next motorhome, people who care. We understand because you have told us. We are constantly talking to Newmar owners to hear their opinions on what's right and what's needed on our motorhomes. In short, we listen.

Our managers and engineers travel this land...in Newmar motorhomes. We live the life, touring in our RVs, learning first hand what works and, on rare occasion, what doesn't work. Then we return to Nappanee and make it work.

When you buy a Kountry Star motorhome from Newmar, you're buying our 33 years of experience in the RV business. And the years of experience from listening to our owners (the kind that really counts).

The Kountry Star has the quality, features, specifications...whatever it takes to move you trouble-free across this country in comfort. Maybe it sounds old fashioned, but that's what we believe our customers want. Because we still care.

NEWMAR QUALITY: A WAY OF LIFE.



THE KOUNTRY STAR DIESEL PUSHER

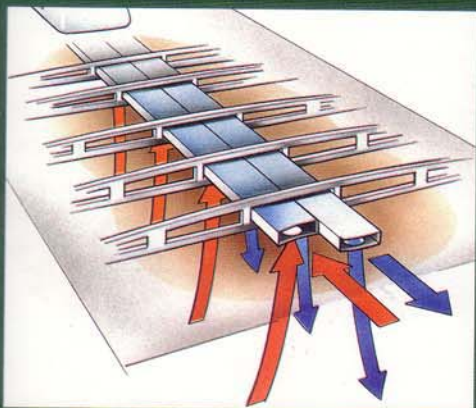


THE CARING TOUCH SHOWS.



AMPLE BASEMENT STORAGE—INCLUDING PASS THROUGH STORAGE—PROVIDES PLENTY OF CARGO CAPACITY.

The Kountry Star Diesel Pusher provides exceptional value in a sturdy, powerful package. The powerful diesel engine is up to the task of conquering just about any grade you might encounter on your travels across this great land. With all that power at your command, don't forget to slow down and smell the flowers on your way.



BECAUSE NEWMAR FRAMES ITS UNITS LIKE THE FRAMING IN YOUR HOME, WE CAN PROVIDE TRUE CENTRAL AIR CONDITIONING. VENTS THROUGHOUT DELIVER COOL AIR AND RETURN WARM AIR, ALLOWING YOU TO CLOSE THE DOOR TO A ROOM AND STILL ENJOY TOTAL COMFORT.



ALL DIESEL PUSHER CHASSIS ARCH UPWARDS DUE TO THE WEIGHT OF THE ENGINE AT THE REAR. NEWMAR ADDS A BRIDGE-LIKE TRUSS STRUCTURE THAT CORRECTS THIS ARCH, THUS ELIMINATING UNDUE STRESS ON THE SIDEWALLS.

THE KOUNTRY STAR DIESEL PUSHER



WHAT, EXACTLY, DOES "ROUGHING IT" MEAN?

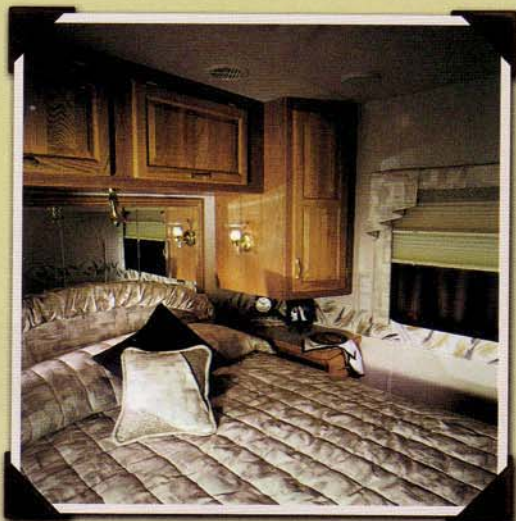


THE KOUNTRY STAR DIESEL PUSHER'S KITCHEN FEATURES A REFRIGERATOR WITH MATCHING DOOR PANELS AND 8 CUBIC FEET OF STORAGE, PORCELAIN SINK, OPTIONAL CONVECTION MICROWAVE AND THREE-BURNER GAS STOVE WITH COVER.

"Roughing it" left town with pup tents and the box of Ohio Blue Tip matches for the campfire. With the care Newmar installs in every Kountry Star Diesel Pusher, you're assured a comfortable and commanding view of the road while traveling to your next destination. Once there, all the necessary amenities are in place to enjoy the summer breeze moving through the windows while you kick back in your recliner.



A SOFA/DINETTE IN A NEWMAR-ASSEMBLED
FLAT-FLOOR POWER SLIDEOUT, SHOWN IN
SANDSTONE/OAK.

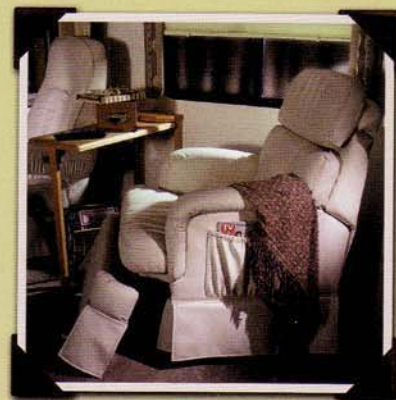


OAK CABINETRY AND BUILT-IN
NIGHTSTANDS SURROUND THE
COMFORTABLE QUEEN-SIZE BED.

A FLEXSTEEL® RECLINER,
CONVENIENTLY POSITIONED
BETWEEN THE FRONT PASSENGER
SEAT AND KITCHEN, SHOWN
IN OPTIONAL LEATHERMATE
UPHOLSTERY.



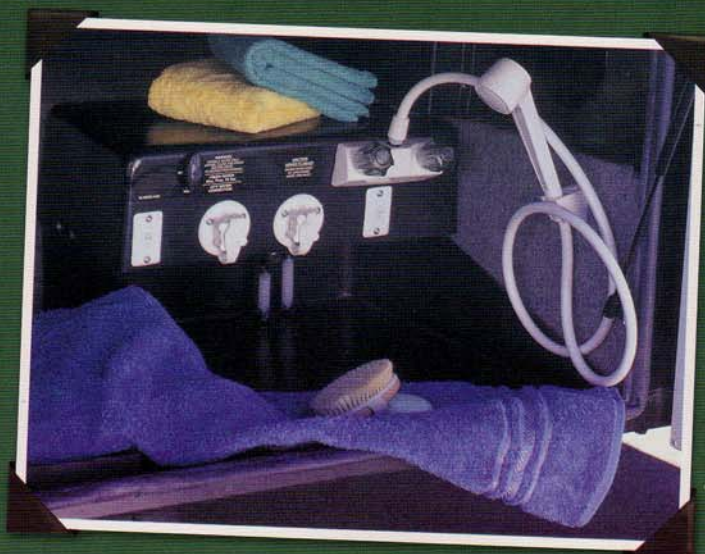
COCKPIT AREA FEATURES SWIVELING
DRIVER AND PASSENGER SEATS,
USEFUL BOTH ON THE ROAD AND AT
YOUR STOP, SHOWN IN OPTIONAL
LEATHERMATE UPHOLSTERY.





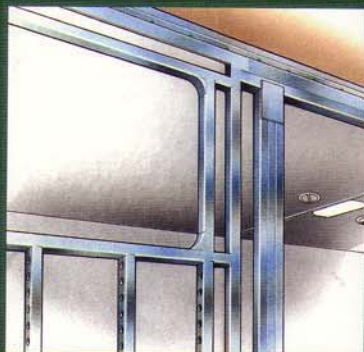
SOME OF OUR BEST FEATURES ARE HIDDEN. IT'S THE CARE

The Kountry Star offers a combination of value and amenities in the mid model range of Newmar's Class A gas motorhomes. Chassis and engine packages are designed to provide impressive power and performance. A front-mounted diesel option is also available. In either case, you'll be ready for the next bend in the road, and the next uphill climb, every time you slip behind the wheel.



EXTERIOR WASH STATION MAKES CLEAN UP EASY.

THAT SHOWS.



WE PREFER SIDEWALL FRAMING 16 INCHES ON-CENTER WITH ALUMINUM STUDS. WHY? BECAUSE THIS CONSTRUCTION PROVIDES ROOM FOR MORE INSULATION AND ALLOWS WALL OUTLETS TO BE POSITIONED LIKE THOSE IN YOUR HOME. IN ADDITION, THIS SIDEWALL DOESN'T DEPEND ON THE LAMINATION PROCESS FOR ITS STRENGTH.

NEWMAR IS THE PIONEER IN FLAT-FLOOR POWERED SLIDEOUTS. WE BUILD EVERY SLIDEOUT OURSELVES, USING A RACK AND PINION SYSTEM AND A CENTRALLY LOCATED ELECTRIC MOTOR THAT APPLIES POWER EVENLY TO BOTH RACKS.



THE KOUNTRY STAR CLASS A



NEWMAR TAKES CARE TO BUILD IT. YOU CAN ENJOY



We care about the Kountry Star motorhome we build for you. That makes your life easier because we take the time to do things right. Your immediate concern is a light snack of fresh fruit and what book to read while you stretch out on the sofa. Enjoy the afternoon because we've got the details covered.

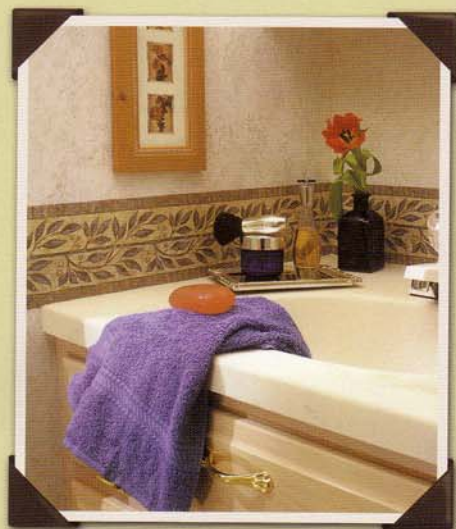
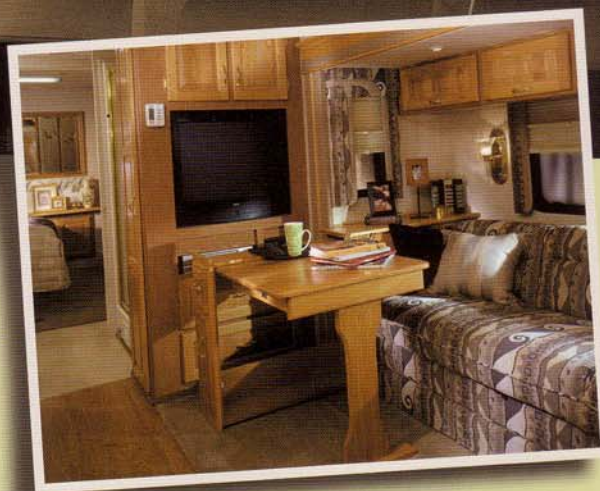
MAPLE CABINETS AND BUILT-IN NIGHTSTANDS GRACE A QUEEN-SIZE BED IN THE BEDROOM.

SUMMER SKY/MAPLE ADORNS
THIS KITCHEN/DINETTE AREA.

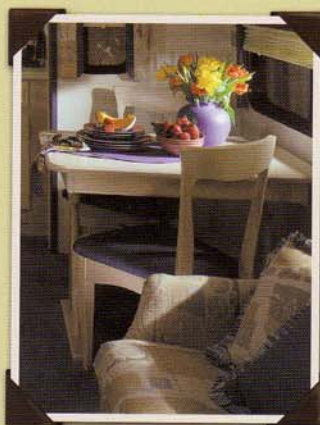


IT... CAREFREE.

NEWMAR'S FLAT-FLOOR POWER
SLIDEOUT FEATURES A SOFA
AND AN OPTIONAL HIDE-
AWAY TABLE, SURROUNDED IN
SANDSTONE/OAK DECOR.



A SEPARATE VANITY AWAITS YOU
IN THE MORNING, SHOWN IN
SUMMER SKY/MAPLE.



SOFA/DINETTE SHOWN IN SUMMER
SKY WITH OPTIONAL MAPLE
HARDWOOD.

"WE MASS PRODUCE IN VOLUMES OF ONE."

"It is my deepest belief that we need to treat others as we treat ourselves, that I should treat our customers in the same manner as I would want to be treated. I believe these values helped make our company what it is today. They affect everything we do."



QUALITY DESIGN "We don't take short cuts, we construct. No matter what Newmar model our customers bought, they were assembled on the same production line, built with the same high standards and care."

TESTING "We test everything. All of our motorhomes, for instance, are tested for leaks, for alignment and for weight before they leave the assembly line. We want to be sure our products work the way our customers expect them to work."

INNOVATIONS "We innovate for the long-term quality of our customer's life. For example, there's our flat-floor power slide out, which gives our customers as much living space as possible. We offer practical features that will make your life in a Newmar RV easier."

INDIVIDUAL RESPONSIBILITY "If one of our quality-control inspectors finds a problem in the plumbing, they pull a worker from the plumbing team to fix it. We believe it's the team's responsibility, no one else's. Our workers feel a personal obligation to make a customer's RV the best possible."

NEWMAR QUALITY "When it's all said and done, this translates to Newmar Quality. Customers must be able to enjoy their Newmar RV for years to come. There is no other way for us."

When we say 'Newmar Quality: A Way of Life,' we truly live it."

Virgil Miller, President, Newmar Corp.



NEWMAR QUALITY: A WAY OF LIFE

355 N. DELAWARE STREET
NAPPANEE, INDIANA 46550
PH: 219.773.7791 • WWW.NEWMARCORP.COM

WE INVITE YOU TO VISIT OUR STATE-OF-THE-ART PRODUCTION FACILITY
IN NAPPANEE, INDIANA. PLANT TOURS ARE OFFERED
AT 10:00 A.M. AND 1:00 P.M., MONDAY THROUGH FRIDAY.

DON'T FORGET TO CHECK OUT THE NEWMAR KOUNTRY KLUB. ALL YOU NEED FOR ELIGIBILITY IS TO BE A PROUD OWNER OF ANY OF THE FINE NEWMAR RECREATIONAL VEHICLES.

FOR A COMPLETE PHOTO GALLERY OF ALL NEWMAR PRODUCTS, VISIT OUR WEBSITE: WWW.NEWMARCORP.COM

SOME FEATURES SHOWN IN OUR LITERATURE ARE OPTIONAL. COLORS AND FINISHES ARE PHOTOGRAPHIC REPRESENTATIONS AND MAY APPEAR DIFFERENTLY WHEN VIEWING ACTUAL MATERIALS. PRICES, SPECIFICATIONS AND FLOORPLANS ARE SUBJECT TO CHANGE AT NEWMAR'S DISCRETION WITHOUT PRIOR WRITTEN NOTICE OR OBLIGATION. PLEASE SEE YOUR DEALER FOR ACTUAL SAMPLES AND SPECIFICATIONS.

©2000 NEWMAR CORPORATION. PRINTED IN THE U.S.A. (6/00)

2001 KOUNTRY STAR



CLASS A • DIESEL PUSHER
SPECIFICATIONS



NEWMAR CORPORATION

STANDARD FEATURES

MOTORIZED CHASSIS FEATURES

- Standard Chassis – Ford F-53 Chassis with V-10 Engine
- Cruise Control
- Tilt Steering Wheel

AIR CONDITIONING & HEATING

- 15,000 BTU Brisk® Central Air Conditioner
- Dash Heater/Air Conditioner High Output
- LP Leak Detector

APPLIANCES & ACCESSORIES

- 6-Gallon Gas/Electric Water Heater – Direct Spark Ignition
- Spacesaver Microwave
- 27" Color TV In Dash Overhead (27" TV in Entertainment Center—3058)
- 3-Burner Recessed Range with Glass Oven Door (piezzo ignition)
- AM/FM Stereo with CD Player (in dash)
- Cable TV Connection with RG6 Coax
- Dometic® 3862 Refrigerator (8 cu. ft.)
- Satellite Prep – Phone/TV Jack and Recept
- Telephone Connection with one Phone Jack
- TV Antenna with Power Booster & two Jacks

CABINETS & FURNITURE

- Flexsteel, Swivel/Recline Front Seats with 3-Point Seat Belt
- Flexsteel, Swivel Barrel Chair (where shown on floor plan drawing)

- Drawers with Metal Guides
- Corian® Countertop in Kitchen with Color Coordinated Edge and Acrylic Sink
- Oak Hardwood Raised Panel Cabinet Doors
- One-Piece Cultured Marble Countertop and Lavatory in Bath

ELECTRICAL FEATURES

- 55-Amp Converter with Charger
- Battery Disconnect (for house battery)
- Generac® Generator with One Remote Switch and Automatic Changeover (5.5 on Ford; 6.6 on Freightliner)
- 5-Watt Solar Panel to Charge Chassis Battery
- 50-Amp Electrical Service with Flexible Cord
- Driving Lights
- Emergency Engine Start Switch
- Exterior Security Lights (one installed on each side)
- Interior Courtesy Lights
- Lights in Exterior Storage Compartments
- Lights in Wardrobes

EXTERIOR FEATURES

- BriteTek Roof with 7MM Decking
- Convex Exterior Mirrors with Remote Control and Defrost
- Gel-Coated Fiberglass Exterior Sides
- Hitch for Towing Car (with two extra 14-gauge wires for customer use) (class-3, 5000# rating)
- Roof Rack & Ladder

INTERIOR FEATURES

- Carpeting – Nylon with Scotchguard® Stain Release
- Vinyl Floor in Kitchen and Bath Area
- Day/Night Pleated Window Shades & Lambrequins
- Quilted Bedspread with Reverse Sham & Accent Pillow
- Woven Soft Touch Ceiling

PLUMBING/BATH FEATURES

- China Stool with Spray Attachment
- Exterior Shower (located on off door side)
- Fiberglass Tub/Shower with Glass Shower Door
- Monitor Panel
- Sewage Holding Tank Rinse
- Water Heater Bypass System

CONSTRUCTION FEATURES

- Aluminum Frame Sidewalls & Roof Construction, 16" On Center

WINDOWS, AWNINGS & VENTS

- Automatic Double Entrance Door Step
- Fan-tastic Vent with Rain Sensor in Kitchen
- Power Vent in Bath Area with Wall Switch
- Lighted Acrylic Assist Handle at Entrance Door
- Skylight in Bathroom (located above tub/shower)
- Stainless Steel Wheel Simulators
- Tinted Safety Glass Windows

OPTIONAL FEATURES

OPTION PACKAGES

- 2 – 13,500 BTU Penguin® Air Conditioners, Touch Control Jacks, Rear View Monitor, A&E Mains Slideout Cover & 9000 Side Awning [548 lbs.]
- Touch Control Jacks, Rear View Monitor, A&E Main Slideout Cover & 9000 Side Awning [448 lbs.]

APPLIANCES & ACCESSORIES

- 30" Convection Microwave with 3-Burner Cooktop [13 lbs.]
- Ceiling Fan in Bedroom (available on 3758, 3762, 3766) [10 lbs.]

- Compact Washer/Dryer (available on 3566, 3758, 3762, 3766) [185 lbs.]
- Dometic® 1062 Refrigerator (10 cu. ft.) [91 lbs.]
- Rear View Monitor System [5 lbs.]
- Washer/Dryer Prep (for compact washer/dryer – available on 3566, 3758, 3762, 3766) [22 lbs.]

CABINETS & FURNITURE

- Leathermate Front Seats with 6-Way Power, Power Lumbar & Ergo-Flex Arms [50 lbs.]

- Leathermate Swivel/Rocker Recliner in lieu of Standard (not available on 2957, 3058) [5 lbs.]
- Built-in Booth Dinette in lieu of Standard (available on 3357, 3758, 3762, 3766) [23 lbs.]
- Snow Maple Cabinets [0 lbs.]

ELECTRICAL FEATURES

- 400-Watt Inverter (for dash TV) [10 lbs.]

INTERIOR FEATURES

- Simulated Plank Floor in Bath [34 lbs.]
- Simulated Plank Floor in Kitchen Area [37 lbs.]

SPECIFICATIONS

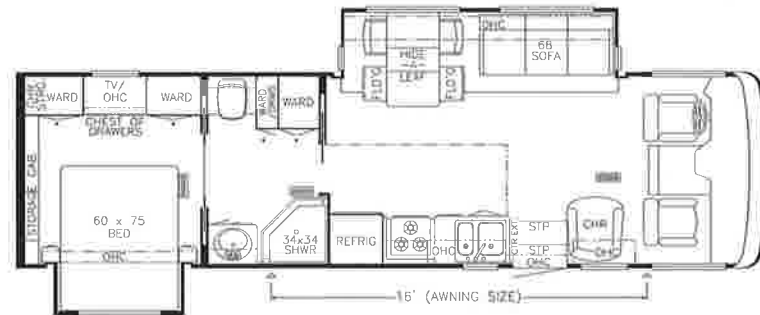
MODEL 2001 KSCA 305B

Length (overall):	31' 2"
Width (overall):	101'
Height (overall):	11' 8"
Width (interior):	95.5'
Height (interior):	78"
Grey:	50
Sewage:	50
Water:	56
LP:	32
Furnace:	30,000
Water Heater:	6



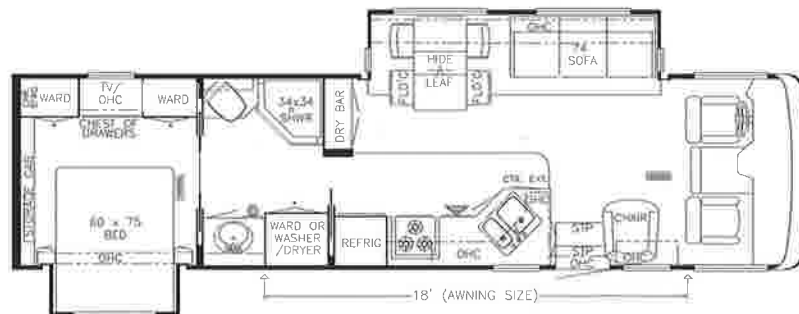
MODEL 2001 KSCA 3357

Length (overall):	33' 9"
Width (overall):	101'
Height (overall):	11' 8"
Width (interior):	95.5'
Height (interior):	78"
Grey:	50
Sewage:	50
Water:	56
LP:	32
Furnace:	35,000
Water Heater:	6



MODEL 2001 KSCA 3560

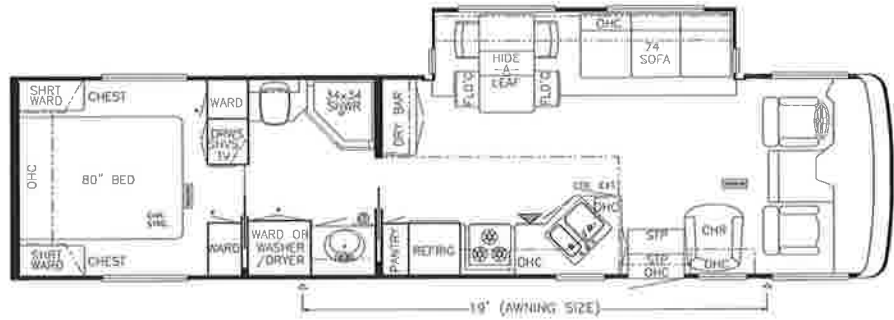
Length (overall):	35' 9"
Width (overall):	101'
Height (overall):	11' 8"
Width (interior):	95.5'
Height (interior):	78"
Grey:	50
Sewage:	50
Water:	56
LP:	32
Furnace:	35,000
Water Heater:	6



SPECIFICATIONS

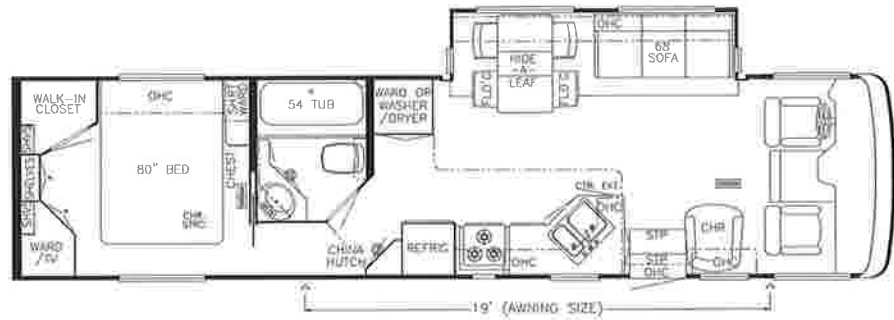
MODEL 2001 KSCA 3758

Length (overall):	37' 10"
Width (overall):	101'
Height (overall):	11' 8"
Width (interior):	95.5'
Height (interior):	78"
Grey:	50
Sewage:	50
Water:	56
LP:	32
Furnace:	42,000
Water Heater:	6



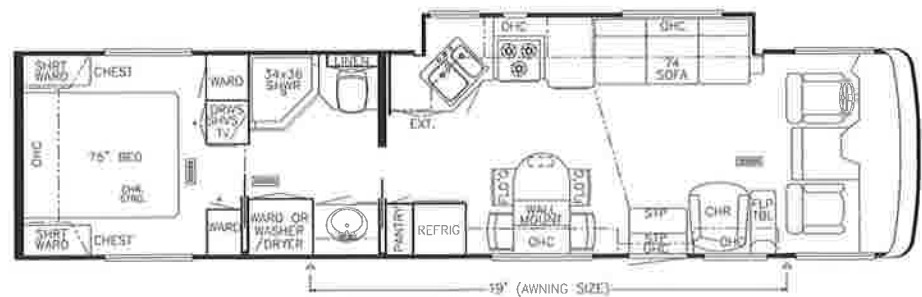
MODEL 2001 KSCA 3762

Length (overall):	37' 10"
Width (overall):	101'
Height (overall):	11' 8"
Width (interior):	95.5'
Height (interior):	78"
Grey:	50
Sewage:	50
Water:	56
LP:	32
Furnace:	42,000
Water Heater:	6

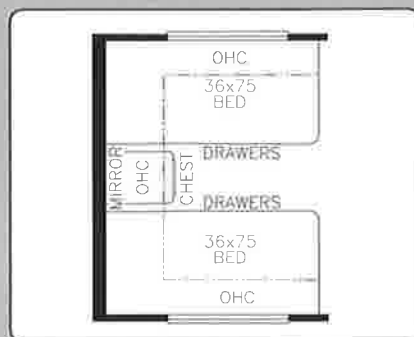


MODEL 2001 KSCA 3766

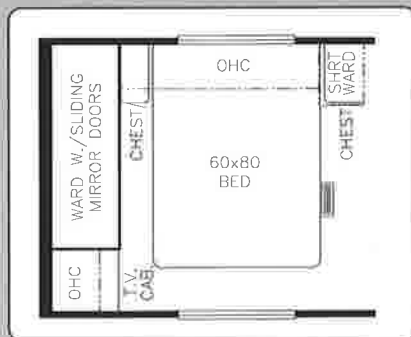
Length (overall):	37' 10"
Width (overall):	101'
Height (overall):	11' 8"
Width (interior):	95.5'
Height (interior):	78"
Grey:	50
Sewage:	50
Water:	56
LP:	32
Furnace:	42,000
Water Heater:	6



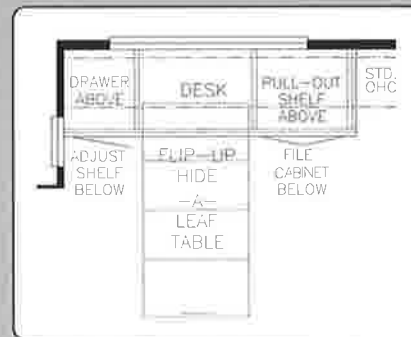
FLOORPLAN OPTIONS



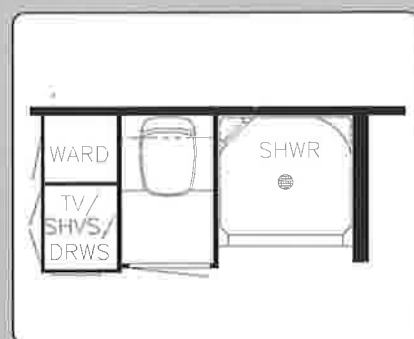
K096
TWIN BEDS
KSCA: 3758, 3766



K950
HONEYMOON SUITE
KSCA: 3758, 3762



K125
DINETTE COMPUTER STATION COMBO
IN LIEU OF DINETTE TABLE
KSCA: 3357, 3560, 3758, 3762



P201
ENCLOSED STOOL OPTION
KSCA: 3758

KOUNTRY STAR CLASS A FREIGHTLINER CHASSIS

Model	Engine HP	Axle Ratio	Fuel Cap.	Wheel Base	Front GAWR	Rear GAWR	GVWR	GCWR	Approx. UVW	Approx. NCC
2001KSCA3058	225	4.10	60	178	7000	13,500	20,500	25,500	16,608	3,892
2001KSCA3357	225	4.10	60	200	7000	13,500	20,500	25,500	17,470	3,030

KOUNTRY STAR CLASS A FORD CHASSIS

Model	Engine HP	Axle Ratio	Fuel Cap.	Wheel Base	Front GAWR	Rear GAWR	GVWR	GCWR	Approx. UVW	Approx. NCC
2001KSCA3058	310	5.38	75	178	7000	13,500	20,500	26,000	16,008	4,492
2001KSCA3357	310	5.38	75	208	7000	13,500	20,500	26,000	16,870	3,630
2001KSCA3560	310	5.38	75	220	7000	13,500	20,500	26,000	17,463	3,037
2001KSCA3758	310	5.38	75	234	7000	13,500	20,500	26,000	17,473	3,027
2001KSCA3762	310	5.38	75	234	7000	13,500	20,500	26,000	17,324	3,176
2001KSCA3766	310	5.38	75	234	7000	13,500	20,500	26,000	17,540	2,960

KOUNTRY STAR CLASS A WORKHORSE CHASSIS

Model	Engine HP	Axle Ratio	Fuel Cap.	Wheel Base	Front GAWR	Rear GAWR	GVWR	GCWR	Approx. UVW	Approx. NCC
2001KSCA3058	340	4.78	75	178	7000	14,000	22,000	26,000	16,343	5,657
2001KSCA3357	340	4.78	75	208	8,000	14,000	22,000	26,000	17,205	4,795
2001KSCA3560	340	4.78	75	220	8,000	14,000	22,000	26,000	17,798	4,202
2001KSCA3758	340	4.78	75	240	8,000	14,000	22,000	26,000	17,808	4,192
2001KSCA3762	340	4.78	75	240	8,000	14,000	22,000	26,000	17,659	4,341
2001KSCA3766	340	4.78	75	240	8,000	14,000	22,000	26,000	17,875	4,125

*LENGTHS, HEIGHTS, WIDTHS AND DRY WEIGHTS ARE APPROXIMATE. WEIGHT WILL VARY BASED ON OPTIONAL EQUIPMENT ADDED TO THE ABOVE BASE WEIGHT.

STANDARD FEATURES

MOTORIZED CHASSIS FEATURES

- Standard Chassis – Freightliner
- Cruise Control
- Stainless Steel Wheel Simulators

AID CONDITIONING & HEATING

- 15,000 BTU Brisk® Central Air Conditioner
- Dash Heater/Air Conditioner High Output
- LP Leak Detector

APPLIANCES & ACCESSORIES

- 6-Gallon Gas/Electric Water Heater – Direct Spark Ignition
- 27" Color TV In Dash Overhead (27" TV in Entertainment Center—3058)
- Spacesaver Microwave
- 3-Burner Recessed Range with Glass Oven Door (piezzo ignition)
- 27" Color TV In Dash Overhead
- AM/FM Stereo with CD Player (in dash)
- Cable TV Connection with RG6 Coax
- Ceiling Fan in Bedroom (available on 3550, 3566)
- Dometic® 3862 Refrigerator (8 cu. ft.)
- Satellite Prep – Phone/TV Jack and Recept
- TV Antenna with Power Booster & Two Jacks

CABINETS & FURNITURE

- Flexsteel® Swivel/Recline Front Seats with 3-Point Seat Belt
- Flexsteel® Swivel Barrel Chair (where shown on floor plan drawing)

- Drawers with Metal Guides
- Hidden Leaf Dinette Table with Two Fixed Chairs and Two Folding Chairs
- Oak Hardwood Raised Panel Doors on Overhead Cabinets, Flat Panel Doors on Base Cabinets
- One-Piece Cultured Marble Lavatory Countertop in Bath
- Solid Surface Countertop in Kitchen with Color-Coordinated Edge and Acrylic Sink

ELECTRICAL FEATURES

- 55-Amp Converter with Charger
- 2 – 6-Volt Batteries
- Battery Disconnect (for house battery)
- 6.6 Generac® Generator with LP Conversion and Automatic Changeover
- 5-Watt Solar Panel to Charge Chassis Battery
- 50-Amp Electrical Service with Flexible Cord
- Driving Lights
- Emergency Engine Start Switch
- Exterior Security Lights (one installed on each side)
- Interior Courtesy Lights
- Lights in Exterior Storage Compartments
- Lights in Wardrobes

EXTERIOR FEATURES

- BriteTek Roof with 7MM Decking
- Convex Exterior Mirrors with Remote Control and Defrost
- Gel-Coated Fiberglass Exterior Sides
- Hitch for Towing Car (with two extra 14-gauge wires for customer use) (class-3, 5000# rating)
- Roof Rack & Ladder

INTERIOR FEATURES

- Carpeting – Nylon with Scotchguard® Stain Release
- Vinyl Floor in Kitchen and Bath Area
- Day/Night Pleated Window Shades & Lambrequins
- Quilted Bedspread with Reverse Sham & Accent Pillow
- Woven Soft Touch Ceiling

PLUMBING/BATH FEATURES

- China Stool with Spray Attachment
- Exterior Shower (located on off door side)
- Fiberglass Tub/Shower with Glass Shower Door
- Monitor Panel
- Sewage Holding Tank Rinse
- Water Heater Bypass System

CONSTRUCTION FEATURES

- Aluminum Frame Sidewalls & Roof Construction, 16" On Center

WINDOWS, AWNINGS & VENTS

- Automatic Double Entrance Door Step
- Fan-tastic Vent with Rain Sensor in Kitchen
- Power Vent in Bath Area with Wall Switch
- Skylight in Bathroom (located above tub/shower)
- Tinted Safety Glass Windows

OPTIONAL FEATURES

APPLIANCES & ACCESSORIES

- Dometic® 1062 Refrigerator (10 cu. ft.) [91 lbs.]
- Rear View Monitor System [5 lbs.]
- 30" Convection Microwave with 3-Burner Cooktop [13 lbs.]
- Ceiling Fan in Bedroom (available on 3550, 3655) [10 lbs.]

CABINETS & FURNITURE

- Snow Maple Cabinets [0 lbs.]
- Leathermate Front Seats with 6-Way Power, Power Lumbar & Ergo-Flex Arms [50 lbs.]

ELECTRICAL FEATURES

- 400-Watt Inverter (for dash TV) [10 lbs.]

INTERIOR FEATURES

- Simulated Plank Floor in Kitchen Area [37 lbs.]

[] – INDICATES THE NET DIFFERENCE IN WEIGHT WITH THIS OPTION

SPECIFICATIONS

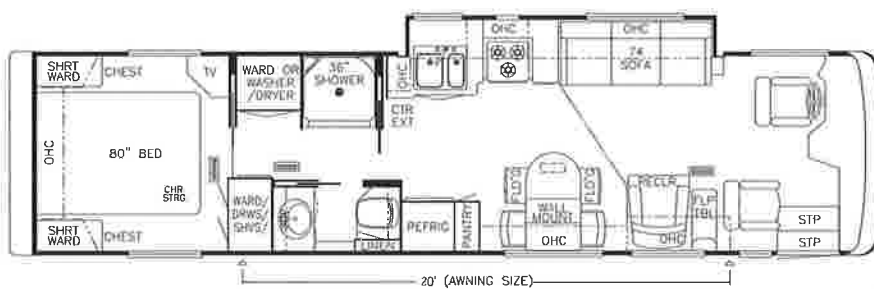
MODEL 2001 KSDP 3650

Length (overall):	36' 11"
Width (overall):	101'
Height (overall):	11' 8"
Width (interior):	95.5'
Height (interior):	78"
Grey:	65
Sewage:	45
Water:	105
LP:	32
Furnace:	35,000
Water Heater:	6



MODEL 2001 KSDP 3665

Length (overall):	36' 11"
Width (overall):	101'
Height (overall):	11' 8"
Width (interior):	95.5'
Height (interior):	78"
Grey:	65
Sewage:	45
Water:	105
LP:	32
Furnace:	35,000
Water Heater:	6

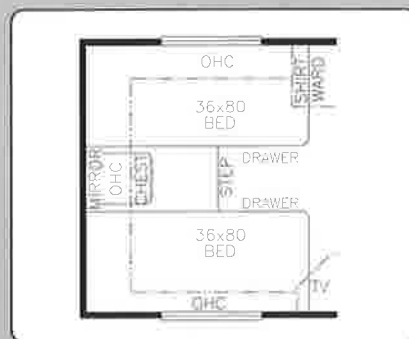


THE KOUNTRY STAR DIESEL PUSHER

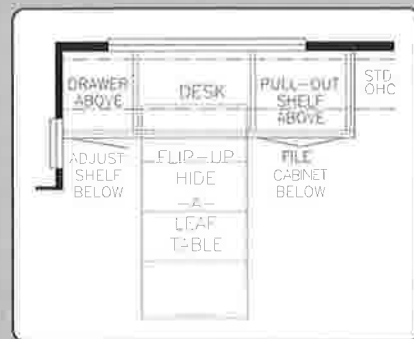
FLOORPLAN OPTIONS



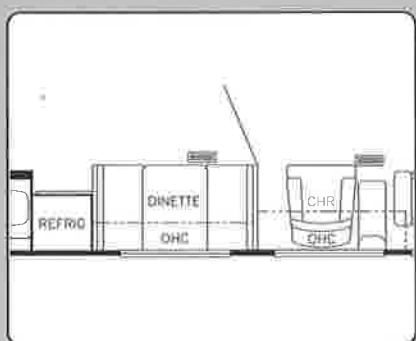
K105
75" TWIN BEDS
KSDP: 3665



K109
80" TWIN BEDS
KSDP: 3650



K125
DINETTE COMPUTER STATION COMBO
IN LIEU OF DINETTE TABLE
KSCA: 3650



K276
BOOTH DINETTE WITH DRAWERS IN LIEU OF
FREESTANDING OR WALL MOUNT DINETTE
KSDP: 3665

KOUNTRY STAR DIESEL PUSHER FREIGHTLINER CHASSIS

Model	Engine HP	Axle Ratio	Fuel Cap.	Wheel Base	Front GAWR	Rear GAWR	GVWR	GCWR	Approx. UVW	Approx. NCC
2001KSDP3650	300	4.63	100	228	10,410	17,000	27,410	37,410	20,440	6,970
2001KSDP3665	300	4.63	100	228	10,410	17,000	27,410	37,410	20,580	6,830

DON'T FORGET TO CHECK OUT THE NEWMAR KOUNTRY KLUB. ALL YOU NEED FOR ELIGIBILITY IS TO BE A PROUD OWNER OF ANY OF THE FINE NEWMAR RECREATIONAL VEHICLES.

WE INVITE YOU TO VISIT OUR STATE-OF-THE-ART PRODUCTION FACILITY IN NAPPANEE, INDIANA. PLANT TOURS ARE OFFERED AT 10:00 A.M. AND 1:00 P.M., MONDAY THROUGH FRIDAY.



NEWMAR QUALITY: A WAY OF LIFE

355 N. DELAWARE STREET
NAPPANEE, INDIANA 46550
PH: 219.773.7791 • WWW.NEWMARCORP.COM

PRICES, SPECIFICATIONS AND FLOORPLANS ARE SUBJECT TO CHANGE AT NEWMAR'S DISCRETION WITHOUT PRIOR WRITTEN NOTICE OR OBLIGATION. PLEASE SEE YOUR DEALER FOR ACTUAL SAMPLES AND SPECIFICATIONS. ©2000 NEWMAR CORPORATION. PRINTED IN THE U.S.A. (9/00)