

2 0 0 1 M O U N T A I N A I R E



D I E S E L P U S H E R • C L A S S A

N E W M A R C O R P O R A T I O N



"GO CONFIDENTLY IN THE DIRECTION
OF YOUR DREAMS. LIVE THE LIFE
YOU HAVE IMAGINED."

HENRY DAVID THOREAU

CHOICE.

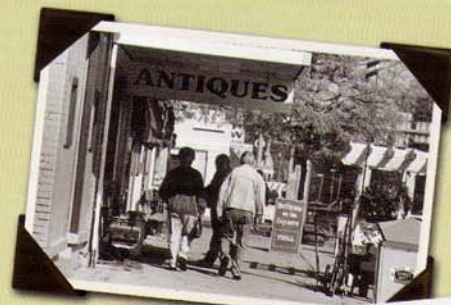
Every Mountain Aire motorhome starts its journey the same way. It begins under the care of devoted craftspeople who build it with devotion and a legendary attention to detail in Nappanee, Indiana. Where the journey leads from there is up to you.

Today, for instance, you have an important decision to make. Head north for Taos and lunch at the La Fonda Hotel or southeast for an overnight at the White Sands National Monument. Either way, it's going to be a day to remember.

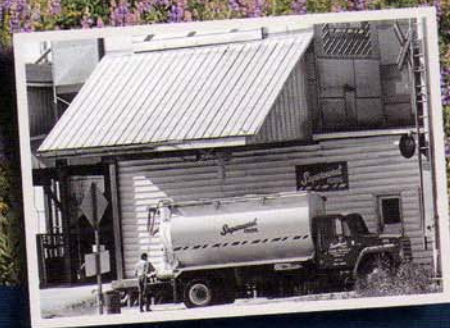
Of course, you make a smart decision when you choose the Mountain Aire. Our craftspeople have created a high-line motorhome for you that is packed full of choices. Class A gas powered or Diesel Pusher? Abundant floorplan options. Thirty-three-, thirty-five-, or thirty-seven-foot lengths. Lots of available interior and exterior colors. You select options to reflect your unique lifestyle. You make it your own.

Regardless of how your Mountain Aire is equipped, it carries the Newmar name, so you know it has the excellence, resale value and amenities you expect. For us, building the Mountain Aire is a pure act of devotion. The Mountain Aire is an expression of our dedication, caring and craftsmanship. You know you made the right choice.

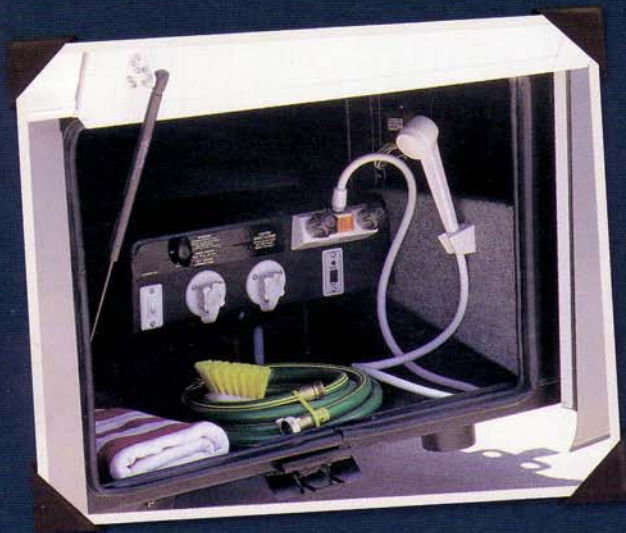
NEWMAR QUALITY: A WAY OF LIFE.



THE MOUNTAIN AIRE DIESEL PUSHER



MOUNTAIN AIRE. YOU MADE THE RIGHT

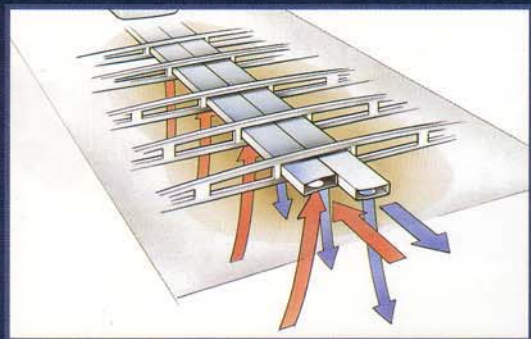


EXTERIOR WASH STATION MAKES CLEAN UP EASY.

Of course your Mountain Aire Diesel Pusher handles the highway like a champion, without missing a beat when it comes to style. You expect no less. Newmar's dedication to workmanship and quality really shines. Three exterior packages and a basecoat/clearcoat paint application, just like the one used on premium automobiles, means your Mountain Aire will look good for years to come. And you'll look good for choosing it.



CHOICE.



BECAUSE NEWMAR FRAMES ITS UNITS LIKE THE FRAMING IN YOUR HOME, WE CAN PROVIDE TRUE CENTRAL AIR CONDITIONING. VENTS THROUGHOUT DELIVER COOL AIR AND RETURN WARM AIR, ALLOWING YOU TO CLOSE THE DOOR TO A ROOM AND STILL ENJOY TOTAL COMFORT.



BECAUSE OF THE WEIGHT OF A DIESEL PUSHER ENGINE, NEWMAR ADDS A BRIDGE-LIKE TRUSS STRUCTURE THAT ELIMINATES UNDUE STRESS ON THE SIDEWALLS.

THE MOUNTAIN AIRE DIESEL PUSHER



STAYING INSIDE LOOKS BETTER ALL THE



THIS KITCHEN FEATURES A 0.8 CUBIC FOOT MICROWAVE, A REFRIGERATOR WITH MATCHING DOOR PANELS AND 8 CUBIC FEET OF STORAGE, AND THREE-BURNER GAS STOVE WITH COVER. SHOWN WITH OAK CABINETY.

It's really hot outside, but not in here. You have two choices. Hike the quarter mile down to the lake and make some waves, or just stay put. Newmar comfort starts where the other guys leave off, because we can never be totally satisfied unless we know that you are. That's why we provide amenities like the luxurious Mountain Aire dual air conditioners. Your choices beckon; the recliner or the lake. Take your time to decide. Have another glass of iced tea and think about it for awhile. Turn on the television and catch the last quarter of the game. Chill out. After all, the lake isn't going anywhere.



LUXURIOUS KITCHEN AND LIVING AREA, SHOWN IN AUBERGINE AND OPTIONAL CHERRY HARDWOOD.



TIME.



OAK CABINETS AND BUILT-IN NIGHTSTANDS SURROUND THE COMFORTABLE QUEEN-SIZE BED, SHOWN IN CINNABAR TAN.

NEWMAR'S FLAT-FLOOR POWER SLIDEOUT FEATURES A LIVING AREA SHOWN WITH AN OPTIONAL DESK/DINETTE, USEFUL BOTH ON THE ROAD AND AT YOUR STOP, SHOWN IN CINNABAR TAN/OAK.



AN OPTIONAL L-SHAPED LEATHER-MATE SOFA, CONVENIENTLY POSITIONED, OFFERS COMFORT AND ELEGANCE.

THE MOUNTAIN AIRE CLASS A



DEPEND ON MOUNTAIN AIRE TO TAKE YOU

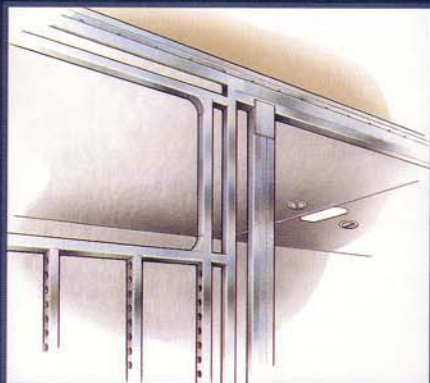
You travel in confidence. The miles slip by one after the other. The powerful engine carries the Mountain Aire effortlessly. The higher you go, the cooler the day becomes. Impeccable craftsmanship surrounds you. Newmar quality is apparent in every detail. Open your window and breathe in the pine and clear mountain air. At the top, your destination, you are treated to sunset, then twilight, then starry skies. Some things in life you can truly depend on.



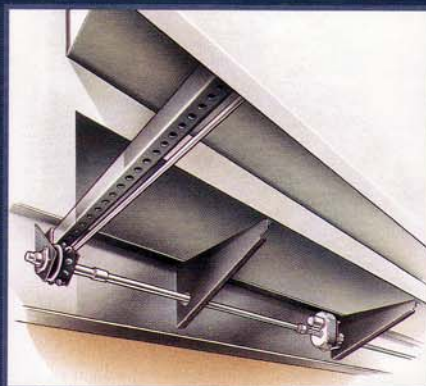
BASEMENT STORAGE IS EASY TO ACCESS, EASY TO LOAD.

MODEL SHOWN IS MACA 3797.

THERE.



WE PREFER SIDEWALL FRAMING 16 INCHES ON CENTER WITH ALUMINUM STUDS. WHY? BECAUSE THIS CONSTRUCTION PROVIDES ROOM FOR MORE INSULATION AND ALLOWS WALL OUTLETS TO BE POSITIONED LIKE THOSE IN YOUR HOME. IN ADDITION, THIS SIDEWALL DOESN'T DEPEND ON THE LAMINATION PROCESS FOR ITS STRENGTH.



NEWMAR IS THE PIONEER IN FLAT-FLOOR POWERED SLIDEOUTS. WE BUILD EVERY SLIDEOUT OURSELVES, USING A RACK AND PINION SYSTEM AND A CENTRALLY LOCATED ELECTRIC MOTOR THAT APPLIES POWER EVENLY TO BOTH RACKS.

THE MOUNTAIN AIRE CLASS A



MOUNTAIN AIRE. ROUGHING IT, NEWMAR



THIS KITCHEN FEATURES AN L-SHAPED COUNTER, THREE-BURNER STOVE, 0.8 CUBIC FOOT MICROWAVE, ACRYLIC SINK, MATCHING REFRIGERATOR PANELS ON 8 CUBIC FOOT UNIT AND OUTWARD FACING CABINETS ABOVE PENINSULA, SURROUNDED IN OAK HARDWOOD CABINETS.

Central air conditioning. A 10-gallon water heater. Corian® countertops in the kitchen and bathroom. Stain resistant carpeting. Oak and hardwood cabinets. An optional premium stereo with a 10-disc CD changer. Workmanship that exceeds all your expectations. The best thing of all? Roughing it in Mountain Aire means you can leave the tent at home.

MODELS SHOWN ARE MACA 3758, 3797.



FERN DECOR AND FROSTED MAPLE HARDWOOD CABINETS ADORN THIS KITCHEN AND LIVING AREA.

STYLE.



A PASSENGER SIDE SLIDEOUT TRAY PROVIDES A CONVENIENT AREA FOR EATING, READING OR YOUR LAPTOP.



OPTIONAL FROSTED MAPLE CABINETS SURROUND A QUEEN-SIZE BED WITH QUILTED BEDSPREAD, PILLOW SHAMS, MATCHING BED SKIRT AND ACCENT PILLOW.



NEWMAR'S FLAT-FLOOR POWERED SLIDEOUT FEATURES A HIDDEN LEAF DINETTE TABLE AND SOFA SHOWN IN OPTIONAL LEATHER AND SURROUNDED IN OAK HARDWOOD.

"WE MASS PRODUCE IN VOLUMES OF ONE."

"It is my deepest belief that we need to treat others as we treat ourselves, that I should treat our customers in the same manner as I would want to be treated. I believe these values helped make our company what it is today. They affect everything we do."



QUALITY DESIGN "We don't take short cuts, we construct. No matter what Newmar model our customers bought, they were assembled on the same production line, built with the same high standards and care."

TESTING "We test everything. All of our motorhomes, for instance, are tested for leaks, for alignment and for weight before they leave the assembly line. We want to be sure our products work the way our customers expect them to work."

INNOVATIONS "We innovate for the long-term quality of our customer's life. For example, there's our flat-floor power slide out, which gives our customers as much living space as possible. We offer practical features that will make your life in a Newmar RV easier."

INDIVIDUAL RESPONSIBILITY "If one of our quality-control inspectors finds a problem in the plumbing, they pull a worker from the plumbing team to fix it. We believe it's the team's responsibility, no one else's. Our workers feel a personal obligation to make a customer's RV the best possible."

NEWMAR QUALITY "When it's all said and done, this translates to Newmar Quality. Customers must be able to enjoy their Newmar RV for years to come. There is no other way for us."

When we say 'Newmar Quality: A Way of Life,' we truly live it."

Virgil Miller, President, Newmar Corp.



NEWMAR QUALITY: A WAY OF LIFE

355 N. DELAWARE STREET
NAPPANEE, INDIANA 46550
PH: 219.773.7791 • WWW.NEWMARCORP.COM

WE INVITE YOU TO VISIT OUR STATE-OF-THE-ART PRODUCTION FACILITY
IN NAPPANEE, INDIANA. PLANT TOURS ARE OFFERED
AT 10:00 A.M. AND 1:00 P.M., MONDAY THROUGH FRIDAY.

DON'T FORGET TO CHECK OUT THE NEWMAR KOUNTRY KLUB. ALL YOU NEED FOR ELIGIBILITY IS TO BE A PROUD OWNER OF ANY OF THE FINE NEWMAR RECREATIONAL VEHICLES.

FOR A COMPLETE PHOTO GALLERY OF ALL NEWMAR PRODUCTS, VISIT OUR WEBSITE: WWW.NEWMARCORP.COM

SOME FEATURES SHOWN IN OUR LITERATURE ARE OPTIONAL. COLORS AND FINISHES ARE PHOTOGRAPHIC REPRESENTATIONS AND MAY APPEAR DIFFERENTLY WHEN VIEWING ACTUAL MATERIALS. PRICES, SPECIFICATIONS AND FLOORPLANS ARE SUBJECT TO CHANGE AT NEWMAR'S DISCRETION WITHOUT PRIOR WRITTEN NOTICE OR OBLIGATION. PLEASE SEE YOUR DEALER FOR ACTUAL SAMPLES AND SPECIFICATIONS.

2001 MOUNTAIN AIRE DIESEL PUSHER

OPTIONAL PAINT SCHEMES



FULL PAINT GREEN GRAPHICS

NEW FOR 2001, NEWMAR IS OFFERING FOUR BEAUTIFUL PAINT SCHEME OPTIONS AVAILABLE FOR THE MOUNTAIN AIRE DIESEL PUSHER. NEWMAR'S TWO STATE-OF-THE-ART PAINT SHOPS MAKE IT POSSIBLE TO PROVIDE THESE QUALITY PAINTED GRAPHICS.



FULL PAINT SUEDE GRAPHICS



FULL PAINT PACIFIC BLUE GRAPHICS



FULL PAINT CHARCOAL GRAPHICS



NEWMAR QUALITY: A WAY OF LIFE

355 NORTH DELAWARE STREET • PO BOX 30

NAPPANEE, INDIANA 46550

PH: 219-773-7791 • FX: 219-773-2895

WWW.NEWMARCORP.COM

COLORS AND FINISHES ARE PHOTOGRAPHIC REPRESENTATIONS AND MAY APPEAR DIFFERENTLY WHEN VIEWING ACTUAL MATERIALS. PAINT COLORS AND GRAPHICS ARE SUBJECT TO CHANGE AT NEWMAR'S DISCRETION WITHOUT PRIOR WRITTEN NOTICE OR OBLIGATION. PLEASE SEE YOUR DEALER FOR ACTUAL SAMPLES AND SPECIFICATIONS. ©2000 NEWMAR CORPORATION, PRINTED IN THE U.S.A. (11/00)

2 0 0 1 M O U N T A I N A I R E



C L A S S A • D I E S E L P U S H E R
S P E C I F I C A T I O N S



N E W M A R C O R P O R A T I O N

STANDARD FEATURES

MOTORIZED CHASSIS FEATURES

- Standard Chassis – Ford F-53 Chassis with V-10 Engine
- Cruise Control
- Tilt Steering Wheel

AIR CONDITIONING & HEATING

- 13,500 BTU Penguin® Central Air Conditioner
- Dash Heater/Air Conditioner High Output
- LP Leak Detector

APPLIANCES & ACCESSORIES

- 10-Gallon Gas/Electric Water Heater – Direct Spark Ignition
- Spacesaver Microwave
- 27" Color TV In-Dash Overhead
- Color TV in Bedroom
- 3-Burner Recessed Range with Glass Oven Door (electronic ignition)
- AM/FM Stereo with CD Player (in dash)
- Cable TV Connection with RG6 Coax
- Dometic® 3862 Refrigerator (8 cu. ft.)
- Rear View Color Monitor System
- Satellite Prep – Phone/TV Jack and Recept
- Telephone Connection with One Phone Jack
- TV Antenna with Power Booster & Two Jacks

CABINETS & FURNITURE

- Flexsteel® Swivel/Recline Front Seats with Three-Point Seat Belt
- Flexsteel® Rocker/Recliner with Adjustable Headrest
- Six-Way Power Driver's Seat

- Corian® Countertop in Kitchen with Color Coordinated Edge and Acrylic Sink
- Corian® Countertop with Color Coordinated Edge and Porcelain Lavatory in Bath
- Drawers with Metal Guides
- Hidden Leaf Dinette Table with Two Fixed Chairs and Two Folding Chairs
- Oak Hardwood Cabinets with Raised Panel Double Arched Doors

ELECTRICAL FEATURES

- 2 – 45-Amp Converters
- Battery Disconnect (for house battery)
- 6.6Kw Generac® Generator with Remote Switch and Automatic Changeover
- 5-Watt Solar Panel to Charge Chassis Battery
- 50-Amp Electrical Service with Flexible Cord
- Daytime Headlight System
- Driving Lights
- Emergency Engine Start Switch
- Exterior Security Lights (one installed on each side)
- Interior Courtesy Lights
- Lights in Exterior Storage Compartments
- Lights in Wardrobes

EXTERIOR FEATURES

- Brite-Tek Roof with 7MM Decking
- Convex Exterior Mirrors with Remote Control and Defrost
- Gel-Coated Fiberglass Exterior Sides
- Hitch for Towing Car (with two extra 14-gauge wires for customer use) (class-3, 5000# rating)
- Hydraulic Leveling Jacks with "Touch" Manual Control
- Roof Rack & Ladder

INTERIOR FEATURES

- Carpeting – Nylon with Scotchguard® Stain Release
- Simulated Plank Floor in Kitchen and Bath Area
- Day/Night Pleated Window Shades & Lambrequins
- Padded Vinyl Ceiling
- Quilted Bedspread with Pillow Shams, Matching Bed Base & Accent Pillow

PLUMBING/BATH FEATURES

- China Stool with Spray Attachment
- Exterior Shower (located on off door side)
- Fiberglass Tub/Shower with Glass Shower Door
- Monitor Panel
- Sewage Holding Tank Rinse
- Water Heater Bypass System

CONSTRUCTION FEATURES

- Aluminum Frame Sidewalls & Roof Construction, 16" On Center

WINDOWS, AWNINGS & VENTS

- Automatic Double Entrance Door Step
- Fan-tastic Vent with Rain Sensor in Kitchen
- Power Vent in Bath Area with Wall Switch
- A&E 9000 Side Awning
- Lighted Acrylic Assist Handle at Entrance Door
- Skylight in Bathroom with Soft Shade (located above tub/shower)
- Stainless Steel Wheel Simulators
- Tinted Safety Glass Windows

OPTIONAL FEATURES

APPLIANCES & ACCESSORIES

- 30" Convection Microwave with Three-Burner Cooktop [13 lbs.]
- Ceiling Fan in Bedroom (available on 3356, 3559, 3758, 3762, 3766, 3780, 3796, 3798) [10 lbs.]
- Compact Washer/Dryer (available on 3566, 3559, 3758, 3762, 3766, 3780, 3798) [185 lbs.]
- Dometic® 1062 Refrigerator (10 cu. ft.) [91 lbs.]

CABINETS & FURNITURE

- Leather/Vinyl Front Seats with Six-Way Power, Power Lumbar & Ergo-Flex Arms [36 lbs.]
- Built-in Booth Dinette in lieu of Standard (available on 3356, 3357, 3559, 3758, 3762, 3766, 3781, 3798) [23 lbs.]
- Cherry Hardwood Cabinets [0 lbs.]
- Frosted Maple Hardwood Cabinets [0 lbs.]

ELECTRICAL FEATURES

- 400-Watt Inverter (for dash TV) [10 lbs.]
- Roof-Mounted Spot Light [3 lbs.]

INTERIOR FEATURES

- Ceramic Floor Tile in Bath Area [75 lbs.]

SPECIFICATIONS

MODEL 2001 MACA 3356

Length (overall):	33'6"
Width (overall):	100'
Height (overall):	11'8"
Width (interior):	94'
Height (interior):	78'
Grey:	50
Sewage:	50
Water:	56
LP:	32
Furnace:	35,000
Water Heater:	10



MODEL 2001 MACA 3357

Length (overall):	33'6"
Width (overall):	100'
Height (overall):	11'8"
Width (interior):	94'
Height (interior):	78'
Grey:	50
Sewage:	50
Water:	56
LP:	32
Furnace:	35,000
Water Heater:	10



MODEL 2001 MACA 3559

Length (overall):	35'6"
Width (overall):	100'
Height (overall):	11'8"
Width (interior):	94'
Height (interior):	78'
Grey:	50
Sewage:	50
Water:	56
LP:	32
Furnace:	35,000
Water Heater:	10



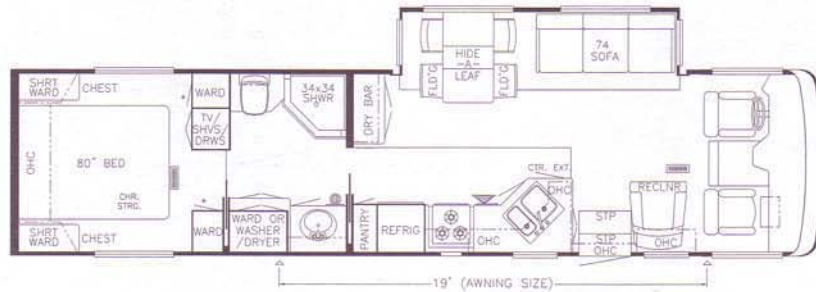
MODEL 2001 MACA 3566

Length (overall):	35'6"
Width (overall):	100'
Height (overall):	11'8"
Width (interior):	94'
Height (interior):	78'
Grey:	50
Sewage:	50
Water:	56
LP:	32
Furnace:	35,000
Water Heater:	10



MODEL 2001 MACA 3758

Length (overall):	37'7"
Width (overall):	100'
Height (overall):	11'8"
Width (interior):	94'
Height (interior):	78'
Grey:	50
Sewage:	50
Water:	56
LP:	32
Furnace:	42,000
Water Heater:	10



SPECIFICATIONS

**MODEL
2001 MACA 3762**

Length (overall):	37'7"
Width (overall):	100"
Height (overall):	11'8"
Width (interior):	94"
Height (interior):	78"
Grey:	50
Sewage:	50
Water:	56
LP:	32
Furnace:	42,000
Water Heater:	10



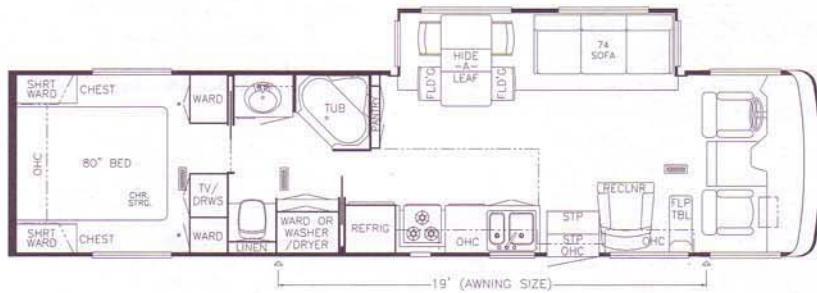
**MODEL
2001 MACA 3766**

Length (overall):	37'7"
Width (overall):	100"
Height (overall):	11'8"
Width (interior):	94"
Height (interior):	78"
Grey:	50
Sewage:	50
Water:	56
LP:	32
Furnace:	42,000
Water Heater:	10



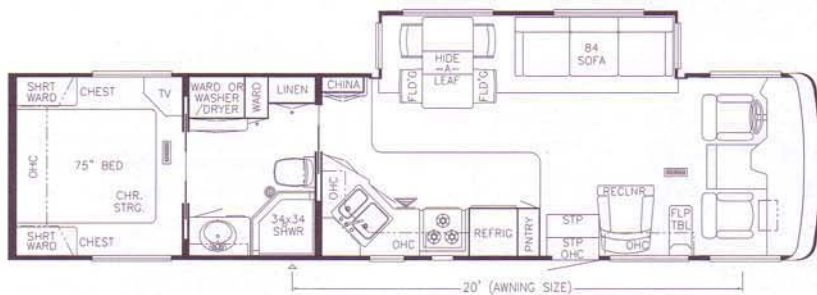
**MODEL
2001 MACA 3780**

Length (overall):	37'7"
Width (overall):	100"
Height (overall):	11'8"
Width (interior):	94"
Height (interior):	78"
Grey:	50
Sewage:	50
Water:	56
LP:	32
Furnace:	42,000
Water Heater:	10

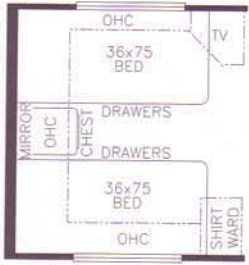


**MODEL
2001 MACA 3798**

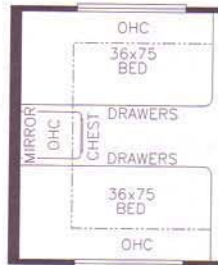
Length (overall):	37'7"
Width (overall):	100"
Height (overall):	11'8"
Width (interior):	94"
Height (interior):	78"
Grey:	50
Sewage:	50
Water:	56
LP:	32
Furnace:	42,000
Water Heater:	10



FLOORPLAN OPTIONS



K094
75" TWIN BEDS
MACA:3798



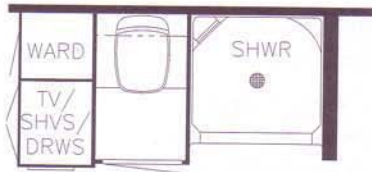
K096
TWIN BEDS
MACA:3758



K122
DINETTE COMPUTER STATION COMBO
IN LIEU OF DINETTE TABLE
MACA:3356, 3357, 3559, 3762,
3780, 3798



K956
HONEYMOON SUITE BEDROOM
MACA:3758



P201
ENCLOSED STOOL OPTION
MACA:3758



P208
ENCLOSED STOOL ROOM WITH
STRAIGHT SHOWER
MACA:3559



STANDARD FEATURES

MOTORIZED CHASSIS FEATURES

- Standard Chassis – Spartan Mountain Master (350 HP)
- Cruise Control
- Polished Aluminum Wheels
- Tilt & Telescope Steering Wheel (Woodgrain & Leather)

AIR CONDITIONING & HEATING

- 2 – 13,500 BTU Penguin® Central Air Conditioners
- LP Leak Detector

APPLIANCES & ACCESSORIES

- 30" Convection Microwave
- 27" Color TV In-Dash Overhead
- Color TV in Bedroom
- 3-Burner Recessed Cooktop (electronic ignition)
- Air Horns
- AM/FM Stereo in Dash with Combination Rear View Color Monitor System
- Cable TV Connection with RG6 Coax
- CB Antenna
- CD Player – Remote Eight-Disc Changer
- Dometic® 1062 Refrigerator with Icemaker (10 cu. ft.)
- Telephone Connection with One Phone Jack
- TV Antenna with Power Booster & Two Jacks
- VCR
- Washer/Dryer Prep (for compact washer/dryer)

CABINETS & FURNITURE

- Flexsteel® Leather/Vinyl Front Seats with Eight-Way Power Lumbar
- Flexsteel® Rocker/Recliner with Adjustable Headrest
- Corian® Countertop in Kitchen with Color Coordinated Edge and Acrylic Sink
- Corian® Countertop with Color Coordinated Edge and Porcelain Lavatory in Bath
- Drawers with Metal Guides
- Hidden Leaf Dinette Table with Two Fixed Chairs and Two Folding Chairs
- Oak Hardwood Cabinets with Raised Panel Double Arched Doors

ELECTRICAL FEATURES

- 2 – 45-Amp Converters
- 4 – 6-Volt House Batteries on Pull-Out Tray
- Battery Disconnect (for house battery)
- 7.0Kw Power Tech Diesel Quiet Series Generator on Slides with Automatic Changeover
- 5-Watt Solar Panel to Charge Chassis Battery
- 50-Amp Electrical Service with Flexible Cord
- Daytime Headlight System
- Driving Lights
- Emergency Engine Start Switch
- Exterior Security Lights (one installed on each side)
- Interior Courtesy Lights
- Lights in Exterior Storage Compartments
- Lights in Wardrobes
- Recessed Docking Lights

EXTERIOR FEATURES

- BriteTek Roof with 7MM Decking
- Convex Exterior Chrome Mirrors with Remote Control and Defrost
- Gel-Coated Fiberglass Exterior Sides
- Hitch for Towing Car (with two extra 14-gauge wires for customer use) (class-3, 5000# rating)
- Hydraulic Leveling Jacks with Automatic Control
- Painted Exterior Graphics with Clear Coat Finish

INTERIOR FEATURES

- Carpeting – Nylon with Scotchguard® Stain Release
- Decorative Sculptured Inlay Design in Living Area Carpet & Accent Rug
- Simulated Plank Floor in Kitchen and Bath Area
- Luxurious Pillow Top Mattress
- Padded Vinyl Ceiling
- Quilted Bedspread with Pillow Shams, Matching Bed Base & Accent Pillow

PLUMBING/BATH FEATURES

- Automatic Rewind Water Hose Reel
- Exterior Convenience Wash Station (hot/cold water, soap & towel dispenser)
- Fiberglass Tub/Shower with Glass Shower Door
- Monitor Panel
- Sewage Holding Tank Rinse
- Water Filter with Drink Dispenser at Kitchen Sink
- Water Heater Bypass System

CONSTRUCTION FEATURES

- Aluminum Frame Sidewalls & Roof Construction, 16" On Center

WINDOWS, AWNINGS & VENTS

- Automatic Double Entrance Door Step
- Fan-tastic Vent with Rain Sensor in Bath
- Fan-tastic Vent with Rain Sensor in Kitchen
- A&E 9000 Side Awning
- Skylight in Bathroom with Soft Shade (located above tub/shower)
- Tinted Safety Glass Windows

OPTIONAL FEATURES

AIR CONDITIONING & HEATING

- 2 - 13,500 BTU Penguin Heat Pump Air Conditioners in lieu of Standard [10 lbs.]
- 2 - 15,000 BTU Brisk Heat Pump Air Conditioners in lieu of Standard [5 lbs.]
- Dash Heat/Air with Automatic Climate Control [0 lbs.]

APPLIANCES & ACCESSORIES

- Ceiling Fan in Bedroom (available on 3763, 3958, 4057, 4060, 4062, 4063, 4066, 4080, 4081) [10 lbs.]

- Compact Washer/Dryer [185 lbs.]
- Navigation System (with seven-disc set) [8 lbs.]
- U-Line Icemaker in lieu of Refrigerator Icemaker (available on 3952, 3958, 4057, 4062, 4080, 4081, 4096, 4095) [52 lbs.]

CABINETS & FURNITURE

- Cherry Hardwood Cabinets [0 lbs.]
- Frosted Maple Hardwood Cabinets [0 lbs.]
- Undermount Corian® Sinks in Kitchen and Bath [25 lbs.]

ELECTRICAL FEATURES

- Heart Freedom 20 Inverter/Charger [50 lbs.]
- Roof-Mounted Spot Light [3 lbs.]

EXTERIOR FEATURES

- Fully Painted Exterior Graphics [0 lbs.]

INTERIOR FEATURES

- Ceramic Floor Tile in Bath Area [75 lbs.]
- Ceramic Floor Tile in Kitchen Area [35 lbs.]
- Hardwood Lambrequin Window Treatment in Living Room [30 lbs.]

[] - INDICATES THE NET DIFFERENCE IN WEIGHT WITH THIS OPTION

SPECIFICATIONS

MODEL 2001 MADP 3763

Length (overall):	37'8"
Width (overall):	100'
Height (overall):	12'0"
Width (interior):	94'
Height (interior):	78'
Grey:	65
Sewage:	45
Water:	105
LP:	32
Furnace:	42,000
Water Heater:	10



MODEL 2001 MADP 3952

Length (overall):	38'8"
Width (overall):	100'
Height (overall):	12'0"
Width (interior):	94'
Height (interior):	78'
Grey:	65
Sewage:	45
Water:	105
LP:	32
Furnace:	42,000
Water Heater:	10



MODEL 2001 MADP 3958

Length (overall):	38'8"
Width (overall):	100'
Height (overall):	12'0"
Width (interior):	94'
Height (interior):	78'
Grey:	65
Sewage:	45
Water:	105
LP:	32
Furnace:	42,000
Water Heater:	10



THE MOUNTAIN AIRE DIESEL PUSHER

SPECIFICATIONS

MODEL 2001 MADP 4057

Length (overall):	40' 8"
Width (overall):	100"
Height (overall):	12' 0"
Width (interior):	94"
Height (interior):	78"
Grey:	65
Sewage:	45
Water:	105
LP:	32
Furnace:	42,000
Water Heater:	10



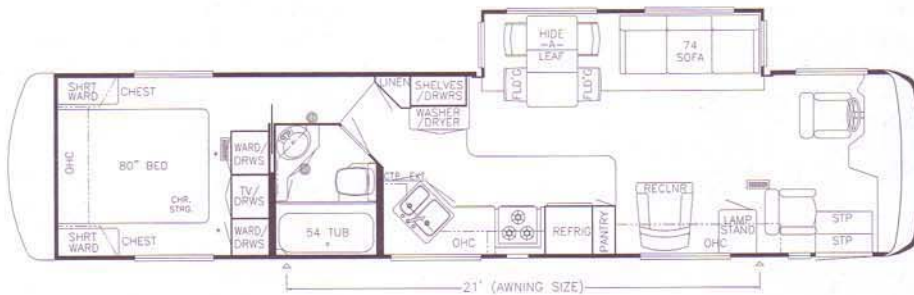
MODEL 2001 MADP 4060

Length (overall):	40' 8"
Width (overall):	100"
Height (overall):	12' 0"
Width (interior):	94"
Height (interior):	78"
Grey:	65
Sewage:	45
Water:	105
LP:	32
Furnace:	42,000
Water Heater:	10



MODEL 2001 MADP 4062

Length (overall):	40' 8"
Width (overall):	100"
Height (overall):	12' 0"
Width (interior):	94"
Height (interior):	78"
Grey:	65
Sewage:	45
Water:	105
LP:	32
Furnace:	42,000
Water Heater:	10



MODEL 2001 MADP 4063

Length (overall):	40' 8"
Width (overall):	100"
Height (overall):	12' 0"
Width (interior):	94"
Height (interior):	78"
Grey:	65
Sewage:	45
Water:	105
LP:	32
Furnace:	42,000
Water Heater:	10



MODEL 2001 MADP 4066

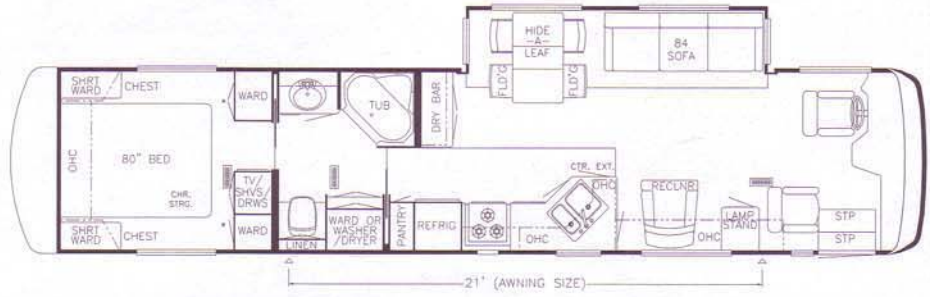
Length (overall):	40' 8"
Width (overall):	100"
Height (overall):	12' 0"
Width (interior):	94"
Height (interior):	78"
Grey:	65
Sewage:	45
Water:	105
LP:	32
Furnace:	42,000
Water Heater:	10



SPECIFICATIONS

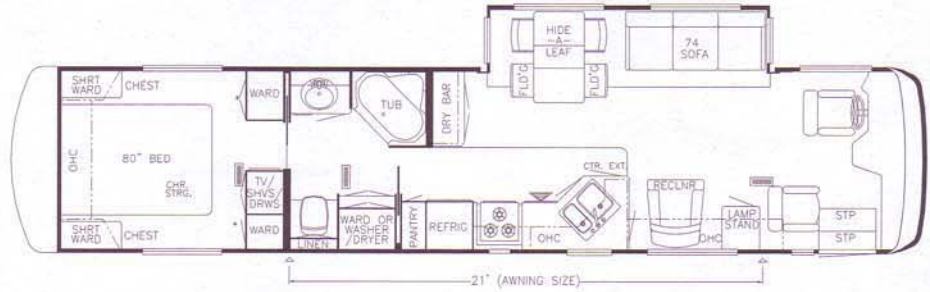
MODEL 2001 MADP 4080

Length (overall):	40' 8"
Width (overall):	100'
Height (overall):	12' 0"
Width (interior):	94'
Height (interior):	78'
Grey:	65
Sewage:	45
Water:	105
LP:	32
Furnace:	42,000
Water Heater:	10



MODEL 2001 MADP 4081

Length (overall):	40' 8"
Width (overall):	100'
Height (overall):	12' 0"
Width (interior):	94'
Height (interior):	78'
Grey:	65
Sewage:	45
Water:	105
LP:	32
Furnace:	42,000
Water Heater:	10



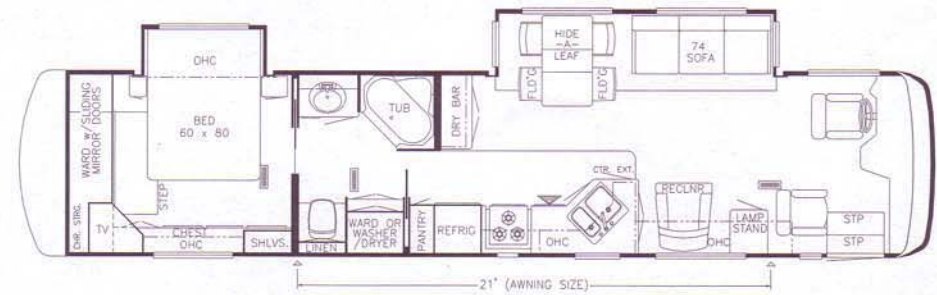
MODEL 2001 MADP 4094

Length (overall):	40' 8"
Width (overall):	100'
Height (overall):	12' 0"
Width (interior):	94'
Height (interior):	78'
Grey:	65
Sewage:	45
Water:	105
LP:	32
Furnace:	42,000
Water Heater:	10



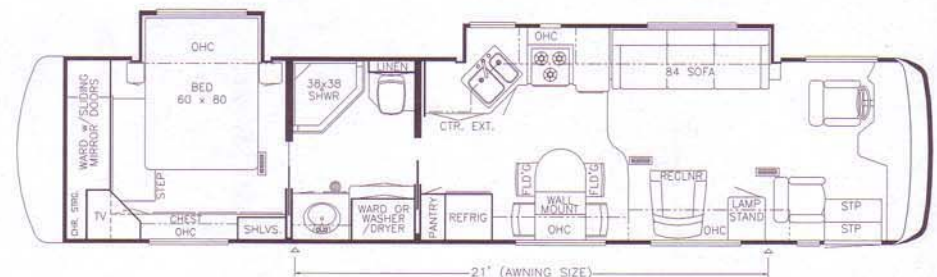
MODEL 2001 MADP 4095

Length (overall):	40' 8"
Width (overall):	100'
Height (overall):	12' 0"
Width (interior):	94'
Height (interior):	78'
Grey:	65
Sewage:	45
Water:	105
LP:	32
Furnace:	42,000
Water Heater:	10



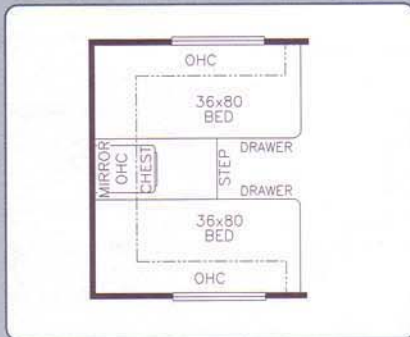
MODEL 2001 MADP 4096

Length (overall):	40' 8"
Width (overall):	100'
Height (overall):	12' 0"
Width (interior):	94'
Height (interior):	78'
Grey:	65
Sewage:	45
Water:	105
LP:	32
Furnace:	42,000
Water Heater:	10

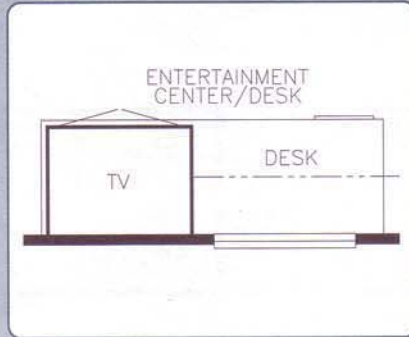


THE MOUNTAIN AIRE DIESEL PUSHER

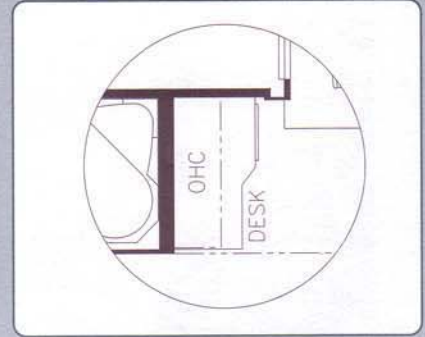
FLOORPLAN OPTIONS



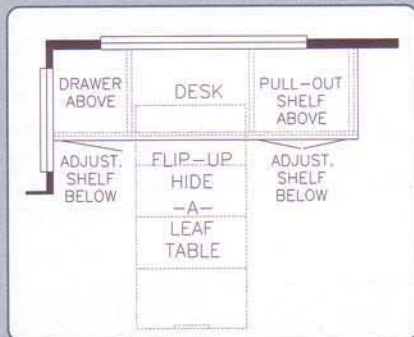
K108
TWIN BEDS
MADP: 40B1



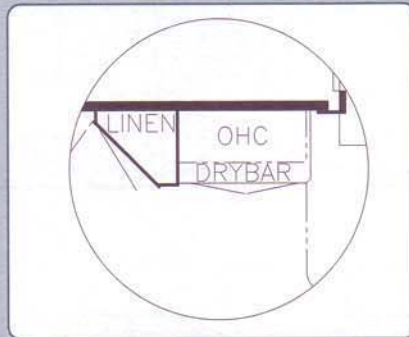
K110
ENTERTAINMENT CENTER 71"
DESK IN LIEU OF RECLINER
AND LAMP STAND
MADP: 4095, 40B1



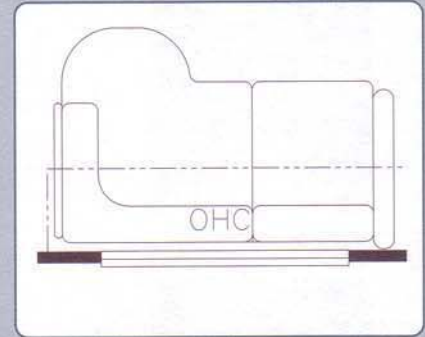
K121
DESK IN LIEU OF DRYBAR
MADP: 4095, 40B1



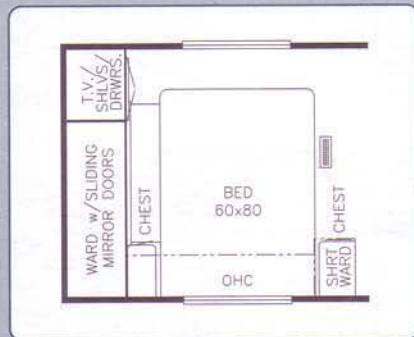
K122
DINETTE COMPUTER STATION
COMBO IN LIEU OF DINETTE TABLE
MADP: 3952, 3958, 4057, 4060,
4062, 4080, 40B1, 4095



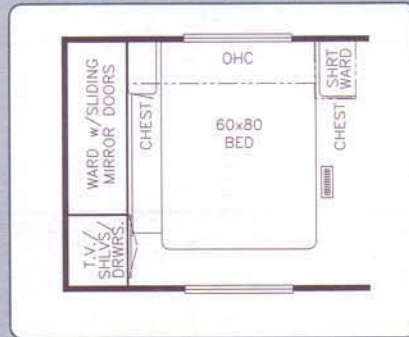
K211
DRY BAR IN LIEU OF
WASHER/DRYER CABINET
MADP: 4062



K910-911
L-SOFA 66" LEATHER WITH INLINER
MADP: 4095



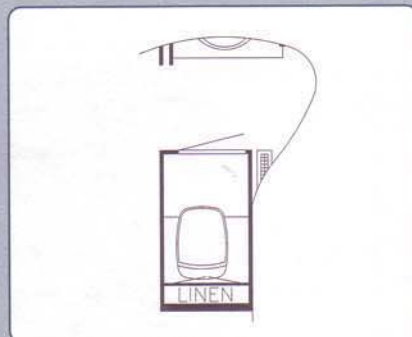
K922
HONEYMOON SUITE
MADP: 4062



K951
HONEYMOON SUITE
MADP: 40B1



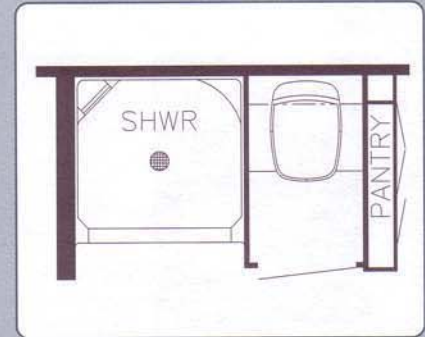
P190
ENCLOSED STOOL ROOM
MADP: 4095, 40B1



P191
ENCLOSED STOOL ROOM
MADP: 3780



P200
ENCLOSED STOOL ROOM WITH
STRAIGHT SHOWER
MADP: 4066, 4096



P202
ENCLOSED STOOL ROOM WITH
STRAIGHT SHOWER
MADP: 3952, 3958

MOUNTAIN AIRE CLASS A FORD CHASSIS

Model	Engine HP	Axle Ratio	Fuel Cap.	Wheel Base	Front GAWR	Rear GAWR	GVWR	GCWR	Approx. UVW	Approx. NCC
2001MACA3356	310	5.38	75	200	7,000	13,500	20,500	26,000	17,074	3,426
2001MACA3357	310	5.38	75	208	7,000	13,500	20,500	26,000	17,545	2,955
2001MACA3559	310	5.38	75	216	7,000	13,500	20,500	26,000	17,863	2,637
2001MACA3566	310	5.38	75	220	7,000	13,500	20,500	26,000	18,173	2,327
2001MACA3758	310	5.38	75	234	7,000	13,500	20,500	26,000	18,255	2,245
2001MACA3762	310	5.38	75	234	7,000	13,500	20,500	26,000	18,133	2,367
2001MACA3766	310	5.38	75	234	7,000	13,500	20,500	26,000	18,349	2,151
2001MACA3780	310	5.38	75	234	7,000	13,500	20,500	26,000	18,208	2,292
2001MACA3798	310	5.38	75	234	7,000	13,500	20,500	26,000	18,282	2,218

MOUNTAIN AIRE CLASS A FREIGHTLINER CHASSIS

Model	Engine HP	Axle Ratio	Fuel Cap.	Wheel Base	Front GAWR	Rear GAWR	GVWR	GCWR	Approx. UVW	Approx. NCC
2001MACA3356	225	4.10	60	200	7,000	13,500	20,500	25,500	17,674	2,826
2001MACA3357	225	4.10	60	200	7,000	13,500	20,500	25,500	18,145	2,355
2001MACA3559	225	4.10	60	216	7,000	13,500	20,500	25,500	18,463	2,037
2001MACA3566	225	4.10	60	220	7,000	13,500	20,500	25,500	18,773	1,727

MOUNTAIN AIRE DIESEL PUSHER SPARTAN CHASSIS

Model	Engine HP	Axle Ratio	Fuel Cap.	Wheel Base	Front GAWR	Rear GAWR	GVWR	GCWR	Approx. UVW	Approx. NCC
2001MADP3763	350	4.63	150	240	12,000	19,000	31,000	41,000	24,484	6,516
2001MADP3952	350	4.63	150	252	12,000	19,000	31,000	41,000	25,201	5,799
2001MADP3958	350	4.63	150	252	12,000	19,000	31,000	41,000	24,716	6,284
2001MADP4057	350	4.63	150	276	12,000	19,000	31,000	41,000	25,614	5,386
2001MADP4060	350	4.63	150	276	12,000	19,000	31,000	41,000	25,797	5,203
2001MADP4062	350	4.63	150	276	12,000	19,000	31,000	41,000	25,669	5,331
2001MADP4063	350	4.63	150	276	12,000	19,000	31,000	41,000	26,049	4,951
2001MADP4066	350	4.63	150	276	12,000	19,000	31,000	41,000	25,749	5,251
2001MADP4080	350	4.63	150	276	12,000	19,000	31,000	36,000	25,844	5,156
2001MADP4081	350	4.63	150	276	12,000	19,000	31,000	41,000	25,782	5,218
2001MADP4094	350	4.63	150	276	12,000	19,000	31,000	41,000	26,537	4,463
2001MADP4095	350	4.63	150	276	12,000	19,000	31,000	41,000	26,290	4,710
2001MADP4096	350	4.63	150	276	12,000	19,000	31,000	41,000	26,321	4,679

MOUNTAIN AIRE DIESEL PUSHER FREIGHTLINER CHASSIS

Model	Engine HP	Axle Ratio	Fuel Cap.	Wheel Base	Front GAWR	Rear GAWR	GVWR	GCWR	Approx. UVW	Approx. NCC
2001MADP3763	330	4.63	150	240	12,000	19,000	31,000	36,000	23,884	7,116
2001MADP3952	330	4.63	150	252	12,000	19,000	31,000	36,000	24,601	6,399
2001MADP3958	330	4.63	150	252	12,000	19,000	31,000	36,000	24,116	6,884
2001MADP4057	330	4.63	150	276	12,000	19,000	31,000	36,000	25,014	5,986
2001MADP4060	330	4.63	150	276	12,000	19,000	31,000	36,000	25,197	5,803
2001MADP4062	330	4.63	150	276	12,000	19,000	31,000	36,000	25,069	5,931
2001MADP4063	330	4.63	150	276	12,000	19,000	31,000	36,000	25,449	5,551
2001MADP4066	330	4.63	150	276	12,000	19,000	31,000	36,000	25,149	5,851
2001MADP4080	330	4.63	150	276	12,000	19,000	31,000	36,000	25,244	5,756
2001MADP4081	330	4.63	150	276	12,000	19,000	31,000	36,000	25,182	5,818
2001MADP4094	330	4.63	150	276	12,000	19,000	31,000	36,000	25,937	5,063
2001MADP4095	330	4.63	150	276	12,000	19,000	31,000	36,000	25,690	5,310
2001MADP4096	330	4.63	150	276	12,000	19,000	31,000	36,000	25,721	5,279

* LENGTHS, HEIGHTS, WIDTHS AND DRY WEIGHTS ARE APPROXIMATE. WEIGHT WILL VARY BASED ON OPTIONAL EQUIPMENT ADDED TO THE ABOVE BASE WEIGHT.



DON'T FORGET TO CHECK OUT THE NEWMAR KOUNTRY KLUB. ALL YOU NEED FOR ELIGIBILITY IS TO BE A PROUD OWNER OF ANY OF THE FINE NEWMAR RECREATIONAL VEHICLES.

WE INVITE YOU TO VISIT OUR STATE-OF-THE-ART PRODUCTION FACILITY IN NAPPANEE, INDIANA. PLANT TOURS ARE OFFERED AT 10:00 A.M. AND 3:00 P.M., MONDAY THROUGH FRIDAY.



NEWMAR QUALITY: A WAY OF LIFE

355 N. DELAWARE STREET
NAPPANEE, INDIANA 46550

PH: 219.773.7791 • WWW.NEWMARCORP.COM

PRICES, SPECIFICATIONS AND FLOORPLANS ARE SUBJECT TO CHANGE AT NEWMAR'S DISCRETION WITHOUT PRIOR WRITTEN NOTICE OR OBLIGATION. PLEASE SEE YOUR DEALER FOR ACTUAL SAMPLES AND SPECIFICATIONS. ©2000 NEWMAR CORPORATION. PRINTED IN THE U.S.A. (6/00)