



Get acquainted with the 2002 Mountain Aire Limited and discover all it has to offer. Designed atop a Spartan K2 Chassis, the Mountain Aire Limited features an impressive 500-horsepower Cummins ISM engine, an internal engine brake and independent front suspension. Its tag axle increases the gross vehicle weight (GVW) to 43,700 lbs. The Mountain Aire Limited offers you variety with two 43' floor plans and comes standard with full-paint available in Mocha Pearl and Smoke color schemes. And with three separate slideouts, the Mountain Aire Limited is different because it transforms into three distinct and spacious living areas. Discover the new Mountain Aire Limited—it's time worth spending.



It's more than brand new, it's different

## 2002 Mountain Aire Limited

*vivid* *freedom*







## Standard Features 2002 Mountain Aire Limited

### motorized chassis features

- Spartan K2 Chassis
- Anti-Lock Braking System
- Polished Aluminum Wheels

### appliances & accessories

- 13,500 BTU (2-13.5m) Penguin® Central Air Conditioners
- 30" Convention Microwave—Stainless Steel Finish
- 27" Color TV in Dash Overhead
- 42" Flat Screen Color TV in Bedroom with Home Theater Sound System
- 2-Burner Cooktop
- AM/FM Radio in Dash with Combination Rear View Monitor System
- Dometic® I292 Refrigerator (12 cu. ft.)
- Remote 8-disc CD Changer for Dash Radio
- Satellite Prep (phone, TV jack and recept)
- Washer and Dryer Prep (compact washer/dryer)

### cabinets & furniture

- Oak Hardwood Cabinets with Raised Panel Double Arched Doors
- Flexsteel® Leather/Vinyl Front Seats with 8-Way Power Lumbar
- Leather/Vinyl Push Back Recliner with Ottoman
- Flexsteel® Easy Bed Sofa with Storage Drawer
- Corian® Countertop in Kitchen with Color-Coordinated Edge and Acrylic Sink
- Dinette Table with Two Fixed Chairs

### electrical features

- 8.0 Power Tech Diesel Quiet Series Generator on Slides with Automatic Changeover
- Interior Courtesy Lights
- Lights in Exterior Storage Compartments
- Lights in Wardrobes

### exterior features

- Brite Tek® Roof with 7mm Decking and Radius Fiberglass Top Wrap
- Fully Painted Exterior Graphics with Clear Coat Finish
- Hydraulic Leveling Jacks with Automatic Control
- Rear Protective Tow Guard with Stainless Steel Newmar Name Cutout

### construction features

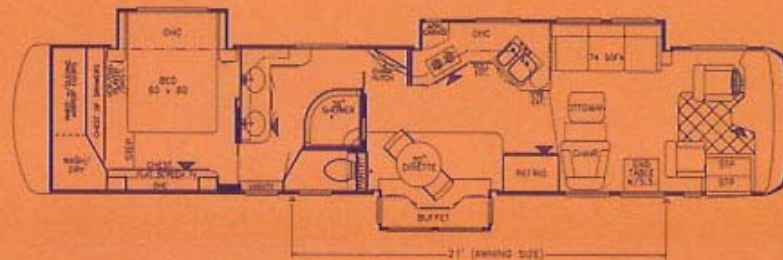
- 5/8" Foam Insulation Laminated in Sidewalls and Ceiling
- Aluminum Frame Sidewalls and Roof Construction, 16" on Center
- R7 Fiberglass Insulation in Sidewalls and Floor, R11 in Roof

## Specifications: 2002 Mountain Aire Limited



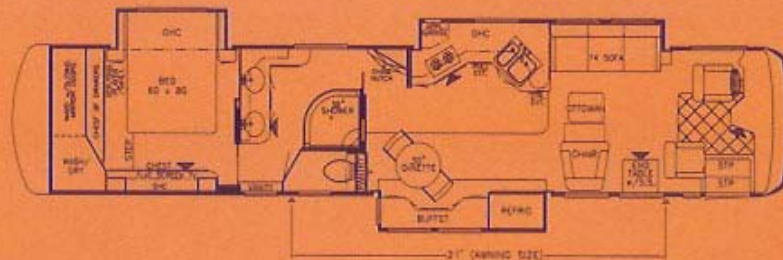
### model MLDP 4370

approx. overall length	43' 8"	sewage	45
width	100"	water	105
approx. overall height	12'	LP	32
interior width	94"	furnace	50,000
interior height	78"	water heater	10
grey	65		



### model MLDP 4371

approx. overall length	43' 8"	sewage	45
width	100"	water	105
approx. overall height	12'	LP	32
interior width	94"	furnace	50,000
interior height	78"	water heater	10
grey	65		



## Chassis Specifications: Mountain Aire Limited

Model	Engine HP	Axle Ratio	Fuel Cap.	Wheel Base	Front GAWR	Rear GAWR	Tag GAWR	GVWR	GCWR	Approx. UVW	Approx. NCC
2002MLDP4370	500	4.11	150	282	13,700	20,000	10,000	43,700	53,700	31,790	11,775
2002MLDP4371	500	4.11	150	282	13,700	20,000	10,000	43,700	53,700	31,925	11,775

\*Lengths, heights, widths and dry weights are approximate. Weight will vary based on optional equipment added to the above base weight.



[www.newmarcorp.com](http://www.newmarcorp.com)

Visit [www.newmarcorp.com](http://www.newmarcorp.com) for a complete list of all available features and options.

Mocha Pearl



Smoke



Some features shown in our literature are optional. Colors and finishes are photographic representations and may appear differently when viewing actual materials. Prices, specifications and floorplans are subject to change at Newmar's discretion without prior written notice or obligation. Please see your dealer for actual samples and specifications.

©2001 Newmar Corporation. Printed in the U.S.A. (11/01)



NEWMAR QUALITY: A WAY OF LIFE

NEWMAR CORPORATION  
355 N DELAWARE ST  
PO BOX 30  
NAPPANEE IN 46550-0030  
219-773-7791 Fax 219-773-2895  
[www.newmarcorp.com](http://www.newmarcorp.com)