



2003 Newmar Kountry Star
FIFTH WHEEL



2003 Newmar Kountry Star
FIFTH WHEEL



KOUNTRY STAR FIFTH WHEEL



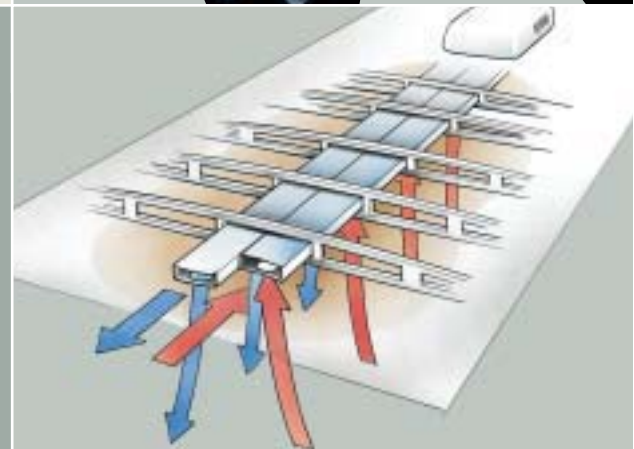
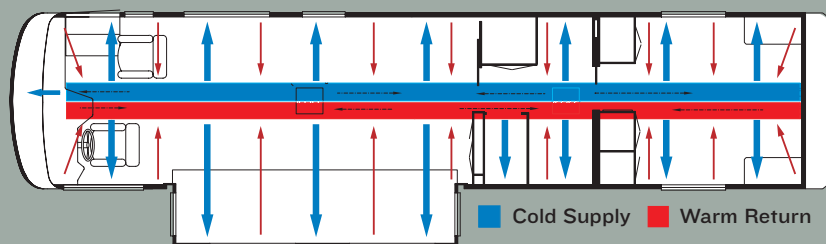
Kountry Star Fifth Wheel FEEL

When you feel good inside, there's an outer glow — a certain something hard to define, yet unmistakable when experienced. That's how we view the Kountry Star Fifth Wheel. It feels good and it shows. New, one-piece front and rear end caps are designed for smooth airflow and smooth looks. Window frames, vent housings and storage doors all integrate cleanly into the sidewall skin. The exterior graphics smartly finish the outer persona. The Kountry Star Fifth Wheel opens the road with the good feeling that freedom always inspires.



NEWMAR'S TRUE CENTRAL AIR SYSTEM —

Newmar's True Central Air utilizes not only full ducting for incoming cool air but also a separate fully ducted system to quickly and effectively remove warm air from every living area. True Central Air is standard on every Newmar.





KSF—35LKSA/Riviera Blue



KSF—33KSF/Heathered Plum



Kountry Star Fifth Wheel **EMBRACE**

It's personal. Your space and time, shared with family and friends. Enjoy it all in the arms of comfort. The Kountry Star Fifth Wheel surrounds you with warm colors and interior accents that complement the elegant wood cabinetry and trim. Four new interior décor choices set in place your individual ambiance. Numerous refinements, including redesigned dinette chairs and bedspread, provide Newmar comfort that's hard to resist. And just like the warmth of a fond embrace, the interior of the Kountry Star Fifth Wheel is always a welcome experience.



newmarcorp.com
STOP BY FOR A VISIT

Like what you see? Maybe you want to learn more about who we are — to discover more about what we mean by "Newmar Quality: A Way Of Life." At *newmarcorp.com*, you'll find the latest updates on individual model specifications, floorplans, special packages and more. You'll also find a wealth of resources to become more familiar with our heritage, our history and our innovations.



KSF—33KSF/Heathered Plum





PRIDE AND TRADITION

Maybe it's in the way Newmar employees take pride in their work and assume personal responsibility for each task they perform. Maybe it's because these talented individuals build each Newmar, from the American Star Travel Trailer up to the London Aire Coach, on the same assembly line. Maybe it's because Newmar's leadership believes real quality is not found on a chart but in a way of life.

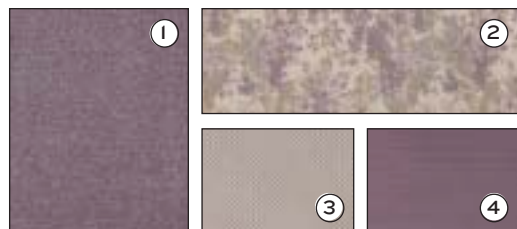
There are several things that make a Newmar special. Just like individuals, the qualities we value most are the inner ones. We build our products to reflect this way of thinking. We believe outer beauty is only worthwhile if it reflects inner quality. We back this quality with a three-year/36,000-mile, bumper-to-bumper limited warranty, the Newmar Freedom Warranty. It's a commitment not only to our products, but also to our Newmar owners. And as with many other industry-changing innovations, Newmar was the first to offer this level of coverage, leaving the rest to follow suit. It's all about freedom — comprehensive coverage and the peace of mind that goes along with it. This is the essence of Newmar.



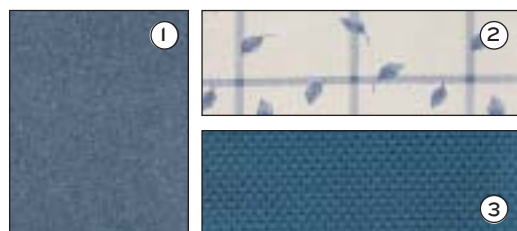
Décor

Personal Details

Kountry Star



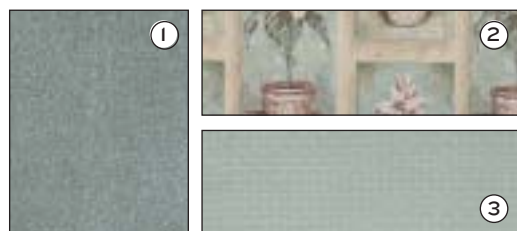
KS3-479/Heathered Plum



KS3-480/Riviera Blue



KS3-481/Bamboo Tan



KS3-482/Jasmine Green



Heather Tan



Riviera Green

EXTERIOR FINISH

We pay close attention to details like surface preparation and facility cleanliness for maximum results. Our finishing technicians are skilled and experienced. The result is your Newmar receives an uncommonly uniform finish that is as durable as it is beautiful.

DÉCOR

① carpet ② sofa ③ accent 1 ④ accent 2

With the range of fabrics, colors and textures available in Newmar's designs, you have a broad palette of self-expression. These elements work in harmony to create a unique experience that captivates and inspires. Newmar interiors are designed to delight your senses of sight and touch, and allow you to choose an interior as individual as you are.



newmarcorp.com

STOP BY FOR A VISIT

BRINGING UP-TO-THE-MINUTE INFORMATION TO YOU AT THE SPEED OF LIFE. YOU'LL FIND:

- Floorplans/Specifications
- New Interior/Exterior Colors
- Standard/Optional Equipment
- Newmar Photo Gallery
- Kountry Klub Information
- Factory Tour Experience



KONNECT

With so many impassioned Newmar owners out there, sharing the Newmar experience is only natural. We created the Kountry Klub to:

- Create an environment for friendship, fun, adventure and recreation
- Provide a forum and activities for all Newmar product owners to socialize as a group
- Streamline relations and communication between Newmar and Newmar owners

There are many benefits for our members to enjoy including the Klub magazine, rallies, caravans and special RV show events. Call 877-639-5582, or go to the Klub section of newmarcorp.com for details on our events calendar, Klub merchandise, Klub news and more!

EXPERIENCE THE NEWMAR FACTORY TOUR

If experience is a good teacher, let the Newmar Factory Tour experience teach you much. Feel the smooth contours of hand-finished countertops before they are set. Smell freshly sanded woods as cabinets are assembled. Take in the energy of motivated employees as they build each individual Newmar, on the same assembly line, with equal care and attention to detail. Consider yourself invited. Call 574-773-7791 for reservations and more information.



NEWMAR QUALITY: A WAY OF LIFE

NEWMAR CORPORATION
355 N DELAWARE ST
PO BOX 30
NAPPANEE IN 46550-0030
574-773-7791 Fax 574-773-2895
www.newmarcorp.com

Newmar 2003

www.newmarcorp.com

Official Newmar Dealer:

Some features shown in our literature are optional. Colors and finishes are photographic representations and may appear differently when viewing actual materials. Prices, specifications and floorplans are subject to change at Newmar's discretion without prior written notice or obligation. Please see your dealer for actual samples and specifications. ©2002 Newmar Corporation. Printed in the U.S.A. (6/02)

2003 Kountry Star Fifth Wheel

Newmar Corporation 2003 Kountry Star Fifth Wheel Specifications & Floorplans



2003 KOUNTRY STAR FIFTH WHEEL

STANDARD FEATURES

AIR CONDITIONING & HEATING

- Two - 30# LP Gas Bottles with Automatic Regulator
- 13,500 BTU Brisk Central Air Conditioner
- LP Leak Detector

APPLIANCES & ACCESSORIES

- Six Gallon Gas/Electric Water Heater with Direct Spark Ignition
- 22" Microwave
- Three Burner Range with Glass Oven Door & Piezzo Ignition
- AM/FM Radio with Cassette, CD Player
- Range Hood with Light and Fan
- Dometic® 2852 Refrigerator (8 Cubic Foot)
- Telephone Connection with One Phone Jack
- TV Antenna with Power Booster, One Exterior Jack, and Two Interior Jacks
- Color TV in Entertainment Center
- Cable TV Connection with RG 6 Coax

CABINETS & FURNITURE

- Oak Hardwood Raised Panel Doors on Overhead Cabinets
- Flexsteel® Sofa
- Flexsteel® Recliner
- Lifts on Bed to Access Storage Area
- Queen Bed - 60" X 75"
- Corian® Countertop in Kitchen with Color Coordinated Edge and Acrylic Sink
- Dinette Table with Four Chairs
- Laminate Countertop in Bathroom with Porcelain Lavatory

ELECTRICAL FEATURES

- 55 Amp Converter
- 12 Volt Battery
- 30 Amp Electrical Service

EXTERIOR FEATURES

- Filton Fiberglass Exterior Sides
- Gel-Coated Fiberglass End Caps
- Seamless Aluminum Roof
- Power Front Jacks
- Rear Skid Bars
- One Pair of Stabilizer Jacks

INTERIOR FEATURES

- Day/Night Pleated Window Shades with Lined Drapes & Valances
- Quilted Bedspread with Reverse Sham and Accent Pillow
- Carpeting in Living Room and Bedroom Areas
- Vinyl Floor in Kitchen, Foyer, and Bathroom Areas
- Hardwood Fascia/Fabric Fascia on Living Area Slide Out

PLUMBING & BATH FEATURES

- Monitor Panel
- Thetford Aqua Magic IV Stool
- Tub/Shower Surround with Shower Door
- Water Heater Bypass System
- Demand Water System with Shurflo Pump

CONSTRUCTION FEATURES

- Aluminum Frame Sidewalls and Roof Construction, 16" On Center
- Roof R-Value Rating: 12
- Sidewall R-Value Rating: 11
- Floor R-Value Rating: 11

WINDOWS, AWNINGS, & VENTS

- Power Vent in Bathroom with Wall Switch
- Radius Entrance Door with Deadbolt

OPTIONAL FEATURES

AIR CONDITIONING & HEATING

- 15,000 BTU Brisk Air Conditioner In Lieu of Standard (5 lbs.)

APPLIANCES & ACCESSORIES

- Sears® Washer/Dryer with 50 Amp Electrical Service (241 lbs.)
- Dometic® 3862 Refrigerator (8 Cubic Foot, 5 lbs.)
- Ten Gallon Gas/Electric Water Heater with Direct Spark Ignition (10 lbs.)

CABINETS & FURNITURE

- Maple Cream Cabinets
- Arnold Cherry Cabinets

EXTERIOR FEATURES

- BriteTek® Roof with 7mm Decking
- Gel-Coated Fiberglass Exterior Sides
- Extra Stabilizers Jacks, One Pair (40 lbs.)

INTERIOR FEATURES

- Simulated Plank Floor in Kitchen & Foyer Areas (30 lbs.)
- 12" Marble Look Floor Tile in Kitchen and Master Bathroom Areas (20 lbs.)
- Lambrequin Window Treatment (20 lbs.)

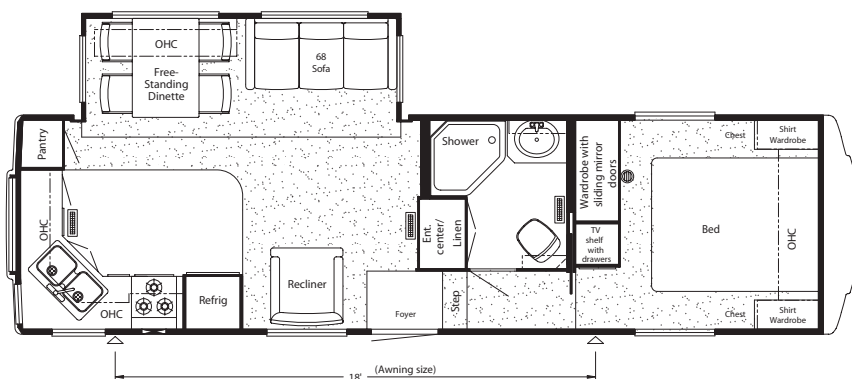
WINDOWS, AWNINGS, & VENTS

- Fan-Tastic® Vent with Rain Sensor in Kitchen Area (11 lbs.)
- Double Pane, Tinted Safety Glass Windows (110 lbs.)
- Skylight in Master Bathroom, Located Above Tub/Shower (2 lbs.)

TOWABLE CHASSIS FEATURES

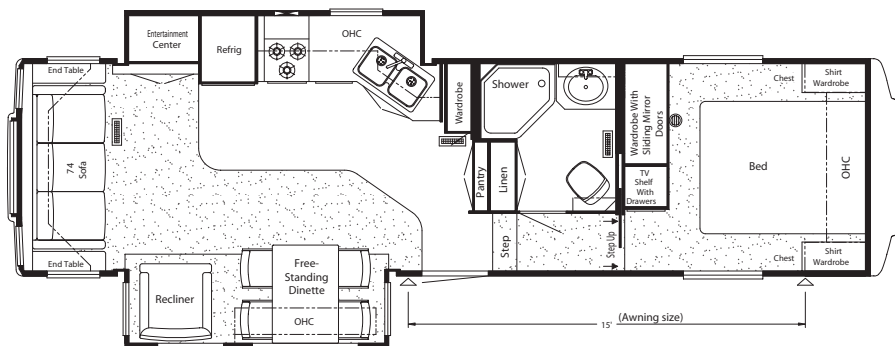
- Easy Lube Equalizers (1 lb.)
- Shock Absorbers (2 lbs.)
- Spare Tire Mounted in Underbelly Lift Kit

NEWMAR SPECIFICATIONS: 2003 KOUNTRY STAR FIFTH WHEEL



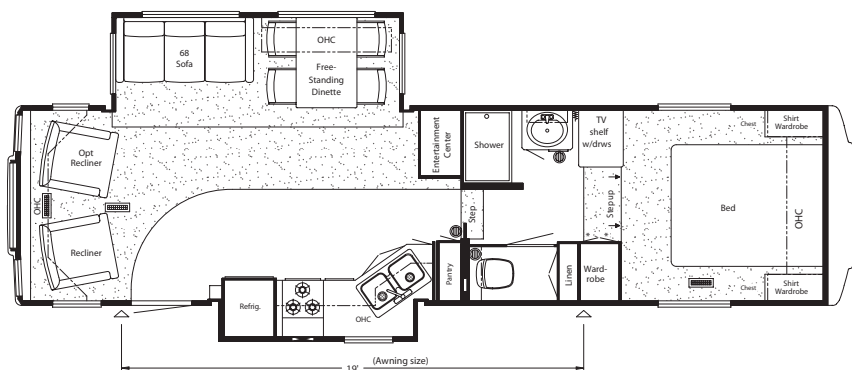
2003 Kountry Star 30' RKCL-FW

Model	KSFW 30RKCL
TIRE SIZE	225/75R15-D
GAWR	5,080
GVWR	11,900
APP. LENGTH	31' 1"
APP. HEIGHT	12'
WIDTH	100"
APP. DRY WEIGHT	9,586
APP. HITCH WEIGHT	1,821
FRESH WATER	75
GREY	82
SEWAGE CAP.	40
APP. HITCH HEIGHT	46"
HEAT CAP.	35,000



2003 Kountry Star 32' RLKS-FW

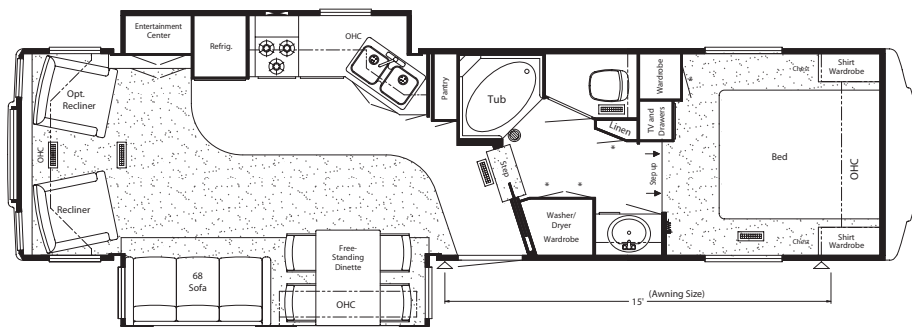
Model	KSFW 32RLKS
TIRE SIZE	235/85R16-E
GAWR	6,000
GVWR	14,000
APP. LENGTH	33'
APP. HEIGHT	12' 1"
WIDTH	100"
APP. DRY WEIGHT	10,670
APP. HITCH WEIGHT	2,027
FRESH WATER	75
GREY	82
SEWAGE CAP.	40
APP. HITCH HEIGHT	47"
HEAT CAP.	35,000



2003 Kountry Star 33' KSBL-FW

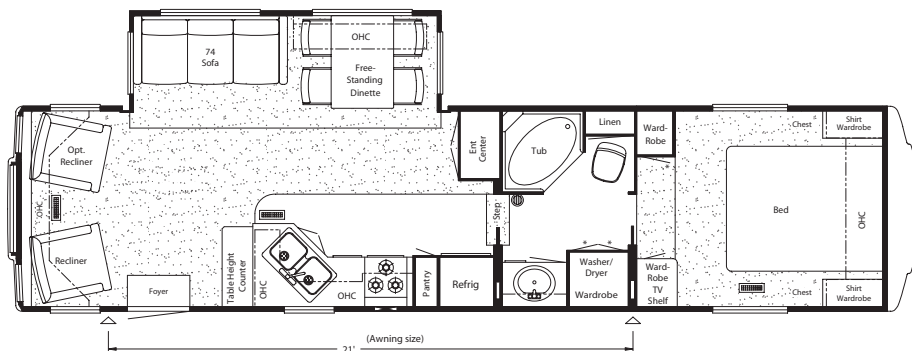
Model	KSFW 33KSBL
TIRE SIZE	235/85R16-E
GAWR	6,000
GVWR	14,000
APP. LENGTH	34' 2"
APP. HEIGHT	12' 1"
WIDTH	100"
APP. DRY WEIGHT	10,800
APP. HITCH WEIGHT	1,890
FRESH WATER	75
GREY	82
SEWAGE CAP.	40
APP. HITCH HEIGHT	47"
HEAT CAP.	35,000

NEWMAR SPECIFICATIONS: 2003 KOUNTRY STAR FIFTH WHEEL



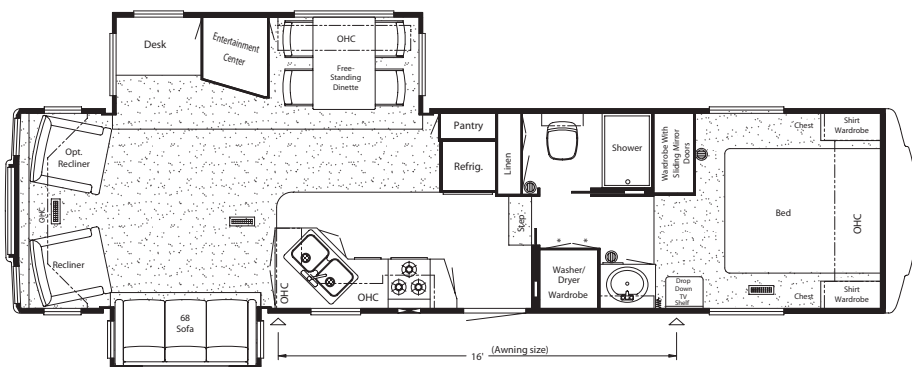
2003 Kountry Star 33' KSFB-FW

Model	KSFW 33KSFB
TIRE SIZE	235/85R16-E
GAWR	6,000
GVWR	14,000
APP. LENGTH	34' 6"
APP. HEIGHT	12' 1"
WIDTH	100"
APP. DRY WEIGHT	10,928
APP. HITCH WEIGHT	1,967
FRESH WATER	75
GREY	82
SEWAGE CAP.	40
APP. HITCH HEIGHT	47"
HEAT CAP.	35,000



2003 Kountry Star 34' RLCK-FW

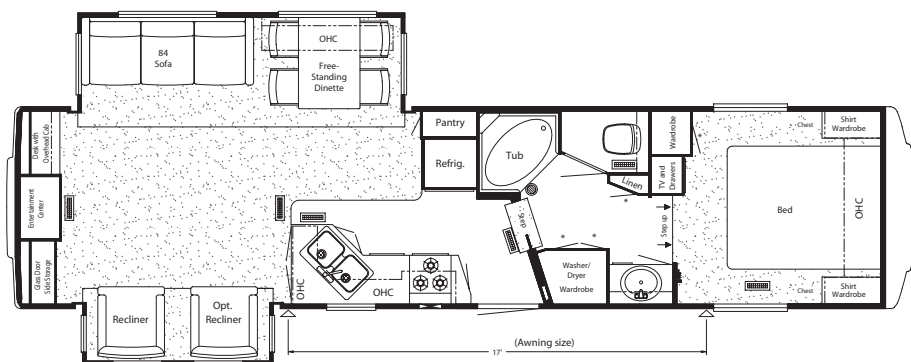
Model	KSFW 34RLCK
TIRE SIZE	235/85R16-E
GAWR	6,000
GVWR	14,000
APP. LENGTH	35' 8"
APP. HEIGHT	12' 1"
WIDTH	100"
APP. DRY WEIGHT	10,441
APP. HITCH WEIGHT	1,666
FRESH WATER	75
GREY	82
SEWAGE CAP.	40
APP. HITCH HEIGHT	47"
HEAT CAP.	35,000



2003 Kountry Star 34' RLWB-FW

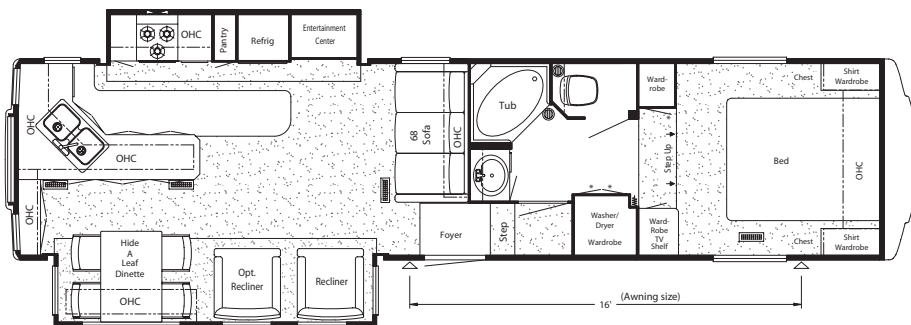
Model	KSFW 34RLWB
TIRE SIZE	235/85R16-E
GAWR	6,000
GVWR	14,000
APP. LENGTH	35' 9"
APP. HEIGHT	12' 1"
WIDTH	100"
APP. DRY WEIGHT	11,188
APP. HITCH WEIGHT	1,790
FRESH WATER	75
GREY	82
SEWAGE CAP.	40
APP. HITCH HEIGHT	47"
HEAT CAP.	42,000

NEWMAR SPECIFICATIONS: 2003 KOUNTRY STAR FIFTH WHEEL



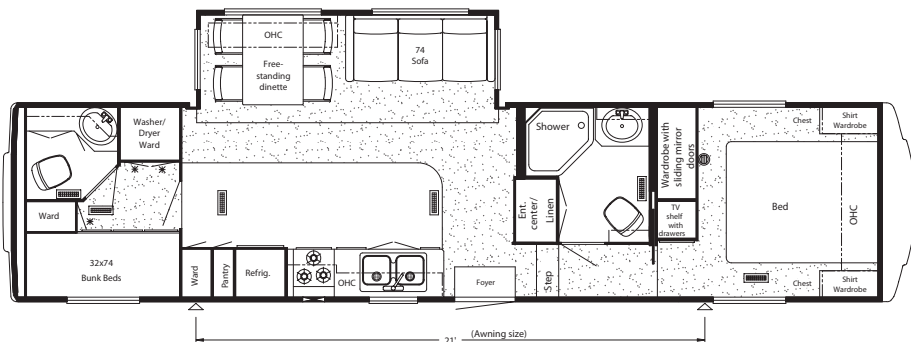
2003 Kountry Star 35' DSSK-FW

Model	KSFW 35DSSK
TIRE SIZE	235/85R16-E
GAWR	6,000
GVWR	14,000
APP. LENGTH	36' 2"
APP. HEIGHT	12' 1"
WIDTH	100"
APP. DRY WEIGHT	11,214
APP. HITCH WEIGHT	1,906
FRESH WATER	75
GREY	82
SEWAGE CAP.	40
APP. HITCH HEIGHT	47"
HEAT CAP.	55,000



2003 Kountry Star 35' LKSA-FW

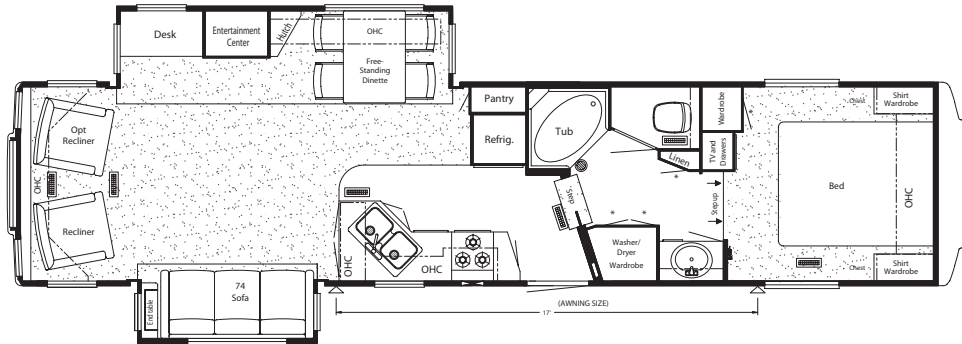
Model	KSFW 35LKSA
TIRE SIZE	235/85R16-E
GAWR	6,000
GVWR	14,000
APP. LENGTH	36' 4"
APP. HEIGHT	12' 1"
WIDTH	100"
APP. DRY WEIGHT	11,448
APP. HITCH WEIGHT	1,832
FRESH WATER	75
GREY	82
SEWAGE CAP.	40
APP. HITCH HEIGHT	47"
HEAT CAP.	42,000



2003 Kountry Star 36' DBSA-FW

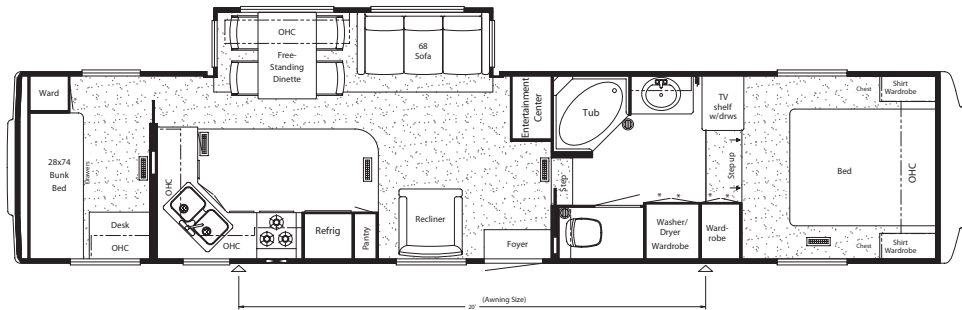
Model	KSFW 36DBSA
TIRE SIZE	235/85R16-E
GAWR	6,000
GVWR	14,000
APP. LENGTH	36' 9"
APP. HEIGHT	12' 1"
WIDTH	100"
APP. DRY WEIGHT	10,831
APP. HITCH WEIGHT	2,058
FRESH WATER	75
GREY	82
SEWAGE CAP.	80
APP. HITCH HEIGHT	47"
HEAT CAP.	35,000

NEWMAR SPECIFICATIONS: 2003 KOUNTRY STAR FIFTH WHEEL



2003 Kountry Star 37' RLFb-FW

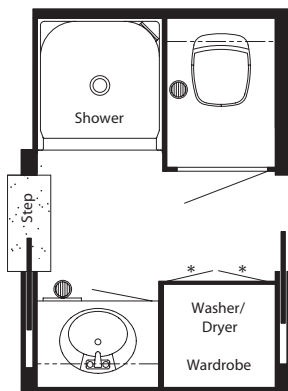
Model	KSFw 37RLFb
TIRE SIZE	235/85R16-G
GAWR	7,000
GVWR	16,250
APP. LENGTH	38'
APP. HEIGHT	12' 2"
WIDTH	100"
APP. DRY WEIGHT	11,685
APP. HITCH WEIGHT	1,870
FRESH WATER	75
GREY	82
SEWAGE CAP.	40
APP. HITCH HEIGHT	48"
HEAT CAP.	55,000



2003 Kountry Star 39' CKDA-FW

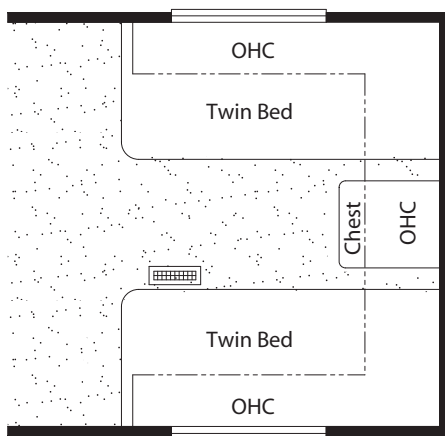
Model	KSFw 39CKDA
TIRE SIZE	235/85R16-G
GAWR	7,000
GVWR	16,250
APP. LENGTH	40' 5"
APP. HEIGHT	12' 2"
WIDTH	100"
APP. DRY WEIGHT	11,488
APP. HITCH WEIGHT	2,183
FRESH WATER	75
GREY	82
SEWAGE CAP.	40
APP. HITCH HEIGHT	48"
HEAT CAP.	55,000

FLOORPLAN OPTIONS: 2003 KOUNTRY STAR FIFTH WHEEL

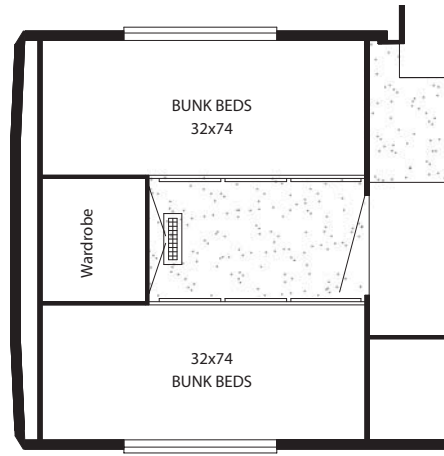


Option P182	Enclosed Stool Room with Straight Shower
	KSFw: 34RLCK

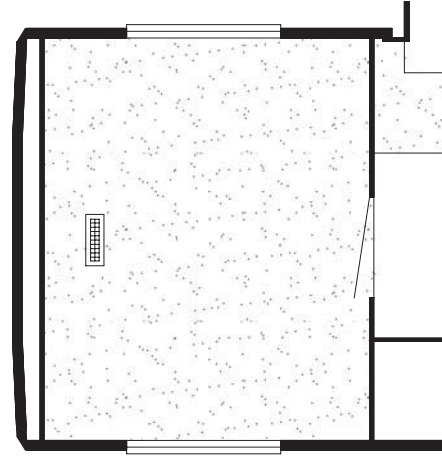
FLOORPLAN OPTIONS: 2003 KOUNTRY STAR FIFTH WHEEL



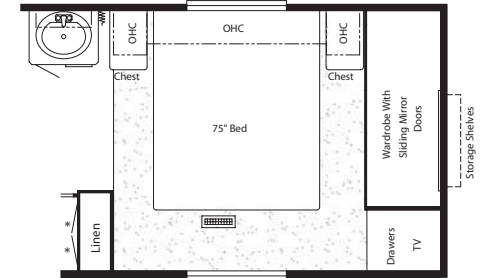
Option K080	Twin Bed
	KSFW: 30RKCL, 32RLKS, 33KSBL, 33KSFB, 34RLCK, 34RLWB, 35DSSK, 35LKSA, 36DBSA, 37RLFB, 39CKDA



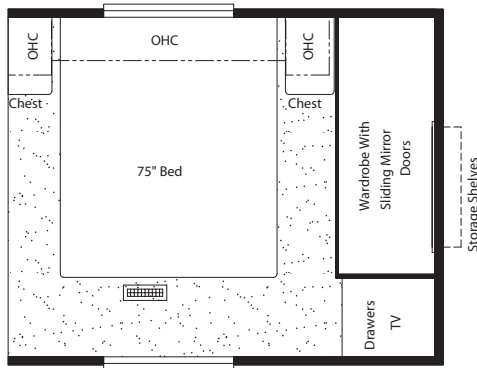
Option K130	Bunkhouse Bedroom
	KSFW: 36DBSA



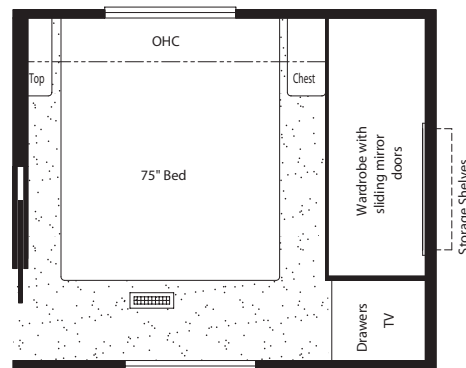
Option K550	Delete Rear Bedroom and Bath
	KSFW: 36DBSA



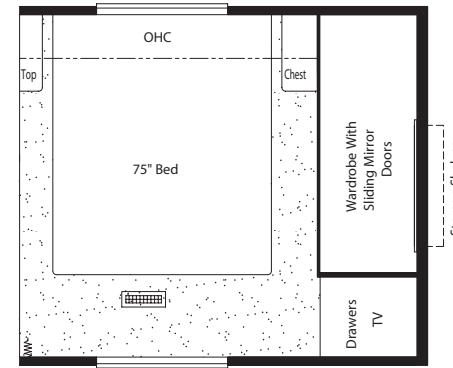
Option K870	Honeymoon Suite
	KSFW: 33KSBL



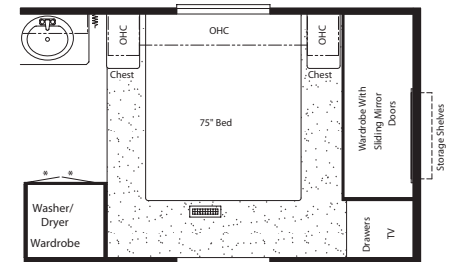
Option K920	Honeymoon Suite
	KSFW: 34RLCK, 35LKSA



Option K921	Honeymoon Suite
	KSFW: 30RKCL, 32RLKS, 36DBSA

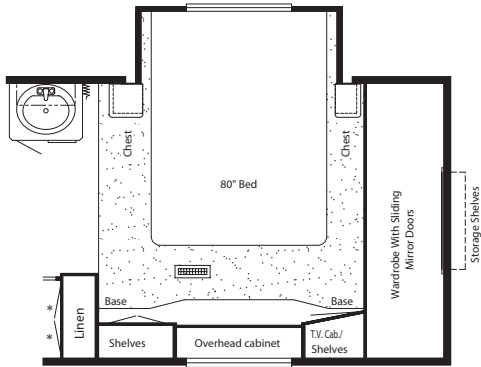


Option K923	Honeymoon Suite
	KSFW: 34RLWB

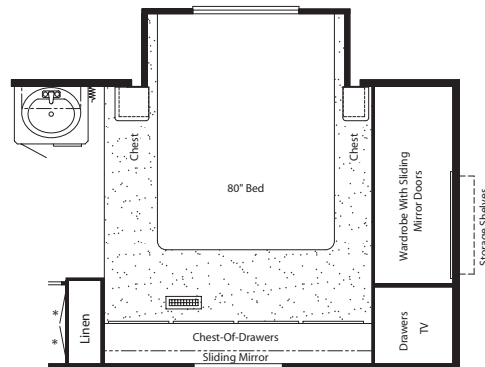


Option K926	Honeymoon Suite
	KSFW: 39CKDA

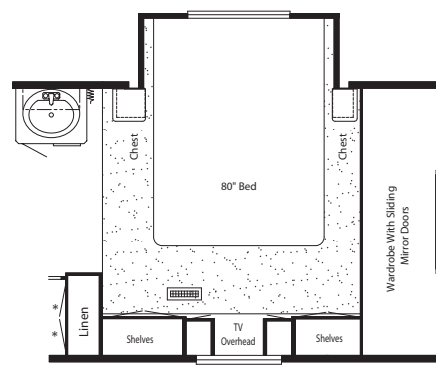
FLOORPLAN OPTIONS: 2003 KOUNTRY STAR FIFTH WHEEL



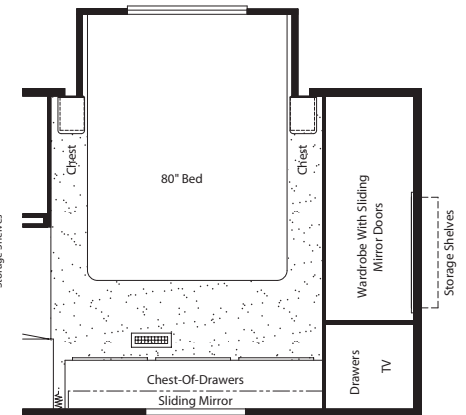
Option M090 Cabover Slide Out with Vanity Ctr.
KSFw: 33KSBL



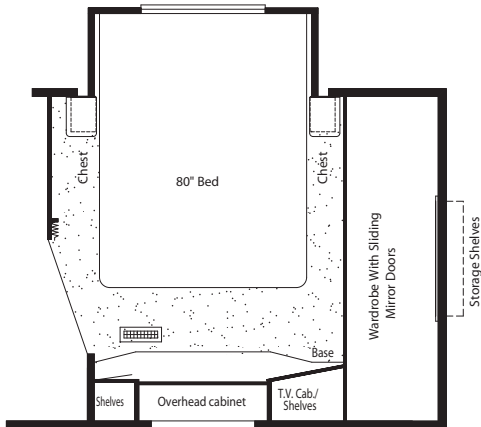
Option M110 Cabover Slide Out with Dresser Ctr.
KSFw: 33KSBL



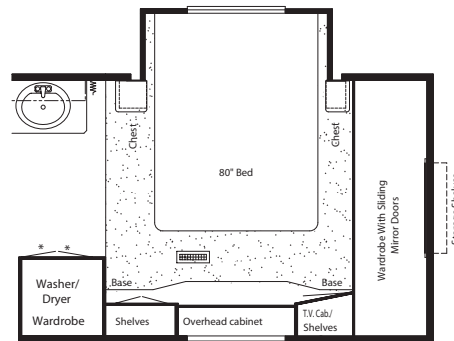
Option M120 Cabover Slide Out with Vanity/Dresser Ctr.
KSFw: 33KSBL



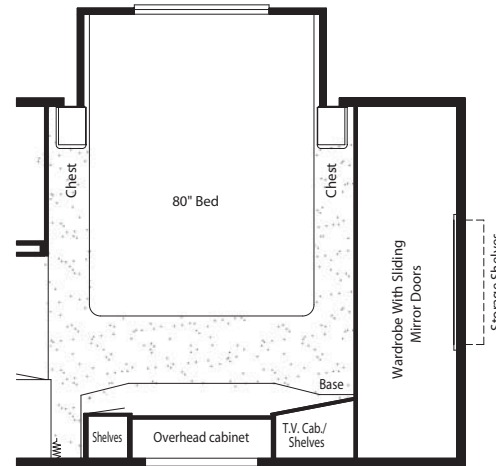
Option M300 Cabover Slide Out with Dresser Ctr.
KSFw: 34RLWB



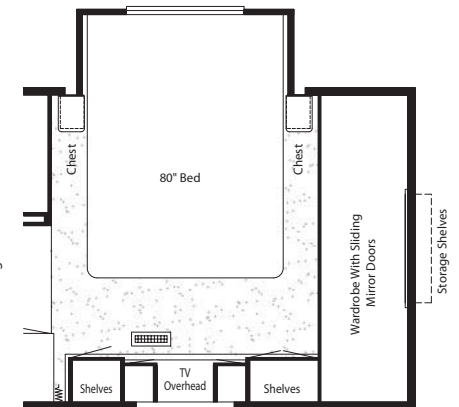
Option M302 Cabover Slide Out with Vanity Ctr.
KSFw: 33KSFB, 35DSSK



Option M303 Cabover Slide Out with Vanity Ctr.
KSFw: 39CKDA

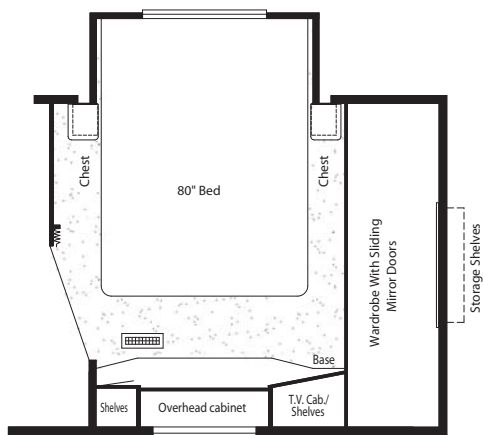


Option M304 Cabover Slide Out with Vanity Ctr.
KSFw: 34RLWB

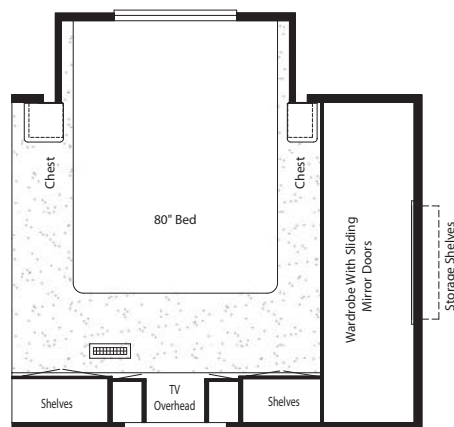


Option M305 Cabover Slide Out with Vanity/Dresser Ctr.
KSFw: 34RLWB

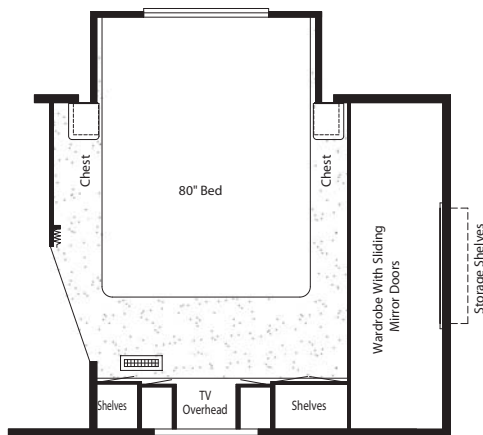
FLOORPLAN OPTIONS: 2003 KOUNTRY STAR FIFTH WHEEL



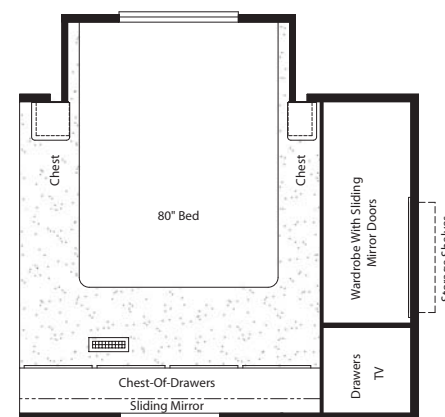
Option M640	Cabover Slide Out with Vanity Ctr.
	KSFW: 37RLFB



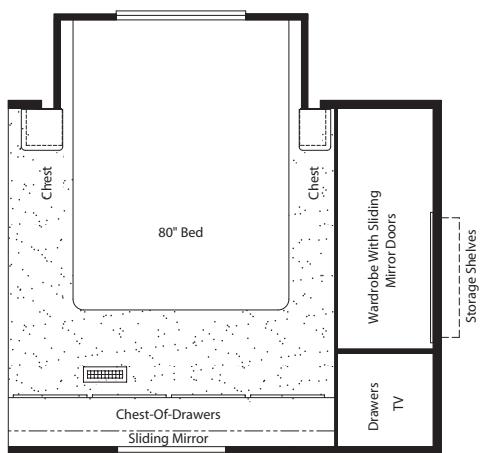
Option M650	Cabover Slide Out with Vanity/Dresser Ctr.
	KSFW: 35LKSA



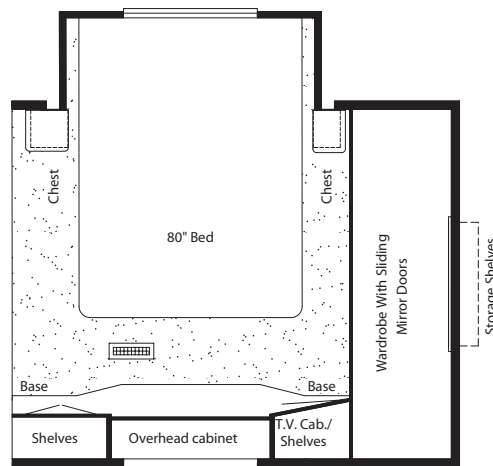
Option M660	Cabover Slide Out with Vanity Over Dresser Ctr.
	KSFW: 37RLFB



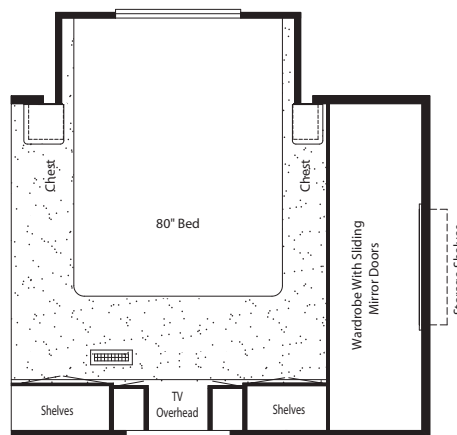
Option M700	Cabover Slide Out with Dresser Ctr.
	KSFW: 35LKSA



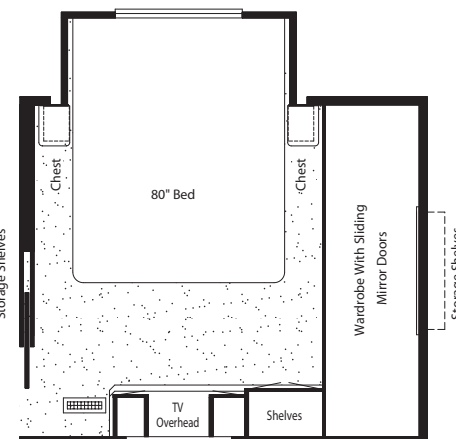
Option M711	Cabover Slide Out with Dresser Ctr.
	KSFW: 34RLCK



Option M712	Cabover Slide Out with Vanity Ctr.
	KSFW: 34RLCK

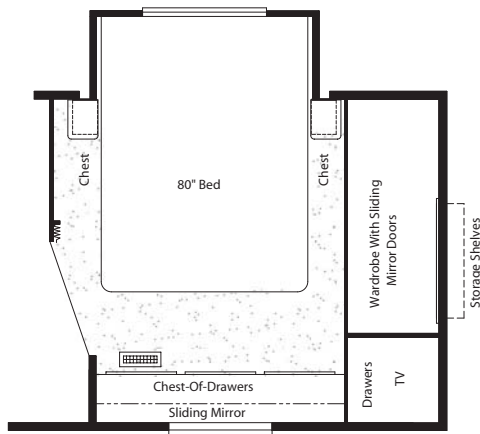


Option M713	Cabover Slide Out with Vanity Over Dresser Ctr.
	KSFW: 34RLCK

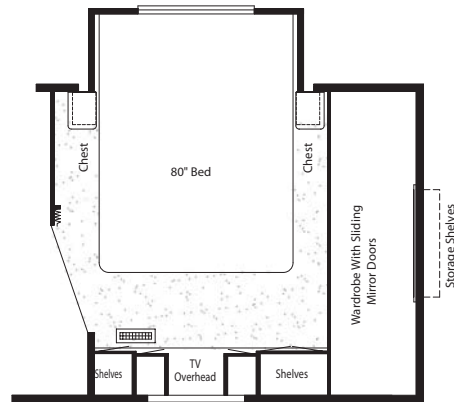


Option M714	Cabover Slide Out with Vanity Over Dresser Ctr.
	KSFW: 36DBSA

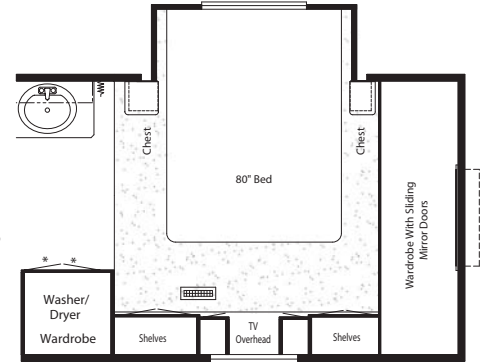
FLOORPLAN OPTIONS: 2003 KOUNTRY STAR FIFTH WHEEL



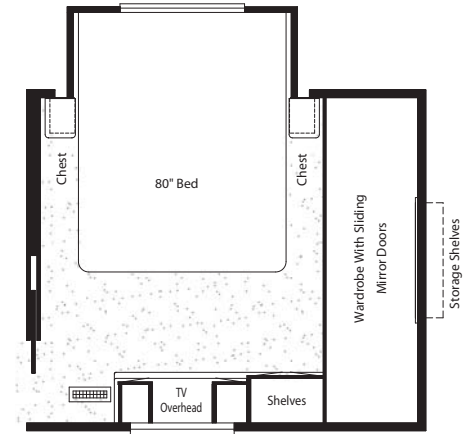
Option M721 Cabover Slide Out with Dresser Ctr.
KSFw: 33KSFB, 35DSSK



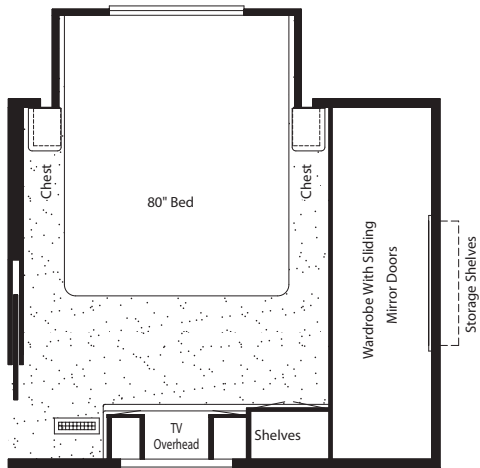
Option M722 Cabover Slide Out with Vanity/Dresser Ctr.
KSFw: 33KSFB, 35DSSK



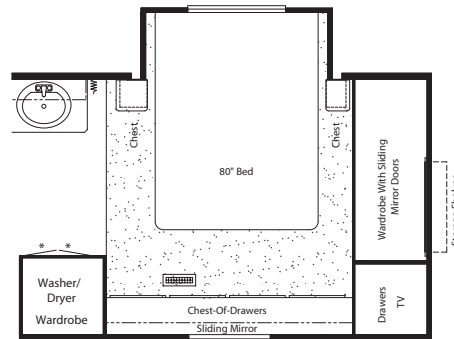
Option M723 Cabover Slide Out with Vanity/Dresser Ctr.
KSFw: 39CKDA



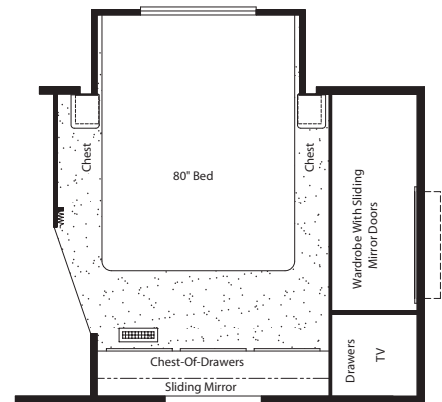
Option M724 Cabover Slide Out with Vanity/Dresser Ctr.
KSFw: 32RLKS



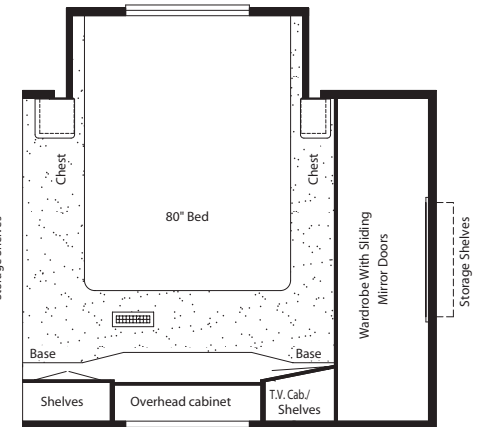
Option M725 Cabover Slide Out with Vanity/Dresser Ctr.
KSFw: 30RKCL



Option M730 Cabover Slide Out with Dresser Ctr.
KSFw: 39CKDA



Option M770 Cabover Slide Out with Dresser Ctr.
KSFw: 37RLFB



Option M780 Cabover Slide Out with Vanity Ctr.
KSFw: 35LKSA

Notes

This image shows a single sheet of white paper with horizontal ruling lines. The lines are evenly spaced and run across the width of the page. There are no margins, text, or other markings on the paper.

3-36

Newmar Freedom Warranty™

The Newmar Freedom Warranty simply and clearly details the most impressive coverage in the industry. Three years or 36,000 miles, whichever comes first. Bumper to bumper. It's a symbol of our uncompromising pursuit of quality.

Newmar takes great pride in ensuring our owners have made the right choice. It's yet another way of reinforcing Newmar's commitment to the customer, and a challenge to the rest of the industry to raise its standards for the benefit of all RV owners.

Newmar has made this kind of protection possible, not only by building quality products, but also by demanding the same level of quality from our component manufacturers. When Newmar required them to match this 36-month pledge, everyone stepped up as expected. Now, Newmar is pleased to include these companies in our warranty - making the Newmar warranty truly complete.

The Newmar Freedom Warranty covers all components, except tires, battery and chassis (which is warranted for at least 36 months by its manufacturer).



Newmar Quality: A Way of Life.

355 N DELAWARE ST

PO BOX 30

NAPPANEE IN 46550-0030

574.773.7791 • FAX: 574.773.2895

www.newmarcorp.com

We invite you to visit our state-of-the-art production facility in Nappanee, Indiana. Plant tours are offered at 10 a.m. and 1 p.m. Monday through Friday.

Don't forget to check out the Newmar Kountry Klub. All you need for eligibility is to be a proud owner of any of the fine Newmar recreational vehicles.

Some features shown in our literature are optional. Colors and finishes are photographic representations and may appear differently when viewing actual materials. Prices, specifications, and floorplans are subject to change at Newmar's discretion without prior written notice or obligation. Please see your dealer for actual samples and specifications.

©2002 Newmar Corporation. Printed in the U.S.A. (2/7/03)