



2003 Newmar Mountain Aire  
FIFTH WHEEL



2003 Newmar Mountain Aire  
FIFTH WHEEL



MOUNTAIN AIRE FIFTH WHEEL





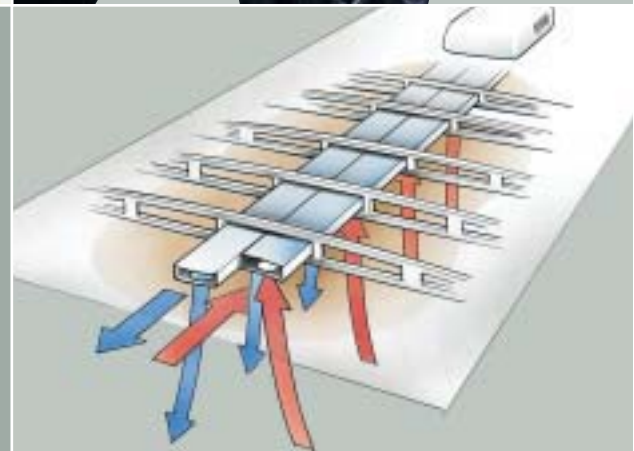
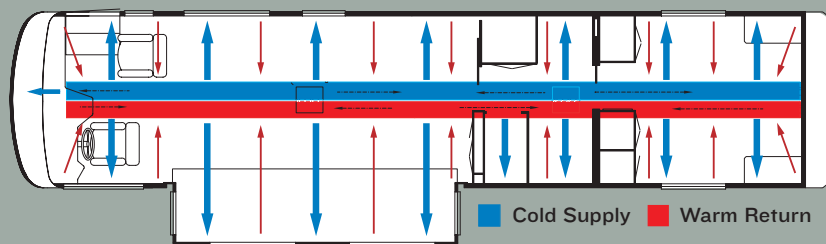
## *Mountain Aire Fifth Wheel* **RECREATE**

Think about it. It's your time. Time to re-think, re-learn and re-invent yourself. The Mountain Aire Fifth Wheel can provide plenty of inspiration. It's an exceptional coach offering a unique level of flexibility and user-friendliness to accommodate your life and renew your freedom. The exterior, with its contoured, molded end caps and smooth exterior side skin, creates a sleek, unified outer persona. Optional full-paint graphics in two new color schemes complete the look and give this coach an outer attractiveness to match its inner quality. The Mountain Aire Fifth Wheel — Newmar innovation and inspiration at its finest, coming together and creating something special.



### **NEWMAR'S TRUE CENTRAL AIR SYSTEM —**

Newmar's True Central Air utilizes not only full ducting for incoming cool air but also a separate fully ducted system to quickly and effectively remove warm air from every living area. True Central Air is standard on every Newmar.





MAFW—37BLDS / Grand Fern



MAFW—35LKSA / Royal Blue



MAFW—37BLDS / Grand Fern



## *Mountain Aire Fifth Wheel* **REFRESH**

Close the door and be refreshed — in quiet solitude or with the company of friends and family — in your Mountain Aire Fifth Wheel. Bask in one of five new décor choices and create the mood you desire. Newmar designs provide a canvas from which to individualize to your tastes. Delight your senses with a stunning home theater by Sony® and discover the numerous other refinements to the interior — cabinetry, mirrors, bedspread and countertops. No doubt about it, stepping into the Mountain Aire Fifth Wheel is always a refreshing experience.



**newmarcorp.com**  
STOP BY FOR A VISIT

Like what you see? Maybe you want to learn more about who we are — to discover more about what we mean by “Newmar Quality: A Way Of Life.” At *newmarcorp.com*, you’ll find the latest updates on individual model specifications, floorplans, special packages and more. You’ll also find a wealth of resources to become more familiar with our heritage, our history and our innovations.



MAFW—37BLDS / Grand Fern









## PRIDE AND TRADITION

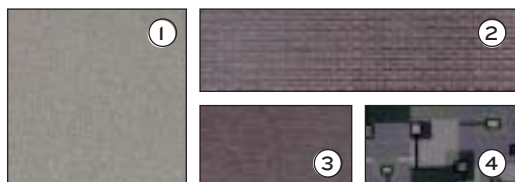
Maybe it's in the way Newmar employees take pride in their work and assume personal responsibility for each task they perform. Maybe it's because these talented individuals build each Newmar, from the American Star Travel Trailer up to the London Aire Coach, on the same assembly line. Maybe it's because Newmar's leadership believes real quality is not found on a chart but in a way of life.

There are several things that make a Newmar special. Just like individuals, the qualities we value most are the inner ones. We build our products to reflect this way of thinking. We believe outer beauty is only worthwhile if it reflects inner quality. We back this quality with a three-year/36,000-mile, bumper-to-bumper limited warranty, the Newmar Freedom Warranty. It's a commitment not only to our products, but also to our Newmar owners. And as with many other industry-changing innovations, Newmar was the first to offer this level of coverage, leaving the rest to follow suit. It's all about freedom — comprehensive coverage and the peace of mind that goes along with it. This is the essence of Newmar.

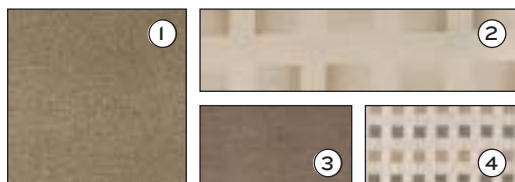


## Décor

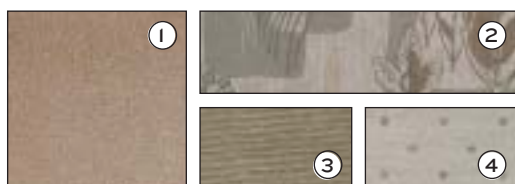
# Mountain Aire Personal Details



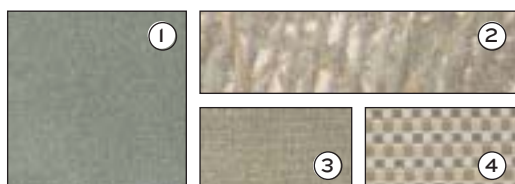
MA3—489/Iris Dusk



MA3—488/Bisque



MA3—490/Italian Straw



MA3—487/Grand Fern



MA3—491/Royal Blue



Iris Dusk

Bisque



Pebble Beige

Grand Fern

Crescent Silver

## EXTERIOR FINISH

We pay close attention to details like surface preparation and facility cleanliness for maximum results, no matter if the job calls for a full custom paint scheme or one from our assortment of offerings. Our finishing technicians are skilled and experienced. The result is your Newmar receives an uncommonly uniform finish that is as durable as it is beautiful.

## DÉCOR

① carpet ② sofa ③ accent 1 ④ accent 2

With the range of fabrics, colors and textures available in Newmar's designs, you have a broad palette of self-expression. These elements work in harmony to create a unique experience that captivates and inspires. Newmar interiors are designed to delight your senses of sight and touch, and allow you to choose an interior as individual as you are.



## BRINGING UP-TO-THE-MINUTE INFORMATION TO YOU AT THE SPEED OF LIFE. YOU'LL FIND:

- Floorplans/Specifications
- New Interior/Exterior Colors
- Standard/Optional Equipment
- Newmar Photo Gallery
- Kountry Klub Information
- Factory Tour Experience





# KONNECT

With so many impassioned Newmar owners out there, sharing the Newmar experience is only natural. We created the Kountry Klub to:

- Create an environment for friendship, fun, adventure and recreation
- Provide a forum and activities for all Newmar product owners to socialize as a group
- Streamline relations and communication between Newmar and Newmar owners

There are many benefits for our members to enjoy including the Klub magazine, rallies, caravans and special RV show events. Call 877-639-5582, or go to the Klub section of [newmarcorp.com](http://newmarcorp.com) for details on our events calendar, Klub merchandise, Klub news and more!

## EXPERIENCE THE NEWMAR FACTORY TOUR

If experience is a good teacher, let the Newmar Factory Tour experience teach you much. Feel the smooth contours of hand-finished countertops before they are set. Smell freshly sanded woods as cabinets are assembled. Take in the energy of motivated employees as they build each individual Newmar, on the same assembly line, with equal care and attention to detail. Consider yourself invited. Call 574-773-7791 for reservations and more information.



NEWMAR QUALITY: A WAY OF LIFE

NEWMAR CORPORATION  
355 N DELAWARE ST  
PO BOX 30  
NAPPANEE IN 46550-0030  
574-773-7791 Fax 574-773-2895  
[www.newmarcorp.com](http://www.newmarcorp.com)

## Newmar 2003

[www.newmarcorp.com](http://www.newmarcorp.com)

*Official Newmar Dealer:*

Some features shown in our literature are optional. Colors and finishes are photographic representations and may appear differently when viewing actual materials. Prices, specifications and floorplans are subject to change at Newmar's discretion without prior written notice or obligation. Please see your dealer for actual samples and specifications. ©2002 Newmar Corporation. Printed in the U.S.A. (6/02)



# 2003 Mountain Aire Fifth Wheel

## Newmar Corporation 2003 Mountain Aire Fifth Wheel Specifications & Floorplans



# 2003 MOUNTAIN AIRE FIFTH WHEEL

## STANDARD FEATURES

### AIR CONDITIONING & HEATING

- Two - 30# LP Gas Bottles with Automatic Regulator
- 13,500 BTU Brisk Central Air Conditioner
- LP Leak Detector

### APPLIANCES & ACCESSORIES

- Ten Gallon Gas/Electric Water Heater with Direct Spark Ignition
- 22" Spacesaver Microwave
- Three Burner Recessed Range with Glass Oven Door and Electronic Ignition
- AM/FM Radio with Cassette, CD Player
- Dometic® 3862 Refrigerator (8 Cubic Foot)
- Telephone Connection with One Phone Jack
- TV Antenna with Power Booster, One Exterior Jack, and Two Interior Jacks
- Flatscreen Color TV in Living Area
- Cable TV Connection with RG 6 Coax
- Range Cover of Matching Countertop Material
- Satellite Prep (Phone, TV Jack, and Recept)
- Washer/Dryer Prep
- Ceiling Fan in Living Area

### CABINETS & FURNITURE

- Oak Hardwood Raised Panel Cabinet Doors
- Flexsteel® Sofa
- Flexsteel® Recliner(s)
- Lifts on Bed to Access Storage Area
- Queen Bed - 60" X 80"
- Corian® Countertop in Kitchen with Color Coordinated Edge and Acrylic Sink
- Dinette Table with Four Chairs
- Laminate Countertop in Bathroom with Porcelain Bowl
- Drawers with Metal Guides

### ELECTRICAL FEATURES

- 55 Amp Converter
- 12 Volt Battery
- 50 Amp Electrical Service with Flexible Cord
- Lights in Wardrobes

### EXTERIOR FEATURES

- Gel-coated Fiberglass Exterior Sides
- BriteTek® Roof with 7mm Decking
- Power Front Jacks
- Rear Skid Bars
- One Pair of Stabilizer Jacks
- Roof Rack and Ladder
- Snaps for Jacks

## INTERIOR FEATURES

- Day/Night Pleated Window Shades with Lined Drapes & Valances
- Vertical Blinds on Rear Bay Windows
- Quilted Bedspread with Reverse Sham, Matching Bed Skirt, and Accent Pillow
- Carpeting in Living Room and Bedroom Areas
- Vinyl Floor in Kitchen, Foyer, and Bathroom Areas
- Two Sink Covers
- Woven Soft Touch Ceiling

## PLUMBING & BATH FEATURES

- Monitor Panel
- Thetford Bravura Stool
- Fiberglass Tub/Shower with Glass Shower Door
- Water Heater Bypass System
- Demand Water System with Shurflo Pump
- Sewage Holding Tank Rinse
- Drop Down Sewage Hose Holder Tray

## CONSTRUCTION FEATURES

- Aluminum Frame Sidewalls and Roof Construction, 16" On Center
- Roof R-Value Rating: 24
- Sidewall R-Value Rating: 11
- Floor R-Value Rating: 26

## WINDOWS, AWNINGS, & VENTS

- Power Vent in Bathroom with Wall Switch
- Tinted Safety Glass Windows
- A&E® 9000 Side Awning

## TOWABLE CHASSIS FEATURES

- Easy Lube Equalizers
- Shock Absorbers
- Spare Tire, Located in Rear Pull Out Tray

## OPTIONAL FEATURES

### GRAPHICS & DECOR CHOICES

- Exterior Full Paint Graphics

### AIR CONDITIONING & HEATING

- Extra 13,500 BTU Brisk Air Conditioner (95 lbs.)
- 15,000 BTU Brisk Air Conditioner (5 lbs.)

### APPLIANCES & ACCESSORIES

- Two Piece Washer/Dryer (210 lbs.)
- Dometic® 1062 Refrigerator (10 Cubic Foot)
- Dometic® 1292 Side-By-Side Refrigerator (12 Cubic Foot)

- Norcold® Four Door Refrigerator, Floorplan Specific
- Dishwasher with Raised Panel Insert, Floorplan Specific (75 lbs.)
- 30" Convection Microwave with Three Burner Cooktop
- 13" Color TV in Bedroom

### CABINETS & FURNITURE

- Maple Cream Cabinets
- Arnold Cherry Cabinets
- Cherry Hardwood Cabinets (25 lbs.)
- Oak Hardwood Cabinets (25 lbs.)
- Pecan Maple Hardwood Cabinets (25 lbs.)
- Summer Maple Hardwood Cabinets (25 lbs.)

### EXTERIOR FEATURES

- Two 6 Volt Batteries (86 lbs.)
- Battery Disconnect Switch
- Generator Prep, Changeover, and Carbon Monoxide Detector
- 7.0 Onan® Generator with Automatic Changeover and Battery (345 lbs.)

### INTERIOR FEATURES

- Simulated Plank Floor in Kitchen and Foyer Areas (30 lbs.)
- 12" Marble Look Floor Tile in Kitchen and Master Bathroom Areas (20 lbs.)
- Ceramic Floor Tile in Kitchen, Foyer Area, and Bathroom Areas (75 lbs.)
- Lambrequin Window Treatment (20 lbs.)

### WINDOWS, AWNINGS, & VENTS

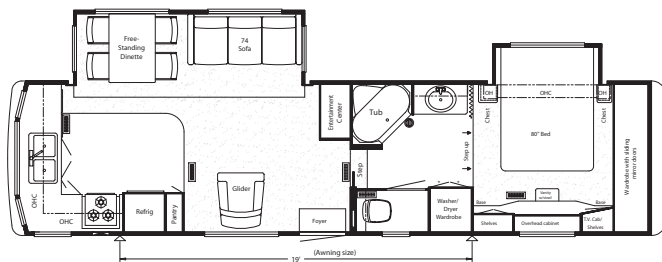
- Fan-Tastic® Vent with Rain Sensor in Kitchen Area (11 lbs.)
- Fan-Tastic® Vent in Bathroom, In Lieu of Standard Vent (11 lbs.)
- Double Pane, Tinted Safety Glass Windows (110 lbs.)
- Automatic Triple Entrance Door Steps (7 lbs.)
- Skylight in Master Bathroom, Located Above Tub/Shower (2 lbs.)

### TOWABLE CHASSIS FEATURES

- Dual Wheels, Disc Brakes, Mor/Ryde Independent Suspension
- Electric Over Hydraulic Disc Brakes
- Dual Wheels, Disc Brakes, Mor/Ryde Rubber Equalizers

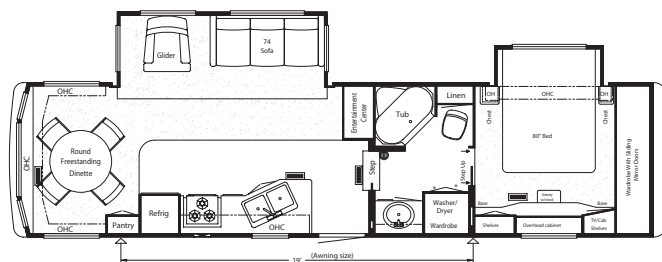


# NEWMAR SPECIFICATIONS: 2003 MOUNTAIN AIRE FIFTH WHEEL



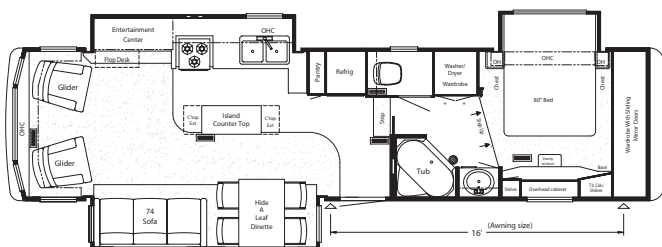
2003 Mountain Aire 34' BKWB-FW

Model	MAFW 34BKWB
TIRE SIZE	235/85R16-G
GAWR	7,000
GVWR	16,250
APP. LENGTH	35' 11"
APP. HEIGHT	12' 7"
WIDTH	101"
APP. DRY WEIGHT	12,669
APP. HITCH WEIGHT	2,407
FRESH WATER	75
GREY	92
SEWAGE CAP.	50
HEAT CAP.	42,000



2003 Mountain Aire 34' RDCK-FW

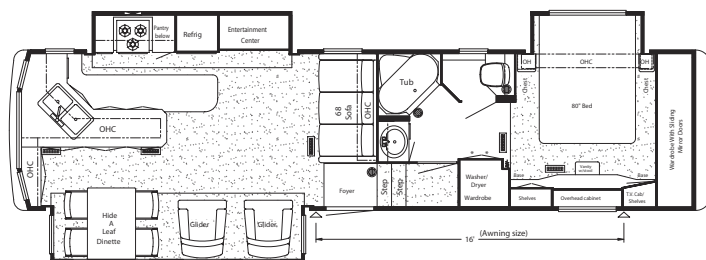
Model	MAFW 34RDCK
TIRE SIZE	235/85R16-G
GAWR	7,000
GVWR	16,250
APP. LENGTH	35' 11"
APP. HEIGHT	12' 7"
WIDTH	101"
APP. DRY WEIGHT	12,592
APP. HITCH WEIGHT	2,141
FRESH WATER	75
GREY	92
SEWAGE CAP.	50
HEAT CAP.	42,000



2003 Mountain Aire 35' BLKS-FW

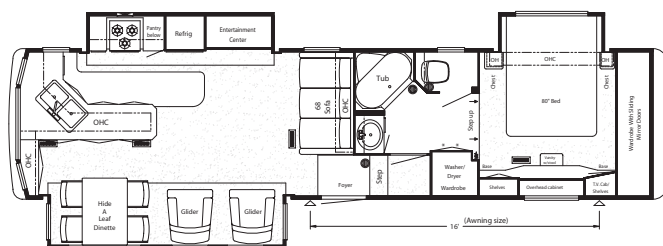
Model	MAFW 35BLKS
TIRE SIZE	235/85R16-G
GAWR	7,000
GVWR	16,250
APP. LENGTH	36' 8"
APP. HEIGHT	12' 7"
WIDTH	101"
APP. DRY WEIGHT	13,759
APP. HITCH WEIGHT	2,477
FRESH WATER	75
GREY	82
SEWAGE CAP.	50
HEAT CAP.	55,000

# NEWMAR SPECIFICATIONS: 2003 MOUNTAIN AIRE FIFTH WHEEL



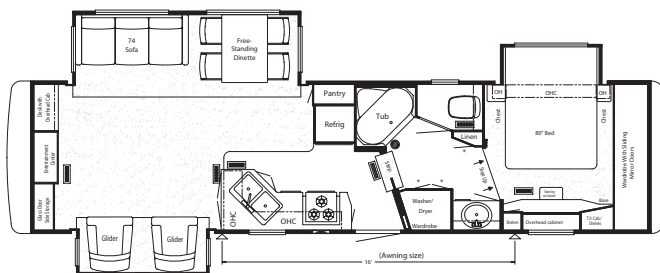
2003 Mountain Aire 35' LKBH-FW

Model	MAFW 35LKBH
TIRE SIZE	235/85R16-G
GAWR	7,000
GVWR	16,250
APP. LENGTH	36' 10"
APP. HEIGHT	13' 2"
WIDTH	101"
APP. DRY WEIGHT	14,458
APP. HITCH WEIGHT	2,458
FRESH WATER	75
GREY	92
SEWAGE CAP.	50
HEAT CAP.	55,000



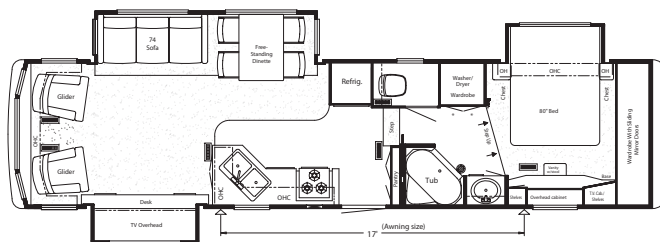
2003 Mountain Aire 35' LKSA-FW

<b>Model</b>	<b>MAFW 35LKSA</b>
TIRE SIZE	235/85R16-G
GAWR	7,000
GVWR	16,250
APP. LENGTH	36' 10"
APP. HEIGHT	12' 7"
WIDTH	101"
APP. DRY WEIGHT	13,930
APP. HITCH WEIGHT	2,229
FRESH WATER	75
GREY	92
SEWAGE CAP.	50
HEAT CAP.	55,000



2003 Mountain Aire 35' SKDS-FW

<b>Model</b>	<b>MAFW 35SKDS</b>
TIRE SIZE	235/85R16-G
GAWR	7,000
GVWR	16,250
APP. LENGTH	36' 4"
APP. HEIGHT	12' 7"
WIDTH	101"
APP. DRY WEIGHT	13,788
APP. HITCH WEIGHT	2,482
FRESH WATER	75
GREY	82
SEWAGE CAP.	50
HEAT CAP.	55,000

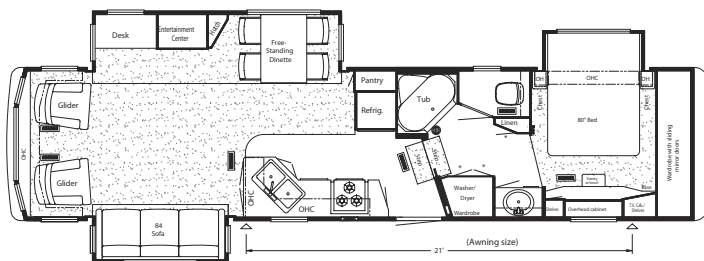


2003 Mountain Aire 37' BLDS-FW

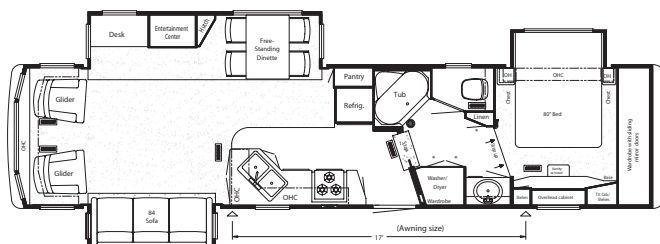
<b>Model</b>	<b>MAFW 37BLDS</b>
TIRE SIZE	235/85R16-E
GAWR	6,000
GVWR	18,500
APP. LENGTH	37' 4"
APP. HEIGHT	12' 7"
WIDTH	101"
APP. DRY WEIGHT	14,221
APP. HITCH WEIGHT	2,560
FRESH WATER	75
GREY	92
SEWAGE CAP.	50
HEAT CAP.	55,000



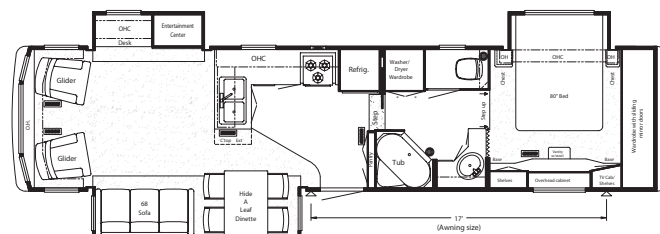
# NEWMAR SPECIFICATIONS: 2003 MOUNTAIN AIRE FIFTH WHEEL



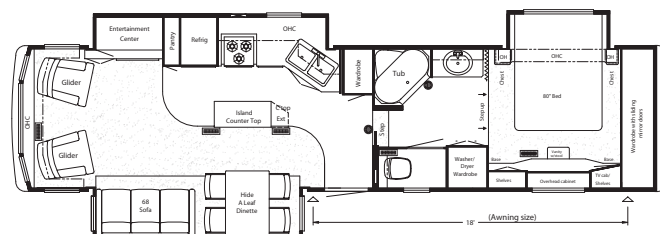
2003 Mountain Aire 37' BLFB-FW



2003 Mountain Aire 37' RLFB-FW



2003 Mountain Aire 38' CKRL-FW



2003 Mountain Aire 38' KSWB-FW

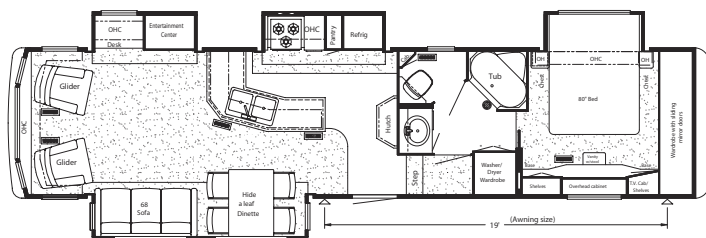
Model	MAFW 37BLFB
TIRE SIZE	235/85R16-E
GAWR	6,000
GVWR	18,500
APP. LENGTH	38' 7"
APP. HEIGHT	13' 2"
WIDTH	101"
APP. DRY WEIGHT	14,872
APP. HITCH WEIGHT	2,974
FRESH WATER	75
GREY	82
SEWAGE CAP.	50
HEAT CAP.	55,000

Model	MAFW 37RLFB
TIRE SIZE	235/85R16-E
GAWR	6,000
GVWR	18,500
APP. LENGTH	38' 7"
APP. HEIGHT	12' 7"
WIDTH	101"
APP. DRY WEIGHT	14,319
APP. HITCH WEIGHT	2,721
FRESH WATER	75
GREY	82
SEWAGE CAP.	50
HEAT CAP.	55,000

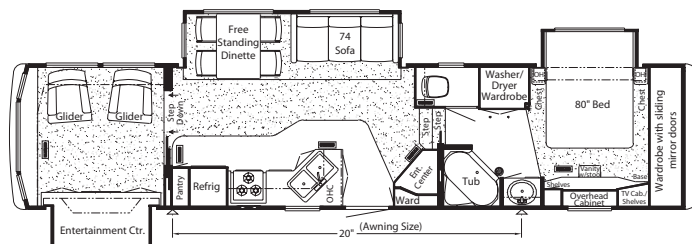
Model	MAFW 38CKRL
TIRE SIZE	235/85R16-E
GAWR	6,000
GVWR	18,500
APP. LENGTH	38' 4"
APP. HEIGHT	12' 7"
WIDTH	101"
APP. DRY WEIGHT	14,250
APP. HITCH WEIGHT	2,423
FRESH WATER	75
GREY	92
SEWAGE CAP.	50
HEAT CAP.	55,000

Model	MAFW 38KSWB
TIRE SIZE	235/85R16-E
GAWR	6,000
GVWR	18,500
APP. LENGTH	38' 1"
APP. HEIGHT	12' 7"
WIDTH	101"
APP. DRY WEIGHT	14,682
APP. HITCH WEIGHT	2,496
FRESH WATER	75
GREY	92
SEWAGE CAP.	50
HEAT CAP.	55,000

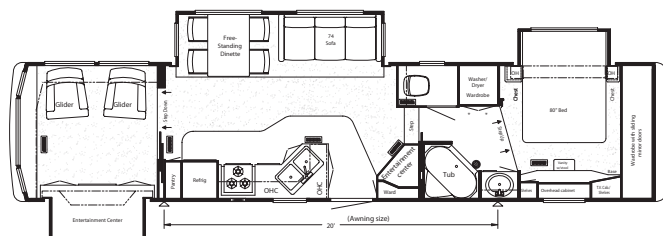
## NEWMAR SPECIFICATIONS: 2003 MOUNTAIN AIRE FIFTH WHEEL



2003 Mountain Aire 38' RLPK-FW



2003 Mountain Aire 39' SDKC-FW



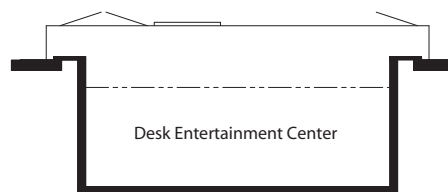
2003 Mountain Aire 39' SDTS-FW

Model	MAFW 38RLPK
TIRE SIZE	235/85R16-E
GAWR	6,000
GVWR	18,500
APP. LENGTH	39' 4"
APP. HEIGHT	12' 7"
WIDTH	101"
APP. DRY WEIGHT	14,850
APP. HITCH WEIGHT	2,673
FRESH WATER	75
GREY	92
SEWAGE CAP.	50
HEAT CAP.	55,000

Model	MAFW 39SDKC
TIRE SIZE	235/85R16-E
GAWR	6,000
GVWR	18,500
APP. LENGTH	39' 11"
APP. HEIGHT	13' 2"
WIDTH	101"
APP. DRY WEIGHT	15,292
APP. HITCH WEIGHT	2,753
FRESH WATER	75
GREY	82
SEWAGE CAP.	50
HEAT CAP.	55,000

Model	MAFW 39SDTS
TIRE SIZE	235/85R16-E
GAWR	6,000
GVWR	18,500
APP. LENGTH	39' 11"
APP. HEIGHT	12' 7"
WIDTH	101"
APP. DRY WEIGHT	14,716
APP. HITCH WEIGHT	2,656
FRESH WATER	75
GREY	82
SEWAGE CAP.	50
HEAT CAP.	55,000

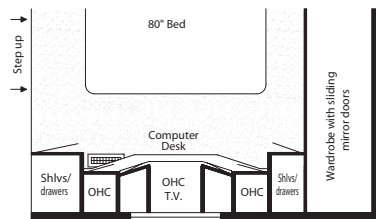
## FLOORPLAN OPTIONS: 2003 MOUNTAIN AIRE FIFTH WHEEL



Option K470	Desk/Entertainment Ctr. MAFW: 39SDTS
-------------	---

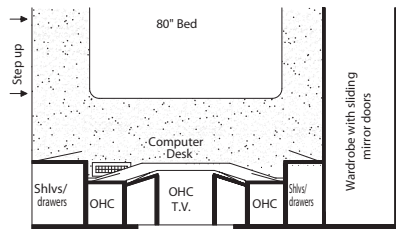


# FLOORPLAN OPTIONS: 2003 MOUNTAIN AIRE FIFTH WHEEL



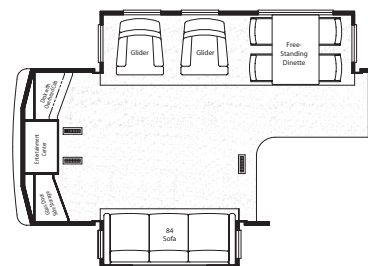
**Option K561**

<b>Computer Desk</b>
MAFW: 34BKWB, 34RDCK, 35LKSA, 38CKRL, 38KSWB, 38RLPK



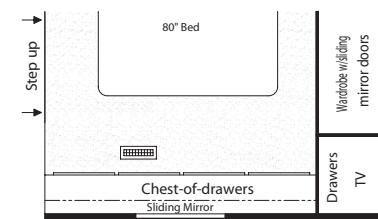
**Option K562**

<b>Computer Desk</b>
MAFW: 35LKBH



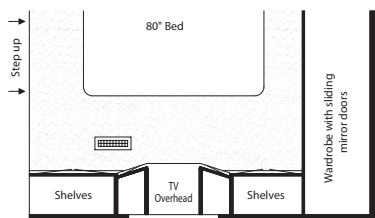
**Option K790**

<b>Rear Entertainment Ctr.</b>
MAFW: 37RLFB



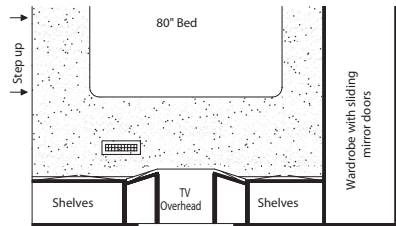
**Option M430**

<b>Dresser Ctr.</b>
MAFW: 34BKWB, 34RDCK, 35LKSA, 38CKRL, 38KSWB, 38RLPK



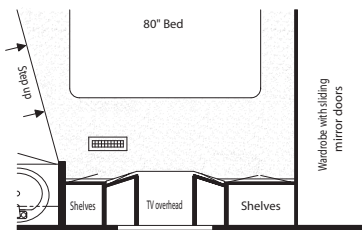
**Option M466**

<b>Vanity/Dresser</b>
MAFW: 34BKWB, 34RDCK, 35LKSA, 38CKRL, 38KSWB, 38RLPK



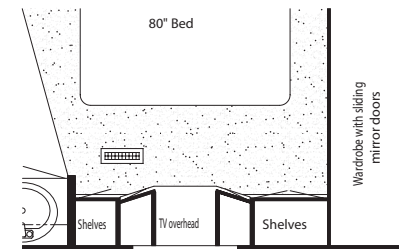
**Option M467**

<b>Vanity Over Dresser</b>
MAFW: 35LKBH



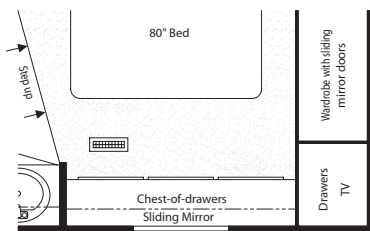
**Option M764**

<b>Vanity Over Dresser Ctr.</b>
MAFW: 35BLKS, 35SKDS, 37BLDS, 37RLFB, 39SDTS



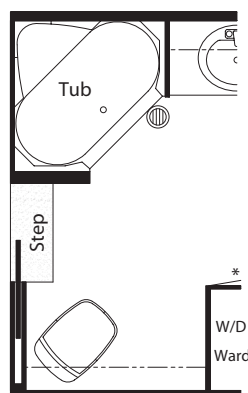
**Option M765**

<b>Vanity Over Dresser Center</b>
MAFW: 39SDKC



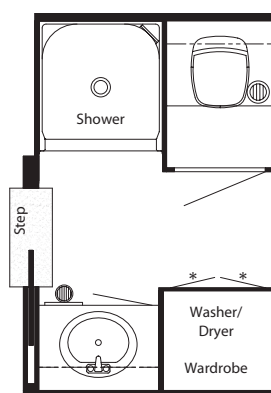
**Option M759**

<b>Dresser Ctr.</b>
MAFW: 35BLKS, 35SKDS, 37BLDS, 37RLFB, 39SDTS



**Option P160**

<b>Unenclosed Stool</b>
MAFW: 34BKWB, 38KSWB



**Option P180**

<b>Enclosed Stool Room With Straight Shower</b>
MAFW: 34RDCK

**3-36**

### **Newmar Freedom Warranty™**

The Newmar Freedom Warranty simply and clearly details the most impressive coverage in the industry. Three years or 36,000 miles, whichever comes first. Bumper to bumper. It's a symbol of our uncompromising pursuit of quality.

Newmar takes great pride in ensuring our owners have made the right choice. It's yet another way of reinforcing Newmar's commitment to the customer, and a challenge to the rest of the industry to raise its standards for the benefit of all RV owners.

Newmar has made this kind of protection possible, not only by building quality products, but also by demanding the same level of quality from our component manufacturers. When Newmar required them to match this 36-month pledge, everyone stepped up as expected. Now, Newmar is pleased to include these companies in our warranty - making the Newmar warranty truly complete.

The Newmar Freedom Warranty covers all components, except tires, battery and chassis (which is warranted for at least 36 months by its manufacturer).



Newmar Quality: A Way of Life.

355 N DELAWARE ST

PO BOX 30

NAPPANEE IN 46550-0030

574.773.7791 • FAX: 574.773.2895

[www.newmarcorp.com](http://www.newmarcorp.com)

We invite you to visit our state-of-the-art production facility in Nappanee, Indiana. Plant tours are offered at 10 a.m. and 1 p.m. Monday through Friday.

Don't forget to check out the Newmar Kountry Klub. All you need for eligibility is to be a proud owner of any of the fine Newmar recreational vehicles.

Some features shown in our literature are optional. Colors and finishes are photographic representations and may appear differently when viewing actual materials. Prices, specifications, and floorplans are subject to change at Newmar's discretion without prior written notice or obligation. Please see your dealer for actual samples and specifications.

©2002 Newmar Corporation. Printed in the U.S.A. (2/7/03)