

2004 ESSEX
DIESEL PUSHER BY NEWMAR



2004 ESSEX

DIESEL PUSHER BY NEWMAR

DESTINATION:

Touring the Coast of Maine



NEWMARCORP.COM

The colorful seaports of coastal Maine are picture-perfect.



Whether you travel full time, frequently or once a year, Essex by Newmar makes life on the road a genuinely appealing proposition. It isn't something you settle for. It's something you aspire to. Because Essex provides comforts that really make you feel at home.

Step inside, and you could easily forget you're on wheels. Truly spacious living areas, with up to four available slideouts. Rich inlaid carpeting and tile flooring of polished porcelain. Plushly upholstered Villa® furniture. Finely detailed cabinetry of warm-hued wood. Decorative mirrors and glass cabinet-door inserts. Numerous windows with elegant window treatments. And a host of conveniences you might expect only in a custom-built home. All this makes for gracious living, however else you may define it.

Outside, of course, Essex has a classic automotive-style look—especially owing to Newmar's exclusive Full-Paint Masterpiece Finish.™ It's a perfect reflection of the artistry that goes into every detail of this superb coach.

A. In this quad-slide floor plan, the Essex living room definitely invites you to stay awhile and relax, given its stylish and supremely comfortable Villa furniture, its entertainment center that features a 32" Sony® plasma flat-screen TV and its casually elegant dinette.





ESSEX 4502/Windswept Pearl

JUNE 11 ~

Our mid-coast drive began in Weeasset, through a historic district of elegant homes built by wealthy sea captains and merchants.



A



ESSEX 450i/Pacific Blue



B

- A. Warm, rich interior appointments and the exceptional spaciousness created by a galley slideout make the Essex a true home.
- B. With its readily accessible controls and gauges, the newly designed Essex dash puts you in firm command of the road. The cockpit also provides a power Auto-Motion Shade™ for privacy and an optional electronic security system.
- C. The Essex's optional global positioning system (GPS)/backup monitor is conveniently located above the passenger cockpit seat in a fixed, easily viewable location.
- D. Extra—and extra-comfortable—sleeping accommodations are provided by the plush yet sleekly contemporary Villa® furniture fold-out sofa bed in the living room.



C



D

ESSEX 4502/Windswept Pearl

JUNE 12 ~

I've seen their photographs in lots of calendars, but there's nothing like seeing Elaine's lighthouse in person.



A



ESSEX 4502/Windswept Pearl



B

ESSEX 4501/Pacific Blue

- A. In the Essex kitchen, with its generous true-hardwood cabinets and its thoughtful, open layout, you have all the space and conveniences you need for relaxed meal preparation.
- B. The sink covers sit flush with the easy-to-clean, polished Corian® countertop, which features a distinctive, bullnosed wraparound edge with a slight lip to contain spills.
- C. This optional dishwasher-in-a-drawer upgrade is beautifully concealed behind a wood front designed to look like two cabinet drawers.
- D. Recalling the rich architectural detail of a classic formal sitting room or library is the fluted molding with decorative accents throughout the Essex.



C

ESSEX 4502/Mystic Sable



D

Rockland isn't called "the schooner capital of Maine" for nothing. It's the state's largest fishing port. And the seafood's extraordinary.



A



ESSEX 4502/Mystic Sable



B

ESSEX 4501/Pacific Blue

- A. Whichever Essex floor plan you choose, you'll find the kitchen remarkably accessible and accommodating. Note the handy pullout countertop extension.
- B. This Essex dinette features a convenient cantilevered table and elegant chairs. The space is further enriched by attractive—and useful—hardwood overhead cabinets.
- C. The two-door Side Wise® refrigerator/freezer by Dometic® offers 14 cubic feet of space to let you store an amazing amount of provisions.
- D. Behind its bold, space-age, brushed-aluminum exterior, this optional GE Advantium® microwave offers equally space-age cooking capabilities.



C

ESSEX 4501/Pacific Blue



D

ESSEX 4502/Mystic Sable

JUNE 14 ~

Crossed over to Mount Desert Island and the famous resort town of Bar Harbor. Bass Harbor, at the southern tip, is a classic fishing and lobstering village.



A

ESSEX 4502/Mystic Sable



B

ESSEX 4502/Windswept Pearl



ESSEX 4501/Pacific Blue

C

- A. The Essex bedroom gives you plenty of storage space, including a large wardrobe with compartmentalized shelving, shoe storage and room-expanding mirrored doors.
- B. Featured in the private bathroom is a generous mirrored vanity with a plush seat, a mirrored medicine cabinet and a fiberglass shower with a decorative door.
- C. Separating the bathroom from the bedroom is a gorgeous door with cathedral-style molding over a textured glass panel. The cathedral design is also reproduced on the shower door.
- D. Watch your favorite TV show or gather friends and family for a movie outdoors with the optional entertainment center contained in this exterior storage compartment. It features a 23" Sony® LCD monitor.
- E. You'll enjoy high-speed broadband Internet access with this optional low-profile tracNet™ satellite antenna.



D



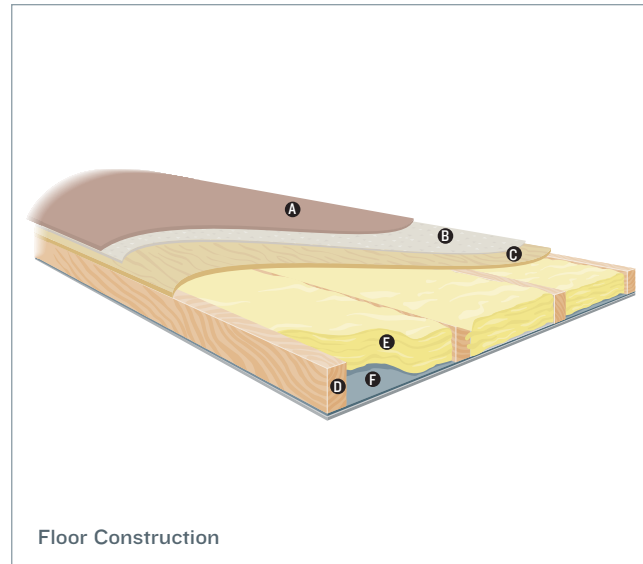
E

NEWMAR'S FREEDOM WARRANTY

Thanks to its solid engineering, your Essex Motorhome will provide years of travel pleasure.

Essex is a showcase for Newmar's exacting standards, meticulous detailing and careful craftsmanship—all unsurpassed. It also embodies Newmar's long history of product innovation and industry "firsts." For us, it's a matter of pride. And tradition. Of taking personal responsibility and building a product that each of us at Newmar would want to own.

As proof of our commitment, we back every Essex with a three-year/50,000-mile, bumper-to-bumper limited warranty: The Newmar Freedom Warranty. Ask your dealer for details. You're sure to find this comprehensive, industry-leading coverage a truly liberating experience.



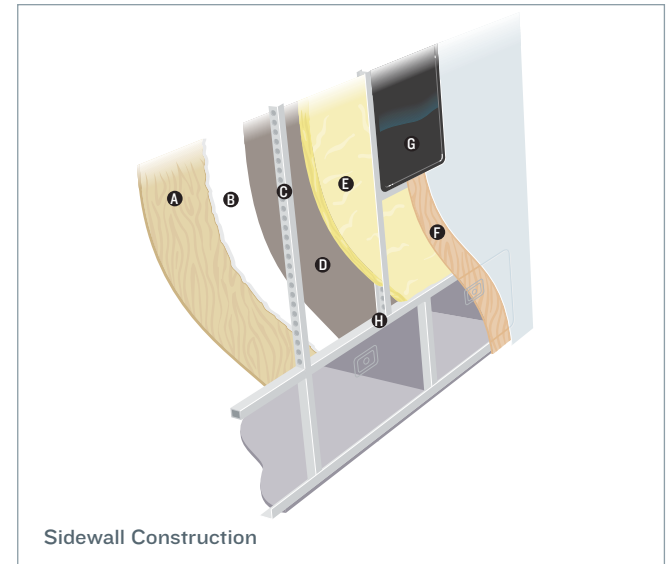
Floor Construction

- A. Plush carpet*
- B. Carpet padding
- C. 5/8" floor decking
- D. 2" x 3" wood stringer

*Ceramic tile, simulated floor and simulated tile options also available.

- E. Fiberglass batten insulation
- F. Polyethylene moisture barrier

Total R Value = 12

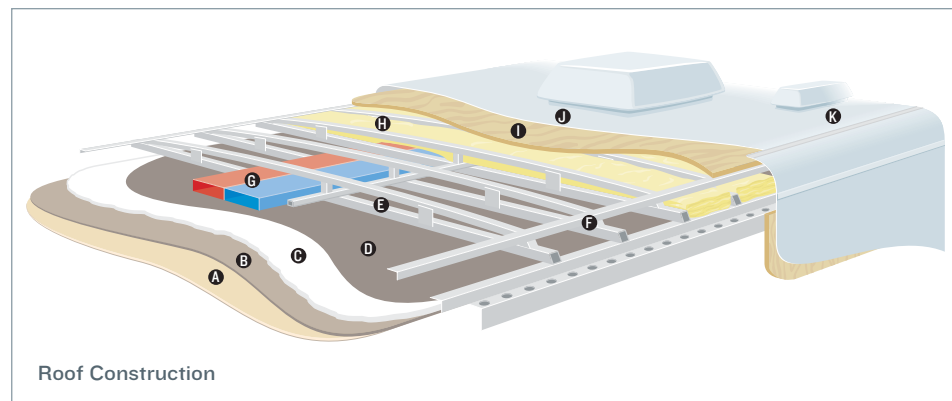


Sidewall Construction

- A. Plywood interior wall board
- B. 5/8" bead foam
- C. 1.5" C-channel aluminum studs with punched holes
- D. Kraft paper vapor barrier
- E. Fiberglass insulation

- F. Composite one-piece gel coat exterior sidewall
- G. Framed windows
- H. Aluminum sidewall structure with 16" on-center framing

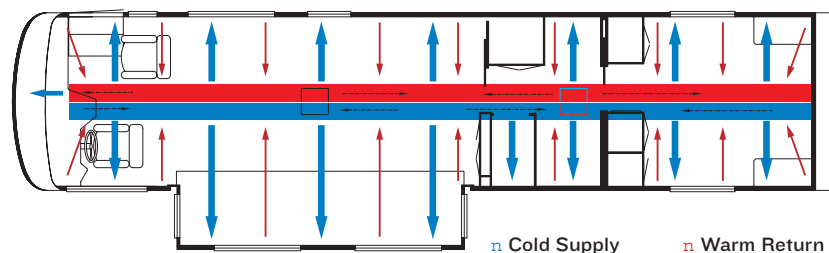
Total R Value = 11



Roof Construction

- A. Padded vinyl overlay
- B. 3/16" panel
- C. 5/8" bead foam
- D. Kraft paper vapor barrier
- E. 1" tubular aluminum truss rafter with full joint weld
- F. Welded aluminum crowned roof structure with 16" on-center framing
- G. True central air conditioning—insulated ducted distribution and return
- H. Fiberglass batten insulation
- I. 7mm wood decking
- J. One-piece molded fiberglass roof
- K. One-piece fiberglass caps

Total R Value = 16



TRUE CENTRAL AIR: Newmar's True Central Air System—standard with every Newmar RV—is just like those found in most site-built homes. It's actually two separate, fully ducted systems: one to distribute incoming cool air, the other to quickly and effectively remove warm air from every living area.

n Cold Supply n Warm Return



A



B



C



D



E

EXTERIOR FEATURES

- A. Essex exterior storage compartments under sliderooms feature unique side-swinging doors with slideout trays—no more awkward door lifting or propping.
- B. Smooth fiberglass end caps definitely enhance curb appeal.
- C. This optional sideview camera gives you greater visibility for more complex and safer maneuvering.
- D. The exterior rearview mirrors feature a turn-signal display.
- E. The 12 kW PowerTech® generator is housed in its own front-end compartment on an easily accessible power slideout tray.

Huge waves crashed around us as we walked the rocky coast of Acadia National Park. Later, we drove to the summit of Cadillac Mt.



A



B



C



D

INTERIOR COLORS

- A. Windswept Pearl
- B. Pacific Blue
- C. Cactus Fern
- D. Mystic Sable

NEWMARCORP.COM

Here you'll discover the latest model specifications, floor plans and options, as well as information on who we are, how we work and what we believe in.



A



B



C



D

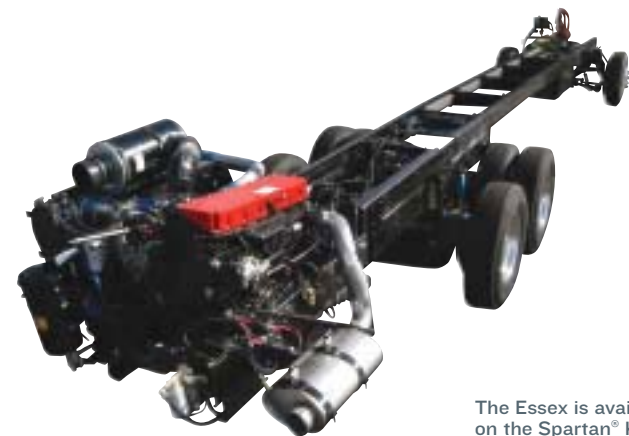
EXTERIOR COLORS

(ALL UNITS ARE FULL-PAINT)

- A. Windswept Pearl
- B. Pacific Blue
- C. Cactus Fern
- D. Mystic Sable

FULL-PAINT MASTERPIECE FINISH™

The Full-Paint Masterpiece Finish from Newmar creates an exterior of stunning beauty and incredible endurance — a true work of art. Newmar is an industry leader in applying full body paint to its coaches. We are pleased to offer it standard on your Essex Diesel Pusher Motorhome.



The Essex is available on the Spartan® K2 chassis with a Cummins® 500 HP ISM Engine.



www.spartanmotors.com

Wonder where our next road will lead?

THE NEWMAR KOUNTRY KLUB

As a Newmar owner, you qualify for membership in the Newmar Kountry Klub. Join your local chapter, and just look at the perks you'll enjoy: friendship, fun and adventure with other Newmar owners • rallies and caravans • special RV show events • discounts on RV services • a free monthly Klub magazine • Klub merchandise. And that's just for starters.

Join today! Call 877-639-5582, toll-free, or visit the Klub section of newmarcorp.com.

THE NEWMAR FACTORY TOUR

We'd love to have you visit our state-of-the-art production facility in Nappanee, Indiana. For details, including tour days and times, please call 574-773-7791.

NEWMAR CORPORATION
355 N DELAWARE ST
PO BOX 30
NAPPANEE IN 46550-0030
574-773-7791 Fax 574-773-2895
www.newmarcorp.com

Official Newmar Dealer:



NEWMAR QUALITY: A WAY OF LIFE

Some features shown in our literature are optional. Colors and finishes are photographic representations: The actual materials may look different. Prices, specifications and floor plans are subject to change at Newmar's discretion without prior written notice or obligation. Please see your dealer for actual samples and specifications. © 2003 Newmar Corporation. Printed in the U.S.A. (06/03)

2004 ESSEX
DIESEL PUSHER BY NEWMAR



2004 ESSEX

DIESEL PUSHER BY NEWMAR

Destination:

Touring the Coast of Maine



NEWMARCORP.COM

SPECIFICATIONS

STANDARD FEATURES

MOTORIZED CHASSIS FEATURES

- Cruise Control
- Anti-Lock Braking System
- Tilt and Telescope Steering Wheel
- Recessed Fuel Fills with Cross Over To Fill From Either Side
- Spartan® K2 with Cummins® ISM 500 HP Engine
- Backup Alarm
- Alcoa® Dura Brite Wheels

AIR CONDITIONING & HEATING

- Two 15,000 Btu Penguin® Heat Pump Central Air Conditioners on 41' Floor Plans
- Three 15,000 Btu Penguin Heat Pump Central Air Conditioners on 45' Floor Plans
- LP Leak Detector
- Dash Heater and High-Output Air Conditioner with Dual Controls
- Hydronic Zone Heating System

APPLIANCES & ACCESSORIES

- 30" Convection Microwave
- 32" Sony® Plasma TV
- Sony 24" Flat-Screen Color TV in Bedroom
- Two-Burner Recessed Cooktop
- AM/FM/XM Dash Radio with Remote 6-Disc CD Changer
- Dometic® I402 Refrigerator with Icemaker (13.8 Cu. Ft.)
- TV Antenna with Power Lift, One Exterior Jack and Two Interior Jacks
- VCR and Audio Video Smart Source Switch with Remote Control
- Cable TV Connection with RG 6 Coax
- Satellite Prep (Phone, TV Jack and Recept)
- Washer/Dryer Prep for Compact Washer/Dryer
- Air Horns
- Safe
- Bose® Wave Radio with CD Player and Alarm Clock in Bedroom
- Interior Rearview Mirror with Electronic Compass and Temperature Display
- Rearview Color Monitor System
- Surround Sound System in Living Area with CD and DVD Player

CABINETS & FURNITURE

- Villa® Ultra Leather Front Seats with Eight-Way Power Lumbar Support and Oversized Passenger Seat
- Villa Easy Bed Sofa with Storage Drawer
- Villa Ultra Leather L-Lounge with Storage Drawer
- Sherwood Oak Hardwood Unitized Cabinets with Raised-Panel Double-Arched Cabinet Doors

- Polished Corian® Countertop in Kitchen with Integrated Sink Bowls and Flush Sink Covers
- Polished Corian Lavatory Countertop in Bathroom with an Integrated Bowl
- Polished Corian Countertop on Bedroom Nightstands
- Lifts on Bed to Access Storage Area
- Cedar Paneling on Rear Wardrobe Wall
- Built-in Shoe Rack on Rear Wardrobe Wall

ELECTRICAL FEATURES

- 75-amp Converter
- Battery Disconnect for House Batteries
- 8.0 PowerTech® Diesel Quiet Series Generator on Power Slides with Automatic Changeover on 41' Floor Plans
- 12.0 PowerTech Diesel Quiet Series Generator on Power Slides with Automatic Changeover on 45' Floor Plans
- 5-Watt Solar Panel to Charge Chassis Battery
- 50-amp Electrical Service
- 50-amp Flexible Cord on Power Rewind Cord Reel
- Emergency Engine Start Switch
- Exterior Security Lights (One Installed on Each Side)
- Lights in Exterior Storage Compartments
- Daytime Headlight System
- Lights in Wardrobes
- Solar Prep, Wire from Roof to Battery Compartment
- ICC Light Flasher Switch
- Four 6 V House Batteries on Pullout Tray
- Recessed Docking Lights
- Automatic Generator Start on Low Battery or Thermostat Temperature Setting
- Mood Lights Recessed in Ceiling, Lambrequins and Kitchen Valance
- Trace® 2000-Watt Inverter
- Driving Lights
- Interior Courtesy Lights
- Sidemounted Front and Rear Turn Signals
- Halogen Lights Recessed in Ceiling

EXTERIOR FEATURES

- Convex Exterior Chrome Mirrors with Remote Control, Defrost and Turn Signal Indicators
- Gel-Coated Fiberglass Exterior Sides
- One-Piece Molded Fiberglass Roof and Top Wrap with 7mm Decking
- Class 5, 10,000 lb. Hitch
- Hydraulic Leveling Jacks with Automatic Control and Air Dump
- Fully Painted Exterior Graphics with Super Clearcoat Finish
- Front Protective Film

SPECIFICATIONS

INTERIOR FEATURES

- Lined Day/Night Pleated Window Shades and Lambrequins
- Padded Vinyl Ceiling
- Quilted Bedspread, Pillow Shams, Padded Bed Base and Accent Pillows
- Luxurious Pillowtop Mattress
- Polished Porcelain Floor Tile in Kitchen, Bathroom and Entry Area
- Hardwood Fascia on Living Area Slideout
- Power Side Shades and Front Visors for Driver and Passenger
- Power-Activated Windshield-Area Privacy Shade
- Fabrica® Sculptured Carpet in Living Area

PLUMBING & BATH FEATURES

- Exterior Convenience Wash Station with Hot/Cold Water, Soap Dispenser and Towel Dispenser
- Monitor Panel
- Sewage Holding-Tank Rinse
- Thetford® Aria Sculptured China Stool
- Fiberglass Tub/Shower with Glass Shower Door
- Demand Water System with Aquajet® ES Pump
- Automatic-Rewind Water Hose Reel
- Water Filter with Drink Dispenser at Kitchen Sink
- Delta® Faucets in Kitchen and Bathroom
- Water Filter for Entire Unit
- MANABLOC® Manifold Plumbing System

CONSTRUCTION FEATURES

- Aluminum-Frame Sidewalls and Roof Construction, 16" On Center
- Roof R-Value Rating: 17
- Sidewall R-Value Rating: 11
- Floor R-Value Rating: 11
- 5/8" Foam Insulation Laminated in Sidewalls and Ceiling
- R7 Fiberglass Insulation in Sidewalls and Floor, R11 in Roof

WINDOWS, AWNINGS & VENTS

- Double-Pane, Tinted Safety-Glass Windows
- Automatic Double Entrance-Door Step
- Fan-Tastic® Vent with Rain Sensor in Kitchen and Bathroom
- Skylight in Bathroom
- Front Entry Door with Power Flush Stepwell Cover
- Driver's-Side Power Window
- A&E® Weather Pro Power Awning
- A&E 9000 Window Awnings
- A&E Oasis Power Front Entrance-Door Awning
- A&E Slideout Covers

OPTIONAL FEATURES

MOTORIZED CHASSIS FEATURES

- Trip Tek Electronic Travel Information, Displayed on Rearview Monitor Screen (5 lb.)

APPLIANCES & ACCESSORIES

- Norcold® Four-Door Refrigerator
- Stackable Washer/Dryer
- Compact Washer/Dryer (185 lb.)
- Navigation System Available with Additional Monitor for Passenger's Use
- External Entertainment Center with LCD Monitor and AM/FM CD Radio (132 lb.)
- 100 lb. Norcold Freezer Pullout Tray
- 30" Speedcook Advantium® Microwave (16 lb.)
- Dishwasher-in-a-Drawer Available on 45' Floor Plans
- OnStar® System with First-Year \$400 Service Included
- Security System

CABINETS & FURNITURE

- Natural Cherry Hardwood Cabinets
- Northern Maple Hardwood Cabinets
- Regent Cherry Hardwood Cabinets
- King-Size Bed
- Ultra Leather/Vinyl Euro Recliner with Ottoman and Table
- Villa® Sofa/Dinette Ensemble (50 lb.)
- Ultra Leather Sofa in Lieu of Fabric

ELECTRICAL FEATURES

- 12 kW Onan® Diesel Quiet Series Generator Available on 45' Floor Plans
- 7.5 kW Onan Diesel Quiet Series Generator Available on 41' Floor Plans (25 lb.)
- Exterior Security Lights, Two Installed on Each Side (2 lb.)
- Power Slideout Lock Arms

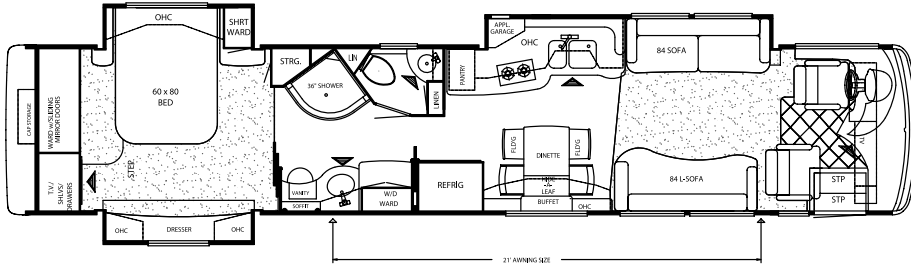
EXTERIOR FEATURES

- Rear Ladder
- Sideview Cameras Displayed on Rearview Monitor System

WINDOWS, AWNINGS & VENTS

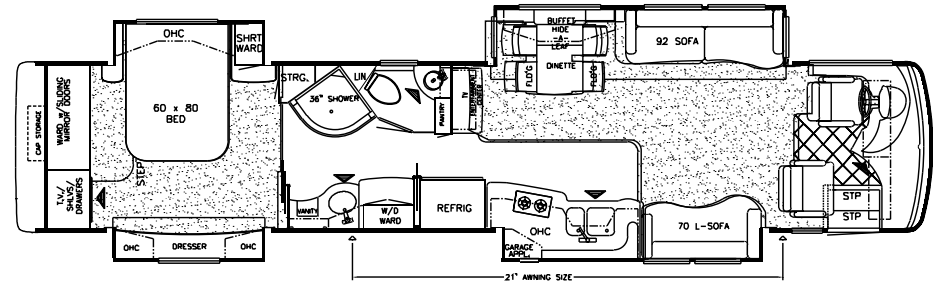
- Girard® Power Side Awning with Wind Sensor and Remote Control (100 lb.)
- Carefree® Awning Package with Mirage Side Awning and Power Window Awnings
- Keyless Entrance Door Pad

FLOOR PLANS



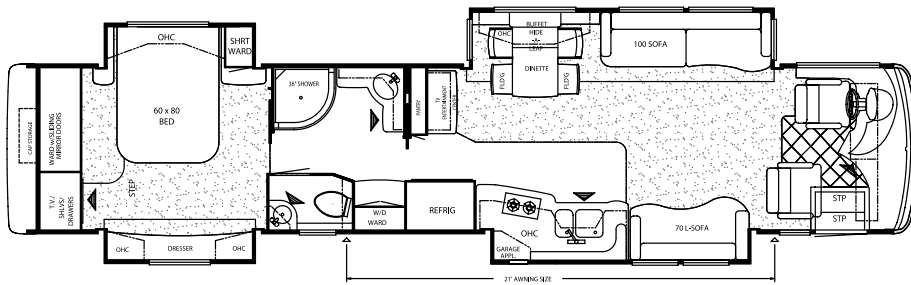
Model Shown: EXDP 4501

Floor Plan Options: K565, K631, K690, RI00



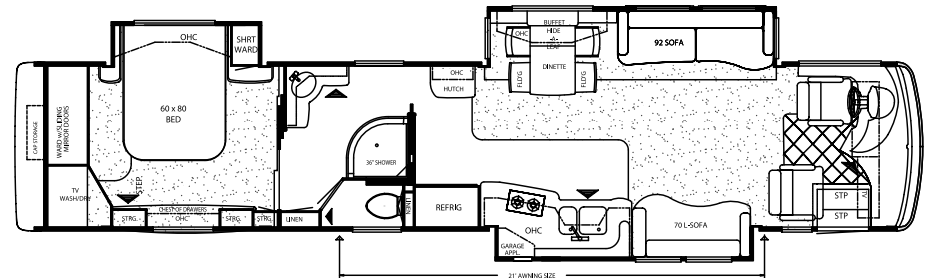
Model Shown: EXDP 4502

Floor Plan Options: K565, K631, RI00



Model Shown: EXDP 4503

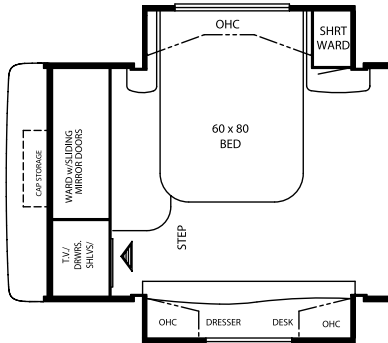
Floor Plan Options: K565, K631, RI00



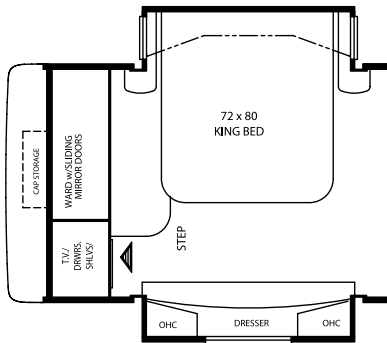
Model Shown: EXDP 4504

Floor Plan Options: K631, RI00

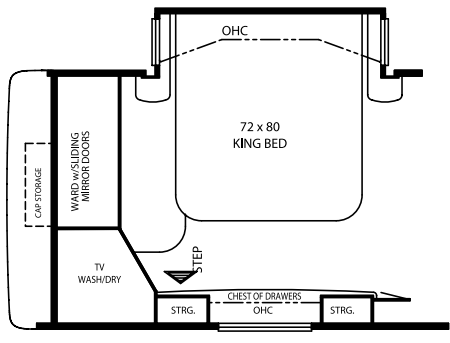
FLOOR PLAN OPTIONS



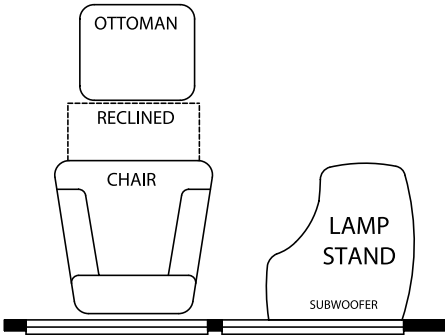
Option K565 COMPUTER DESK IN BEDROOM
EXDP: 4501, 4502, 4503



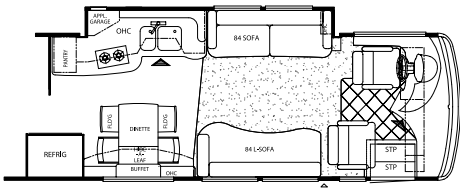
Option K631 KING BED WITH SIDE WINDOWS
EXDP: 4501, 4502, 4503



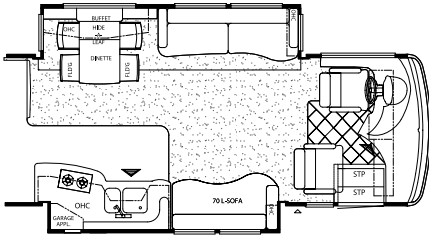
Option K631 KING BED WITH SIDE WINDOWS
EXDP: 4504



Option K690 CHAIR WITH OTTOMAN AND LAMP STAND
EXDP: 4501



Option RI00 POWER LOCK ARMS
EXDP: 4501



Option RI00 POWER LOCK ARMS
EXDP: 4502, 4503, 4504

FLOOR PLAN SPECIFICATIONS

| FLOOR PLAN | APP. OVERALL LENGTH | WIDTH | APP. OVERALL HEIGHT | INTERIOR WIDTH | INTERIOR HEIGHT | GREY | SEWAGE | WATER | LP | FURNACE | WATER HEATER |
|------------|---------------------|--------|---------------------|----------------|-----------------|---------|---------|----------|---------|------------|--------------|
| EXDP 4501 | 44' 11" | 101.5" | 12' 6" | 95.5" | 82" | 65 gal. | 45 gal. | 105 gal. | 32 gal. | 50,000 Btu | continuous |
| EXDP 4502 | 44' 11" | 101.5" | 12' 6" | 95.5" | 82" | 65 gal. | 45 gal. | 105 gal. | 32 gal. | 50,000 Btu | continuous |
| EXDP 4503 | 44' 11" | 101.5" | 12' 6" | 95.5" | 82" | 65 gal. | 45 gal. | 105 gal. | 32 gal. | 50,000 Btu | continuous |
| DSDP 4504 | 44' 11" | 101.5" | 12' 6" | 95.5" | 82" | 65 gal. | 45 gal. | 105 gal. | 32 gal. | 50,000 Btu | continuous |

CHASSIS SPECIFICATIONS

SPARTAN CHASSIS INFORMATION (Diesel Pusher—Optional)

| FLOOR PLAN | ENGINE HP | AXLE RATIO | FUEL CAP. | WHEEL BASE | *FRONT GAWR | *REAR GAWR | *TAG GAWR | *GVWR | *GCWR | APP. UVW | APP. NCC |
|------------|-----------|------------|-----------|------------|-------------|------------|------------|------------|------------|------------|-----------|
| EXDP 4501 | 500 | 4.11 | 150 gal. | 296"+TAG | 14,200 lb. | 20,000 lb. | 10,000 lb. | 44,200 lb. | 54,200 lb. | 35,600 lb. | 8,600 lb. |
| EXDP 4502 | 500 | 4.11 | 150 gal. | 296"+TAG | 14,200 lb. | 20,000 lb. | 10,000 lb. | 44,200 lb. | 54,200 lb. | 37,300 lb. | 6,900 lb. |
| EXDP 4503 | 500 | 4.11 | 150 gal. | 296"+TAG | 14,200 lb. | 20,000 lb. | 10,000 lb. | 44,200 lb. | 54,200 lb. | 37,400 lb. | 6,800 lb. |
| EXDP 4504 | 500 | 4.11 | 150 gal. | 296"+TAG | 14,200 lb. | 20,000 lb. | 10,000 lb. | 44,200 lb. | 54,200 lb. | 36,225 lb. | 7,975 lb. |

Lengths, Heights, Widths and Dry Weights are approximate. Weight will vary, based on optional equipment added to the above base weight.

GAWR: Gross Axle Weight Rating is the maximum permissible weight for an axle.

GVWR: Gross Vehicle Weight Rating is the maximum permissible weight of a fully loaded motorhome.

GCWR: Gross Combination Weight Rating is the value specified by the manufacturer of the vehicle as the maximum allowable loaded weight of this motorhome and any towed trailer or towed vehicle.

UVW: Unloaded Vehicle Weight is the weight of this motorhome as built at the factory with full fuel, engine oil and coolants. The UVW does not include cargo, fresh water, LP gas or dealer-installed accessories.

NCC: Net Carrying Capacity is the maximum weight of all occupants, including the driver, personal belongings, food, fresh water, waste water, LP gas tools, tongue weight of towed vehicle, dealer-installed accessories, etc., that can be carried by the motorhome.

*Specifications supplied by chassis manufacturer.

NOTES

A series of horizontal dotted lines for writing notes.



www.spartanmotors.com

Wonder where our next road will lead?

THE NEWMAR KOUNTRY KLUB

As a Newmar owner, you qualify for membership in the Newmar Kountry Klub. Join your local chapter, and just look at the perks you'll enjoy: friendship, fun and adventure with other Newmar owners • rallies and caravans • special RV show events • discounts on RV services • a free monthly Klub magazine • Klub merchandise. And that's just for starters.

Join today! Call 877-639-5582, toll free, or visit the Klub section of newmarcorp.com.

THE NEWMAR FACTORY TOUR

We'd love to have you visit our state-of-the-art production facility in Nappanee, Indiana. For details, including tour days and times, please call 574-773-7791.

NEWMAR CORPORATION
355 N DELAWARE ST
PO BOX 30
NAPPANEE IN 46550-0030
574-773-7791 Fax 574-773-2895
www.newmarcorp.com

Official Newmar Dealer:



NEWMAR QUALITY: A WAY OF LIFE

Some features shown in our literature are optional. Colors and finishes are photographic representations. The actual materials may look different. Prices, specifications and floor plans are subject to change at Newmar's discretion without prior written notice or obligation. Please see your dealer for actual samples and specifications. © 2003 Newmar Corporation. Printed in the U.S.A. (06/03)