

2005 | AMERICAN STAR FIFTH WHEEL  
*by Newmar*



## VALUE ... IN A NEW LIGHT

---

STEP INTO AN AMERICAN STAR FIFTH WHEEL, AND IT'S SURE TO BE A REVELATION. HOW COULD A COACH OF SUCH STYLE AND WARMTH, WITH SO MANY EXTRAORDINARY FEATURES, BE OFFERED AT SO AFFORDABLE A PRICE?

THE ANSWER IS SIMPLE TO UNDERSTAND. YET IT'S HARD TO ACHIEVE—FOR ANYONE BUT NEWMAR, THAT IS. IT ALL COMES DOWN TO EXPERIENCE, SMART DESIGN AND COST-EFFECTIVE MANUFACTURING.

THAT ENABLES NEWMAR TO EQUIP THE AMERICAN STAR WITH A HUGE PASS-THROUGH STORAGE BAY, TRULY SPACIOUS INTERIORS AND STANDARDS SOME MANUFACTURERS DON'T EVEN OFFER AS OPTIONS. THAT'S VALUE.

IN A WHOLE NEW LIGHT.









The image shows the interior of a Newmar American Star RV. The living room features a large slideout section with a sofa and a rocker-recliner chair. There is a dining table with four chairs in the foreground. Large windows with pleated shades and decorative valances provide a view of the outdoors. Overhead cabinets are visible above the slideout area. The interior is finished with wood paneling and a warm, inviting color scheme.

*Slideout*

*Overhead Cabinets*

*Window  
Treatments*

*Rocker-Recliner*

## A ROOM WITH A VIEW

### *Slideout*

Newmar pioneered RV slideouts and puts them to excellent use in the American Star living room, letting you stretch out and "live large."

### *Rocker-Recliner*

For added comfort, consider this optional swivel, rocker-recliner chair.

### *Overhead Cabinets*

Storage space is always at a premium, especially in the living room, so these overhead cabinets can really come in handy.

### *Window Treatments*

Fashionable yet timelessly tasteful window treatments, including lambrequins and optional pleated day/night shades, lend a sense of serenity throughout the coach.





34BLSK/Sungold



34BLSK/Sungold

LEFT: Whether you use a computer or not, this appealing workstation—complete with generous desktop and drawer space—is sure to be useful.

ABOVE: Handsome built-in cabinetry is included to accommodate your television and video components.

BELOW: Plush comfort, firm support and pleasing decor-coordinated fabrics highlight the optional American Star Hide-a-Bed sofa. Pull out the cushion section, open it up, and you've got plenty of extra sleeping accommodations.



31DCFB/Palm Spring

Innovative Concept #47:  
*Hide-a-Bed*

1.



2.



3.







**A BEACON FOR FRIENDLY GATHERINGS**





30BKCL/Blue Spray



31DCFB/Palm Spring

LEFT: Wherever you go, home-cooked meals are easy to prepare in the American Star kitchen. Among its top features are a three-burner range and oven with piezo ignition, a 22-inch Dometic® microwave, an eight-cubic-foot Dometic refrigerator and plenty of storage space. Cabinets feature oak hardwood raised-panel doors. Countertop space is generous. And the long row of windows helps create an open working space.

ABOVE: The optional free-standing dinette table is complemented by four plushly upholstered freestanding sidechairs.

BELOW: Sealed burners and a bi-fold range cover make range cleanups fast and simple.



34BLSK/Sungold





34BLSK/Sungold

# COMFORTS TO KEEP YOU GLOWING



ABOVE: You're sure to get a good night's sleep any time in an American Star bedroom. The queen-sized bed is enhanced with a quilted headboard and bedspread, a reverse sham and accent pillow. The bed flips up, giving you access to spacious storage area underneath. The deep wardrobe offers compartmentalized shelving for shoes and smaller clothing items.

LEFT: The bathroom offers plenty of cabinet space, an easy-cleaning laminate countertop, a sink with a single-lever faucet and a tub/shower surround with a shower door.

BELOW: On selected floorplans the bedroom's optional vanity center provides a welcome touch of home.



31DCFB/Palm Spring

34BLSK/Sungold





Blue Spray

A

A. For a unified, finished exterior look, the coach offers an optional painted bottom exterior wrap. And the eight-lug-bolt pattern on the 16-inch wheels matches that on your Chevy® or Ford® tow vehicle. In addition to the large wheels, the dual-axle assures solid, stable road performance.

B. Optional BriteTEK™ roofing offers exceptional durability and easily supports the air conditioner, which is roof-mounted for greater efficiency.

C. The 2005 American Star Fifth Wheel offers expansive basement pass-through storage which includes open access to the front storage compartment.

B



C



## THE NEWMAR KOUNTRY KLUB

As a Newmar owner, you qualify for membership in the Newmar Kountry Klub. Join your local chapter, and just look at the perks you'll enjoy: friendship, fun and adventure with other Newmar owners • rallies and caravans • special RV show events • discounts on RV services • a free monthly Klub magazine • Klub merchandise. And that's just for starters.

Join today. Call 877.639.5582, toll-free, or visit the Kountry Klub section of [newmarcorp.com](http://newmarcorp.com).





#### PROTECTED C-CHANNELS

*To keep the electrical wiring that runs through holes in the aluminum-frame C-channels from chafing, each hole is ringed with a rubber grommet.*

# NOTHING ENDURES LIKE A NEWMAR

Your American Star Fifth Wheel is built to go the distance. And for good reason: It's assembled on the same production line, to the same exacting standards and with the same meticulous care, as all Newmar coaches. It also reflects Newmar's long history of product innovation and industry "firsts." For us, this is a matter of pride. And tradition. Of taking personal responsibility and building a product we ourselves would want to own.

For the third year in a row, Newmar has won RVDA's Quality Circle Award, given in accordance with the results of an annual RV dealer satisfaction survey. The survey asks RV dealers to evaluate manufacturers' performance in four major categories: Sales Support, Product Competitiveness, Service and Warranty Support. We are honored to receive this award, of course. It tells us that our efforts on behalf of our dealers and customers are appreciated. And we will continue working to keep their trust.





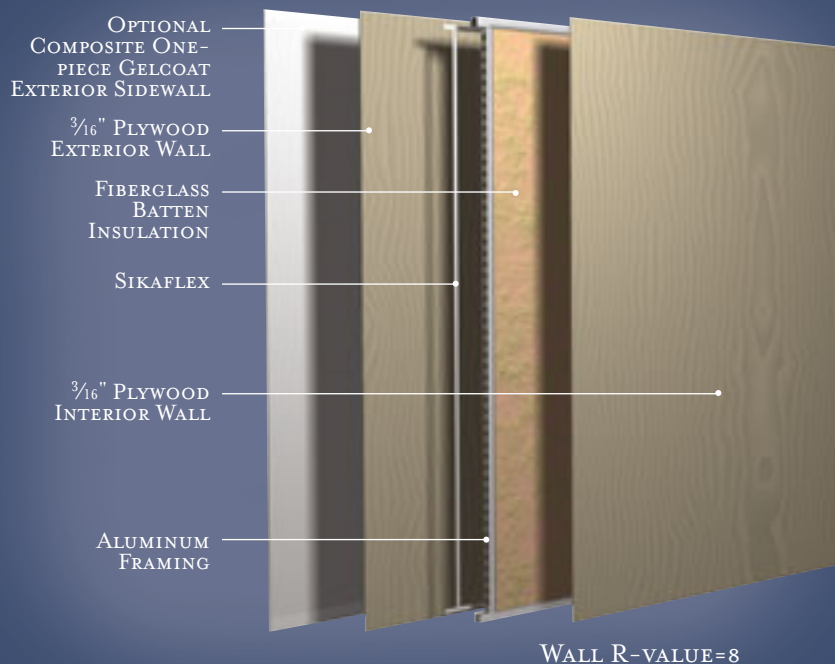
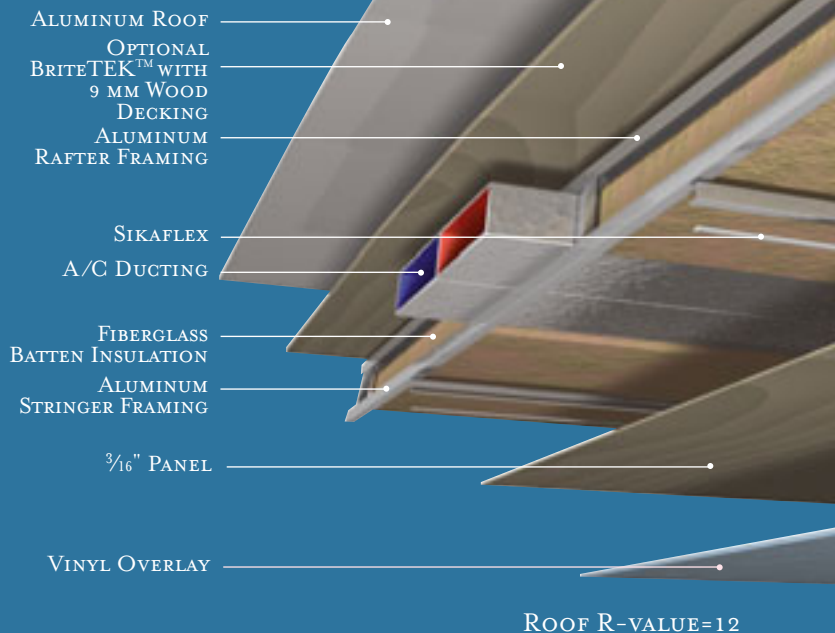


#### 16" ON-CENTER FRAMING

*Just like a fine site-built residential home, your Newmar home is framed 16 inches on center, which allows the best placement of outlets, switches and other components.*

#### SIKAFLEX®

*Sikaflex elastic adhesive is one of the strongest adhesives on the market today. It also serves as a sealant against air and water. And it helps dampen both sound and vibration.*



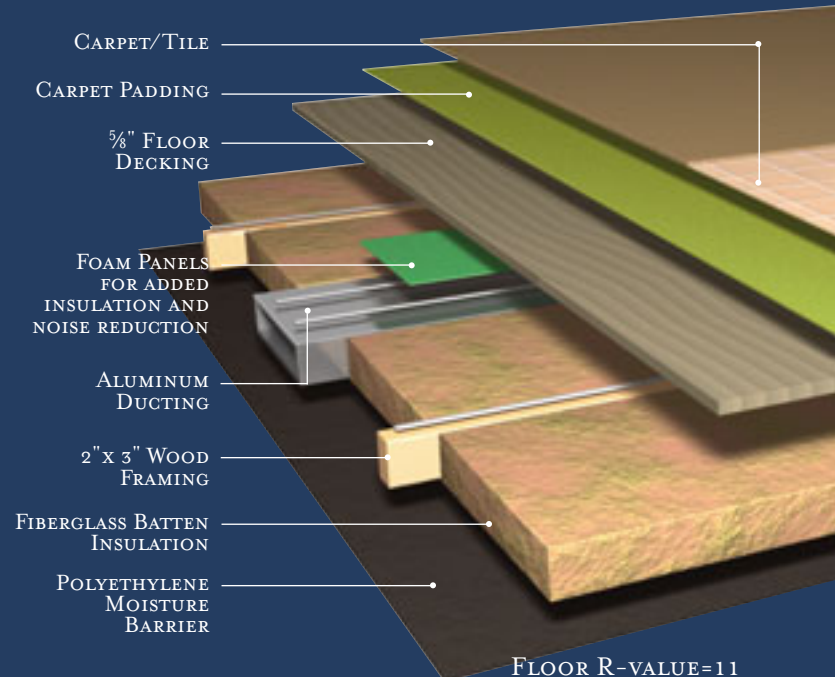
## TOTAL COMFORT™ NEWMAR CENTRAL AIR CONDITIONING

Newmar's Total Comfort Central Air Conditioning system—standard with every Newmar RV—is just like those found in most site-built homes. It's actually two separate, fully ducted systems: one to distribute incoming cool air, the other to quickly and effectively remove warm air from every living area.

## NEWMAR FREEDOM WARRANTY™

As proof of our commitment to you, we at Newmar back every American Star Fifth Wheel with our industry-leading two-year limited warranty: The Newmar Freedom Warranty.\* Ask your dealer for details. Coverage this comprehensive is really liberating.

\* Please see a Newmar dealer for a copy of the complete terms of the Freedom Warranty.





# INTERIOR & EXTERIOR COLOR OPTIONS



Oak (Standard)



Maple Cream



Ericsburg Cherry

*Upper cabinet doors shown. Real woods will have variations in grain and color. Natural wood products will darken over time.*



PALM SPRING



BLUE SPRAY



SUNGOLD



WOODROSE



PALM SPRING



BLUE SPRAY



SUNGOLD



# FEATURES & SPECIFICATIONS

## STANDARD FEATURES

### AIR CONDITIONING & HEATING

- 13.5 M Brisk Air Central Air Conditioner
- Two 30 Lb. LP Gas Bottles with Automatic Regulator
- LP Furnace with In-Floor Ducted Heat
- LP Leak Detector

### APPLIANCES & ACCESSORIES

- Bi-fold Range Cover
- Hardwood Raised-Panel Refrigerator Front
- Range Hood with Light & Fan
- Cable TV Connection with RG 6 Coax
- Dometic® 2852 Refrigerator, 8 Cu. Ft.
- 6 Gal. Gas/Electric Water Heater Direct-Spark Ignition
- AM/FM Radio with Cassette
- Three-Burner Range with Oven & Piezo Ignition
- 22" Microwave Oven
- TV Antenna with Power Booster and Two Interior Jacks

### CABINETS & FURNITURE

- Oak Hardwood Raised-Panel Cabinet Doors
- Flexsteel® Furniture
- Drawers with Metal Guides
- Lifts on Bed Top to Access Storage Area
- Queen Bed — 60" x 75"

### ELECTRICAL FEATURES

- 55 Amp Converter
- 12 Volt Battery
- 110 Volt Exterior Receptacle on Door Side
- 30 Amp Electrical Service

### EXTERIOR FEATURES

- Gelcoated Fiberglass End Caps
- Filon® Fiberglass Exterior Sides
- Seamless Aluminum Roof
- Snaps for Fifth Wheel Jack
- Stabilizer Jacks, 1 Pair
- Power Front Jacks

### INTERIOR FEATURES

- Quilted Bedspread with Reverse Sham and Accent Pillow
- Carpet with Padding
- Vinyl Floor in Kitchen, Foyer and Bathroom Area
- Hardwood/Fabric Fascia on Living-Area Slideout
- Smoke Detector & 5 Bc Fire Extinguisher

- Vinyl-Covered Ceiling Panels
- Mini-Blinds with Lambrequins

### PLUMBING/BATH FEATURES

- Thetford™ Aqua Magic Stool
- Bath Accessories — Towel Bar and Tissue Holder
- Demand Water System with SHURflo® Pump
- Tub/Shower Wall Light
- Monitor Panel
- Sewage Holding-Tank Rinse
- Water-Heater Bypass System
- Tub/Shower Surround with Shower Door

### CONSTRUCTION FEATURES

- Aluminum-Frame Sidewalls & Roof Construction, 16" on Center
- Enclosed Underbelly with Fiberglass Insulation
- Roof R-value Rating: 12
- Sidewall R-value Rating: 8
- Floor R-value Rating: 11

### WINDOWS, AWNINGS & VENTS

- Power Vent in Bathroom with Wall Switch
- Clear Glass Windows
- Triple Entrance-Door Step

### TOWABLE CHASSIS FEATURES

- Shock Absorbers
- 16" Tire with 8-Lug Mounting-Bolt Pattern (Interchangeable with Chevy® & Ford®)

## OPTIONAL FEATURES

### GRAPHICS & DECOR CHOICES

- Exterior Painted Bottom Wrap (5 Lb.)

### APPLIANCES & ACCESSORIES

- 12 Gal. Gas/Electric Water Heater — Direct-Spark Ignition (10 Lb.)
- Sony® Surround Sound System with VCR, DVD Player & Subwoofer (10 Lb.)
- Electric Fireplace on Some Floorplans (56 Lb.)
- 22" Spacesaver Microwave (5 Lb.)
- AM/FM Radio with Cassette, CD Player (8 Lb.)
- Ceiling Fan in Living Room Area (10 Lb.)
- Exterior TV Jack on Door Side
- Satellite Prep — Phone, TV Jack and Receptacle
- Telephone Connection with One Phone Jack in Living Area
- Two-Piece Washer/Dryer with 50 Amp Electrical Service (241 Lb.)

### CABINETS & FURNITURE

- Maple Cream Cabinets
- Ericksburg Cherry Cabinets
- Swivel, Rocker-Recliner (114 Lb.)
- Hide-a-Bed Sofa (62 Lb.)
- Free Standing Dinette (-23 Lb.)

### ELECTRICAL FEATURES

- Battery Disconnect Switch
- 30 Amp Cord Reel (10 Lb.)
- 600 Watt Inverter — for Entertainment Center (10 Lb.)

### EXTERIOR FEATURES

- Exterior Security Lights — One Installed on Each Side

### INTERIOR FEATURES

- Simulated Plank Floor in Kitchen and Foyer Area (30 Lb.)
- 12" Marble-Look Floor Tile in Kitchen and/or Main Bathroom (20 Lb.)
- Day/Night Pleated Shades in Living and Bedroom Area (5 Lb.)
- Lined Drapes with Valances
- Two Sink Covers

### PLUMBING/BATH FEATURES

- Exterior Shower — Located on Off Door Side
- Fiberglass Tub/Shower for Master Bathroom (75 Lb.)

### CONSTRUCTION FEATURES

- BriteTEK™ Roof with 9 MM Decking (237 Lb.)
- Gelcoated Fiberglass Exterior Sides
- Polar Pak R19 Fiberglass Insulation in Roof and Floor (5 Lb.)
- Rear Ladder

### WINDOWS, AWNINGS & VENTS

- Carefree® Fiesta Side Awning (104 Lb.)
- Double-Pane, Tinted Safety-Glass Windows (110 Lb.)
- Create-A-Breeze Vent with Automatic Lift in Kitchen (5 Lb.)
- Skylight in Bathroom — Located Above Tub/Shower

### TOWABLE CHASSIS FEATURES

- Easy-Lube Equalizers (1 Lb.)
- Spare Tire Range, Mounted in Underbelly with Lift Kit (92 Lb.)
- MOR/ryde® Rubber Equalizers (73 Lb.)

### AIR CONDITIONING & HEATING

- 13.5M Penguin Air Conditioning, ILO Std.
- 15M Penguin Air Conditioning, ILO Std.
- 15M Brisk Air Conditioning, ILO Std.

## FLOORPLAN SPECIFICATIONS

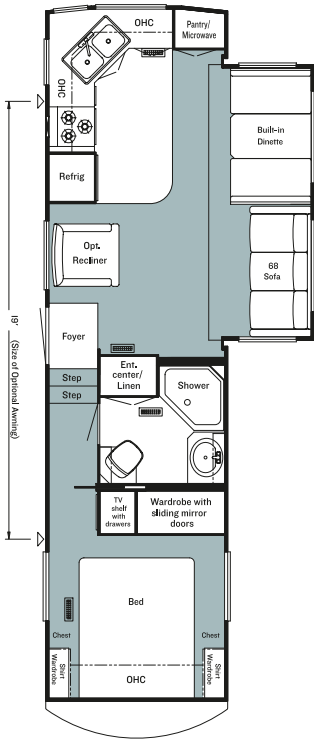
FLOORPLAN	TIRE SIZE	GAWR	GVWR	APP. LENGTH	APP. HEIGHT	WIDTH	APP. DRY WEIGHT	APP. HITCH WEIGHT	FRESH WATER	GREY WATER	SEWAGE CAP.	APP. HITCH HEIGHT	HEAT CAP.
30BKCL	235/85R16-E	5,200 lb.	12,400 lb.	32' 04"	13' 01"	96"	9,470 lb.	1,792 lb.	42 gal.	42 gal.	42 gal.	47"	35,000 Btu
31DCFB	235/85R16-E	5,200 lb.	12,400 lb.	34' 01"	13' 01"	96"	10,250 lb.	1,743 lb.	42 gal.	42 gal.	42 gal.	47"	35,000 Btu
31RLRE	235/85R16-E	5,200 lb.	12,400 lb.	33' 08"	13' 01"	96"	9,630 lb.	1,630 lb.	42 gal.	42 gal.	42 gal.	47"	35,000 Btu
32RKWD	235/85R16-E	5,200 lb.	12,400 lb.	34' 11"	13' 01"	96"	10,055 lb.	1,740 lb.	42 gal.	42 gal.	42 gal.	47"	35,000 Btu
32RLKS	235/85R16-E	5,200 lb.	12,400 lb.	34' 03"	13' 01"	96"	10,315 lb.	1,850 lb.	42 gal.	42 gal.	42 gal.	47"	35,000 Btu
33LKSA	235/85R16-G	6,000 lb.	14,000 lb.	36' 00"	13' 01"	96"	11,137 lb.	2,005 lb.	42 gal.	42 gal.	42 gal.	47"	35,000 Btu
34BLSK	235/85R16-G	6,000 lb.	14,000 lb.	36' 07"	13' 01"	96"	10,740 lb.	1,926 lb.	42 gal.	42 gal.	42 gal.	47"	35,000 Btu
35DBDB	235/85R16-G	6,000 lb.	14,000 lb.	38' 02"	13' 01"	96"	10,885 lb.	1,960 lb.	42 gal.	42 gal.	84 gal.	47"	35,000 Btu

In keeping with our tradition of bringing our customers the highest-quality products in the industry, Newmar works with the following manufacturer to supply components for our vehicles.

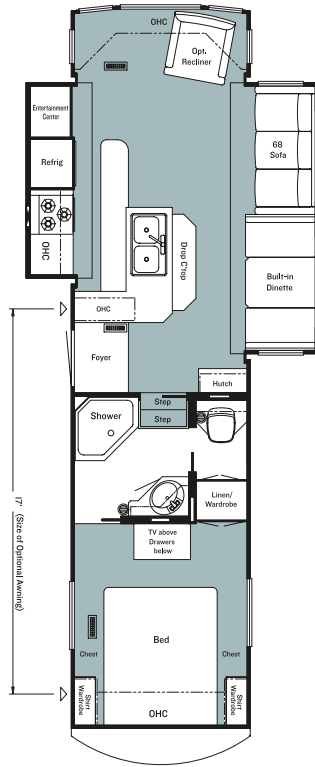




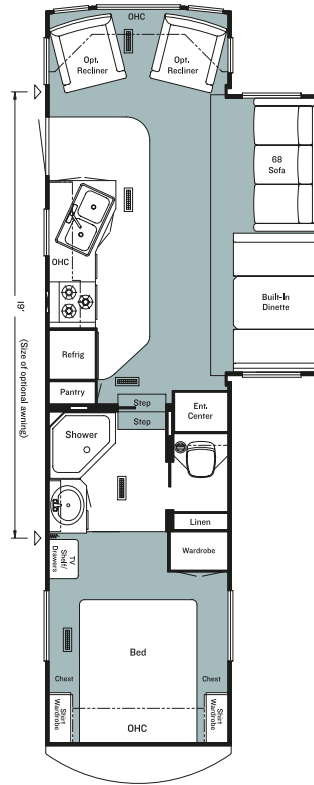
# FLOORPLANS



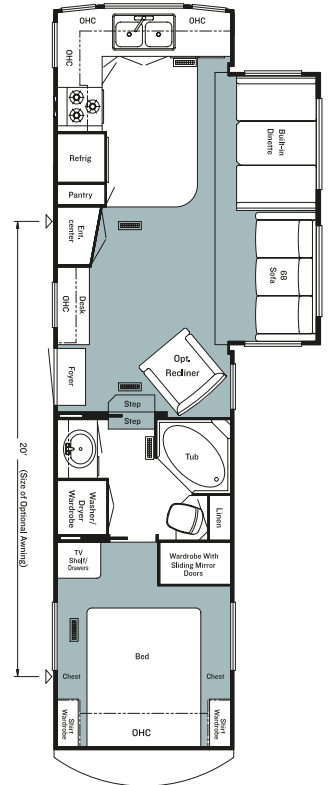
**ASFW 30BKCL**  
Options: K925, M727



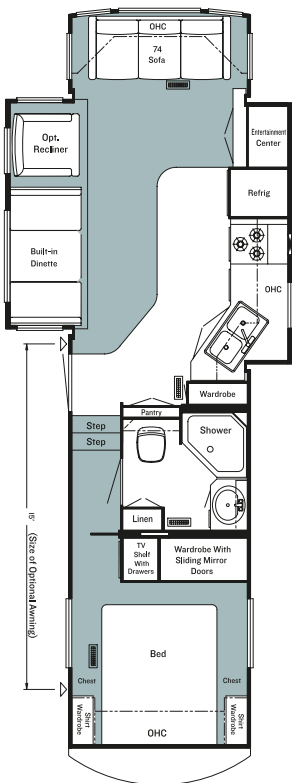
**ASFW 31DCFB**  
Options: K930, M730



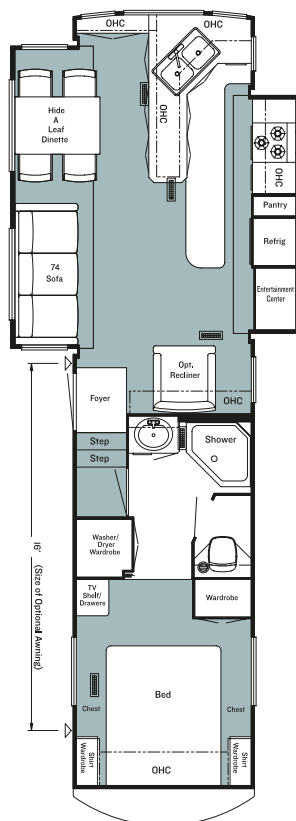
**ASFW 31RLRE**  
Options: K928, M735, M737



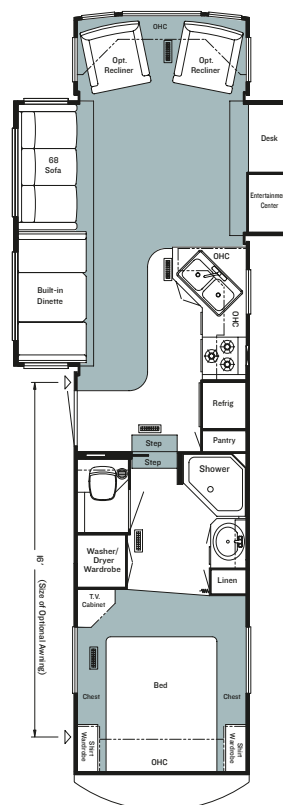
**ASFW 32RKWD**  
Options: K928, MI60, MI62, PI83



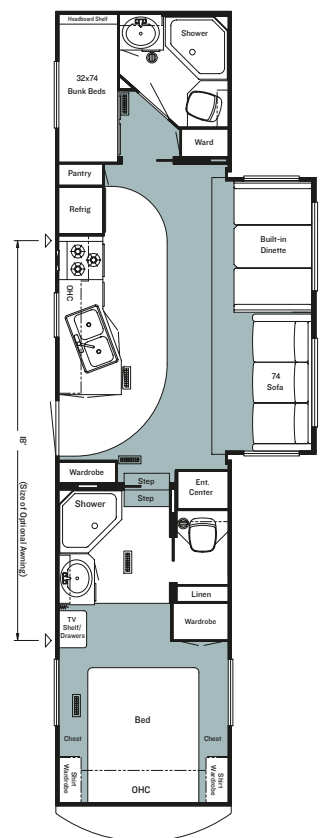
**ASFW 32RLKS**  
Options: K925, M727



**ASFW 33LKSA**  
Options: K928, MI63, MI64



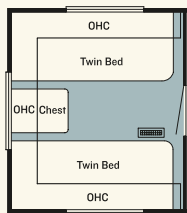
**ASFW 34BLSK**  
Options: M731, M750



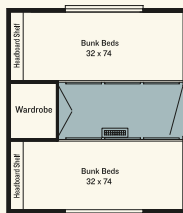
**ASFW 35DBDB**  
Options: K510, K570, K650, K660, K680, K750, K928, M732, M734



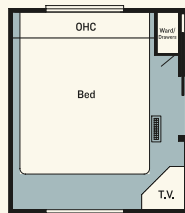
# FLOORPLAN OPTIONS



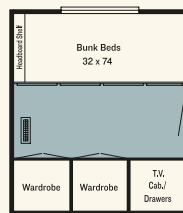
**K510**  
**REAR TWIN BEDS**  
ASFW: 35DBDB



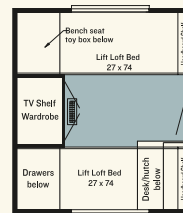
**K570**  
**REAR BUNKHOUSE**  
ASFW: 35DBDB



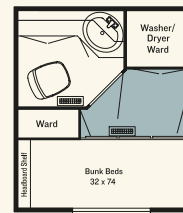
**K650**  
**REAR BEDROOM**  
ASFW: 35DBDB



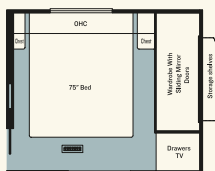
**K660**  
**REAR BUNKHOUSE WARDROBE**  
ASFW: 35DBDB



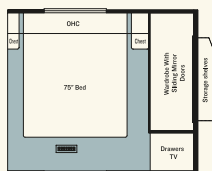
**K680**  
**REAR LOFT**  
ASFW: 35DBDB



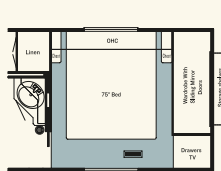
**K750**  
**REAR BED/BATH**  
ASFW: 35DBDB



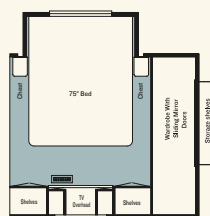
**K925**  
**HONEYMOON SUITE**  
ASFW: 30BKCL, 32RLKS



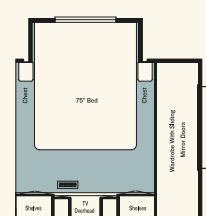
**K928**  
**HONEYMOON SUITE**  
ASFW: 31RLRE, 32RKWD, 33LKSA, 35DBDB



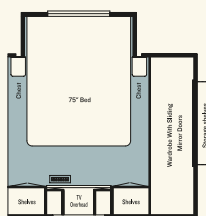
**K930**  
**HONEYMOON SUITE**  
ASFW: 31DCFB



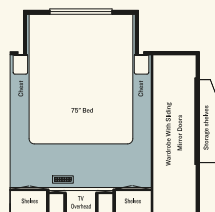
**MI60**  
**CABOVER SLIDEOUT WITH VANITY CENTER**  
ASFW: 32RKWD



**MI62**  
**CABOVER SLIDEOUT WITH VANITY/DRESSER CENTER**  
ASFW: 32RKWD



**MI63**  
**CABOVER SLIDEOUT WITH VANITY CENTER**  
ASFW: 33LKSA



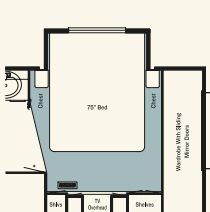
**MI64**  
**CABOVER SLIDEOUT WITH VANITY/DRESSER CENTER**  
ASFW: 33LKSA



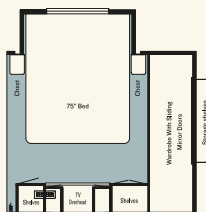
**M727**  
**CABOVER SLIDEOUT WITH VANITY/DRESSER CENTER**  
ASFW: 30BKCL, 32RLKS



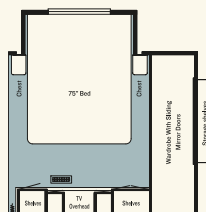
**M730**  
**CABOVER SLIDEOUT WITH VANITY/DRESSER CENTER**  
ASFW: 31DCFB



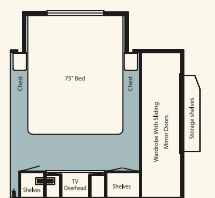
**M731**  
**CABOVER SLIDEOUT WITH VANITY/DRESSER CENTER**  
ASFW: 34BLSK



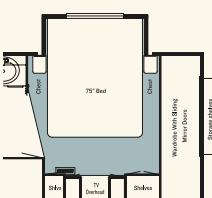
**M732**  
**CABOVER SLIDEOUT WITH VANITY CENTER**  
ASFW: 35DBDB



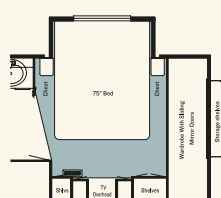
**M734**  
**CABOVER SLIDEOUT WITH VANITY/DRESSER CENTER**  
ASFW: 35DBDB



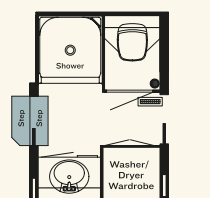
**M735**  
**CABOVER SLIDEOUT WITH VANITY CENTER**  
ASFW: 31RLRE



**M737**  
**CABOVER SLIDEOUT WITH VANITY/DRESSER CENTER**  
ASFW: 31RLRE



**M750**  
**CABOVER SLIDEOUT WITH VANITY CENTER**  
ASFW: 34BLSK



**PI83**  
**ENCLOSED STOOL ROOM WITH STRAIGHT SHOWER**  
ASFW: 32RKWD

## NEWMARCORP.COM

Visit our Web site. Here you'll easily access the most up-to-date Newmar product information, model specifications, floorplans and options. You'll also learn more about who we are, how we work and what we believe in. Become a registered user—for free—and you'll also get access to the latest event data, technical and service tips and the location of your nearest Newmar dealer. This isn't just our site—it's yours.

## THE NEWMAR FACTORY TOUR

We'd love to have you visit our state-of-the-art production facility in Nappanee, Indiana. Factory tours are given Monday through Friday at 10 a.m. and 1 p.m. (Indiana time). Pre-registration is not required—but is helpful, since tour-group sizes may be limited from time to time. Please arrive 15 minutes before the hour and check in at the tour area that is located in Building Nine on Cheyenne Street. No open-toed sandals can be worn, and children under the age of eight are not allowed to take the tour.

For more information or to pre-register, please call 800.860.0086.





NEWMAR QUALITY: A WAY OF LIFE

NEWMAR CORPORATION  
355 N DELAWARE ST  
PO BOX 30  
NAPPANEE IN 46550-0030  
574-773-7791 Fax 574-773-2895  
[www.newmarcorp.com](http://www.newmarcorp.com)

Your Official American Star Dealer: