

2005 | SCOTTSDALE CLASS A *by Newmar*



ADVENTURE BECKONS.
PURSUE IT BOLDLY

THE SCOTTSDALE GAS-POWERED
MOTORHOME WAS DESIGNED SPECIFICALLY
FOR PEOPLE LIKE YOU—PEOPLE WHO SEEK
OUT ADVENTURE AND ROLL WITH IT.
IN SHORT, IT'S AS BOLD AS YOU ARE.

THAT'S APPARENT THE MOMENT YOU
LAY EYES ON IT. SCOTTSDALE'S EXTERIOR
STYLING IS SLEEK AND ENERGETIC. INSIDE,
ITS STANDARD FEATURES SET A WHOLE NEW
STANDARD FOR BALANCING COMFORT
AND PRACTICALITY. RESULT? SUPERIOR
TRAVEL LIVING... ENHANCED IN WAYS YOU
MIGHT NOT EVER HAVE IMAGINED.

POWER. PERFORMANCE. AND
EXCEPTIONAL COMFORT. SCOTTSDALE'S
GOT IT ALL. WHICH SETS YOU FREE
TO LIVE AS BOLDLY AS YOU DARE.





Slideout

*Decorative
Molding*

Lighting

*Window
Treatments*

COMFORT KNOWS NO BOUNDS HERE

Slideout

Thanks to Newmar's pioneering development of RV slideouts, Scottsdale's interior living space can be expanded quickly and smoothly to enhance your comfort.

Lighting

Dramatic yet tastefully styled wall sconces put light where you need it—and lend ambiance to the main living area.

Decorative Molding

Recalling the rich architectural detail of fine traditional homes, the trimwork surrounding the slideout opening features decorative molding accents.

Window Treatments

Elegant lambrequins and pleated day/night shades are standard throughout the Scottsdale coach.



3456/Night Sky



LEFT: This plush swivel/recliner chair is positioned next to a wall-mounted flip-up side table.

ABOVE: In the mood for some relaxing entertainment? Settle back in the living room and enjoy your standard Sony® flatscreen color TV mounted in an overhead cabinet. The TV is available with optional Surround Sound.

BELOW: This Scottsdale floorplan has a sofa with a storage area for a collapsible dinette table. This unique feature creates a boundary-less living area.



3002/Atlantis Blue

Innovative Concept #34:

Sofa with Stowable Dinette

1.



2.



3.



4.



Microwave Convenience

Three-Burner Range

Countertop Space

SNACK OR FEAST...JUST ENJOY

Cabinet Space

Three-Burner Range

The three-burner range and oven have reliable piezo-ignition, sealed burners for easy cleanup and a Corian® bi-fold cover that closes flush with the countertop.

Microwave Convenience

This standard 22-inch Spacemaker® microwave increases your cooking options, letting you prepare anything from a small snack to a large dinner. And it's thoughtfully mounted up off the countertop, in the overhead cabinets.

Countertop Space

The Scottsdale kitchen provides generously sized Corian countertops to let you concoct your most complex dishes.

Cabinet Space

Whatever you need to satisfy your hunger, you've got all the cabinet space you need—and then some—to bring it along. These cabinets feature attractive oak hardwood raised-panel doors and smooth-gliding drawers.



3002/Atlantis Blue

ABOVE: The eight-cubic-foot Dometic® refrigerator has a hardwood raised-panel front for that classic built-in look. And the large pantry features pullout shelving that lets you get at stored items easily.

RIGHT: The hidden-leaf dinette table, standard on most floorplans, is complemented by two plushly upholstered freestanding sidechairs and two folding chairs, creating a pleasant setting for meals, conversation or gaming. Throughout the main living area, Scottsdale's textured and patterned carpet lends added comfort and beauty.

BELOW: The undermounted sink features flush sink covers and a single-lever faucet. A flip-up countertop extension is provided by the sink to increase your working space.



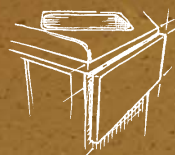
3671/Butterscotch



3456/Night Sky

Innovative Concept #23:
Flip-up Countertop

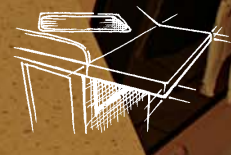
1.



2.



3.





Reading Lights

Restful Bedding

Generous Storage

BOLD LIVING REQUIRES SWEET REST



Restful Bedding

The Scottsdale bedroom offers a queen-sized bed enhanced with a quilted headboard and bedspread with a reverse sham and an accent pillow. The bed lifts up on its wide base, giving you access to a spacious storage area underneath.

Reading Lights

Individual reading lights are mounted above the headboard at each side of the bed.

Generous Storage

Lots of drawers and cabinets are provided to let you bring along all your favorite clothing, bedding and personal items. As in the kitchen, these cabinets feature oak hardwood raised-panel doors.



3257/Willow Green

ABOVE: This deep wardrobe—with room-expanding mirrored doors—lets you easily store larger, bulkier clothing. It also offers conveniently compartmentalized shelving for shoes and smaller items.

RIGHT: In addition to offering plenty of cabinet space, the bathroom features an easy-cleaning laminate countertop, a porcelain sink with a single-lever faucet and a tub/shower surround with a shower door.

BELOW: A well-lighted nook is provided in the sidewall cabinetry. And the bedroom's standard color TV is mounted in its own built-in shelf, so you can watch from the comfort of bed.



3671/Butterscotch



3456/Night Sky



A. The Scottsdale cab is truly the "Driver's Command Center." All dashboard gauges and controls are well within view and reach, including controls for the optional electric or hydraulic jacks.

B. Optional lumbar support and six-way power adjustment keep you comfortable mile after mile in the Ultraleather driver's seat.

C. Built into the dash is this standard Sony®AM/FM radio/CD player with optional XM Satellite Radio capability.





D
E



F



F

- D. Basement storage is expansive in the 2005 Scottsdale. It also comes with interior lights for easier loading and unloading, especially at night.
- E. A handy cooler is located in the entrance step.
- F. The rearview exterior mirrors feature remote control and defrost.
- G. Scottsdale's 4.8 kW Guardian® Generator gives you all the power you need—and then some—to keep the good times rolling.

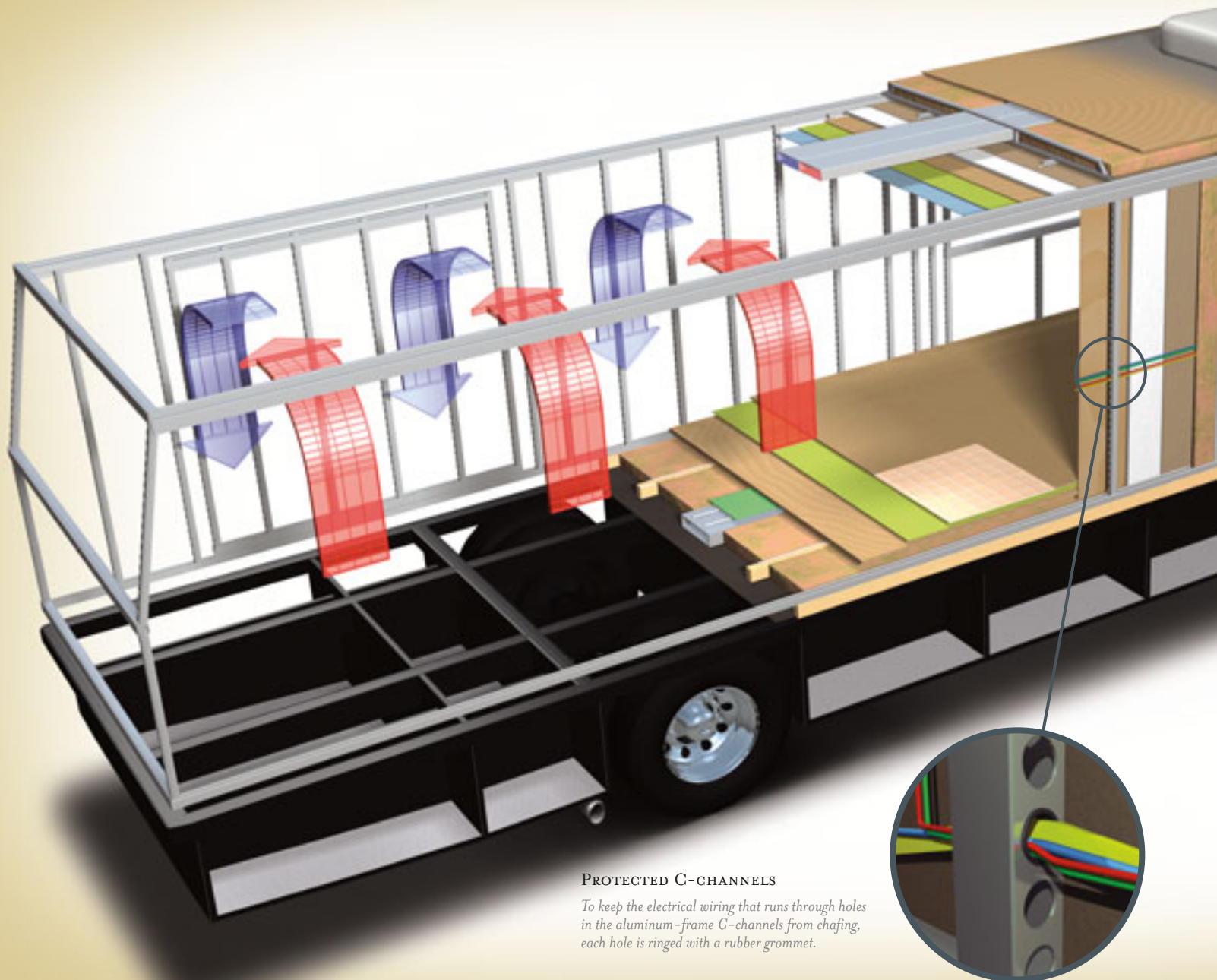


G

THE NEWMAR KOUNTRY KLUB

As a Newmar owner, you qualify for membership in the Newmar Kountry Klub. Join your local chapter, and just look at the perks you'll enjoy: friendship, fun and adventure with other Newmar owners • rallies and caravans • special RV show events • discounts on RV services • a free monthly Klub magazine • Klub merchandise. And that's just for starters.

Join today. Call 877.639.5582, toll-free, or visit the Kountry Klub section of newmarcorp.com.



PROTECTED C-CHANNELS

To keep the electrical wiring that runs through holes in the aluminum-frame C-channels from chafing, each hole is ringed with a rubber grommet.

NOTHING ENDURES LIKE A NEWMAR

Your Scottsdale Gas-Powered Motorhome is built to go the distance. And for good reason: It's assembled on the same production line, to the same exacting standards and with the same meticulous care, as all Newmar motorhomes. It also reflects Newmar's long history of product innovation and industry "firsts." For us, this is a matter of pride. And tradition. Of taking personal responsibility and building a product we ourselves would want to own.

For the third year in a row, Newmar has won RVDA's Quality Circle Award, given in accordance with the results of an annual RV dealer satisfaction survey. The survey asks RV dealers to evaluate manufacturers' performance in four major categories: Sales Support, Product Competitiveness, Service and Warranty Support. We are honored to receive this award, of course. It tells us that our efforts on behalf of our dealers and customers are appreciated. And we will continue working to keep their trust.



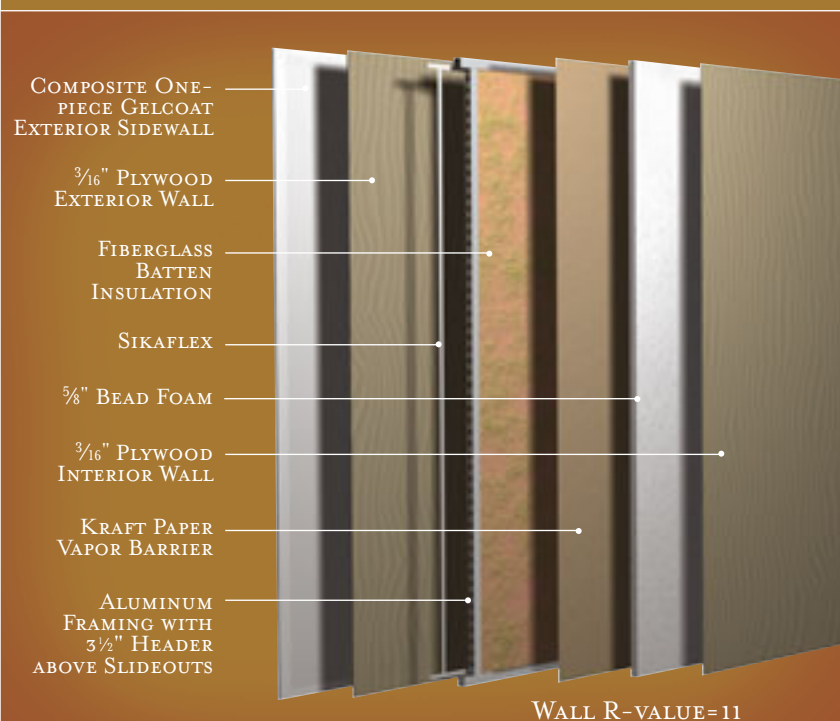
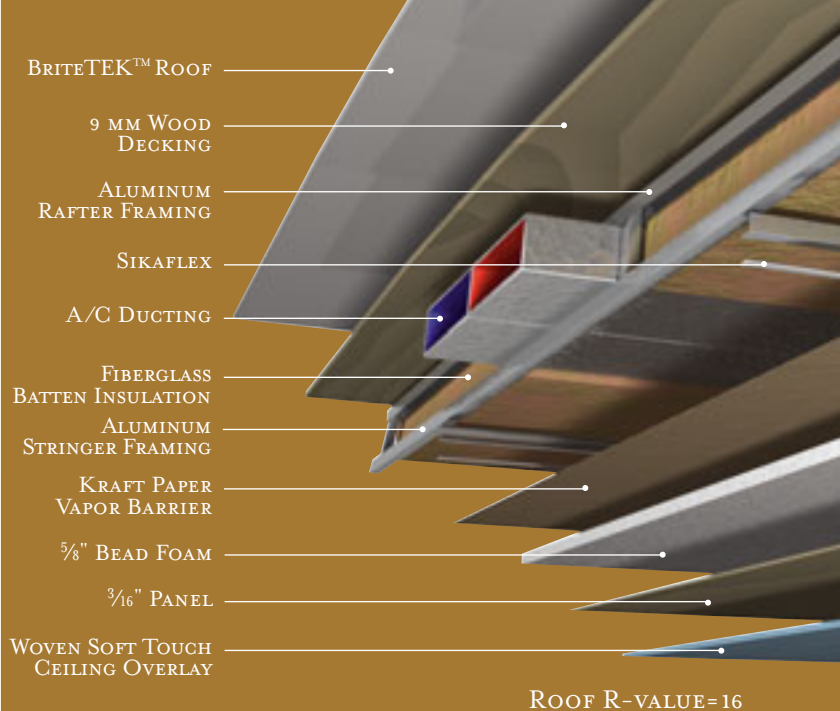


16" ON-CENTER FRAMING

Just like a fine site-built residential home, your Newmar home is framed 16 inches on center, which allows the best placement of outlets, switches and other components.

SIKAFLEX®

Sikaflex elastic adhesive is one of the strongest adhesives on the market today. It also serves as a sealant against air and water. And it helps dampen both sound and vibration.



TOTAL COMFORT™ NEWMAR CENTRAL AIR CONDITIONING

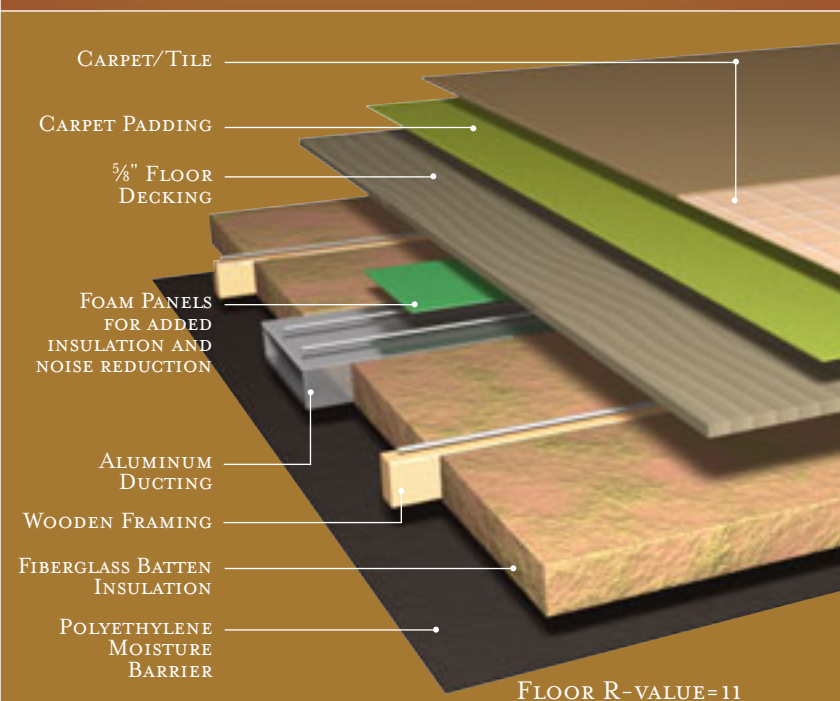


Newmar's Total Comfort Central Air Conditioning system—standard with every Newmar RV—is just like those found in most site-built homes. It's actually two separate, fully ducted systems: one to distribute incoming cool air, the other to quickly and effectively remove warm air from every living area.

NEWMAR FREEDOM WARRANTY™

As proof of our commitment to you, we at Newmar back every Scottsdale Gas-Powered Motorhome we make with our industry-leading three-year/36,000-mile limited warranty: The Newmar Freedom Warranty.* Ask your dealer for details. Coverage this comprehensive is really liberating.

*Please see a Newmar dealer for a copy of the complete terms of the Freedom Warranty.



INTERIOR & EXTERIOR COLOR OPTIONS



BUTTERSCOTCH



ATLANTIS BLUE



NIGHT SKY



WILLOW GREEN

*Upper cabinet doors shown. Real woods will have variations in grain and color.
Natural wood products will darken over time.*



*Oak
(standard)*



Maple Cream



Ericsbury Cherry



BUTTERSCOTCH



ATLANTIS BLUE



WILLOW GREEN

FEATURES

STANDARD FEATURES

MOTORIZED CHASSIS FEATURES

- Ford F-53 Chassis
- Cruise Control
- Tilt Steering Wheel
- Stainless Steel Wheel Simulators

AIR CONDITIONING & HEATING

- 15M Brisk Air Central Air Conditioner
- LP Furnace with In-Floor Ducted Heat
- Dash Heater & High-Output Air Conditioner
- LP Leak Detector

APPLIANCES & ACCESSORIES

- Three-Burner Recessed Range with Glass Oven Door & Piezo Ignition
- Corian® Range Cover of Matching Countertop Material
- Dometic® 2862 Refrigerator, 8 Cu. Ft.
- Hardwood Raised-Panel Refrigerator Front
- Spacemaker® Microwave Oven
- 6 Gal. Gas/Electric Water Heater — Direct-Spark Ignition
- Sony® Flatscreen Color TV in Living Area
- Sony AM/FM Dash Radio with CD player
- Color TV in Bedroom
- Sony DVD Player
- TV Antenna with Power Booster, One Exterior & Two Interior Jacks
- Satellite Prep — Phone, TV Jack and Receptacle
- Exterior TV Jack on Door Side
- Cable TV Connection with RG 6 Coax
- Telephone Connection with Phone Jacks in Living and Dash Area
- Rearview Monitor Prep
- Cooler Located in Entrance-Step Compartment
- Carbon Monoxide Detector

CABINETS & FURNITURE

- Oak Hardwood Raised-Panel Cabinet Doors
- Hidden-Leaf Dinette Table with Four Chairs (Two Fixed, Two Folding)— Standard in Most Floorplans
- Lifts on Bed Top to Access Storage Area
- Corian Countertop in Kitchen with Undermounted Acrylic Sink and Flush Sink Covers
- Drawers with Metal Guides
- Flexsteel® Furniture
- Laminate Countertop with Porcelain Bowl in Bathroom
- Swivel & Recline Driver/Passenger Seats

ELECTRICAL FEATURES

- Two 12 Volt House Batteries on Pullout Tray
- 110 Volt and 12 Volt Lighting to Main Slideout
- 110 Volt Exterior Receptacle on Door Side
- 30 Amp Electrical Service
- Lights in Exterior Storage Compartments, Controlled by Interior Master Switch
- Lights in Wardrobes
- Battery Disconnect For House Batteries
- Exterior Security Lights, One Installed on Each Side
- Emergency Engine Start Switch
- 4.8 kW Guardian® Generator with One Remote Switch
- 55 Amp Converter
- 5 Watt Solar Panel to Charge Chassis Battery

EXTERIOR FEATURES

- Convex Exterior Mirrors with Remote Control and Defrost
- Hitch for Towing Car, With Two Extra 14-Gauge Wires for Customer's Use — Class-3, 5000# Rating
- Mudflaps
- Undercoating

INTERIOR FEATURES

- Woven Soft-Touch Ceiling
- Day/Night Pleated Window Shades & Lambrequins
- Hardwood/Fabric Fascia on Living Area and Bedroom Slideout
- Smoke Detector & 10 Bc Fire Extinguisher
- Vinyl Floor in Kitchen and Bathroom Areas
- Quilted Bedspread with Reverse Sham and Pillow

PLUMBING & BATH FEATURES

- Demand Water System with SHURflo® Pump
- Sewage-Hose Holder, Easy-Access Flip-Down Tray
- SeaLand™ 500+ China Stool
- Monitor Panel
- Sewage Holding-Tank Rinse
- Water-Heater Bypass System
- Tub/Shower Surround with Shower Door

CONSTRUCTION FEATURES

- BriteTEK™ Roof with 9 MM Decking
- Gelcoated Fiberglass Exterior Sides
- 5/8" Foam Insulation Laminated in Sidewalls & Ceiling
- Aluminum-Frame Sidewalls & Roof Construction, 16" on Center
- Roof R-value Rating: 16
- Sidewall R-value Rating: 11
- Floor R-value Rating: 11

WINDOWS, AWNINGS & VENTS

- Automatic Entrance-Door Step
- Power Vent with Wall Switch in Bathroom
- Tinted Safety-Glass Windows
- Fan-Tastic® Vent with Rain Sensor in Kitchen Area
- Lighted Acrylic Assist Handle at Entrance Door
- Skylight in Bathroom, Located Above Tub/Shower
- Cockpit Overhead Ventilation System

OPTIONAL FEATURES

MOTORIZED CHASSIS FEATURES

- Workhorse™ W-22 Chassis

APPLIANCES & ACCESSORIES

- Dometic® 1062 Refrigerator, 10 Cu. Ft.
- Compact Washer/Dryer
- 10 Gal. Gas/Electric Water Heater — Direct-Spark Ignition
- Sony® Surround Sound System with VCR, DVD Player and Subwoofer (10 Lb.)
- XM Satellite Radio Capability

CABINETS & FURNITURE

- Maple Cream Cabinets
- Ericsburg Cherry Cabinets
- Ultraleather Driver/Passenger Seats with Six-Way Power, Power Lumbar and Ergo-Flex Arms (50 Lb.)
- King Bed

ELECTRICAL FEATURES

- 600 Watt Inverter for Living Area or Bedroom TV (10 Lb.)

EXTERIOR FEATURES

- Rear Protective Tow Guard with Stainless Steel Newmar Letters

INTERIOR FEATURES

- Simulated Plank Floor in Kitchen and Bath Area (71 Lb.)
- 12" Marble-Look Floor Tile in Kitchen and Bath Area (54 Lb.)
- Sun Shades on Driver and Passenger Side Windows

PLUMBING & BATH FEATURES

- Exterior Shower, Located on Off Door Side

WINDOWS, AWNINGS & VENTS

- Double-Pane, Tinted Safety-Glass Windows
- Driver's-Side Door with Power Window (50 Lb.)

SPECIFICATIONS

FLOORPLAN SPECIFICATIONS

FLOORPLAN	APP. OVERALL LENGTH	WIDTH	APP. OVERALL HEIGHT	INTERIOR WIDTH	INTERIOR HEIGHT	GREY	SEWAGE	WATER	LP	FURNACE	WATER HEATER
SDCA 3002	30' 05"	100"	12' 02"	94"	78"	50 gal.	40 gal.	75 gal.	25 gal.	35,000 Btu	6 gal.
SDCA 3201	32' 11"	100"	12' 02"	94"	78"	50 gal.	40 gal.	75 gal.	25 gal.	35,000 Btu	6 gal.
SDCA 3257	33' 04"	100"	12' 02"	94"	78"	50 gal.	40 gal.	75 gal.	25 gal.	35,000 Btu	6 gal.
SDCA 3456	35' 00"	100"	12' 02"	94"	78"	50 gal.	40 gal.	75 gal.	25 gal.	35,000 Btu	6 gal.
SDCA 3457	35' 00"	100"	12' 02"	94"	78"	50 gal.	40 gal.	75 gal.	25 gal.	35,000 Btu	6 gal.
SDCA 3601	37' 04"	100"	12' 02"	94"	78"	50 gal.	40 gal.	75 gal.	25 gal.	42,000 Btu	6 gal.
SDCA 3602	37' 04"	100"	12' 02"	94"	78"	50 gal.	40 gal.	75 gal.	25 gal.	42,000 Btu	6 gal.
SDCA 3670	37' 04"	100"	12' 02"	94"	78"	50 gal.	40 gal.	75 gal.	25 gal.	42,000 Btu	6 gal.
SDCA 3671	37' 04"	100"	12' 02"	94"	78"	50 gal.	40 gal.	75 gal.	25 gal.	42,000 Btu	6 gal.

FORD CHASSIS INFORMATION

FLOORPLAN	ENGINE HP	AXLE RATIO	FUEL CAP.	WHEEL BASE	*FRONT GAWR	*REAR GAWR	*GVWR	*GCWR	APP. UVW	APP. NCC
SDCA 3002	310	5.38	75 gal.	178"	7,500 lb.	14,500 lb.	22,000 lb.	26,000 lb.	16,702 lb.	5,298 lb.
SDCA 3201	310	5.38	75 gal.	200"	7,500 lb.	14,500 lb.	22,000 lb.	26,000 lb.	17,127 lb.	4,873 lb.
SDCA 3257	310	5.38	75 gal.	200"	7,500 lb.	14,500 lb.	22,000 lb.	26,000 lb.	16,643 lb.	5,357 lb.
SDCA 3456	310	5.38	75 gal.	216"	7,500 lb.	14,500 lb.	22,000 lb.	26,000 lb.	17,447 lb.	4,553 lb.
SDCA 3457	310	5.38	75 gal.	216"	7,500 lb.	14,500 lb.	22,000 lb.	26,000 lb.	17,847 lb.	4,153 lb.
SDCA 3601	310	5.38	75 gal.	228"	7,500 lb.	14,500 lb.	22,000 lb.	26,000 lb.	18,150 lb.	3,850 lb.
SDCA 3602	310	5.38	75 gal.	228"	7,500 lb.	14,500 lb.	22,000 lb.	26,000 lb.	18,132 lb.	3,868 lb.
SDCA 3670	310	5.38	75 gal.	228"	7,500 lb.	14,500 lb.	22,000 lb.	26,000 lb.	18,132 lb.	3,868 lb.
SDCA 3671	310	5.38	75 gal.	228"	7,500 lb.	14,500 lb.	22,000 lb.	26,000 lb.	18,945 lb.	3,055 lb.

WORKHORSE™ CHASSIS INFORMATION

FLOORPLAN	ENGINE HP	AXLE RATIO	FUEL CAP.	WHEELBASE	*FRONT GAWR	*REAR GAWR	*GVWR	*GCWR	APP. UVW	APP. NCC
SDCA 3002	340	4.78	75 gal.	178"	8,000 lb.	14,500 lb.	22,000 lb.	26,000 lb.	16,927 lb.	5,073 lb.
SDCA 3201	340	4.78	75 gal.	200"	8,000 lb.	14,500 lb.	22,000 lb.	26,000 lb.	17,352 lb.	4,648 lb.
SDCA 3257	340	4.78	75 gal.	200"	8,000 lb.	14,500 lb.	22,000 lb.	26,000 lb.	17,195 lb.	4,805 lb.
SDCA 3456	340	4.78	75 gal.	216"	8,000 lb.	14,500 lb.	22,000 lb.	26,000 lb.	17,954 lb.	4,046 lb.
SDCA 3457	340	4.78	75 gal.	216"	8,000 lb.	14,500 lb.	22,000 lb.	26,000 lb.	19,275 lb.	2,725 lb.
SDCA 3601	340	4.78	75 gal.	228"	8,000 lb.	14,500 lb.	22,000 lb.	26,000 lb.	18,405 lb.	3,595 lb.
SDCA 3602	340	4.78	75 gal.	228"	8,000 lb.	14,500 lb.	22,000 lb.	26,000 lb.	18,387 lb.	3,613 lb.
SDCA 3670	340	4.78	75 gal.	228"	8,000 lb.	14,500 lb.	22,000 lb.	26,000 lb.	18,387 lb.	3,613 lb.
SDCA 3671	340	4.78	75 gal.	228"	8,000 lb.	14,500 lb.	22,000 lb.	26,000 lb.	19,265 lb.	2,735 lb.

Lengths, Heights, Widths and Dry Weights are approximate. Weight will vary based on optional equipment added to the above base weight.

GAWR: Gross Axle Weight Rating is the maximum permissible weight for an axle.

GVWR: Gross Vehicle Weight Rating is the maximum permissible weight of a fully loaded motorhome.

GCWR: Gross Combination Weight Rating is the value specified by the manufacturer of the vehicle as the maximum allowable loaded weight of this motorhome and any towed trailer or towed vehicle.

UVW: Unloaded Vehicle Weight is the weight of this motorhome as built at the factory with full fuel, engine oil and coolants. The UVW does not include cargo, fresh water, LP gas or dealer-installed accessories.

NCC: Net Carrying Capacity is the maximum weight of all occupants, including the driver, personal belongings, food, fresh water, waste water, LP gas, tools, tongue weight of towed vehicle, dealer-installed accessories, etc., that can be carried by the motorhome.

* Specifications supplied by chassis manufacturer.

WORKHORSE W22

Workhorse designed the W22 platform for motorhome enthusiasts looking for a full-featured gas chassis with incredible power and performance. The 22,000 lb. chassis is powered by the GM Vortec™ 8100, 8.1 liter engine, with its impressive, industry-best 340 hp and 455 lb. ft. of torque. Mated to this brawny power plant is the Allison 1000 Series™ electronic transmission which delivers superior shift quality and exceptional hill-climbing and towing capabilities. Other advanced features include premium Bilstein® shocks and Stabil-Ride suspension for a superior ride, a lowered engine for reduced engine doghouse and a 50° wheel cut for better maneuvering.

In keeping with our tradition of bringing our customers the highest-quality products in the industry, Newmar works with the following manufacturers to supply components for our vehicles.

SONY

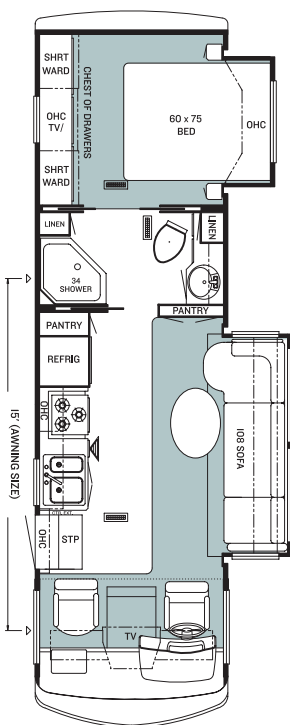
Dometic The Sign of Comfort
www.dometic.com

WORKHORSE
A NEW BREED
www.workhorse.com

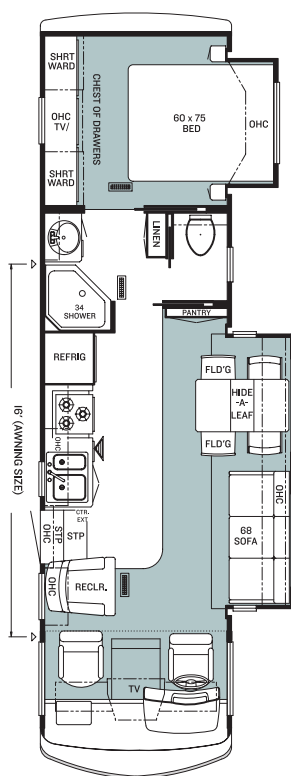
GUARDIAN
www.guardiangenerators.com



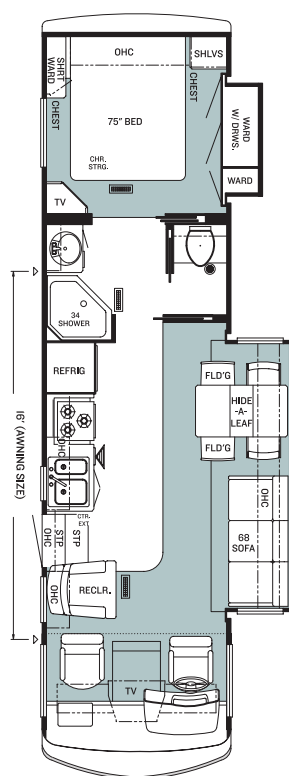
FLOORPLANS



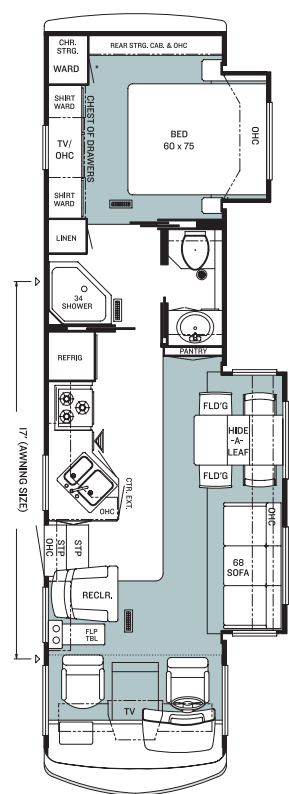
SDCA 3002
Options: K277, K30I, K303



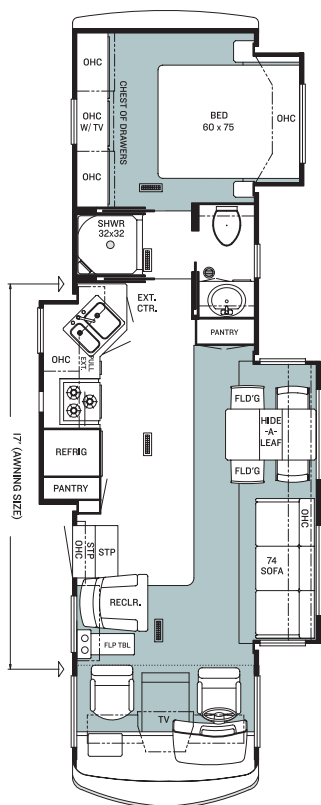
SDCA 320I
Options: K273



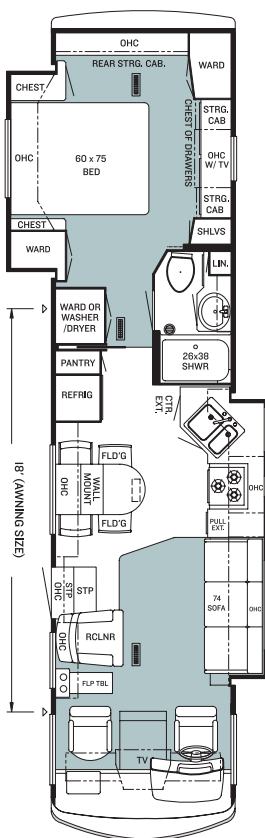
SDCA 3257
Options: K273



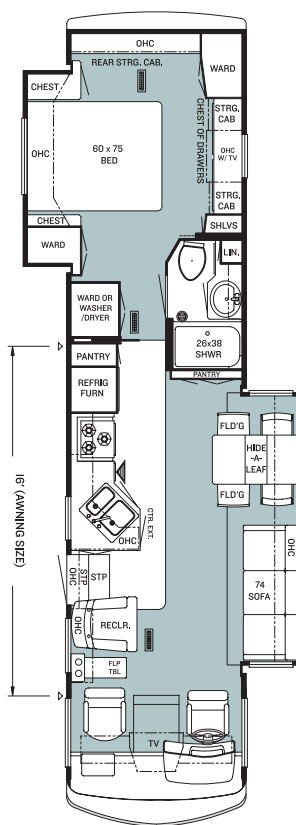
SDCA 3456
Options: K276



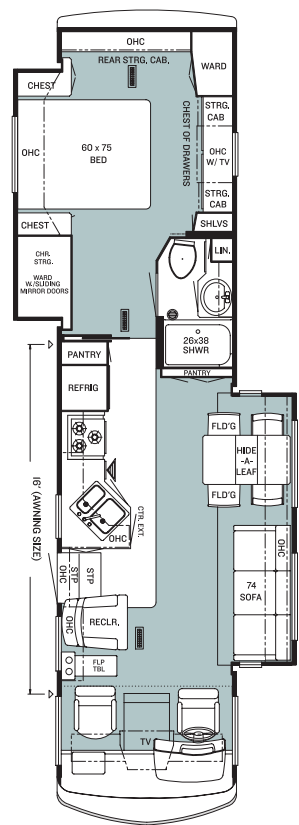
SDCA 3457
Options: K276



SDCA 360I
Options: K630

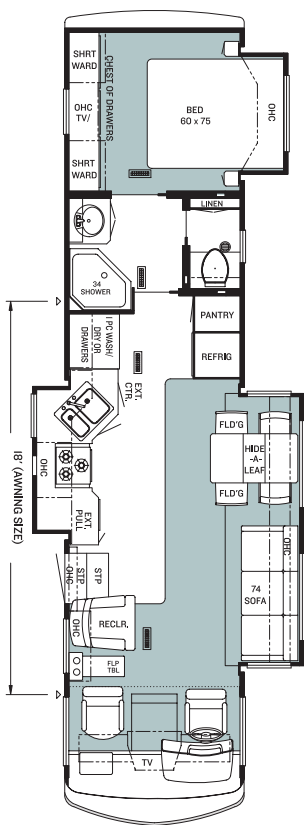


SDCA 3602
Options: K276, K630



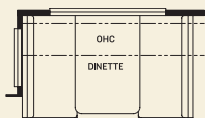
SDCA 3670
Options: K276, K630

FLOORPLAN OPTIONS

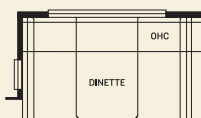


SDCA 3671

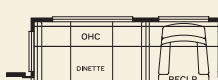
Options: None



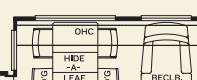
K273
Booth Dinette
SDCA: 3201, 3257



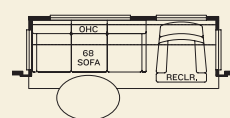
K276
Booth Dinette
SDCA: 3456, 3457,
3602, 3670



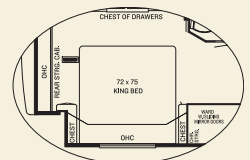
K277
Booth Dinette
with Recliner
SDCA: 3002



K301
Freestanding Dinette
with Recliner
SDCA: 3002



K303
68" Sofa with
Recliner
SDCA: 3002



K630
King Bed
SDCA: 3601, 3602,
3670

NEWMARCORP.COM

Visit our Web site. Here you'll easily access the most up-to-date Newmar product information, model specifications, floorplans and options. You'll also learn more about who we are, how we work and what we believe in. Become a registered user—for free—and you'll also get access to the latest event data, technical and service tips and the location of your nearest Newmar dealer. This isn't just our site—it's yours.

THE NEWMAR FACTORY TOUR

We'd love to have you visit our state-of-the-art production facility in Nappanee, Indiana. Factory tours are given Monday through Friday at 10 a.m. and 1 p.m. (Indiana time). Pre-registration is not required but is helpful, since tour-group sizes may be limited from time to time. Please arrive 15 minutes before the hour and check in at the tour area that is located in Building Nine on Cheyenne Street. No open-toed sandals can be worn, and children under the age of eight are not allowed to take the tour.

For more information or to pre-register, please call 800.860.0086.



NEWMAR QUALITY: A WAY OF LIFE

NEWMAR CORPORATION
355 N DELAWARE ST
PO BOX 30
NAPPANEE IN 46550-0030
574-773-7791 Fax 574-773-2895
www.newmarcorp.com

Your Official Scottsdale Dealer: