

2005 | ESSEX DIESEL PUSHER *by Newmar*



NOT AN ESCAPE AN INDULGENCE

SOME PEOPLE TRAVEL TO GET AWAY FROM
THE EVERYDAY. YOU TRAVEL TO EMBRACE IT.

GO WITH THE ESSEX. NEWMAR CRAFTS
THIS EXTRAORDINARY DIESEL PUSHER
MOTORHOME SPECIFICALLY FOR TRAVELERS
LIKE YOU. PROVIDING TRULY SPACIOUS
LIVING AREAS WITH UP TO FOUR
SLIDEOUTS. FINELY DETAILED WOOD
CABINETS. PLUSHLY UPHOLSTERED
VILLA® FURNITURE. AND THE PAMPERING
AMENITIES OF A CUSTOM-BUILT HOME.

IN SHORT, THE ESSEX IS AN ENVIRONMENT
YOU'LL WANT TO GET AWAY TO. NOT FROM.





Carved Wood Accents

Slideout

Window Treatments

RELAXATION RESTS IN THE DETAILS

Slideout

The Essex interior invites truly expansive living, primarily because of its space-adding, flush-floor slideout rooms—which Newmar pioneered.

Carved Wood Accents

The trimwork surrounding the slideout openings features classically ornate corbels.

Window Treatments

Essex window treatments include elegant lambrequins and lined, pleated day/night shades.

Sculpted Carpet Inlay

A touch of artistry in fabric is provided by this decidedly upscale Essex feature.

Sculpted Carpet Inlay



4104/Windswept Pearl



LEFT: The cozy living-area slideout dinette features two casually elegant freestanding chairs and two upholstered folding chairs as well as a hidden-leaf table with a Corian® top.

ABOVE: Recalling the rich architectural detail of fine traditional homes, the Essex's ornate carved wood accents have an optional antiqued, hand-crafted pearl-glaze finish.

BELOW: Like your entertainment large? Switch on your 32-inch Sony® plasma color TV, handsomely mounted within cabinetry on a living area wall.



4503/Glazed Emerald



*Hand-Crafted,
Glazed-Finish Cabinets*

*Convection
Microwave Oven*

Ceramic Backsplash

ENJOY THE FRUITS OF ACHIEVEMENT



Hand-Crafted, Glazed-Finish Cabinets

The Essex offers this burnished-maple, glazed-finish option, which has been hand-crafted for an elegant touch of the highest quality. The Essex also excels in offering generous kitchen storage space. The cabinets are made of fine hardwoods and have attractive double-arched raised-panel doors.

Ceramic Backsplash

A decorative ceramic-tile backsplash covers the entire wall between the overhead cabinets and the countertop.

Convection Microwave Oven

A 30-inch convection microwave oven, helps increase your cooking options.

*Polished Porcelain
Tile Floor*

Polished Porcelain Tile Floor

The look is classic; the care is easy.



4505/Platinum Silver

ABOVE: The Corian® undermounted sink features countertop-flush covers, a faucet with a filtered drink dispenser and a pullout spray faucet.

RIGHT: Beneath the two-burner recessed cooktop with its countertop-matching bi-fold cover is an optional large-capacity in-drawer dishwasher that blends beautifully with the surrounding cabinetry.

BELOW: This optional Speedcook Advantium™ convection microwave oven mounts under the overhead cabinets and above an appliance garage with a rollup door. Expansive Corian countertops with contoured edges give you plenty of workspace and are easy to clean.



4503/Mystic Sable



4503/Mystic Sable w/Pearl Glazed Maple Cabinets

Overhead Cabinets

King Bed with Storage

REVIVE. RENEW. AND BEGIN AGAIN.

*Raised-Panel
Hardwood Base*

King Bed and Raised-Panel, Hardwood Base

The Essex bedroom features a standard king-sized bed with a raised-panel hardwood base and a King Koil™ turn-free mattress. It also includes a quilted bedspread with pillow shams, accent pillows and a throw. Underbed storage is large enough to stow dinette chairs, and it includes a larger-than-normal safe for storing your most precious documents and possessions. Shown here is the four-poster king bed, optional in select floorplans.

Overhead Cabinets

These convenient cabinets above the headboard let you store more of your favorite items, such as bedding or personal effects.



4505/Platinum Silver

ABOVE: This deep wardrobe has a generous amount of space for whatever your needs, including convenient shoe storage.

RIGHT: Among the Essex bathroom's many fine standards are an easy-cleaning Corian® countertop with no-drip edges and a specially shaped sink.

BELOW: This brilliant bedroom vanity mirror is actually a 23-inch Philips® LCD color TV that can also be used as a computer monitor.



4503/Glazed Emerald



4505/Platinum Silver





4104/Windswept Pearl

A



B

- A. In the "Driver's Command Center," all dashboard gauges and controls are well within view and reach, including the lights and wipers placed directly on the steering wheel.
- B. Optional OnStar® lets you access up-to-the-minute driving information and timely assistance with the touch of a button.
- C. Find your way wherever you roam with this optional Pioneer® Navigation System.
- D. Cab seating features plush Ultraleather upholstery, eight-way lumbar support, power recline and heat. The passenger seat is oversized and has a power footrest. The driver's seat has memory settings, as do the steering wheel, pedals and exterior mirrors.



C



D

4104/Windswept Pearl



E



F



G



H

E. Essex has an optional exterior entertainment system including a Sony® 23-inch flatscreen LCD color TV mounted on a swing-out arm, an AM/FM stereo with a CD player and two speakers, all of which are contained in a separate compartment.

F. Smooth-operating pantographic door arms let you expose the exterior entertainment center quickly. The pass-through storage compartment has side-hinged swingout doors that are 11-inches taller for easier access.

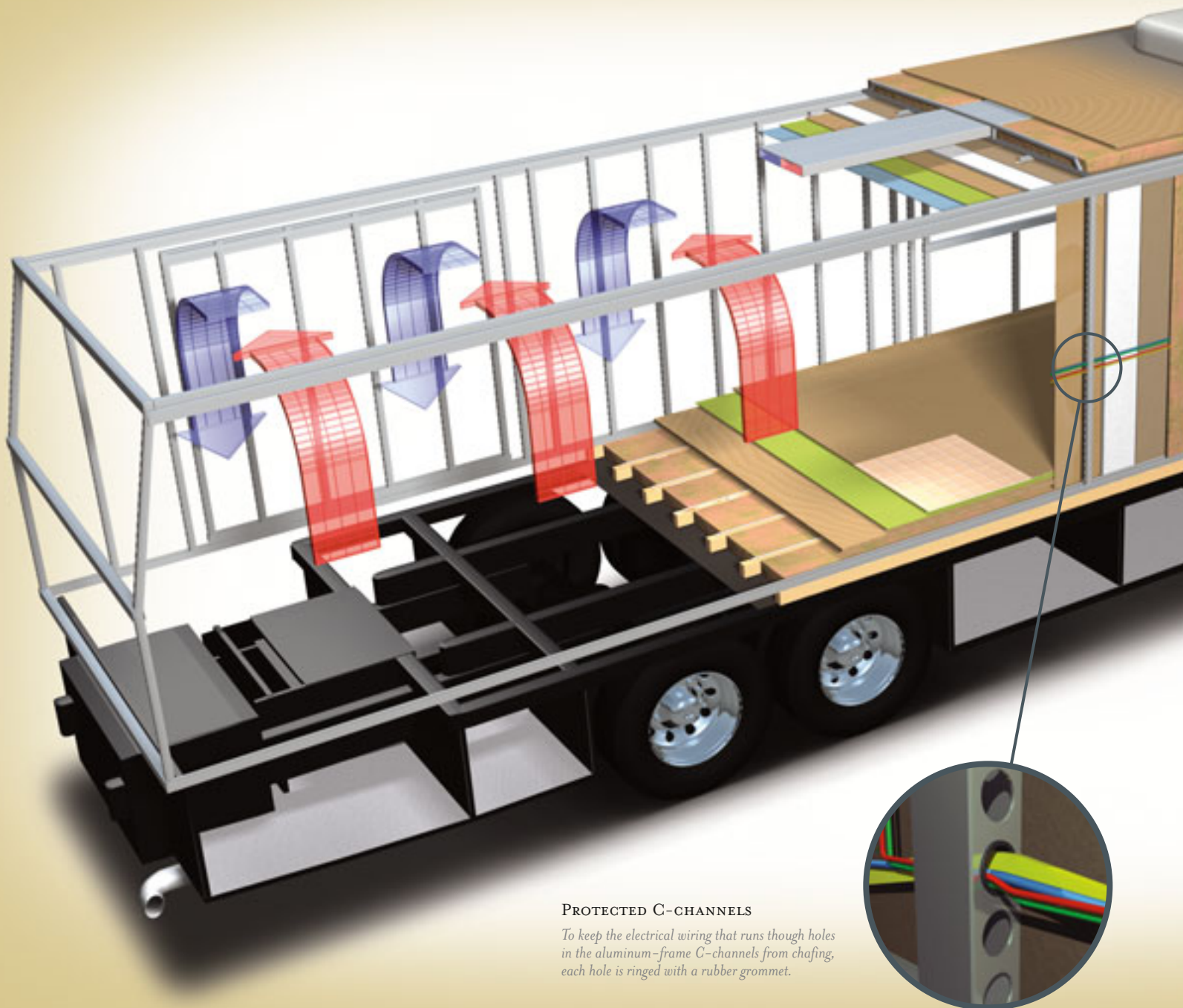
G. The rear end cap of the Essex unifies the various exterior elements. A camera is mounted at the top for the rearview color monitor system.

H. Barbecuing outdoors? Keep food on ice, closer to your grill, with this optional exterior storage-compartment freezer on a pullout tray.

THE NEWMAR KOUNTRY KLUB

As a Newmar owner, you qualify for membership in the Newmar Kountry Klub. Join your local chapter, and just look at the perks you'll enjoy: friendship, fun and adventure with other Newmar owners • rallies and caravans • special RV show events • discounts on RV services • a free monthly Klub magazine • Klub merchandise. And that's just for starters.

Join today. Call 877.639.5582, toll-free, or visit the Kountry Klub section of newmarcorp.com.



PROTECTED C-CHANNELS

To keep the electrical wiring that runs through holes in the aluminum-frame C-channels from chafing, each hole is ringed with a rubber grommet.

NOTHING ENDURES LIKE AN ESSEX

Thanks to its solid engineering, your Essex Diesel Pusher Motorhome will provide years of travel pleasure.

Essex is a showcase for Newmar's exacting standards, meticulous detailing and careful craftsmanship—all unsurpassed. It also embodies Newmar's long history of product innovation and industry "firsts." For us, this is a matter of pride. And tradition. Of taking personal responsibility and building a product that each of us at Newmar would want to own.

For the third year in a row, Newmar has won RVDA's Quality Circle Award, given in accordance with the results of an annual RV dealer satisfaction survey. The survey asks RV dealers to evaluate manufacturers' performance in four major categories: Sales Support, Product Competitiveness, Service and Warranty Support.

We are honored to receive this award, of course. It tells us that our efforts on behalf of our dealers and customers are appreciated. And we will continue working to keep their trust.





16" ON-CENTER FRAMING

Just like a fine site-built residential home, your Newmar home is framed 16 inches on center, which allows the best placement of outlets, switches and other components.

SIKAFLEX®

Sikaflex elastic adhesive is one of the strongest adhesives on the market today. It also serves as a sealant against air and water. And it helps dampen both sound and vibration.



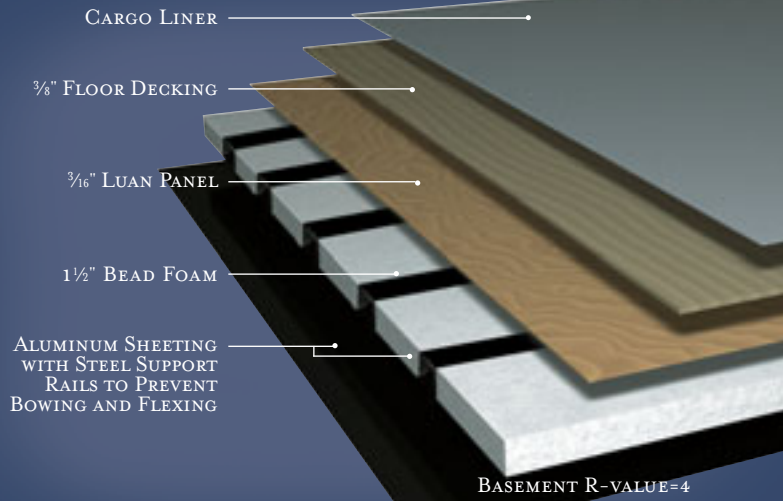
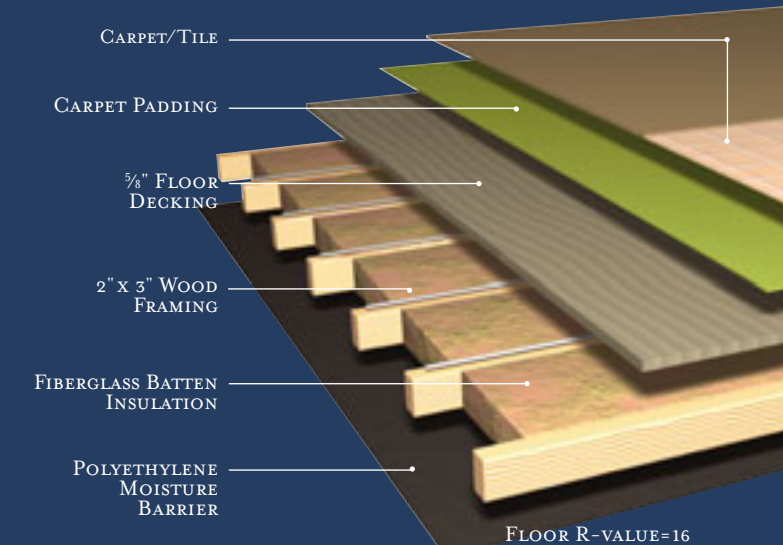
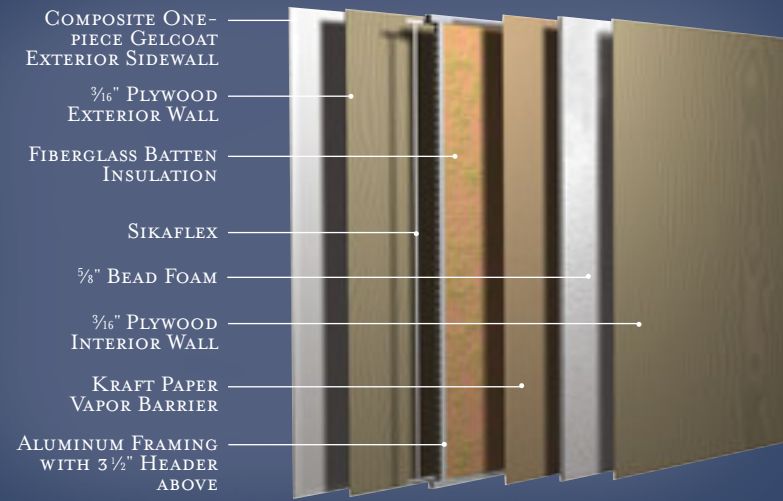
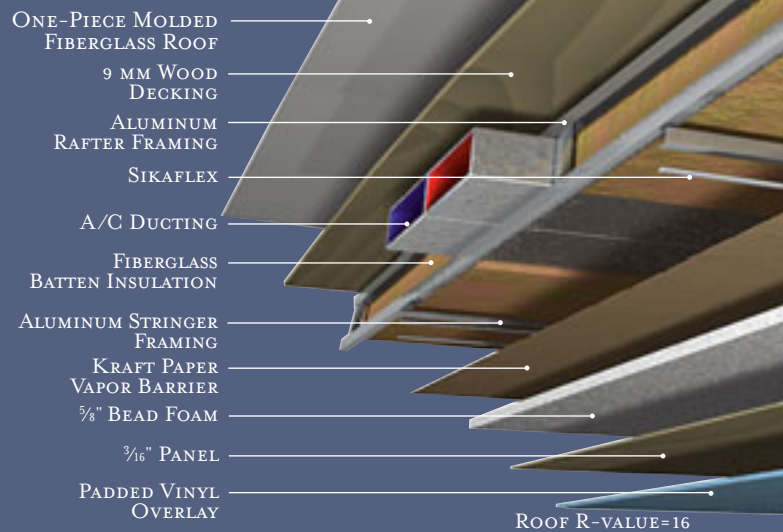
**TOTAL COMFORT™
NEWMAR CENTRAL AIR CONDITIONING**

Newmar's Total Comfort Central Air Conditioning system—standard with every Newmar RV—is just like those found in most site-built homes. It's actually two separate, fully ducted systems: one to distribute incoming cool air, the other to quickly and effectively remove warm air from every living area.

NEWMAR FREEDOM WARRANTY™

As proof of our commitment to you, we at Newmar back every Essex Diesel Pusher Motorhome we make with our industry-leading three-year/50,000-mile limited warranty: The Newmar Freedom Warranty.* Ask your dealer for details. Coverage this comprehensive is really liberating.

*Please see a Newmar dealer for a copy of the complete terms of the Freedom Warranty.



INTERIOR & EXTERIOR COLOR OPTIONS



TUSCAN BRONZE



GLAZED EMERALD



PLATINUM SILVER



GLACIER BLUE



WINDSWEPT PEARL



MYSTIC SABLE

FULL-PAINT MASTERPIECE FINISH™

Newmar's Full-Paint Masterpiece Finish creates an exterior of stunning beauty and incredible endurance—a true work of art. As industry leaders in applying full body paint to motorhome coaches, we at Newmar are pleased to offer the Full-Paint Masterpiece Finish as an Essex Diesel Pusher Motorhome standard.

DIAMOND SHIELD

Diamond Shield Front Paint Protection Film is standard on all Essex Motorhomes. Diamond Shield Film protects the front against stone chips, scratches and bug acids. Diamond Shield Film is optically clear with a high gloss designed to keep the Full-Paint Masterpiece Finish looking new.



TUSCAN BRONZE



GLAZED EMERALD



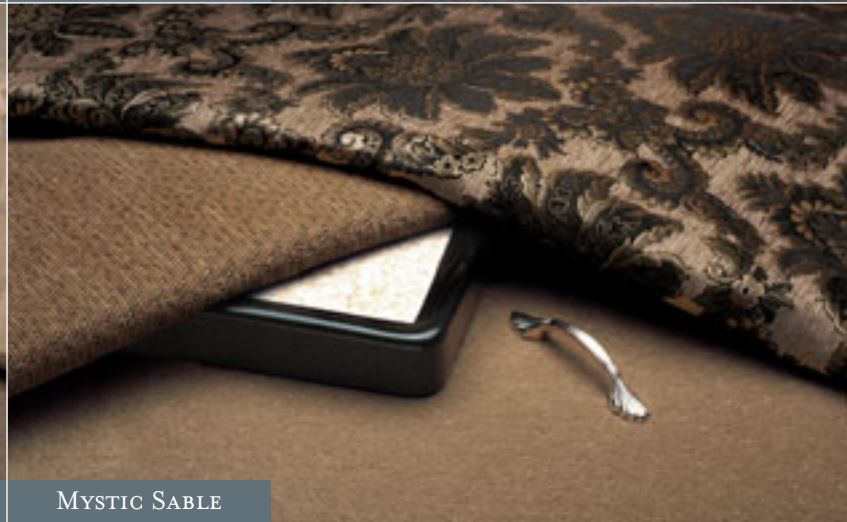
PLATINUM SILVER



GLACIER BLUE



WINDSWEPT PEARL



MYSTIC SABLE

Real woods will have variations in grain and color. Natural wood products will darken over time.



Northern Maple (Standard)



Burnished Maple



Pearl Glazed Maple



Natural Cherry



Regent Cherry

FEATURES

STANDARD FEATURES

MOTORIZED CHASSIS FEATURES

- Spartan® K2 Chassis with 500 HP Cummins® ISM Engine
- Cruise Control
- Accuride ACCU-SHIELD™ Non-Polish Aluminum Wheels
- HWH Hydraulic and Air Leveling
- Power Tilt-and-Telescope with VIP SMART Steering Wheel
- Memory Driver's Settings for Seat, Pedals, Steering Wheel and Exterior Mirrors
- 15,000 Lb. Hitch
- 16,000 Lb. Front Axle
- Anti-Lock Braking System
- Back-Up Alarm
- Burl Wood Smart Wheel
- Michelin® 315/80R 22.5 Tires
- Chassis Service Center
- Leece-Neville 200 Amp Alternator
- Heated Driver/Passenger Seats
- Allison® 4000MH Transmission
- 150 Gallon Fuel Tank
- 55 Degree Cramp Angle
- Front Disc Brakes
- Recessed Fuel Fills, with Crossover to Fill From Either Side

AIR CONDITIONING & HEATING

- Dash Heater & High-Output Air Conditioner
- Hydronic Zone Heating System
- Two 15M Penguin™ Heat Pump Roof Air Conditioners on 41' Floorplans
- Three 15M Penguin™ Heat Pump Roof Air Conditioners on 45' Floorplans
- LP Leak Detector
- A/C Drain Line Drains to Rear Underside of Coach

APPLIANCES & ACCESSORIES

- 30" Convection Microwave
- Roof-Mounted Air Horns
- Cable TV Connection with RG 6 Coax
- Telephone Connection with Phone Jacks in Living and Dash Area
- Prep for Compact Washer/Dryer
- Two-Burner Recessed Cooktop with matching Corian® Range Cover
- Dometic® 1402 SideWise Refrigerator with Auto Defrost & IceMaker, 13.8 Cu. Ft.
- Sony® 32" Plasma Color TV in Living Area
- Bose Wave® Radio with CD Player and Alarm Clock in Bedroom Area
- TV Antenna with Power Lift, One Exterior and Two Interior Jacks
- Pioneer® Surround Sound System in Living Area with CD and DVD Player
- Philips® 23" Mirror/Color TV/PC Monitor in Bedroom Area
- Pioneer AM/FM/XM Dash Radio with Remote 6-Disc CD Player
- Universal Remote Control
- Interior Rearview Mirror with Compass and Temperature Digital Display
- Carbon Monoxide Detector
- Rearview Color Monitor System
- Safe For 8 1/2" x 11" Files
- Satellite Prep — Phone, TV Jack and Receptacle
- VCR & Audio/Video Smart-Source Switch with Remote Control

CABINETS & FURNITURE

- Ultraleather Driver Seat with Eight-Way Lumbar Support, Power Recline and Heat
- Oversized Ultraleather Passenger Seat with Eight-Way Lumbar Support, Power Recline, Heat and Power Footrest

- Polished Corian Countertop with Integrated Sink Bowls and Flush Sink Covers in Kitchen
- Polished Corian Countertop on All Furniture
- Polished Corian Lavatory Countertop with an Integrated Bowl in Bathroom
- Northern Maple Hardwood Unitized Cabinets with Raised-Panel, Double-Arched Cabinet Doors
- King Bed with Hardwood Raised-Panel Bed Base
- Cedar Paneling on Rear Wardrobe Wall
- King Koil™ Turn-Free Mattress
- Lifts on Bed Top to Access Storage Area
- Shoe Storage Shelves Recessed into Rear Cap
- Villa™ Furniture

ELECTRICAL FEATURES

- 12.0 PowerTech Diesel Quiet Generator on Hydraulic Slides, Auto Changeover
- Battery Disconnect for House Batteries
- 50 Amp Electrical Service with Flexible Cord on Power-Cord Rewind Reel
- Exterior Security Lights, One Installed on Each Side
- Recessed Docking Lights
- Driving Lights
- Interior Courtesy Lights
- Halogen Ceiling Lights Throughout
- Emergency Engine Start Switch
- Four 6 Volt House Batteries on Pullout Tray
- Daytime Headlight System
- 5 Watt Solar Panel to Charge Chassis Battery
- 3100 Watt Inverter
- Automatic Generator Start — on Low Battery or Thermostat Temperature Setting
- 75 Amp Converter
- Driver Seat Memory Controls
- 110 Volt and 12 Volt Lighting to Main Slideout
- ICC Light Flasher Switch
- Lights in Exterior Storage Compartments, Controlled by an Interior Master Switch
- Lights in Wardrobe
- Midship Side Turn Signals
- Mood Lights Recessed in Ceiling, Lambrequins And Kitchen Valance
- Solar Prep, Wire from Roof to Battery Compartment
- Switched Receptacle for Engine Block Heater
- Two 12 Volt Auxiliary Receptacles on Dashboard

EXTERIOR FEATURES

- Full-Paint Masterpiece Finish™ with Diamond Shield Front Protective Film
- Power Locking Baggage Doors
- Rear Protective Tow Guard with Stainless Steel Newmar Name Cutout
- Convex Exterior Chrome Mirrors with Remote Control, Defrost and Turn-Signal Indicators
- Pantographic Basement Doors with Side-Swinging Doors Under Slideouts
- Four-Point Hydraulic Jacks with Air Leveling. Automatic Control And Air Dump
- Mud Flaps
- Undercoating
- Power-Cord Reel
- Bonded Windshield
- Auto Freshwater-Tank Fill Switch
- Dual Locking Entry Door with Air Seal

INTERIOR FEATURES

- Padded Vinyl Ceiling
- Quilted Bedspread with Shams, Accent Pillows and Faux Fur Throw

- Polished Porcelain Floor Tile in Kitchen, Bathroom, Driver's Area and Entrance-Door Area
- Pneumatic Entry-Door Seal
- Fabrica® Carpeting with High-Density Padding in Bedroom, with Sculptured Carpet in Living Room Area
- Framed Decorative Pictures in Bathroom
- Hardwood Fascia on Living Area Slideout
- Power-Activated Windshield Area Privacy Shade
- Power Driver- and Passenger-Side Sun Shades
- Smoke Detector and 10 Bc Fire Extinguisher

PLUMBING/BATH FEATURES

- Fiberglass Shower with Glass Door
- Water Filter with Drink Dispenser at Kitchen Sink
- Monitor Panel
- Sewage Holding-Tank Rinse
- Automatic-Rewind Water-Hose Reel
- Exterior Convenience Wash Station — Hot/Cold Water, Soap and Towel Dispenser
- Water Filter for Entire Unit
- Thetford™ Aria Sculptured China Stool
- Auto Water-Fill System
- Delta® Faucets in Kitchen and Bathroom, with Pullout Spout Faucet in Kitchen
- On Demand Water System With Aquajet ES Pump
- Manibloc Plumbing System
- Monoplex Water Pump Switch — Located in Bathroom, Front overhead and Exterior, Near Gate Valves

CONSTRUCTION FEATURES

- Aluminum-Frame Sidewalls & Roof Construction, 16" on Center
- Gelcoated Fiberglass Exterior Sides
- One-Piece Molded-Fiberglass Roof
- Roof R-value Rating: 16
- Sidewall R-value Rating: 11
- Floor R-value Rating: 16
- Basement R-value Rating: 4

WINDOWS, AWNINGS & VENTS

- Automatic Entrance-Door Step
- Fan-Tastic® Vent with Rain Sensor in Kitchen Area and Bathroom
- Driver's-Side Power Window
- Double-Pane, Tinted Safety-Glass Windows
- Skylight in Bathroom
- Cockpit Overhead Ventilation System
- A&E® Boxed Awnings — Power Patio & Entry
- A&E Power Box Side Awning
- A&E 9000 Window Awnings — on Bedroom & Slideout Windows
- A&E Oasis Power Front Entrance-Door Awning
- Lighted Acrylic Assist Handle at Entrance Door

OPTIONAL FEATURES

APPLIANCES & ACCESSORIES

- CB Radio
- Security System
- Norcold® Freezer on Pullout Tray
- Washer/Dryer
- 30" Speedcook Advantium™ Microwave
- In-Drawer Dishwasher
- Norcold Four-Door Refrigerator with IceMaker and Water Dispenser
- External Entertainment with Sony LCD Monitor and AM/FM CD Radio
- OnStar® System with First-Year Service Included

FEATURES & SPECIFICATIONS

- Pioneer Navigation System
- Pioneer Navigation System with Additional Monitor for Passenger
- Remote-Controlled Rearview Camera
- Sideview Cameras, with Image Displayed on Rearview Monitor Screen
- Sony 23" LCD TV in Front Overhead – Available on all but 4103, 4104, 4505
- All-Electric Operation with Dometic or Norcold Refrigerator and Two Extra Batteries
- Central Vacuum with Deluxe Tool Kit
- KVH® L3 Satellite Dish

CABINETS & FURNITURE

- Regent Cherry Hardwood Cabinets
- Burnished Maple Hardwood Cabinets
- Pearl Glazed Maple Hardwood Cabinets
- Natural Cherry Hardwood Cabinets
- Four-Poster King Bed
- Ultraleather Sofa/Dinette Ensemble with Two Folding Chairs – not Available on 4103 or 4104
- Ultraleather/Vinyl Sofa on Off-Door Side

ELECTRICAL FEATURES

- Roof-Mounted Spotlight
- 12.5 kW Onan® Generator

EXTERIOR FEATURES

- Large Storage Tray with Access from One or Both Sides
- Rear Ladder

PLUMBING / BATH FEATURES

- Assist Handle in Shower

WINDOWS, AWNINGS & VENTS

- Keyless Entrance-Door Pad
- Power Carefree® Awning Package
- Girard® Awning Package

FLOORPLAN SPECIFICATIONS

FLOORPLAN	APP. OVERALL LENGTH	WIDTH	APP. OVERALL HEIGHT	INTERIOR WIDTH	INTERIOR HEIGHT	GREY	SEWAGE	WATER	LP	FURNACE	WATER HEATER
EXDP 4103	41' 11"	101.5"	12' 08"	95.5"	82"	65 gal.	45 gal.	105 gal.	32 gal.	50,000 Btu	Continuous
EXDP 4104	41' 11"	101.5"	12' 08"	95.5"	82"	65 gal.	45 gal.	105 gal.	32 gal.	50,000 Btu	Continuous
EXDP 4502	44' 11"	101.5"	12' 08"	95.5"	82"	65 gal.	45 gal.	105 gal.	32 gal.	50,000 Btu	Continuous
EXDP 4503	44' 11"	101.5"	12' 08"	95.5"	82"	65 gal.	45 gal.	105 gal.	32 gal.	50,000 Btu	Continuous
EXDP 4505	44' 11"	101.5"	12' 08"	95.5"	82"	65 gal.	45 gal.	105 gal.	32 gal.	50,000 Btu	Continuous
EXDP 4506	44' 11"	101.5"	12' 08"	95.5"	82"	65 gal.	45 gal.	105 gal.	32 gal.	50,000 Btu	Continuous

SPARTAN® CHASSIS INFORMATION

FLOORPLAN	ENGINE HP	AXLE RATIO	FUEL CAP.	WHEELBASE	*FRONT GAWR	*REAR GAWR	TAG GAWR	*GVWR	*GCWR	APP. UVW	APP. NCC
EXDP 4103	500	4.30	150 gal.	248" + TAG	16,000 lb.	20,000 lb.	10,000 lb.	46,000 lb.	61,000 lb.	36,900 lb.	9,100 lb.
EXDP 4104	500	4.30	150 gal.	248" + TAG	16,000 lb.	20,000 lb.	10,000 lb.	46,000 lb.	61,000 lb.	36,950 lb.	9,050 lb.
EXDP 4502	500	4.30	150 gal.	296" + TAG	16,000 lb.	20,000 lb.	10,000 lb.	46,000 lb.	61,000 lb.	38,400 lb.	7,600 lb.
EXDP 4503	500	4.30	150 gal.	296" + TAG	16,000 lb.	20,000 lb.	10,000 lb.	46,000 lb.	61,000 lb.	38,350 lb.	7,650 lb.
EXDP 4505	500	4.30	150 gal.	296" + TAG	16,000 lb.	20,000 lb.	10,000 lb.	46,000 lb.	61,000 lb.	38,300 lb.	7,700 lb.
EXDP 4506	500	4.30	150 gal.	296" + TAG	16,000 lb.	20,000 lb.	10,000 lb.	46,000 lb.	61,000 lb.	37,400 lb.	8,600 lb.

Lengths, Heights, Widths and Dry Weights are approximate. Weight will vary based on optional equipment added to the above base weight.

GAWR: Gross Axle Weight Rating is the maximum permissible weight for an axle.

GVWR: Gross Vehicle Weight Rating is the maximum permissible weight of a fully loaded motorhome.

GCWR: Gross Combination Weight Rating is the value specified by the manufacturer of the vehicle as the maximum allowable loaded weight of this motorhome and any towed trailer or towed vehicle.

UVW: Unloaded Vehicle Weight is the weight of this motorhome as built at the factory with full fuel, engine oil and coolants. The UVW does not include cargo, fresh water, LP gas or dealer-installed accessories.

NCC: Net Carrying Capacity is the maximum weight of all occupants, including the driver, personal belongings, food, fresh water, waste water, LP gas, tools, tongue weight of towed vehicle, dealer-installed accessories, etc., that can be carried by the motorhome.

* Specifications supplied by chassis manufacturer.



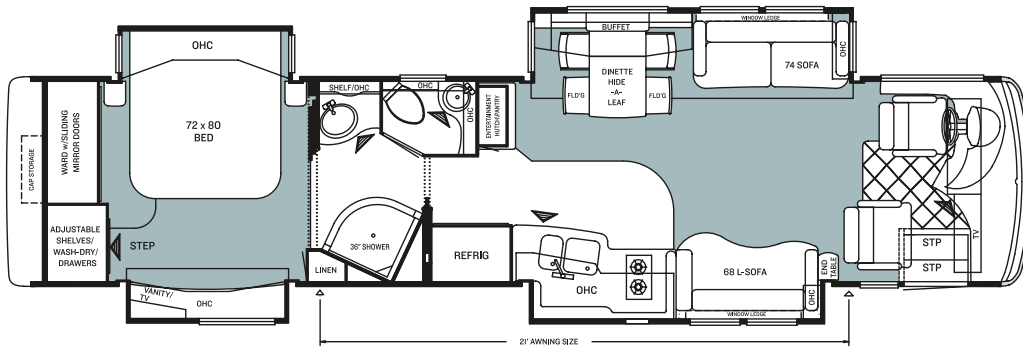
SPARTAN K2 CHASSIS

The K2 chassis has set the standard in the marketplace for its strength and power. It is equipped with a powerful Cummins® 500 horsepower ISM engine plus a 16,000 lb. IFS (Independent Front Suspension) to carry all your toys. The K2 chassis allows you to pass other drivers on a steep incline with ease. The K2 will allow you to maneuver the motorhome like a pro. Handle tight turns with perfect precision. Nothing can get in your way when you are equipped with a Spartan K2 under your coach. Included with your K2 is a 36-month/50,000-mile no-deductible warranty. And for peace of mind, there is a roadside assistance program for the entire warranty period.

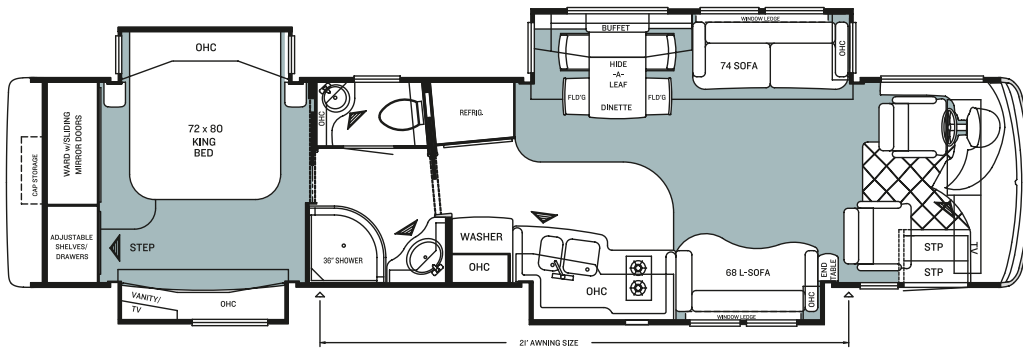
In keeping with our tradition of bringing our customers the highest-quality products in the industry, Newmar works with the following manufacturers to supply components for our vehicles.



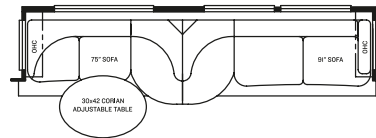
FLOORPLANS



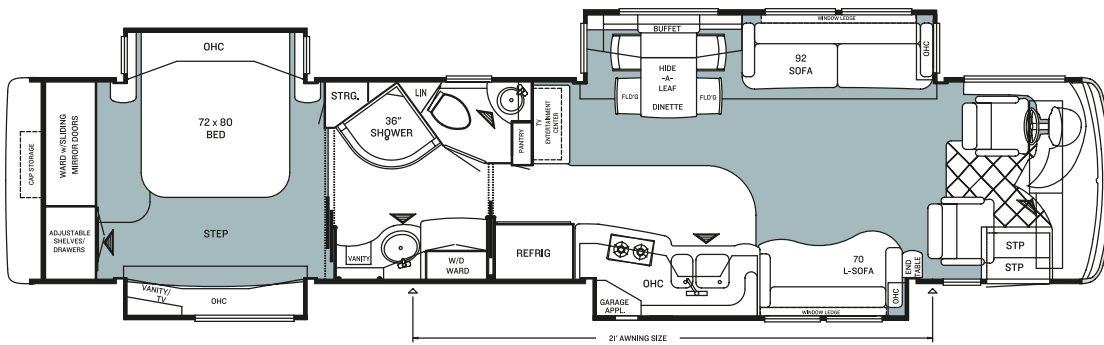
EXDP 4103 "CAMBRIDGE"



EXDP 4104 "TRAFALGAR"



K331
SOFA/DINETTE
COMBINATION



EXDP 4502 "SOMERSET"

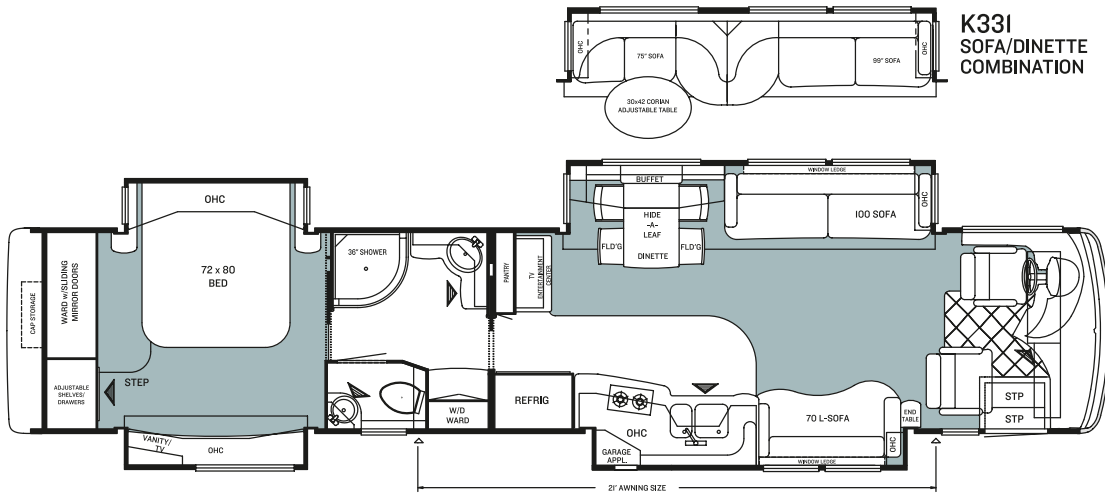
NEWMARCORP.COM

Visit our Web site. Here you'll easily access the most up-to-date Newmar product information, model specifications, floorplans and options. You'll also learn more about who we are, how we work and what we believe in. Become a registered user—for free—and you'll also get access to the latest event data, technical and service tips and the location of your nearest Newmar dealer. This isn't just our site—it's yours.

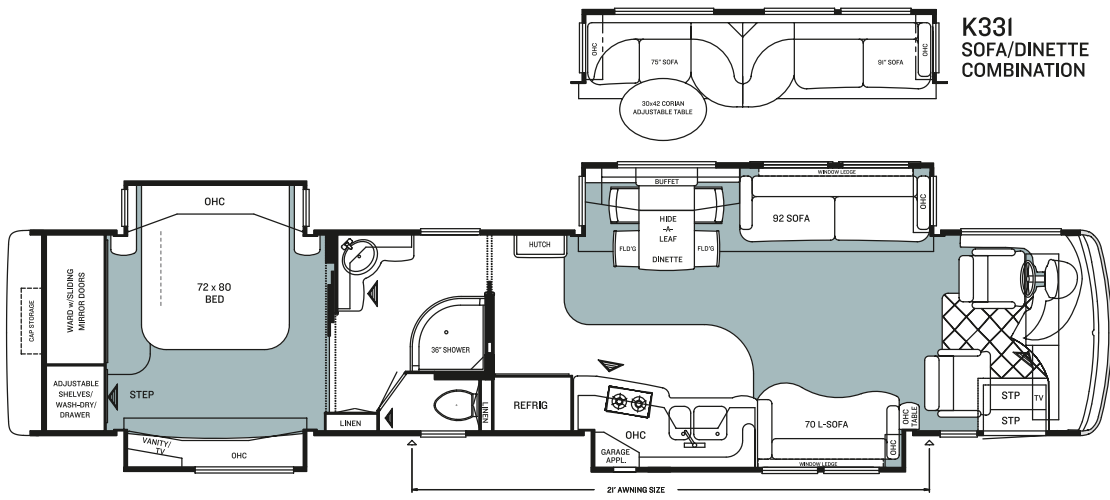
THE NEWMAR FACTORY TOUR

We'd love to have you visit our state-of-the-art production facility in Nappanee, Indiana. Factory tours are given Monday through Friday at 10 a.m. and 1 p.m. (Indiana time). Pre-registration is not required but is helpful, since tour-group sizes may be limited from time to time. Please arrive 15 minutes before the hour and check in at the tour area that is located in Building Nine on Cheyenne Street. No open-toed sandals can be worn, and children under the age of eight are not allowed to take the tour.

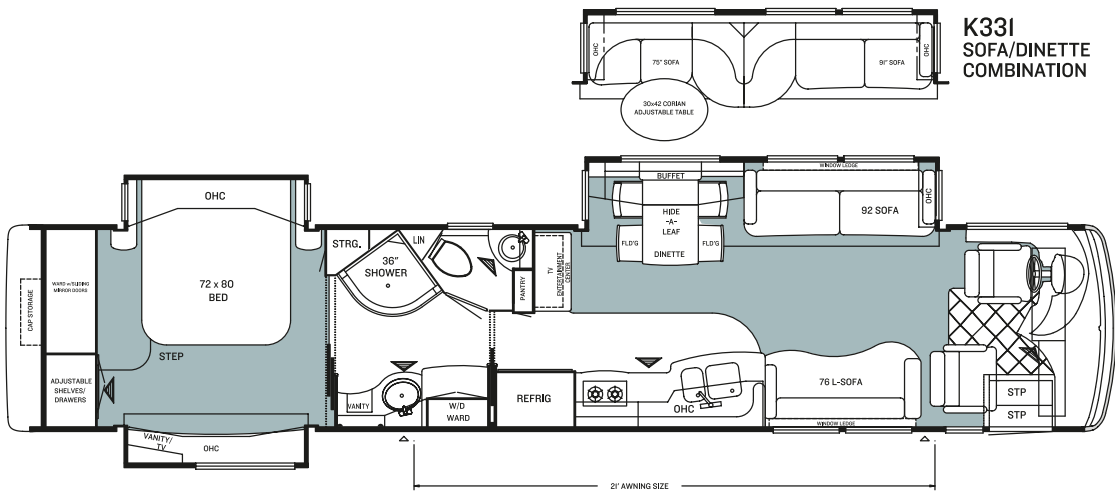
For more information or to pre-register, please call 800.860.0086.



EXDP 4503 "WESTMINSTER"



EXDP 4505 "OXFORD"



EXDP 4506 "KENSINGTON"



NEWMAR QUALITY: A WAY OF LIFE

NEWMAR CORPORATION
355 N DELAWARE ST
PO BOX 30
NAPPANEE IN 46550-0030
574-773-7791 Fax 574-773-2895
www.newmarcorp.com

Your Official Essex Dealer: