



2006

CYPRESS

FIFTH WHEEL
by Newmar





You're an experienced RVer. You know what you want. Maybe you're stepping up from your first, second or third RV — or looking to surround yourself with more comfort, while getting the most for your money. That's where Newmar experience comes in. You know the name. And you know of the quality, integrity and superior warranty support it represents.

The new 2006 Cypress fifth wheel showcases Newmar experience — and caters to yours. Cypress wraps you in Newmar's famous, old-world craftsmanship — with all the details that maximize your RV enjoyment — from hardwood, raised panel cabinet doors, freestanding dinette table and chairs, full video and audio entertainment center, right down to a wood magazine rack. It's the fifth wheel you've dreamed of owning.

Experience the Cypress, the next step up in your RVing lifestyle.

IT'S ALL ABOUT...



... EXPERIENCE





A



B



EXPERIENCE THE AMENITIES!

[A] Laminate kitchen countertop with oak edging provides ample work surface. Dual acrylic sink comes with drop-in Teflon® cover to expand counter area. A second sink cover is optional. [B] Switches and systems controls are thoughtfully grouped for easy access. [C] Cabinet toe kicks are another home-style touch. SuperStorage™ features include [D] deep kitchen drawers and [E] handy storage compartments in dinette chairs.



C



D



E

From the decorative, low-maintenance vinyl floor to the color-coordinated window valances, your Cypress kitchen and dining area provides a cozy, inviting gathering place. The eight-cubic-foot refrigerator is thermostatically controlled to keep food at just the right temperature. Raised panel refrigerator and freezer door fronts beautifully coordinate with the cabinetry. The flush-mount, three-burner range has dependable piezo ignition. The range also has a metal, bi-fold burner cover — and boasts a 22-inch oven. With the overhead microwave, the Cypress kitchen gives you loads of flexibility and capability for creating a snack or an elegant meal. Newmar also remembers the details that add so much to your RV mealtime enjoyment. You'll find a Corian® knife block behind the range...range hood with light and fan...a paper towel holder...and even a molded silverware divider tray. Kitchen cabinets and drawers abound with SuperStorage™ space. Drawers glide smoothly on metal guides, and stay securely closed while you're on the road.

32RLKS shown above with optional convenience package.





EXPERIENCE THE COMFORT

After busy RVing days, nothing beats the tranquility of your Cypress bedroom suite. Quilted comforter and headboard, plus matching pillow shams and window treatments invitingly coordinate with Cypress décor. Two built-in speakers enable you to pipe in music from the Cypress entertainment center. This comfy bedroom environment is matched only by the convenience of its SuperStorage™ design. For example, a spacious, carpeted, under-bed compartment easily flips open thanks to hydraulic bed-top lifts. The full-width wardrobe with mirrored doors adds spacious storage flexibility — as well as a spacious look — to this home-like bedroom.

A well-thought-out bathroom completes the Cypress bedroom suite. The roomy shower has its own light — and a handy seat. A 10-gallon gas/electric DSI™ water heater ensures plenty of hot water for relaxing showers. The acrylic sink is mounted in a seamless laminate countertop. There's plenty of cabinet space below, plus a mirrored medicine chest and high-mounted light



strip above. The Cypress systems monitor panel is positioned at your fingertips on the wall behind the sink. The toilet is located in a separate water closet with a full size, hinged door. The water closet also houses a separate compartment for your 12-volt and 110-volt electrical system circuit breakers. All breakers are concealed neatly behind hardwood cabinet doors. Cabinets and drawers surround the door-side window for storage space galore! The unit includes a cedar-lined laundry hamper, a vanity top, and a TV shelf pre-wired with electric and antenna hookups.



32RLKS shown above with optional convenience package and washer/dryer prep.



NEWMAR VALUE ...DESIGNED INTO EVERY CYPRESS

INTERIOR COLOR OPTIONS

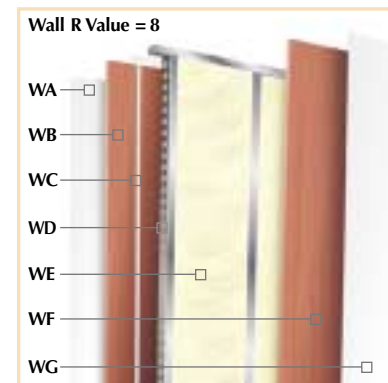


Your Cypress fifth wheel reflects Newmar's long history of product innovation and industry "firsts". You can depend on the exacting standards and meticulous care by which this fifth wheel is built. It's a showcase for Newmar value.

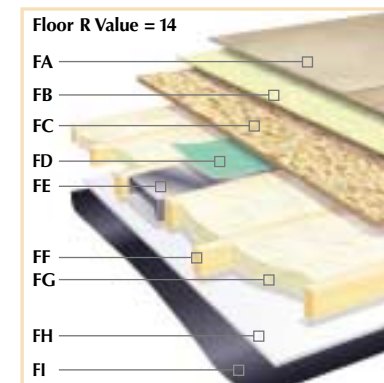
- A. Aerodynamic Gelcoated Fiberglass End Caps
- B. Filon® Exterior Sidewall
- C. Dark Tinted Safety Glass
- D. Dual Battery Box
- E. Molded Lower Sidewall Skirting and Gooseneck
- F. Power Front Jacks
- G. Pass-Through SuperStorage™
- H. 12" I-Beam Frame
- I. Full Height Frame Outriggers
- J. EZ Lube® Hubs
- K. MOR/ryde® RE Suspension with Wet Bolts and Shocks
- L. Radius Aluminum Roof Wraps
- M. 15,000 BTU Total Comfort™ Ducted Air Conditioning
- N. 16" O.C. Aluminum Sidewall Studding
- O. BriteTEK® Roof
- P. "Walkable" Roof Decking
- Q. 16" O.C. Aluminum Roof Rafters
- R. Side Awning

Newmar Express Limited Warranty

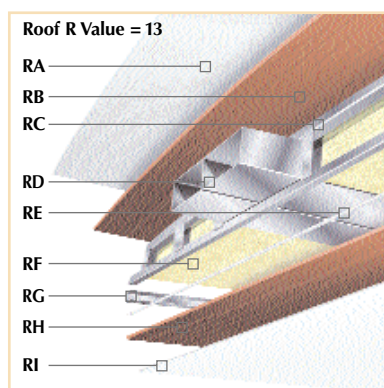
As proof of our commitment to you, we at Newmar back every Cypress fifth wheel with our industry-leading, one-year Newmar Express Limited Warranty. Ask your dealer for details



- WA. Filon® Exterior Sidewall
- WB. 3/16" Plywood Exterior Wall
- WC. Sikaflex® Adhesive
- WD. Aluminum Framing with C-Channels
- WE. R-7 Fiberglass Batten Insulation
- WF. 3/16" Plywood Interior Wall
- WG. Vinyl Overlay



- FA. Carpet/Vinyl Floor
- FB. Residential Grade Carpet Padding
- FC. 5/8" Floor Decking
- FD. Foam Panel for Added Insulation and Noise Reduction
- FE. Aluminum Heat Ducting
- FF. 2" x 3" Wood Floor Joists
- FG. R-7 Fiberglass Batten Insulation
- FH. 5/8" Bead Foam Insulation
- FI. Aluminum Underbelly 4' x 8' Sheets



- RA. Strong, durable BriteTEK® Roof
- RB. "Walkable" Roof Decking
- RC. Aluminum Rafter Framing
- RD. Air Conditioning Ducting
- RE. Sikaflex® Adhesive
- RF. R-11 Fiberglass Batten Insulation
- RG. Aluminum Stringer Framing
- RH. 3/16" Plywood Ceiling Panel
- RI. Vinyl Overlay

Quality Circle Award

Newmar has been recognized by the RV Dealer Association Quality Circle Award for its efforts on behalf of customers and dealers.



1. Cypress rides confidently on 16-inch Goodyear® G-rated tires as standard equipment (shown with optional polished aluminum wheels).
2. Utility components are located in a separate, easily accessible compartment.
3. Expansive pass-through SuperStorage™ area is heated and lighted. It boasts a handy cargo hook and three-way access.
4. The Newmar designed slideout mechanism provides years of smooth, dependable service.

LAPIS



WILLOW



SANDSTONE



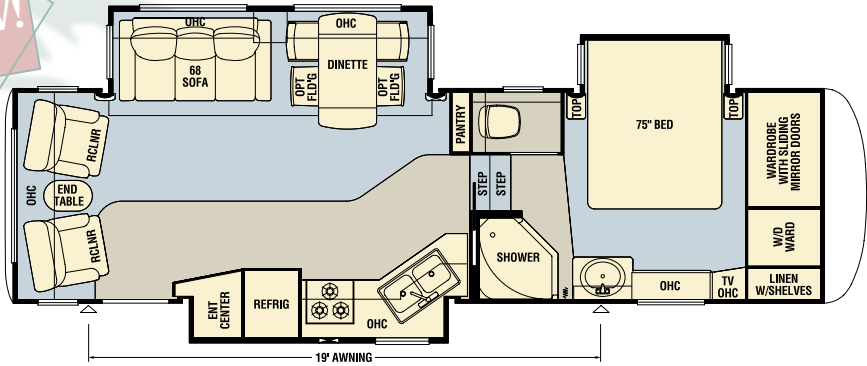
AMETHYST



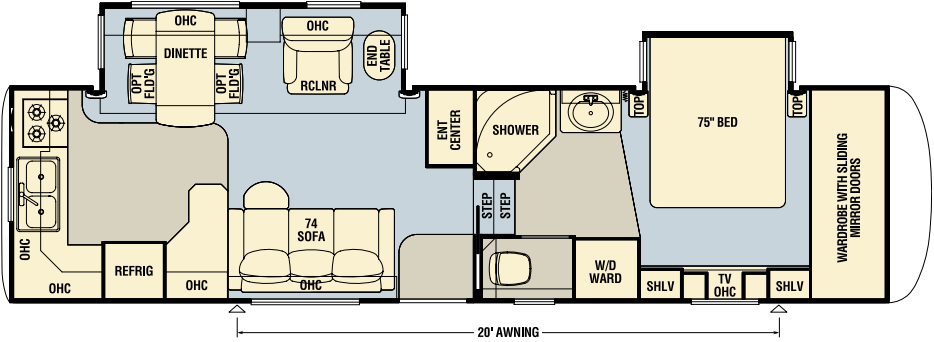
CYPRESS

NEW!

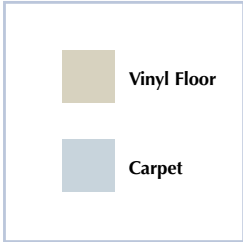
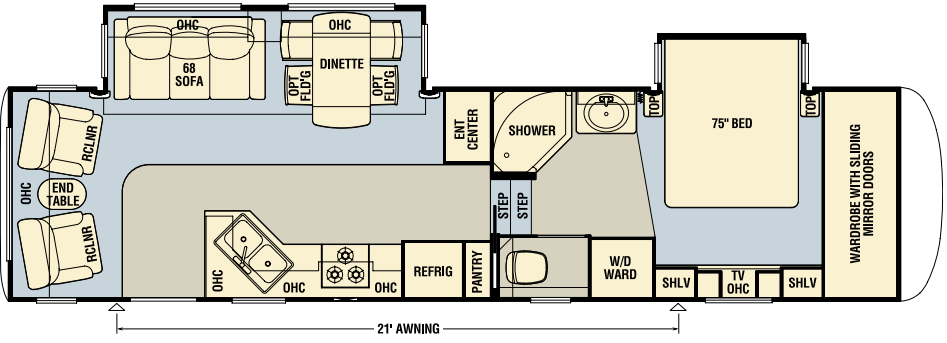
Model	CPFW 29KSRE
Tire Size	235/85R16-G
GAWR	6,000
GVWR	14,000
App. Length	32' 7"
App. Height	12' 11"
Width	97"
App. Dry Weight	10,900
App. Hitch Weight	2,180
Fresh Water (gal.)	75
Grey (gal.)	84
Sewage Cap. (gal.)	42
App. Hitch Height	47"
Heat Cap. (BTU)	35,000



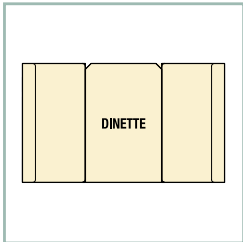
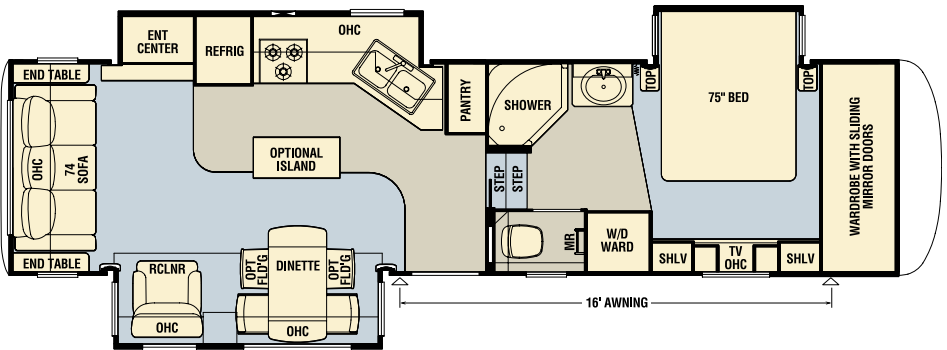
Model	CPFW 31RKCL
Tire Size	235/85R16-G
GAWR	7,000
GVWR	16,250
App. Length	34' 10"
App. Height	12' 11"
Width	97"
App. Dry Weight	11,575
App. Hitch Weight	2,430
Fresh Water (gal.)	75
Grey (gal.)	84
Sewage Cap. (gal.)	42
App. Hitch Height	47"
Heat Cap. (BTU)	35,000



Model	CPFW 32CKRE
Tire Size	235/85R16-G
GAWR	7,000
GVWR	16,250
App. Length	35' 9"
App. Height	12' 11"
Width	97"
App. Dry Weight	11,935
App. Hitch Weight	2,287
Fresh Water (gal.)	75
Grey (gal.)	84
Sewage Cap. (gal.)	42
App. Hitch Height	47"
Heat Cap. (BTU)	35,000

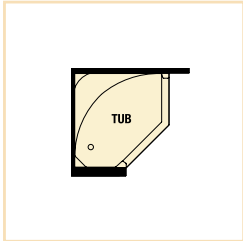
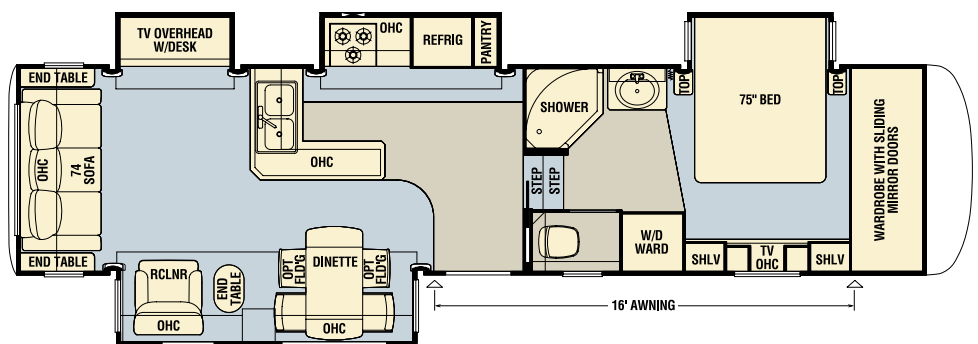


Model	CPFW 32RLKS
Tire Size	235/85R16-G
GAWR	7,000
GVWR	16,250
App. Length	35' 4"
App. Height	12' 11"
Width	97"
App. Dry Weight	12,500
App. Hitch Weight	2,625
Fresh Water (gal.)	75
Grey (gal.)	84
Sewage Cap. (gal.)	42
App. Hitch Height	47"
Heat Cap. (BTU)	35,000



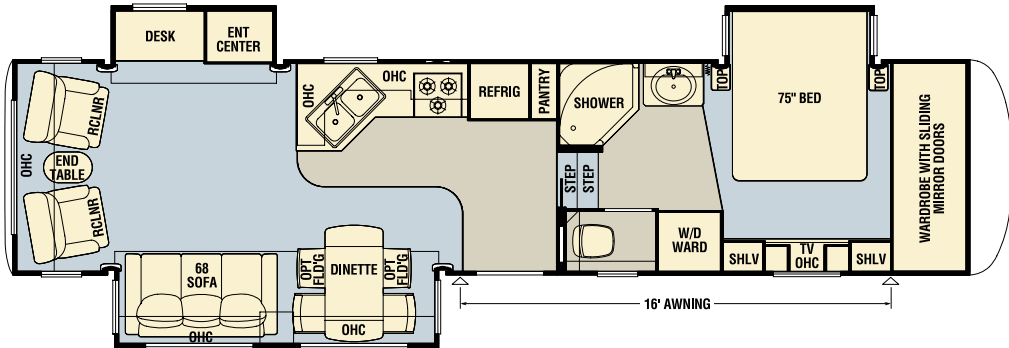
Built-in booth dinette with (2) drawers option available on all models.

Model	CPFW 33RLPK
Tire Size	235/85R16-G
GAWR	7,000
GVWR	16,250
App. Length	36' 11"
App. Height	12' 11"
Width	97"
App. Dry Weight	13,070
App. Hitch Weight	2,615
Fresh Water (gal.)	75
Grey (gal.)	84
Sewage Cap. (gal.)	42
App. Hitch Height	47"
Heat Cap. (BTU)	35,000

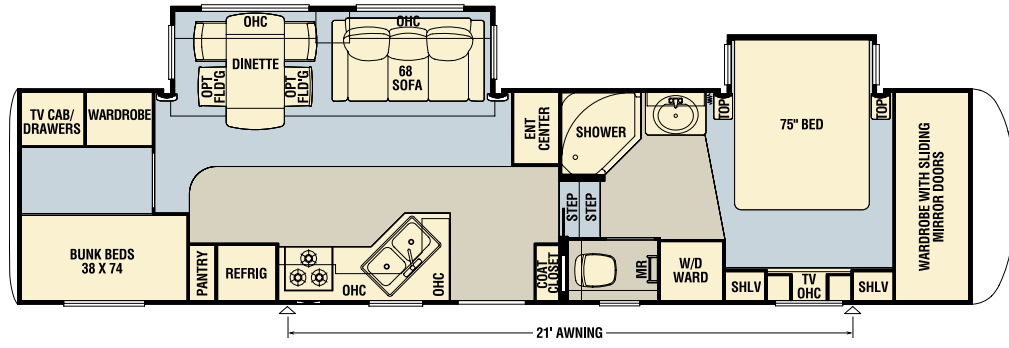


Fiberglass tub with glass door option available on all models.

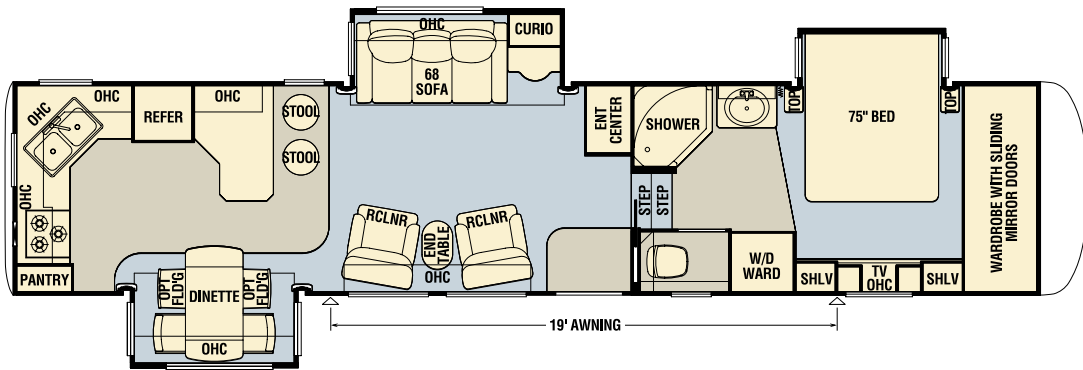
Model	CPFW 34BLSK
Tire Size	235/85R16-G
GAWR	7,000
GVWR	16,250
App. Length	37' 11"
App. Height	12' 11"
Width	97"
App. Dry Weight	12,625
App. Hitch Weight	2,518
Fresh Water (gal.)	75
Grey (gal.)	84
Sewage Cap. (gal.)	42
App. Hitch Height	47"
Heat Cap. (BTU)	35,000



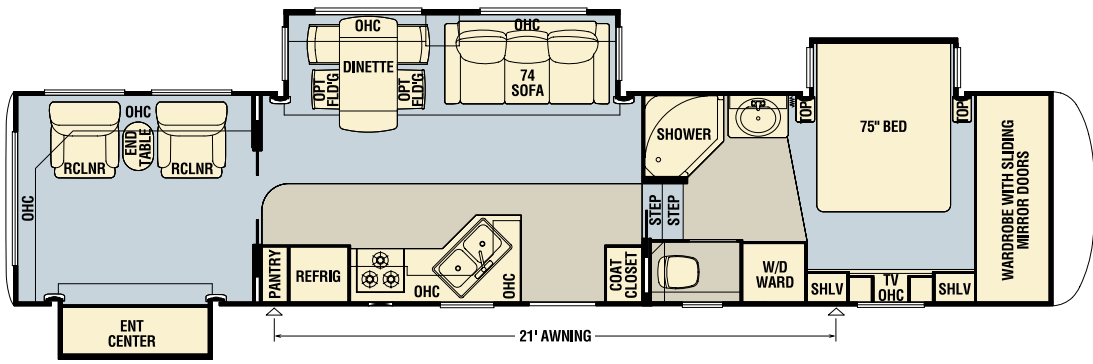
Model	CPFW 34DBCK
Tire Size	235/85R16-G
GAWR	7,000
GVWR	16,250
App. Length	37' 9"
App. Height	12' 11"
Width	97"
App. Dry Weight	12,250
App. Hitch Weight	2,470
Fresh Water (gal.)	75
Grey (gal.)	84
Sewage Cap. (gal.)	42
App. Hitch Height	47"
Heat Cap. (BTU)	35,000



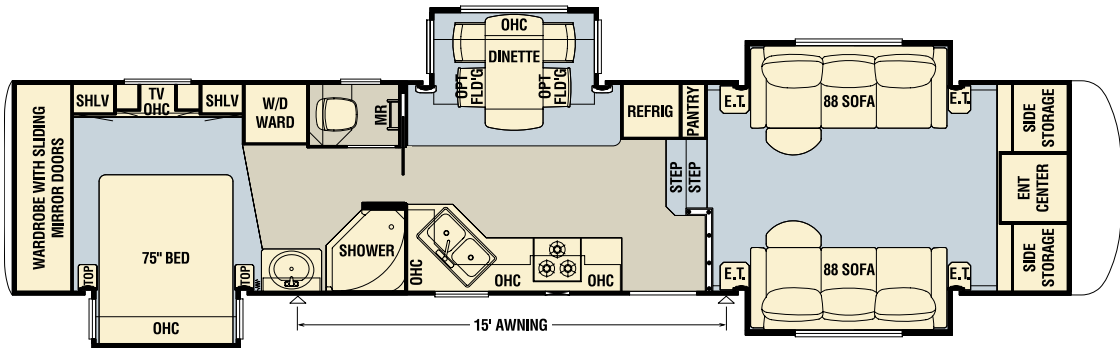
Model	CPFW 37SKCL
Tire Size	235/85R16-G
GAWR	7,000
GVWR	16,250
App. Length	40' 10"
App. Height	12' 11"
Width	97"
App. Dry Weight	13,500
App. Hitch Weight	2,700
Fresh Water (gal.)	75
Grey (gal.)	84
Sewage Cap. (gal.)	42
App. Hitch Height	47"
Heat Cap. (BTU)	35,000



Model	CPFW 38SDKC
Tire Size	235/85R16-G
GAWR	6,000
GVWR	18,000
App. Length	41' 2"
App. Height	12' 11"
Width	97"
App. Dry Weight	13,850
App. Hitch Weight	2,770
Fresh Water (gal.)	75
Grey (gal.)	84
Sewage Cap. (gal.)	42
App. Hitch Height	47"
Heat Cap. (BTU)	35,000



Model	CPFW 39RBFL
Tire Size	235/85R16-G
GAWR	6,000
GVWR	18,000
App. Length	41' 10"
App. Height	12' 11"
Width	97"
App. Dry Weight	13,830
App. Hitch Weight	2,625
Fresh Water (gal.)	75
Grey (gal.)	84
Sewage Cap. (gal.)	42
App. Hitch Height	47"
Heat Cap. (BTU)	35,000



EXPERIENCE THE...

QUALITY

CYPRESS “GREAT EIGHT”

Standard Exterior Value Features



EZ Lube® Axles allow RVers to periodically lubricate the bearings without removing hubs from the axles.
(Shown with optional polished aluminum wheels.)

Insulated and heated holding tanks are protected by the fully-enclosed underbelly.



Undermounted 16-inch G-rated Goodyear® spare tire is easy to access with lift kit.



Dark tinted safety glass windows provide protection from sun and added privacy — and enhance the RV's distinctive good looks.



Conveniently located dual battery box compartment accepts your choice of RV batteries.



In-line water filter helps ensure plenty of clean, clear water wherever you travel.



Late-night hook-up light at sewer hose termination point.



MOR/ryde® RE suspension with shocks and wet bolts significantly cushions and absorbs road shock to provide a softer ride and smoother, safer towing.



EXPERIENCE THE...

VALUE

CYPRESS “GREAT EIGHT”

Standard Interior Value Features



Create-A-Breeze™ vent with automatic lift in water closet.

Spacious, one-piece fiberglass shower with easy-to-clean molded seat and glass enclosure.



Entertainment package includes 27-inch color TV and surround sound system with DVD, CD and AM/FM stereo tuner.



Stylish and comfortable Hide-A-Bed sofa with (2) foot rests. (Not available on 39RBFL.)



“Super Slider” freestanding dinette table and (2) chairs with storage compartments.



Fully adjustable sliding pantry drawers provide plenty of room for your favorite snacks and vittles!
(Not available on 29KSRE or 31RKCL.)



15,000 BTU **Total Comfort™** central air conditioning system is engineered and ducted to effectively cool all living areas.
(Shown with optional fluorescent lights & Create-A-Breeze™ vent.)



SuperStorage™ bedroom wardrobe with (2) full-width shoe racks and top shelf cedar lining.



OPTIONAL FEATURES

Air Conditioner & Heating

Second 13,500 BTU Brisk AC Located in Bedroom

Wire & Brace for Second AC in Bedroom

Appliances & Accessories

CSA (Canadian Dealers Only)

22" Convection Microwave & Three-Burner Plate

13" Color TV in Bedroom

13" Color TV in Kitchen (38SDKC)

10 Cu. Ft. Refrigerator w/ Thermostat

Electric Fireplace (Not Available on 29KSRE)

Icemaker Added to Refrigerator (Not Available on 33RLPK)

Prep for Ground Satellite Dish w/ Phone, TV Jack and Recept

Two-Piece Washer & Dryer – Includes Prep (Not Available on 29KSRE)

One-Piece Washer & Dryer – Includes Prep (29KSRE)

Prep for Roof Mounted Satellite Dish

Pull Out TV Swivel/Slide Tray (Not Available on 29KSRE, 33RLPK or 38SDKC)

Convenience Package:
Pillowtop Mattress, Sofa & Bed Pillows, Floor Safe, Hair Dryer, Coffee Maker & Cordless Vac

Cabinets & Furniture

Booth Dinette w/ (2) Drawers

First Rocker/Glider Recliner (In Lieu of Standard)

Second Rocker/Glider (In Lieu of Standard)

Island Kitchen Base Cabinet (32RLKS)

Kitchen Countertop Extension (Not Available on 29KSRE or 32RLKS)

Folding Dinette Chairs (2)

Fixed Dinette Chairs (2)

Electrical Features

7.0 kW Onan® Generator w/ Auto Changeover – Includes Prep

Generator Prep (Includes On/Off Switch, 20 Gal. Fuel Tank & Gauge)

Solar Prep (Includes Wire from Roof to Battery Compartment)

Battery Disconnect

Fluorescent Ceiling Lights Throughout

Exterior Features

Bike Rack Carrier

Cargo Net in Pass-Through Storage

Gelcoat Fiberglass Exterior

Pull-Out Storage Tray in Pass-Through (Not Available on 29KSRE)

Rear Independent 12V Power Stabilizer Jacks (In Lieu of Standard)

Detachable Rear Ladder

Interior Features

Simulated Plank Floor in Kitchen & Foyer

Second Teflon® Sink Cover

Plumbing/Bath Features

Exterior Shower

Fiberglass Tub w/ Molded Seat & Glass Door (In Lieu of Shower)

12V Heat Pads for Holding Tanks (Not Available CSA)

Towable Chassis Features

3" Non-Adjustable Lift Kit

MOR/ryde® Rubber Pin Box

Polished Aluminum Wheels

Construction Features

PolarPak R-19™ Insulation in Roof, Floor, Front & Rear End Caps

2006 CYPRESS FIFTH WHEEL

STANDARD FEATURES

Air Conditioning & Heating

15,000 BTU Total Comfort™ Central Air Conditioner

(2) 30-lb. LP Gas Bottles w/ Automatic Regulator

35,000 BTU Furnace w/ In-Floor Ducted Heat

LP Leak Detector

Appliances & Accessories

10 Gal. Gas/Electric DSI Water Heater

Microwave

Entertainment Package:

27" Color TV & Surround Sound System w/ DVD & CD Players, Plus AM/FM Stereo Tuner

8 Cu. Ft. Refrigerator w/ Thermostat

Flush-Mount Three-Burner Rangetop w/ Piezo Ignition

22" Oven

Metal Bi-fold Range Cover

Cable TV Connection w/ RG-6 Coax

Living Room Ceiling Fan

Corian® Knife Block Behind Range

Hardwood Raised Panel Refrigerator Front

Magazine Rack in Water Closet (32RLKS, 34DBCK and 39RBFL)

Paper Towel Holder in Kitchen

Range Hood w/ Light & Fan

Phone Jack

TV Antenna w/ Power Booster & (2) Interior Jacks

Bedroom Speakers (2) w/ ON/OFF Toggle Switch

Cabinets & Furniture

Hardwood Raised Panel Cathedral Overhead Cabinet Doors

Pre-drilled and Screwed, Vinyl Wrapped Lumbercore Cabinetry

Hide-A-Bed Sofa w/ Foot Rests (Not Available on 39RBFL)

Rocker Recliner(s)

Bar Stools (37SKCL)

Chair End Table w/ Magazine Rack (Not Available on 32RLKS, 34DBCK and 39RBFL)

Dinette/Sofa Slide Overhead Cabinet w/ Décor Glass

Metal Drawer Guides

"Super Slider" Freestanding Dinette Table w/ (2) Chairs

Laminate Kitchen & Bath Countertops w/ Oak Edging

Acrylic Kitchen & Bath Sinks

SuperStorage™ Bedroom Wardrobe w/ (2) Full-Width Shoe Racks & Top Shelf Cedar Lining

Hydraulic Lifts on Bed Top

Laundry Hamper w/ Cedar Lining

Fully Adjustable Sliding Pantry Drawers w/ Shelf (Not Available on 29KSRE or 31RKCL)

Living Room Mirror

Windows, Awnings & Vents

Double-Pane, Tinted Safety Glass Windows

Create-A-Breeze™ Vent w/ Automatic Lift & Switch In Kitchen

Create-A-Breeze™ Vent w/ Automatic Lift & Switch Over Bathroom Sink

Décor Choices

Lapis	Sandstone
Willow	Amethyst

Electrical Features

12V Lighting Throughout

50 Amp Electrical Service w/ Detachable Cord

55 Amp Converter

Convenience Lights at:

Main Entry Door, Entry Door Step, Sewer Hook-Up, Hitch & Water Works Compartments

Decorative Globe Light Over Dinette

Dual Battery Box Compartment

Dual Exterior Security Lights

Fluorescent Light Over Kitchen Sink

Lighted Exterior Storage Compartments

Wall Reading Lights in Living Area Slideouts

Exterior Features

30" Radius Entry Door

BriteTEK™ Roof w/ "Walkable" Decking & Radius Aluminum Roof Wrap

Cargo Hook in Exterior Storage Area

Extendable Grab Handle at Entrance Door

Filon® Fiberglass Exterior Sides

Gelcoated Fiberglass End Caps

Molded Gooseneck & Pass-Through Area

Molded Fender Wells

Power Front Jacks

Quick Release Pin for Front Jack Legs

Rear Skid Bars Prepped for Bike Rack Attachment

Rear Stabilizer Jacks

Triple Entrance Door Step

Heated Basement Storage Compartment

Dedicated Compartment in Basement for Utilities

Pass-Through SuperStorage™

Interior Features

Carpeting w/ High-Density Padding in Living Room & Bedroom

Vinyl Floor in Kitchen, Foyer & Bath

Fire Extinguisher, Smoke Detector & Carbon Monoxide Detector

Day/Night Pleated Window Shade w/ Lambrequins in Living Room & Bedroom

Decorative Wall Border

Interior Assist Handle at Main Entry Door

Kitchen Wastebasket

Lazy Susan in Kitchen Overhead Cabinet (Not Available on 29KSRE, 32RLKS or 33RLPK)

Quilted Bedspread w/ Shams

Quilted Fabric Headboard

Molded Silverware Divider Tray

Teflon® Sink Cover



www.Morryde.com



www.Thetford-Norcold.com

Plumbing/Bath Features

Bath Accessories:

Toilet Paper Holder, Toothbrush Holder, Soap Dish, Towel Bar, Towel Ring & (2) Robe Hooks

One-Piece Fiberglass Shower w/ Molded Seat & Glass Enclosure

High Rise Kitchen Faucet

Medicine Cabinet w/ Deluxe Lighting

Monitor Panel

Sewage Holding Tank Rinse

Sewage Hose Storage Tray

Lighted, Heated and Enclosed Exterior Water Works Compartment

Late Night Hook-Up Light at Termination Point

Thetford™ Aqua Magic Toilet

Shower Courtesy Light

In-line Water Filter

Water Heater Bypass

Construction Features

12" I-Beam Frame

5/8" Structurewood Floor Decking

Aluminum Framed Sidewalls, Roof, Front & Rear on 16" Centers

Fully Heated & Insulated Holding Tanks

Enclosed Underbelly w/ 4'x8' Sheets of Aluminum Laminated to 5/8" Bead Foam Insulation

Extended Pin Box

Composite R-Values of...

Roof R-13, Sidewall R-8, Floor R-14

Windows, Awnings & Vents

Dark Tinted Safety Glass Windows

Carefree® Fiesta Side Awning

Create-A-Breeze™ Vent w/ Automatic Lift in Water Closet

Bathroom Window, Blind and Valance

Shower Skylight

Chassis Features

Undermounted 16" G-rated Spare Goodyear® Tire w/ Lift Kit

MOR/ryde® Rubber Equalizer Suspension w/ Shocks & Wet Bolts

EZ Lube® Axles

16" G-rated Goodyear® Tires

NEWMAR CORPORATION

355 N DELAWARE ST
PO BOX 30
NAPPANEE IN 46550-0030
574-773-7791 Fax 574-773-2895
www.newmarcorp.com



NEWMAR QUALITY: A WAY OF LIFE

Your Official Cypress Dealer:

Cypress on cover shown with optional polished aluminum rims. Some features in our literature are optional. Colors and finishes are photographic representations. The actual materials may look different. Prices, specifications and floorplans are subject to change at Newmar's discretion, without prior notice or obligation. Please see your dealer for actual samples and specifications. ©2005 Newmar Corporation. Litho in USA. NEW21005 7/05-15M