

2006 MOUNTAIN AIRE DIESEL PUSHER

2006 MOUNTAIN AIRE

DIESEL PUSHER

by Newmar





We're keeping it simple.
On a grand scale.

This year, we've got big plans.
We're thinking big. Living big.
Going new places. Doing new things.
And letting the details take care of themselves.

This year, we're ready for the Mountain Aire.





Sofa

Our ultra-comfortable living-room sofa has a large storage drawer concealed in the base. For added elegance, we've created a new sculptured carpet design.



GE Profile™ Advantium™ Oven

Select this convection/microwave option, and you get GE's award-winning Speedcook technology — for perfectly cooked meals every time.



Newmar's legacy lives on in new ways.

All of us at Newmar take special pleasure in offering this extraordinary motorhome. What sets the 2006 Mountain Aire apart from the pack is its perfect harmonizing of form and function, its breadth of high-end features. Select models are even available with a fireplace. It's all about innovation—and keeping an eye for the details that make RV living come alive. People trust Newmar for this. It's our legacy to each new generation of RV enthusiasts.

Richard E Parks

Richard E. Parks
President, Newmar Corporation





Fisher and Paykel DishDrawer®
This optional, large-capacity appliance blends beautifully with your surrounding cabinetry, disappearing when not needed, yet ready when you are for serious dishwashing.

Norcold® Four-door Refrigerator
With its integrated icemaker and water dispenser, this Mountain Aire option brings added homestyle convenience to your kitchen.



Your Mountain Aire Kitchen

Polished Corian® countertops. Undermounted sinks with single-lever faucets and filtered drink dispensers. Upscale appliances. Generous cabinet space. All contribute to making your Mountain Aire kitchen the hub of a truly enriching RV lifestyle.



Bathroom Amenities

Easy-cleaning, polished Corian® countertops, ample cabinet space and a decorative glass shower door are but a few of the Mountain Aire bathroom's thoughtful conveniences.



Sweet Sleep

Depending on the floorplan, Mountain Aire bedrooms offer king or queen beds with a quilted headboard and bedspread, a reverse sham and accent pillows. The bed lifts up to reveal a large bed-base storage area.

A True Design for Living

Mountain Aire's open, airy floorplans are especially conducive to living "the good life." Move around freely. Settle into the plush, oversized seating and relax. Or enjoy such options as a Sony® flatscreen color TV and a built-in fireplace.







Exterior Entertainment

A popular option, this enclosed system includes an LCD flatscreen color TV mounted on a swing-out arm, a Sony® AM/FM stereo with a CD player and two speakers.

End-cap Designs

Mountain Aire's clean, crisp exterior styling gets a boost from its striking front and rear end caps. They harmonize the various exterior elements and give the coach a sleeker look.



Driver and Passenger Seats

Ostrich-embossed leather seats with power lumbar support, heat and eight-way power adjustment keep you comfortable mile after mile.

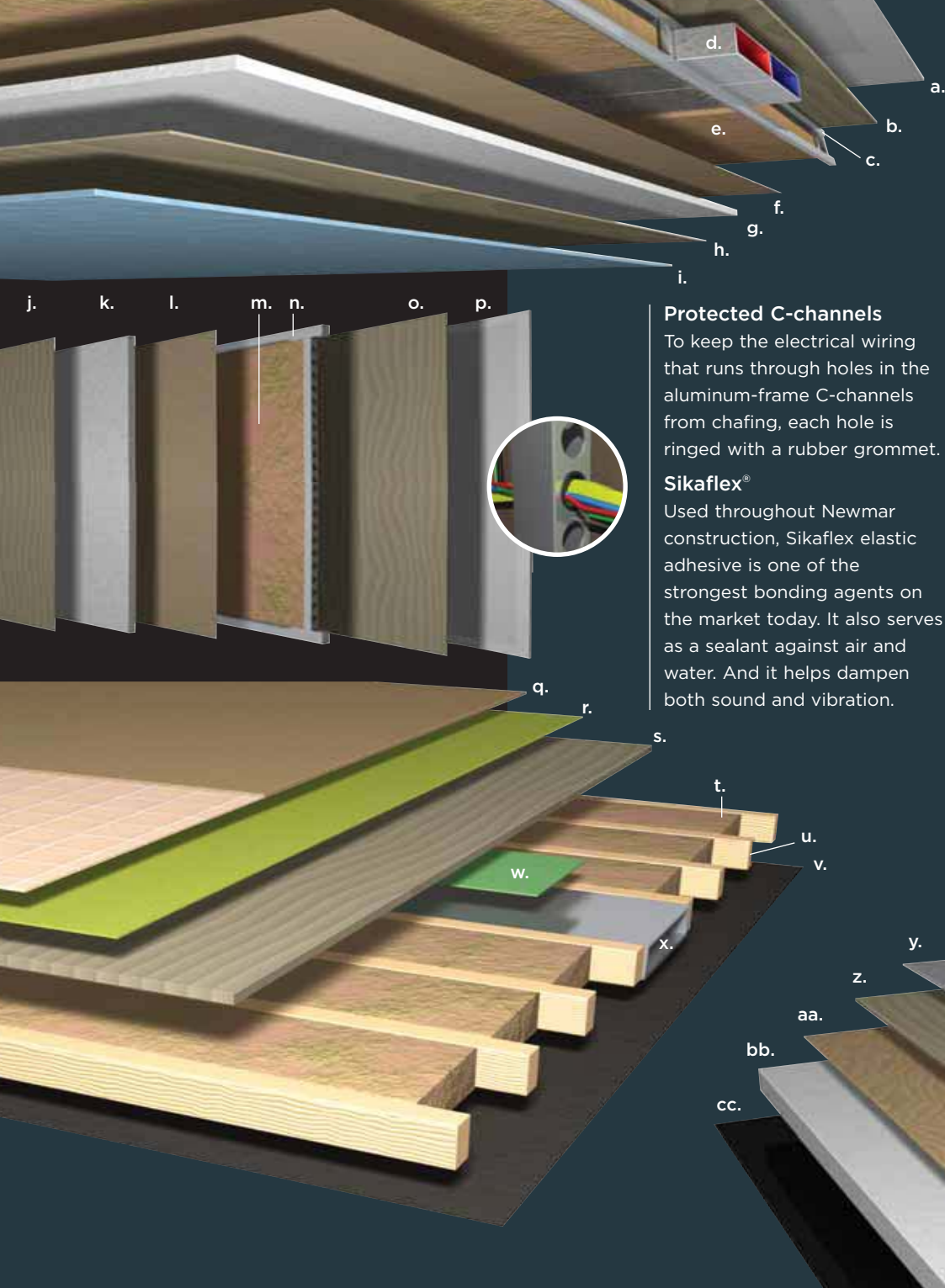
Keyless Entry

Extra convenience and security are yours with this personally programmable keyless-entry door-pad.

Pass-through Storage

Optional slideout trays in the basement's expansive pass-through storage compartment make it easier to stow and retrieve items from either side of the coach. Side-hinged swing-out doors give you easy access.





Ceilings: R-value = 16

- a. One-piece Molded Fiberglass Roof
- b. 9 mm Wood Decking
- c. Aluminum Roof Truss
- d. A/C Ducting
- e. Fiberglass Batten Insulation
- f. Kraft Paper Vapor Barrier
- g. 5/8" Bead Foam
- h. 3/16" Panel
- i. Padded Vinyl Overlay

Walls: R-value = 11

- j. 3/16" Plywood Interior Wall
- k. 5/8" Bead Foam
- l. Kraft Paper Vapor Barrier
- m. Fiberglass Batten Insulation
- n. Aluminum Framing with 3/2" Header
- o. 3/16" Plywood Exterior Wall
- p. Composite One-piece Gelcoat Exterior Sidewall

Flooring: R-value = 16

- q. Carpet/Tile
- r. Carpet Padding
- s. 5/8" Floor Decking
- t. Fiberglass Batten Insulation
- u. 2" x 3" Wood Framing
- v. Polyethylene Moisture Barrier
- w. Foam Panels (Noise Reduction)
- x. Aluminum Ducting

Basement: R-value = 4

- y. Cargo Liner
- z. 3/8" Floor Decking
- aa. 3/16" Luan Panel
- bb. 1 1/2" Bead Foam
- cc. Aluminum Sheetting (Prevents Distortion)

Protected C-channels

To keep the electrical wiring that runs through holes in the aluminum-frame C-channels from chafing, each hole is ringed with a rubber grommet.

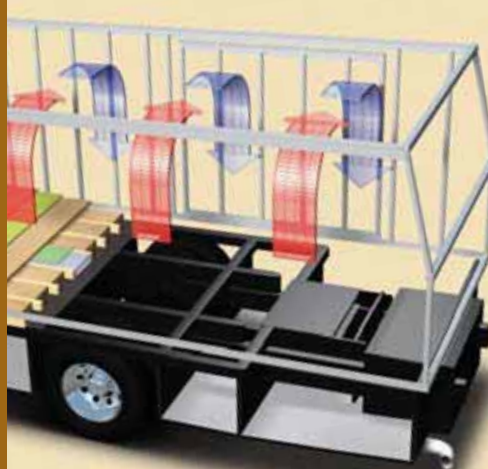
Sikaflex®

Used throughout Newmar construction, Sikaflex elastic adhesive is one of the strongest bonding agents on the market today. It also serves as a sealant against air and water. And it helps dampen both sound and vibration.



Newmar Express Limited Warranty

For your protection and peace of mind, we at Newmar back your Mountain Aire Diesel Pusher with one-year/unlimited-mileage warranty coverage: The Newmar Express Limited Warranty. Ask your dealer for an explanation and a copy of the warranty's complete terms.



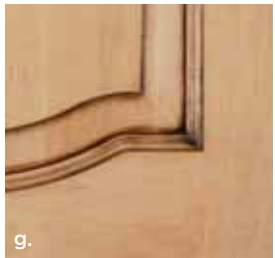
Newmar Total Comfort™ Central Air Conditioning

Experience RV air conditioning just like that found in site-built homes. Newmar's Total Comfort Central Air Conditioning is actually two separate, fully ducted systems: one to distribute incoming cool air, the other to quickly and effectively remove warm air from every living area.

16" On-center Framing

Just like a fine site-built residential home, your Newmar home is framed 16 inches on center, which allows the best placement of outlets, switches and other components.





Interior Colors

- a. Black Pearl
- b. Caribbean Green
- c. Cashmere
- d. Cinnabar

Finishes and Woods

- e. Oak Hardwood Cabinetry, Standard
- f. Coastal Cherry Hardwood Cabinetry
- g. Light Glazed Maple Hardwood Cabinetry
- h. Velvet Cherry Hardwood Cabinetry

Some features shown in our literature are optional. Colors and finishes are photographic representations. The actual materials may look different. Prices, specifications and floorplans are subject to change at Newmar's discretion, without prior notice or obligation. Please see your dealer for actual samples and specifications.



Black Pearl



Caribbean Green



Cashmere



Cinnabar

Full-Paint Masterpiece Finish™

Newmar's Full-Paint Masterpiece Finish creates an exterior of stunning beauty and incredible endurance—a true work of art. As industry leaders in applying full body paint to motorhome coaches, we at Newmar are pleased to offer the Full-Paint Masterpiece Finish as a Mountain Aire Diesel Pusher standard.

Diamond Shield

Diamond Shield Front Paint Protection Film is standard on all Mountain Aire Diesel Pushers featuring the Full-Paint Masterpiece Finish. This film protects against stone chips, scratches and bug acids and keeps the Full-Paint Masterpiece Finish looking new.



www.diamond-shield.com



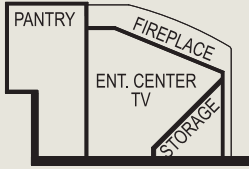
www.spartanchassis.com



www.sony.com

Our commitment is to provide you a recreational vehicle of the highest quality. These are some of the top manufacturers who help us fulfill this commitment by supplying us with superior components.

Floorplans & Options



J331 | Fireplace
4309



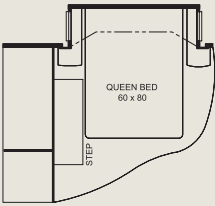
J581 | 56" Entertainment
Center
4303



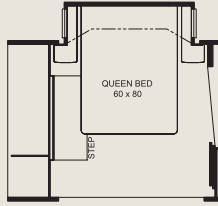
J581_3 | 56" Entertainment
Center
4034, 4140



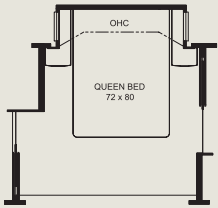
J581_5 | 56" Entertainment
Center
4307



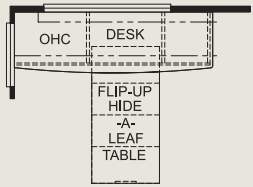
K030_4 | Queen Bed
4033, 4034, 4140,
4306, 4309



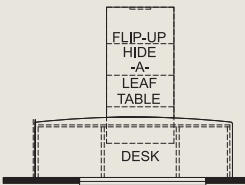
K030_5 | Queen Bed
4301, 4304



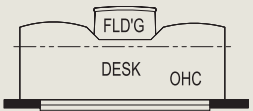
K030_6 | Queen Bed
4307



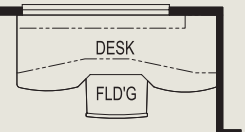
K122 | Dinette/Computer
Station Combo
4032, 4033, 4140, 4141,
4301, 4304, 4307



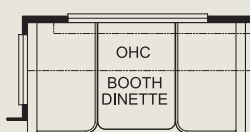
K122_2 | Dinette/Computer
Station Combo
4034, 4306



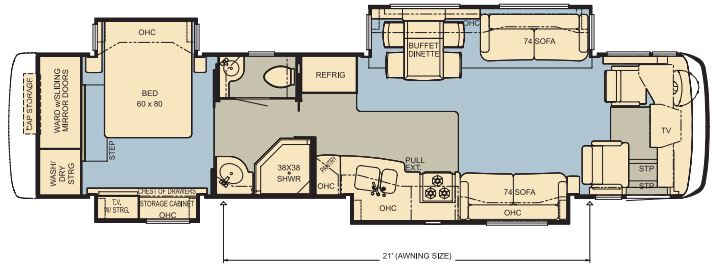
K328 | 56" Desk
4034, 4140



K328_2 | 56" Desk
4033



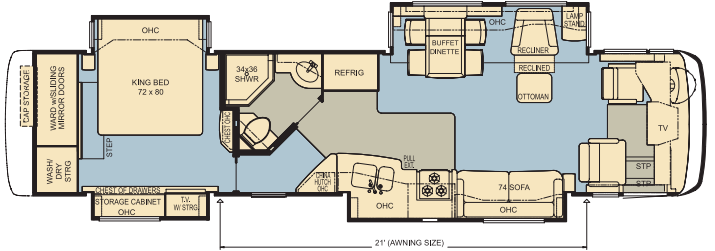
K421 | Booth Dinette
4032, 4033, 4140, 4141,
4301, 4304, 4307



MADP 4032
Options: K122, K421, K422,
K542, K916

Length: 40' 6"
Width: 101.5"

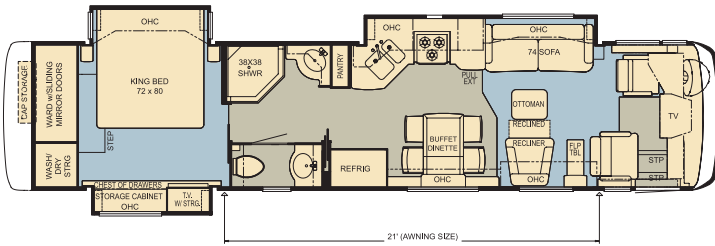
Unique Attributes:
Extra Bedroom Storage
Storage Shelves Recessed
Into Rear Cap
Two 74" Sofas



MADP 4033
Options: J581, K030_4,
K122, K328_2, K421, K422,
K542, K916

Length: 40' 6"
Width: 101.5"

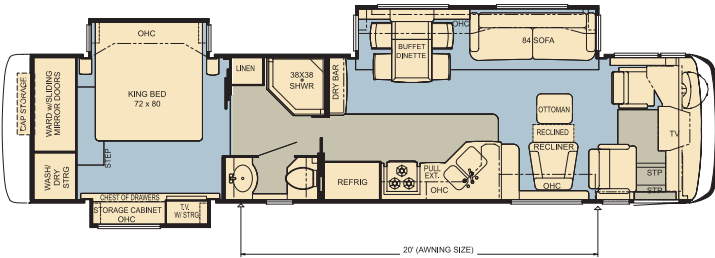
Unique Attributes:
Angled Passageway
China Hutch
Recliner with Ottoman



MADP 4034
Options: J581_3, K030_4,
K122_2, K328, K422_2,
K542_2, K923

Length: 40' 6"
Width: 101.5"

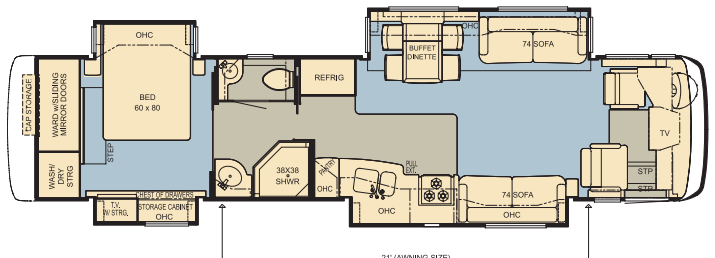
Unique Attributes:
King Bed
Recliner with Ottoman
Two Bathroom Sinks



MADP 4140
Options: J581_3, K030_4,
K122, K328, K421, K422,
K542, K800, K923, P370_6

Length: 40' 6"
Width: 101.5"

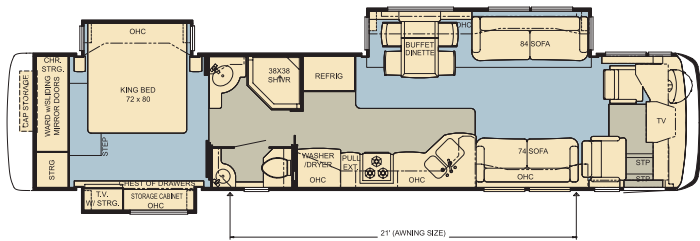
Unique Attributes:
84" Sofa
Bathroom Linen Closet
King Bed



MADP 4141
Options: K122, K421, K422,
K542, K916

Length: 40' 6"
Width: 101.5"

Unique Attributes:
Storage Shelves Recessed
Into Rear Cap
Two 74" Sofas
Two Bathroom Sinks

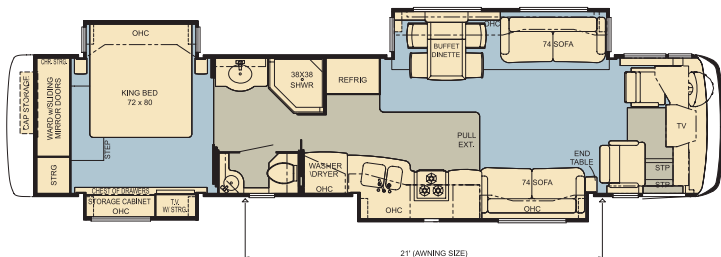


MADP 4301

Options: K030_5, K122, K421, K422, K542, K800, K917, K918

Length: 42' 6"
Width: 101.5"

Unique Attributes:
King Bed
Spacious Kitchen
Two Sofas

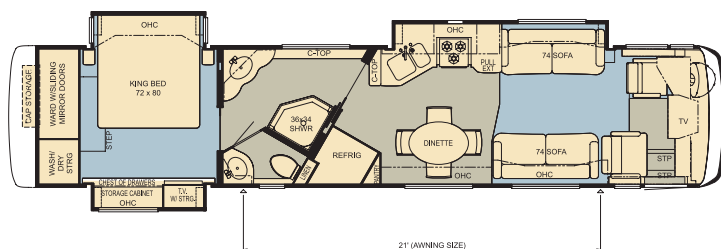


MADP 4304

Options: K030_5, K122, K421, K422, K542, K916, P370_7

Length: 42' 6"
Width: 101.5"

Unique Attributes:
King Bed
Storage Shelves Recessed
Into Rear Cap
Two 74" Sofas

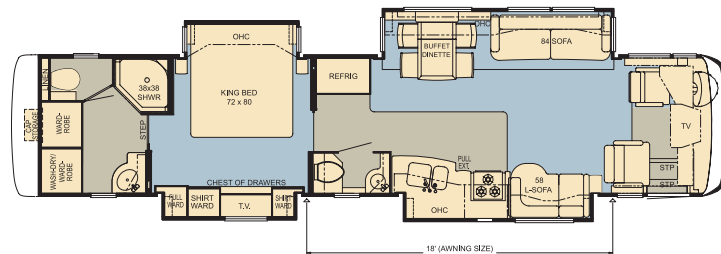


MADP 4306

Options: K030_4, K122_2, K917

Length: 42' 6"
Width: 101.5"

Unique Attributes:
King Bed
Oval Freestanding Dinette
Two 74" Sofas

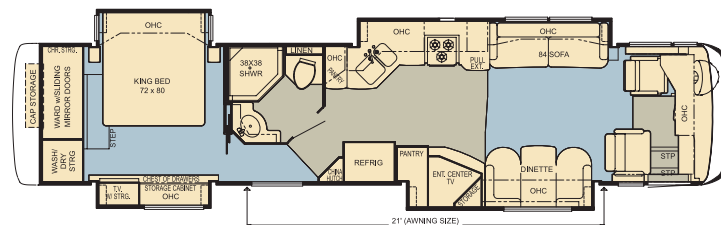


MADP 4307

Options: J581_5, K030_6, K122, K421, K422, K542, K800, P370_8

Length: 42' 6"
Width: 101.5"

Unique Attributes:
King Bed
L-lounge Sofa
Two Bathrooms

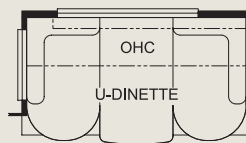


MADP 4309

Options: J331, K030_4, P370_9

Length: 42' 6"
Width: 101.5"

Unique Attributes:
Angled Passageway
Pantry
U-dinette



K422 | U-dinette
4032, 4033, 4140, 4141,
4301, 4304, 4307



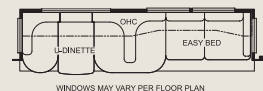
K422_2 | U-dinette
4034



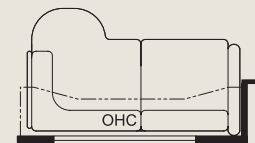
K542 | Round Dinette
4032, 4033, 4140, 4141,
4301, 4304, 4307



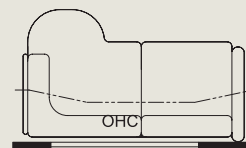
K542_2 | Round Dinette
4034



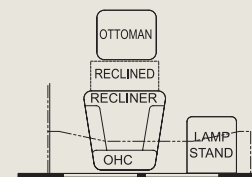
K800 | Combination U-dinette
and L-sofa
4140, 4301, 4307



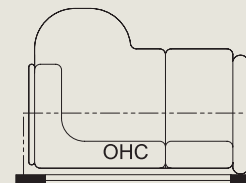
K916 | 72" L-lounge
4032, 4033, 4141, 4304



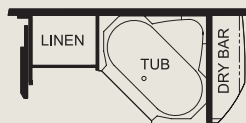
K917 | 72" L-lounge Sofa
4301, 4306



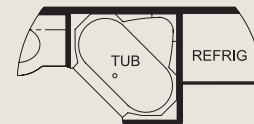
K918 | Recliner and Ottoman
with Lampstand
4301



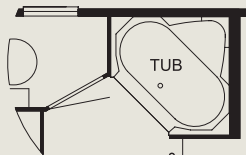
K923 | 58" L-lounge Sofa
4034, 4140



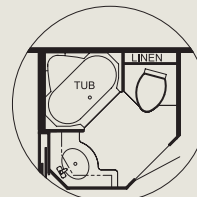
P370_6 | Corner Bathtub
4140



P370_7 | Corner Bathtub
4304



P370_8 | Corner Bathtub
4307



P370_9 | Corner Bathtub
4309

Some features shown in our literature are optional. Colors and finishes are photographic representations. The actual materials may look different. Prices, specifications and floorplans are subject to change at Newmar's discretion, without prior notice or obligation. Please see your dealer for actual samples and specifications.

Features

STANDARD FEATURES

CHASSIS FEATURES

- Spartan® Mountain Master GT Chassis with IFS
- Cummins® ISL 400 hp
- Two-stage Engine Compression Brake
- Adjustable Pedals
- Tag Axles on 41' and 43' Floorplans
- Coated Aluminum Wheels
- Four-point Hydraulic Leveling Jacks with Automatic Control and Air Dump
- Cruise Control
- Tilt-and-Telescope Steering with VIP SMART Wheel
- Recessed Fuel Fills with Crossover to Fill from Either Side
- Back-up Alarm
- Anti-lock Braking System
- Electronic Chassis Information Display in Dash

AIR CONDITIONING & HEATING

- Two 15M Penguin™ Heat Pump Central Air Conditioners
- LP Furnace with In-floor Ducted Heat
- Dash Heater and High-output Air Conditioner
- LP Leak Detector

APPLIANCES & ACCESSORIES

- 30" Convection Microwave Oven
- Three-burner Recessed Cooktop with Electronic Ignition
- Polished Corian® Range Cover
- Dometic® 12 Cu. Ft. Refrigerator with Icemaker
- Hardwood Raised-panel Refrigerator Front
- 12 Gal. Gas/Electric Water Heater with Direct-spark Ignition
- One-piece Washer/Dryer Prep*
- Sony® Flatscreen Color TV in Living Area
- Sony Flatscreen Color TV in Bedroom
- AM/FM Dash Radio with 6-disc CD Player and Combination Rearview Color Monitor System
- Sony Surround Sound System with AM/FM Radio, VCR, DVD Player and Subwoofer
- TV Antenna with Power Booster, One Exterior Jack and Two Interior Jacks
- "TV Antenna is Up" Warning Light
- Satellite Prep—Phone, TV Jack and Receptacle
- Exterior TV Jack on Door Side
- Telephone Connection with Phone Jacks in Living and Dash Area
- Two Bedroom Radio Speakers with On/Off Switch
- Safe
- Roof-mounted Air Horns
- 10 Bc Fire Extinguisher, Carbon Monoxide and Smoke Detectors

CABINETS & FURNITURE

- Oak Hardwood Cabinets with Raised-panel Double Cathedral Cabinet Doors
- Hidden-leaf Dinette Table with Polished Corian Insert Top and Four Chairs (Two Fixed, Two Folding)*
- Distressed-leather/Vinyl U-dinette with Polished Corian Insert Table Top*
- Polished Corian Countertop with Undermounted Sink and Flush Sink Covers in Kitchen
- Polished Corian Countertop with Integrated Bowl in Bathroom
- Drawers with Metal Guides
- Knife Hinges on Cabinet Doors
- Villa® Furniture
- Leather/Vinyl Heated Driver/Passenger Seats with Eight-way Power, Power Lumbar and Power Footrest on Oversized Passenger Seat
- Lifts on Bed Top to Access Storage Area
- Cedar Paneling in Bedroom Wardrobe
- Storage Shelves Recessed into Rear Cap of Rear-wardrobe Floorplans

- Luxurious Pillowtop Mattress with Quilted Bedspread
- King Bed*

ELECTRICAL FEATURES

- 8.0 kW PowerTech Quiet Series Diesel Generator on Pullout Tray
- 50 Amp Electrical Service with Flexible Cord on Power-cord Rewind Reel
- Four 6 Volt House Batteries on Pullout Tray
- Battery Disconnect Switch
- 110 Volt Receptacle on Door Side
- 5 Watt Solar Panel
- 2000 Watt Inverter
- Emergency Start Switch
- Automatic Generator Start
- Exterior Security Lights, One on Each Side
- Midship Side Turn Signals
- Recessed Docking Lights
- Switched Receptacle for Engine Block Heater
- Fluorescent Lights Throughout
- Lighted Wardrobe
- Slideout Information Voice Module
- Manually Operated Hold-to-Run Slideout Switch
- ICC Light Switch
- Two 12 Volt Auxiliary Receptacles on Dashboard
- Interior Courtesy Lights
- Mood Lights Recessed in Ceiling
- Solar Prep
- Daylight Headlight System
- Map Lights

EXTERIOR FEATURES

- Full-Paint Masterpiece Finish™ with Diamond Shield Front Protective Film
- Large Chrome Convex Exterior Mirrors with Remote Control, Defrost and Turn Signals
- Automatic Entrance Door with Double Step
- Front Entry Door with Power Flush Stepwell Cover
- Side-hinged Baggage Doors (Between Axles on Door Side, Except Door for Exterior Ent. Ctr.)
- Lighted Exterior Storage Compartments Controlled by Interior Master Switch
- 10,000 lb. Towing Hitch
- Lighted Acrylic Assist Handle at Entrance Door
- Rear Protective Tow Guard with Stainless Steel Newmar Name Cutout
- Rear Ladder
- Squeegee in Exterior Compartment
- Undercoating

INTERIOR FEATURES

- Padded Vinyl Ceiling
- Lined Day/Night Pleated Window Shades and Lambrequins
- Mini-blinds in Kitchen and Bath Areas
- Hardwood Fascia on Living Area and Bedroom Slideouts
- Hardwood Window Sills
- Ceramic Floor Tile in Kitchen, Bathroom and Entrance Door Area
- Deluxe Carpeting with High-density Padding in Bedroom and Sculptured Carpet in Living Area
- Raised-panel Interior Passage Doors
- Interior Assist Handle at Main Entrance Door
- Power Driver- and Passenger-side Sun Shades
- Power-activated Sun Visors
- Kitchen Wastebasket

PLUMBING & BATH FEATURES

- Sewage Holding-tank Rinse
- Water Heater Bypass System
- Thetford™ Aria Sculptured China Stool
- Towel Bar, Tissue Holder, Towel Ring and Robe Hook
- Exterior Convenience Wash Station—Hot/Cold Water, Soap and Towel Dispenser

- Fiberglass Bathtub/Shower with Assist Handle and Glass Shower Door
- Monitor Panel
- Monoplex Water Pump Switches Located in Bathroom, and on Exterior, Near Gate Valves
- Water Filter for Entire Unit
- Water Filter with Drink Dispenser at Kitchen Sink
- Automatic Rewind Water-hose Reel
- Delta® Faucets in Kitchen with Waterfall Spout
- Delta® and Price Pfister™ Faucets in Bathroom

CONSTRUCTION FEATURES

- Power Lock Arms on All Slideout Rooms

WINDOWS, AWNINGS & VENTS

- Double-pane Tinted Safety-glass Windows
- Fan-Tastic® Vent with Rain Sensor in Kitchen and Bathroom Areas
- Keyless Entry
- Driver's-side Power Window
- A&E® 9000 Bedroom and Slideout Window Awnings
- A&E Oasis Power Front Entrance Door Awning
- A&E Weather Pro Power Side Awning
- A&E Slideout Awning Covers

OPTIONAL FEATURES

AIR CONDITIONING & HEATING

- Hydronic Zone Heating System (Replaces Water Heater and Furnace)

APPLIANCES & ACCESSORIES

- 30" Speedcook Advantium™ Microwave Oven
- Norcold® 12 Cu. Ft. Front-door Refrigerator with Icemaker and Water Dispenser
- Norcold Freezer on Pullout Tray
- One-piece Washer/Dryer
- Two-piece Washer/Dryer
- Dishwasher in a Drawer Below Three-burner Cooktop
- All-electric Unit with Hydronic Zone Heat, 3100 Watt Inverter with Dometic or Norcold Refrigerator
- Sony 32" LCD Color TV in Front Overhead Cabinet
- XMSM Satellite Radio Capability (Does Not Include Monthly Subscription)
- Navigation System (Displayed on Rearview Monitor)
- Bose® Wave Radio with CD Player and Alarm Clock in Bedroom
- Electric Fireplace*
- External Entertainment Center with 26" LCD TV and AM/FM Radio and CD Player
- KVH® Automatic Satellite without Receiver
- KVH In-motion Satellite without Receiver
- KVH L-3 In-motion Satellite without Receiver
- Entertainment Center with Relocated Living Area TV and Surround Sound System
- TripTek™ Electronic Travel Information (Displayed on Rearview Monitor)
- CB Radio with Antenna
- CB Antenna
- Engine Assist for Water Heater

CABINETS & FURNITURE

- Coastal Cherry Hardwood Cabinets
- Velvet Cherry Hardwood Cabinets
- Light Glazed Maple Hardwood Cabinets
- Distressed-leather/Vinyl Recliner, Ottoman and Lampstand*
- Distressed-leather/Vinyl L-lounge*
- Distressed-leather/Vinyl Sofa*
- Distressed-leather/Vinyl U-dinette*
- Distressed-leather/Vinyl Hide-a-Bed Sofa with Air Mattress*
- Hide-a-Bed Sofa with Air Mattress*
- Distressed-leather/Vinyl Combination U-dinette and L-lounge*

- Distressed-leather/Vinyl Driver and Passenger Seats
- Booth Dinette with Forward-facing Seatbelts
- Combination Desk/Dinette Table with Two Fixed Chairs
- Round Hardwood Dinette Table with Four Fixed Chairs*
- Folding Coffee Table
- Desk with Folding Chair
- Center Entrance Door Layout*

ELECTRICAL FEATURES

- 7.5 kW Onan® Quiet Series Diesel Generator

- Pre-wire for Freezer
- Energy Management System
- Roof-mounted Spot Light

EXTERIOR FEATURES

- Large Storage Tray with Access from One Side or Either Side
- Small Storage Tray
- Power Baggage Door Locks

INTERIOR FEATURES

- Simulated Plank Floor in Entry, Kitchen, Bathroom and Living Area with Custom Area Rug

- Hardwood Lambrequin Window Treatment in Living Area

PLUMBING & BATH FEATURES

- Fold-down Shower Seat
- Corner Bathtub
- 110 Volt Heat Pads for Holding Tanks

WINDOWS, AWNINGS & VENTS

- Girard® Power Side Awning with Wind Sensor and Remote Control

* Check with Dealership on floorplan availability.

Specifications

FLOORPLAN SPECIFICATIONS

FLOORPLAN	APP. OVERALL LENGTH ¹	WIDTH	APP. OVERALL HEIGHT	INTERIOR WIDTH	INTERIOR HEIGHT	GREY	SEWAGE	WATER	LP	FURNACE	WATER HEATER
MADP 4032	40' 6"	101.5"	12' 7"	95.5"	84"	65 gal.	45 gal.	105 gal.	32 gal.	42,000 Btu	12 gal.
MADP 4033	40' 6"	101.5"	12' 7"	95.5"	84"	65 gal.	45 gal.	105 gal.	32 gal.	42,000 Btu	12 gal.
MADP 4034	40' 6"	101.5"	12' 7"	95.5"	84"	65 gal.	45 gal.	105 gal.	32 gal.	42,000 Btu	12 gal.
MADP 4140	40' 6"	101.5"	12' 7"	95.5"	84"	65 gal.	45 gal.	105 gal.	32 gal.	42,000 Btu	12 gal.
MADP 4141	40' 6"	101.5"	12' 7"	95.5"	84"	65 gal.	45 gal.	105 gal.	32 gal.	42,000 Btu	12 gal.
MADP 4301	42' 6"	101.5"	12' 8"	95.5"	84"	65 gal.	45 gal.	105 gal.	32 gal.	42,000 Btu	12 gal.
MADP 4304	42' 6"	101.5"	12' 8"	95.5"	84"	65 gal.	45 gal.	105 gal.	32 gal.	42,000 Btu	12 gal.
MADP 4306	42' 6"	101.5"	12' 8"	95.5"	84"	65 gal.	45 gal.	105 gal.	32 gal.	42,000 Btu	12 gal.
MADP 4307	42' 6"	101.5"	12' 8"	95.5"	84"	65 gal.	45 gal.	105 gal.	32 gal.	42,000 Btu	12 gal.
MADP 4309	42' 6"	101.5"	12' 8"	95.5"	84"	65 gal.	45 gal.	105 gal.	32 gal.	42,000 Btu	12 gal.

SPARTAN® CHASSIS INFORMATION

FLOORPLAN	ENGINE HP	AXLE RATIO	FUEL CAP.	WHEELBASE	FRONT GAWR ²	REAR GAWR ²	TAG GAWR	GVWR ²	GCWR ²	APP. UVW	APP. NCC
MADP 4032	400	4.88	150 gal.	276"	14,200 lb.	20,000 lb.	—	34,200 lb.	44,200 lb.	29,887 lb.	4,313 lb.
MADP 4033	400	4.88	150 gal.	276"	14,200 lb.	20,000 lb.	—	34,200 lb.	44,200 lb.	30,077 lb.	4,123 lb.
MADP 4034	400	4.88	150 gal.	276"	14,200 lb.	20,000 lb.	—	34,200 lb.	44,200 lb.	28,971 lb.	5,229 lb.
MADP 4140	400	4.88	150 gal.	252"+TAG	14,200 lb.	20,000 lb.	10,000 lb.	44,200 lb.	54,200 lb.	31,796 lb.	12,404 lb.
MADP 4141	400	4.88	150 gal.	252"+TAG	14,200 lb.	20,000 lb.	10,000 lb.	44,200 lb.	54,200 lb.	32,740 lb.	11,460 lb.
MADP 4301	400	4.88	150 gal.	276"+TAG	14,200 lb.	20,000 lb.	10,000 lb.	44,200 lb.	54,200 lb.	32,138 lb.	12,062 lb.
MADP 4304	400	4.88	150 gal.	276"+TAG	14,200 lb.	20,000 lb.	10,000 lb.	44,200 lb.	54,200 lb.	33,142 lb.	11,058 lb.
MADP 4306	400	4.88	150 gal.	276"+TAG	14,200 lb.	20,000 lb.	10,000 lb.	44,200 lb.	54,200 lb.	32,335 lb.	11,865 lb.
MADP 4307	400	4.88	150 gal.	276"+TAG	14,200 lb.	20,000 lb.	10,000 lb.	44,200 lb.	54,200 lb.	33,442 lb.	10,758 lb.
MADP 4309	400	4.88	150 gal.	276"+TAG	14,200 lb.	20,000 lb.	10,000 lb.	44,200 lb.	54,200 lb.	33,242 lb.	10,958 lb.

Lengths, heights, widths and dry weights are approximate. Weight will vary based on optional equipment added to the above base weight.

GAWR: Gross Axle Weight Rating is the maximum permissible weight for an axle.

GVWR: Gross Vehicle Weight Rating is the maximum permissible weight of a fully loaded motorhome.

GCWR: Gross Combination Weight Rating is the value specified by the manufacturer of the vehicle as the maximum allowable loaded weight of this motorhome and any towed trailer or towed vehicle.

UVW: Unloaded Vehicle Weight is the weight of this motorhome as built at the factory with full fuel, engine oil and coolants. The UVW does not include cargo, fresh water, LP gas or dealer-installed accessories.

NCC: Net Carrying Capacity is the maximum weight of all occupants, including the driver, personal belongings, food, fresh water, waste water, LP gas, tools, tongue weight of towed vehicle, dealer-installed accessories, etc., that can be carried by the motorhome.

¹ Lengths do not include the rear ladder.

² Specifications are supplied by chassis manufacturer.

MOUNTAIN MASTER CHASSIS

The Mountain Master chassis is America's most popular, premium, high horsepower diesel pusher. This premium world-class chassis is the flagship of Spartan Chassis, Inc. The Spartan Mountain Master and Mountain Master GT doesn't just lead the way, it paves the way! Experience the power, the superior ride and handling, plus the excellent driving performance with the Spartan Mountain Master chassis. The Mountain Master chassis provides excellent resale value and carries a 36 month, 50,000 mile, no deductible warranty, which includes road side assistance for the entire warranty period. So sit back and enjoy the ride!





NEWMAR CONSTRUCTION

Built to last



NEWMAR SERVICE

Only one call



NEWMAR QUALITY: A WAY OF LIFE

The RVDA Quality Circle Award



For the fourth year in a row, Newmar has won the RVDA's Quality Circle Award, a reflection of feedback obtained from the association's annual dealer satisfaction survey. This is quite an honor — a measure of the trust our dealers and customers place in us. We will continue working to retain that trust.

The Newmar Factory Tour

We would love to have you visit our state-of-the-art production facility in Nappanee, Indiana. That's why we offer factory tours Monday through Friday at 10 a.m. and 1 p.m., Indiana time. Pre-registration is not required but helpful, and certain safety restrictions do apply. For more information, or to pre-register, please call 800-860-0086.

Newmar Corporation
355 N Delaware St
PO Box 30
Nappanee IN 46550-0030
574-773-7791 Fax 574-773-2895
www.newmarcorp.com

Your Official Newmar Dealer: