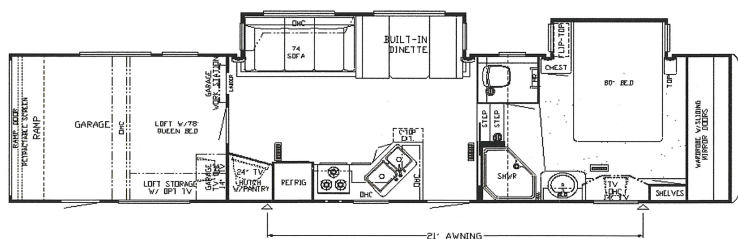
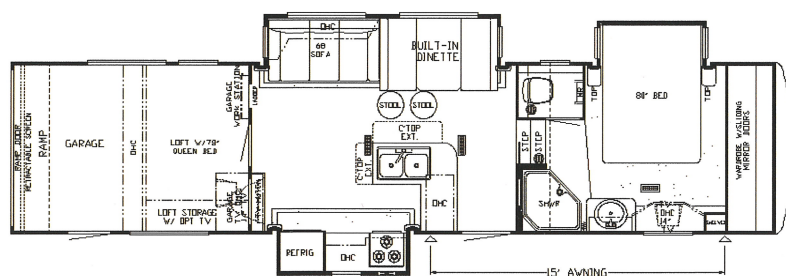


ALL-NEW FIFTH WHEEL TOY HAULER



WHEN YOU KNOW THE DIFFERENCE™



Model	XAFW 38CKTH
TIRE SIZE	ST235/80R16-D
GAWR	5,200
GVWR	19,000
APP. LENGTH	40' 8"
APP. HEIGHT	12' 11"
WIDTH	101"
APP. DRY WEIGHT	15,310
APP. HITCH WEIGHT	3,520
FRESH WATER	105
GREY	84
SEWAGE CAP.	42
APP. HITCH HEIGHT	47"
HEAT CAP.	35,000

Model	XAFW 40CKKB
TIRE SIZE	ST235/80R16-D
GAWR	5,200
GVWR	19,000
APP. LENGTH	40' 8"
APP. HEIGHT	12' 11"
WIDTH	101"
APP. DRY WEIGHT	15,650
APP. HITCH WEIGHT	3,600
FRESH WATER	105
GREY	84
SEWAGE CAP.	42
APP. HITCH HEIGHT	47"
HEAT CAP.	35,000

X-AIRE

Standard Features

- Burnt orange exterior graphics with prepainted skirt
- 15M central air conditioner with cold air ducted into garage area
- 2-30# propane gas bottles with automatic regulator
- Propane gas furnace with in floor ducted heat
- Propane gas leak detector
- 14" Flat screen color TV in bedroom
- 14" Flat screen color TV in garage area
- 24" Virtually flat screen color TV in living room
- 8 cu. ft. Refrigerator
- 12 Gallon gas/electric water heater-direct spark ignition
- 3 Burner range with oven & piezo ignition
- Cable TV connection with RG 6 coax
- Ceiling fan in living room area
- Corian® knife block behind range
- Exterior AM/FM/CD Radio with 2 outside speaker & 2 speakers in garage area
- Hardwood raised panel refrigerator front
- Magazine rack in stool room
- Metal bifold range cover
- Microwave
- Range hood with light & fan
- Roof mount satellite dish prep
- Surround sound with AM/FM radio, DVD, CD, and sub woofer
- TV antenna with power booster with 2 interior jacks
- Hide-A-Bed sofa
- Tuscon oak vinyl wrapped cabinets with hardwood raised panel, cathedral overhead cabinet doors
- Built-in booth dinette
- Drawers with metal guides
- Kitchen countertop extension - on most floorplans
- Laminate countertop in kitchen & bath with top mount acrylic sinks & t-molding edging
- Lifts on bed to access storage area
- Metal storage cabinet with paper towel holder in garage area
- Molded silverware divider tray
- One teflon sink cover
- Pull-out pantry with fixed shelves, standard on most floorplans
- Queen bed-60"x 80"
- Recliner/sofa overhead with wood side hinge cabinet doors
- Shoe storage shelves in front wardrobe
- Two bar stools - standard where shown on floorplan drawing
- 110 Volt exterior recept. on doorside
- 12 Volt lighting throughout
- 50 Amp electrical service with detachable cord
- 55 Amp converter
- 6 Incandescent lights in garage area
- Dual battery box compartment
- Extra TV jack located on the door side for exterior use
- Lights in exterior storage compartments
- Three exterior scare lights, two on door side & one on off doorside
- Wall reading lights in living area slideouts
- 30" Radius main entrance door & 26" door in garage area
- BriteTEK™ roof with "walkable" decking & radius aluminum wrap
- Cargo hook in exterior storage area
- Extendable grab handle at main entrance door with small grab handle at garage door
- Fueling station for garage area
- Gel-coated fiberglass exterior sides

- Gel-coated fiberglass front cap & rear cargo door
- Power front jacks
- Quick release pin for fifth wheel jacks
- Rear stabilizer jacks, 1 pair
- Side ladder
- Triple step for entrance door
- Carpeting with high density padding in living room slide out & bedroom area
- Vinyl floor in kitchen, living room & bathroom area with wood grain laminate steps
- Decorative wall border
- Flat panel interior passage doors
- Interior assist handle on main entrance door
- Kitchen wastebasket
- Mini blind window shades in kitchen area & bath
- Pleated window shades with jabots in living room, bedroom & valances in garage area
- Quilted bedspread with shams
- Quilted fabric headboard
- Vinyl covered ceiling panels
- ABS tub/shower with glass door
- Bath accessories - toilet paper holder, soap dish & towel bar
- Demand water system with shurflo pump
- High-rise kitchen faucet with separate pull-out sprayer
- Hot/Cold exterior faucet with 15' coil hose & sprayer
- Medicine cabinet with deluxe lighting
- Monitor panel
- Sewage holding tank rinse
- Sewage hose holder, easy access flop down tray
- Thetford™ Aqua Magic Style 2 stool with spray attachment
- Water filter, for entire unit
- Water heater bypass system
- 100" exterior width
- 12" I-Beam frame
- 5/8" Structurewood floor decking
- Aluminum frame sidewalls & roof construction, 16" on center
- Enclosed underbelly with black corrugated plastic ducted heat & fiberglass insulation
- Extended pin box
- Insulation composite R-Values R-21 roof, R-8 sidewalls, R-24 floor
- Manually operated hold to run slide out switch
- MOR/ryde® rubber equalizers with easy lube axles
- PolarPak R19 fiberglass insulation in roof, floor, front & rear end caps
- Carefree® fiesta side awning
- Create-A-Breeze™ vent with automatic lift bathroom & loft area
- Ram air vent system in garage area
- Safety glass windows with 20% tint
- Skylight in bathroom
- Window above main slideout room
- 16" Spare tire
- 16" Tires
- Polished aluminum wheels

Additional Options

- 15M Penguin™ heat pump air conditioner in place of standard
- Extra 13.5M Penguin™ air conditioner in bedroom
- Wire and brace for second air conditioner in bedroom
- 14" Flat screen color TV in loft
- Icemaker added to refrigerator
- Norcold® 10 cu.ft. refrigerator
- 22" Convection microwave & 3 burner plate
- Central vacuum with floor port & deluxe tool kit
- Convenience pkg-floor safe, hair dryer, cordless vac, pillow top mattress & sofa/bed pillows
- Prep for ground tripod satellite dish with phone, TV jack & recept.
- Free standing dinette with two chairs
- King bed, 72" X 80" with King Coil mattress
- Two fixed dinette chairs
- Two folding dinette chairs
- 5.5KW Onan® generator with auto changeover -includes generator prep
- Battery disconnect switch for house battery
- Flourescent ceiling lights
- Generator prep, includes energy command system, fuel tank & gauge
- Solar prep, wire from roof to battery compartment
- One- exterior pull-out storage tray
- Rear 12 volt power twin stabilizer jacks in place of standard
- Simulated plank floor in kitchen and foyer area
- 12 Gallon Gas/Electric water heater
- Shock absorbers
- Heat pads for holding tanks - 12 volt (not avail. on CSA)
- Tub with glass door
- Create-A-Breeze vent with automatic lift in kitchen
- Create-A-Breeze vent with automatic lift over bath sink
- CSA approval for Canadian dealers only
- Double pane tinted safety glass windows
- Screen for rear cargo door
- MOR/ryde® rubber pin box



WHEN YOU KNOW THE DIFFERENCE™

www.newmarcorp.com

or

1.800.860.0086