

ALLSTARSM 2007 || DIESEL MOTORHOME
NEWMAR



ALLSTAR
2007 || DIESEL MOTORHOME



TOY HAULER || FAMILY EDITION || LOFT EDITION

THE ALL STAR DOES IT ALL

This is one versatile, functional and stylish motorhome. Mid-chassis engine placement gives you a choice of three distinct models: a Toy Hauler, a Family Edition and a Loft Edition—not to mention an exterior Super Storage Compartment that holds just about anything you'd care to tote. Leave it to Newmar to make good on the promise of versatile family travel. The All Star is all Newmar. Solid. Dependable. And remarkably innovative. At a price that makes it all yours.



YOUR ALL STAR KITCHEN

Built-in appliances, optional Ericsburg Cherry cabinets with mission-style doors and an undermounted sink help define the All Star kitchen.

KITCHEN DRAWERS

All drawers feature residential-style, full-extension, ball-bearing drawer guides for smooth operation and full access to storage. Added convenience is provided by a standard, molded, silverware divider tray.

NORCOLD® FOUR-DOOR REFRIGERATOR

Sleek design is only part of the picture. With its integrated icemaker, this optional 12-cubic-foot Norcold four-door refrigerator brings true homestyle functionality to your kitchen.

SPACIOUS FAMILY LIVING

The All Star kitchen and dining area are designed for maximum convenience and class. Optional Maple Cream cabinets with mission-style doors, an optional round dinette table with four fixed chairs and a larger dinette window add to the sophistication of this coach. (Family Edition floorplan 4154 shown with round dinette option.)





MISSION CONTROL

All Star's Flexsteel® Ultra Leather cockpit seats provide an added level of comfort with six-way power adjustment, power lumbar support and Ergo-Flex arms. Above the cockpit is a new Sony® home theater system with a single-disc DVD player and a surround-sound receiver.

ALL STAR DASH

Our dash configuration puts you in total command of the road. All gauges and controls are right where you need them. A black-and-white rearview monitor system allows you to see what's behind you.



TOY HAULER



TOY HAULER. Just because you play rough doesn't mean you want to live rough. That's why Newmar created the industry's leading toy-hauling Class A diesel motorhome. Think of it: a temperature-controlled garage with a fueling station, water hose and shop vac...totally separate from fine living quarters as only Newmar builds them. The All Star Toy Hauler has it all.

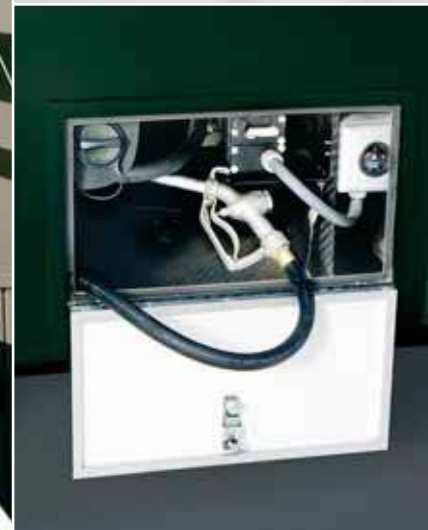
*ATVs provided by Lake City Honda-Kawasaki.



TOY HAULER



STORAGE CAPACITY
Recessed storage compartments open up the garage to accommodate more cargo.



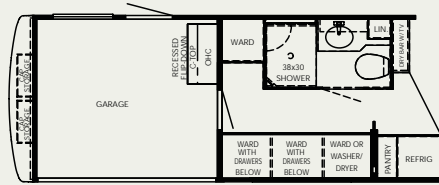
FUEL STATION
Fueling your sport vehicles is easy with this fuel station located next to the auxiliary door.



ALL STAR GARAGE

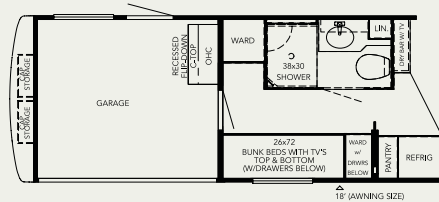
You can use the All Star garage to haul and store a multitude of items. Not something you'd expect to see in a motorhome, this astoundingly spacious garage can hold two four-wheelers, a motorcycle or a golf cart. It features recessed storage, a window, a wall-mounted shop-vac and an auxiliary door. And the floor itself features a non-slip surface to help hold cargo in place.

TOY HAULER



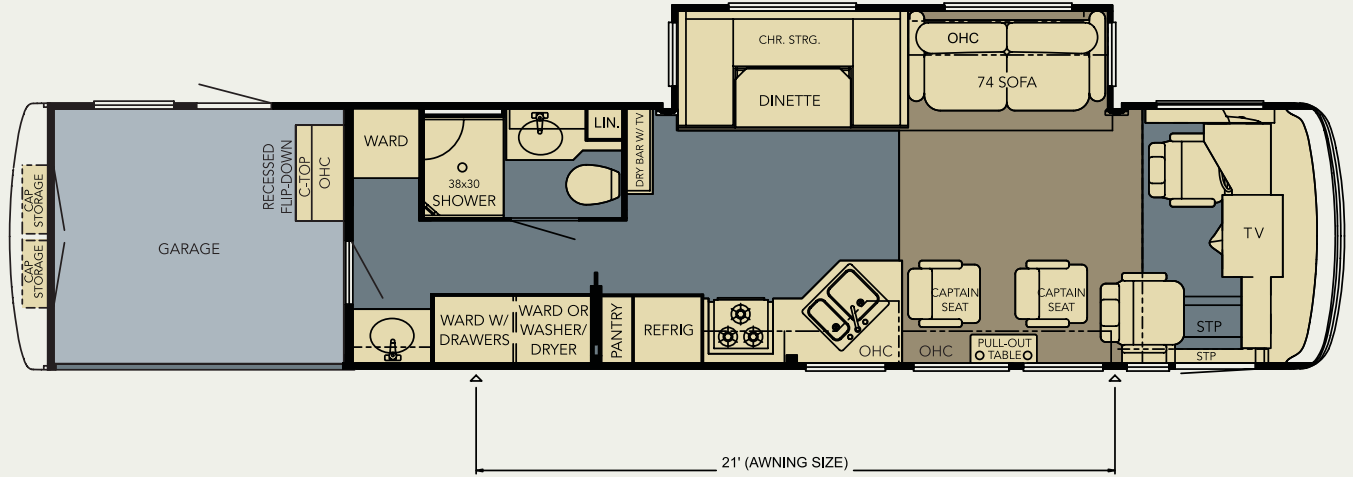
K073

Wardrobe (ILO Sink)
4150



K075

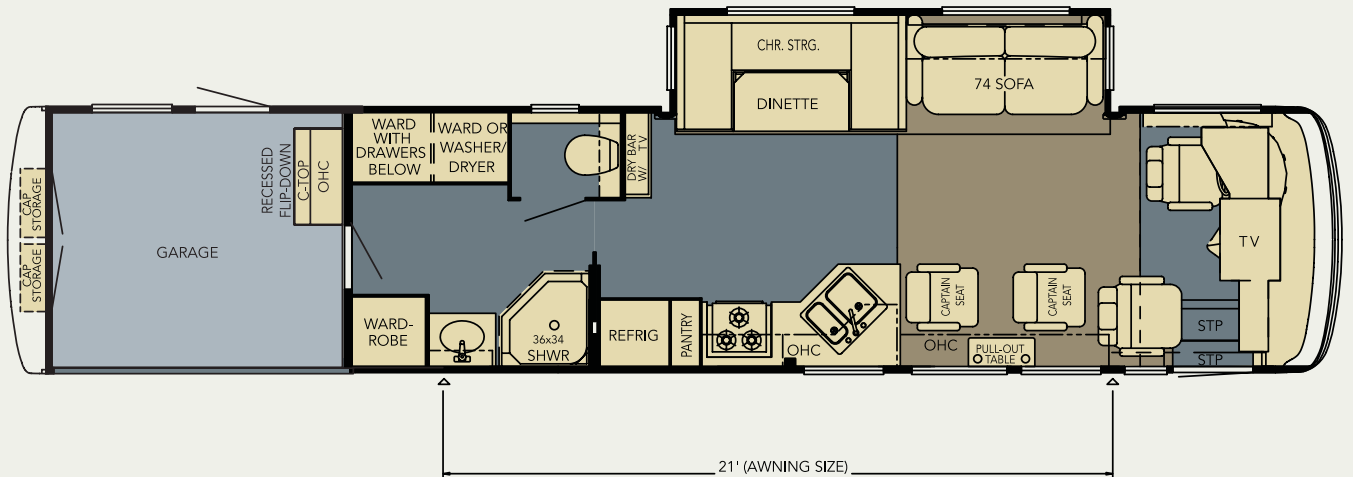
Bunk Beds (ILO Washer/Dryer, Wardrobe)
4150



ATME 4150

LENGTH: 41' 10"
WIDTH: 101.5"

OPTIONS:
K016, K073, K075, K274, K326_2, K543



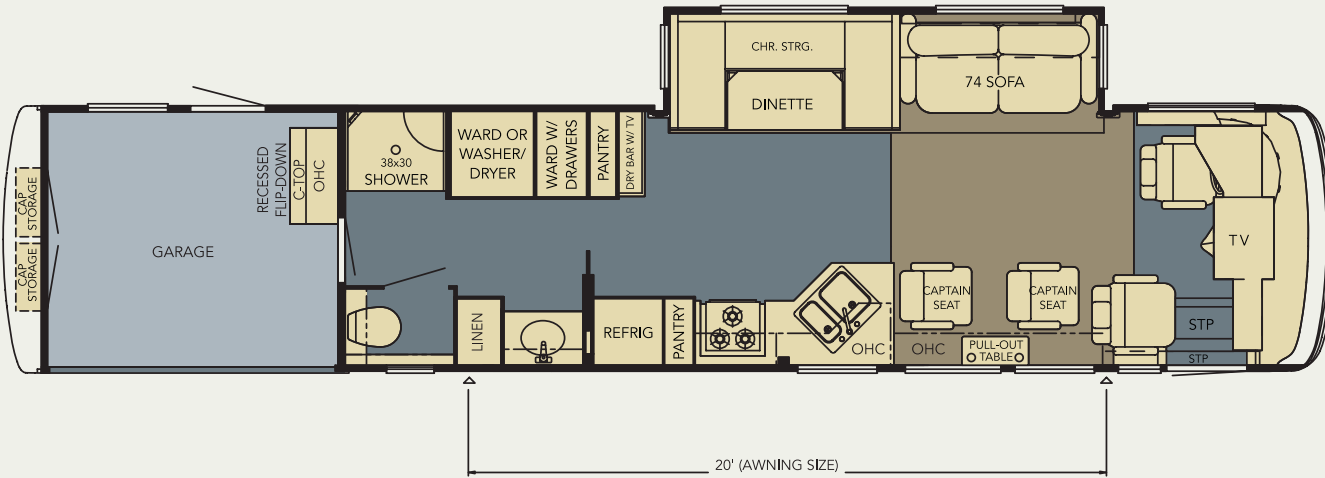
ATME 4151

LENGTH: 41' 10"
WIDTH: 101.5"

OPTIONS:
K016, K274, K326_2, K543

Carpet Simulated Marble Flooring Non-slip Surface

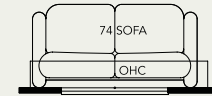
TOY HAULER



ATME 4152

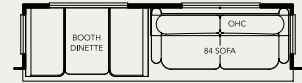
LENGTH: 41' 10"
WIDTH: 101.5"

OPTIONS:
K016, K274, K326_2, K543



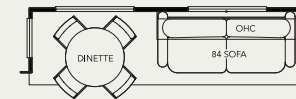
K016

74" Sofa (ILO Captain's Chairs)
4150, 4151, 4152



K274

Booth Dinette with 84" Sofa
4150, 4151, 4152



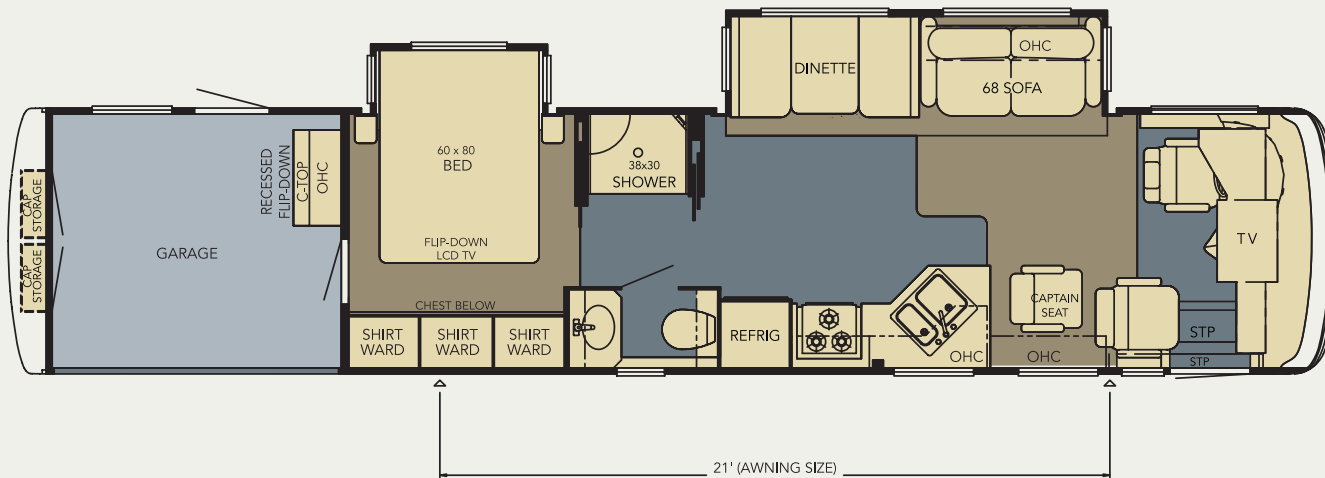
K543

Round Dinette with 84" Sofa
4150, 4151, 4152



K326_2

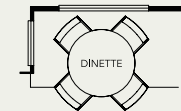
74" Desk (ILO Captain's Chairs)
4150, 4151, 4152



ATME 4153

LENGTH: 41' 10"
WIDTH: 101.5"

OPTIONS:
K540



K540

Round Dinette
4153

FAMILY EDITION



SUPER STORAGE

Take along everything you need to make your vacations come alive. Super Storage will hold it. This huge exterior storage compartment is accessible from either side of the coach and from the rear. Plus, it has a generous, optional super-convenient storage tray that increases your storage options.

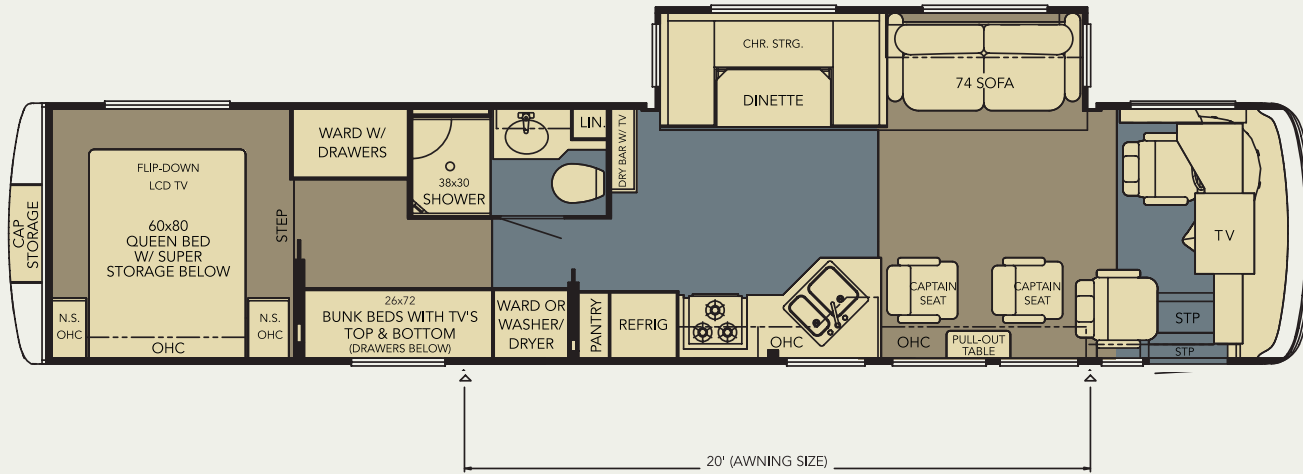
BUNK BEDS

The Family Edition's roomy bunk beds are sure to delight kids—especially since each bunk has an overhead flipdown LCD TV.



FAMILY EDITION. Sleep eight, feed eight and seat eight comfortably. That's the beauty of the All Star Family Edition, with its master suite featuring a restful queen bed, its separate set of bunk beds for the kids and its sleep-convertible dinette and sofa. So where do you stow everyone's gear? In the huge, standard Super Storage exterior compartment. The All Star carries all.

FAMILY EDITION



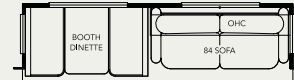
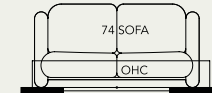
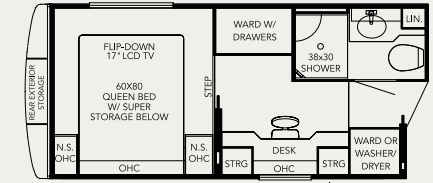
ATME 4154

LENGTH: 41' 10"
WIDTH: 101.5"

OPTIONS:
K016, K274, K326_2, K329, K543

K329

Desk (ILO Bunk Beds)
4154

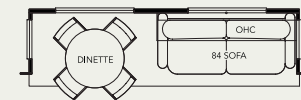


K016

74" Sofa (ILO Captain's Chairs)
4154

K274

Booth Dinette with 84" Sofa
4154



K326_2

74" Desk (ILO Captain's Chairs)
4154

K543

Round Dinette with 84" Sofa
4154

■ Carpet

■ Simulated Marble Flooring



RESTFUL COMFORT

All Star bedrooms offer queen beds with a quilted bedspread with shams and accent pillows. In select floorplans, additional storage is available underneath the bed. Also, a 17" LCD TV that drops from the ceiling is standard. (LCD TV is available on 4153 and 4154.)

LOFT EDITION



BOOTH DINETTE

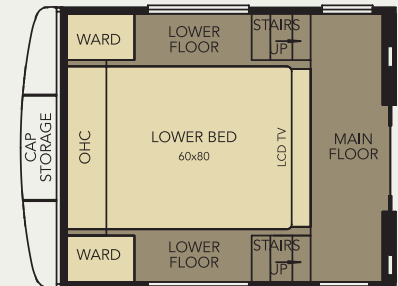
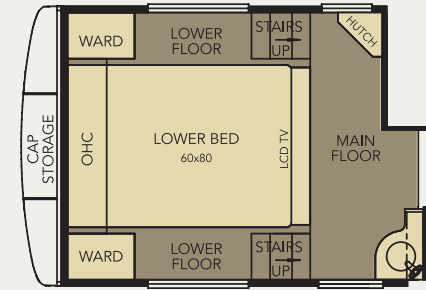
A huge, family-accommodating, built-in booth dinette comes standard. Its seat belts ensure safe travel for everyone aboard.

EXTRA SLEEPING

The built-in booth dinette and sofa can be converted quickly and easily into beds for extra sleeping accommodations.

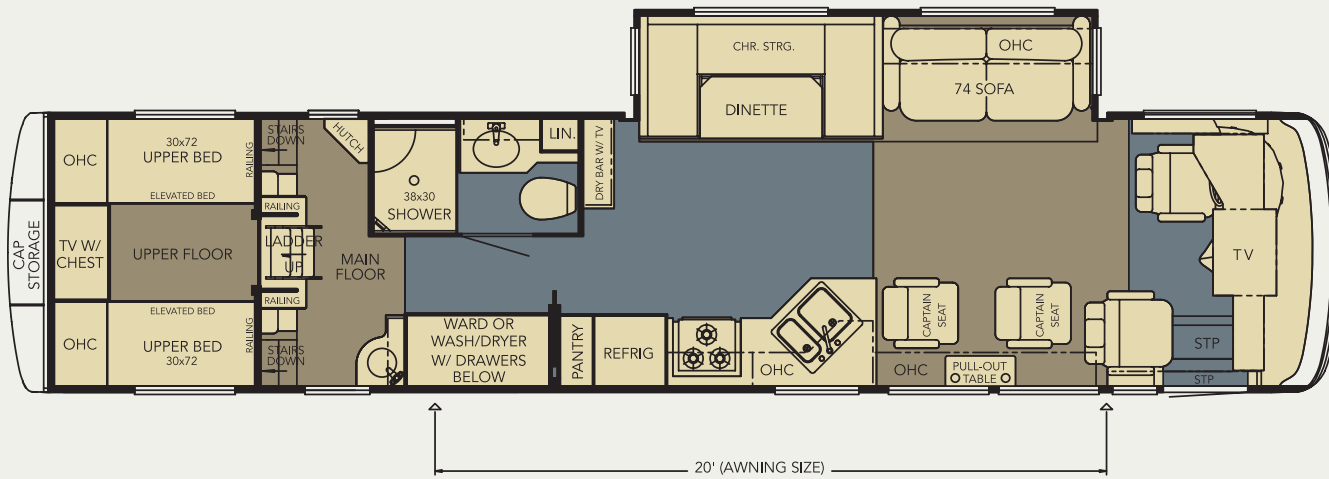
LOFT EDITION FLOORPLAN

In the All Star's loft edition floorplans, a queen bed is located on the main level with a 26" LCD TV mounted on the wall. The upper level has two twin beds and also includes a TV.



LOFT EDITION. Talk about versatility and innovation: Check out the All Star Loft Edition's ingenious split-level bedroom. Downstairs, you'll find the master suite, complete with a queen bed; upstairs, twin beds just right for the young ones. That's the kind of flexibility you get with mid-chassis engine placement—and a whole lot of forward thinking. Lofty ideas? All Star's got 'em.

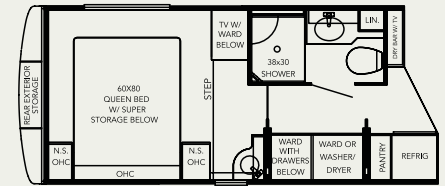
LOFT EDITION



ATME 3950

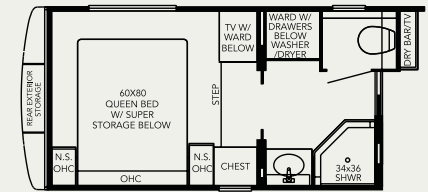
LENGTH: 39' 10"
WIDTH: 101.5"

OPTIONS:
K016, K077, K274, K326_2, K543



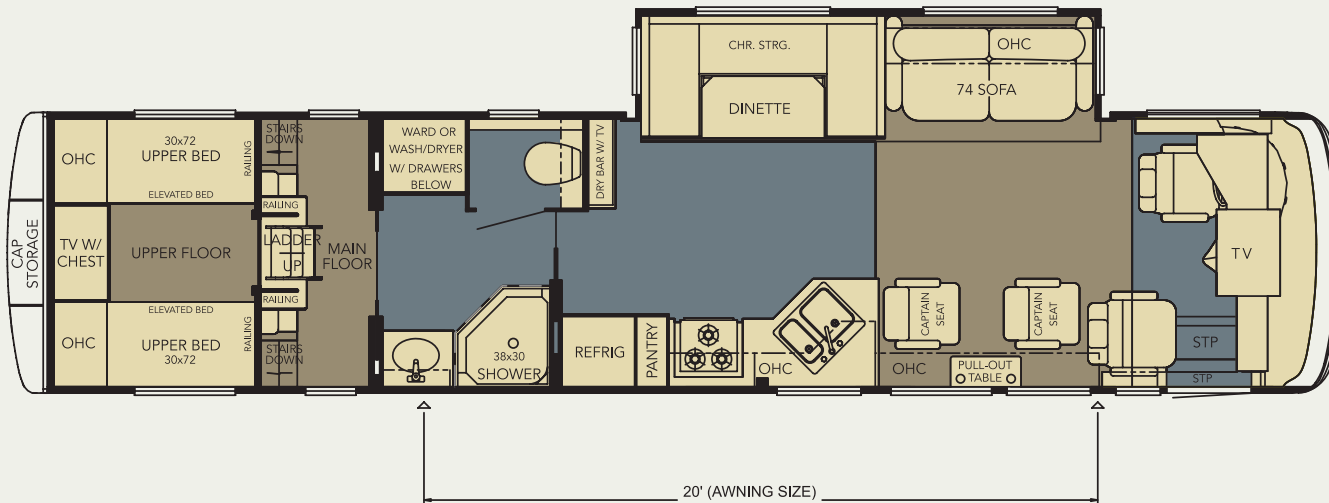
K077

Bedroom Suite with Super Storage Below
3950



K078

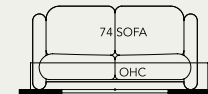
Bedroom Suite with Super Storage Below
3951



ATME 3951

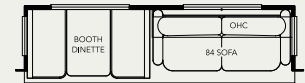
LENGTH: 39' 10"
WIDTH: 101.5"

OPTIONS:
K016, K078, K274, K326_2, K543



K016

74" Sofa (ILO Captain's Chairs)
3950, 3951



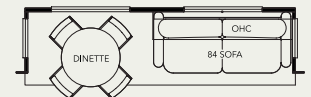
K274

Booth Dinette with 84" Sofa
3950, 3951



K326_2

74" Desk (ILO Captain's Chairs)
3950, 3951



K543

Round Dinette with 84" Sofa
3950, 3951

Carpet Simulated Marble Flooring

CEILINGS: R-VALUE = 16

- a. BriteTEK™ Roof
- b. 9 mm Wood Decking
- c. Fiberglass Batten Insulation
- d. A/C Ducting
- e. Aluminum Roof Truss
- f. Kraft Paper Vapor Barrier
- g. 5/8" Bead Foam
- h. 3/16" Panel
- i. Padded Vinyl Overlay

WALLS: R-VALUE = 11

- j. 3/4" Plywood Interior Wall
- k. 5/8" Bead Foam
- l. Kraft Paper Vapor Barrier
- m. Fiberglass Batten Insulation
- n. 3/4" Plywood Exterior Wall
- o. Composite One-piece Gelcoat Exterior Sidewall
- p. 16" On-center Aluminum Framing with 3 1/2" Header

BASEMENT: R-VALUE = 4

- q. Carpet/Tile
 - r. Carpet Padding
 - s. 5/8" Floor Decking
 - t. Fiberglass Batten Insulation
 - u. 2" x 3" Wood Framing
 - v. Polyethylene Moisture Barrier
 - w. Foam Panels (Noise Reduction)
 - x. Aluminum Ducting
1. 13.5M Penguin™ Heat Pump Central Air Conditioners (2)
 2. Coated Aluminum Wheels
 3. Double-pane Tinted Safety-glass Windows

FLOORING: R-VALUE = 16

- y. Cargo Liner
- z. 3/8" Floor Decking
- aa. 3/16" Luan Panel
- bb. 1 1/2" Bead Foam
- cc. Aluminum Sheeting (Prevents Distortion)



NEWMAR TOTAL COMFORT™ CENTRAL AIR CONDITIONING

Experience RV air conditioning just like that found in site-built homes. Newmar's Total Comfort Central Air Conditioning is actually two separate, fully ducted systems: one to distribute incoming cool air, the other to quickly and effectively remove warm air from every living area.

PROTECTED C-CHANNELS

To keep the electrical wiring that runs through holes in the aluminum-frame C-channels from chafing, each hole is ringed with a rubber grommet.



SIKAFLEX®

Used throughout Newmar construction, Sikaflex® elastic adhesive is one of the strongest bonding agents on the market today. It also serves as a sealant against air and water. And it helps dampen both sound and vibration.

16" ON-CENTER FRAMING

Just like a fine site-built residential home, your Newmar home is framed 16 inches on center, which allows the best placement of outlets, switches and other components.





ALPINE GREEN



CHILI RED



MIDNIGHT GRAY



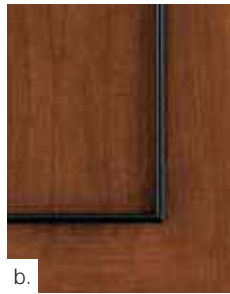
a.



d.



g.



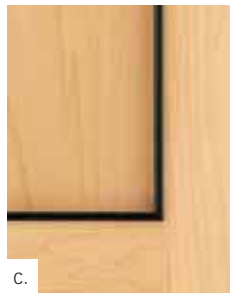
b.



e.



h.



c.



f.



i.

WOOD FINISHES & INTERIORS

- a. Tucson Oak Cabinetry, Standard
- b. Ericsburg Cherry Cabinetry
- c. Maple Cream Cabinetry
- d. Oak Raised-panel Cabinetry
- e. Ericsburg Cherry Raised-panel Cabinetry
- f. Maple Cream Raised-panel Cabinetry
- g. Alpine Green Color Scheme with Simulated Marble Flooring
- h. Chili Red Scheme with Simulated Marble Flooring
- i. Midnight Gray Color Scheme with Simulated Marble Flooring

Some features shown in our literature are optional. Colors and finishes are photographic representations. The actual materials may look different. Prices, specifications and floorplans are subject to change at Newmar's discretion, without prior notice or obligation. Please see your dealer for actual samples and specifications.

FULL-PAINT MASTERPIECE FINISH™

Newmar's Full-Paint Masterpiece Finish raises the exterior beauty and durability of our motorhomes to a whole new level. This model year, we're offering our richest-looking graphics ever—to lend even more character and class. As industry leaders in applying full body paint to motorhome coaches, we at Newmar are pleased to offer the Full-Paint Masterpiece Finish as an All Star Diesel Motorhome standard.

DETAILS, DETAILS, DETAILS. Go ahead. Get close. Real close. You'll see that this motorhome's comfort and styling aren't superficial: They're built into the very weave of our fabrics, the very grain of our cabinets and every nook and cranny you might want to scrutinize. After all, it's details that make the Newmar difference.

STANDARD FEATURES

CHASSIS FEATURES

- Spartan® Mountain Master ME Chassis
- Cummins® ISL 350 hp
- Coated Aluminum Wheels
- Electric Leveling Jacks with Touch Control
- Cruise Control
- Tilt-and-Telescope Steering Wheel
- Recessed Fuel Fills with Crossover to Fill from Either Side
- Back-up Alarm
- Anti-lock Braking System

AIR CONDITIONING & HEATING

- Two 13.5M Penguin™ Heat Pump Air Conditioners
- Propane Furnace with In-floor Ducted Heat
- Dash Heater and High-output Air Conditioner
- Propane Leak Detector

APPLIANCES & ACCESSORIES

- 30" Convection Microwave Oven
- Three-burner Cooktop with Piezo Ignition
- Solid-surface Range Cover
- Norcold® 10 cu. ft. Refrigerator with Molded Contemporary Doors
- 10 gal. Gas/Electric Water Heater with Direct-spark Ignition
- One-piece Washer/Dryer Prep*
- 24" Sony® Flatscreen Color TV in Front Overhead Cabinet
- 26" LCD TV in Living Room Entertainment Center (3950 & 3951)
- 26" LCD TV in Lower Master Bedroom Area (3950 & 3951)
- Color TV in Upper-bunk Area (3950 & 3951)
- 17" LCD TV in Bedroom (4153 & 4154)
- LCD TV in Bunk Area (4154)
- AM/FM Dash Radio with Cassette and CD Player
- Sony® Surround Sound Home Theater System with Single-disc DVD Player
- Rearview Monitor System
- Electronic Compass and Temperature Display in Dash
- TV Antenna with Power Booster and Two Interior Jacks
- Satellite Prep—Phone, TV Jack and Receptacle
- Exterior TV Jack on Door Side
- Telephone Connection with Phone Jacks in Living and Dash Area
- Two Bedroom Radio Speakers with On/Off Switch
- Roof-mounted Air Horns
- 10 Bc Fire Extinguisher, Carbon Monoxide and Smoke Detectors

CABINETS & FURNITURE

- Oak Cabinets with Mission-style Doors and Black Inserted Trim
- Booth Dinette with Seat Belts
- Solid-surface Countertop in Kitchen with Undermounted Sink and Flush Sink Covers
- Solid-surface Countertop in Bathroom with Integrated Sink
- Adjustable Pullout Pantry Shelves*
- Residential-style Full-extension Ball-bearing Drawer Guides
- Ultra Leather Cirrus Driver/Passenger Seats with Six-way Power, Power Lumbar, Ergo-Flex Arms
- Lifts on Bed Top to Access Storage Area (n/a on 4154)
- Tufted Mattress with Quilted Bedspread
- Two Folding Dinette Chairs

ELECTRICAL FEATURES

- 8.0 kW PowerTech Diesel Quiet Series Generator
- 50 Amp Electrical Service with Flexible Cord
- Four 6 Volt House Batteries on Pullout Tray
- Battery Disconnect Switch
- 110 Volt Exterior Receptacle on Door Side
- 5 Watt Solar Panel
- 2000 Watt Inverter
- Emergency Start Switch
- Exterior Security Light on Door Side
- Midship Side Turn Signals
- Fluorescent Lights Throughout
- Slideout Information Voice Module
- Manually Operated Hold-to-Run Slideout Switch
- ICC Light Switch
- 12 Volt Auxiliary Receptacles on Dashboard
- Exterior TV Jack on Door Side
- Interior Courtesy Lights

EXTERIOR FEATURES

- Full-Paint Masterpiece Finish™ with Diamond Shield Front Protective Film
- Convex Exterior Mirrors with Remote Control, Defrost and Turn Signals
- Automatic Entrance Door with Double Step
- Front Entry Door with Power Flush Stepwell Cover
- Side-hinged Baggage Doors (Except Door for Exterior Ent. Ctr. and Opt. Super Storage Door)
- Lighted Exterior Storage Compartments with Cargo Liner Controlled by Interior Master Switch
- 6,000 lb. Towing Hitch with Two Extra 14 Gauge Wires
- Lighted Acrylic Assist Handle at Entrance Door
- Rear Protective Full-width Tow Guard

- Rear Ladder
- Undercoating
- Mud Flaps
- Water Spray Hose by Garage Door (4150, 4151, 4152 & 4153)
- 24 gal. Fuel Dispenser (4150, 4151, 4152 & 4153)

INTERIOR FEATURES

- Padded Vinyl Ceiling
- Day/Night Pleated Window Shades and Lambrequins
- Mini-blinds in Kitchen and Bath Areas
- Simulated Marble Floor in Kitchen, Bathroom and Driver/Passenger Area
- Deluxe Carpeting with High-density Padding in Living Room and Bedroom
- Flat-panel Interior Passage Doors
- Interior Assist Handle at Main Entrance Door
- Sun Shades on Driver and Passenger Side Windows
- Wraparound Windshield Privacy Shade

PLUMBING & BATH FEATURES

- Demand Water System with Shurflo® Pump
- Sewage Holding-tank Rinse
- Water Heater Bypass System
- Thetford™ Vacuum Flush Stool
- Towel Bars and Tissue Holder
- Fiberglass Bathtub/Shower with Glass Shower Door
- Monitor Panel
- Water Pump Switches Located in Bathroom, Kitchen and Exterior, Near Gate Valves
- Exterior Shower
- Water Filter with Drink Dispenser at Kitchen Sink

WINDOWS, AWNINGS & VENTS

- Double-pane Tinted Safety-glass Windows
- Fan-Tastic® Vent with Rain Sensor in Kitchen and Bathroom Areas
- Skylight in Bathroom
- A&E® 9000 Side Awning
- A&E® Oasis Manual Front Entrance Door Awning
- A&E® Slideout Awning Covers

*CHECK DEALERSHIP FOR FLOORPLAN AVAILABILITY

OPTIONAL FEATURES

AIR CONDITIONING & HEATING

- Two 15M Penguin™ Heat Pump Central Air Conditioners
- 13.5M Penguin™ Air Conditioner with Heat Strip in Garage Area (4150, 4151, 4152, 4153)

APPLIANCES & ACCESSORIES

- Norcold® 12 cu. ft. Four-door Refrigerator with Icemaker
- Icemaker Added to Refrigerator*
- One-piece Washer/Dryer*
- Two-piece Washer/Dryer*
- SIRIUS® Satellite Radio Capability (Does not include monthly subscription)
- External Entertainment Center with 26" LCD TV AM/FM Radio and CD Player
- Automatic Satellite without Receiver
- In-motion Satellite without Receiver
- Sideview Cameras
- CB Radio with Antenna
- CB Antenna

CABINETS & FURNITURE

- Ericsburg Cherry Cabinets
- Maple Cream Cabinets
- Raised-panel Cabinet Doors
- Booth Dinette with Seat Belts and Ultra Leather Cirrus Sofa
- Ultra Leather Cirrus Hide-a-Bed*
- Fabric Hide-a-Bed*
- Ultra Leather Cirrus Sofa*
- Round Hardwood Dinette Table with Four Fixed Chairs and Larger Dinette Window and Sofa*
- Round Hardwood Dinette Table with Four Fixed Chairs and Larger Dinette Window*
- Desk with Fixed Chair
- Bunk Beds*

FLOORPLAN SPECIFICATIONS

ELECTRICAL FEATURES

- 7.5 kW Onan® Quiet Series Diesel Generator

EXTERIOR FEATURES

- Large Chrome Exterior Mirrors
- Hydraulic Leveling Jacks with Touch Control
- Large Storage Tray with Access from One or Either Side (Available Only with Bedroom Suite/Super-Storage Option)

INTERIOR FEATURES

- Bedroom Suite with Super Storage Below
- Custom Area Rug Over Engine Cover
- Power-activated Sun Visors

PLUMBING & BATH FEATURES

- 110 Volt Heat Pads for Holding Tanks
- Water Filter for Entire Unit

CONSTRUCTION FEATURES

- Power Lock Arms

WINDOWS, AWNINGS & VENTS

- A&E® 9000 Bedroom and Slideout Window Awnings
- A&E® Weather Pro Side Awning and Oasis Power Front Entrance Door Awning

*CHECK DEALERSHIP FOR FLOORPLAN AVAILABILITY

FLOORPLAN	APP. OVERALL LENGTH ¹	WIDTH	APP. OVERALL HEIGHT	INTERIOR WIDTH	INTERIOR HEIGHT	GREY	SEWAGE	WATER	PROPANE	FURNACE	WATER HEATER
ATME 3950	39' 10"	101.5"	12' 7"	95.5"	84"	65 gal.	45 gal.	105 gal.	32 gal.	42,000 Btu	10 gal.
ATME 3951	39' 10"	101.5"	12' 7"	95.5"	84"	65 gal.	45 gal.	105 gal.	32 gal.	42,000 Btu	10 gal.
ATME 4150	41' 10"	101.5"	12' 7"	95.5"	84"	65 gal.	45 gal.	105 gal.	32 gal.	35,000 Btu	10 gal.
ATME 4151	41' 10"	101.5"	12' 7"	95.5"	84"	65 gal.	45 gal.	105 gal.	32 gal.	35,000 Btu	10 gal.
ATME 4152	41' 10"	101.5"	12' 7"	95.5"	84"	65 gal.	45 gal.	105 gal.	32 gal.	35,000 Btu	10 gal.
ATME 4153	41' 10"	101.5"	12' 7"	95.5"	84"	65 gal.	45 gal.	105 gal.	32 gal.	35,000 Btu	10 gal.
ATME 4154	41' 10"	101.5"	12' 7"	95.5"	84"	65 gal.	45 gal.	105 gal.	32 gal.	42,000 Btu	10 gal.

SPARTAN® CHASSIS INFORMATION

FLOORPLAN	ENGINE HP	AXLE RATIO	FUEL CAP.	WHEELBASE	FRONT GAWR ²	REAR GAWR ²	GVWR ²	GCWR ²	APP. UVW	APP. NCC
ATME 3950	350	4.88	100 gal.	252"	14,500 lb.	20,000 lb.	34,500 lb.	42,500 lb.	25,500 lb.	9,000 lb.
ATME 3951	350	4.88	100 gal.	252"	14,500 lb.	20,000 lb.	34,500 lb.	42,500 lb.	25,300 lb.	9,200 lb.
ATME 4150	350	4.88	100 gal.	252"	14,500 lb.	20,000 lb.	34,500 lb.	42,500 lb.	25,900 lb.	8,600 lb.
ATME 4151	350	4.88	100 gal.	252"	14,500 lb.	20,000 lb.	34,500 lb.	42,500 lb.	25,900 lb.	8,600 lb.
ATME 4152	350	4.88	100 gal.	252"	14,500 lb.	20,000 lb.	34,500 lb.	42,500 lb.	25,900 lb.	8,600 lb.
ATME 4153	350	4.88	100 gal.	252"	14,500 lb.	20,000 lb.	34,500 lb.	42,500 lb.	26,600 lb.	7,900 lb.
ATME 4154	350	4.88	100 gal.	252"	14,500 lb.	20,000 lb.	34,500 lb.	42,500 lb.	25,900 lb.	8,600 lb.

SPARTAN® MID-ENGINE CHASSIS

Spartan has revolutionized the industry with the mid-engine chassis by moving the engine from the back to the middle. The new design expands floorplan options and improves driving performance. The mid-engine chassis allows for a perfectly balanced, stable ride; especially important while changing lanes and avoiding road debris. Plus, you'll experience the comfort of a quietly purring engine surrounded by state-of-the-art sound-insulating material. Maintenance is simplified with the side-mounted service center, where you can easily access the main chassis service components without any hassle. So go ahead, share your adventures with the family without sacrificing a bit of comfort.



Lengths, heights, widths and dry weights are approximate. Weight will vary based on optional equipment added to the above base weight.

¹ Lengths do not include the rear ladder.

² Specifications are supplied by the chassis manufacturer.

GAWR: Gross Axle Weight Rating is the maximum permissible weight for an axle.

GCWR: Gross Combination Weight Rating is the value specified by the manufacturer of the vehicle as the maximum allowable loaded weight of this motorhome and any towed trailer or towed vehicle.

GVWR: Gross Vehicle Weight Rating is the maximum permissible weight of a fully loaded motorhome.

UVW: Unloaded Vehicle Weight is the weight of this motorhome as built at the factory with full fuel, engine oil and coolants. The UVW does not include cargo, fresh water, LP gas or dealer-installed accessories.

NCC: Net Carrying Capacity is the maximum weight of all occupants, including the driver, personal belongings, food, fresh water, waste water, LP gas, tools, tongue weight of towed vehicle, dealer-installed accessories, etc., that can be carried by the motorhome.

ALLSTAR

2007 || DIESEL MOTORHOME



WHAT'S IN A NAME?

When you buy a Newmar, you get more than an RV. You get the benefit of all we at Newmar believe in:

- Building products worthy of our customers' highest expectations for quality, durability and value
- Blending advanced manufacturing techniques with the time-tested practices of Amish craftsmanship
- Leading the industry with innovations that enhance RV living
- Offering responsive, effective customer service and support
- Being conscientious, loyal and fair in our business dealings
- Treating everyone according to the highest moral and ethical principles

This is what we value—and have valued from the day we opened shop in 1968. This is what the name Newmar has come to mean for so many. And this is what we'll hold on to for as long as we do business.



WHEN YOU KNOW THE DIFFERENCE™

NEWMAR CORPORATION
355 N DELAWARE ST
PO BOX 30
NAPPANEE IN 46550-0030
574-773-7791 FAX 574-773-2895

www.newmarcorp.com

Your Official Newmar Dealer