



Bay Star

2007 | GAS MOTORHOME

Bay Star

2007 | GAS MOTORHOME





Bay Star

2007 | GAS MOTORHOME



EASY ENTRY TO A WHOLE NEW WORLD

Anyone can offer an affordable motorhome. But where do you find one that's a real joy to live in? Check out the brand-new 2007 Bay Star from Newmar. Here's an entry-level motorhome that simply refuses to look—or feel—like anything less than a luxury RV. Coming from Newmar, it certainly has the heritage: Brisk contemporary styling with a nod to tradition. A wealth of amenities. Solid construction. Value pricing. And a clear sense of adventure that says it's a Newmar all the way.



SLEEP WELL

The Bay Star booth dinette and Flexsteel® sofa both convert into extra sleeping accommodations.*

*Bedspreads and pillows not included.

BEDROOM AMENITIES

Generous cabinets include a wardrobe with mirrored doors and an overhead shelf to hold an optional color TV.

YOUR BAY STAR KITCHEN

Amenities like these lend beauty and functionality: ample cabinets; an easy-cleaning laminate countertop with a flip-up extension; an under-mounted sink and flush sink covers; built-in appliances, including a Dometic® 8-cubic-foot refrigerator (not shown) and a microwave oven in addition to the three-burner range; and a comfortable booth dinette with forward-facing seat belts.

STEP STORAGE

Keep shoes or any kind of small necessities handy in this compact storage compartment built right into the coach's top entrance step. Just lift the sturdy tread-covered lid for access.



EASY-GLIDE DRAWERS

Residential-style, ball-bearing drawer guides throughout the coach allow smooth, full-drawer extension.

SOFT RESTFUL QUEEN BED

Your Bay Star queen bed features a sweeping fabric headboard, a tufted mattress and a quilted bedspread with shams and accent pillows. Lifts on the bedtop allow access to storage underneath.

FIRST-CLASS COOKING

Bay Star's three-burner piezo-ignition range and oven let you prepare quality meals quickly and easily, wherever you go.



Bay Star

2007 | GAS MOTORHOME

TOTAL TRAVEL COMFORT

The roomy Bay Star cockpit features optional Ultra Leather Cirrus driver and passenger seats and a thoughtfully configured dash that includes a rearview monitor system with audio.



NOW YOU KNOW YOU'RE GOING PLACES.

Wherever your travels take you, Bay Star is built to go the distance year after year. Rich exterior graphics with painted skirt announce your arrival with style.

EXTERIOR MIRRORS

Bay Star's standard convex exterior mirrors have automatic defrost capability. Optional remote-controlled convex mirrors with automatic defrost are available as well.





STEERING WHEEL

A tilt steering wheel with cruise control is standard on all Bay Stars —as is the dependable Ford® chassis. Rest assured, your Bay Star Ford® chassis limited warranty is for 36 months or 36,000 miles (whichever occurs first).



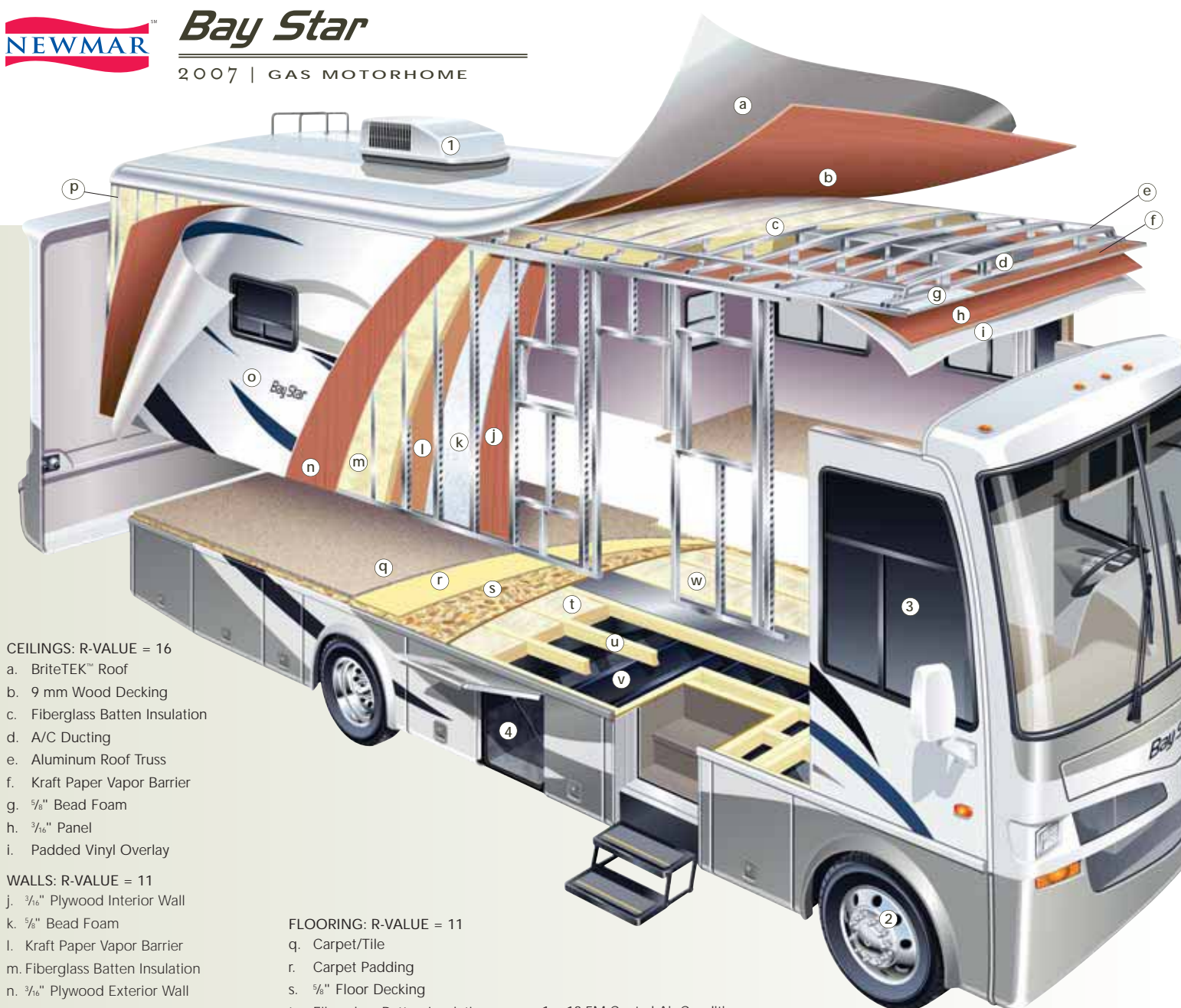
HUGE EXTERIOR STORAGE

Stow all your favorite travel gear in this awesome exterior storage compartment, complete with interior lighting and a cargo liner.



Bay Star

2007 | GAS MOTORHOME



CEILINGS: R-VALUE = 16

- a. BriteTEK™ Roof
- b. 9 mm Wood Decking
- c. Fiberglass Batten Insulation
- d. A/C Ducting
- e. Aluminum Roof Truss
- f. Kraft Paper Vapor Barrier
- g. 5/8" Bead Foam
- h. 3/16" Panel
- i. Padded Vinyl Overlay

WALLS: R-VALUE = 11

- j. 3/16" Plywood Interior Wall
- k. 5/8" Bead Foam
- l. Kraft Paper Vapor Barrier
- m. Fiberglass Batten Insulation
- n. 3/16" Plywood Exterior Wall
- o. Composite One-piece Gelcoat Exterior Sidewall
- p. 16" On-center Aluminum Framing with 3 1/2" Header

FLOORING: R-VALUE = 11

- q. Carpet/Tile
- r. Carpet Padding
- s. 5/8" Floor Decking
- t. Fiberglass Batten Insulation
- u. 2" x 3" Wood Framing
- v. Polyethylene Moisture Barrier
- w. Aluminum Ducting

- 1. 13.5M Central Air Conditioner
- 2. Stainless Steel Wheel Simulators
- 3. Tinted Safety-glass Windows
- 4. Top-Hinged Baggage Doors

16" ON-CENTER FRAMING

Just like a fine site-built residential home, your Newmar home is framed 16 inches on center, which allows the best placement of outlets, switches and other components.

SIKAFLEX®

Used throughout Newmar construction, Sikaflex® elastic adhesive is one of the strongest bonding agents on the market today. It also serves as a sealant against air and water. And it helps dampen both sound and vibration.

NEWMAR TOTAL COMFORT™ CENTRAL AIR CONDITIONING



Experience RV air conditioning just like that found in site-built homes. Newmar's Total Comfort Central Air Conditioning is actually two separate, fully ducted systems: one to distribute incoming cool air, the other to quickly and effectively remove warm air from every living area.

PROTECTED C-CHANNELS

To keep the electrical wiring that runs through holes in the aluminum-frame C-channels from chafing, each hole is ringed with a rubber grommet.



a.



b.



c.



d.



e.



WOOD FINISHES & INTERIORS

- a. Tucson Oak Cabinetry, Standard
- b. Maple Cream Cabinetry

- c. Aspen Green Color Scheme with vinyl flooring
- d. Montego Blue Color Scheme with vinyl flooring

- e. Sunset Tan Color Scheme with vinyl flooring

Some features shown in our literature are optional. Colors and finishes are photographic representations. The actual materials may look different. Prices, specifications and floorplans are subject to change at Newmar's discretion, without prior notice or obligation. Please see your dealer for actual samples and specifications.

DETAILS, DETAILS, DETAILS. Go ahead. Get close. Real close. You'll see that this motorhome's comfort and styling aren't superficial: They're built into the very weave of our fabrics, the very grain of our cabinets and every nook and cranny you might want to scrutinize. After all, it's details that make the Newmar difference.



ASPEN GREEN



MONTEGO BLUE



SUNSET TAN



Bay Star

2007 | GAS MOTORHOME

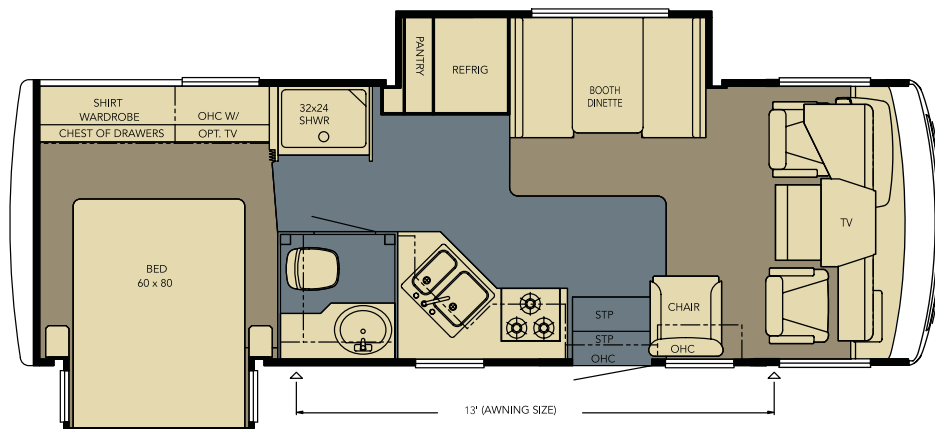
BSCA 2701

Length: 27' 9"

Width: 101.5"

Options:

- K779_2



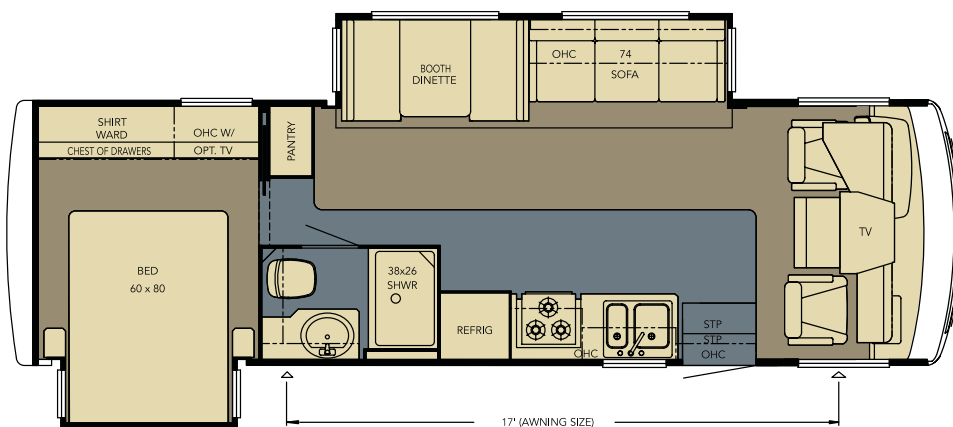
BSCA 2901

Length: 29' 9"

Width: 101.5"

Options:

- K779



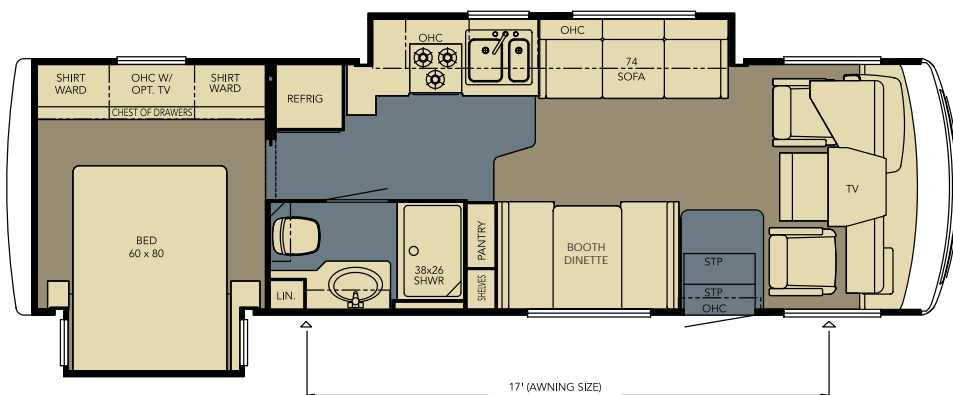
BSCA 3003

Length: 30' 10"

Width: 101.5"

Options:

- K779_3



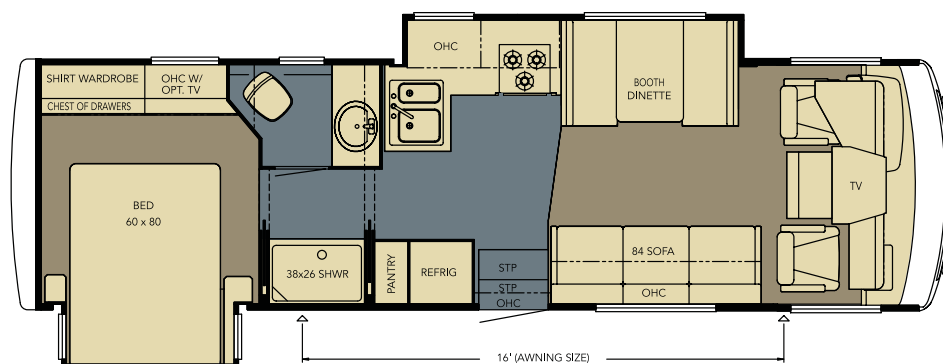
BSCA 3102

Length: 31' 6"

Width: 101.5"

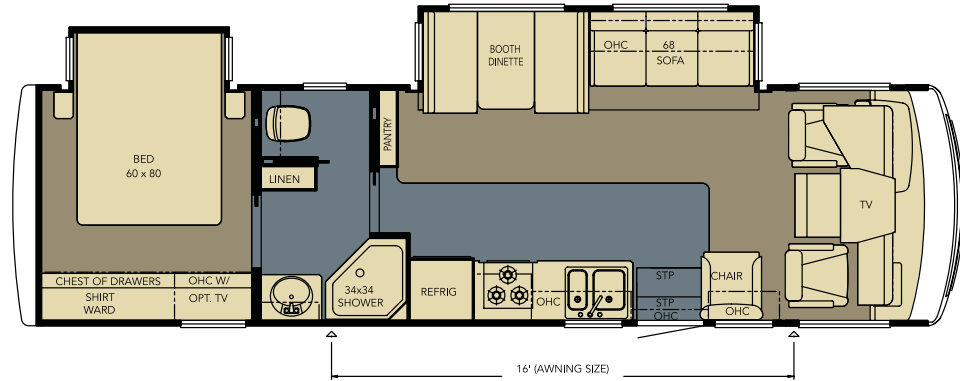
Options:

- K779_2



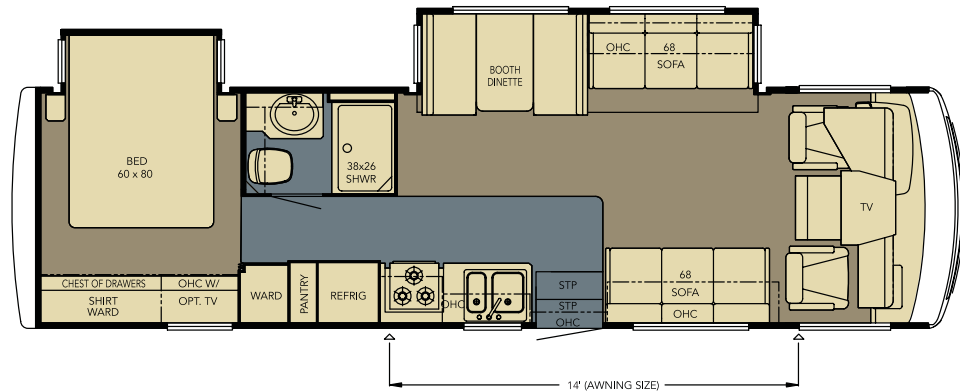
BSCA 3201

Length: 32' 10"
Width: 101.5"
Options:
• K779



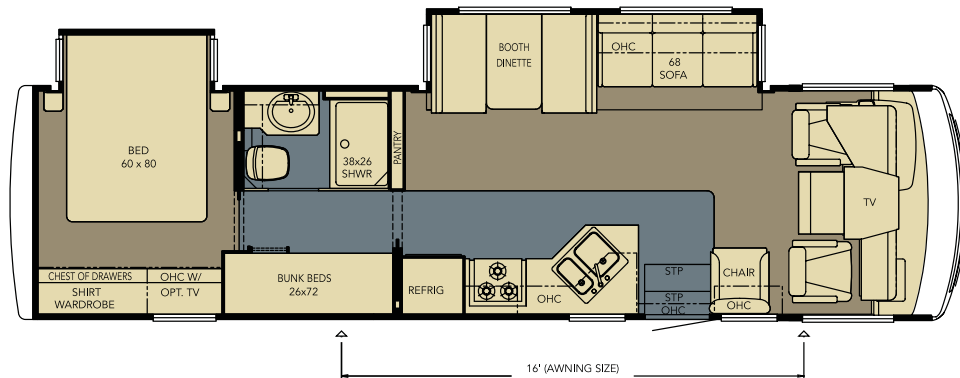
BSCA 3202

Length: 32' 9"
Width: 101.5"
Options:
• K779



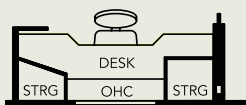
BSCA 3304

Length: 33' 10"
Width: 101.5"
Options:
• K070
• K329_2
• K779



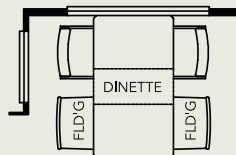
K070

Wardrobe (ILO Bunk Beds)
3304



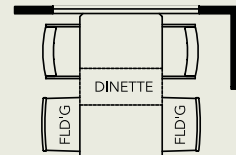
K329_2

Desk
3304



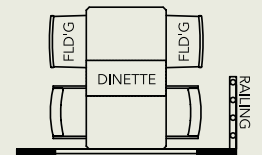
K779

Dinette
2901, 3201, 3202, 3304



K779-2

Dinette
2701, 3102



K779-3

Dinette
3003



Bay Star

2007 | GAS MOTORHOME

STANDARD FEATURES

CHASSIS FEATURES

- Ford® F-53 18,000 lb. Chassis (27'–29' floorplans)
- Ford® F-53 20,500 lb. Chassis (30'–33' floorplans)
- Electric Leveling Jacks with Touch Control
- Cruise Control
- Tilt Steering Wheel
- Stainless Steel Wheel Simulators

AIR CONDITIONING & HEATING

- 13.5M Brisk® Central Air Conditioner
- Propane Furnace with In-floor Ducted Heat
- Dash Heater and Air Conditioner
- Propane Leak Detector

APPLIANCES & ACCESSORIES

- Three-burner Range with Metal Oven Door and Piezo Ignition
- Bi-fold Range Cover
- Range Hood with Light and Fan
- Dometic® 8 cu. ft. Refrigerator
- Black Refrigerator Front Panel
- Microwave Oven
- 6 gal. Gas/Electric Water Heater with Electronic Ignition
- Flatscreen TV in Living Area
- AM/FM Dash Radio with Cassette and CD Player
- Black-and-White Rearview Monitor System with Audio
- TV Antenna with Power Booster and Two Interior Jacks
- Satellite Prep
- Telephone Connection with Phone Jack in Living Area
- Cable TV Connection with Rg6 Coax
- 10 Bc Fire Extinguisher, Carbon Monoxide and Smoke Detectors

CABINETS & FURNITURE

- Oak Raised-panel Cabinet Doors on Overhead Cabinets
- Booth Dinette with Forward-facing Seat Belts
- Laminate Countertop in Kitchen with Undermounted Acrylic Sink and Flush Sink Covers
- Laminate Countertop in Bathroom with Plastic Bowl
- Residential-style Full-extension Ball-bearing Drawer Guides
- Kitchen Countertop Extension*
- Pullout Pantry*
- Flexsteel® Furniture
- Fabric Driver/Passenger Seats
- Fabric Swivel Chair
- Lifts on Bedtop to Access Storage Area
- Tufted Mattress with Quilted Bedspread, Shams and Accent Pillows

ELECTRICAL FEATURES

- 4.0 kW Onan® Generator with Remote Switch and Automatic Changeover
- 30 Amp Electrical Service with Flexible Cord
- Two 12 Volt House Batteries on Pullout Tray
- Battery Disconnect Switch
- 110 Volt Exterior Receptacle on Door Side
- 5 Watt Solar Panel
- 45 Amp Converter
- Daytime Headlight System
- Emergency Start Switch
- Incandescent Lights Throughout
- Lighted Wardrobe
- Manually Operated Hold-to-Run Slideout Switch
- Exterior TV Jack

EXTERIOR FEATURES

- Vinyl Graphics with Painted Skirt
- Convex Exterior Mirrors with Defrost
- Automatic Entrance Door with Double Step
- Lighted Exterior Storage Compartments with Cargo Liner
- 5,000 lb. Towing Hitch with Two Extra 14 Gauge Wires
- Assist Handle at Entrance Door
- Undercoating
- Mud Flaps

INTERIOR FEATURES

- Padded Vinyl Ceiling
- Day/Night Pleated Window Shades and Lambrequins
- Mini-blinds in Kitchen and Bathroom Areas
- Vinyl Floor in Kitchen and Bathroom Areas
- Deluxe Carpeting with High-density Padding in Living Room and Bedroom
- Flat-panel Interior Passage Doors
- Interior Assist Handle at Main Entrance Door
- Shoe Storage Located in Entrance Step Compartment
- Wastebasket in Bathroom
- Dash Fans
- Wraparound Windshield Privacy Shade

PLUMBING & BATH FEATURES

- Demand Water System with SHURflo® Pump
- Sewage Holding-tank Rinse
- Water Heater Bypass System
- Thetford™ Aqua Magic Stool with Spray Attachment
- Towel Bars and Tissue Holder
- Towel Ladder on Hinged Bathroom Door Only
- Bathtub/Shower Surround with Shower Door
- Exterior Shower
- Monitor Panel

WINDOWS, AWNINGS & VENTS

- Tinted Safety-glass Windows
- Power Vent with Wall Switch in Bathroom
- Skylight in Bathroom
- A&E® 8500 Side Awning
- Slideout Covers

OPTIONAL FEATURES

OPTION PACKAGE:

- Extra 13.5M Brisk® Central Air Conditioner, 5.5 kW Onan® Marquis Generator and 50 Amp Service with Energy Management System (30'–33' floorplans)

AIR CONDITIONING & HEATING

- 15.0M Penguin™ Heat Pump Central Air Conditioner (ILO 13.5 Brisk® Air on 27'–29' floorplans)
- Auxiliary Heater in Bedroom

APPLIANCES & ACCESSORIES

- Sony® Surround Sound System with AM/FM Radio, DVD Player and Subwoofer
- SIRIUS® Satellite Radio Capability (Does not include monthly subscription)
- 10-disc CD Player
- Color TV in Bedroom
- Automatic Satellite Dish without Receiver
- DVD/VCR Player (N/A with Surround Sound)
- CB Antenna

CABINETS & FURNITURE

- Maple Cream Cabinets
- Ultra Leather Cirrus Swivel Chair*
- Hidden-leaf Dinette Table with Four Chairs (Two Fixed, Two Folding)*
- Wardrobe in place of Bunk Beds*
- Desk in place of Bunk Beds*
- Ultra Leather Cirrus Driver and Passenger Seats

ELECTRICAL FEATURES

- 600 Watt Inverter for Living Area or Bedroom TV
- Solar Prep

EXTERIOR FEATURES

- Convex Exterior Mirrors with Defrost and Remote Control
- Rear Ladder

WINDOWS, AWNINGS & VENTS

- Double-pane Tinted Safety-glass Windows
- Rear Window (Single Pane)
- Power Vent in Kitchen

* CHECK WITH DEALERSHIP
ON FLOORPLAN AVAILABILITY



FLOORPLAN SPECIFICATIONS

FLOORPLAN	APP. OVERALL LENGTH ¹	WIDTH	APP. OVERALL HEIGHT	INTERIOR WIDTH	INTERIOR HEIGHT	GREY	SEWAGE	WATER	PROPANE	FURNACE	WATER HEATER
BSCA 2701	27' 9"	101.5"	12' 0"	95.5"	80"	60 gal.	40 gal.	75 gal.	25 gal.	30,000 Btu	6 gal.
BSCA 2901	29' 9"	101.5"	12' 0"	95.5"	80"	60 gal.	40 gal.	75 gal.	25 gal.	30,000 Btu	6 gal.
BSCA 3003	30' 10"	101.5"	12' 0"	95.5"	80"	60 gal.	40 gal.	75 gal.	25 gal.	30,000 Btu	6 gal.
BSCA 3102	31' 6"	101.5"	12' 0"	95.5"	80"	60 gal.	40 gal.	75 gal.	25 gal.	30,000 Btu	6 gal.
BSCA 3201	32' 10"	101.5"	12' 0"	95.5"	80"	60 gal.	40 gal.	75 gal.	25 gal.	30,000 Btu	6 gal.
BSCA 3202	32' 9"	101.5"	12' 0"	95.5"	80"	60 gal.	40 gal.	75 gal.	25 gal.	30,000 Btu	6 gal.
BSCA 3304	33' 10"	101.5"	12' 0"	95.5"	80"	60 gal.	40 gal.	75 gal.	25 gal.	34,000 Btu	6 gal.

FORD® CHASSIS INFORMATION

FLOORPLAN	ENGINE HP	AXLE RATIO	FUEL CAP.	WHEELBASE	FRONT GAWR ²	REAR GAWR ²	GVWR ²	GCWR ²	APP. UVW	APP. NCC
BSCA 2701	362	5.38	75 gal.	172"	7,000 lb.	11,000 lb.	18,000 lb.	26,000 lb.	15,012 lb.	2,988 lb.
BSCA 2901	362	5.38	75 gal.	190"	7,000 lb.	11,000 lb.	18,000 lb.	26,000 lb.	15,635 lb.	2,365 lb.
BSCA 3003	362	5.38	75 gal.	190"	7,000 lb.	13,500 lb.	20,500 lb.	26,000 lb.	16,457 lb.	4,043 lb.
BSCA 3102	362	5.38	75 gal.	200"	7,000 lb.	13,500 lb.	20,500 lb.	26,000 lb.	16,217 lb.	4,283 lb.
BSCA 3201	362	5.38	75 gal.	200"	7,000 lb.	13,500 lb.	20,500 lb.	26,000 lb.	16,450 lb.	4,050 lb.
BSCA 3202	362	5.38	75 gal.	200"	7,000 lb.	13,500 lb.	20,500 lb.	26,000 lb.	16,416 lb.	4,084 lb.
BSCA 3304	362	5.38	75 gal.	208"	7,000 lb.	13,500 lb.	20,500 lb.	26,000 lb.	16,887 lb.	3,613 lb.

¹ Lengths do not include the rear ladder.

² Specifications are supplied by chassis manufacturer.

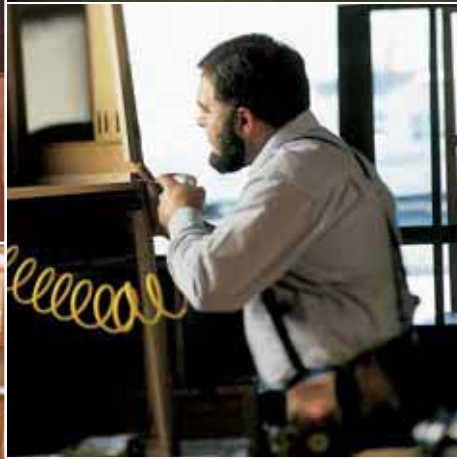
GAWR: Gross Axle Weight Rating is the maximum permissible weight for an axle.

GVWR: Gross Vehicle Weight Rating is the maximum permissible weight of a fully loaded motorhome.

GCWR: Gross Combination Weight Rating is the value specified by the manufacturer of the vehicle as the maximum allowable loaded weight of this motorhome and any towed trailer or towed vehicle.

UVW: Unloaded Vehicle Weight is the weight of this motorhome as built at the factory with full fuel, engine oil and coolants. The UVW does not include cargo, fresh water, LP gas or dealer-installed accessories.

NCC: Net Carrying Capacity is the maximum weight of all occupants, including the driver, personal belongings, food, fresh water, waste water, LP gas, tools, tongue weight of towed vehicle, dealer-installed accessories, etc., that can be carried by the motorhome.



WHAT'S IN A NAME?

When you buy a Newmar, you get more than an RV. You get the benefit of all we at Newmar believe in:

- Building products worthy of our customers' highest expectations for quality, durability and value
- Blending advanced manufacturing techniques with the time-tested practices of Amish craftsmanship
- Leading the industry with innovations that enhance RV living
- Offering responsive, effective customer service and support
- Being conscientious, loyal and fair in our business dealings
- Treating everyone according to the highest moral and ethical principles

This is what we value—and have valued from the day we opened shop in 1968. This is what the name Newmar has come to mean for so many. And this is what we'll hold on to for as long as we do business.



WHEN YOU KNOW THE DIFFERENCE™

NEWMAR CORPORATION
355 N DELAWARE ST
PO BOX 30
NAPPANEE IN 46550-0030
574-773-7791 FAX 574-773-2895

www.newmarcorp.com

Your Official Newmar Dealer