

2007
CYPRESS

Fifth Wheel



For jaunty,
fun-loving
adventures...

Or simply hunkering
down in its
cozy confines...

Cypress is ready
when you are!



no ordinary
fifth wheel!

step up to
value!




Listen to **Your**
Experience



jaunty
FUN!





Because you're an experienced RVer, you've seen what other manufacturers offer. Now take a look at Newmar's Cypress fifth wheel. For stepping up, you can't beat the value, fit and finish of Cypress. That's the difference that sets it apart.

It begins with Newmar's legendary, old-world craftsmanship. Your peace of mind is job one...and comfort is a major element of that. Details like sculpted carpet with high-density padding, hardwood raised panel cabinet doors, freestanding dinette table and chairs — both with hidden storage — plus a full video and audio entertainment center all remind you this is no ordinary fifth wheel.

Gliding and reclining living room chairs, and Hide-A-Bed sofa provide home-style relaxing after long days of travel and adventures. Touches like living room ceiling fan, large living room mirrors and decorative wall borders cater to the homey feel. Cypress is a premium fifth wheel you'll be proud to own for years to come. And Newmar workmanship ensures that it's as robust then as the day you bring it home from your dealer.

Let your experience guide you. Your sense of value will revel in Cypress comfort, performance and quality. Cypress by Newmar. When you know the difference.

It knows *this* fifth wheel is

a perfect blend

of comfort,

performance,

value . . . and fun!

37LSRE shown above with optional Diamond Package.



Discover the Affordable *Luxuries.*

...that come standard in the Cypress kitchen and dining area—a space designed to encourage gatherings and relaxation. The warm, inviting atmosphere begins with the beautiful and thoughtfully designed cabinets. They offer ample storage with cathedral height and a touch of elegance thanks to the Tucson Ash raised-panel hardwood doors. The cabinets coordinate perfectly with hardwood-edged laminate countertops, wood laminate steps with hardwood bullnosing, decorative wall border, and durable vinyl floor throughout the kitchen and foyer. They feature extra deep kitchen drawers for added space and a convenient toe kick. The eight-cubic-foot refrigerator, 22-inch oven and three-burner cooktop with piezo ignition make meal preparation a snap. Don't forget the extras that come standard, like the paper towel holder, built-in Corian® knife block, molded silverware divider tray and Teflon® sink cover. Enjoy dinner time at the "Super Slider" free-standing dinette table with lift-top storage and the dinette chairs that hide in-seat storage. Switches and systems controls are thoughtfully grouped for easy access.





37LSRE shown above with optional Diamond Package.

Discover Your Traveling

It's just a few steps away and has all the comforts of home, plus a few more. From the large 60-inch by 80-inch bed with quilted bedspread and coordinating shams to the one-piece fiberglass shower with molded seat and glass enclosure, the bedroom suite is built to impress. The sculpted carpeting with high-density padding, quilted fabric headboard and padded valances offer home-like styling. Touches such as a SuperStorage™ wardrobe with two full-width shoe racks and top shelf cedar lining, along with a cedar-lined laundry hamper, provide simple luxuries. More storage can be found by effortlessly lifting the bed to reveal a spacious, carpeted storage area. Two built-in speakers allow you to enjoy music from the Cypress entertainment center. Day-night pleated window shades offer just the desired amount of light to set the mood.

The bathroom area adds more comfort and amenities to the suite. The roomy shower is well lit with an overhead courtesy light and skylight. The sink area is made to please with a laminate countertop with hardwood edging, medicine cabinet with deluxe lighting, toothbrush holder and soap dish. A residential-style toe kick can be found on the door-side vanity. The water closet offers its own Create-A-Breeze™ vent with auto lift. A towel bar and two robe hooks help round out the standard conveniences.

37LSRE shown with optional Diamond Package.



Suite!



Newmar Value...

Quality Circle Award

Newmar has been recognized by the RV Dealer Association Quality Circle Award for its efforts on behalf of customers and dealers.

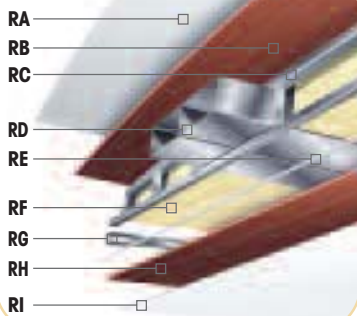


Newmar Express Limited Warranty

As proof of our commitment to you, we at Newmar back every Cypress fifth wheel with our industry-leading, one-year Newmar Express Limited Warranty. Ask your dealer for details.



Roof R Value = 13



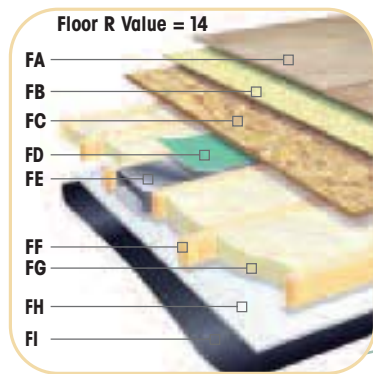
- RA.** Strong, durable BriteTEK® Roof
- RB.** "Walkable" Roof Decking
- RC.** Aluminum Rafter Framing
- RD.** Central Air Conditioning Ducting
- RE.** Sikaflex® Adhesive

- RF.** R-11 Fiberglass Batten Insulation
- RG.** Aluminum Stringer Framing
- RH.** 3/16" Plywood Ceiling Panel
- RI.** Vinyl Overlay

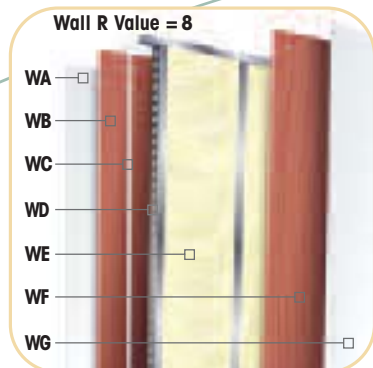
in Every Cypress

Your Cypress fifth wheel reflects Newmar's long history of product innovation and industry "firsts." You can depend on the exacting standards and meticulous care by which this fifth wheel is built. It's a showcase for Newmar value.

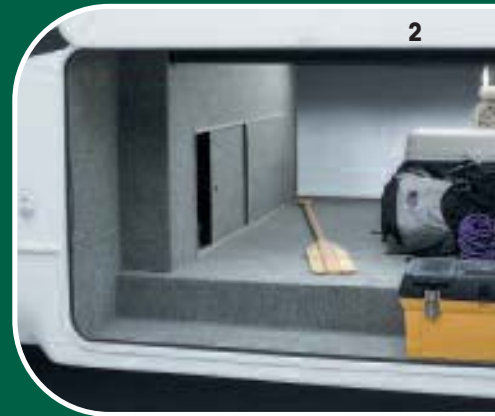
- A.** Aerodynamic Gelcoated Fiberglass End Caps
- B.** Gelcoated Exterior Sidewall
- C.** Dark Tinted Safety Glass
- D.** Dual Battery Box
- E.** Molded Lower Sidewall Skirting and Gooseneck
- F.** Power Front Jacks w/ Manual Override
- G.** Pass-Through SuperStorage™
- H.** 12" I-Beam Custom-Built Frame
- I.** Full Height Frame Outriggers
- J.** EZ Lube® Hubs
- K.** MOR/ryde® RE Suspension
- L.** Radius Aluminum Roof Wraps
- M.** 15,000 BTU Total Comfort™ Ducted Air Conditioning
- N.** 16" O.C. Aluminum Sidewall Studding
- O.** BriteTEK® Roof
- P.** "Walkable" Roof Decking
- Q.** 16" O.C. Aluminum Roof Rafter
- R.** Side Awning



- FA.** Carpet/Vinyl Floor
- FB.** Residential Grade Carpet Padding
- FC.** 5/8" Floor Decking
- FD.** Foam Panel for Added Insulation and Noise Reduction
- FE.** Aluminum Heat Ducting
- FF.** 2" x 3" Wood Floor Joists
- FG.** R-7 Fiberglass Batten Insulation
- FH.** 5/8" Bead Foam Insulation
- FI.** Aluminum Underbelly 4' x 8' Sheets



- WA.** Gelcoated Fiberglass Exterior Sidewall
- WB.** 3/16" Plywood Exterior Wall
- WC.** Sikaflex® Adhesive
- WD.** Aluminum Framing with C-Channels
- WE.** R-7 Fiberglass Batten Insulation
- WF.** 3/16" Plywood Interior Wall
- WG.** Vinyl Overlay



1. Cypress rides confidently on 16-inch 8-lug nut Goodyear® G-rated tires as standard equipment (shown with optional polished aluminum wheels).

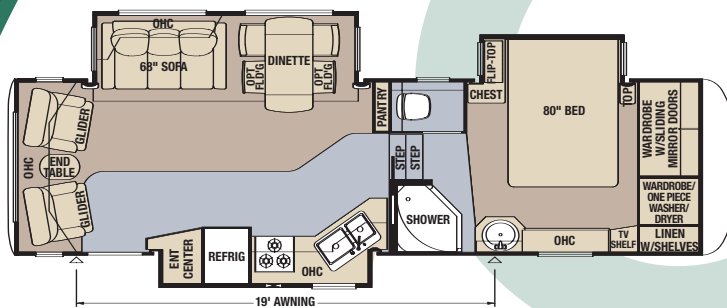
2. Expansive pass-through SuperStorage™ area is heated and lighted. It boasts a handy cargo hook and three-way access. It also provides access to the separate utility compartment and houses the water pump for sound isolation.

3. The Newmar designed slideout mechanism provides years of smooth, dependable service.

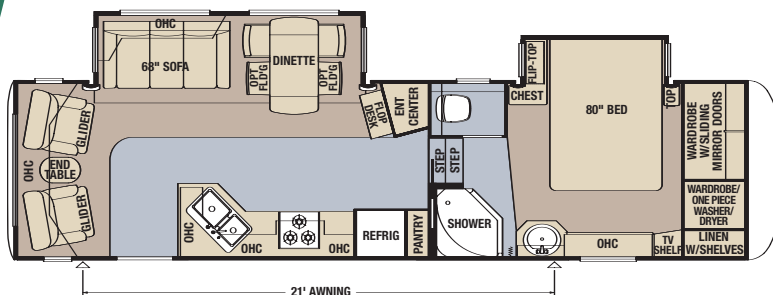
4. The electrical box is conveniently located in the water closet and houses 12-volt and 110-volt electrical system circuit breakers with color coded wiring.

Model CPFW 30KSRE

Tire Size	235/85R16-G
GAWR	6,000
GVWR	14,000
App. Length	33' 7"
App. Height	12' 11"
Width	97"
App. Dry Weight	11,950
App. Hitch Weight	2,270
Fresh Water (gal.)	75
Grey (gal.)	84
Sewage Cap. (gal.)	42
App. Hitch Height	47"
Heat Cap. (BTU)	35,000

**Model CPFW 32CKRE**

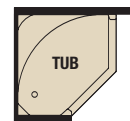
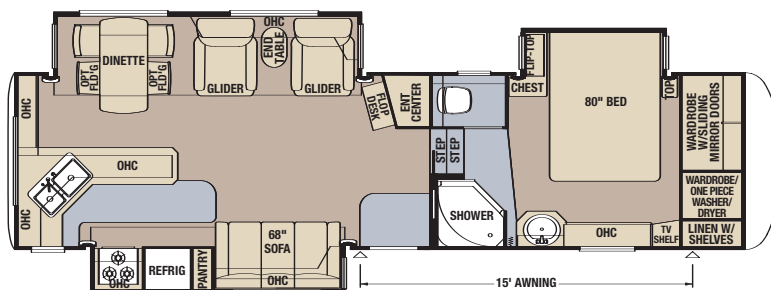
Tire Size	235/85R16-G
GAWR	6,000
GVWR	14,625
App. Length	35' 1"
App. Height	12' 11"
Width	97"
App. Dry Weight	11,600
App. Hitch Weight	2,260
Fresh Water (gal.)	75
Grey (gal.)	84
Sewage Cap. (gal.)	42
App. Hitch Height	47"
Heat Cap. (BTU)	35,000



Built-In Booth Dinette with
(2) Drawers option available on
all models.

Model CPFW 32LKSA

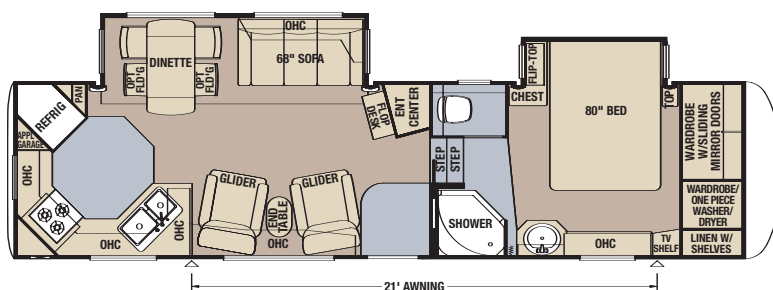
Tire Size	235/85R16-G
GAWR	6,000
GVWR	14,625
App. Length	35' 4"
App. Height	12' 11"
Width	97"
App. Dry Weight	12,105
App. Hitch Weight	2,360
Fresh Water (gal.)	75
Grey (gal.)	84
Sewage Cap. (gal.)	42
App. Hitch Height	47"
Heat Cap. (BTU)	35,000



Fiberglass Tub with Glass Door
option available on all models.

Model CPFW 32RKSL

Tire Size	235/85R16-G
GAWR	6,000
GVWR	14,625
App. Length	35' 2"
App. Height	12' 11"
Width	97"
App. Dry Weight	11,730
App. Hitch Weight	2,340
Fresh Water (gal.)	75
Grey (gal.)	84
Sewage Cap. (gal.)	42
App. Hitch Height	47"
Heat Cap. (BTU)	35,000



72" x 80" BED

King-Size Bed available on
all models.

Optional Cypress Diamond Package

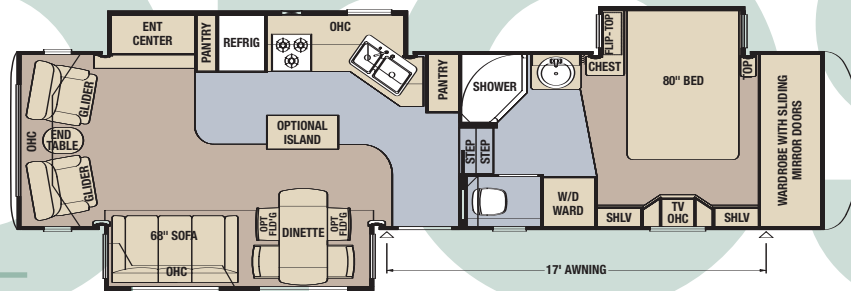
- Padded Vinyl Ceiling
- Second Sink Cover
- Halogen Ceiling Lights
- Upgraded Slide Fascias
- Polished Aluminum Rims
- Decorative Wardrobe Header

- Convenience Package: (Hair Dryer, Pillow-Top Mattress, Cordless Vac, Floor Safe, Sofa and Bed Pillows)
- Letter and Key Holder
- Deluxe Living Room Mirror
- Upgraded Headboard w/ Bed-Post Accents
- Rear Ladder

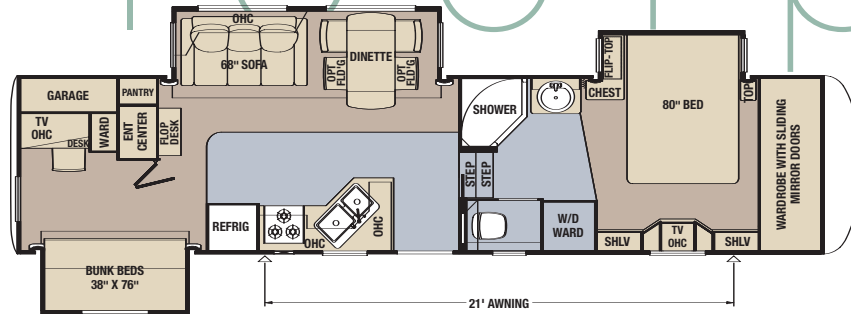
- Tripod SAT Prep
- Washer/Dryer Prep
- 6-Panel Interior Passage Doors
- Polar-Pak R-19 Insulation (roof, floor, front and rear end caps)
- Exterior Vinyl Graphics w/ Partial Paint



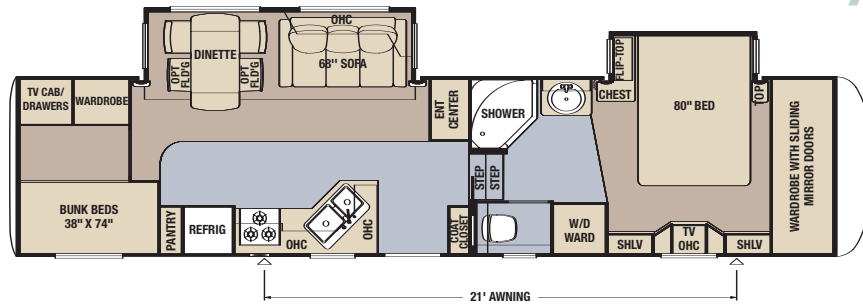
Model	CPFW 35KSRL
Tire Size	235/85R16-G
GAWR	7,000
GVWR	16,250
App. Length	38' 7"
App. Height	12' 11"
Width	97"
App. Dry Weight	12,920
App. Hitch Weight	2,585
Fresh Water (gal.)	75
Grey (gal.)	84
Sewage Cap. (gal.)	42
App. Hitch Height	47"
Heat Cap. (BTU)	35,000



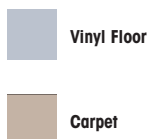
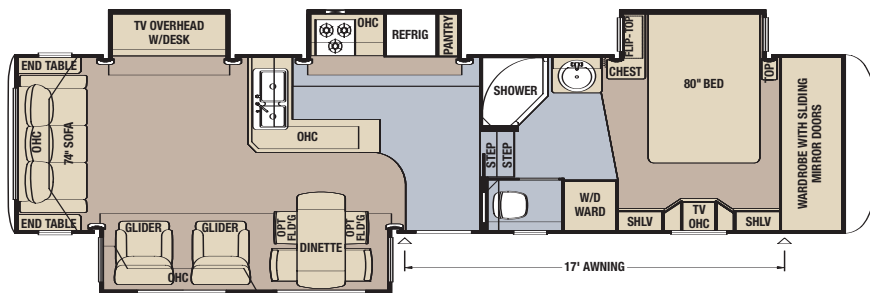
Model	CPFW 35R8CK
Tire Size	235/85R16-G
GAWR	7,000
GVWR	16,250
App. Length	38' 7"
App. Height	12' 11"
Width	97"
App. Dry Weight	13,260
App. Hitch Weight	2,555
Fresh Water (gal.)	75
Grey (gal.)	84
Sewage Cap. (gal.)	42
App. Hitch Height	47"
Heat Cap. (BTU)	35,000



Model	CPFW 36CKDB
Tire Size	235/85R16-G
GAWR	7,000
GVWR	16,250
App. Length	38' 10"
App. Height	12' 11"
Width	97"
App. Dry Weight	12,655
App. Hitch Weight	2,530
Fresh Water (gal.)	75
Grey (gal.)	84
Sewage Cap. (gal.)	42
App. Hitch Height	47"
Heat Cap. (BTU)	35,000



Model	CPFW 36PKRL
Tire Size	235/85R16-G
GAWR	7,000
GVWR	16,250
App. Length	39' 7"
App. Height	12' 11"
Width	97"
App. Dry Weight	13,565
App. Hitch Weight	2,645
Fresh Water (gal.)	75
Grey (gal.)	84
Sewage Cap. (gal.)	42
App. Hitch Height	47"
Heat Cap. (BTU)	35,000



Standard Vinyl Graphics

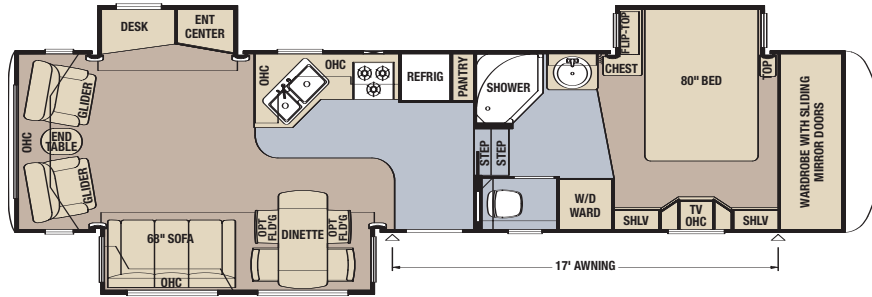


Optional Vinyl Graphics w/ Partial Paint

ready
when you are

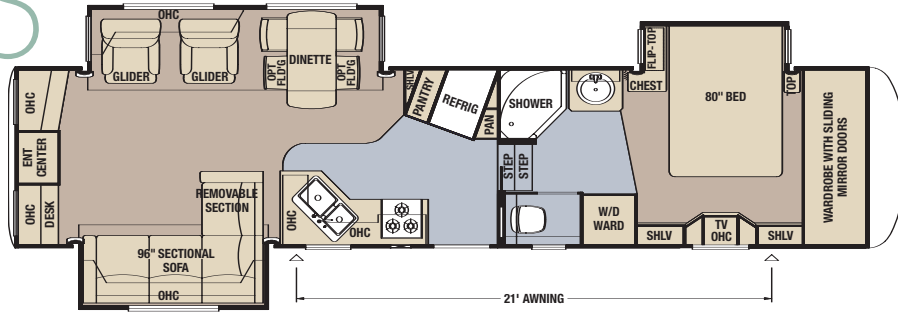
Model CFW 36RLSK

Tire Size	235/85R16-G
GAWR	7,000
GVWR	16,250
App. Length	38' 11"
App. Height	12' 11"
Width	97"
App. Dry Weight	12,970
App. Hitch Weight	2,595
Fresh Water (gal.)	75
Grey (gal.)	84
Sewage Cap. (gal.)	42
App. Hitch Height	47"
Heat Cap. (BTU)	35,000



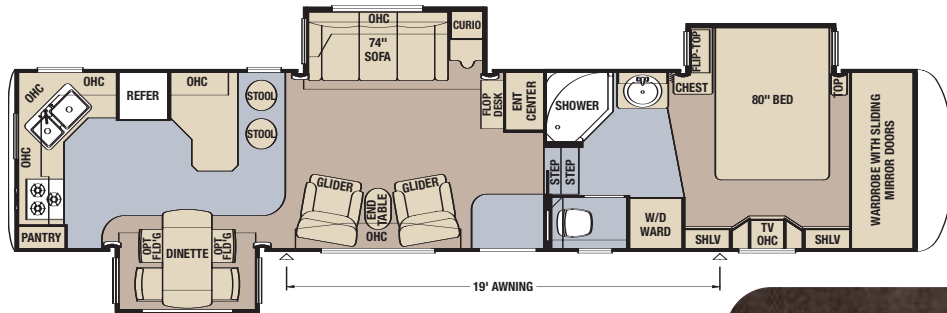
Model CFW 37LSRE

Tire Size	235/85R16-G
GAWR	7,000
GVWR	16,250
App. Length	40' 1"
App. Height	12' 11"
Width	97"
App. Dry Weight	13,360
App. Hitch Weight	2,670
Fresh Water (gal.)	75
Grey (gal.)	84
Sewage Cap. (gal.)	42
App. Hitch Height	47"
Heat Cap. (BTU)	35,000



Model CFW 39CLSK

Tire Size	235/85R16-G
GAWR	7,000
GVWR	16,250
App. Length	41' 11"
App. Height	12' 11"
Width	97"
App. Dry Weight	13,570
App. Hitch Weight	2,675
Fresh Water (gal.)	75
Grey (gal.)	84
Sewage Cap. (gal.)	42
App. Hitch Height	47"
Heat Cap. (BTU)	35,000



Interior Color Options

(Standard)
Tucson Ash



(Standard)
Vinyl Flooring



(Optional)
Plank Flooring



Truffle



(Standard)
Countertop



(Standard)
Hardware



Lakeside



Palm



South Beach



CYPRESS Great 8 Value



Stylish and comfortable Hide-A-Bed sofa.



"Super Slider" freestanding dinette table and (2) fixed chairs, all with hidden storage compartments.



Comfortable gliding, reclining chairs (per floorplan), plus end table with magazine rack.



Insulated and heated holding tanks are protected by the fully-enclosed underbelly.



Conveniently located dual battery box compartment accepts your choice of RV batteries.



Undermounted 16-inch G-rated Goodyear® spare tire is easy to access with lift kit.



EZ Lube® axles allow RVers to periodically lubricate the bearings without removing hubs from the axles. (Shown with optional polished aluminum wheels.)



Dark tinted safety glass windows provide protection from sun and added privacy—and enhance the RV's distinctive good looks.

Standard Interior Value Features



Fully adjustable sliding pantry drawers provide plenty of storage!



Spacious, one-piece fiberglass shower with easy-to-clean molded seat and glass enclosure.



SuperStorage® bedroom wardrobe with (2) full-width shoe racks and top shelf cedar lining.



Create-A-Breeze™ vent with automatic lift in water closet.



15,000 BTU **Total Comfort**™ central air conditioning system is engineered and ducted to effectively cool all living areas.

(Shown with optional Create-A-Breeze™ vent.)

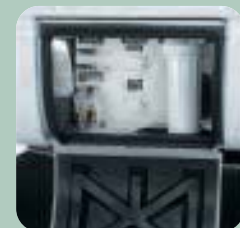
Standard Exterior Value Features



MOR/ryde® RE suspension significantly cushions and absorbs road shock to provide a softer ride and smoother, safer towing.



Late-night hook-up light at sewer hose termination point.



In-line water filter helps ensure plenty of clean, clear water wherever you travel.

Optional Features

Air Conditioner & Heating

15,000 BTU Penguin™ AC*
15,000 BTU Penguin™ Heat Pump AC*
Extra 13,500 BTU Penguin™ AC in Bedroom
Wire & Brace for Second AC in Bedroom

Appliances & Accessories

14" Flat Screen TV in Bedroom
14" Flat Screen TV in Bunkroom**
26" LCD TV in Ent. Center*/**
32" LCD TV in Ent. Center* (37LSRE Only)
Iceemaker Added to Refrigerator**
Norcold 10 cu. ft. Refrigerator
22" Convection Microwave & 3-Burner Plate
Convenience Package:
Includes Floor Safe, Hair Dryer, Cordless Vac,
Pillow-top Mattress & Sofa Bed Pillows †
Central Vacuum w/ Floor Port & Tool Kit
Electric Fireplace**
Entertainment Center w/ Pull-Out Swivel/Slide
Tray at Main TV**
Prep for Ground Tri-Pod Sat. Dish w/ Phone,
TV Jack and Recept †
Roof-Mount Satellite Dish
Prep for Washer & Dryer †
Compact Washer & Dryer**
Stackable Washer & Dryer**

Cabinets & Furniture

Built-In Booth Dinette
First Faux Leather, Euro Recliner
w/ Ottoman*/**
Second Faux Leather, Euro Recliner
w/ Ottoman*/**
72" x 80" King Bed w/ King Coil Mattress
Island Kitchen Base Cabinet (35KSRL Only)
Kitchen Countertop Extension**
Fixed Dinette Chairs (2) w/ In-Seat Storage
Folding Dinette Chairs (2) w/ In-Seat Storage
Folding Desk Chair**
Freestanding Sofa Ottoman w/ Storage

Electrical Features

7.0 kW Onan® Generator w/ Energy
Command, Auto Changeover** (Includes Prep)
Gen Prep (Includes Energy Command, Start Switch,
Fuel Tank & Gauge)
Battery Disconnect Switch for House Battery
Halogen Ceiling Lights Throughout †
Solar Prep (Includes Wire from Roof
to Battery Compartment)

Exterior Features

Bike Rack Carrier
Cargo Net in Pass-Through SuperStorage™
Exterior Pull-Out Storage Tray
Rear 12V Power Twin Stabilizer Jacks*
Rear Ladder** †

Interior Features

Simulated Plank Floor in Kitchen & Foyer
Second Sink Cover †

Plumbing/Bath Features

Exterior Shower (Located on Off-Door Side)
Fiberglass Tub w/ Glass Door
12V Heat Pads for Holding Tanks (N/A on CSA Units)

Towable Chassis Features

3" Non-Adjustable Lift Kit
MOR/ryde® Rubber Pin Box
Polished Aluminum Wheels †

Construction Features

PolarPak R-19™ Insulation in Roof, Floor,
Front & Rear End Caps †

2007 CYPRESS Fifth Wheel

Standard Features

Air Conditioning & Heating

15,000 BTU Total Comfort™ Central AC
(2) 30-lb. Propane Gas Bottles w/
Auto. Regulator
35,000 BTU Furnace w/ In-Floor Ducted Heat
LP Leak Detector

Appliances & Accessories

10 Gal. Gas/Electric DSI Water Heater
Microwave
Entertainment Package:
24" TV & Surround Sound System w/ DVD,
CD & AM/FM Stereo Tuner
8 cu. ft. Refrigerator w/ Thermostat
3-Burner Cooktop w/ Piezo Ignition
22" Oven
Flush-Mounted, Metal Bi-fold Range Cover
Cable TV Connection w/ RG-6 Coax
Living Room Ceiling Fan
Corian® Knife Block behind Range
Hardwood, Raised, 6-Panel Refrigerator Front
Magazine Rack in Water Closet**
Paper Towel Holder in Kitchen
Range Hood w/ Light & Fan
Phone Jack in Living/Kitchen Area
TV Antenna w/ Power Booster
& (2) Interior Jacks
Bedroom Speakers (2) w/ On/Off
Toggle Switch

Cabinets & Furniture

Tucson Ash, Hardwood Raised-Panel
Cathedral OHC Doors
Pre-Drilled and Screwed Cabinetry
Hide-A-Bed Sofa
Glider/Recliner Chairs**
Bar Stools**
Chair End Table w/ Magazine Rack**
Metal Drawer Guides
"Super Slider" Freestanding Dinette Table
w/ Lift-Top Storage
(2) Fixed Dinette Chairs w/ In-Seat Storage
Laminate Kitchen & Bath Countertops
w/ Hardwood Edging
Acrylic Kitchen & Bath Sinks
SuperStorage™ Bedroom Wardrobe w/
(2) Full-Width Shoe Racks & Top Shelf
Cedar Lining
Laundry Hamper w/ Cedar Lining
Hydraulic Lifts on Bed Top
Kitchen Pantry**
Living Room Mirror**
Computer Desk**
Decorative Bedroom Dresser Toe Kick
60" x 80" Queen Innerspring Mattress

Windows, Awnings & Vents

Carefree™ 1-Touch Awning w/ Wind Smart
Sensor & Remote
Carefree™ Summit Slideout Cover Package
Create-A-Breeze™ Vent w/ Auto. Lift in Kitchen
Create-A-Breeze™ Vent w/ Auto. Lift over Bath Sink
Clear Skylight in Bath, Kitchen & Living Room
CSA (Canadian Dealers Only)
Double-Pane, Tinted Safety Glass Windows
State Seal for KY, NE, OR & WA

Exterior & Interior Décor Choices

Exterior Vinyl Graphics w/ Painted Skirt
Lakeside South Beach Palm Truffle

Electrical Features

12V Lighting Throughout (Not Including Dinette)
50 Amp Electrical Service w/ Detachable Cord
55 Amp Converter
Convenience Lights at:
Main Entry Door, Entry Door Step, Sewer Hook-Up,
Hitch & Water Works Compartments
Decorative Light over Dinette
Dual Battery Box Compartment
Dual Exterior Security Lights
Fluorescent Light over Kitchen Sink
Lighted Exterior Storage Compartments
Wall Reading Lights in Living Area Slideouts

Exterior Features

Vinyl Graphics
30" Gelcoated, Radius Entry Door
BriteTEK™ Roof w/ "Walkable" Decking
& Radius Aluminum Roof Wrap
Cargo Hook in Exterior Storage Area
Extendable Grab Handle at Entrance Door
Gelcoated Exterior Sidewalls & Baggage Doors
Gelcoated Fiberglass End Caps
Molded Gooseneck & Pass-Through
Storage Wraps
Molded Fender Wells
Power Front Jacks
Quick Release H/D Pin for Front Jack Legs
Rear Skid Bars Prepped for Bike Rack
Attachment
Rear Stabilizer Jacks
Triple Entrance Door Step
Heated Pass-Through SuperStorage™
Basement Compartment
Dedicated Compartment in Basement
for Utilities

Interior Features

Sculpted Carpet w/ High-Density Padding
in Living Room & Bedroom
Vinyl Floor in Kitchen, Foyer & Bath
Fire Extinguisher, Smoke Detector & Carbon
Monoxide Detector
Day/Night Pleated Window Shades w/ Jabots
in Living Room & Bedroom
Decorative Wall Border
Interior Assist Handle at Main Entry Door
Kitchen Wastebasket
Lazy Susan in Kitchen OHC**
Quilted Bedspread w/ Shams
Quilted Fabric Headboard w/ Beveled Mirrors
Molded Silverware Divider Tray
Teflon® Sink Cover
Laminate Woodgrain Steps w/ Hardwood
Bullnose Trim
Décor Glass Accents in Living Room

Plumbing/Bath Features

Bath Accessories:
Toilet Paper Holder, Toothbrush Holder, Soap Dish,
Towel Bar & (2) Robe Hooks
One-Piece Fiberglass Shower w/
Molded Seat & Glass Enclosure
High Rise Kitchen Faucet w/ Single Lever
Control and Separate Pull-Out Sprayer
Medicine Cabinet w/ Deluxe Lighting
Monitor Panel
Sewage Holding Tank Rinse
Sewage Hose Storage Tray
Lighted, Heated and Enclosed Exterior Water
Works Compartment
Theford™ Aqua Magic Toilet w/ Sprayer
Shower Courtesy Light
In-Line Water Filter
Water Heater Bypass

Construction Features

12" I-Beam Custom-Built Frame
5/8" Structurewood Floor Decking
Aluminum Framed Sidewalls, Roof,
Front & Rear on 16" Centers
Fully Heated & Insulated Holding Tanks
Enclosed Underbelly w/ 4'x8' Sheets
of Aluminum Laminated to 5/8" Bead
Foam Insulation
Extended Pin Box
Composite R-Values of...
Roof R-13, Sidewall R-8, Floor R-14

Windows, Awnings & Vents

Create-A-Breeze™ Vent w/ Automatic
Lift in Water Closet
Carefree® Fiesta Side Awning
Bathroom Window, Blind and Valance
Dark Tinted Safety Glass Windows
Shower Skylight
Decorative Window Treatments w/ Jabots
Large Picture Window in Dinette

Chassis Features

Undermounted 16" G-Rated Goodyear®
Spare Tire w/ Lift Kit
MOR/ryde® RE Suspension
EZ Lube® Axles
16" G-rated Goodyear® Tires

* in lieu of standard

** as shown in floorplan

† included in Diamond Package



WHEN YOU KNOW THE DIFFERENCE™

NEWMAR CORPORATION

355 N DELAWARE ST PO BOX 30
NAPPANEE IN 46550-0030
574-773-7791 Fax 574-773-2895
www.newmarcorp.com

Your Official Cypress Dealer:

Cypress on cover shown with optional polished aluminum rims and optional vinyl graphics with partial paint. Some features in our literature are optional. Colors and finishes are photographic representations. The actual materials may look different. Prices, specifications and floorplans are subject to change at Newmar's discretion, without prior notice or obligation. Please see your dealer for actual samples and specifications.
©2006 Newmar Corporation. Litho in USA. NEW21252 5/06-30M