



**KOUNTRY STAR**  
2007 | GAS MOTORHOME

**KOUNTRY STAR**  
2007 | GAS MOTORHOME





**KOUNTRY STAR**  
2007 | GAS MOTORHOME



## LIFE IN THE LUXURY LANE

It's not the road you take or how fast you get there that matters—it's how you arrive. And what better way to make an entrance than in the 2007 Kountry Star? An RV constructed with Newmar's signature craftsmanship. Built with innovations like a driver's-side door. And enhanced with versatile floorplans. Plentiful amenities. And sophisticated styling. Wherever you go in your Kountry Star, expect a path paved in comfort, convenience...and luxury.





#### YOUR KOUNTRY STAR KITCHEN

The Kountry Star's kitchen is equipped with appliances and features that make storage, meal preparation and clean-up a breeze. A pullout sink faucet for easier use. An optional four-door Norcold® refrigerator with icemaker and water dispenser for true, home-style functionality.



#### EASY-GLIDE DRAWERS

Residential-style, ball-bearing drawer guides throughout the coach allow smooth, full-drawer extension.



#### WALL-BED

With a comfortable fold-down bed that conveniently stores in the wall, the Kountry Star allows you to switch from living area to bedroom in a matter of moments (3514 Floorplan).

#### BATHROOM AMENITIES

Solid-surface countertops and ample cabinet space are but a few of the Kountry Star bathroom's thoughtful conveniences.

#### SOFT, RESTFUL SLEEP

Your Kountry Star bed features a tufted mattress and a quilted bedspread with matching shams and accent pillows.





**KOUNTRY STAR**  
2007 | GAS MOTORHOME

#### COCKPIT COMFORT

The driver's area features Ultra Leather Cirrus front seats, with six-way power adjustment for the driver. And a flat-screen color television provides entertainment for passengers.

#### EXTERIOR MIRRORS

The remote-controlled, exterior mirrors with defrost capability and built-in turn signals provide a clear view.



#### STEP STORAGE

Keep shoes or any kind of small necessities handy in this compact storage compartment built right into the coach's top entrance step. Just lift the sturdy tread-covered lid for access.



#### PASS-THROUGH STORAGE

Stow all your favorite travel gear—from either side of the coach—in this huge exterior pass-through compartment. Top-hinged doors and bright interior lighting make access easy.



#### EXTERIOR BATTERIES

Your Kountry Star gives you two 6-volt batteries mounted on an easily accessible pullout tray and housed in their own exterior compartment.





## COMPLETE CONTROL... TOTAL COMFORT

---

When you're ready to hit the open road, the optional driver's-side door with a power window provides convenient entry and exit for the driver. The black-and-white rearview monitor system with audio is within easy view. An AM/FM in-dash radio with a cassette and CD player provides plenty of music options. And, to help you stay the course, an optional electronic compass—with an exterior temperature display in the dash—is ready to guide you.





## KOUNTRY STAR

2007 | GAS MOTORHOME



### CEILINGS: R-VALUE = 16

- a. BriteTEK™ Roof
- b. 9 mm Wood Decking
- c. Fiberglass Batten Insulation
- d. A/C Ducting
- e. Aluminum Roof Truss
- f. Kraft Paper Vapor Barrier
- g. 5/8" Bead Foam
- h. 3/16" Panel
- i. Padded Vinyl Overlay

### WALLS: R-VALUE = 11

- j. 3/16" Plywood Interior Wall
- k. 5/8" Bead Foam
- l. Kraft Paper Vapor Barrier
- m. Fiberglass Batten Insulation
- n. 3/16" Plywood Exterior Wall
- o. Composite One-piece Gelcoat Exterior Sidewall
- p. 16" On-center Aluminum Framing with 3 1/2" Header

### FLOORING: R-VALUE = 11

- q. Carpet/Tile
- r. Carpet Padding
- s. 5/8" Floor Decking
- t. Fiberglass Batten Insulation
- u. 2" x 3" Wood Framing
- v. Polyethylene Moisture Barrier
- w. Aluminum Ducting

- 1. Two 13.5M Central Air Conditioners
- 2. Stainless Steel Wheel Simulators
- 3. Double-pane Tinted Safety-glass Windows
- 4. Side-Hinged Baggage Doors

## PROTECTED C-CHANNELS

To keep the electrical wiring that runs through holes in the aluminum-frame C-channels from chafing, each hole is ringed with a rubber grommet.

## 16" ON-CENTER FRAMING

Just like a fine site-built residential home, your Newmar home is framed 16 inches on center, which allows the best placement of outlets, switches and other components.

## SIKAFLEX®

Used throughout Newmar construction, Sikaflex® elastic adhesive is one of the strongest bonding agents on the market today. It also serves as a sealant against air and water. And it helps dampen both sound and vibration.

## NEWMAR TOTAL COMFORT™ CENTRAL AIR CONDITIONING



Experience RV air conditioning just like that found in site-built homes. Newmar's Total Comfort Central Air Conditioning is actually two separate, fully ducted systems: one to distribute incoming cool air, the other to quickly and effectively remove warm air from every living area.

## FULL-PAINT MASTERPIECE FINISH™

Newmar's Full-Paint Masterpiece Finish raises the exterior beauty and durability of our motorhomes to a whole new level. This model year, we're offering our richest-looking graphics ever—to lend even more character and class. As industry leaders in applying full body paint to motorhome coaches, we at Newmar are pleased to offer the Full-Paint Masterpiece Finish as a Kountry Star Gas Motorhome standard.





a.



d.



b.



e.



c.



f.



#### WOOD FINISHES & INTERIORS

- a. Tucson Oak Cabinetry, Standard
- b. Ericsburg Cherry Cabinetry
- c. Maple Cream Cabinetry

- d. Gray Dusk Color Scheme with flooring options (top to bottom): vinyl (standard), simulated marble and plank (matches cabinetry)
- e. Ripe Plum Color Scheme with flooring options (top to bottom): vinyl (standard), simulated marble and plank (matches cabinetry)
- f. Bay Gold Color Scheme with flooring options (top to bottom): vinyl (standard), simulated marble and plank (matches cabinetry)

Some features shown in our literature are optional. Colors and finishes are photographic representations. The actual materials may look different. Prices, specifications and floorplans are subject to change at Newmar's discretion, without prior notice or obligation. Please see your dealer for actual samples and specifications.

DETAILS, DETAILS, DETAILS. Go ahead. Get close. Real close. You'll see that this motorhome's comfort and styling aren't superficial: They're built into the very weave of our fabrics, the very grain of our cabinets and every nook and cranny you might want to scrutinize. After all, it's details that make the Newmar difference.



BAY GOLD



GRAY DUSK



RIPE PLUM



# KOUNTRY STAR

2007 | GAS MOTORHOME

## KSCA 3514

Length: 35' 2"  
Width: 101.5"

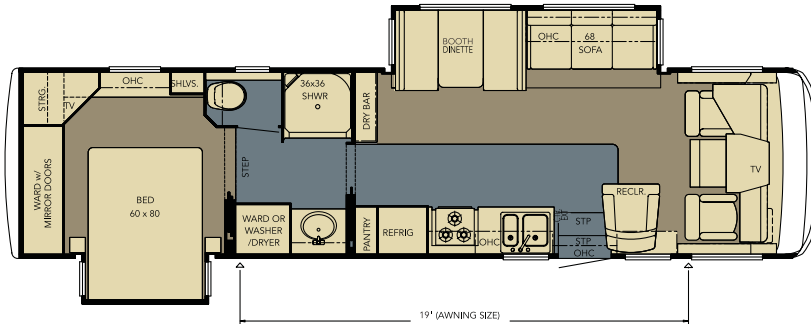
- Options:
- K127\_2
  - K545\_2
  - K783\_2
  - K785



## KSCA 3550

Length: 35' 5"  
Width: 101.5"

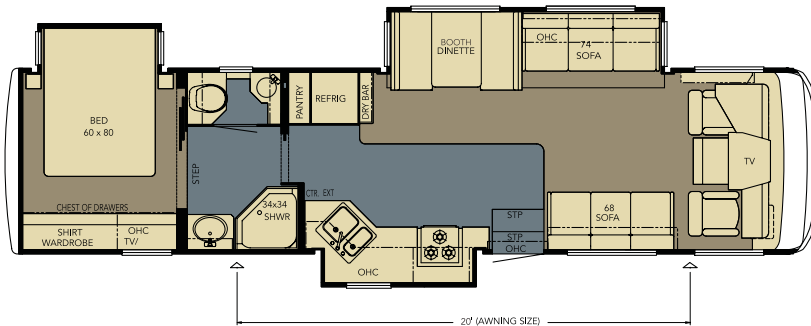
- Options:
- J587
  - K127
  - K545
  - K783



## KSCA 3680

Length: 36' 4"  
Width: 101.5"

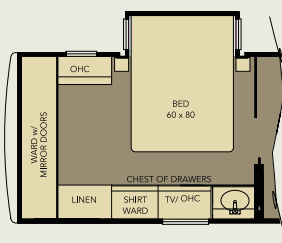
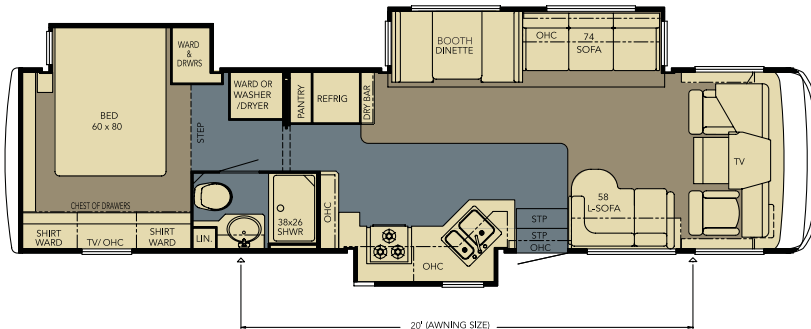
- Options:
- J586\_2
  - K127
  - K545
  - K783
  - K864
  - K866



## KSCA 3681

Length: 36' 5"  
Width: 101.5"

- Options:
- J586
  - K127
  - K545
  - K783
  - K864
  - K866



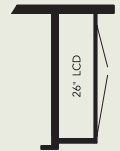
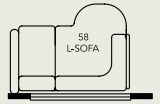
## K720

Rear Wardrobe Center  
3762



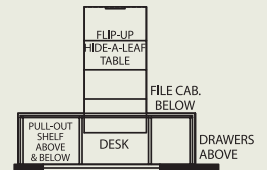
## J586

LCD TV in Living Area  
3681



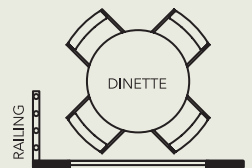
## J587

LCD TV in Living Area  
3550, 3762



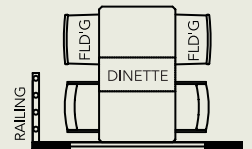
## K127\_2

Combination Desk (ILO Standard)  
3514



## K545-2

Round Dinette  
with Larger Window  
3514



## K783-2

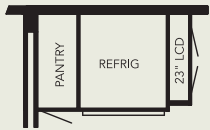
Dinette  
3514



## K864

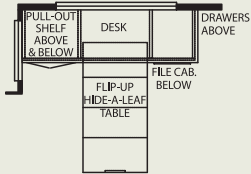
Entertainment Center with TV  
(ILO Standard TV and Sofa)  
3680, 3681, 3761





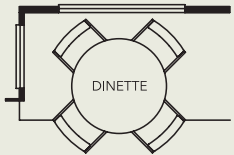
## J586\_2

LCD TV in Living Area  
3680, 3761



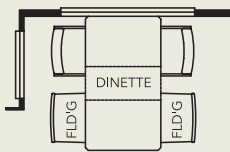
## K127

Combination Desk (ILO Standard)  
3550, 3680, 3681, 3760, 3761, 3762



## K545

Round Dinette  
with Larger Window  
3550, 3680, 3681, 3760, 3761, 3762



## K783

Dinette  
3550, 3680, 3681, 3760, 3761, 3762



## K785

84" Sofa (ILO Chairs)  
3514



## K866

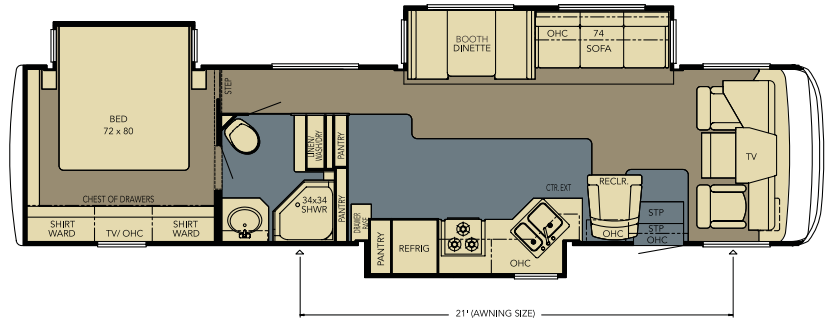
Desk with TV  
(ILO Standard TV and Sofa)  
3680, 3681, 3761

## KSCA 3760

Length: 37' 5"  
Width: 101.5"

Options:

- K127
- K545
- K783

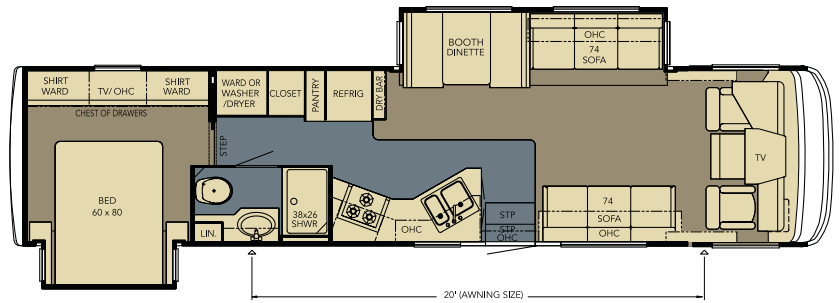


## KSCA 3761

Length: 37' 4"  
Width: 101.5"

Options:

- J586\_2
- K127
- K545
- K783
- K864
- K866

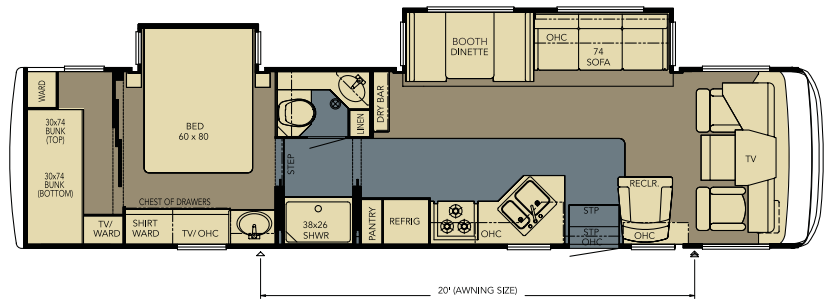


## KSCA 3762

Length: 37' 3"  
Width: 101.5"

Options:

- J587
- K127
- K545
- K720
- K783



Carpet Vinyl Flooring





## STANDARD FEATURES

### CHASSIS FEATURES

- Workhorse™ W-24 Chassis
- Electric Leveling Jacks with Touch Control
- Cruise Control
- Tilt Steering Wheel
- Stainless Steel Wheel Simulators

### AIR CONDITIONING & HEATING

- Two 13.5M Penguin™ Central Air Conditioners
- Propane Furnace with In-floor Ducted Heat
- Dash Heater and High-output Air Conditioner
- Propane Leak Detector

### APPLIANCES & ACCESSORIES

- Three-burner Recessed Range with Glass Oven Door and Piezo Ignition
- Solid-surface Range Cover
- Dometic® 8 cu. ft. Refrigerator
- Hardwood Raised-panel Refrigerator Front
- Spacemaker® Microwave Oven
- 10 gal. Gas/Electric Water Heater with Direct-spark Ignition
- Flatscreen Color TV in Living Area
- Flatscreen Color TV in Bedroom
- AM/FM Dash Radio with Cassette and CD Player
- Sony® Surround Sound System with AM/FM Radio, DVD Player and Subwoofer
- Black and White Rearview Monitor System with Audio
- TV Antenna with Power Booster and Two Interior Jacks
- Satellite Prep
- Telephone Connection with Phone Jacks in Living and Dash Area
- Cable TV Connection with Rg6 Coax
- Two Bedroom Radio Speakers with On/Off Switch
- "TV Antenna is Up" Warning Light on Dash
- 10 Bc Fire Extinguisher, Carbon Monoxide and Smoke Detectors

### CABINETS & FURNITURE

- Oak Hardwood Raised-panel Arched Cabinet Doors
- Booth Dinette with Forward-facing Seatbelts
- Solid-surface Countertop in Kitchen with Undermounted Acrylic Sink and Flush Sink Covers
- Solid-surface Countertop in Bathroom with Undermounted Bowl
- Residential-style Full-extension Ball-bearing Drawer Guides
- Kitchen Countertop Extension\*
- Pullout Pantry\*
- Flexsteel® Furniture
- Ultra Leather Cirrus Driver/Passenger Seats with Six-way Power Driver's Seat
- Lifts on Bedtop to Access Storage Area
- Tufted Mattress with Quilted Bedsread, Shams and Accent Pillows
- SICO® Fold-down Wall Bed (3514 only)

### ELECTRICAL FEATURES

- 5.5 kW Onan® Marquis Generator with Remote Switch and Automatic Changeover
- 50 Amp Electrical Service with Flexible Cord
- Two 6 Volt House Batteries on Pullout Tray
- Battery Disconnect Switch
- 110 Volt Exterior Receptacle on Door Side
- 5 Watt Solar Panel
- 55 Amp Converter
- Daytime Headlight System
- Emergency Start Switch
- Fluorescent Ceiling Lights in Living Area

- Incandescent Lighting in Bath, Bedroom and Under Overhead Cabinets
- Lighted Wardrobe
- Manually Operated Hold-to-Run Slideout Switch
- 12 Volt Auxiliary Receptacles on Dashboard
- Interior Courtesy Lights
- Energy Management System
- Exterior TV Jack
- ICC Light Switch

### EXTERIOR FEATURES

- Full-Paint Masterpiece Finish™ with Diamond Shield Front Protective Film
- Super Storage Below Rear Bedroom Floor (N/A 3514)
- Convex Exterior Mirrors with Remote Control, Defrost and Turn Signals
- Automatic Entrance Door with Triple Step
- Side-hinged Baggage Doors (Below Slideout Rooms, Between Axles)
- Lighted Exterior Storage Compartments with Cargo Liner, Controlled by Interior Master Switch
- 6,000 lb. Towing Hitch with Two Extra 14 Gauge Wires
- Lighted Acrylic Assist Handle at Entrance Door
- Rear Ladder
- Undercoating
- Mud Flaps

### INTERIOR FEATURES

- Padded Vinyl Ceiling
- Day/Night Pleated Window Shades and Lambrequins
- Mini-blinds in Kitchen and Bathroom Areas
- Vinyl Floor in Kitchen and Bathroom Areas
- Deluxe Carpeting with High-density Padding in Living Room and Bedroom
- Flat-panel Interior Passage Doors
- Interior Assist Handle at Main Entrance Door
- Shoe Storage Located in Entrance Step Compartment
- Wastebasket in Bathroom
- Sun Shades on Driver and Passenger Side Windows
- Wraparound Windshield Privacy Shade

### PLUMBING & BATH FEATURES

- Demand Water System with Shurflo® Pump
- Sewage Holding-tank Rinse
- Water Heater Bypass System
- Thetford™ Aqua Magic Plus China Stool with Spray Attachment
- Towel Bars, Tissue Holder and Robe Hook
- Towel Ladder, on Hinged Bathroom Door Only
- Bathtub/Shower Surround with Shower Door
- Monitor Panel
- Water Pump Switches Located in Bathroom, Kitchen and Exterior Near Gate Valves
- Exterior Shower
- Water Filter for Entire Unit

### WINDOWS, AWNINGS & VENTS

- Double-pane Tinted Safety-glass Windows
- Fan-Tastic® Vent in Kitchen and Bath Area
- Skylight in Bathroom
- A&E® Weather Pro Power Side Awning
- A&E® Slideout Awning Covers
- Cockpit Overhead Ventilation System

## OPTIONAL FEATURES

### CHASSIS FEATURES

- Coated Aluminum Wheels

### AIR CONDITIONING & HEATING

- Two 13.5M Penguin™ Heat Pump Central Air Conditioners
- Auxiliary Heater in Bedroom

### APPLIANCES & ACCESSORIES

- 30" Convection Microwave Oven with Three-Burner Cooktop
- Dometic® 10 cu. ft. Refrigerator
- Norcold® 12 cu. ft. Four-Door Refrigerator\*
- Norcold® 12 cu. ft. Four-Door Refrigerator with Icemaker and Water Dispenser
- Icemaker added To Refrigerator\*
- One-Piece Washer/Dryer\*
- One-Piece Washer/Dryer Prep\*
- Electronic Compass with Exterior Temperature Displayed in Dash
- Sirius® Satellite Radio Capability (Does not include monthly subscription)
- 10 Disc CD Player
- Automatic Satellite Dish without Receiver
- 23" LCD TV in Living Area\*
- 26" LCD TV in Living Area\*
- Roof-mounted Trumpet Horn
- CB Antenna

### CABINETS & FURNITURE

- Maple Cream Cabinets
- Ericsburg Cherry Cabinets
- Ultra Leather Cirrus Swivel Rocker Recliner\*
- Ultra Leather Cirrus Free-standing Swivel Rocker Recliner\*
- Ultra Leather Cirrus Sofa\*
- Hide-a-bed Sofa\*
- Ultra Leather Cirrus Hide-a-bed Sofa\*
- Two Ultra Leather Cirrus Recliners in Bedroom\*
- Hidden-leaf Dinette Table with Four Chairs (Two Fixed, Two Folding)
- Sofa in Place of Bedroom Chairs\*
- Ultra Leather Cirrus Sofa in Place of Bedroom Chairs\*
- Six-way Power Passenger Seat
- Round Hardwood Dinette Table with Two Fixed and Two Folding Chairs
- Combination Desk/Dinette Table\*
- Desk with Flatscreen TV\*
- Entertainment Center with Flatscreen TV\*
- Luxurious Pillowtop Mattress
- Rear Wardrobe in place of Bunk\*

### ELECTRICAL FEATURES

- 600 Watt Inverter For Living Area or Bedroom TV
- Solar Prep
- 7.0 kW Onan® Generator
- Recessed Docking Lights

### INTERIOR FEATURES

- Simulated Plank Floor in Kitchen and Bath Area
- Simulated Marble Floor Tile in Kitchen and Bath Area
- Power-Activated Sun Visors

### PLUMBING & BATH FEATURES

- Assist Handle in Tub/Shower
- 110 Volt Heat Pads for Holding Tanks

### WINDOWS, AWNINGS & VENTS

- Driver's Door with Power Window
- Rear Window (Single Pane)
- A&E® 9000 Bedroom and Slideout Window Awning

\*CHECK WITH DEALERSHIP ON FLOORPLAN AVAILABILITY





## FLOORPLAN SPECIFICATIONS

FLOORPLAN	APP. OVERALL LENGTH <sup>1</sup>	WIDTH	APP. OVERALL HEIGHT	INTERIOR WIDTH	INTERIOR HEIGHT	GREY	SEWAGE	WATER	PROPANE	FURNACE	WATER HEATER
KSCA 3514	35' 2"	101.5"	12' 6"	95.5"	84"	60 gal.	40 gal.	75 gal.	25 gal.	40,000 Btu	10 gal.
KSCA 3550	35' 5"	101.5"	12' 6"	95.5"	84"	60 gal.	40 gal.	75 gal.	25 gal.	40,000 Btu	10 gal.
KSCA 3680	36' 4"	101.5"	12' 6"	95.5"	84"	60 gal.	40 gal.	75 gal.	25 gal.	40,000 Btu	10 gal.
KSCA 3681	36' 5"	101.5"	12' 6"	95.5"	84"	60 gal.	40 gal.	75 gal.	25 gal.	40,000 Btu	10 gal.
KSCA 3760	37' 5"	101.5"	12' 6"	95.5"	84"	60 gal.	40 gal.	75 gal.	25 gal.	40,000 Btu	10 gal.
KSCA 3761	37' 4"	101.5"	12' 6"	95.5"	84"	60 gal.	40 gal.	75 gal.	25 gal.	40,000 Btu	10 gal.
KSCA 3762	37' 3"	101.5"	12' 6"	95.5"	84"	60 gal.	40 gal.	75 gal.	25 gal.	40,000 Btu	10 gal.

## WORKHORSE™ CHASSIS INFORMATION

FLOORPLAN	ENGINE HP	AXLE RATIO	FUEL CAP.	WHEELBASE	FRONT GAWR <sup>2</sup>	REAR GAWR <sup>2</sup>	GVWR <sup>2</sup>	GCWR <sup>2</sup>	APP. UVW	APP. NCC
KSCA 3514	340	5.86	75 gal.	242"	9,000 lb.	15,500 lb.	24,000 lb.	30,000 lb.	19,432 lb.	4,568 lb.
KSCA 3550	340	5.86	75 gal.	234"	9,000 lb.	15,500 lb.	24,000 lb.	30,000 lb.	19,081 lb.	4,919 lb.
KSCA 3680	340	5.86	75 gal.	242"	9,000 lb.	15,500 lb.	24,000 lb.	30,000 lb.	19,947 lb.	4,053 lb.
KSCA 3681	340	5.86	75 gal.	242"	9,000 lb.	15,500 lb.	24,000 lb.	30,000 lb.	20,067 lb.	3,933 lb.
KSCA 3760	340	5.86	75 gal.	242"	9,000 lb.	15,500 lb.	24,000 lb.	30,000 lb.	20,147 lb.	3,853 lb.
KSCA 3761	340	5.86	75 gal.	248"	9,000 lb.	15,500 lb.	24,000 lb.	30,000 lb.	19,601 lb.	4,399 lb.
KSCA 3762	340	5.86	75 gal.	242"	9,000 lb.	15,500 lb.	24,000 lb.	30,000 lb.	19,641 lb.	4,359 lb.

<sup>1</sup> Lengths do not include the rear ladder.

<sup>2</sup> Specifications are supplied by chassis manufacturer.

GAWR: Gross Axle Weight Rating is the maximum permissible weight for an axle.

GVWR: Gross Vehicle Weight Rating is the maximum permissible weight of a fully loaded motorhome.

GCWR: Gross Combination Weight Rating is the value specified by the manufacturer of the vehicle as the maximum allowable loaded weight of this motorhome and any towed trailer or towed vehicle.

UVW: Unloaded Vehicle Weight is the weight of this motorhome as built at the factory with full fuel, engine oil and coolants. The UVW does not include cargo, fresh water, LP gas or dealer-installed accessories.

NCC: Net Carrying Capacity is the maximum weight of all occupants, including the driver, personal belongings, food, fresh water, waste water, LP gas, tools, tongue weight of towed vehicle, dealer-installed accessories, etc., that can be carried by the motorhome.



## WHAT'S IN A NAME?

When you buy a Newmar, you get more than an RV. You get the benefit of all we at Newmar believe in:

- Building products worthy of our customers' highest expectations for quality, durability and value
- Blending advanced manufacturing techniques with the time-tested practices of Amish craftsmanship
- Leading the industry with innovations that enhance RV living
- Offering responsive, effective customer service and support
- Being conscientious, loyal and fair in our business dealings
- Treating everyone according to the highest moral and ethical principles

This is what we value—and have valued from the day we opened shop in 1968. This is what the name Newmar has come to mean for so many. And this is what we'll hold on to for as long as we do business.



WHEN YOU KNOW THE DIFFERENCE™

**NEWMAR CORPORATION**  
355 N DELAWARE ST  
PO BOX 30  
NAPPANEE IN 46550-0030  
574-773-7791 FAX 574-773-2895

[www.newmarcorp.com](http://www.newmarcorp.com)

Your Official Newmar Dealer

Some features shown in our literature are optional. Colors and finishes are photographic representations. The actual materials may look different. Prices, specifications and floorplans are subject to change at Newmar's discretion, without prior notice or obligation. Please see your dealer for actual samples and specifications.

© 2006 Newmar Corporation. Printed in the U.S.A. (07/06)