



MOUNTAIN AIRE
2007 | GAS MOTORHOME

MOUNTAIN AIRE
2007 | GAS MOTORHOME





MOUNTAIN
AIRE
2007 | GAS MOTORHOME

YOUR MOUNTAIN AIRE KITCHEN

Amenities like these lend beauty and functionality: a wealth of rich-looking cabinets, an accommodating, easy-cleaning Corian® countertop with flush-mounted sink covers; an undermounted sink; a single-lever faucet with a spout; and built-in appliances, including an optional Norcold® four-door refrigerator with an icemaker and water dispenser. Also available: an optional stainless steel appliance package (not shown).



BREATHE DEEP. LIVE LARGE.

The 2007 Mountain Aire is a refreshing departure from run-of-the-mill motorhomes. Crisp, clean styling; generous accommodations; high-end appointments; an eye for detail and a knack for value—all mark this as a genuine Newmar.





TOTAL TRAVEL COMFORT
Mountain Aire's cockpit area features comfortable Flexsteel® seats; flush-mounted hardwood fascia; frameless halogen lighting for a brighter interior; and a home theater system with a 26-inch LCD TV, a single-disc DVD player and a surround-sound receiver.

BEDROOM VANITY
The ultimate in personal convenience, Mountain Aire's bedroom features a vanity area with an additional sink and a Corian® countertop. Notice the bathroom's elegant glass shower door.



YOUR VERY OWN CAFÉ

Dine fashionably at this round, freestanding, hardwood dinette table with two fixed chairs (and two folding chairs). The huge picture window creates a light, airy environment. Nearby is a dry bar with a wall-mounted LCD TV on a swing-out swivel bracket.



EASY-GLIDE DRAWERS
Residential-style, ball-bearing drawer guides allow smooth operation and full access to storage. Added convenience is provided by a standard, molded silverware divider tray.



SOFT, RESTFUL SLEEP
Your Mountain Aire bed features a tufted mattress and a quilted bedspread with a matching bed skirt, shams and accent pillows. Lifts on the bedtop allow access to storage underneath.



MOUNTAIN
AIRE
2007 | GAS MOTORHOME



NOW YOU KNOW YOU'RE GOING PLACES.

Wherever your travels take you, the Mountain Aire is built to go the distance year after year after year. Richer Full-Paint Masterpiece Finish™ exterior graphics announce your arrival with flair.

SIDEVIEW CAMERAS

While you're underway, Mountain Aire's optional sideview cameras let you safely view from the cab the area immediately surrounding either side of the coach.

EXTERIOR MIRRORS

While black mirror casings are a Mountain Aire standard, these optional chrome mirror casings are very popular. Also appreciated are the mirrors' standard remote control, defrost capability and built-in turn signals.





COMMAND CENTRAL

The Mountain Aire cockpit has everything you need to take command of the road. All controls and gauges—including a standard color LCD rearview monitor system—are placed within easy view and reach. A new option this year is an electronic compass that also displays exterior temperatures. Standard Flexsteel® leather/vinyl driver and passenger seats feature six-way power adjustment, power lumbar support and swivel capability.

STEP STORAGE

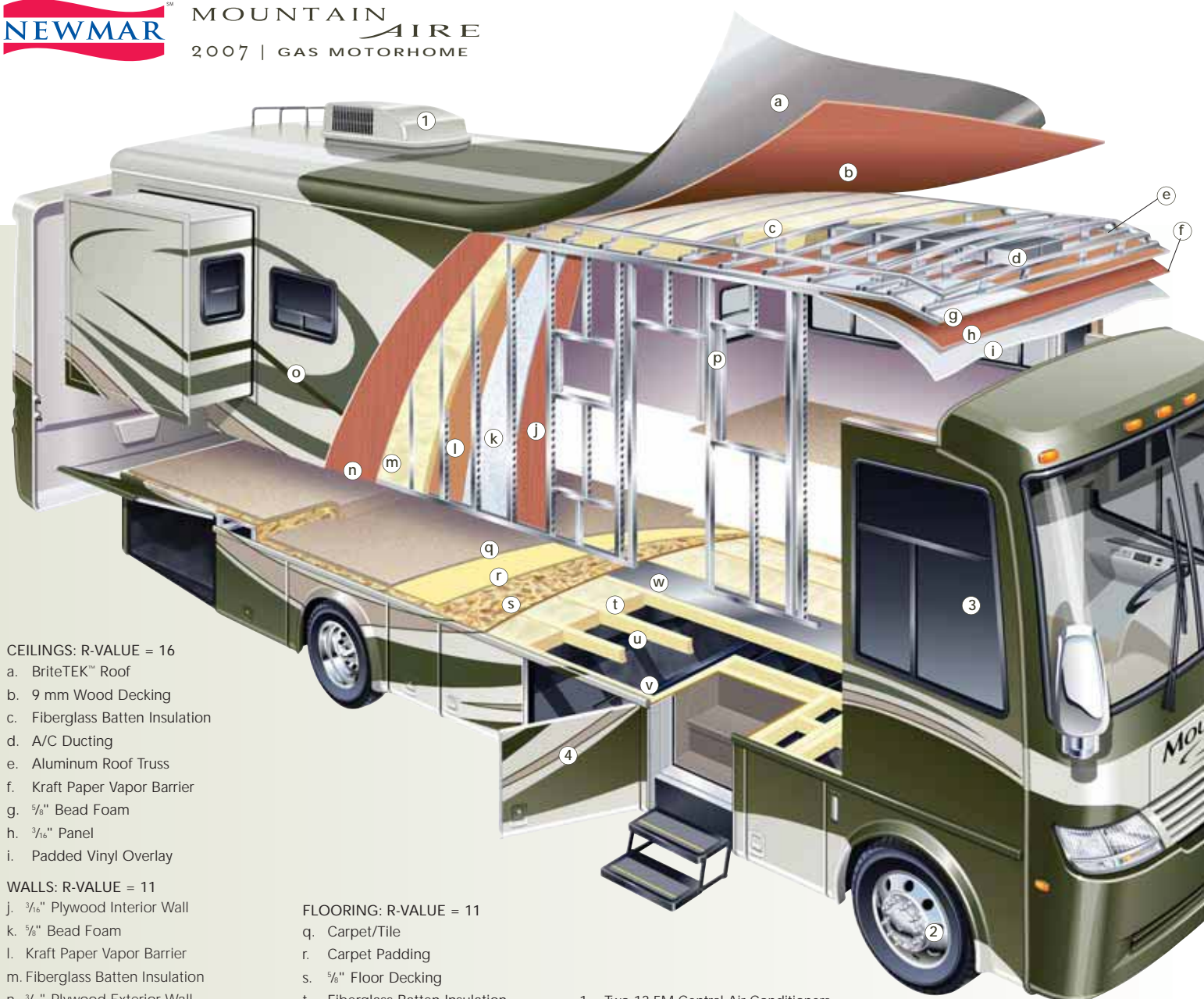
Keep shoes or any kind of small necessities handy in this compact storage compartment built right into the coach's top entrance step. Just lift the sturdy tread-covered lid for access.

SUPER STORAGE

Stow all your favorite travel gear—from either side of the coach—in this huge exterior pass-through compartment. Top-hinged doors and bright interior lighting make access easy.



MOUNTAIN
AIRE
2007 | GAS MOTORHOME



CEILINGS: R-VALUE = 16

- a. BriteTEK™ Roof
- b. 9 mm Wood Decking
- c. Fiberglass Batten Insulation
- d. A/C Ducting
- e. Aluminum Roof Truss
- f. Kraft Paper Vapor Barrier
- g. 5/8" Bead Foam
- h. 3/16" Panel
- i. Padded Vinyl Overlay

WALLS: R-VALUE = 11

- j. 3/16" Plywood Interior Wall
- k. 5/8" Bead Foam
- l. Kraft Paper Vapor Barrier
- m. Fiberglass Batten Insulation
- n. 3/16" Plywood Exterior Wall
- o. Composite One-piece Gelcoat Exterior Sidewall
- p. 16" On-center Aluminum Framing with 3 1/2" Header

FLOORING: R-VALUE = 11

- q. Carpet/Tile
- r. Carpet Padding
- s. 5/8" Floor Decking
- t. Fiberglass Batten Insulation
- u. 2" x 3" Wood Framing
- v. Polyethylene Moisture Barrier
- w. Aluminum Ducting

- 1. Two 13.5M Central Air Conditioners
- 2. Coated Aluminum Wheels
- 3. Double-pane Tinted Safety-glass Windows
- 4. Side-hinged Baggage Doors

16" ON-CENTER FRAMING

Just like a fine site-built residential home, your Newmar home is framed 16 inches on center, which allows the best placement of outlets, switches and other components.

SIKAFLEX®

Used throughout Newmar construction, Sikaflex® elastic adhesive is one of the strongest bonding agents on the market today. It also serves as a sealant against air and water. And it helps dampen both sound and vibration.

PROTECTED C-CHANNELS

To keep the electrical wiring that runs through holes in the aluminum-frame C-channels from chafing, each hole is ringed with a rubber grommet.

NEWMAR TOTAL COMFORT™ CENTRAL AIR CONDITIONING



Experience RV air conditioning just like that found in site-built homes. Newmar's Total Comfort Central Air Conditioning is actually two separate, fully ducted systems: one to distribute incoming cool air, the other to quickly and effectively remove warm air from every living area.

FULL-PAINT MASTERPIECE FINISH™

Newmar's Full-Paint Masterpiece Finish raises the exterior beauty and durability of our motorhomes to a whole new level. This model year, we're offering our richest-looking graphics ever—to lend even more character and class. As industry leaders in applying full body paint to motorhome coaches, we at Newmar are pleased to offer the Full-Paint Masterpiece Finish as a Mountain Aire Gas Motorhome standard.



WOOD FINISHES & INTERIORS

- | | | |
|---|---|--|
| a. Mesa Oak Hardwood Cabinetry, Standard | f. Moss Frost Color Scheme with flooring options: simulated ceramic (standard) and ceramic and simulated plank (matches cabinetry, shown above) | h. Sunlit Gold Color Scheme with flooring options: simulated ceramic (standard) and ceramic and simulated plank (matches cabinetry, shown above) |
| b. Coastal Cherry Hardwood Cabinetry | g. Regent Red Color Scheme with flooring options: simulated ceramic (standard) and ceramic and simulated plank (matches cabinetry, shown above) | i. Mesa Oak Simulated Plank |
| c. Light Maple Glazed Hardwood Cabinetry | | j. Coastal Cherry Simulated Plank |
| d. Velvet Cherry Hardwood Cabinetry | | k. Light Maple Simulated Plank |
| e. Black Illusion Color Scheme with flooring options: simulated ceramic (standard) and ceramic and simulated plank (matches cabinetry, shown above) | | l. Velvet Cherry Simulated Plank |

Some features shown in our literature are optional. Colors and finishes are photographic representations. The actual materials may look different. Prices, specifications and floorplans are subject to change at Newmar's discretion, without prior notice or obligation. Please see your dealer for actual samples and specifications.

DETAILS, DETAILS, DETAILS. Go ahead. Get close. Real close. You'll see that this motorhome's comfort and styling aren't superficial: They're built into the very weave of our fabrics, the very grain of our cabinets and every nook and cranny you might want to scrutinize. After all, it's details that make the Newmar difference.



BLACK ILLUSION



MOSS FROST



REGENT RED



SUNLIT GOLD

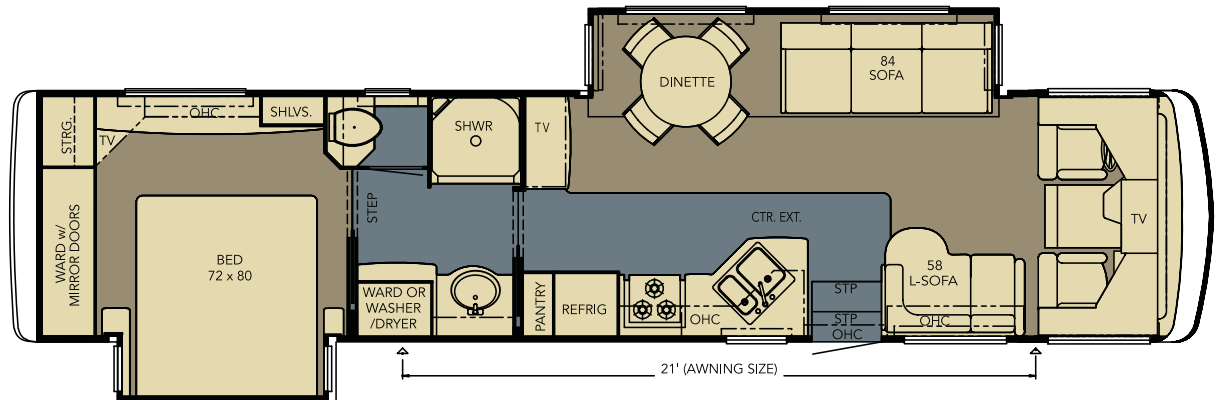


MACA 3978

Length: 39' 9"
Width: 101.5"

Options:

- K122
- K421
- K646
- K860
- K863

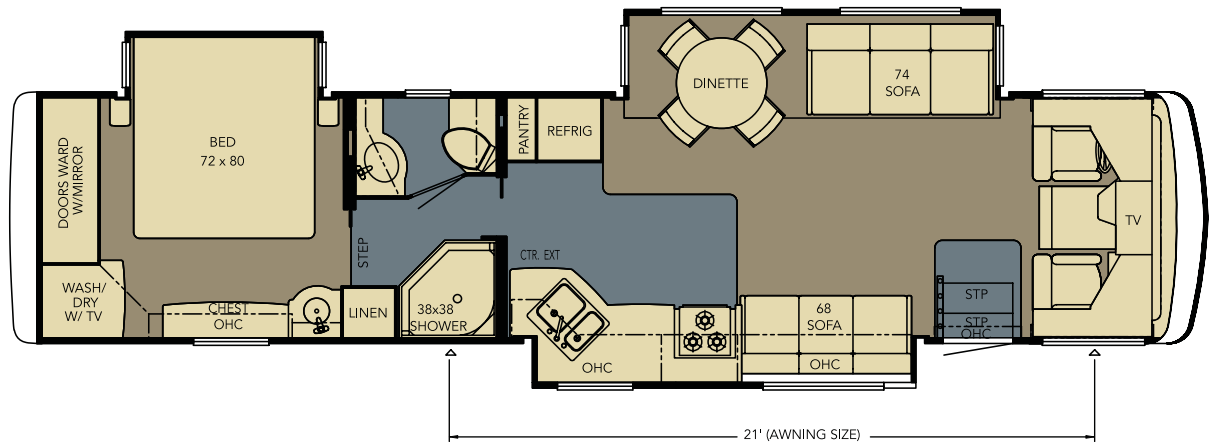


MACA 3990

Length: 39' 9"
Width: 101.5"

Options:

- K122
- K421
- K860_2
- K863_2

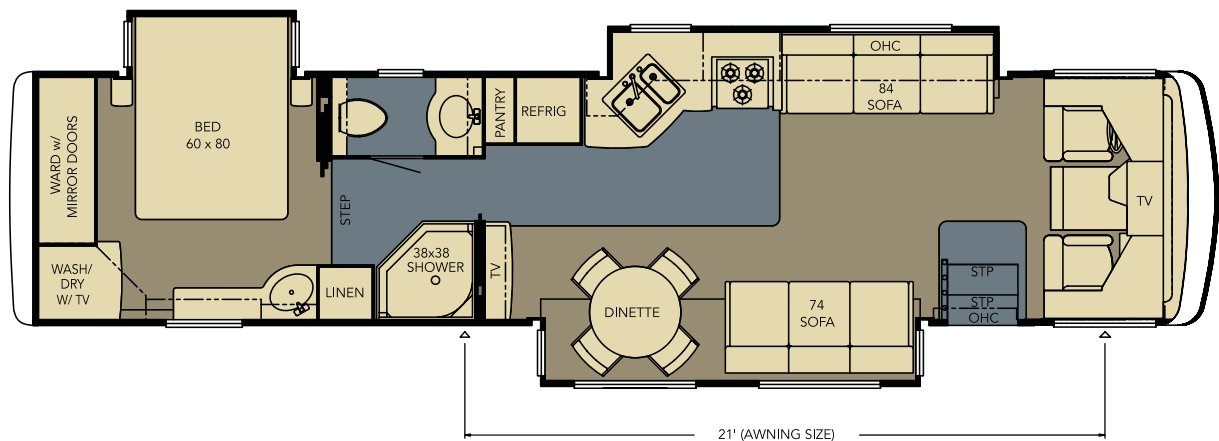


MACA 3991

Length: 39' 9"
Width: 101.5"

Options:

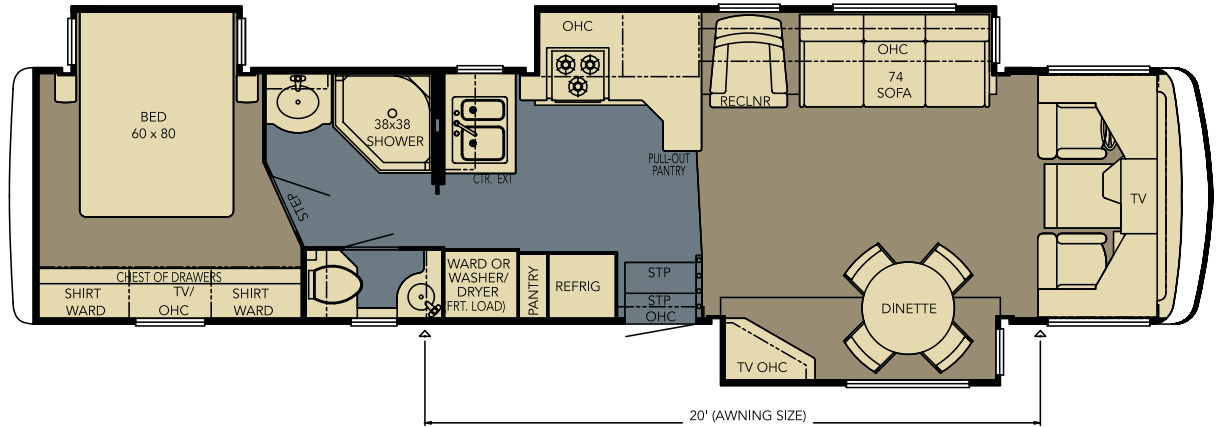
- K122_3
- K646



MACA 3992

Length: 39' 4"
Width: 101.5"

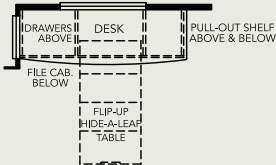
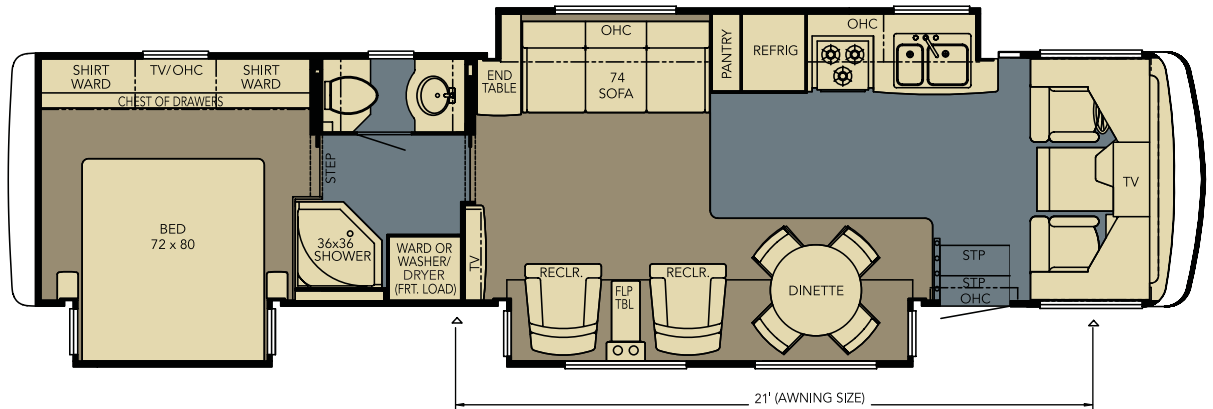
Options:
• K122_2



MACA 3994

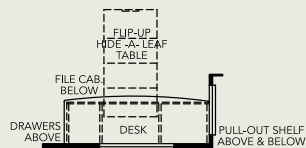
Length: 39' 6"
Width: 101.5"

Options:
• K122_2
• K421_2
• K785_2



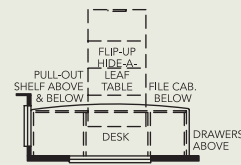
K122

Combination Desk
3978, 3990



K122_2

Combination Desk
3992, 3994



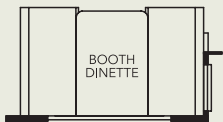
K122_3

Combination Desk
3991



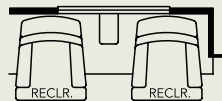
K421

Booth Dinette
3978, 3990



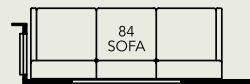
K421_2

Booth Dinette
3994



K646

Two Chairs (ILO Sofa)
3978, 3991



K785_2

84" Sofa
3994



K860

Entertainment Center
(ILO Standard TV and Furniture)
3978



K860_2

Entertainment Center with TV
(ILO Standard TV and Furniture)
3990



K863

Desk with TV
(ILO Standard TV and Furniture)
3978



K863_2

Desk with TV
(ILO Standard TV and Furniture)
3990



STANDARD FEATURES

CHASSIS FEATURES

- Workhorse™ W-25.5 Chassis
- Electric Leveling Jacks with Touch Control
- Cruise Control
- Tilt Steering Wheel
- Coated Aluminum Wheels

AIR CONDITIONING & HEATING

- Two 13.5M Penguin™ Central Air Conditioners
- Propane Furnace with In-floor Ducted Heat
- Dash Heater and High-output Air Conditioner
- Propane Leak Detector

APPLIANCES & ACCESSORIES

- Three-burner Recessed Range with Glass Oven Door and Electronic Ignition
- Corian® Range Cover
- Dometic® 8 cu. ft. Refrigerator
- Hardwood Raised Six-panel Refrigerator Front
- Spacemaker® Microwave Oven
- 10 gal. Gas/Electric Water Heater Direct-Spark Ignition with Engine Assist
- Sony® 26" LCD TV in Living Area (Two in 3991 & 3994)
- Sony® Flatscreen TV in Bedroom
- AM/FM Dash Radio with Cassette and CD Player
- Sony® Surround Sound System and AM/FM Radio, DVD Player and Subwoofer
- Rearview Color LCD Monitor System
- TV Antenna with Power Booster and Two Interior Jacks
- Satellite Prep
- Telephone Connection with Phone Jacks in Living and Dash Area
- Cable TV Connection with Rg6 Coax
- Two Bedroom Radio Speakers with On/Off Switch
- Roof-mounted Trumpet Horn
- "TV Antenna is Up" Warning Light on Dash
- 10 Bc Fire Extinguisher, Carbon Monoxide and Smoke Detectors

CABINETS & FURNITURE

- Oak Hardwood Cabinets with Raised-Panel Double Cathedral Doors
- Round Hardwood Dinette Table with Four Chairs (Two Fixed, Two Folding)
- Corian® Countertop in Kitchen with Undermounted Corian Sink and Flush Sink Covers
- Corian® Countertop in Bathroom with Undermounted Corian Bowl
- Residential-style Full-extension Ball-bearing Drawer Guides
- Knife Hinges on Cabinet Doors
- Kitchen Countertop Extension*
- Pullout Pantry*

- Flexsteel® Furniture
- Leather/Vinyl Driver/Passenger Seats with Six-way Power, Power Lumbar, Ergo-Flex Arms
- Cedar Paneling in Wardrobe with Carpeted Bottoms
- Lifts on Bedtop to Access Storage Area
- Tufted Mattress with Quilted Bedspread, Shams, Matching Bed Skirt and Accent Pillows

ELECTRICAL FEATURES

- 5.5 kW Onan® Marquis Generator with Remote Switch and Automatic Changeover
- 50 Amp Electrical Service with Flexible Cord
- Two 6 Volt House Batteries on Pullout Tray
- Battery Disconnect Switch
- 110 Volt Exterior Receptacle on Door Side
- 5 Watt Solar Panel
- 75 Amp Converter
- Daytime Headlight System
- Emergency Start Switch
- Exterior Security Lights, One on Each Side
- Fluorescent Lights Throughout
- Lighted Wardrobe
- Slideout Information Voice Module
- Manually Operated Hold-to-Run Slideout Switch
- Two 12 Volt Auxiliary Receptacles on Dashboard
- Interior Courtesy Lights
- Midship Side Turn Signals
- Energy Management System
- Exterior TV Jack
- ICC Light Switch
- Solar Prep

EXTERIOR FEATURES

- Full-Paint Masterpiece Finish™ with Diamond Shield Protective Film
- Super Storage Below Rear Bedroom Floor
- Convex Exterior Mirrors with Remote Control, Defrost and Turn Signals
- Automatic Entrance Door with Triple Step
- Side-hinged Baggage Doors (Below Slideout Rooms, Between Axles)
- Lighted Exterior Storage Compartments with Cargo Liner, Controlled by Interior Master Switch
- 6,000 lb. Towing Hitch with Two Extra 14 Gauge Wires
- Lighted Acrylic Assist Handle at Entrance Door
- Rear Ladder
- Rear Protective Full-width Tow Guard
- Squeegee Stored in Exterior Compartment
- Undercoating
- Mud Flaps

INTERIOR FEATURES

- Padded Vinyl Ceiling
- Lined Day/Night Pleated Window Shades and Lambrequins
- Mini-blinds in Kitchen and Bathroom Areas
- Hardwood Fascia on Living Area Slideout
- Simulated Ceramic Floor in Kitchen and Bathroom Areas
- Deluxe Carpeting with High-density Padding in Living Room and Bedroom
- Flat-panel Interior Passage Doors
- Interior Assist Handle at Main Entrance Door
- Shoe Storage Located in Entrance Step Compartment
- Wastebasket in Bathroom
- Sun Shades on Driver and Passenger Side Windows
- Power-Activated Sun Visors
- Wraparound Windshield Privacy Shade

PLUMBING & BATH FEATURES

- Demand Water System with Aquajet Pump
- Sewage Holding-tank Rinse
- Water Heater Bypass System
- SeaLand™ 500+ China Stool
- Towel Bar, Tissue Holder, Towel Ring and Robe Hook
- Towel Ladder on Hinged Bathroom Door
- Fiberglass Bathtub/Shower with Glass Shower Door
- Monitor Panel
- Monoplex Water Pump Switches Located in Bathroom and Exterior, Near Gate Valves
- Water Filter for Entire Unit
- Exterior Shower

WINDOWS, AWNINGS & VENTS

- Double-pane Tinted Safety-glass Windows
- Fan-Tastic® Vent with Rain Sensor in Kitchen Area
- Power Vent with Wall Switch in Bathroom
- Skylight in Bathroom
- Driver's Side Power Window
- A&E® 9000 Bedroom and Slideout Window Awnings
- A&E® Weather Pro Power Side Awning
- A&E® Slideout Awning Covers
- Cockpit Overhead Ventilation System

*CHECK WITH DEALERSHIP ON FLOORPLAN AVAILABILITY

OPTIONAL FEATURES

AIR CONDITIONING & HEATING

- Two 15M Penguin™ Heat Pump Central Air Conditioners
- Two 13.5M Penguin™ Heat Pump Central Air Conditioners
- Auxiliary Heater in Bedroom

APPLIANCES & ACCESSORIES

- 30" Convection Microwave Oven with Three-burner Cooktop and Piezo Ignition
- 30" Convection Microwave Oven with Dishwasher in Drawer Below Three-burner Cooktop
- Dometic® 10 cu. ft. Refrigerator
- Norcold® 12 cu. ft. Four-door Refrigerator with Icemaker and Water Dispenser
- Icemaker added to Refrigerator*
- Stainless Steel Appliances: Norcold Four-door Refrigerator with Icemaker and Water Dispenser; Convection or Spacemaker® Microwave; and Three-burner Range with Oven or Three-burner Cooktop
- One-piece Washer/Dryer*
- One-piece Washer/Dryer Prep*
- Two-piece Washer/Dryer*
- Electronic Compass with Exterior Temperature Displayed in Dash
- SIRIUS® Satellite Radio Capability (Does Not Include Monthly Subscription)

- 10-disc CD Player
- External Entertainment Center with AM/FM Radio, Cassette and CD Player
- Automatic Satellite Dish without Receiver
- In-motion Satellite Dish without Receiver
- Sideview Cameras
- CB Antenna
- CB Radio with Antenna

CABINETS & FURNITURE

- Coastal Cherry Hardwood Cabinets
- Velvet Cherry Hardwood Cabinets
- Light Maple Glazed Hardwood Cabinets
- Distressed Leather Free-standing Swivel Rocker Recliner*
- Distressed Leather Sofa*
- Distressed Leather Hide-a-Bed Sofa with Air Mattress*
- Hide-a-Bed Sofa with Air Mattress*
- Distressed Leather Driver/Passenger Seats
- Booth Dinette with Forward-facing Seatbelts
- Combination Desk/Dinette Table with Two Fixed and Two Folding Chairs
- Luxurious Pillowtop Mattress
- Overhead Cabinet Above Sofa and Dinette (This Cabinet is Included with the Power Lock Arm Option)

ELECTRICAL FEATURES

- 2000 Watt Inverter with Two Extra Batteries
- 600 Watt Inverter For Living Area or Bedroom TV
- 7.0 kW Onan® Generator
- Recessed Docking Lights
- Roof-mounted Spotlight
- 50 Amp Cord Reel

EXTERIOR FEATURES

- Large Chrome Exterior Mirrors

INTERIOR FEATURES

- Simulated Plank Floor in Kitchen and Bathroom Area
- Ceramic Floor Tile in Bathroom Area and Simulated Plank in Kitchen Area

PLUMBING & BATH FEATURES

- Assist Handle in Bathtub/Shower
- 110 Volt Heat Pads for Holding Tanks
- Fold-down Shower Seat
- Thetford® Aria Sculptured China Stool

CONSTRUCTION FEATURES

- One-piece Molded-fiberglass Roof with 9 mm Decking
- Power Lock Arms on All Slideout Rooms

WINDOWS, AWNINGS & VENTS

- Fan-Tastic® Vent with Rain Sensor in Bathroom

*CHECK WITH DEALERSHIP ON FLOORPLAN AVAILABILITY

FLOORPLAN SPECIFICATIONS

FLOORPLAN	APP. OVERALL LENGTH ¹	WIDTH	APP. OVERALL HEIGHT	INTERIOR WIDTH	INTERIOR HEIGHT	GREY	SEWAGE	WATER	PROPANE	FURNACE	WATER HEATER
MACA 3978	39' 9"	101.5"	12' 6"	95.5"	84"	60 gal.	40 gal.	75 gal.	25 gal.	42,000 Btu	10 gal.
MACA 3990	39' 9"	101.5"	12' 6"	95.5"	84"	60 gal.	40 gal.	75 gal.	25 gal.	42,000 Btu	10 gal.
MACA 3991	39' 9"	101.5"	12' 6"	95.5"	84"	60 gal.	40 gal.	75 gal.	25 gal.	42,000 Btu	10 gal.
MACA 3992	39' 4"	101.5"	12' 6"	95.5"	84"	60 gal.	40 gal.	75 gal.	25 gal.	42,000 Btu	10 gal.
MACA 3994	39' 6"	101.5"	12' 6"	95.5"	84"	60 gal.	40 gal.	75 gal.	25 gal.	42,000 Btu	10 gal.

WORKHORSE™ CHASSIS INFORMATION

FLOORPLAN	ENGINE HP	AXLE RATIO	FUEL CAP.	WHEELBASE	FRONT GAWR ²	REAR GAWR ²	GVWR ²	GCWR ²	APP. UVW	APP. NCC
MACA 3978	340	6.14	75 gal.	270"	9,000 lb.	16,500 lb.	25,500 lb.	30,000 lb.	21,555 lb.	3,945 lb.
MACA 3990	340	6.14	75 gal.	270"	9,000 lb.	16,500 lb.	25,500 lb.	30,000 lb.	21,305 lb.	4,195 lb.
MACA 3991	340	6.14	75 gal.	270"	9,000 lb.	16,500 lb.	25,500 lb.	30,000 lb.	21,415 lb.	4,085 lb.
MACA 3992	340	6.14	75 gal.	270"	9,000 lb.	16,500 lb.	25,500 lb.	30,000 lb.	21,436 lb.	4,064 lb.
MACA 3994	340	6.14	75 gal.	270"	9,000 lb.	16,500 lb.	25,500 lb.	30,000 lb.	21,562 lb.	3,938 lb.

¹ Lengths do not include the rear ladder.

² Specifications are supplied by chassis manufacturer.

GAWR: Gross Axle Weight Rating is the maximum permissible weight for an axle.

GVWR: Gross Vehicle Weight Rating is the maximum permissible weight of a fully loaded motorhome.

GCWR: Gross Combination Weight Rating is the value specified by the manufacturer of the vehicle as the maximum allowable loaded weight of this motorhome and any towed trailer or towed vehicle.

UVW: Unloaded Vehicle Weight is the weight of this motorhome as built at the factory with full fuel, engine oil and coolants. The UVW does not include cargo, fresh water, LP gas or dealer-installed accessories.

NCC: Net Carrying Capacity is the maximum weight of all occupants, including the driver, personal belongings, food, fresh water, waste water, LP gas, tools, tongue weight of towed vehicle, dealer-installed accessories, etc., that can be carried by the motorhome.



WHAT'S IN A NAME?

When you buy a Newmar, you get more than an RV. You get the benefit of all we at Newmar believe in:

- Building products worthy of our customers' highest expectations for quality, durability and value
- Blending advanced manufacturing techniques with the time-tested practices of Amish craftsmanship
- Leading the industry with innovations that enhance RV living
- Offering responsive, effective customer service and support
- Being conscientious, loyal and fair in our business dealings
- Treating everyone according to the highest moral and ethical principles

This is what we value—and have valued from the day we opened shop in 1968. This is what the name Newmar has come to mean for so many. And this is what we'll hold on to for as long as we do business.



WHEN YOU KNOW THE DIFFERENCE™

NEWMAR CORPORATION
355 N DELAWARE ST
PO BOX 30
NAPPANEE IN 46550-0030
574-773-7791 FAX 574-773-2895

www.newmarcorp.com

Your Official Newmar Dealer