

VENTANA
2007 || DIESEL MOTORHOME
NEWMAR



VENTANA
2007 || DIESEL MOTORHOME



INDULGE YOUR FREE-WHEELING SENSE OF DESIGN.

Okay, you respect tradition. But you're not above turning it on its head, especially where design is concerned. Ventana agrees. From its furniture to its trimwork, this inventive RV leaps boldly into the future with a style and flair you'll appreciate. Check out its exotic colors and patterns. Let your eye glide over its sweeping lines. Then, settle in and enjoy all its cozy comforts. Well, that's one thing about Ventana that respects tradition.

The other thing is, it's a Newmar, through and through. Solid. Dependable. Thoughtfully crafted. Value priced. And richly appointed with more standard features than any other motorhome in its class. So, please, indulge yourself.



NEW FINISHES, NEW STYLING

An example of our warmly inviting finishes for 2007 is shown to stunning effect on our optional raised-panel cabinet doors.

EASY-GLIDING CUTLERY DRAWER

Residential-style, full-extension ball-bearing guides let you open and close any drawer with exceptional ease. Added convenience is provided by a standard, molded, silverware divider tray.

NORCOLD® FOUR-DOOR REFRIGERATOR

With its integrated icemaker, this optional 12-cubic-foot Norcold four-door refrigerator brings true homestyle functionality to your kitchen.



LIVING LARGE

Spacious, wide-open floorplans, comfortable, durable Flexsteel® furniture and rich, warm cabinetry are all standard highlights of the Ventana coach—to make you feel right at home.



DREAM, DREAM, DREAM

Ventana bedrooms offer either king or queen beds with a quilted headboard and bedspread, a sham and accent pillows. The bed lifts up to reveal a large bed-base storage area.

FURTHER BEDROOM AMENITIES

Redesigned cabinetry accommodates a second satellite receiver, an overhead-mounted flatscreen TV and Ventana's optional washer/dryer combo.



ENHANCED CAB

Ventana's cab amenities for 2007 include a black-and-white monitor system, plush Ultra Leather seats and a new Sony® home theater system that includes a single-disc DVD player and a surround-sound receiver.



YOU'RE IN COMMAND. AND IT SHOWS.

Outside, Ventana's innovative front and rear end-cap designs harmonize beautifully with the richer, more detailed graphics of this year's new Full-Paint Masterpiece Finish.™ The total look is sure to turn heads and draw admiring glances. Inside, Ventana's dash configuration is sure to impress you: It's thoughtfully designed to put all controls and gauges well within sight and reach, giving you total command of the road.



EXTERIOR ENTERTAINMENT

A popular option, this enclosed entertainment system includes an LCD color TV mounted on a swing-out arm, an AM/FM stereo with a CD player and two speakers.



PASS-THROUGH STORAGE

Stow all your favorite travel gear—from either side of the coach—in this huge exterior pass-through compartment. Side-hinged swing-out doors give you easy access, as do the optional slideout trays.



EXTERIOR REARVIEW MIRRORS

While black mirror casings are a new Ventana standard, these optional chrome mirror casings remain very popular. Also appreciated are the mirrors' remote control, defrost capability and built-in turn signals.

NEW GRAPHICS

Ventana's standard Full-Paint Masterpiece Finish still offers its renowned road-defying protection—but this year, we've re-imagined the graphics to boost the excitement of its visual appeal.

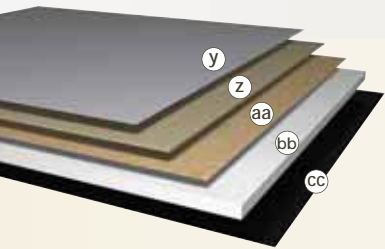


CEILINGS: R-VALUE = 16

- a. BriteTEK™ Roof
- b. 9 mm Wood Decking
- c. Fiberglass Batten Insulation
- d. A/C Ducting
- e. Aluminum Roof Truss
- f. Kraft Paper Vapor Barrier
- g. 5/8" Bead Foam
- h. 3/16" Panel
- i. Padded Vinyl Overlay

WALLS: R-VALUE = 11

- j. 3/16" Plywood Interior Wall
- k. 5/8" Bead Foam
- l. Kraft Paper Vapor Barrier
- m. Fiberglass Batten Insulation
- n. 3/16" Plywood Exterior Wall
- o. Composite One-piece Gelcoat Exterior Sidewall
- p. 16" On-center Aluminum Framing with 3 1/2" Header



BASEMENT: R-VALUE = 4

- y. Cargo Liner
- z. 3/8" Floor Decking
- aa. 3/16" Luan Panel
- bb. 1 1/2" Bead Foam
- cc. Aluminum Sheeting (Prevents Distortion)

FLOORING: R-VALUE = 16

- q. Carpet/Tile
- r. Carpet Padding
- s. 5/8" Floor Decking
- t. Fiberglass Batten Insulation
- u. 2" x 3" Wood Framing
- v. Polyethylene Moisture Barrier
- w. Foam Panels (Noise Reduction)
- x. Aluminum Ducting

1. 13.5M Penguin™ Heat Pump Central Air Conditioners (2)
2. Coated Aluminum Wheels
3. Double-pane Tinted Safety-glass Windows
4. Side-hinged Baggage Doors with Pullout Tray



NEWMAR TOTAL COMFORT™ CENTRAL AIR CONDITIONING

Experience RV air conditioning just like that found in site-built homes. Newmar's Total Comfort Central Air Conditioning is actually two separate, fully ducted systems: one to distribute incoming cool air, the other to quickly and effectively remove warm air from every living area.

PROTECTED C-CHANNELS

To keep the electrical wiring that runs through holes in the aluminum-frame C-channels from chafing, each hole is ringed with a rubber grommet.



SIKAFLEX®

Used throughout Newmar construction, Sikaflex® elastic adhesive is one of the strongest bonding agents on the market today. It also serves as a sealant against air and water. And it helps dampen both sound and vibration.

16" ON-CENTER FRAMING

Just like a fine site-built residential home, your Newmar home is framed 16 inches on center, which allows the best placement of outlets, switches and other components.



CACTUS GREEN



CHARCOAL



SALSA RED



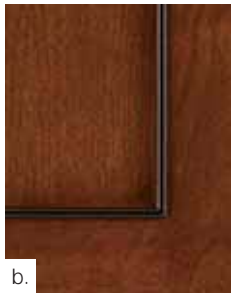
a.



d.



g.



b.



e.



h.



c.



f.



i.



WOOD FINISHES & INTERIORS

- a. Tucson Oak Cabinetry, Standard
- b. Ericsburg Cherry Cabinetry
- c. Maple Cream Cabinetry
- d. Oak Raised-panel Cabinetry
- e. Ericsburg Cherry Raised-panel Cabinetry
- f. Maple Cream Raised-panel Cabinetry
- g. Cactus Green Color Scheme with Simulated Marble Flooring
- h. Charcoal Color Scheme with Simulated Marble Flooring
- i. Salsa Red Color Scheme with Simulated Marble Flooring

Some features shown in our literature are optional. Colors and finishes are photographic representations. The actual materials may look different. Prices, specifications and floorplans are subject to change at Newmar's discretion, without prior notice or obligation. Please see your dealer for actual samples and specifications.

FULL-PAINT MASTERPIECE FINISH™

Newmar's Full-Paint Masterpiece Finish raises the exterior beauty and durability of our motorhomes to a whole new level. This model year, we're offering our richest-looking graphics ever—to lend even more character and class. As industry leaders in applying full body paint to motorhome coaches, we at Newmar are pleased to offer the Full-Paint Masterpiece Finish as a Ventana Diesel Motorhome standard.

DETAILS, DETAILS, DETAILS. Go ahead. Get close. Real close. You'll see that this motorhome's comfort and styling aren't superficial: They're built into the very weave of our fabrics, the very grain of our cabinets and every nook and cranny you might want to scrutinize. After all, it's details that make the Newmar difference.

FLOORPLANS & OPTIONS

■ Carpet ■ Simulated Marble Flooring



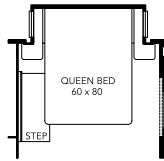
J584

58" Entertainment Center
3933



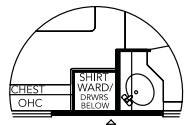
J584-2

53" Entertainment Center
3938, 3939



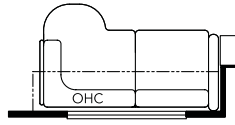
K050

Queen Bed (ILO King)
3614, 3933



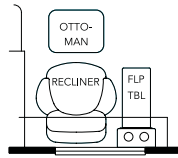
K079

Wardrobe (ILO Sink)
3935



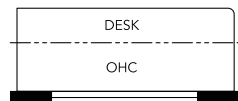
K203

72" L-lounge
3935, 3936



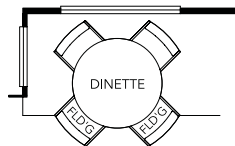
K205

Recliner (ILO Sofa)
3938



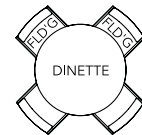
K326

53" Desk
3938, 3939



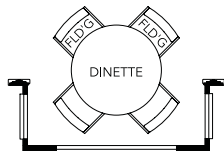
K540

Round Dinette
3330, 3613, 3933, 3935, 3936, 3938,
3939



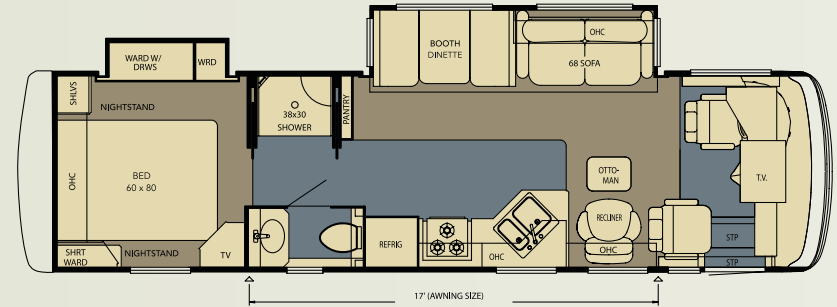
K540-2

Round Dinette
3331



K540-3

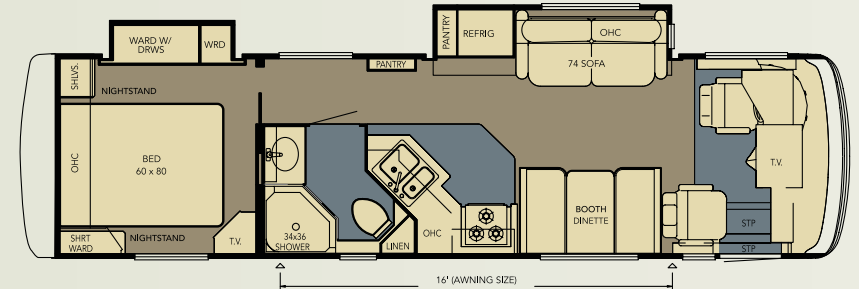
Round Dinette
3614



VTDP 3330

LENGTH: 33' 10"
WIDTH: 101.5"

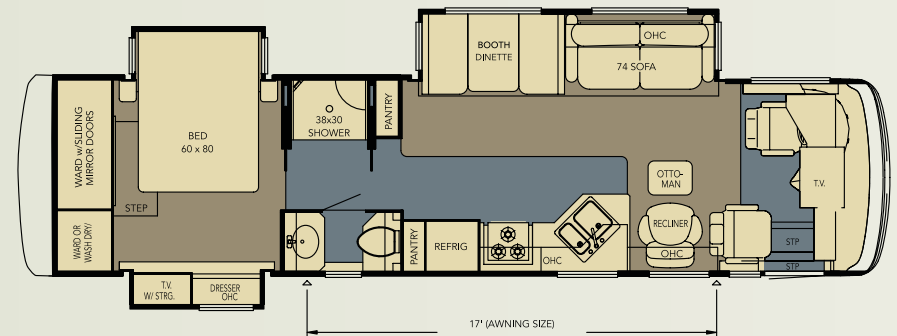
OPTIONS:
K540



VTDP 3331

LENGTH: 33' 10"
WIDTH: 101.5"

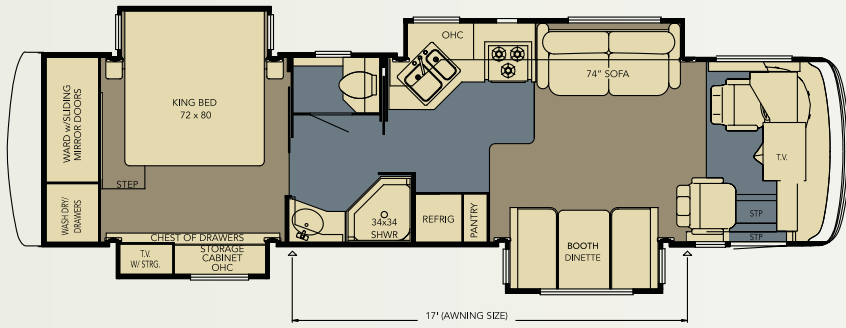
OPTIONS:
K540_2



VTDP 3613

LENGTH: 36' 6"
WIDTH: 101.5"

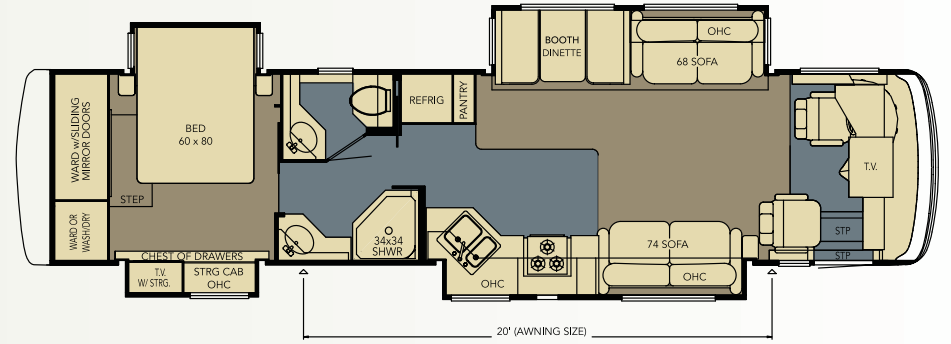
OPTIONS:
K540



VTDP 3614

LENGTH: 36' 6"
WIDTH: 101.5"

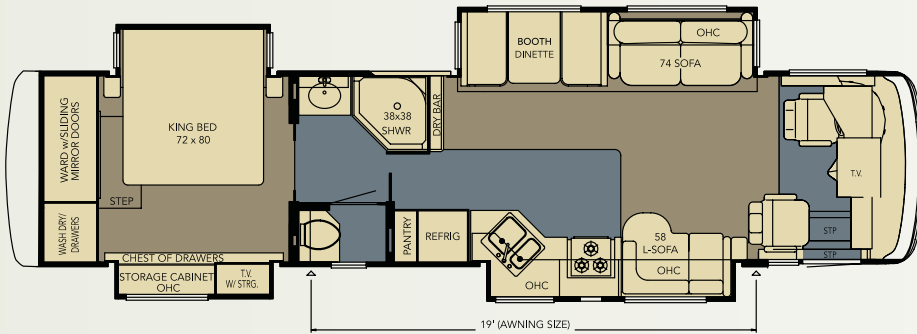
OPTIONS:
K050, K540_3



VTDP 3936

LENGTH: 39' 6"
WIDTH: 101.5"

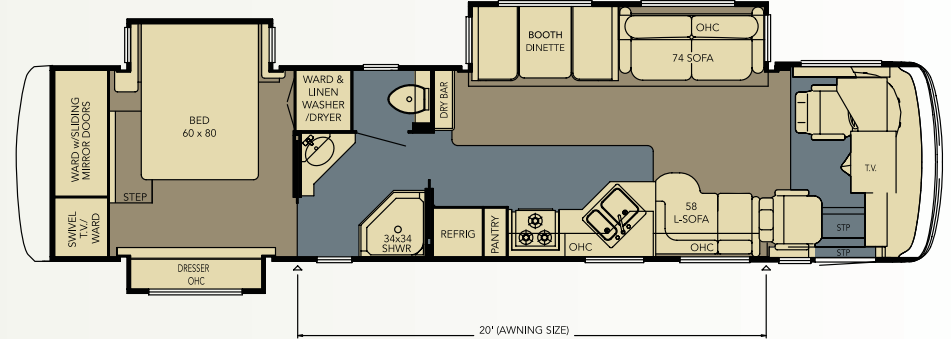
OPTIONS:
K203, K540



VTDP 3933

LENGTH: 39' 6"
WIDTH: 101.5"

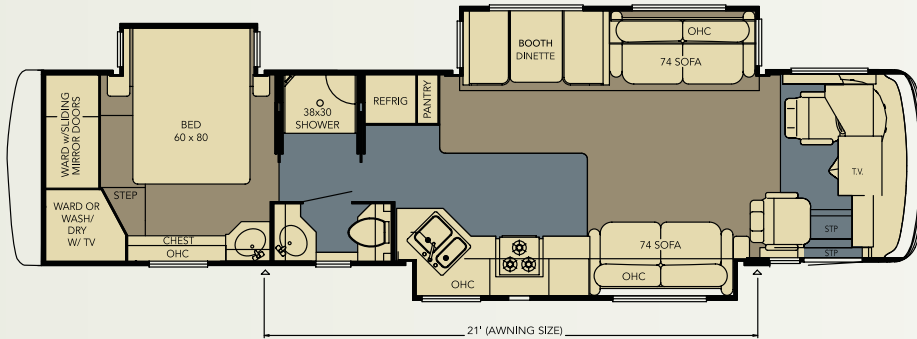
OPTIONS:
J584, K050, K540



VTDP 3938

LENGTH: 39' 6"
WIDTH: 101.5"

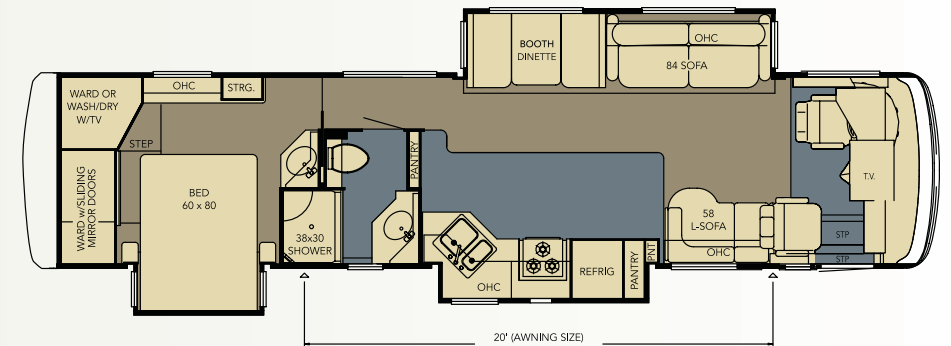
OPTIONS:
J584_2, K205, K326, K540



VTDP 3935

LENGTH: 39' 6"
WIDTH: 101.5"

OPTIONS:
K079, K203, K540



VTDP 3939

LENGTH: 39' 6"
WIDTH: 101.5"

OPTIONS:
J584_2, K326, K540

STANDARD FEATURES

CHASSIS FEATURES

- Spartan® Mountain Master Chassis
- Cummins® ISB 300 HP (33' Floorplans)
- Cummins® ISC 330 HP (36' & 39' Floorplans)
- Coated Aluminum Wheels
- Electric Leveling Jacks with Touch Control
- Cruise Control
- Tilt-and-Telescope Steering Wheel
- Recessed Fuel Fills with Crossover to Fill from Either Side
- Back-up Alarm
- Anti-lock Braking System

AIR CONDITIONING & HEATING

- Two 13.5M Penguin™ Heat Pump Central Air Conditioners
- Propane Furnace with In-floor Ducted Heat
- Dash Heater and High-output Air Conditioner
- Propane Leak Detector

APPLIANCES & ACCESSORIES

- 30" Convection Microwave Oven
- Three-burner Cooktop with Piezo Ignition
- Solid-surface Range Cover
- Norcold® 10 cu. ft. Refrigerator with Contemporary Doors
- 10 gal. Gas/Electric Water Heater with Direct-spark Ignition
- One-piece Compact Washer/Dryer Prep*
- Sony® Flatscreen TV in Living Area
- Flatscreen TV in Bedroom
- AM/FM Dash Radio with Cassette, CD Player

- Sony® Surround Sound Home Theater System with Single-disc DVD Player
- Rearview Monitor System
- Electronic Compass and Temperature Display in Dash
- TV Antenna with Power Booster and Two Interior Jacks
- Satellite Prep—Phone, TV Jack and Receptacle
- Cable TV Connection with RG 6 Coax
- Telephone Connection with Phone Jacks in Living and Dash Area
- Two Bedroom Radio Speakers with On/Off Switch
- Roof-mounted Air Horns
- 10 Bc Fire Extinguisher, Carbon Monoxide and Smoke Detectors

CABINETS & FURNITURE

- Oak Cabinets with Mission-style Doors and Black Inserted Trim
- Booth Dinette with Forward-facing Seatbelts
- Solid-surface Countertop in Kitchen with Undermounted Sink and Flush Sink Covers
- Solid-surface Countertop with Integrated Sink in Bathroom
- Adjustable Pullout Pantry Shelves*
- Residential-style Full-extension Ball-bearing Drawer Guides
- Flexsteel® Furniture
- Ultra Leather Cirrus Driver/Passenger Seats with Six-way Power, Power Lumbar, Ergo-Flex Arms
- Ultra Leather Cirrus Recliner with Ottoman or L-lounge*

- Molded Silverware Divider Tray
- Lifts on Bed Top to Access Storage Area
- Carpeted Wardrobe Bottoms with Pearl Cream Headliner on Shelves and Overhead Cabinets
- Tufted Mattress with Quilted Bedspread, Shams and Accent Pillows
- King Bed*

ELECTRICAL FEATURES

- 8.0 kW PowerTech Diesel Quiet Series Generator
- 50 Amp Electrical Service with Flexible Cord
- Four 6 Volt House Batteries on Pullout Tray
- Battery Disconnect Switch
- 110 Volt Exterior Receptacle on Door Side
- 5 Watt Solar Panel
- 2000 Watt Inverter
- Emergency Start Switch
- Exterior Security Light on Doorside
- Midship Side Turn Signals
- Fluorescent Lights Throughout
- Slideout Information Voice Module
- Manually Operated Hold-to-Run Slideout Switch
- ICC Light Switch
- 12 Volt Auxiliary Receptacles on Dashboard
- Exterior TV Jack on Door Side
- Interior Courtesy Lights

EXTERIOR FEATURES

- Full-Paint Masterpiece Finish™ with Diamond Shield Front Protective Film
- Convex Exterior Mirrors with Remote Control, Defrost and Turn Signals

- Automatic Entrance Door with Double Step
- Front Entry Door with Power Flush Stepwell Cover
- Side-hinged Baggage Doors (Except Door for Exterior Entertainment Center)
- Lighted Exterior Storage Compartments with Cargo Liner, Controlled by Interior Master Switch
- 10,000 lb. Towing Hitch with Two Extra 14 Gauge Wires
- Lighted Acrylic Assist Handle at Entrance Door
- Mud Flaps
- Rear Protective Full-width Tow Guard
- Rear Ladder
- Undercoating

INTERIOR FEATURES

- Padded Vinyl Ceiling
- Day/Night Pleated Window Shades and Lambrequins
- Mini-blinds in Kitchen and Bath Areas
- Simulated Marble Floor in Kitchen, Bathroom and Driver/Passenger Area
- Deluxe Carpeting with High-density Padding in Living Room and Bedroom
- Flat-panel Interior Passage Doors
- Interior Assist Handle at Main Entrance Door
- Sun Shades on Driver and Passenger Side Windows
- Wraparound Windshield Privacy Shade

PLUMBING & BATH FEATURES

- Demand Water System with SHURflo® Pump
- Sewage Holding-tank Rinse
- Water Heater Bypass System

OPTIONAL FEATURES

AIR CONDITIONING & HEATING

- Auxiliary Heater in Bedroom

APPLIANCES & ACCESSORIES

- Norcold® 12 cu. ft. Four-door Refrigerator with Icemaker
- Norcold® 12 cu. ft. Four-door Refrigerator
- Icemaker Added to Refrigerator*
- One-piece Washer/Dryer*
- Two-piece Washer/Dryer in Rear Wardrobe*
- SIRIUS® Satellite Radio Capability (Does not include monthly subscription)

- External Entertainment Center with 26" LCD TV, AM/FM Radio and CD Player
- Automatic Satellite without Receiver
- In-motion Satellite without Receiver
- Entertainment Center with Relocated Standard Living Area TV and Surround Sound System
- Sideview Cameras
- CB Radio with Antenna
- CB Antenna

CABINETS & FURNITURE

- Ericsburg Cherry Cabinets
- Maple Cream Cabinets
- Raised-panel Cabinet Doors
- Ultra Leather Cirrus Hide-a-Bed*
- Fabric Hide-a-Bed*
- Ultra Leather Cirrus L-lounge*
- Ultra Leather Cirrus Sofa*
- Ultra Leather Cirrus Chair and Ottoman*
- Round Hardwood Dinette Table with Four Fixed Chairs and Larger Dinette Window

- Desk with Fixed Chair
- Wardrobe in Place of Lavatory in Bedroom
- Queen Bed

ELECTRICAL FEATURES

- 7.5 kW Onan® Quiet Series Diesel Generator

EXTERIOR FEATURES

- Large Chrome Exterior Mirrors
- Large Storage Tray with Access from One Side or Either Side

- Thetford™ Aqua Magic Plus China Stool with Spray Attachment
- Two Towel Bars and Tissue Holder
- Fiberglass Bathtub/Shower with Glass Shower Door
- Straight Shower with Pocket Door (3935)
- Monitor Panel
- Water Pump Switches Located in Bathroom, Kitchen and Exterior Near Gate Valves
- Exterior Shower
- Water Filter with Drink Dispenser at Kitchen Sink

WINDOWS, AWNINGS & VENTS

- Double-pane Tinted Safety-glass Windows
- Fan-Tastic® Vent with Rain Sensor in Kitchen and Bathroom Areas
- Skylight in Bathroom
- A&E® 9000 Side Awning
- A&E® Oasis Manual Front Entrance Door Awning
- A&E® Slideout Awning Covers
- Cockpit Overhead Ventilation System

*CHECK WITH DEALERSHIP ON FLOORPLAN AVAILABILITY.

INTERIOR FEATURES

- Power-activated Sun Visors

PLUMBING & BATH FEATURES

- 110 Volt Heat Pads for Holding Tanks
- Water Filter for Entire Unit

WINDOWS, AWNINGS & VENTS

- A&E® 9000 Bedroom and Slideout Window Awnings
- A&E® Weather Pro Side Awning and Oasis Power Front Entrance Door Awning

*CHECK WITH DEALERSHIP ON FLOORPLAN AVAILABILITY.

FLOORPLAN SPECIFICATIONS

FLOORPLAN	APP. OVERALL LENGTH ¹	WIDTH	APP. OVERALL HEIGHT	INTERIOR WIDTH	INTERIOR HEIGHT	GREY	SEWAGE	WATER	PROPANE	FURNACE	WATER HEATER
VTDP 3330	33' 10"	101.5"	12' 5"	95.5"	84"	65 gal.	45 gal.	105 gal.	32 gal.	35,000 Btu	10 gal.
VTDP 3331	33' 10"	101.5"	12' 5"	95.5"	84"	65 gal.	45 gal.	105 gal.	32 gal.	35,000 Btu	10 gal.
VTDP 3613	36' 6"	101.5"	12' 5"	95.5"	84"	65 gal.	45 gal.	105 gal.	32 gal.	42,000 Btu	10 gal.
VTDP 3614	36' 6"	101.5"	12' 5"	95.5"	84"	65 gal.	45 gal.	105 gal.	32 gal.	42,000 Btu	10 gal.
VTDP 3933	39' 6"	101.5"	12' 5"	95.5"	84"	65 gal.	45 gal.	105 gal.	32 gal.	42,000 Btu	10 gal.
VTDP 3935	39' 6"	101.5"	12' 5"	95.5"	84"	65 gal.	45 gal.	105 gal.	32 gal.	42,000 Btu	10 gal.
VTDP 3936	39' 6"	101.5"	12' 5"	95.5"	84"	65 gal.	45 gal.	105 gal.	32 gal.	42,000 Btu	10 gal.
VTDP 3938	39' 6"	101.5"	12' 5"	95.5"	84"	65 gal.	45 gal.	105 gal.	32 gal.	42,000 Btu	10 gal.
VTDP 3939	39' 6"	101.5"	12' 5"	95.5"	84"	65 gal.	45 gal.	105 gal.	32 gal.	42,000 Btu	10 gal.

SPARTAN® CHASSIS INFORMATION

FLOORPLAN	ENGINE HP	AXLE RATIO	FUEL CAP.	WHEELBASE	FRONT GAWR ²	REAR GAWR ²	GVWR ²	GCWR ²	APP. UYW	APP. NCC
VTDP 3330	300	4.88	100 gal.	190"	10,500 lb.	17,500 lb.	28,000 lb.	38,000 lb.	22,200 lb.	5,800 lb.
VTDP 3331	300	4.88	100 gal.	190"	10,500 lb.	17,500 lb.	28,000 lb.	38,000 lb.	22,100 lb.	5,900 lb.
VTDP 3613	330	4.88	100 gal.	216"	12,000 lb.	17,500 lb.	29,500 lb.	39,500 lb.	23,900 lb.	5,600 lb.
VTDP 3614	330	4.88	100 gal.	216"	12,000 lb.	17,500 lb.	29,500 lb.	39,500 lb.	24,400 lb.	5,100 lb.
VTDP 3933	330	4.88	100 gal.	252"	12,000 lb.	19,000 lb.	31,000 lb.	41,000 lb.	25,500 lb.	5,500 lb.
VTDP 3935	330	4.88	100 gal.	252"	12,000 lb.	19,000 lb.	31,000 lb.	41,000 lb.	25,200 lb.	5,800 lb.
VTDP 3936	330	4.88	100 gal.	252"	12,000 lb.	19,000 lb.	31,000 lb.	41,000 lb.	25,500 lb.	5,500 lb.
VTDP 3938	330	4.88	100 gal.	252"	12,000 lb.	19,000 lb.	31,000 lb.	41,000 lb.	25,300 lb.	5,700 lb.
VTDP 3939	330	4.88	100 gal.	252"	12,000 lb.	19,000 lb.	31,000 lb.	41,000 lb.	25,000 lb.	6,000 lb.

SPARTAN® MOUNTAIN MASTER CHASSIS

The Spartan Mountain Master and Mountain Master GT don't just lead the way, they pave the way! Spartan's Mountain Master chassis is America's most popular, most reliable, highest-performing diesel pusher. Experience the power, the superior ride and handling and excellent driving performance in your coach built on a Spartan Mountain Master chassis. The Mountain Master chassis provides excellent resale value and carries a 36-month, 50,000-mile, no-deductible warranty, which includes roadside assistance for the entire warranty period. Sit back and enjoy the ride!



Lengths, heights, widths and dry weights are approximate. Weight will vary based on optional equipment added to the above base weight.

¹ Lengths do not include the rear ladder.

² Specifications are supplied by the chassis manufacturer.

GAWR: Gross Axle Weight Rating is the maximum permissible weight for an axle.

GCWR: Gross Combination Weight Rating is the value specified by the manufacturer of the vehicle as the maximum allowable loaded weight of this motorhome and any towed trailer or towed vehicle.

GVWR: Gross Vehicle Weight Rating is the maximum permissible weight of a fully loaded motorhome.

UYW: Unloaded Vehicle Weight is the weight of this motorhome as built at the factory with full fuel, engine oil and coolants. The UYW does not include cargo, fresh water, LP gas or dealer-installed accessories.

NCC: Net Carrying Capacity is the maximum weight of all occupants, including the driver, personal belongings, food, fresh water, waste water, LP gas, tools, tongue weight of towed vehicle, dealer-installed accessories, etc., that can be carried by the motorhome.

VENTANA
2007 || DIESEL MOTORHOME



WHAT'S IN A NAME?

When you buy a Newmar, you get more than an RV. You get the benefit of all we at Newmar believe in:

- Building products worthy of our customers' highest expectations for quality, durability and value
- Blending advanced manufacturing techniques with the time-tested practices of Amish craftsmanship
- Leading the industry with innovations that enhance RV living
- Offering responsive, effective customer service and support
- Being conscientious, loyal and fair in our business dealings
- Treating everyone according to the highest moral and ethical principles

This is what we value—and have valued from the day we opened shop in 1968. This is what the name Newmar has come to mean for so many. And this is what we'll hold on to for as long as we do business.



WHEN YOU KNOW THE DIFFERENCE™

NEWMAR CORPORATION
355 N DELAWARE ST
PO BOX 30
NAPPANEE IN 46550-0030
574-773-7791 FAX 574-773-2895

www.newmarcorp.com

Your Official Newmar Dealer