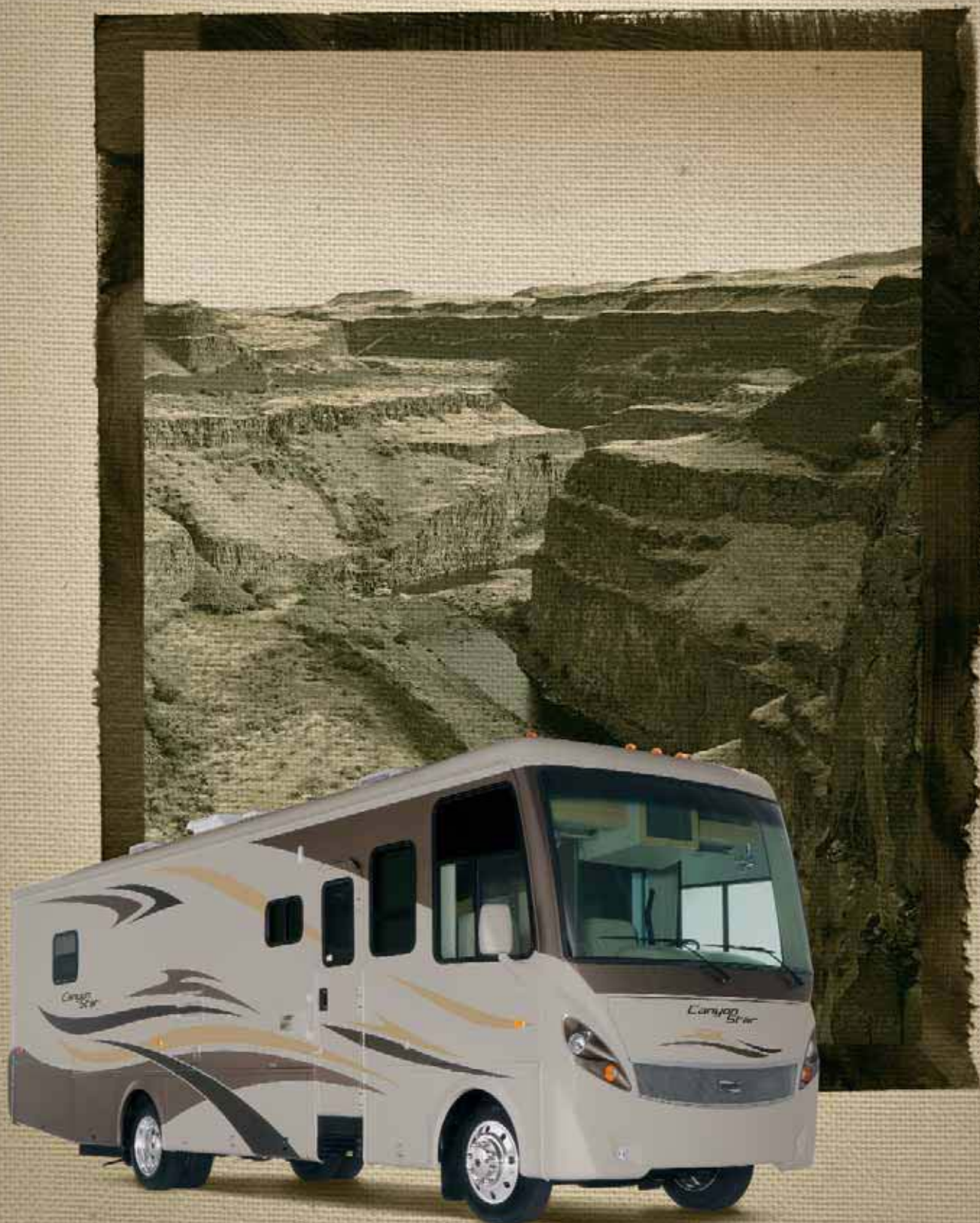


NEWMAR

*Canyon
Star*
2008 GAS MOTORHOME







The Next Stop on the Path to Comfort

You've lived life on the road before, but now you desire a little more luxury — without a price tag that means living with less. The 2008 Canyon Star is the perfect solution. It possesses the craftsmanship and style that make it a Newmar. A wealth of features that create a comfortable environment. And a family-friendly design that accommodates the entire group. All at an affordable price you can easily step up to.





Easy Living on the Open Road

Wherever the road takes you, the 2008 Canyon Star makes sure you're prepared for the journey. The comfortable and spacious living area offers relaxation and entertainment.



YOUR CANYON STAR KITCHEN

The Canyon Star's easy-to-clean, solid-surface countertops feature a flip-up extension that gives you extra working space when preparing meals.



CANYON STAR MICROWAVE

The standard Spacemaker® microwave oven makes cooking and reheating meals quick and simple.



DINE NOW, SLEEP LATER

The Canyon Star booth dinette provides a cozy area for eating meals and converts into extra sleeping accommodations when it's time for bed.



FRONT-ROW ENTERTAINMENT

In the overhead cabinet, a 27-inch flatscreen color TV offers entertainment options for those in the living area.



KITCHEN STORAGE

There's plenty of room to store perishables in the eight-cubic-foot Norcold® refrigerator, and the pullout pantry provides easy access to items stored in the cupboard.



Sleep More. Rest Easy.

When it's time to unwind, the Canyon Star offers plenty of sleeping options for everyone onboard. In addition to a queen bed in the bedroom and the convertible booth dinette, the Canyon Star also features a set of bunk beds*. They create additional sleeping accommodations—without sacrificing space.



BEDROOM AMENITIES

Generous cabinets include a wardrobe with mirrored doors to store your belongings. When you're not quite ready for sleep, the flatscreen color television in the bedroom is ready to entertain.



RELAX, SLEEP, DREAM

The queen bed with a sweeping fabric headboard and a tufted mattress decorated with a quilted bedspread, shams and accent pillow offers complete comfort for total relaxation.

*Bunk beds available on select floorplans.



BATHROOM AMENITIES

Thoughtful conveniences in the bathroom include laminate countertops and a well-lit vanity. The rain-glass shower door makes cleaning easy.



D river-Friendly Command Center

The Canyon Star's cockpit was designed with your comfort in mind, with Ultraleather driver and passenger seats and six-way power adjustment for the driver. And to be functional, it includes a black-and-white rearview monitor system with audio.



**Canyon
Star**

2008 GAS MOTORHOME



ONE-PIECE WINDSHIELD

In the front, the new Canyon Star badge is prominently displayed under the large, one-piece windshield, which provides an uninterrupted view of your surroundings.



SPACIOUS STORAGE

Stow all your favorite travel gear in this roomy exterior storage compartment, complete with interior lighting and a cargo liner.



NEWMAR CONSTRUCTION

The 2008 Canyon Star is eye-catching with its Full-Paint Masterpiece Finish™ and Diamond Shield Front Protective Film. 34'–36' models feature 22.5" tires, aluminum wheels and taller storage compartments.



CEILING: R-VALUE = 16

- a. BriteTEK™ Roof
- b. 9mm Wood Decking
- c. Fiberglass Batten Insulation
- d. A/C Ducting
- e. Aluminum Roof Truss
- f. Kraft Paper Vapor Barrier
- g. ¾" Bead Foam
- h. ¾" Panel
- i. Padded Vinyl Overlay

WALLS: R-VALUE = 11

- j. ¾" Plywood Interior Wall
- k. ¾" Bead Foam
- l. Kraft Paper Vapor Barrier
- m. Fiberglass Batten Insulation
- n. ¾" Plywood Exterior Wall
- o. Composite One-piece Gelcoat Exterior Sidewall
- p. 16" On-center Aluminum Framing with 3½" Header

FLOORING: R-VALUE = 11

- q. Carpet/Tile
- r. Carpet Padding
- s. ¾" Floor Decking
- t. Fiberglass Batten Insulation
- u. 2" x 3" Wood Framing
- v. Polyethylene Moisture Barrier
- w. Aluminum Ducting

- 1. 13.5M Central Air Conditioners (2)
- 2. One-piece Windshield
- 3. Stainless Steel Wheel Simulators (32'-33' Floorplans)
Aluminum Wheels (34'-36' Floorplans)
- 4. Tinted Safety-glass Windows
- 5. Top-hinged Baggage Doors

16" On-center Framing

Just like a fine site-built residential home, your Newmar home is framed 16 inches on center, which allows the best placement of outlets, switches and other components.

Sikaflex®

Used throughout Newmar construction, Sikaflex elastic adhesive is one of the strongest bonding agents on the market today. It also serves as a sealant against air and water. And it helps dampen both sound and vibration.

Protected C-channels

To keep the electrical wiring that runs through holes in the aluminum-frame C-channels from chafing, each hole is ringed with a rubber grommet.

Newmar Express Limited Warranty

Every Canyon Star Gas Motorhome is backed by Newmar's one-year limited warranty/unlimited miles. Ask your Newmar dealer for details.

Newmar Total Comfort™ Central Air Conditioning

Experience RV air conditioning just like that found in site-built homes. Newmar's Total Comfort Central Air Conditioning is actually two separate, fully ducted systems: one to distribute incoming cool air, the other to quickly and effectively remove warm air from every living area.

The Limited Five-Year Structural Warranty

If any part of your Newmar recreational vehicle superstructure (which is the steel/aluminum structure of the sidewall, roof or frame) fails to perform properly within five years, from the date of purchase, due to faulty workmanship or material supplied by Newmar, it will be repaired without charge for either parts or labor by Newmar. This structural warranty is available only to the original purchaser and is non-transferable.



The Newmar Touch

We craft every motorhome with a special attention to detail, no matter how small or large. From the feel of the fabric, to the smooth touch of the custom-built cabinets, to our selection of color options. Every little detail and finishing touch contributes to the overall style and comfort of each motorhome. Whether you look from afar or study them up close, you'll notice the Newmar difference.



WOOD FINISHES & INTERIORS

a. Mesa Beige Color Scheme with flooring options (left to right): vinyl flooring (standard), simulated marble and simulated plank (shown with matching cabinetry)

b. Myan Green Color Scheme with flooring options (left to right): vinyl flooring (standard), simulated marble and simulated plank (shown with matching cabinetry)

c. Sierra Red Color Scheme with flooring options (left to right): vinyl flooring (standard), simulated marble and simulated plank (shown with matching cabinetry)

d. Tucson Oak Cabinetry, Standard
e. Maple Cream Cabinetry, Optional
f. Fall Spice Cabinetry, Optional



MESA BEIGE

MYAN GREEN

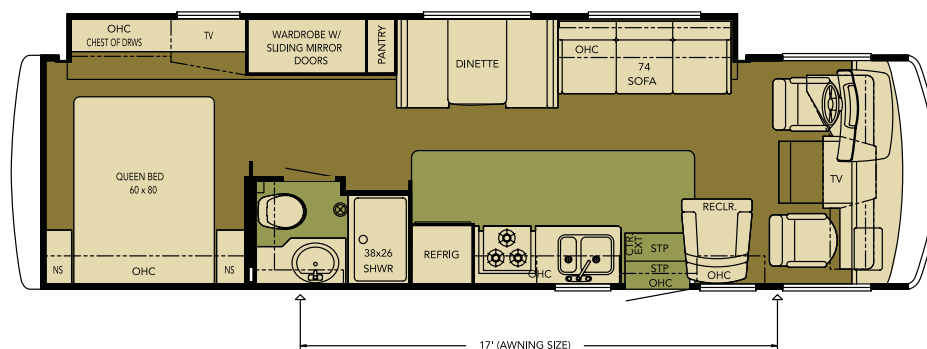
SIERRA RED

Some features shown in our literature are optional. Colors and finishes are photographic representations. The actual materials may look different. Prices, specifications and floorplans are subject to change at Newmar's discretion, without prior notice or obligation. Please see your dealer for actual samples and specifications.

Floorplans and Options

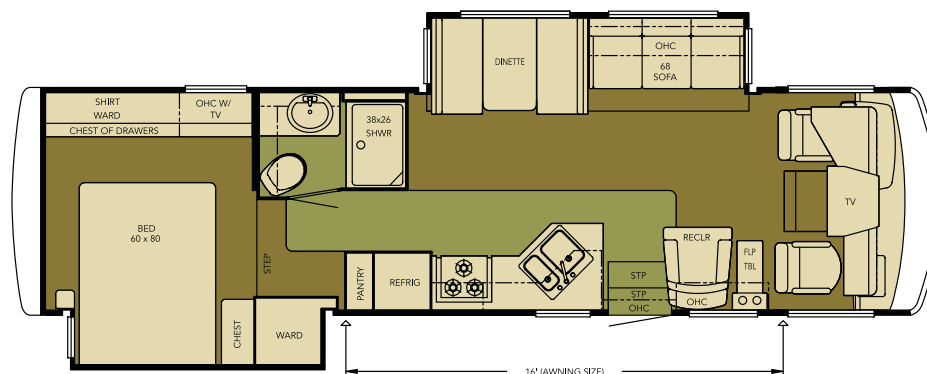
CSCA 3205

Length: 32' 11"
Width: 101.5"
Options: K779_5



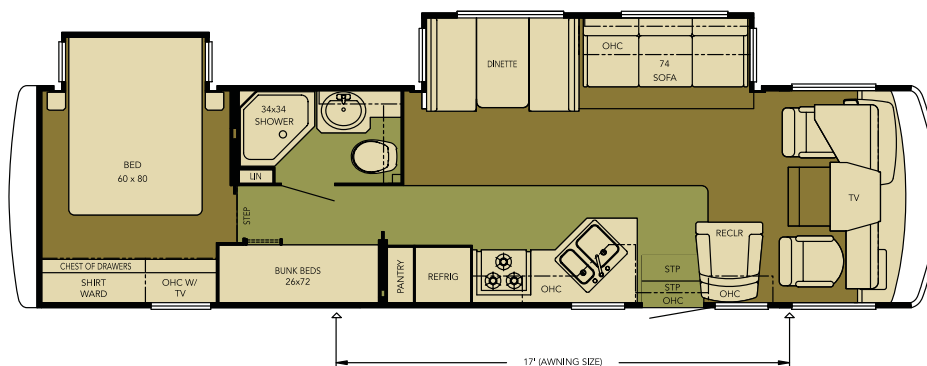
CSCA 3303

Length: 33' 11"
Width: 101.5"
Options: K546, K779



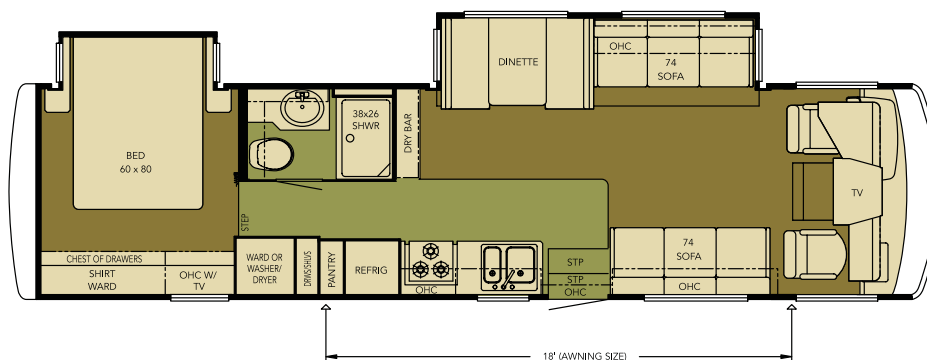
CSCA 3410

Length: 34' 11"
Width: 101.5"
Options: K040, K329, K546, K779



CSCA 3512

Length: 35' 11"
Width: 101.5"
Options: K546, K779, K865, K867

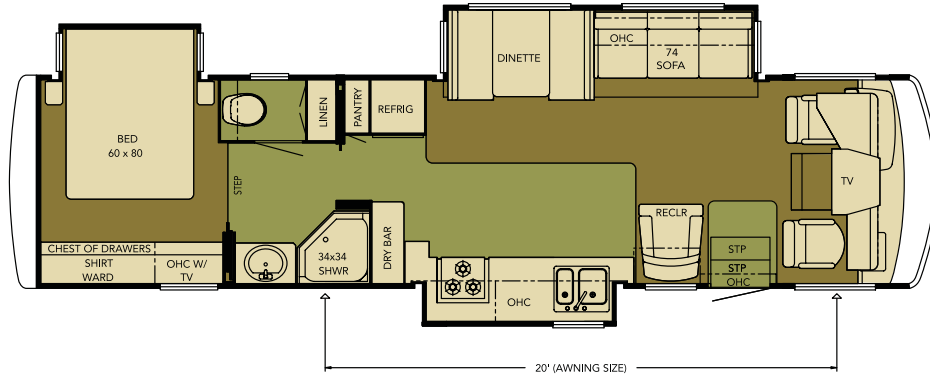


CSCA 3641

Length: 36' 3"

Width: 101.5"

Options: K546, K779

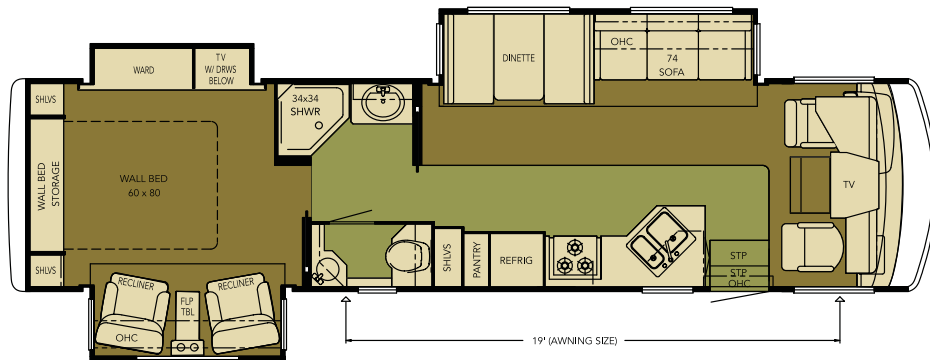


CSCA 3643

Length: 36' 8"

Width: 101.5"

Options: K546,
K779, K785

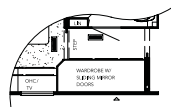
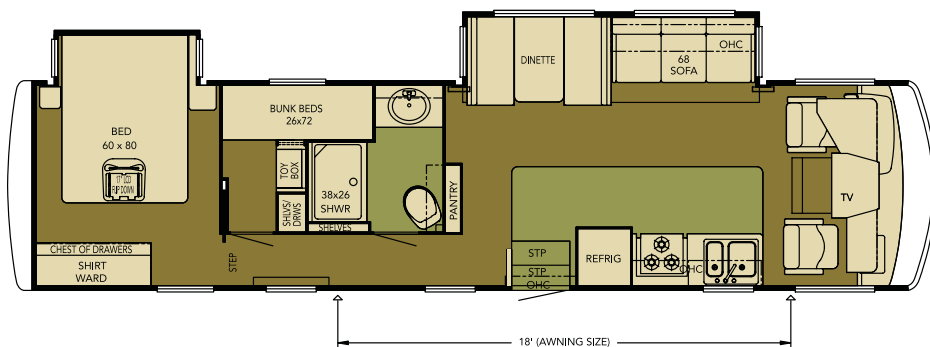


CSCA 3644

Length: 36' 11"

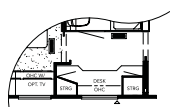
Width: 101.5"

Options: K546, K779



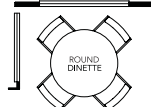
K040

Wardrobe with Sliding
Mirror Doors ILO Bunk
Bed
3410



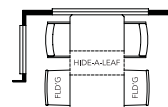
K329

Desk ILO Bunk Beds
3410



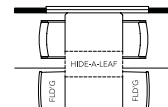
K546

Round Dinette
3303, 3410, 3512, 3641,
3643, 3644



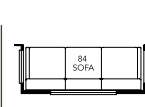
K779

Freestanding Dinette
with 4 Chairs
3303, 3410, 3512, 3641,
3643, 3644



K779_5

Freestanding Dinette
with 4 Chairs
3205



K785

Sofa ILO Chairs
3643



K865

Entertainment Center
with TV ILO Standard
TV & Sofa
3512



K867

Desk with TV ILO
Standard TV & Sofa
3512

Carpet

Vinyl Flooring

Standard Features

CHASSIS FEATURES

- Ford® F-53 20,500 lb. Chassis (32'–33' Floorplans)
- Ford F-53 22,000 lb. Chassis (34'–36' Floorplans)
- Electric Leveling Jacks with Automatic Control
- Cruise Control
- Tilt Steering Wheel
- Coated Aluminum Wheels (34'–36' Floorplans)
- Stainless Steel Wheel Simulators (32'–33' Floorplans)

AIR CONDITIONING & HEATING

- Two 13.5M Brisk® Central Air Conditioners
- Propane Furnace with In-floor Ducted Heat
- Dash Heater and Air Conditioner
- Propane Leak Detector

APPLIANCES & ACCESSORIES

- Three-burner Recessed Range with Glass Oven Door and Piezo Ignition
- Solid-surface Range Cover
- Norcold® 8 cu. ft. Refrigerator
- Black Plexiglass Panel Refrigerator Front
- Spacemaker® Microwave Oven
- 10 gal. Gas/Electric Water Heater with Direct-spark Ignition
- 27" Flatscreen TV in Living Area
- Flatscreen TV in Bedroom*
- 17" Flip-down LCD TV in Bedroom*
- AM/FM Dash Radio with MP3 Adapter and CD Player
- DVD/VCR Player
- Rearview Monitor System, Black and White with Audio
- TV Antenna with Power Booster and Two Interior Jacks
- Satellite Prep
- Telephone Connection with Phone Jacks in Living and Dash Area
- Cable TV Connection with Rg6 Coax
- 10 Bc Fire Extinguisher, Carbon Monoxide and Smoke Detectors

CABINETS & FURNITURE

- Oak Raised-panel Cabinet Doors on Overhead Cabinets
- Booth Dinette with Seat Belts
- Solid-surface Countertop in Kitchen with Undermounted Acrylic Sink and Flush Sink Covers
- Laminate Countertop in Bathroom with Porcelain Bowl (Acrylic Bowl in Some Floorplans)
- Residential-style Full-extension Ball-bearing Drawer Guides
- Kitchen Countertop Extension*
- Pull-out Pantry*
- Flexsteel® Furniture
- Ultraleather Driver/Passenger Seats with Six-way Power Driver Seat
- Fabric Swivel Recliner*
- Lifts on Bed Top to Access Storage Area*
- Tufted Mattress with Quilted Bedspread, Shams and Accent Pillows
- SICO® Fold-down Wall Bed*

ELECTRICAL FEATURES

- 5.5 kW Cummins Onan® Marquis Generator with Remote Switch and Automatic Changeover
- 50 Amp Electrical Service with Flexible Cord
- Two 12 Volt House Batteries on Pullout Tray
- Battery Disconnect Switch
- 110 Volt Exterior Receptacle
- 5 Watt Solar Panel
- 55 Amp Converter
- Daytime Headlight System
- Emergency Start Switch
- Fluorescent Ceiling Lights in Living Area
- Incandescent Lighting in Bath, Bedroom and Under Overhead Cabinets
- Lighted Wardrobe
- Manually Operated Hold-to-run Slideout Switch
- Energy Management System
- Exterior TV Jack
- ICC Light Flasher Switch
- Fog Lights

EXTERIOR FEATURES

- Full-painted Masterpiece™ Finish with Diamond Shield Front Protective Film
- One-piece Windshield
- Super-storage Below Rear Bedroom Floor*
- Convex Exterior Mirrors with Defrost and Remote Control
- Lighted Exterior Storage Compartments with Cargo Liner and Interior Master Switch
- 5,000 lb. Towing Hitch with Two Extra 14 Gauge Wires
- Acrylic Assist Handle at Entrance Door
- Undercoating
- Mud Flaps

INTERIOR FEATURES

- Padded Vinyl Ceiling
- Day/Night Pleated Window Shades and Lambrequins
- Mini Blinds in Kitchen and Bathroom
- Vinyl Floor in Kitchen and Bathroom
- Deluxe Carpeting with High-density Padding in Living Room and Bedroom
- Flat-panel Interior Passage Doors
- Interior Assist Handle at Main Entrance Door
- Shoe Storage Located in Entrance Step Compartment
- Wastebasket in Bathroom
- Dash Fans
- Wraparound Windshield Privacy Shade

PLUMBING & BATH FEATURES

- Demand Water System with SHURflo® Pump
- Sewage Holding-tank Rinse
- Water Heater Bypass System
- Thetford™ Aqua Magic Plus China Stool with Wood Seat and Spray Attachment
- Towel Bars and Tissue Holder
- Towel Ladder, on Hinged Bathroom Door Only
- Tub/Shower Surround with Shower Door
- Exterior Shower
- Water Filter for Entire Unit
- Water Pump Switch in Bathroom and Kitchen

WINDOWS, AWNINGS & VENTS

- Double-pane, Tinted Safety-glass Windows
- Fantastic® Vent in Kitchen and Bathroom Area
- Skylight in Bathroom*
- A&E® 9000 Side Awning
- Slideout Covers

Optional Features

CHASSIS FEATURES

- Workhorse™ W-22 Chassis (34'–36' Floorplans Except 3643)

AIR CONDITIONING & HEATING

- Two 13.5M Penguin™ Heat Pump Central Air Conditioners
- Auxiliary Heater in Bedroom

APPLIANCES & ACCESSORIES

- 30" Convection Microwave Oven with Three-burner Cooktop
- Norcold® 12 cu. ft. Four-door Refrigerator with Icemaker*
- Dometic® 12 cu. ft. Refrigerator with Icemaker*
- Sony® Surround Sound System with AM/FM Radio, DVD Player and Subwoofer
- SIRIUS® Satellite Radio Capability (Does not include monthly subscription)
- 10" Flip-down LCD TV and DVD Player with Headphones at Each Bunk*
- 10-disc CD Player
- Washer/Dryer Prep
- One-piece Washer/Dryer
- Convenience Package: Hair Dryer, Two-way Radios and Electric Broom
- Automatic Satellite Dish without Receiver
- Semi-automatic Satellite Dish without Receiver
- CB Antenna

CABINETS & FURNITURE

- Maple Cream Cabinets
- Fall Spice Cabinets
- Ultraleather Swivel Recliner*
- Hidden-leaf Dinette Table with Four Chairs (Two Fixed, Two Folding)*
- Round Dinette Table with Four Chairs (Two Fixed, Two Folding)*
- Desk with Flatscreen TV*
- Entertainment Center with Flatscreen TV*
- Sofa in Place of Bedroom Recliners*
- Ultraleather Sofa in Place of Bedroom Recliners*
- Ultraleather Sofa*
- Ultraleather Hide-a-Bed with Air Mattress*
- Two Ultraleather Bedroom Recliners*
- Desk in Place of Bunk Beds*
- Wardrobe in Place of Bunk Beds*
- Luxurious Pillowtop Mattress

ELECTRICAL FEATURES

- 600 Watt Inverter for Living Area or Bedroom TV
- Solar Prep

EXTERIOR FEATURES

- Rear Ladder

INTERIOR FEATURES

- Simulated Plank Flooring in Kitchen and Bathroom
- Simulated Marble Flooring in Kitchen and Bathroom

WINDOWS, AWNINGS & VENTS

- A&E® Weather Pro Side Awning
- Rear Window (Single Pane)
- Driver's Door with Power Window
- Bunk Windows*

* CHECK WITH DEALERSHIP
ON FLOORPLAN AVAILABILITY

Floorplan Specifications

FLOORPLAN	APP. OVERALL LENGTH ¹	WIDTH	APP. OVERALL HEIGHT	INTERIOR WIDTH	INTERIOR HEIGHT	GREY	SEWAGE	WATER	PROPANE	FURNACE	WATER HEATER
CSCA 3205	32' 11"	101.5"	12' 8"	95.5"	84"	60 gal.	40 gal.	75 gal.	25 gal.	34,000 Btu	10 gal.
CSCA 3303	33' 11"	101.5"	12' 8"	95.5"	84"	60 gal.	40 gal.	75 gal.	25 gal.	34,000 Btu	10 gal.
CSCA 3410	34' 11"	101.5"	12' 10"	95.5"	84"	60 gal.	40 gal.	75 gal.	25 gal.	40,000 Btu	10 gal.
CSCA 3512	35' 11"	101.5"	12' 10"	95.5"	84"	60 gal.	40 gal.	75 gal.	25 gal.	40,000 Btu	10 gal.
CSCA 3641	36' 03"	101.5"	12' 10"	95.5"	84"	60 gal.	40 gal.	75 gal.	25 gal.	40,000 Btu	10 gal.
CSCA 3643	36' 08"	101.5"	12' 10"	95.5"	84"	60 gal.	40 gal.	75 gal.	25 gal.	40,000 Btu	10 gal.
CSCA 3644	36' 11"	101.5"	12' 10"	95.5"	84"	60 gal.	40 gal.	75 gal.	25 gal.	40,000 Btu	10 gal.

Ford® Chassis Information

FLOORPLAN	ENGINE HP	AXLE RATIO	FUEL CAP.	WHEELBASE	FRONT GAWR ²	REAR GAWR ²	GVWR ²	GCWR ²	APP. UVW	APP. NCC
CSCA 3205	362	5.38	75 gal.	208"	7,500 lb.	13,500 lb.	20,500 lb.	26,000 lb.	17,360 lb.	3,140 lb.
CSCA 3303	362	5.38	75 gal.	208"	7,500 lb.	13,500 lb.	20,500 lb.	26,000 lb.	17,741 lb.	2,759 lb.
CSCA 3410	362	5.38	75 gal.	216"	7,500 lb.	14,500 lb.	22,000 lb.	26,000 lb.	18,231 lb.	3,769 lb.
CSCA 3512	362	5.38	75 gal.	228"	7,500 lb.	14,500 lb.	22,000 lb.	26,000 lb.	18,511 lb.	3,489 lb.
CSCA 3641	362	5.38	75 gal.	234"	7,500 lb.	14,500 lb.	22,000 lb.	26,000 lb.	19,094 lb.	2,906 lb.
CSCA 3643	362	5.38	75 gal.	246"	7,500 lb.	14,500 lb.	22,000 lb.	26,000 lb.	19,196 lb.	2,804 lb.
CSCA 3644	362	5.38	75 gal.	234"	7,500 lb.	14,500 lb.	22,000 lb.	26,000 lb.	18,740 lb.	3,260 lb.

Workhorse™ Chassis Information

FLOORPLAN	ENGINE HP	AXLE RATIO	FUEL CAP.	WHEELBASE	FRONT GAWR ²	REAR GAWR ²	GVWR ²	GCWR ²	APP. UVW	APP. NCC
CSCA 3410	340	5.86	75 gal.	216"	8,000 lb.	14,500 lb.	22,000 lb.	26,000 lb.	18,496 lb.	3,504 lb.
CSCA 3512	340	5.86	75 gal.	228"	8,000 lb.	14,500 lb.	22,000 lb.	26,000 lb.	18,718 lb.	3,282 lb.
CSCA 3641	340	5.86	75 gal.	234"	8,000 lb.	14,500 lb.	22,000 lb.	26,000 lb.	19,300 lb.	2,700 lb.
CSCA 3644	340	5.86	75 gal.	234"	8,000 lb.	14,500 lb.	22,000 lb.	26,000 lb.	18,946 lb.	3,054 lb.

¹ Lengths do not include the rear ladder.

² Specifications are supplied by chassis manufacturer.

GAWR: Gross Axle Weight Rating is the maximum permissible weight for an axle.

GVWR: Gross Vehicle Weight Rating is the maximum permissible weight of a fully loaded motorhome.

GCWR: Gross Combination Weight Rating is the value specified by the manufacturer of the vehicle as the maximum allowable loaded weight of this motorhome and any towed trailer or towed vehicle.

UVW: Unloaded Vehicle Weight is the weight of this motorhome as built at the factory with full fuel, engine oil and coolants. The UVW does not include cargo, fresh water, LP gas or dealer-installed accessories.

NCC: Net Carrying Capacity is the maximum weight of all occupants, including the driver, personal belongings, food, fresh water, waste water, LP gas, tools, tongue weight of towed vehicle, dealer-installed accessories, etc., that can be carried by the motorhome.





*Canyon
Star*

2008 GAS MOTORHOME

When You Know the Difference

At Newmar, we do more than just manufacture RVs. We enhance the RV lifestyle for our customers—in everything we do. From the luxury and details we proudly build into our products, to providing responsive customer service and support. From developing industry-leading innovations, to staying loyal and true in our everyday business practices. These are our values; this is the Newmar difference. As we celebrate 40 years of high-quality Amish craftsmanship, we look forward to many more years of building products that exceed your highest expectations and deliver the durability and quality that sets us apart from everyone else.



NEWMAR CORPORATION • 355 N DELAWARE ST • PO BOX 30 • NAPPANEE IN 46550-0030

574-773-7791 • FAX 574-773-2895 • www.newmarcorp.com

Some features shown in our literature are optional. Colors and finishes are photographic representations. The actual materials may look different. Prices, specifications and floorplans are subject to change at Newmar's discretion, without prior notice or obligation. Please see your dealer for actual samples and specifications. © 2007 Newmar Corporation. Printed in the U.S.A. (04/07)