



WHEN YOU KNOW THE DIFFERENCE™

LONDON AIRE

2008 LONDON AIRE

JUST SAY *I Do*

You've waited years for this moment to arrive. Presenting the 2008 London Aire—the pre-eminent coach of the Newmar line and the luxury coach world. With its commanding exterior and pampering amenities, London Aire is a sparkling symbol of your love for the finer things in life.





A RARE *Gem*

It's nearly impossible to take your eyes off the luxurious London Aire. Its spectacular living area will draw you in with rich fabrics, handcrafted hardwood and Villa™ furniture.

You'll want to announce to the world that it's yours. After all, a coach this exceptional deserves an admiring owner, someone who will take pleasure in showing off its state-of-the-art features—like the HD-ready entertainment center with a drop-down Sony® 40" LCD TV and Bose® 38 Sound System.

4541 floorplan with Vineyard Décor and Metropolitan Glazed Cherry Hardwood Cabinetry

SHAPED WITH CAREFUL *Precision*

Take note of London Aire's well-defined shapes. From the polished Alcoa Dura-Bright® aluminum wheels to the emerald-shaped, double-pane tinted windows, each feature is more captivating than the next. London Aire's exterior shape keeps its luster with the protection of Full-Paint Masterpiece™ Finish with Super Clear Coat and a Diamond Shield protective film.

Notice the brilliant features, including chrome mirrors with remote control, defrost and turn signal indicators. This coach is accommodating in every sense of the word. When you open the entrance door, London Aire rolls out its version of the red carpet—a set of automatic steps.





A *Conversation* STARTER

Everyone will gather around your new restaurant-inspired kitchen. Features typically optional in other coaches come *standard* in the London Aire, including an in-drawer dishwasher and a GE Profile™ Advantium™ microwave oven.

You'll get raves over your kitchen and dining areas' cabinetry and opulent décor. The handcrafted hardwood cabinets are both beautiful and spacious, and with pullout pantry shelves, you'll have abundant room for your kitchenware and culinary gadgets.





Unmatched STRENGTH

Get comfortable in your heated Ultraleather driver's seat and take the wheel. Impressive, isn't it? Each turn of the key sets the powerhouse 600-hp Cummins® engine into motion. You'll feel more confident knowing your coach was built on the rock-solid Spartan® K3 chassis with IFS.

Driving London Aire is exhilarating and carefree, thanks to exclusive Comfort Drive™ Steering. This cutting-edge technology makes turning, backing up and changing lanes nearly effortless. And unlike other coaches, there's little correction involved. Comfort Drive brings the steering wheel intuitively back to the center, helping you keep a fluid course.



FLAWLESS *Beauty*

Notice the intricate facets of your master bedroom suite. See how the stained glass, vaulted arches and quilted bedspread light up the room? This private space offers a refined backdrop for your daily routine.

Open your spacious cedar-lined closet and choose the perfect ensemble. There's even more storage under your king-size bed, where you can comfortably stow your accessories. Take a seat at your vanity for final touches and think to yourself: This is where you were meant to be.



STANDARD & OPTIONAL FEATURES

STANDARD FEATURES

CHASSIS FEATURES

- Spartan® K3 Chassis with IFS
- Cummins® ISX 600 hp
- Allison® 4000 MH Transmission
- Tag Axles
- Automatic Traction Control
- Power TRW Comfort Drive™ Steering
- Alcoa Dura-Bright® Non-Polished Aluminum Wheels
- Four-Point Hydraulic Leveling Jacks with Automatic Control and Extra Exterior Control Panel Chassis Air Leveling
- Power Tilt and Telescope with Burl Wood VIP SMART WHEEL
- Memory Settings for Driver's Seat, Pedals, Steering Wheel and Exterior Mirrors
- Cruise Control
- Recessed Fuel Fills with Crossover to Fill from Either Side
- Back-Up Alarm
- Anti-Lock Braking System
- Disc Brakes
- Electronic Chassis Information Display in Dash with Compass
- Chassis Service Center
- Leece-Neville 270-Amp Alternator
- 55 Degree Cramp Angle

AIR CONDITIONING & HEATING

- Three 15M Penguin™ Heat Pump Air Conditioners with Remote Control Thermostat
- Oasis Hydronic Zone Heating System with Continuous Hot Water
- Dash Heater and High-Output Air Conditioner
- Electric Heat in Floor

APPLIANCES & ACCESSORIES

- 30" GE Profile™ Advantium™ Microwave Oven with Award-Winning Speedcook Technology
- Two-Burner Recessed Electric Cooktop
- Polished Corian® Range Cover
- Residential Refrigerator with Auto Defrost, Icemaker and Refreshment Center in Door
- One-Piece Compact Washer/Dryer

- Whirlpool® Two-Piece Washer/Dryer
- Dishwasher in Drawer
- Freezer on Pullout Tray (112 quart)
- Sony® 26" LCD Color TV in Front Overhead
- Drop-down Sony® 40" LCD TV in Living Area
- Phillips® 30" LCD Mirror/Color TV/PC Monitor in Bedroom
- AM/FM/XM Dash Radio with Cassette and CD Player
- Remote Controlled Rearview Color Camera
- Navigation System with Touch-Screen Monitor
- TripTek™ Electronic Travel Information (Displayed on Rearview Monitor)
- Bose® 38 Sound System in Living Area
- Bose Wave® Radio with CD Player and Alarm Clock in Bedroom
- TV Antenna with Power Lift (One Exterior Jack and Two Interior Jacks)
- Telephone Connection with Phone Jacks in Living and Dash Areas
- Roof-Mounted Air Horns
- External Entertainment Center with Sony® 32" LCD Monitor and AM/FM CD Radio
- Safe
- Universal Remote Control
- HDTV-ready with Digital Switching System and Remote Control
- Eaton VORAD Anti-Collision Cruise Control System
- Security System with Camera
- Video Monitor Entry System with Doorbell
- In-Motion Satellite Dish with Receiver for Living and Bedroom Areas
- Wireless Cellular Internet
- 10 Bc Fire Extinguisher, and Carbon Monoxide and Smoke Detector

CABINETS & FURNITURE

- Natural Cherry Hardwood Unitized Cabinets with Residential Styling
- Dinette Table with Corian® Top and Four Chairs (Two Fixed, Two Folding)*
- Polished Corian® Countertop in Kitchen with Franke Gourmet Stainless Steel Sink and Flush Sink Covers
- Adjustable Pullout Pantry Shelves*

- Polished Corian® Countertop with Integrated Bowl in Bathroom
- Polished Corian® Countertop on Bedroom Nightstands
- Residential Style Full Extension Soft-Close/Self-Closing Drawer Guides
- Drawers with Dovetailed Sides and Maple Bottoms
- Concealed Hinges on Cabinet Doors
- Villa® Furniture
- Ultra-leather Heated Driver Seat with Eight-Way Power, Power Lumbar, Air Ride, Electric Headrest with Speakers, Climate Control, Ventilated Back and Power Adjusting Seat Cushion
- Ultra-leather Heated Massage Oversized Passenger Seat with Eight-Way Power, Power Lumbar, Electric Headrest and Power Footrest
- Lifts on Bed Top to Access Storage Area
- Cedar Paneling on Rear Wardrobe Wall and under Bed
- Storage Shelves Recessed into Rear Cap of Rear Wardrobe Floorplans
- Luxurious Pillowtop Mattress with Quilted Bedsprad, Reverse Shams, Matching Padded Bed Base and Accent Pillows
- King Bed with Hardwood, Raised-Panel Bed Base

ELECTRICAL FEATURES

- 20 kW PowerTech Diesel Quiet Generator, Auto Changeover with Remote Fan and Radiator
- 50-Amp Electrical Service with Flexible Cord on Power Cord Rewind Reel
- All-Electric Coach
- Four AGM 12-Volt 8D House Batteries (1,025 Amps) on Pullout Tray
- Battery Disconnect Switch
- 110-Volt Exterior Receptacle on Door Side
- 5-Watt Solar Panel
- 2800-Watt Sine-Wave Inverter
- Emergency Start Switch
- Automatic Generator Start
- Midship Side Turn Signals
- Recessed Docking Lights
- Switched Receptacle for Engine Block Heater
- Recessed Halogen Ceiling Lights Throughout
- Lighted Wardrobes with Automatic Switches
- Slideout Information Voice Module

- Manually Operated Hold-to-Run Slideout Switch
- ICC Light Switch
- Patio Light with PhotoCell Control
- Interior Courtesy Lights
- Mood Lights Recessed in Ceiling, Lambrequins and Kitchen Valance
- Two 12-Volt Auxiliary Receptacles on Dashboard
- Roof-Mounted Spotlight
- Multi-Plex Electrical Lighting System

EXTERIOR FEATURES

- Full-Paint Masterpiece Finish™ with Super Clear Coat and Diamond Shield Front Protective Film
- One-Piece Bonded Windshield
- Power Convex Exterior Chrome Mirrors with Remote Control, Defrost and Turn Signal Indicators
- Automatic Entrance Door with Double Step
- Mid-Entry Door with Automatic Lock Open Feature with Solid Surface Stepwell
- Lighted Exterior Storage Compartments with Sprayed-On Cargo Liner
- Vertical Lift Hugger Exterior Baggage Doors
- Power Locking Baggage Doors
- 15,000 lb. Towing Hitch with Two Extra 14-Gauge Wires
- Lighted Acrylic Assist Handle at Entrance Door
- Rear Protective Tow Guard with Stainless Steel Newmar Name Cutout
- Holding Tank Levels Displayed in Exterior Water Works Compartment
- Hydraulic Adjusting Lower Front Cap (In and Out) with Access to Generator
- Hydraulic Lift System for Rear Engine Door
- Dedicated Storage Area for Folding Lawn Chairs in Exterior Baggage Compartments
- Undercoating
- Mud Flaps

INTERIOR FEATURES

- Sculptured Padded Ceiling
- Power Drop-down Front Curtains
- Hardwood Window Lambrequins with Power-Activated Silhouette Window Shades
- Ornate Hardwood Fascia on Living Area Slideout

- Air-Powered Sliding Raised-Panel Interior Passage Doors
- Interior Assist Handle at Main Entrance Door
- Polished Porcelain Floor Tile in Kitchen, Bathroom and Living Areas with Custom Area Rug
- Power Driver- and Passenger-Side Sun Shades
- Power-Activated Driver and Passenger Sun Visors
- Designer Wallpaper Throughout
- Power Slideout Passenger Work Station in Dash

PLUMBING & BATH FEATURES

- Demand Water System with Aqualjet® Pump
- Wastewater Sewer Hose with Shut-Off Nozzle
- Sewage and Grey Holding-Tank Rinse with Electric Valves
- Thetford™ Aria Sculptured China Stool (Thetford™ Vacuum Flush Stool in Rear Bath)
- Towel Bar, Tissue Holder, Towel Ring and Robe Hook
- Exterior Convenience Wash Station—Hot/Cold Water, Soap and Towel Dispenser
- Jetted Shower System
- Solid Surface Shower Walls with Decorative Ceramic Inserts
- Monitor Panel in Interior and Exterior Water Compartments
- MANABLOC® Plumbing System
- Monoplex Water Pump Switches in Bathroom, Kitchen and Near Gate Valves
- Auto Water-Fill System
- Designer Faucets in Bathroom and Kitchen
- Water Softener
- Whole House Dual Water Filter
- Water Filter with Drink Dispenser at Kitchen Sink
- Power-Activated Rewind Water-Hose Reel

CONSTRUCTION FEATURES

- One-Piece Molded Fiberglass Roof with 9mm Decking
- Gelcoated Fiberglass Exterior Sides
- Seamless Gelcoated Fiberglass Front and Rear Caps
- Molded, Flush Exterior Slideout Rooms with Air Seals
- Aluminum-Frame Sidewalls and Roof Construction (16" on Center)

- 5/8" Foam Insulation Laminated in Sidewalls and Ceiling
- Power Lock Arms on All Slideout Rooms
- Roof R-Value Rating: 16
- Sidewall R-Value Rating: 11
- Floor R-Value Rating: 16
- Basement R-Value Rating: 4

WINDOWS, AWNINGS & VENTS

- Flush Mounted, Double-Pane Tinted Safety-Glass Windows
- Fan-Taatic® Vent with Rain Sensor in Kitchen Area and Bathroom
- Skylight in Bathroom
- Driver's Door with Power Window and Power Rotating Entrance Steps
- Passenger-side Power Window
- Girard® Power Window Awnings
- Integrated 4 Girard® Power Patio Awnings
- Keyless Entry
- Cockpit Overhead Ventilation System

OPTIONAL FEATURES

CABINETS & FURNITURE

- Pearl Glazed Camden Cherry Hardwood Cabinets
- Kaffe Glazed Cherry Hardwood Cabinets
- Metropolitan Glazed Cherry Hardwood Cabinets
- Parisian Glazed Maple Hardwood Cabinets
- Ranier Maple Hardwood Cabinets
- Leather/Vinyl U-dinette*
- Four-Poster Bed*

INTERIOR FEATURES

- Carpet in Living Area in Place of Ceramic Tile
- Flaxstone Granite Countertops, Floor Tile and Shower Walls

PLUMBING & BATH FEATURES

- Power-Activated Wastewater Sewer Hose with Shut-Off Nozzle

*Check with dealership on floorplan availability

CABINETS & FABRICS



Metropolitan Glazed
Cherry

Pearl Glazed
Camden Cherry

Kaffe Glazed
Cherry

Natural Cherry

Parisian Glazed
Maple

Ranier Maple



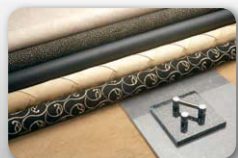
Botanical



Cream



Vineyard



Ebony Lustre



Mica



Timeless Blue

EXTERIOR PAINTS



Timeless Blue Option A



Cream Option A



Vineyard Option A



Timeless Blue Option B



Cream Option B



Vineyard Option B



Ebony Option A



Mica Option A



Botanical Option A



Ebony Option B



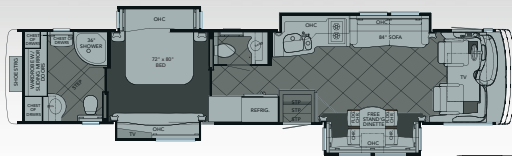
Mica Option B



Botanical Option B

FLOORPLANS

2008 London Aire Diesel Bus 4541



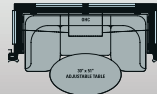
2008 London Aire Diesel Bus 4542



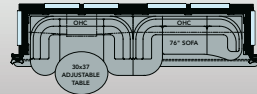
2008 London Aire Diesel Bus 4545



K425-Villa Dinette
LADB 4541, 4542



K426-Sofa/Dinette Combination
LADB 4545



SPECIFICATIONS

FLOORPLAN

FLOORPLAN	APP OVERALL LENGTH	WIDTH	APP OVERALL HEIGHT	INTERIOR WIDTH	INTERIOR HEIGHT	GREY	SEWAGE	WATER	FURNACE
2008LADB4541	45'	101.5"	13' 2"	95.25"	82"	94 gal.	68 gal.	160 gal.	65,000 Btu
2008LADB4542	45'	101.5"	13' 2"	95.25"	82"	94 gal.	68 gal.	160 gal.	65,000 Btu
2008LADB4545	45'	101.5"	13' 2"	95.25"	82"	94 gal.	68 gal.	160 gal.	65,000 Btu

SPARTAN® CHASSIS

FLOORPLAN	ENGINE HP	AXLE RATIO	FUEL CAP.	WHEEL-BASE	FRONT GAWR*	REAR GAWR*	TAG GAWR*	GVWR*	GCWR*	APP. UVW	APP. NCC
2008LADB4541	600	430-1	200 gal.	314"+TAG	20,000 lb.	20,000 lb.	14,000 lb.	54,000 lb.	69,000 lb.	47,500 lb.	6,500 lb.
2008LADB4542	600	430-1	200 gal.	314"+TAG	20,000 lb.	20,000 lb.	14,000 lb.	54,000 lb.	69,000 lb.	47,500 lb.	6,500 lb.
2008LADB4545	600	430-1	200 gal.	314"+TAG	20,000 lb.	20,000 lb.	14,000 lb.	54,000 lb.	69,000 lb.	48,000 lb.	6,000 lb.

Lengths, heights, widths and dry weights are approximate. Weight will vary based on optional equipment added to the above base weight.

GAWR: Gross Axle Weight Rating is the maximum permissible weight for an axle.

GVWR: Gross Vehicle Weight Rating is the maximum permissible weight for a fully loaded motor coach.

GCWR: Gross Combination Weight Rating is the value specified by the manufacturer of the vehicle as the maximum allowable loaded weight of this motor coach and any towed trailer or towed vehicle.

UVW: Unloaded Vehicle Weight is the weight of this motor coach as built at the factory with full fuel, engine oil and coolants. The UVW does not include cargo, fresh water, LP gas or dealer-installed accessories.

NCC: Net Carrying Capacity is the maximum weight of all occupants, including the driver, personal belongings, food, fresh water, waste water, LP gas, tools, tongue weight of towed vehicle, dealer-installed accessories, etc., that can be carried by the motor coach.

*Specifications supplied by the chassis manufacturer.

SPARTAN® K3 CHASSIS

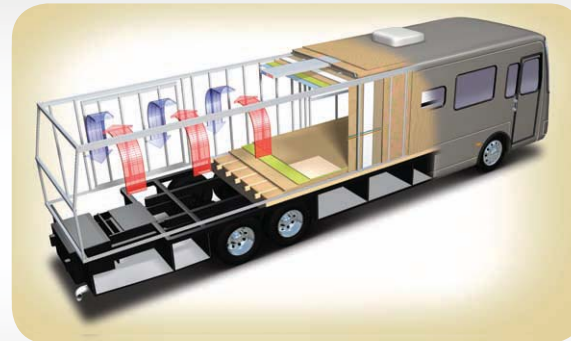


When they built the K3, Spartan's engineering team threw conventional design out the window to create the strongest chassis ever built. The web of tubular truss frames and sub-structure support beams create a solid, stable foundation with extensive pass-through storage. The K3 offers a GVWR of 50,600 lbs. to 54,000 lbs., with a 14,000 lb. tag axle. The high GVWR

and sound structural design allow OEMs to expand the coach beyond the chassis footprint, adding additional living space to the motor coach's interior. When you drive your coach built on a Spartan K3 chassis, you can be confident that you have the most powerful, highest performing coach on the road.

CONSTRUCTION

London Aire is a showcase for Newmar's exacting standards, meticulous detailing and legendary craftsmanship. The sturdy coach boasts a one-piece molded fiberglass roof and 16' on-center framing like that of a fine, site-built home.



NEWMAR CENTRAL AIR CONDITIONING
Newmar's exceptional Total Comfort central air conditioning is standard on every London Aire. The system consists of two separate fully ducted systems—one to distribute incoming cool air, the other to quickly and effectively remove warm air from your living area.



NEWMAR EXPRESS LIMITED WARRANTY™
Every London Aire Diesel Bus is backed by Newmar's two-year limited warranty/unlimited miles. Ask your Newmar dealer for details.

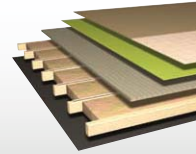
Roof R-Value = 16
One-Piece Molded Fiberglass Roof
9mm Wood Decking
Aluminum Rafter Framing
Fiberglass Batten Insulation
Sikaflex
A/C Ducting
Aluminum Stringer Framing
Kraft Paper Vapor Barrier
5/8" Bead Foam
3/16" Panel
Padded Vinyl Overlay



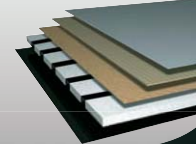
Sidewall R-Value = 11
Composite One-Piece Gelcoat
Exterior Sidewall
3/16" Plywood Exterior Wall
Fiberglass Batten Insulation
Sikaflex
5/8" Bead Foam
3/16" Plywood Interior Wall
Kraft Paper Vapor Barrier
Aluminum Framing with
3 1/2" Header Above



Floor R-Value = 16
Carpet/Tile
Carpet Padding
5/8" Floor Decking
2"x 3" Wood Framing
Fiberglass Batten Insulation
Polyethylene Moisture Barrier



Basement R-Value = 4
Cargo Liner
3/8" Floor Decking
3/16" Luan Panel
1 1/2" Bead Foam
Aluminum Sheeting with
Steel Support Rails to
Prevent Bowing and Flexing





SEE MORE OF LONDON AIRE'S SPARKLING FEATURES AT
www.newmarcorp.com/londonaire

OR VISIT YOUR LOCAL NEWMAR DEALER:



NEWMAR

(Please affix dealer stamp in this area.)



NEWMAR CORPORATION • 355 N DELAWARE ST • PO BOX 30 • NAPPANEE IN 46550-0030
574-773-7791 Fax 574-773-2895 • www.newmarcorp.com/londonaire

