

**X-AIRE**

2008 Toy Hauler

**NEWMAR**

No Time  
to Waste



We know your type. You have places to go, adventures to find and no time to waste. You want something that caters to your explorations, while providing you with comfort when the toys are put away for the day. From eating to sleeping, sharing stories to turning in for the night, this is the toy hauler for you. So take a good look. We dare you.

We've packed this toy hauler full of our 40 years experience of building top-quality RVs. We know what it takes and now we're hitting your territory with a patent-pending rear-cap design, 12-foot cargo space, fueling station, and top-of-the-line electronics and appliances (all of which come standard). But beyond all that muscle, we've also crammed this fifth wheel full of lush fabrics, carefully selected décors and comfortable resting places. Day or night, active or restful, this is the place for you.



Take a Good Look.  
We Dare  
You.



38CKTH shown with Galaxy décor and Platinum Gray cabinets.



When it's time to turn in, there's plenty of sleeping space for the entire crew – accommodations for up to 12 on some floorplans! If the bedroom suite is your private retreat, stretch out on the queen-size mattress. Curl up for the night under the quilted bedspread that pleasantly complements the headboard, window coverings and sidewall vinyl.

The bedroom has plenty of places to stow your travel essentials with a SuperStorage™ wardrobe, dresser and under-bed storage. For added safety, store your valuables in the floor safe that is part of the optional convenience package.

After a long day of adventures, rejuvenate under the flowing streams of the X-Aire shower. Take your time and enjoy the spacious, lighted and easy-to-clean shower enclosure with attractive privacy rain glass.





# Time to Kick Back

The living space of the X-Aire is designed with your comfort in mind. It's a place that welcomes you after a long day and soothes you as you relive the day's adventures. So when the toys are put away and the dust is brushed off your boots, step inside for relaxation and camaraderie.



The kitchen comes ready for you to serve up simple breakfasts or five-course dinners, and everything in between. The refrigerator, 3-burner cooktop, oven and microwave make mealtime so easy you'll forget you're on the road. Store all your provisions in the dinette's under-seat storage and abundant cabinets. Extra-deep drawers glide effortlessly on metal guides, while the fully adjustable pantry features deep shelves for even more storage.

After a long day of playing, relax into the hide-a-bed sofa or enjoy a game of cards around the dinette booth. Sit back in front of the 26-inch LCD television with Surround Sound System and DVD player. To meet your needs, easily adjust the position and angle of the television with the pullout swivel tray. Listen to your favorite tunes on the AM/FM stereo and CD player as you take a few moments to stretch out and recharge in the loft area.

*40CKSH shown with Steel Blue décor and Oak cabinetry.*



Go ahead. Take a look at this champion of the ultimate RV experience. It's a well-built luxury toy hauler that is just itching to hit the road with you. Pack up the toys in the X-Aire garage or pick some up along the way. It's a space ready to be filled and built for many purposes – hauling, working, sleeping and playing.

The 12-foot garage gives you ample space for all your quads, bikes, antiques, show dogs, golf carts, or whatever you please. Travel worry-free with the built-in landing strips that provide secure anchors for tying down your valuable cargo. When you

need to roll up your sleeves and get to work, take advantage of the metal drop-down workbench with storage shelves. Get the job done with peace of mind thanks to the thick-ply Thermoplastic Olefin (TPO) black diamond flooring that is petro-chemical and slip resistant, and much tougher than linoleum or painted floors. It helps ensure a safe work area that's a cinch to clean, and allows for easy transformation into a quiet space.

When the playing is done, the garage doubles as a sleeping area with two optional beds. X-Aire gives you the flexibility to use both beds at once, or leave the top in place, while taking advantage of just the bottom one. The lower bunk also serves as two back-to-back couches so you can enjoy the view when the ramp is open or watch television in the back. Pull down the screen to create your own porch area and enjoy the great outdoors, while keeping bugs and debris outside.



# Hit the Road Jack

Built for extreme usage, the durable 3,000-pound-capacity ramp door with low ramp angle endures the wear and tear of loading a heavy cargo. The strut dampeners provide a unique, counter-balanced mechanism for near-effortless opening and closing of the ramp. No need to bench-press the ramp or worry about pinching springs. When it's closed, enjoy the fully finished rear end cap that looks like a typical fifth wheel. No springs and the lockable, hidden latches give the cap a polished, clean look. The end cap is a Newmar innovation and a patent is pending. The vibrant graphics blend with the rest of the exterior, creating a unified look from tip to tail.



# Newmar Value... in Every X-Aire

## Newmar Express Limited Warranty

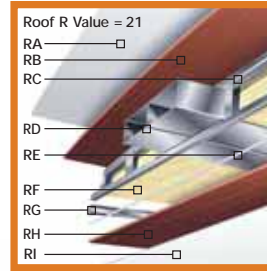
As proof of our commitment to you, we at Newmar back every X-Aire fifth wheel with our industry-leading, one-year Newmar Express Limited Warranty. Ask your dealer for details.

Your X-Aire fifth wheel reflects Newmar's long history of product innovation and industry "firsts." It's a showcase for Newmar value.

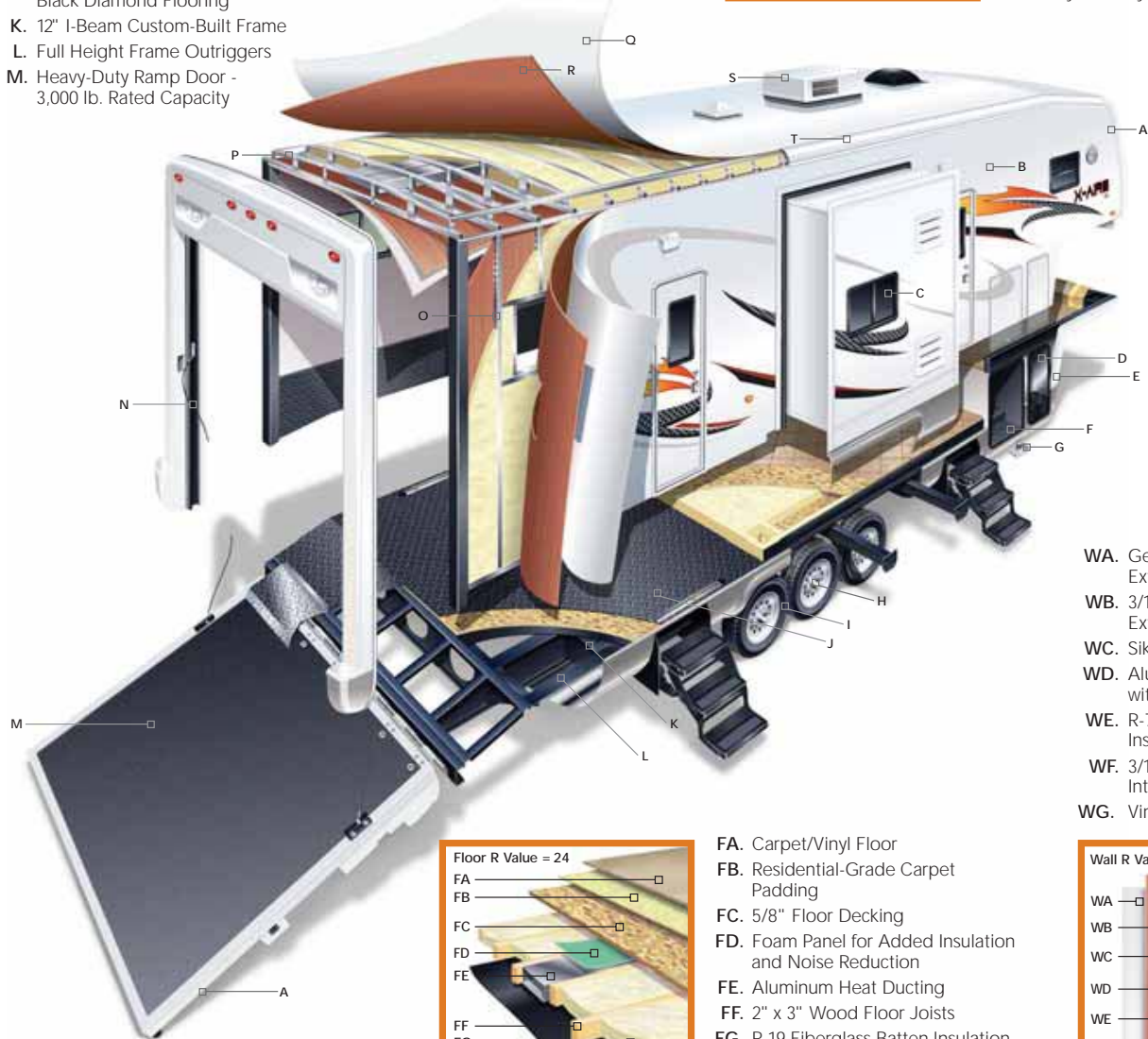
- A. Aerodynamic Gelcoated Fiberglass End Caps
- B. Gelcoated Exterior Sidewall
- C. Dark Tinted Safety Glass
- D. Dual Battery Box (4 with option)
- E. Molded Lower Sidewall Skirting and Gooseneck
- F. Pass-Through SuperStorage™
- G. Power Front Jacks with Manual Override
- H. EZ Lube® Hubs
- I. MOR/ryde® LRE Suspension
- J. Thermoplastic Olefin (TPO) Black Diamond Flooring
- K. 12" I-Beam Custom-Built Frame
- L. Full Height Frame Outriggers
- M. Heavy-Duty Ramp Door - 3,000 lb. Rated Capacity
- N. Recessed Gas Struts for Ramp Door Lift Assist
- O. 16" O.C. Aluminum Sidewall Studding
- P. 16" O.C. Aluminum Roof Rafters
- Q. Walkable Roof Decking
- R. BriteTEK™ Roof
- S. 15,000 BTU Total Comfort™ Ducted Air Conditioning
- T. Radius Aluminum Roof Wraps

## The Limited Five-Year Structural Warranty

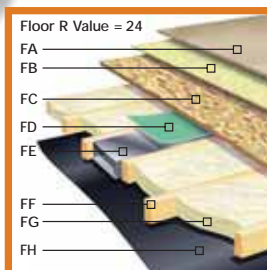
If any part of your Newmar recreational vehicle superstructure (which is the steel/aluminum structure of the sidewall, roof, or frame) fails to perform properly within five years, from the date of purchase, due to faulty workmanship or material supplied by Newmar, it will be repaired without charge for either parts or labor by Newmar. This structural warranty is available only to the original purchaser and is non-transferable.



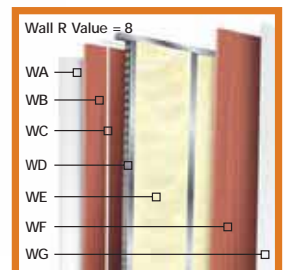
- RA. Strong, Durable BriteTEK™ Roof
- RB. 9mm Plywood Decking
- RC. Aluminum Rafter Framing
- RD. Central Air Conditioning Ducting
- RE. Sikaflex® Adhesive
- RF. R-19 Fiberglass Batten Insulation
- RG. Aluminum Stringer Framing
- RH. 3/16" Plywood Ceiling Panel
- RI. Vinyl Overlay



- WA. Gelcoated Fiberglass Exterior Sidewall
- WB. 3/16" Plywood Exterior Wall
- WC. Sikaflex® Adhesive
- WD. Aluminum Framing with C-Channels
- WE. R-7 Fiberglass Batten Insulation
- WF. 3/16" Plywood Interior Wall
- WG. Vinyl Overlay



- FA. Carpet/Vinyl Floor
- FB. Residential-Grade Carpet Padding
- FC. 5/8" Floor Decking
- FD. Foam Panel for Added Insulation and Noise Reduction
- FE. Aluminum Heat Ducting
- FF. 2" x 3" Wood Floor Joists
- FG. R-19 Fiberglass Batten Insulation
- FH. Continuous Corrugated Plastic Underbelly





# Extra Mile Differences...

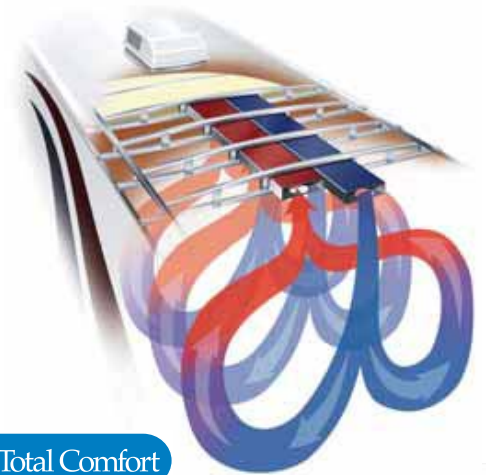
## Beauty Within the Beast

What makes Newmar different?

Newmar understands the real world of RV travel and works diligently to design and build quality products that provide comfort and superior performance. Newmar designers take more time and use more materials to get it right. As a vertically integrated manufacturer, Newmar builds much of the recreation vehicle themselves, which means more control over design and quality. Going that extra mile to create a top-quality toy hauler results in a peace of mind unique to Newmar owners. That's the Newmar difference.



**Newmar Builds Walls and Roofs** residential-style, with studs located 16 inches on-center. Extra C-channel aluminum studs and extra welds may cost more, but they provide a superior wall structure. Stud construction also allows for residential-style wiring and conveniently located switches. Walls and wall studs, ceilings and rafters, are then bonded with a technologically-advanced adhesive, Sikaflex®, that is durable and flexible to absorb and soften the effects of travel.



**The Total Comfort® Dual In-Roof Ducting System** was engineered by cooling experts especially for Newmar. With multiple strategically placed vents, the system provides true central air conditioning for unparalleled cooling efficiency, balance and whisper-quiet operation.



**An Incomparable Superstructure, the X-Aire Chassis** is designed and built by Newmar with stronger steel, extra reinforcements and additional welds to make it exceptionally robust. The huge 12-inch steel I-beams provide superior Moment of Inertia (stiffness) and Section Modulus (bending stress) over smaller, thinner I-beams and stacked tube steel. Engineers take advantage of the entire height of the I-beam to attach full 12-inch steel outriggers for extended stability and strength. Many other outriggers are partial height.



**The Newmar-Originated Slideout**, with its 2x4 steel rails and massive reinforcement, is the strongest, most reliable and most durable on the market. A superior-strength platform results from welding hefty guide rail tubes to both mainframe rails and welding extra reinforcement into the system. Closed-channel frames keep small animals and outside debris from entering the coach.



**Newmar-Made Skid Bars** are a lot different from the flimsy ones that are more commonly used. Constructed of thick bar steel and reinforced with even more steel, this is the super-duty, real-world version to help protect the RV underbelly from abruptly angled roadway approaches. A Newmar exclusive.



**Another Newmar Innovation, the Slideout Cog Wheel**, was designed for a fuller engagement of the gears to prevent common gear slippage. The complete slideout system – from the superior strength foundation through the durable high-torque motor mechanism, to the independent operation and the unique self-storing travel-lock arms – is designed to provide years of convenient, smooth, dependable service.

Exterior  
Color Options



(standard) Silver Metallic



(optional) Galaxy

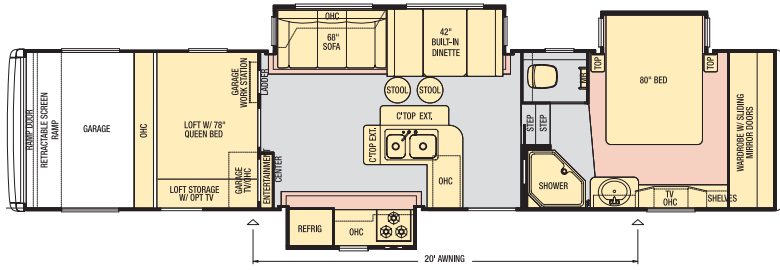
# Built for the Journey

1. X-Aire Rides on 16-Inch, 8-Lug Nut, D-Rated Tires as standard equipment (shown with optional polished aluminum wheels). The triple axles provide a more stable ride and comfortable tow, protecting both the coach and the cargo.
2. The Fueling Station convenience comes standard. It allows you to fill up your toys so the adventure doesn't have to end when the tank hits empty.
3. The Expansive Pass-Through SuperStorage™ Area is heated and lighted. It boasts a handy cargo hook and three-way access. It also provides access to the separate utility compartment and houses the water pump for sound isolation.
4. The Standard Detachable Side Ladder on the X-Aire provides easy access to the strong BriteTEK™ covered walkable rooftop.
5. MOR/ryde™ Pin Box allows you to enjoy a smooth, comfortable towing experience. The optional pin box diminishes the transfer of forces from the fifth wheel to the truck, acting as a cushion to reduce the effect of road shock.
6. The Hot/Cold Exterior Faucet comes with a 15-foot quick-connect coil water hose and sprayer for convenient outside clean-up and water source.
7. Enjoy some tunes on the Exterior AM/FM Radio with CD Player and Remote. From Mozart to Metallica, listen to your favorite songs through the two exterior speakers as well as the two found inside the garage.
8. Take it to the extreme and upgrade to the optional KICKER® Sound System. The 350 watt, 4-channel power amplifier, 6-inch coaxial speakers and 10-inch subwoofer let you rock out to your favorite tunes, while working or playing.

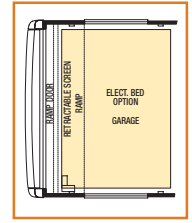


**Model XAFW 38CKTH**

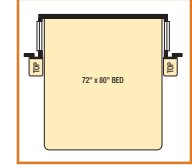
Tire Size	235/80R16-D
GAWR	5,200
GVWR	19,000
App. Length	40' 8"
App. Height	12' 11"
Width	101"
App. Dry Weight	14,500
App. Hitch Weight	3,600
Fresh Water (gal.)	105
Grey (gal.)	84
Sewage Cap. (gal.)	42
App. Hitch Height	47"
Heat Cap. (BTU)	35,000



Vinyl Floor Carpet



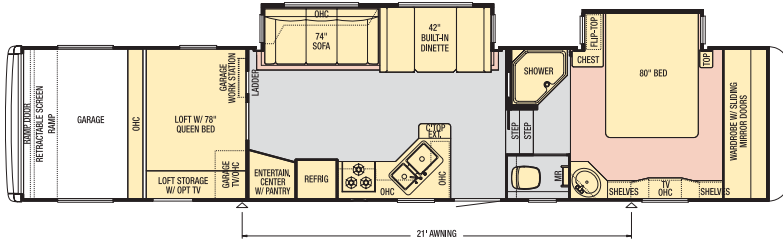
Garage Bed option available on all models.



King-Size Bed only available on 40CKFB.

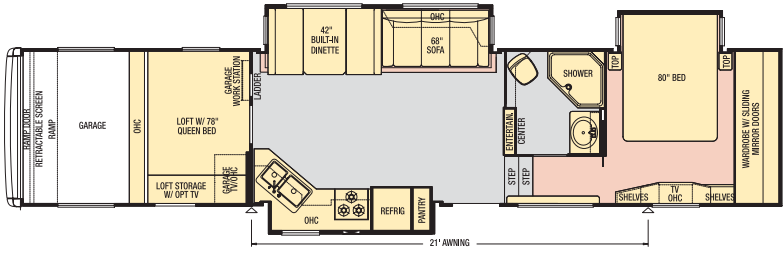
**Model XAFW 40CKFB**

Tire Size	235/80R16-D
GAWR	5,200
GVWR	19,000
App. Length	42' 1"
App. Height	12' 11"
Width	101"
App. Dry Weight	14,480
App. Hitch Weight	3,330
Fresh Water (gal.)	105
Grey (gal.)	84
Sewage Cap. (gal.)	42
App. Hitch Height	47"
Heat Cap. (BTU)	35,000



**Model XAFW 40CKSH**

Tire Size	235/80R16-D
GAWR	5,200
GVWR	19,000
App. Length	42'
App. Height	12' 11"
Width	101"
App. Dry Weight	14,750
App. Hitch Weight	3,540
Fresh Water (gal.)	105
Grey (gal.)	84
Sewage Cap. (gal.)	42
App. Hitch Height	47"
Heat Cap. (BTU)	35,000



# Interior Options Color

Vinyl Flooring

Vinyl Flooring

Hardware

Countertop

Countertop

Samsung Staron™ Countertop

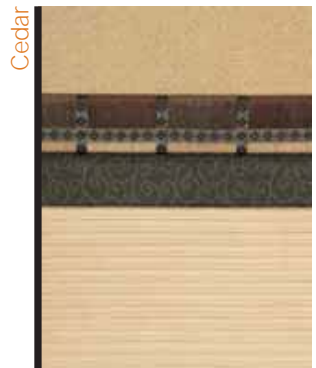
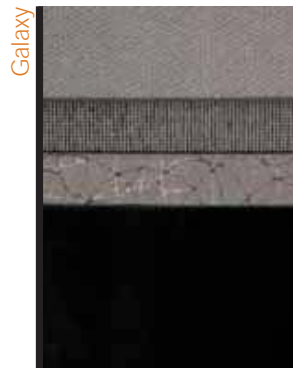
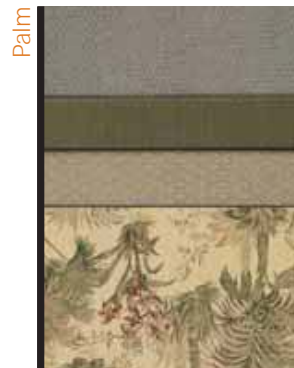
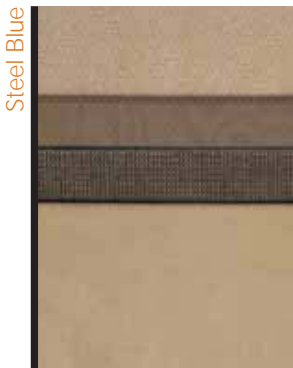
(Standard) Oak

Simulated Plank Flooring

Fall Spice

Simulated Plank Flooring

Platinum Gray



# 2008 X-AIRE Toy Hauler

## Optional Features

### Air Conditioning and Heating

15M Penguin Central Air Conditioner with Heat Pump

Extra 13.5M Penguin Central Air Conditioner in Bedroom

Wire and Brace for Second Air Conditioner

### Appliances and Accessories

Icemaker Added to Refrigerator\*

Norcold® 10 cu. ft. Refrigerator

30" Convection Microwave and Three-Burner Cooktop

Central Vacuum with Floor Port and Deluxe Tool Kit

20" LCD TV in Bunk/Loft Area

20" LCD TV in Garage

KICKER® Sound System

### Convenience Package:

Floor Safe, Hair Dryer, Cordless Vac, Pillow-top Mattress and Sofa Pillows

Prep for Ground Tripod Satellite Dish with Phone, TV Jack and Receptacle

Washer/Dryer Prep

### Cabinets and Furniture

Fall Spice Cabinetry

Platinum Gray Cabinetry

Freestanding Dinette Table with Two Chairs

Two Fixed Dinette Chairs

Two Folding Dinette Chairs

King Bed with 72" x 80" King Koil™ Mattress

Bunk Beds with Electric Bed Loft in Garage

### Electrical Features

5.5 kW Cummins Onan® Generator with Auto Changeover and Gen Prep (Gen Prep - Includes Energy Command, Fuel Tank with Gauge)

1,200 Watt Inverter with Four 12V Batteries

Solar Prep

Battery Disconnect Switch

Fluorescent Ceiling Lights

### Exterior Features

One Exterior Pullout Storage Tray

Entry Porch with Collapsible Handrail at Front Entrance Door

12V Heat Pads for Holding Tanks (N/A on CSA)

### Interior Features

Simulated Ceramic Tile in Kitchen, Bath and Living Room

Simulated Plank Floor in Kitchen and Foyer

Staron™ Solid Surface Kitchen and Bath Countertops with Integrated Solid Surface Bowls

### Windows, Awnings and Vents

Carefree® Power Side Awning

Create-A-Breeze Vent with Automatic Lift in Kitchen and Over Bath Sink

Double-Pane Tinted Safety-Glass Windows

Screen for Rear Cargo Door

### Chassis Features

MOR/ryde® Rubber Pin Box

Electric Over Hydraulic Disc Brakes

Rear 12V Power Twin Stabilizer Jacks

## Standard Features

### Air Conditioning and Heating

15M Brisk Air Central Air Conditioner with Cold Air Ducted into Garage

Two 30 lb. Propane Gas Bottles with Auto Regulator

35,000 BTU Furnace with In-Floor Ducted Heat

Propane Leak Detector

### Appliances and Accessories

12 Gal. Gas/Electric Water Heater with Direct-Spark Ignition

Microwave

Three-Burner Cooktop with Oven and Piezo Ignition

Metal Bi-Fold Range Cover

Range Hood with Light and Fan

Corian® Knife Block behind Range

26" LCD TV on Pullout Tray in Living Room Entertainment Center

Surround Sound System with AM/FM Radio, DVD, CD and Sub Woofer

20" LCD TV in Bedroom

Norcold® 8 cu. ft. Refrigerator

Cable TV Connection with RG-6 Coax

TV Antenna with Power Booster and Two Interior Jacks

Living Room Ceiling Fan

Hardwood Raised-Panel Refrigerator Front

Magazine Rack in Water Closet

Roof-Mounted Satellite Dish Prep

Exterior AM/FM/CD Radio with Two Outside and Two Garage Speakers

Fire Extinguisher, Smoke Detector and Carbon Monoxide Detector

### Cabinets and Furniture

Oak Cabinetry with Hardwood Raised-Panel Cathedral Overhead Cabinet Doors

Built-In Booth Dinette

Hide-A-Bed Sofa\*

Recliner/Sofa\*

Two Bar Stools\*

Shoe Storage Shelves in Front Wardrobe

Metal Drawer Guides

Laminate Countertop in Kitchen with Acrylic Sinks

Laminate Countertop in Bathroom with Acrylic Sink

One Teflon® Sink Cover

Kitchen Countertop Extension\*

Pullout Pantry with Fixed Shelves\*

Molded Silverware Divider Tray

Metal Storage Cabinet with Paper Towel Holder in Garage

Queen Bed

Lifts on Bed Top to Access Storage Area

Your Official X-Aire Dealer:

### Electrical Features

110V Exterior Receptacle

12V Lighting Throughout (Except Dinette)

Incandescent Lighting in Garage

Wall Reading Lights in Living Area Slideouts

50 Amp Electrical Service with Detachable Cord

75 Amp Converter

Dual Battery Box Compartment

Three Exterior Security Lights

Extra Exterior TV Jack

Manually Operated Hold-To-Run Slideout Switch

### Exterior Features

Burnt Orange Graphics with Painted Skirt

30" Radius Main Entry Door and 26" Door at Garage

Triple Step at Main Entrance Door

BriteTEK™ Roof with Walkable Decking and Radius Aluminum Roof Wrap

Cargo Hook in Exterior Storage Area

Extendable Grab Handle at Main Entrance Door with Small Grab Handle at Garage Door

Fueling Station in Garage

Gelcoated Exterior Sidewalls

Gelcoated Fiberglass Front End Cap and Rear Cargo Door

Side Ladder

### Interior Features

Vinyl Ceiling Panels

Deluxe Carpeting with High-Density Padding in Living Room and Bedroom

Vinyl Floor in Kitchen, Living Room and Bathroom with Woodgrain Laminate Steps

Day/Night Pleated Window Shades with Jabots in Living Room and Bedroom

Valances in Garage

Mini Blinds in Kitchen and Bathroom

Decorative Wall Border

Interior Assist Handle at Main Entry Door

Kitchen Wastebasket

Flat-Panel Interior Passage Doors

Quilted Bedspread with Shams

Quilted Fabric Headboard

### Plumbing and Bath Features

Demand Water System with SHURflo® Pump

Bath Accessories:

Toilet Paper Holder and Towel Bar

Shower with Glass Door

Adjustable-Height Shower Head

High-Rise Kitchen Faucet with Pullout Sprayer

Medicine Cabinet with Deluxe Lighting

Monitor Panel

Sewage Holding Tank Rinse

Sewage Hose Storage Tray

### Plumbing and Bath Features (cont.)

Hot/Cold Exterior Faucet with 15' Coil Hose and Sprayer

Thetford™ Aqua Magic II Toilet with Sprayer Attachment

In-Line Water Filter for Entire Unit

Water Heater By-pass

### Construction Features

12" I-Beam Custom-Built Frame

5/8" Structurwood® Floor Decking

Aluminum Framed Sidewalls, Roof, Front and Rear on 16" Centers

Enclosed Underbelly with Sheets of Industrial Strength Black Plastic, Ducted Heat and Insulated

PolarPak R-19™ Insulation in Roof, Floor, and Front End Cap

Extended Pin Box

Composite R-Values:

Roof: R-21 Floor: R-24 Sidewall: R-8

### Windows, Awnings and Vents

Create-A-Breeze Vent with Auto Lift in Bathroom and Loft Area

Carefree® Fiesta LTD Armored Side Awning

Dark Tinted Safety-Glass Windows

Skylight in Bathroom\*

Ram Air Vent System in Garage

Window above Main Slideout Room

### Chassis Features

Shock Absorbers

16" Tires and Spare Tire

MOR/ryde® LRE Suspension with EZ Lube® Axles

Polished Aluminum Wheels

Power Front Jacks

Quick-Release H/D Pin for Front Jack Legs

Rear Stabilizer Jacks (1 Pair)

\*Check with Dealership on Floorplan Availability



**NEWMAR**<sup>SM</sup>

WHEN YOU KNOW THE DIFFERENCE™

**NEWMAR CORPORATION**  
355 N DELAWARE ST  
PO BOX 30  
NAPPANEE IN 46550-0030  
574-773-7791 Fax 574-773-2895  
[www.newmarcorp.com](http://www.newmarcorp.com)

Some features in our literature are optional. Colors and finishes are photographic representations. The actual materials may look different. Prices, specifications and floorplans are subject to change at Newmar's discretion, without prior notice or obligation. Please see your dealer for actual samples and specifications.  
©2007 Newmar Corporation. Litho in USA. NEW21372 6/07-20M