

The Fully-Loaded Difference

CYPRESS

2009 Fifth Wheel

NEWMAR



Inbox

From: Anita

To: Tracy

Subject: Hello from the road!

RVing has never been so good! This Cypress has all the comfort we could ask for and the quality extras are beyond what we could've expected. From the old-world craftsmanship to the latest technology, this RV has it all...and then some. It even tows easily and has tons of interior space. Our only question is: why did we wait so long?! I'll write more later, but right now we have some sights to see.

On the road and loving it,
Anita

Sa



Inbox

Reply

Reply All

Forward

Delete

Prev

Next

Compose

Sent Mail

Get Mail

From: Bill

To: Craig

Subject: What a difference!

Just wanted to drop you a line and let you know how our Cypress is treating us. We checked out a lot of fifth wheels before choosing this one and we certainly chose well. The Cypress is clearly different from other fifth wheels in its class. Things like kitchen toe kicks, cathedral-height ceilings, hardwood cabinet doors and dinette chairs with in-seat storage show how Newmar goes the extra mile. And, man, does it make a difference! The kids even like it. They're having a blast on the road—well, as much fun as teenagers can have with their parents!

Talk to you later —Bill

Inbox

Reply

Reply All

Forward


Delete

Prev

Next

Compose

Look! No electronics!



vor

the Differences

The hide-a-bed sofa and glider recliners embrace you as you delight in the optional fireplace or watch your favorite television program on the LCD TV. A full video and audio entertainment package comes standard.

The freestanding dinette table and chairs with in-seat storage provide comfort and functionality as you enjoy meals or chat with friends.



37LSRE shown with Quartz décor and Fall Spice cabinetry.

The hand-crafted, rich wood cabinets and fascias fill the Cypress with warm beauty. Deep, pullout drawers in the fully adjustable sliding pantry hold all your necessary provisions...and even a few extras.

The eight-cubic-foot refrigerator, microwave, 22-inch oven and three-burner cooktop with piezo ignition allow you to cook up any size meal for any size craving.

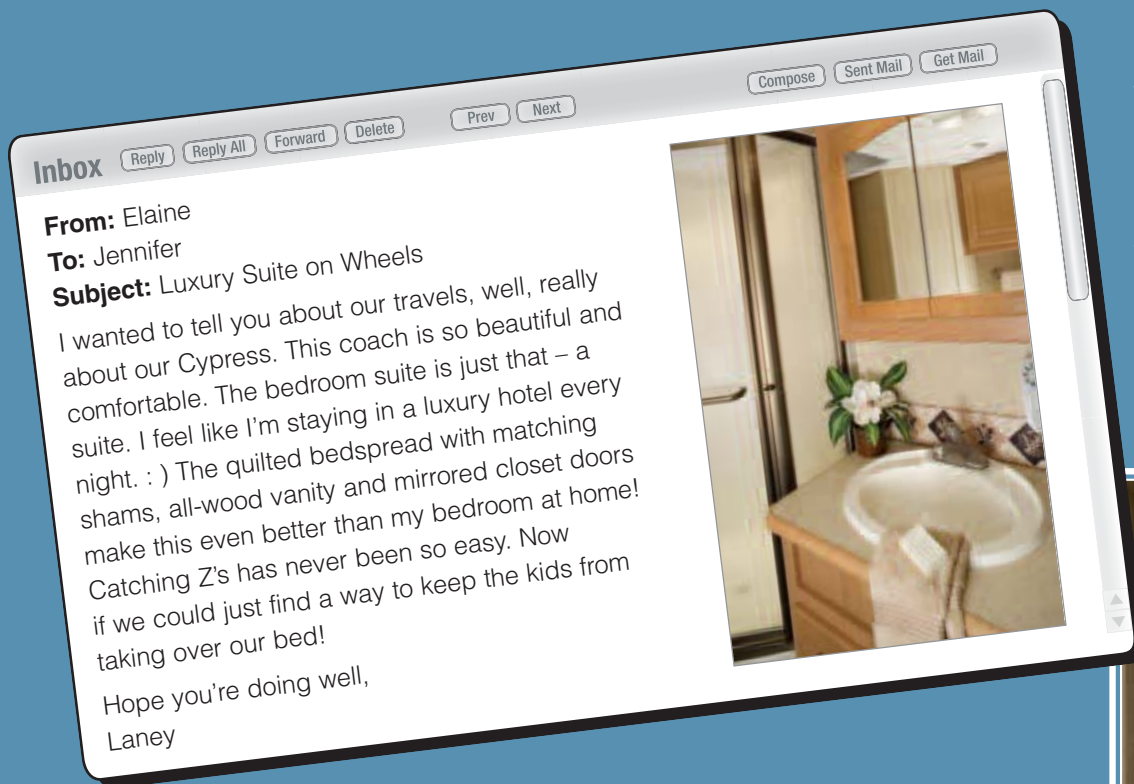
EMD

Extra Mile Differences

Newmar Builds Walls and Roofs

residential-style with studs located 16 inches on-center. Extra C-channel aluminum studs and extra welds may cost more, but they provide a superior wall structure. Stud construction also allows for residential-style wiring and conveniently located switches. Walls and wall studs are then bonded with a technologically advanced adhesive, Sikaflex®, that is durable and flexible to absorb and soften the effects of travel.





The bath area features a one-piece fiberglass shower with molded seat and privacy rain glass, a Create-A-Breeze vent for proper air circulation, and a vanity with a seamless laminate countertop and hardwood edging.

House all your travel needs in the cedar-lined closet, bureau with toe-kick and easily accessible under-bed storage.



EMD

Extra Mile Differences

The Total Comfort® Dual In-Roof Ducting System was engineered by cooling experts especially for Newmar. With multiple strategically-placed vents, the system provides true central air conditioning for unparalleled cooling efficiency, balance and whisper-quiet operation.



Newmar does things differently.

Extra Mile Differences are found throughout Newmar RVs – in places you see and in places that are not so obvious. Look for the **EMD** emblem to learn about those features that show how Newmar goes above and beyond to provide a stronger, more durable, superior product.

The warm ambiance invites you to relax among the carefully chosen hardwood fascias, pleated day/night shades and fabric headboard. Before turning in, watch some TV on the optional 19-inch LCD screen.

The Difference is Comfort

32RKSH shown with Quartz décor and Baltic Beech cabinetry. Headboard shown below is part of the Cypress Diamond Package.



A Difference in Quality



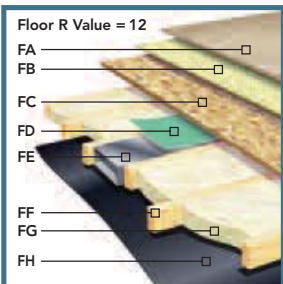
Your Cypress fifth wheel reflects Newmar's long history of product innovation and industry "firsts." You can depend on the exacting standards and meticulous care by which this fifth wheel is built. It's a showcase for Newmar value.

- A. Aerodynamic Gelcoated Fiberglass End Caps
- B. Gelcoated Exterior Sidewall
- C. Dark Tinted Safety Glass
- D. Dual Battery Box
- E. Molded Lower Sidewall Skirting and Gooseneck
- F. Power Front Jacks with Manual Override

- G. Pass-Through SuperStorage™
- H. 12" I-Beam Custom-Built Frame
- I. Full-Height Frame Outriggers
- J. EZ Lube® Hubs
- K. MOR/ryde® LRE Suspension

- L. Radius Aluminum Roof Wraps
- M. 15,000 BTU Total Comfort™ Ducted Air Conditioning
- N. 16" O.C. Aluminum Sidewall Studding

- O. BriteTEK™ Roof
- P. Walkable Roof Decking
- Q. 16" O.C. Aluminum Roof Rafters
- R. Side Awning



- FA. Carpet/Vinyl Floor
- FB. Residential-Grade Carpet Padding
- FC. 5/8" Floor Decking
- FD. Foam Panel for Added Insulation and Noise Reduction
- FE. Aluminum Heat Ducting

- FF. 2" x 3" Wood Floor Joists
- FG. R-7 Fiberglass Batten Insulation

- FH. Continuous Corrugated Plastic Underbelly



2



4



3



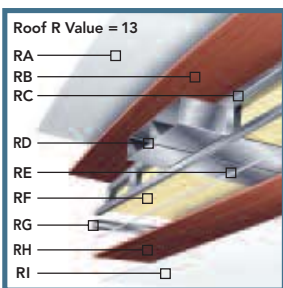
Newmar Express Limited Warranty

As proof of our commitment to you, we at Newmar back every Cypress fifth wheel with our industry-leading, one-year Newmar Express Limited Warranty. Ask your dealer for details.

The Limited Five-Year Structural Warranty

If any part of your Newmar recreational vehicle superstructure (which is the steel/aluminum structure of the sidewall, roof or frame) fails to perform properly within five years, from the date of purchase, due to faulty workmanship or material supplied by Newmar, it will be repaired without charge for either parts or labor by Newmar. This structural warranty is available only to the original purchaser and is non-transferable.

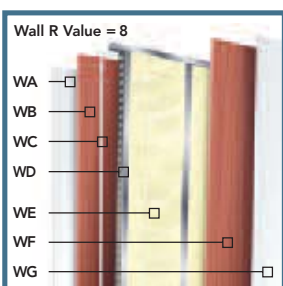
The Cypress front cap has been redesigned to provide easy towing with short-bed trucks as well as standard-bed trucks, allowing for a 60-degree turning angle while maintaining its pleasantly streamlined look.



Roof R Value = 13

RA — ☐
RB — ☐
RC — ☐
RD — ☐
RE — ☐
RF — ☐
RG — ☐
RH — ☐
RI — ☐

- RA. Strong, Durable BriteTEK™ Roof
- RB. Walkable Roof Decking
- RC. Aluminum Rafter Framing
- RD. Central Air Conditioning Ducting
- RE. Sikaflex® Adhesive
- RF. R-11 Fiberglass Batten Insulation
- RG. Aluminum Stringer Framing
- RH. 3/16" Plywood Ceiling Panel
- RI. Vinyl Overlay



Wall R Value = 8

WA — ☐
WB — ☐
WC — ☐
WD — ☐
WE — ☐
WF — ☐
WG — ☐

- WA. Gelcoated Fiberglass Exterior Sidewall
- WB. 3/16" Plywood Exterior Wall
- WC. Sikaflex® Adhesive
- WD. Aluminum Framing with C-Channels
- WE. R-7 Fiberglass Batten Insulation
- WF. 3/16" Plywood Interior Wall
- WG. Vinyl Overlay

1. Expansive Pass-Through SuperStorage™ Area is heated and lighted. It boasts a handy cargo hook, three-way access and optional pullout storage tray. It also provides access to the separate utility compartment and houses the water pump for sound isolation.

2. Manually-Operated Sliding Porch with triple step and handrail is available as an option. It provides a wider platform for safety and stability entering and exiting the coach.

3. Optional MOR/ryde® Pin Box absorbs jolts between the fifth wheel and the truck, and acts as a cushion to significantly reduce the effect of chucking and road shock, providing a smooth and comfortable towable experience.

4. The Optional Carefree® 12-Volt Travel'r Power Side Awning extends or retracts effortlessly in less than 20 seconds with the simple touch of a button!

EMD

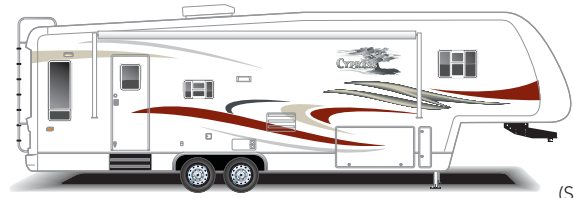
Extra Mile Differences

An Incomparable Superstructure, the Cypress Chassis is designed and built by Newmar with stronger steel, extra reinforcements and additional welds to make it exceptionally robust. The huge 12-inch steel I-beams provide superior Moment of Inertia (stiffness) and Section Modulus (bending stress) over smaller, thinner I-beams and stacked tube steel.

Engineers take advantage of the entire height of the I-beam to attach full 12-inch steel outriggers for extended stability and strength. Many other outriggers are partial height. Newmar believes that a home on wheels should start with a solid and stable foundation.



Exterior Color Options



(Standard)
Vinyl Graphics - Garnet



(Optional)
Vinyl Graphics with Painted Skirt -
Garnet-Charcoal

The Cypress Diamond Package Includes:



- Padded Vinyl Ceiling
- Decorative Wardrobe Header
- Second Sink Cover
- Pillow-Top Mattress
- Halogen Ceiling Lights
- Upgraded Slideout Fascias
- Deluxe Living Room Mirror
- Rear Ladder
- Upgraded Headboard with Bedpost Accents
- Raised-Panel Interior Passage Door
- Tripod Satellite Prep
- PolarPak R-19™ Insulation (roof, floor, front and rear end caps)
- Exterior Vinyl Graphics with Painted Skirt

Interior Color Options

(Standard)
Baltic Beech



Simulated
Plank Flooring



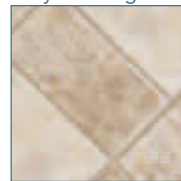
(Optional)
Fall Spice



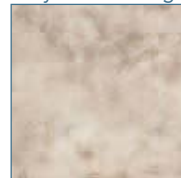
Simulated
Plank Flooring



(Standard)
Vinyl Flooring



(Optional)
Vinyl Tile Flooring



Hardware



(Standard)
Countertop



(Optional)
Corian® Countertop



Terra Cotta



Bisque



Quartz



Vinyl Floor

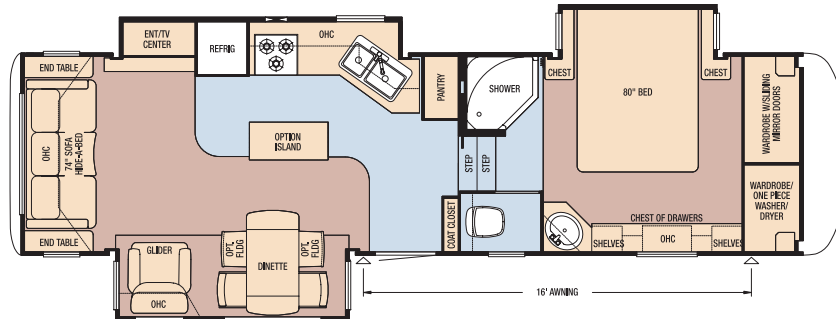
Carpet



The Newmar-Originated Slideout, with its 2x4 steel rails and massive reinforcement, is the strongest, most reliable and most durable on the market. A superior-strength platform results from welding hefty guide rail tubes to both mainframe rails and welding extra reinforcement into the system. Closed-channel frames keep small animals and outside debris from entering the coach.

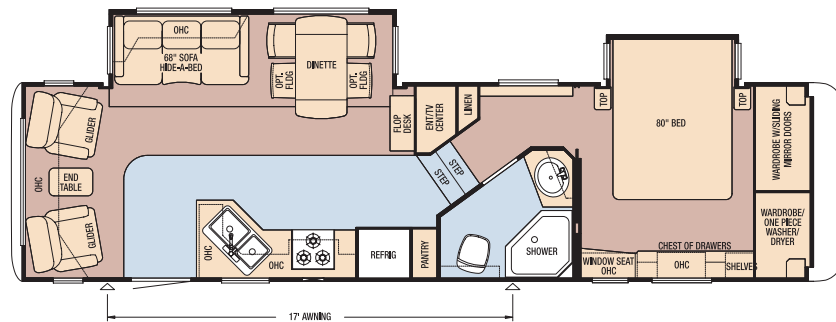
Model CPFW 31RLKS

Tire Size	235/85R16-G
GAWR	7,000
GVWR	15,500
App. Length	34' 8"
App. Height	12' 11"
Width	101"
App. Dry Weight	12,245
App. Hitch Weight	2,325
Fresh Water (gal.)	75
Grey (gal.)	84
Sewage Cap. (gal.)	42
App. Hitch Height	47"
Heat Cap. (BTU)	35,000



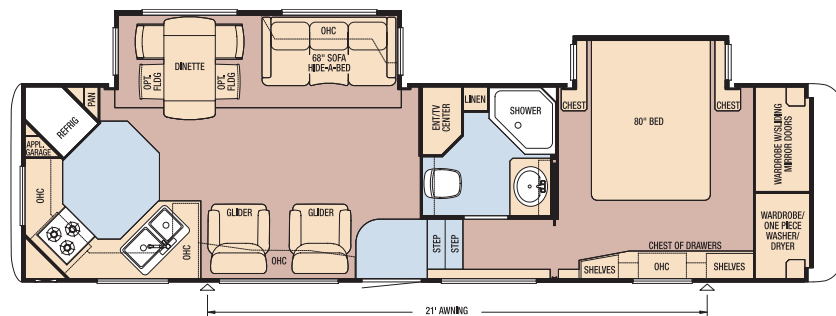
Model CPFW 32CKAH

Tire Size	235/85R16-G
GAWR	7,000
GVWR	15,500
App. Length	35' 7"
App. Height	12' 11"
Width	101"
App. Dry Weight	11,650
App. Hitch Weight	2,215
Fresh Water (gal.)	75
Grey (gal.)	84
Sewage Cap. (gal.)	42
App. Hitch Height	47"
Heat Cap. (BTU)	35,000



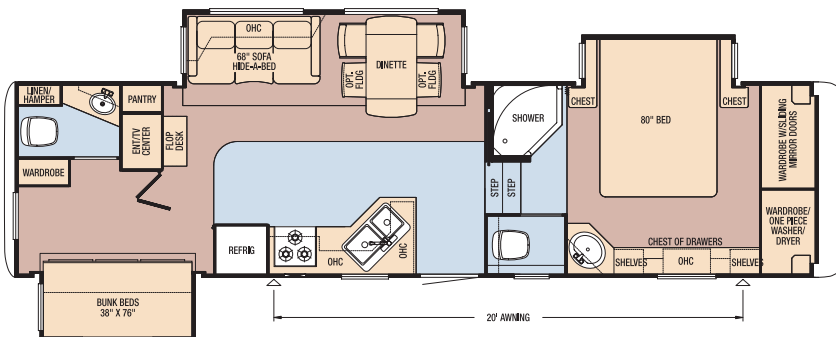
Model CPFW 32RKSH

Tire Size	235/85R16-G
GAWR	7,000
GVWR	15,500
App. Length	35' 8"
App. Height	12' 11"
Width	101"
App. Dry Weight	12,080
App. Hitch Weight	2,295
Fresh Water (gal.)	75
Grey (gal.)	84
Sewage Cap. (gal.)	42
App. Hitch Height	47"
Heat Cap. (BTU)	35,000



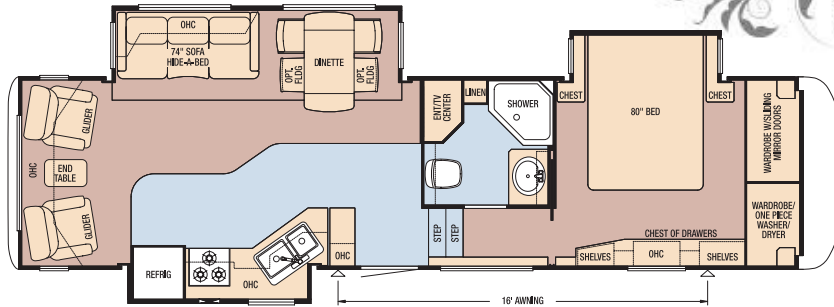
Model CPFW 33RBHB

Tire Size	235/85R16-G
GAWR	7,000
GVWR	16,100
App. Length	36' 8"
App. Height	12' 11"
Width	101"
App. Dry Weight	13,000
App. Hitch Weight	2,470
Fresh Water (gal.)	75
Grey (gal.)	84
Sewage Cap. (gal.)	84
App. Hitch Height	47"
Heat Cap. (BTU)	35,000

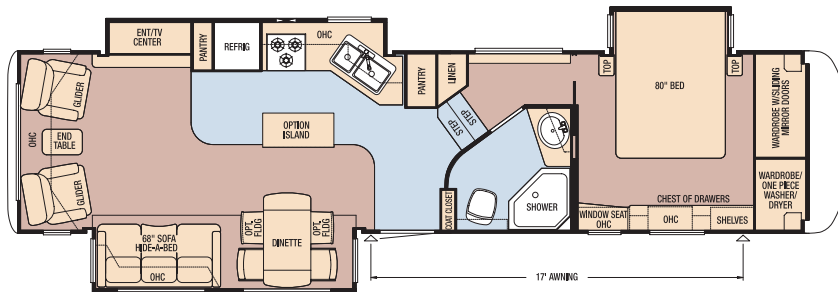


Distinctive Differences

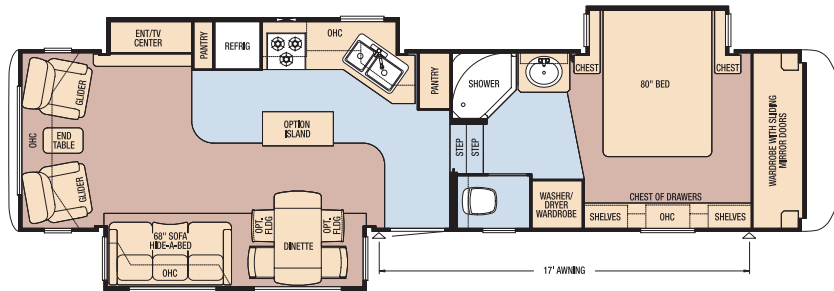
Model	CPFW 33RLSH
Tire Size	235/85R16-G
GAWR	7,000
GVWR	16,100
App. Length	36' 4"
App. Height	12' 11"
Width	101"
App. Dry Weight	12,650
App. Hitch Weight	2,405
Fresh Water (gal.)	75
Grey (gal.)	84
Sewage Cap. (gal.)	42
App. Hitch Height	47"
Heat Cap. (BTU)	35,000



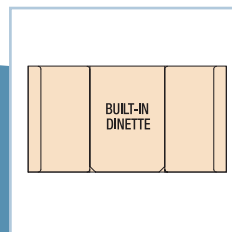
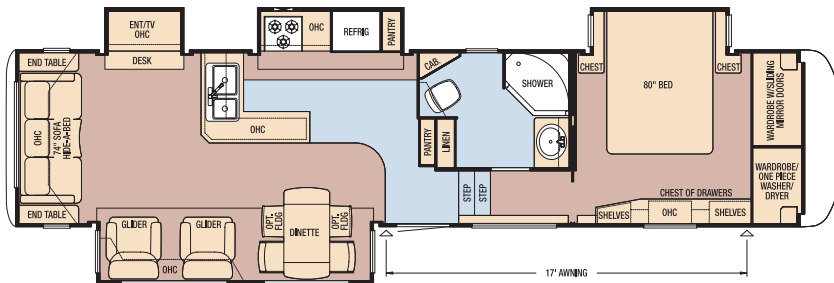
Model	CPFW 35KSAH
Tire Size	235/85R16-G
GAWR	7,000
GVWR	16,100
App. Length	38' 6"
App. Height	12' 11"
Width	101"
App. Dry Weight	12,875
App. Hitch Weight	2,445
Fresh Water (gal.)	75
Grey (gal.)	84
Sewage Cap. (gal.)	42
App. Hitch Height	47"
Heat Cap. (BTU)	35,000



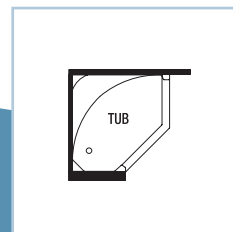
Model	CPFW 35KSRL
Tire Size	235/85R16-G
GAWR	7,000
GVWR	16,600
App. Length	38' 6"
App. Height	12' 11"
Width	101"
App. Dry Weight	13,300
App. Hitch Weight	2,525
Fresh Water (gal.)	75
Grey (gal.)	84
Sewage Cap. (gal.)	42
App. Hitch Height	47"
Heat Cap. (BTU)	35,000



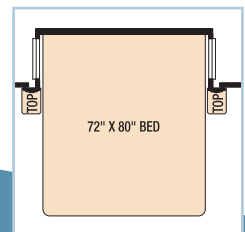
Model	CPFW 36LKSH
Tire Size	215/75R17.5-H
GAWR	8,000
GVWR	17,500
App. Length	39' 7"
App. Height	12' 11"
Width	101"
App. Dry Weight	14,020
App. Hitch Weight	2,665
Fresh Water (gal.)	75
Grey (gal.)	84
Sewage Cap. (gal.)	42
App. Hitch Height	47"
Heat Cap. (BTU)	35,000



Built-In Booth Dinette with (2) Drawers
option available on all models.



Fiberglass Tub with Glass Door
option available on most, not all, models.



King-Size Bed
available on all models except
32CKAH, 35KSAH & 39CKDB.



E.M.D

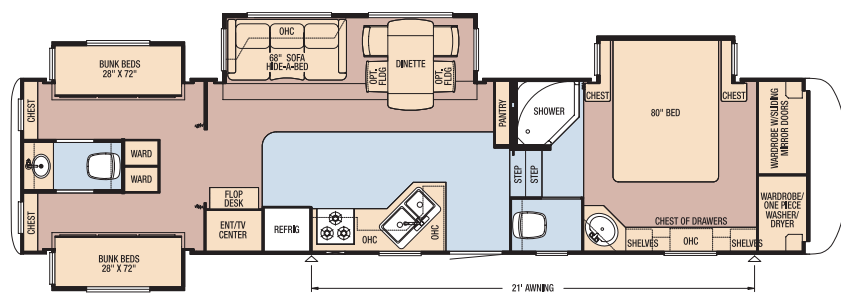
Extra Mile Differences



Newmar Pioneered and has a Patent on the Flat-Floor Slideout. Sliding a room in and out poses some out-of-the-way engineering and sealing challenges to do it right. Newmar developed an improved slideout wedge roof design that forms a tighter closure when the roof is extended. A specially developed double-bulb, superior-memory seal provides protection from outside elements and insects, and sweeps off debris on room retraction.

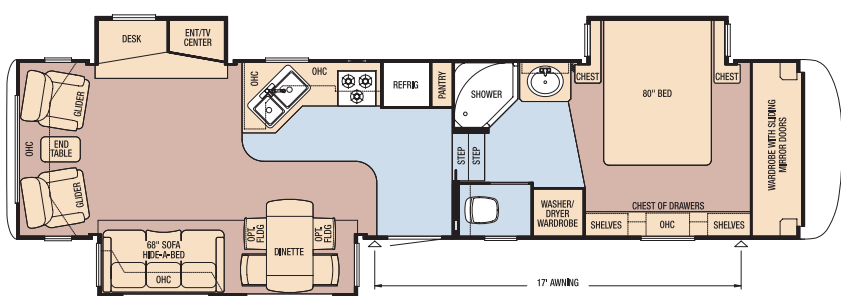
Model CPFW 36RBDs

Tire Size	215/75R17.5-H
GAWR	8,000
GVWR	17,500
App. Length	39' 9"
App. Height	12' 11"
Width	101"
App. Dry Weight	14,335
App. Hitch Weight	2,725
Fresh Water (gal.)	75
Grey (gal.)	84
Sewage Cap. (gal.)	84
App. Hitch Height	47"
Heat Cap. (BTU)	35,000



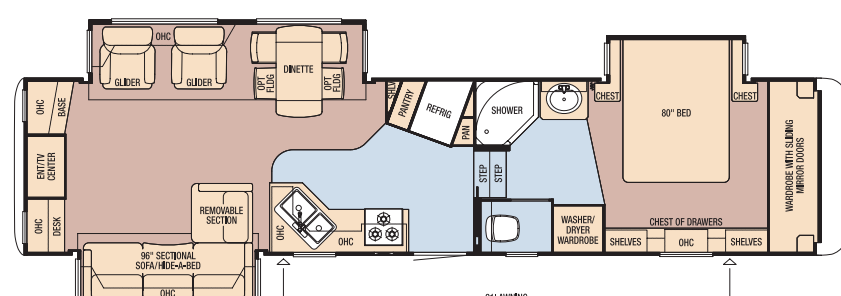
Model CPFW 36RLSK

Tire Size	235/85R16-G
GAWR	7,000
GVWR	16,100
App. Length	38' 11"
App. Height	12' 11"
Width	101"
App. Dry Weight	12,820
App. Hitch Weight	2,435
Fresh Water (gal.)	75
Grey (gal.)	84
Sewage Cap. (gal.)	42
App. Hitch Height	47"
Heat Cap. (BTU)	35,000



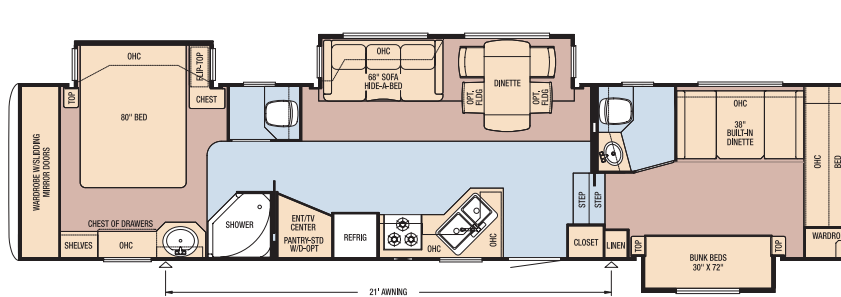
Model CPFW 37LSRE

Tire Size	235/85R16-G
GAWR	7,000
GVWR	16,600
App. Length	39' 11"
App. Height	12' 11"
Width	101"
App. Dry Weight	13,520
App. Hitch Weight	2,570
Fresh Water (gal.)	75
Grey (gal.)	84
Sewage Cap. (gal.)	42
App. Hitch Height	47"
Heat Cap. (BTU)	35,000



Model CPFW 39CKDB

Tire Size	215/75R17.5-H
GAWR	8,000
GVWR	17,500
App. Length	42' 0"
App. Height	12' 11"
Width	101"
App. Dry Weight	13,985
App. Hitch Weight	2,660
Fresh Water (gal.)	75
Grey (gal.)	84
Sewage Cap. (gal.)	84
App. Hitch Height	47"
Heat Cap. (BTU)	35,000



Optional Features

Exterior Graphics

Vinyl Graphics with Painted Skirt†

Air Conditioning and Heating

15M Penguin Central Air Conditioner

15M Penguin Central Air Conditioner with Heat Pump

Extra 13M Penguin Central Air Conditioner in Bedroom

Wire and Brace for Second Air Conditioner

Appliances and Accessories

19" LCD TV in Bedroom

One or Two 19" LCD TVs in Bunkroom*

Four Flipdown 10" LCD Monitors in Bunkroom with DVD Players and Game System*

Icemaker Added to Refrigerator*

Norcold® 10 cu. ft. Refrigerator

30" Convection Microwave and Three-Burner Cooktop

Pillow-Top Mattress†

Central Vacuum with Floor Port and Deluxe Tool Kit

Electric Fireplace*

DVD Player in Bedroom

Prep for Ground Tripod Satellite Dish with Phone and TV Jacks and Receptacle†

Roof-Mounted Satellite Prep

Washer/Dryer Prep

One-Piece Washer/Dryer*

Two-Piece Washer/Dryer*

12 Gal. Gas/Electric Water Heater with DSI

Cabinets and Furniture

Fall Spice Cabinetry

Built-In Booth Dinette

Island Kitchen Base Cabinet*

Kitchen Countertop Extension*

King Bed*

Two Fixed Dinette Chairs with In-Seat Storage

Two Folding Dinette Chairs with In-Seat Storage

Folding Desk Chair*

Electrical Features

7.0 kW Cummins Onan® Generator with Auto Changeover and Gen Prep

Gen Prep (Includes Energy Command and Fuel Tank with Gauge)

Solar Prep

Battery Disconnect Switch

Halogen Ceiling Lights Throughout†

Exterior Features

Bike Rack Carrier

Cargo Net in Pass-Through SuperStorage™

Pullout Storage Tray

Porch at Front Entrance Door

Rear Ladder†

Baggage Door Struts

Interior Features

Simulated Plank Floor in Kitchen and Foyer

Corian® Kitchen and Bathroom Countertops with Integrated Bowls

Vinyl Tile Floor in Kitchen, Bathroom and Foyer

Second Sink Cover†

Plumbing and Bath Features

Exterior Shower

Fiberglass Tub with Glass Door

12V Heat Pads for Holding Tanks
(N/A on CSA Units)

Construction Features

PolarPak R-19™ Insulation in Roof, Floor, Front and Rear End Caps†

Windows, Awnings and Vents

Carefree® Power Side Awning

Carefree® Summit Slideout Cover Package*

Standard Features

Air Conditioning and Heating

15M Brisk Air Central Air Conditioner

Two 30 lb. Propane Bottles with Auto Regulator

35,000 BTU Furnace with In-Floor Ducted Heat

Propane Leak Detector

Appliances and Accessories

10 Gal. Gas/Electric Water Heater with Direct-Spark Ignition

Microwave Oven

Entertainment Package:

26" or 32" LCD TV (per floorplan) and Surround Sound System with Recessed Speakers, DVD, CD, AM/FM Stereo Tuner and MP3 Adaptor

Norcold® 8 cu. ft. Refrigerator with Thermostat

Three-Burner Cooktop with Piezo Ignition

22" Oven

Flush-Mounted, Bi-Fold Cooktop Cover

Cable TV Connection with RG-6 Coax

Living Room Ceiling Fan

Corian® Knife Block behind Range

Hardwood Raised Six-Panel Refrigerator Front

Range Hood with Light and Fan

Phone Jack in Living Area

TV Antenna with Two Interior Jacks

Video Selector Switch

Two Bedroom Radio Speakers with On/Off Switch

Fire Extinguisher, Smoke Detector and Carbon Monoxide Detector

Cabinets and Furniture

Baltic Beech Cabinetry with Hardwood Raised-Panel Cathedral Overhead Cabinet Doors

Pre-Drilled and Screwed Cabinetry

Hide-A-Bed Sofa*

Glider/Recliner Chairs*

Bar Stools*

End Table with Metal Base*

Metal Drawer Guides

Freestanding Dinette Table with Lift-Top Storage

Two Fixed Dinette Chairs with In-Seat Storage

Laminate Kitchen and Bathroom Countertops with Hardwood Edging

Acrylic Kitchen and Bathroom Sinks

One Teflon® Sink Cover

SuperStorage™ Bedroom Wardrobe with Two Full-Width Shoe Racks and Top Shelf Cedar Lining

Laundry Hamper with Cedar Lining

Lifts on Bed Top

Kitchen Pantry with Adjustable Shelves*

Living Room Mirror

Decorative Bedroom Dresser Toe Kick

Queen Bed with Quilted Bedspread and Shams

Pullout Step-Stool with Storage in Bathroom Cabinet*

Windows, Awnings and Vents (cont.)

Create-A-Breeze Vent with Auto Lift in Kitchen and Bathroom

Double-Pane, Tinted Safety-Glass Windows

Clear Skylights in Bathroom, Kitchen and Living Room

Chassis Features

3" Non-Adjustable Lift Kit

MOR/ryde® Rubber Pin Box

Electric Over Hydraulic Disc Brakes

Polished Aluminum Wheels*

Rear 12V Power Twin Stabilizer Jacks

Electrical Features

110V Exterior Receptacle in Storage Compartment

12V Lighting Throughout

50 Amp Electrical Service with Detachable Cord

55 Amp Converter

Convenience Lights at Main Entry Door, Entry Door Step, Sewer Hook-Up, Hitch and Water Works Compartment

Decorative Light over Dinette

Dual Battery Box Compartment

Two Exterior Security Lights

Fluorescent Light over Kitchen Sink

Wall Reading Lights in Living Area Slideouts

Manually Operated Hold-to-Run Slideout Switch

Exterior Features

Vinyl Graphics

30" Gelcoated Radius Entry Door

Cargo Hook in Exterior Storage Area

Lighted Exterior Storage Compartments

Extendable Grab Handle at Entrance Door

Molded Gooseneck and Pass-Through Storage Door Wraps

Molded Fender Wells

Rear Skid Bars Prepped for Bike Rack Attachment

Main Entrance Door with Triple Step

Heated Pass-Through SuperStorage™ Basement Compartment

Dedicated Compartment in Basement for Utilities

Interior Features

Vinyl Ceiling Panels

Sculpted Carpet with High-Density Padding in Living Room and Bedroom

Vinyl Floor in Kitchen, Foyer and Bathroom

Day/Night Pleated Window Shades with Jabots in Living Room and Bedroom

Mini Blinds in Kitchen and Bathroom

Decorative Wall Border

Interior Assist Handle at Main Entry Door

Kitchen Wastebasket

Quilted Fabric Headboard

Molded Silverware Divider Tray

Hardwood Bullnose Trim on Steps

Décor Glass Accents in Living Room

Flat Panel Interior Passage Doors

Some features in our literature are optional. Colors and finishes are photographic representations. The actual materials may look different. Prices, specifications and floorplans are subject to change at Newmar's discretion, without prior notice or obligation. Please see your dealer for actual samples and specifications. ©2008 Newmar Corporation. Litho in USA. NEW21498 5/08-20M

Your Official Cypress Dealer:

Plumbing and Bath Features

Demand Water System with SHURflo® Pump

One-Piece Fiberglass Shower with Molded Seat and Glass Enclosure*

High-Rise Kitchen Faucet with Pullout Sprayer

Medicine Cabinet with Deluxe Lighting

Monitor Panel

Sewage Holding Tank Rinse

Sewage Hose Storage Tray

Lighted, Heated and Enclosed Exterior Water Works Compartment

Thetford™ Aqua Magic V Toilet with Spray Attachment

In-Line Water Filter for Entire Unit

Water Heater Bypass

Construction Features

12" I-Beam Custom-Built Frame

BriteTEK™ Roof with Walkable Decking and Radius Aluminum Roof Wrap

5/8" Structurwood® Floor Decking

Aluminum Framed Sidewalls, Roof, Front and Rear on 16" Centers

Gelcoated Exterior Sidewalls and Baggage Doors

Gelcoated Fiberglass End Caps

Fully Heated and Insulated Holding Tanks

Enclosed Underbelly with Sheets of Industrial Strength Black Plastic, Ducted Heat and Insulation

Composite R-Values:

Roof: R-13 Floor: R-12 Sidewalls: R-8

Windows, Awnings and Vents

Create-A-Breeze Vent with Auto Lift in Bathroom

Carefree® Fiesta Side Awning

Bathroom Window, Blinds and Valance

Dark Tinted Safety-Glass Windows

Shower Skylight*

Chassis Features

Shock Absorbers

16" G-Rated Tires*

17.5" H-Rated Tires*

Undermounted Spare Tire with Lift Kit

MOR/ryde® LRE Suspension

EZ Lube® Axles

Extended Pin Box

Power Front Jacks

Quick Release H/D Pin for Front Jack Legs

Rear Stabilizer Jacks (1 pair)

Polished Aluminum Wheels*

* Check with Dealership on Floorplan Availability

† Part of the Diamond Package



WHEN YOU KNOW THE DIFFERENCE™

NEWMAR CORPORATION

355 N DELAWARE ST

PO BOX 30

NAPPANEE IN 46550-0030

574-773-7791 Fax 574-773-2895

www.newmarcorp.com