



WHEN YOU KNOW THE DIFFERENCE™



CanyonStar

MOTORHOME

09





Canyon Star by Newmar.

- a. The Canyon Star Features Beautiful Cabinetry and Flexsteel® Furniture
- b. Norcold® 12 cu. ft. Refrigerator with Icemaker and 30" Convection Microwave Oven with Three-burner Cooktop (both optional)
- c. Optional Hidden-leaf Dinette Table with Four Chairs (Two Fixed, Two Folding)

Shown in 3510 Floorplan with Frost Décor and Baltic Beech Cabinetry.



- a. Bedroom Cabinets, Drawers and LCD TV with Optional DVD Player
 - b. Wardrobe with Mirrored Sliding Doors
 - c. Queen-sized Bed Features Tufted Mattress, Quilted Bedspread and Accent Pillow and Has Lifts on Bed Top for Accessing Storage Area
- Shown in 3510 Floorplan with Frost Décor and Baltic Beech Cabinetry.



Canyon Star
by Newmar.



Toy Hauler

The 2009 Canyon Star offers a floorplan featuring a garage for those who like to haul their favorite toys on their adventures. In addition to storing small vehicles, the garage is a versatile room that can also provide additional sleeping accommodations or give you another area to relax.

a. Optional Bunk Beds with Electric Bed Lift

b. Bottom Bunk Converts into a Sofa

c. Fueling Station

Shown in 3920 Floorplan with Crimson Exterior Paint Scheme.

d. Optional Screen Helps Keep Out Bugs

e. Garage Accommodates Toys





NEWMAR

Canyon Star

by Newmar.



a



b



- a. Cockpit Features Ultraleather Six-way Power Driver Seat and Rear-view Monitor System
- b. Full-Paint Masterpiece Finish™ in Smoke Exterior Paint Scheme
Shown in 3920 Toy Hauler Floorplan.



Step Up to the Next Level

With an array of standard features and optional amenities, and a new Toy Hauler floorplan for making life on the road even more fun, the 2009 Canyon Star brings you to the next level in motorhome comfort.



Canyon Star
by Newmar.

CEILINGS: R-VALUE = 16

- a. BriteTEK™ Roof
- b. 9mm Wood Decking
- c. Fiberglass Batten Insulation
- d. A/C Ducting
- e. Aluminum Roof Truss
- f. Kraft Paper Vapor Barrier
- g. 5/8" Bead Foam
- h. 3/16" Panel
- i. Padded Vinyl Overlay

WALLS: R-VALUE = 11

- j. 3/16" Plywood Interior Wall
- k. 5/8" Bead Foam
- l. Kraft Paper Vapor Barrier
- m. Fiberglass Batten Insulation
- n. 3/16" Plywood Exterior Wall
- o. Composite One-piece Gelcoat Exterior Sidewall
- p. 16" On-center Aluminum Framing with 3 1/2" Header

FLOORING: R-VALUE = 11

- q. Carpet/Tile
- r. Carpet Padding
- s. 5/8" Floor Decking
- t. Fiberglass Batten Insulation
- u. 2" x 3" Wood Framing
- v. Polyethylene Moisture Barrier
- w. Aluminum Ducting

- 1. 13.5M Central Air Conditioners (2)
- 2. One-piece Windshield
- 3. Stainless Steel Wheel Simulators (32' floorplans)
Coated Aluminum Wheels (34'-36' floorplans)
- 4. Tinted Safety-glass Windows
- 5. Top-hinged Baggage Doors



16" ON-CENTER FRAMING

Just like a fine site-built residential home, your Newmar home is framed 16 inches on center, which allows the best placement of outlets, switches and other components.

SIKAFLEX®

Used throughout Newmar construction, Sikaflex elastic adhesive is one of the strongest bonding agents on the market today. It also serves as a sealant against air and water. And it helps dampen both sound and vibration.

PROTECTED C-CHANNELS

To keep the electrical wiring that runs through holes in the aluminum-frame C-channels from chafing, each hole is ringed with a plastic grommet.

FULL-PAINT MASTERPIECE FINISH™

Newmar's Full-Paint Masterpiece Finish raises the exterior beauty and durability of our motorhomes to a whole new level. To obtain such rich-looking graphics, we use up to 16 gallons of paint on each unit, applying three coats each of primer, a base coat and color for graphics, and end with a final clear coat.

NEWMAR TOTAL COMFORT™ CENTRAL AIR CONDITIONING

Experience RV air conditioning just like that found in site-built homes. Newmar's Total Comfort Central Air Conditioning is actually two separate, fully ducted systems: one to distribute incoming cool air, the other to quickly and effectively remove warm air from every living area.

Newmar Express Limited Warranty

Every Canyon Star Motorhome is backed by Newmar's one-year limited warranty/unlimited miles. Ask your Newmar dealer for details.

The Limited Five-Year Structural Warranty

If any part of your Newmar recreational vehicle superstructure (which is the steel/aluminum structure of the sidewall, roof or frame) fails to perform properly within five years from the date of purchase, due to faulty workmanship or material supplied by Newmar, it will be repaired without charge for either parts or labor by Newmar. This structural warranty is available only to the original purchaser and is non-transferable.



a

b

c

Sofa

Dinette

Bedspread

Countertops

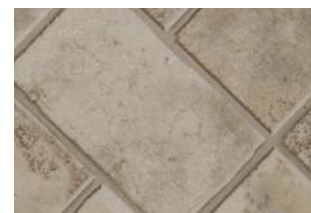
Carpet



Canyon Star

by Newmar.

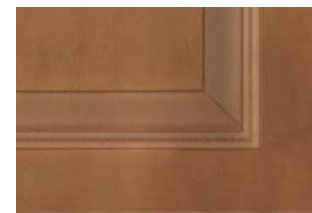
- a. Crimson Color Scheme
(top to bottom)
- b. Frost Color Scheme
(top to bottom)
- c. Smoke Color Scheme
(top to bottom)



Vinyl Flooring, Standard



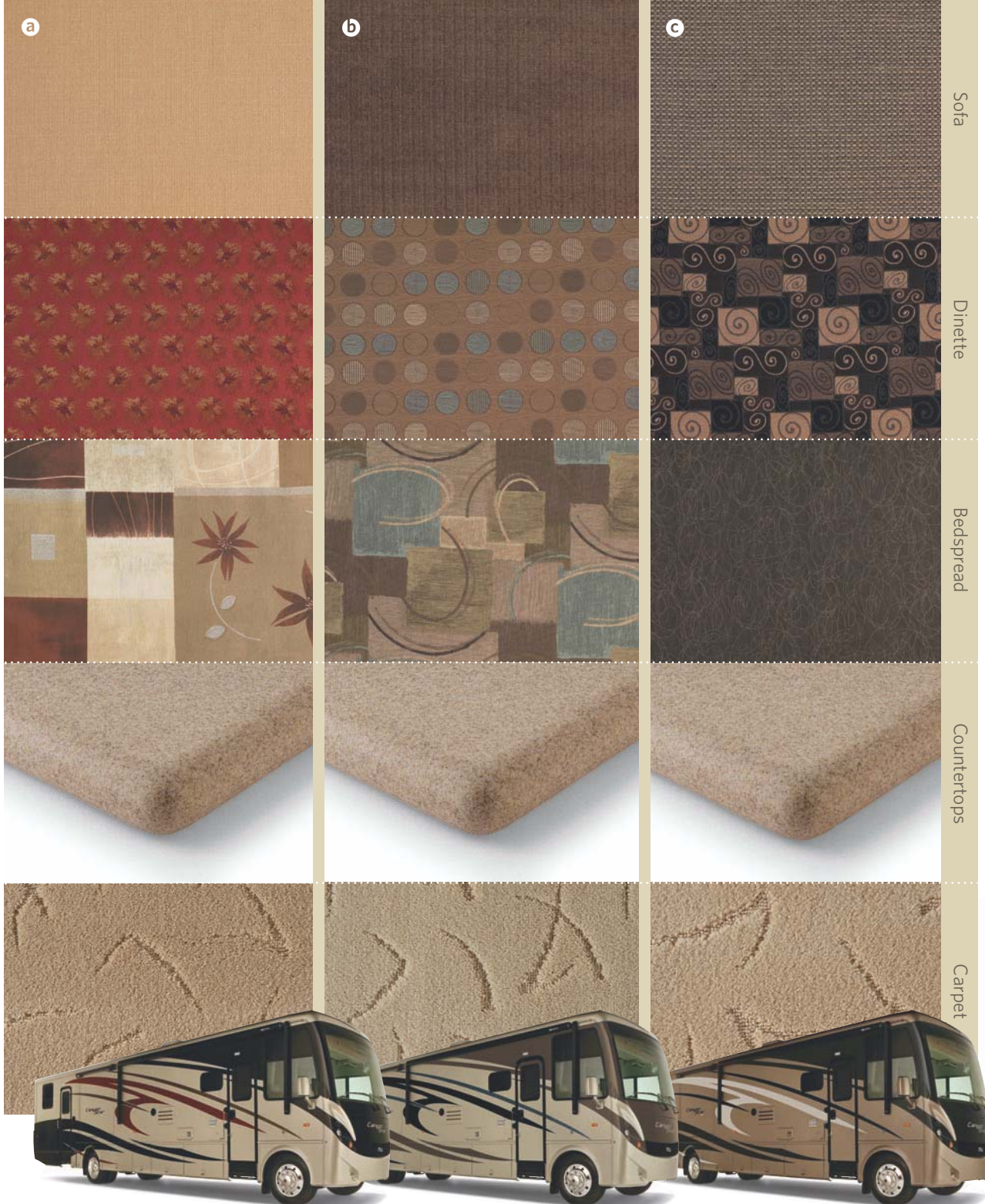
Baltic Beech Cabinetry, Standard
Optional Matching Simulated Plank
Flooring



Fall Spice Cabinetry, Optional
Optional Matching Simulated Plank
Flooring



Cabinet Hardware

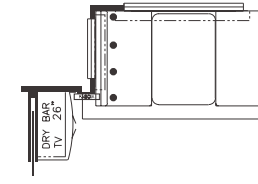
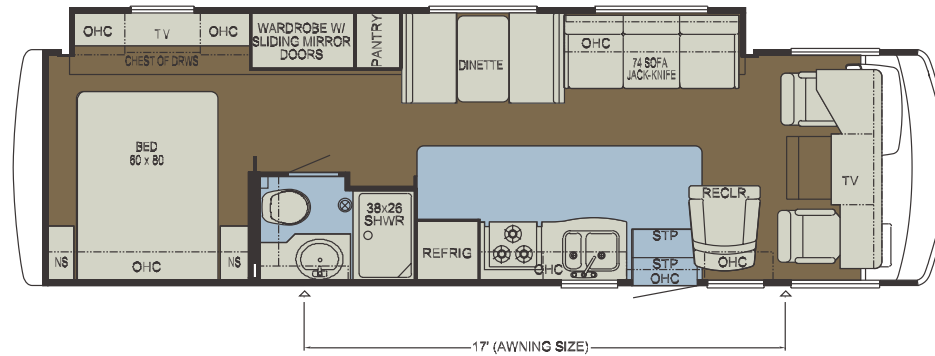


CSCA 3205

Length: 32' 11"

Width: 101.5"

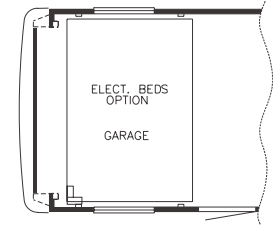
Option: K779



J363

Dry Bar with TV

3920



K060

Electric Bed Option

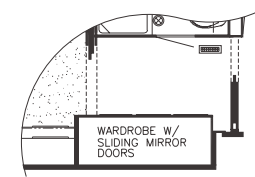
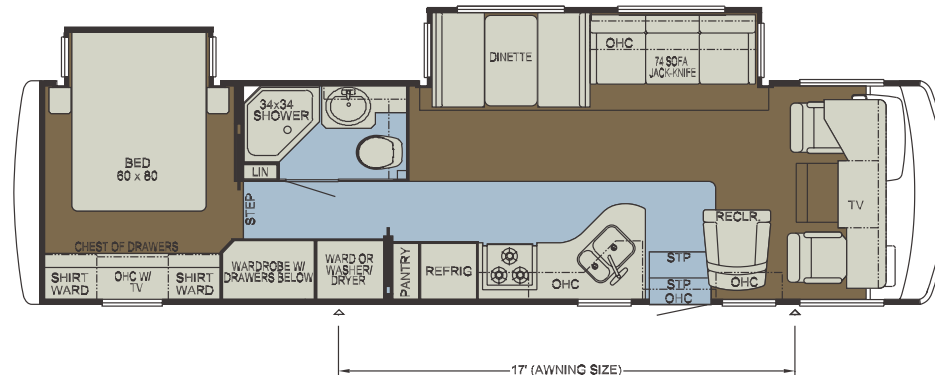
3920

CSCA 3410

Length: 34' 11"

Width: 101.5"

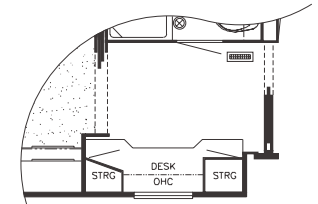
Options: K046,
K329_2, K546,
K777, K779



K040

Wardrobe with Sliding Mirror Doors

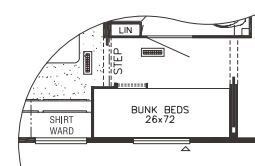
3510



K329

Desk

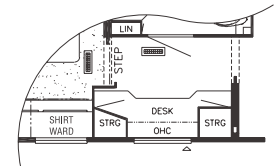
3510



K046

Bunk Beds

3410



K329_2

Desk

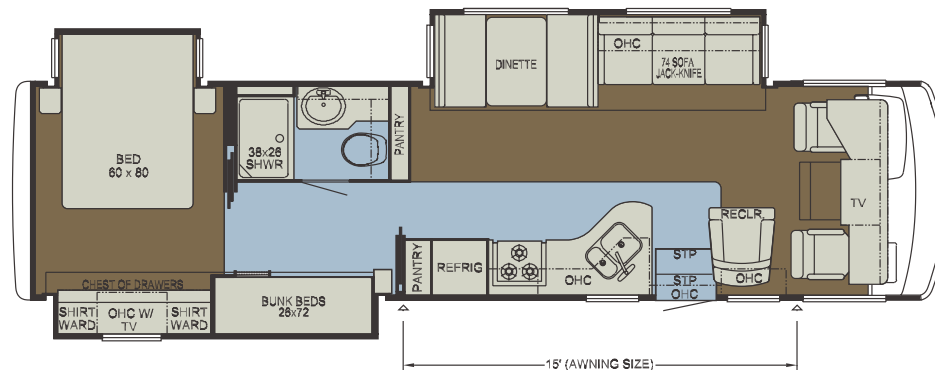
3410

CSCA 3510

Length: 35' 11"

Width: 101.5"

Options: K040,
K329, K546,
K777, K779



Canyon Star
by Newmar.



K546

Round Dinette

3410, 3510, 3641, 3647, 3920



K865

Entertainment Center

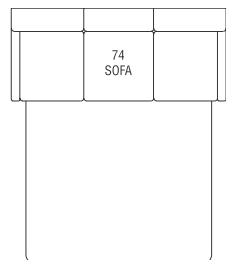
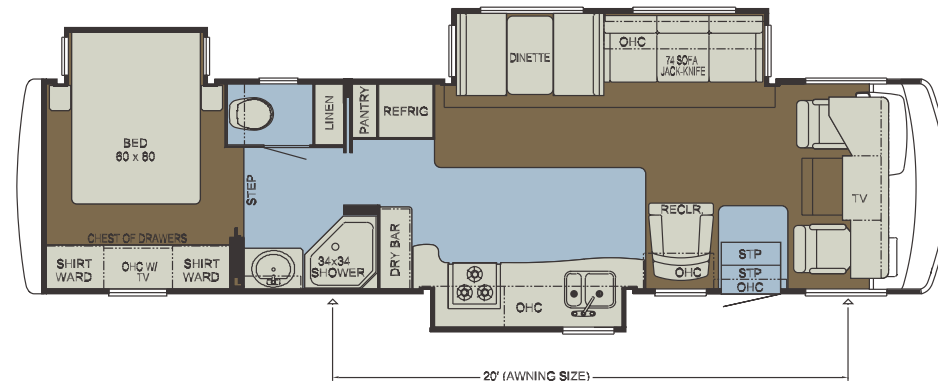
3647

CSCA 3641

Length: 36' 3"

Width: 101.5"

Options: K546,
K777, K779



K777

Hide-a-Bed Sofa

3410, 3510, 3641, 3647, 3920



K867

Desk with TV

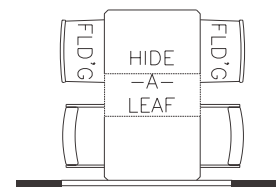
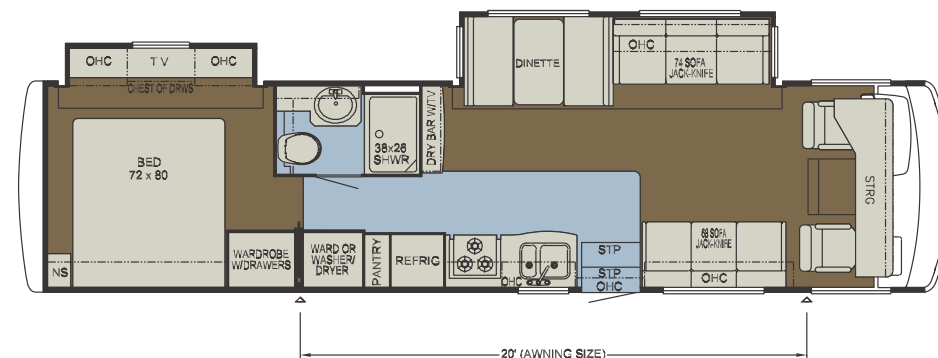
3647

CSCA 3647

Length: 36' 11"

Width: 101.5"

Options: K546, K777,
K779, K865, K867



K779

Freestanding Dinette
with Two Folding Chairs

3205, 3410, 3510, 3641, 3647,
3920



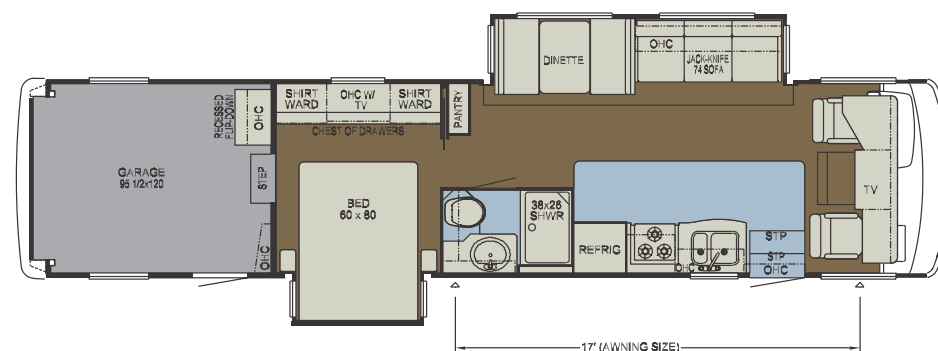
CSCA 3920

Length: 39' 5"

Width: 101.5"

Garage Length: 10'

Options: J363, K060,
K546, K777, K779



STANDARD FEATURES

CHASSIS FEATURES

- Ford® F-53 20,500 lb. Chassis (32' floorplans)
- Ford F-53 22,000 lb. Chassis (34'-36' floorplans)
- Ford F-53 26,000 lb. Chassis (Toyhauler)
- Electric Leveling Jacks with Automatic Control
- Cruise Control
- Tilt Steering Wheel
- Coated Aluminum Wheels (34'-36' Floorplans)

AIR CONDITIONING & HEATING

- Two 13.5M Brisk® Central Air Conditioners
- Propane Furnace with In-floor Ducted Heat
- Dash Heater and Air Conditioner
- Propane Leak Detector

APPLIANCES & ACCESSORIES

- Three-burner Recessed Range with Glass Oven Door & Piezo Ignition
- Polished Corian® Range Cover
- Norcold® 8 cu. ft. Refrigerator
- Black Panel Refrigerator Front
- Spacemaker® Microwave Oven
- 10 gal. Gas/Electric Water Heater Direct-spark Ignition
- 26" LCD TV in Living Area
- 32" LCD TV at Dry Bar*
- 19" LCD TV in Bedroom
- AM/FM Dash Radio with MP3 Adapter and CD Player
- DVD/VCR Player in Living Area
- AM/FM Radio, Single-disc CD Player with Two Exterior and Two Interior Speakers in the Garage*
- Rearview Monitor System, Black-and-White with Audio
- TV Antenna with Power Booster with Two Interior Jacks
- Satellite Prep
- Telephone Connection with Phone Jacks in Living and Dash Area
- Cable TV Connection with Rg6 Coax
- 10 Bc Fire Extinguisher, Carbon Monoxide and Smoke Detectors
- 10 Bc Fire Extinguisher in Garage*

CABINETS & FURNITURE

- Baltic Beech Raised-panel Cabinet Doors on Overhead Cabinets
- Booth Dinette with Seatbelts
- Polished Corian® Countertop in Kitchen with Undermounted Acrylic Sink and Flush Sink Covers
- Laminate Countertop in Bathroom with Porcelain Bowl* (Acrylic on Certain Floorplans)
- Residential-style Full-extension Ball-bearing Drawer Guides
- Kitchen Countertop Extension*
- Pullout Pantry*
- Flexsteel® Furniture
- Ultraleather Driver/Passenger Seats with Six-way Power Driver Seat
- Fabric Swivel Recliner*
- Wardrobe Along Hallway*
- Lifts on Bed Top to Access Storage Area*
- Tufted Mattress with Quilted Bedspread, Shams and Accent Pillows
- Stainless Steel Storage Cabinet in Garage*
- Pullout Step-stool with Storage in Bathroom Cabinet

ELECTRICAL FEATURES

- 5.5 kW Cummins Onan® Marquis Generator with Remote Switch and Automatic Changeover
- 50 Amp Electrical Service with Flexible Cord
- Two 12 Volt House Batteries
- Battery Disconnect Switch
- 110 Volt Exterior Receptacle
- 12 Volt Auxiliary Receptacle in Dash
- 5 Watt Solar Panel
- 55 Amp Converter

- Daytime Headlight System
- Emergency Start Switch
- Fluorescent Ceiling Lights in Living Area
- Incandescent Lighting in Bath, Bedroom and Under Overhead Cabinets
- Lighted Wardrobe
- Manually Operated Hold-to-Run Slideout Switch
- Energy Management System
- Exterior TV Jack
- ICC Light Flasher Switch
- Fog Lights

EXTERIOR FEATURES

- Full-Paint Masterpiece Finish™ with Front Protective Film
- One-piece Windshield
- Super Storage Below Rear Bedroom Floor*
- Convex Exterior Mirrors with Defrost and Remote Control
- Entrance Door with Automatic Double Step (Triple Step on 34'-39')
- Entrance Door with Automatic Triple Step in Garage*
- Fueling Station in Garage Area*
- Lighted Exterior Storage Compartments with Cargo Liner and Interior Master Switch
- 5,000 lb. Towing Hitch with Two Extra 14 Gauge Wires
- Acrylic Assist Handle at Entrance Door
- Undercoating
- Mud Flaps

INTERIOR FEATURES

- Padded Vinyl Ceiling
- Day/Night Pleated Window Shades and Lambrequins
- Mini-blinds in Kitchen, Bathroom and Garage Area
- Vinyl Floor in Kitchen and Bathroom
- Deluxe Carpeting with High-density Padding in Living Room and Bedroom
- Flat-panel Interior Passage Doors
- Interior Assist Handle at Main Entrance Door
- Shoe Storage Located in Entrance Step Compartment
- Wastebasket in Bathroom
- Wraparound Windshield Privacy Shade
- Diamond Tread Rubber Flooring in Garage*
- Recessed Flip-down Countertop in Garage*
- Tie-down Track in Garage*

PLUMBING & BATH FEATURES

- Demand Water System with SHURflo® Pump
- Sewage Holding-tank Rinse
- Water Heater Bypass System
- Thetford™ Aqua Magic Plus China Stool with Wood Seat and Spray Attachment
- Towel Bars and Tissue Holder
- Towel Ladder on Hinged Bathroom Door
- Tub/Shower Surround with Shower Door
- Exterior Shower
- Water Filter for Entire Unit
- Water Pump Switch in Bathroom and Kitchen
- Monitor Panel

WINDOWS, AWNINGS & VENTS

- Double-pane Tinted Safety-glass Windows
- Fantastic® Vent in Kitchen and Bathroom
- Skylight in Bathroom*
- A&E® 9000 Side Awning
- Slideout Covers
- Dash Fans (2)

OPTIONAL FEATURES

CHASSIS FEATURES

- Workhorse™ W-22 Chassis (34'-36' Floorplans)

AIR CONDITIONING & HEATING

- Two 13.5M Penguin™ Heat Pump Central Air Conditioners
- 13.5M Penguin™ Air Conditioner with Heat Strip in Garage*
- Auxiliary Heater in Bedroom

APPLIANCES & ACCESSORIES

- 30" Convection Microwave Oven with Three-burner Cooktop
- Norcold® 12 cu. ft. Four-door Refrigerator with Icemaker*
- Dometic® 12 cu. ft. Side-by-side Refrigerator with Icemaker
- Surround Sound Home Theater System in Living Area and DVD Player in Bedroom
- SIRIUS® Satellite Radio Capability (Does not include monthly subscription)
- 10" Flip-down LCD TV and DVD Player with Headphones at Each Bunk*
- 26" LCD TV at Dry Bar*
- 10-disc CD Player
- Washer/Dryer Prep
- One-piece Washer/Dryer
- Convenience Package: Hair Dryer, Two-way Radios and Electric Broom
- Automatic Satellite Dish without Receiver
- CB Antenna
- High-definition Wiring and Selector Switch
- Shop Vac in Garage*
- 19" LCD TV With Sony® DVD Player in Garage*

CABINETS & FURNITURE

- Fall Spice Cabinetry
- Ultraleather Swivel Recliner*
- Hidden-leaf Dinette Table with Four Chairs (Two Fixed, Two Folding)*
- Round Dinette Table with Four Chairs (Two Fixed, Two Folding)*
- Desk with LCD TV*
- Entertainment Center with LCD TV*
- Sofa in Place of Bedroom Recliners*
- Ultraleather Sofa in Place of Bedroom Recliners*
- Ultraleather Sofa*
- Ultraleather Hide-a-Bed*
- Two Ultraleather Bedroom Recliners*
- Desk in Place of Bunk Beds*
- Wardrobe in Place of Bunk Beds*
- Bunk Beds in Place of Wardrobe *
- Luxurious Pillowtop Mattress
- Comfortaire® Air Mattress (Main Bed)
- Bunk Beds with Electric Bed Lift in Garage*

ELECTRICAL FEATURES

- 600 Watt Inverter for Living Area or Bedroom TV
- Solar Prep

EXTERIOR FEATURES

- Rear Ladder

INTERIOR FEATURES

- Simulated Plank Floor in Kitchen, Living Area and Bathroom
- Two Wheel Chocks in Garage*

WINDOWS, AWNINGS & VENTS

- A&E® Weather Pro Side Awning
- Rear Window (Single-pane)
- Driver's Door with Power Window
- Bunk Windows*
- Screen for Rear Cargo Door*

*CHECK WITH DEALERSHIP ON FLOORPLAN AVAILABILITY



Canyon Star

by Newmar.

Floorplan Specifications

FLOORPLAN	APP. OVERALL LENGTH ¹	WIDTH	APP. OVERALL HEIGHT	INTERIOR WIDTH	INTERIOR HEIGHT	GREY	SEWAGE	WATER	PROPANE	FURNACE	WATER HEATER
CSCA 3205	32' 11"	101.5"	12' 8"	95.5"	84"	60 gal.	40 gal.	75 gal.	25 gal.	34,000 Btu	10 gal.
CSCA 3410	34' 11"	101.5"	12' 10"	95.5"	84"	60 gal.	40 gal.	75 gal.	25 gal.	40,000 Btu	10 gal.
CSCA 3510	35' 11"	101.5"	12' 10"	95.5"	84"	60 gal.	40 gal.	75 gal.	25 gal.	40,000 Btu	10 gal.
CSCA 3641	36' 3"	101.5"	12' 10"	95.5"	84"	60 gal.	40 gal.	75 gal.	25 gal.	40,000 Btu	10 gal.
CSCA 3647	36' 11"	101.5"	12' 10"	95.5"	84"	60 gal.	40 gal.	75 gal.	25 gal.	40,000 Btu	10 gal.
CSCA 3920	39' 5"	101.5"	12' 11"	95.5"	84"	60 gal.	40 gal.	75 gal.	25 gal.	40,000 Btu	10 gal.

¹ Lengths do not include the rear ladder.

² Specifications are supplied by chassis manufacturer.

GAWR: Gross Axle Weight Rating is the maximum permissible weight for an axle.

GVWR: Gross Vehicle Weight Rating is the maximum permissible weight of a fully loaded motorhome.

GCWR: Gross Combination Weight Rating is the value specified by the manufacturer of the vehicle as the maximum allowable loaded weight of this motorhome and any towed trailer or towed vehicle.

UVW: Unloaded Vehicle Weight is the weight of this motorhome as built at the factory with full fuel, engine oil and coolants. The UVW does not include cargo, fresh water, LP gas or dealer-installed accessories.

NCC: Net Carrying Capacity is the maximum weight of all occupants, including the driver, personal belongings, food, fresh water, waste water, LP gas, tools, tongue weight of towed vehicle, dealer-installed accessories, etc., that can be carried by the motorhome.

Ford® Chassis Information

FLOORPLAN	ENGINE HP	AXLE RATIO	FUEL CAP.	WHEELBASE	FRONT GAWR ²	REAR GAWR ²	GVWR ²	GCWR ²	APP. UVW	APP. NCC
CSCA 3205	362	5.38	75 gal.	208"	7,500 lb.	13,500 lb.	20,500 lb.	26,000 lb.	17,287 lb.	3,213 lb.
CSCA 3410	362	5.38	75 gal.	216"	7,500 lb.	14,500 lb.	22,000 lb.	26,000 lb.	18,208 lb.	3,792 lb.
CSCA 3510	362	5.38	75 gal.	228"	7,500 lb.	14,500 lb.	22,000 lb.	26,000 lb.	19,125 lb.	2,875 lb.
CSCA 3641	362	5.38	75 gal.	234"	7,500 lb.	14,500 lb.	22,000 lb.	26,000 lb.	19,021 lb.	2,979 lb.
CSCA 3647	362	5.38	75 gal.	242"	7,500 lb.	14,500 lb.	22,000 lb.	26,000 lb.	18,725 lb.	3,275 lb.
CSCA 3920	362	5.38	75 gal.	260"	9,000 lb.	17,500 lb.	26,000 lb.	30,000 lb.	19,780 lb.	6,220 lb.

Workhorse™ Chassis Information

FLOORPLAN	ENGINE HP	AXLE RATIO	FUEL CAP.	WHEELBASE	FRONT GAWR ²	REAR GAWR ²	GVWR ²	GCWR ²	APP. UVW	APP. NCC
CSCA 3410	340	5.86	75 gal.	216"	8,000 lb.	14,500 lb.	22,000 lb.	26,000 lb.	18,473 lb.	3,527 lb.
CSCA 3510	340	5.86	75 gal.	228"	8,000 lb.	14,500 lb.	22,000 lb.	26,000 lb.	19,285 lb.	2,715 lb.
CSCA 3641	340	5.86	75 gal.	234"	8,000 lb.	14,500 lb.	22,000 lb.	26,000 lb.	19,227 lb.	2,773 lb.
CSCA 3647	340	5.86	75 gal.	242"	8,000 lb.	14,500 lb.	22,000 lb.	26,000 lb.	18,932 lb.	3,068 lb.



The Newmar Factory Tour

We'd love to have you visit our state-of-the-art production facility in Nappanee, Indiana. Factory tours are given Monday through Friday at 10 a.m. and 1 p.m. Eastern Standard Time. Please arrive 15 minutes before the hour, and check in at the tour area located in Building Nine on Cheyenne Street. No open-toed sandals can be worn, and children under the age of eight are not allowed to take the tour. For more information, please call 1-800-860-0086.

The Newmar Difference

Over the past 40 years, Newmar has created a heritage devoted to quality, innovation, luxury and Amish craftsmanship. Newmar products incorporate sound construction principles, such as the leveled and squared chassis, sub-floor structure that's integrated and welded to the chassis rail and insulation that makes them easy to heat and cool. We use a real-world wiring system and we test and weigh each and every vehicle to make sure it meets our high expectations. We also provide custom-built touches, like our hand-crafted cabinetry. With Newmar, you get the ultimate in luxury from a company that's dedicated to its roots and stands for the utmost in quality.



WHEN YOU KNOW THE DIFFERENCE™

*Canyon
Star*

2009 Motorhome

NEWMAR CORPORATION • 355 N DELAWARE ST • PO BOX 30 • NAPPANEE IN 46550-0030
574-773-7791 • FAX 574-773-2895 • www.newmarcorp.com

Some features shown in our literature are optional. Colors and finishes are photographic representations. The actual materials may look different. Prices, specifications and floorplans are subject to change at Newmar's discretion, without prior notice or obligation. Please see your dealer for actual samples and specifications. © 2008 Newmar Corporation. Printed in the U.S.A. (03/08)