



WHEN YOU KNOW THE DIFFERENCE™



GrandStar

MOTORHOME

09





Grand Star

by Newmar.

A Grand Adventure Awaits

The road ahead is never daunting when traveling in the comfort and confidence of the 2009 Grand Star. Built to Newmar's exacting standards, this dependable motorhome gives you plenty of options, including your choice of gas or diesel. You can select a gas model or a diesel model equipped with a FRED® chassis—both featuring many standard amenities that add extra convenience and stocked with a host of features you'd expect to find in a diesel motorhome. No matter which you choose, with the Grand Star, your journeys will live up to all your grand expectations.





Grand Star

by Newmar.

- a. Optional Ultraleather Hide-a-Bed Sofa
- b. Optional Home Theater System with Optional Pre-programmed Universal Remote Control
- c. Living Area with Optional Ultraleather Sofas

Shown in 3752 Floorplan with Chambray Décor and Ginger Maple Hardwood Cabinetry.









- a. Kitchen with Polished Corian® Countertops
 - b. Norcold® Four-door Refrigerator with Icemaker (optional)
 - c. Optional Hidden-leaf Dinette Table with Two Fixed and Two Folding Chairs
- Shown in 3752 Floorplan with Chambray Décor and Ginger Maple Hardwood Cabinetry.



Grand Star
by Newmar.



a. Bedroom 19" LCD Color TV
b. Optional Queen-sized Comfortaire® Mattress
Shown in 3752 Floorplan with Chambray Décor and Ginger Maple Hardwood Cabinetry.



Grand Star
by Newmar.







- a. Pullout Step-stool with Storage Area Under the Bathroom Sink
- b. In the Grand Star's Dash Area, a Tilt Steering Wheel and Cruise Control Put Comfort Easily Within the Driver's Reach
- c. Pass-through Storage Allows Access from Either Side
- d. Full-Paint Masterpiece Finish™ with Front Protective Film in Midnight Exterior Paint Scheme Shown in 3752 Floorplan with Chambray Décor and Ginger Maple Hardwood Cabinetry.

a

b

c

Sofa

Dinette

Bedspread

Countertops

Carpet



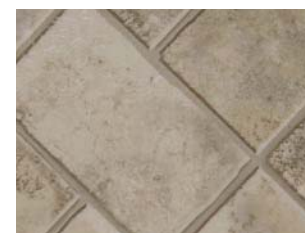
Grand Star

by Newmar.

- a. Chambray Color Scheme (top to bottom)
- b. Jute Color Scheme (top to bottom)
- c. Midnight Color Scheme (top to bottom)



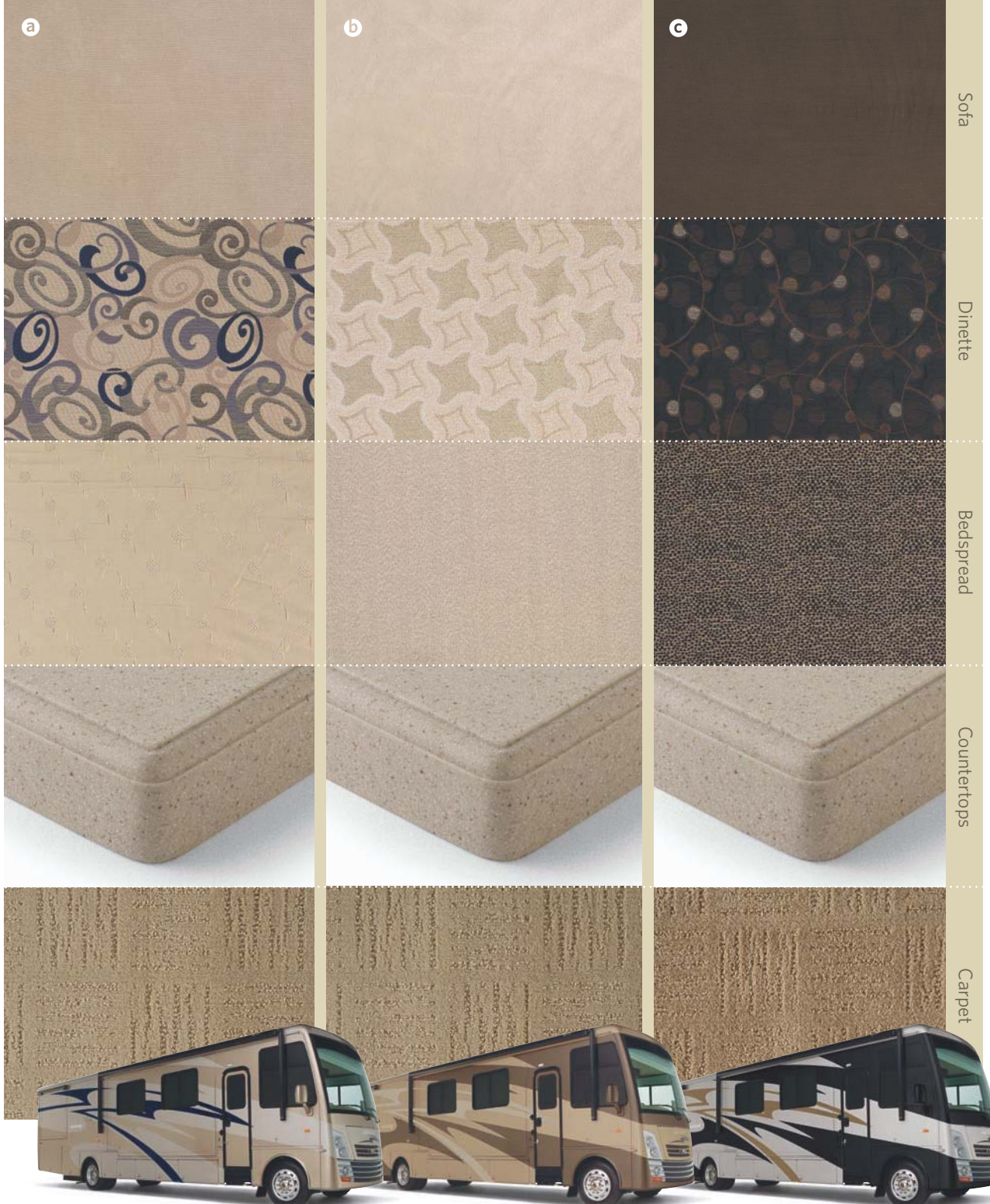
Cabinet Hardware



Vinyl Flooring, Standard



Ceramic Tile Flooring, Optional

Baltic Beech Cabinetry, Standard
Optional Matching Simulated Plank
FlooringFall Spice Cabinetry, Optional
Optional Matching Simulated Plank
FlooringGinger Maple Hardwood Cabinetry, Optional
Optional Matching Simulated Plank
Flooring

CEILINGS: R-VALUE = 16

- a. BriteTEK™ Roof
- b. 9mm Wood Decking
- c. Fiberglass Batten Insulation
- d. A/C Ducting
- e. Aluminum Roof Truss
- f. Kraft Paper Vapor Barrier
- g. 5/8" Bead Foam
- h. 3/16" Panel
- i. Padded Vinyl Overlay

WALLS: R-VALUE = 11

- j. 3/16" Plywood Interior Wall
- k. 5/8" Bead Foam
- l. Kraft Paper Vapor Barrier
- m. Fiberglass Batten Insulation
- n. 3/16" Plywood Exterior Wall
- o. Composite One-piece Gelcoat Exterior Sidewall
- p. 16" On-center Aluminum Framing with 3 1/2" Header

FLOORING: R-VALUE = 11

- q. Carpet/Tile
- r. Carpet Padding
- s. 5/8" Floor Decking
- t. Fiberglass Batten Insulation
- u. 2" x 3" Wood Framing
- v. Polyethylene Moisture Barrier
- w. Aluminum Ducting



- 1. 13.5M Central Air Conditioners with Heat Pumps (2)
- 2. One-piece Bonded Windshield
- 3. Coated Aluminum Wheels
- 4. Double-pane Tinted Safety-glass Windows
- 5. Side-hinged Baggage Doors, between Axles

16" ON-CENTER FRAMING

Just like a fine site-built residential home, your Newmar home is framed 16 inches on center, which allows the best placement of outlets, switches and other components.

SIKAFLEX®

Used throughout Newmar construction, Sikaflex elastic adhesive is one of the strongest bonding agents on the market today. It also serves as a sealant against air and water. And it helps dampen both sound and vibration.

PROTECTED C-CHANNELS

To keep the electrical wiring that runs through holes in the aluminum-frame C-channels from chafing, each hole is ringed with a plastic grommet.

FULL-PAINT MASTERPIECE FINISH™

Newmar's Full-Paint Masterpiece Finish raises the exterior beauty and durability of our motorhomes to a whole new level. To obtain such rich-looking graphics, we use up to 16 gallons of paint on each unit, applying three coats each of primer, a base coat and color for graphics, and end with a final clear coat.

NEWMAR TOTAL COMFORT™ CENTRAL AIR CONDITIONING

Experience RV air conditioning just like that found in site-built homes. Newmar's Total Comfort Central Air Conditioning is actually two separate, fully ducted systems: one to distribute incoming cool air, the other to quickly and effectively remove warm air from every living area.

NEWMAR EXPRESS LIMITED WARRANTY

Every Grand Star Motorhome is backed by Newmar's one-year limited warranty/unlimited miles. Ask your Newmar dealer for details.

THE LIMITED FIVE-YEAR STRUCTURAL WARRANTY

If any part of your Newmar recreational vehicle superstructure (which is the steel/aluminum structure of the sidewall, roof or frame) fails to perform properly within five years from the date of purchase, due to faulty workmanship or material supplied by Newmar, it will be repaired without charge for either parts or labor by Newmar. This structural warranty is available only to the original purchaser and is non-transferable.

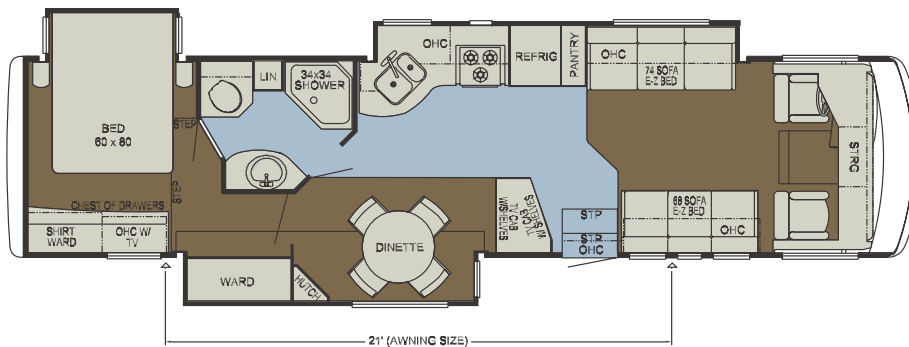


Grand Star

by Newmar.

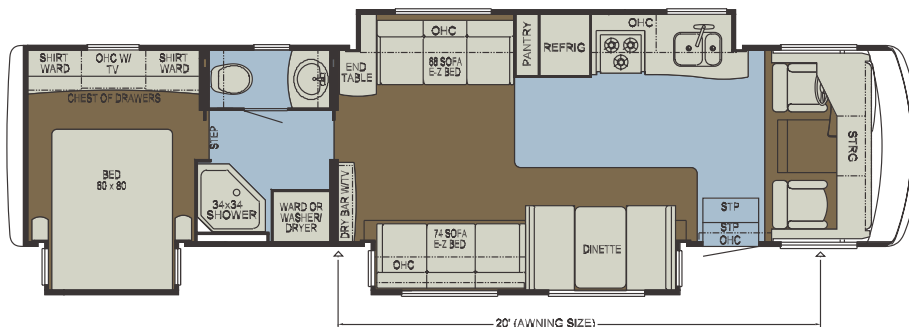
GSCA 3750

Length: 37' 11"
Width: 101.5"
Option: K330



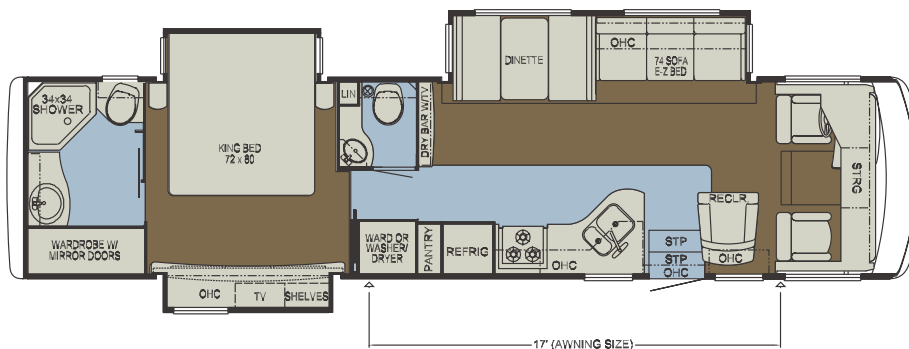
GSCA 3752

Length: 37' 11"
Width: 101.5"
Option: K546, K672, K779, K863, K865



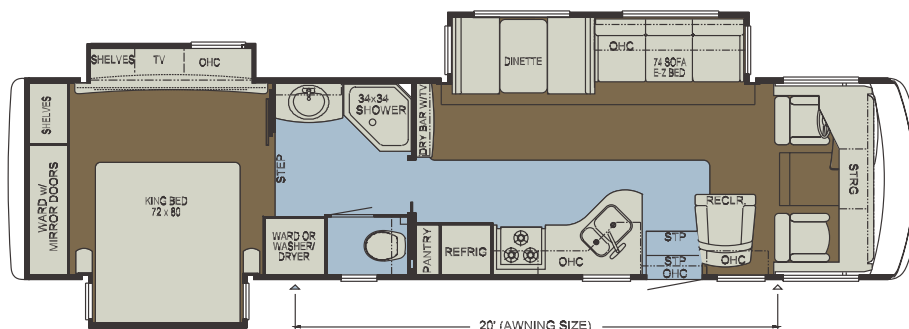
GSCA 3753

Length: 37' 11"
Width: 101.5"
Option: K546, K672, K779



GSCA 3754

Length: 37' 11"
Width: 101.5"
Option: K546, K672, K779

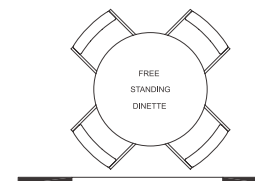


Carpet Vinyl Flooring



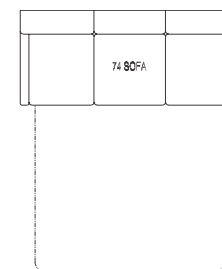
K330

Desk ILO 68" Sofa
3750



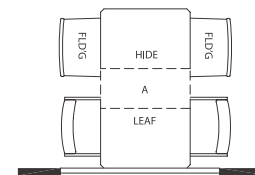
K546

Round Dinette
3752, 3753, 3754



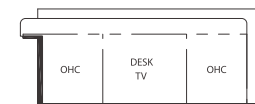
K672

74" Hide-a-Bed Sofa
3752, 3753, 3754



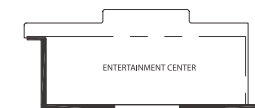
K779

Freestanding Dinette
with Two Folding Chairs
3752, 3753, 3754



K863

Desk with TV
3752



K865

Entertainment Center
3752

STANDARD FEATURES

CHASSIS FEATURES

- Ford® F-53 24,000 lb. Chassis
- Electric Leveling Jacks with Automatic Control
- Cruise Control
- Tilt Steering Wheel
- Coated Aluminum Wheels

AIR CONDITIONING & HEATING

- Two 13.5M Penguin™ Central Air Conditioners with Heat Pumps
- Propane Furnace with In-floor Ducted Heat
- Dash Heater and High-output Air Conditioner
- Propane Leak Detector

APPLIANCES & ACCESSORIES

- Stainless Steel Three-burner Recessed Range with Glass Oven Door & Piezo Ignition
- Polished Corian® Range Cover
- Dometic® 9 cu. ft. Refrigerator
- Stainless Steel Look Refrigerator Front
- Stainless Steel Microwave
- 10 gal. Gas/Electric Water Heater Direct-spark Ignition
- 32" LCD TV in Living Area* (26" LCD TV Certain Floorplans)
- 19" LCD TV in Dinette Area*
- 19" LCD TV in Bedroom
- AM/FM Dash Radio with MP3 Adapter and CD Player
- DVD/VCR Player
- Rearview Monitor System, Black and White with Audio
- TV Antenna with Power Booster with Two Interior Jacks
- Satellite Prep
- Telephone Connection with Phone Jacks in Living and Dash Area
- Cable TV Connection with Rg6 Coax
- 10 Bc Fire Extinguisher, Carbon Monoxide and Smoke Detectors

CABINETS & FURNITURE

- Baltic Beech Cabinetry with Raised-panel Cabinet Doors
- Hardwood Built-in Booth Dinette with Seatbelts*
- Polished Corian® Countertop in Kitchen with Undermounted Stainless Steel Sink and Flush Sink Covers
- Corian® Countertop in Bathroom with Porcelain Bowl* (Acrylic on Certain Floorplans)
- Residential-style Full-extension Ball-bearing Drawer Guides
- Knife Hinges on Cabinet Doors
- Kitchen Countertop Extension*
- Pullout Pantry with Adjustable Shelves*
- Flexsteel® Furniture
- Fabric Swivel Recliner*
- Ultraleather Driver/Passenger Seats with Six-way Power Driver's Seat
- Lifts on Bed Top to Access Storage Area*
- Tufted Mattress with Quilted Bedspread, Shams and Accent Pillows
- Molded Silverware Tray
- Pullout Step-stool With Storage in Bathroom Cabinet

ELECTRICAL FEATURES

- 5.5 kW Cummins Onan® Marquis Generator with Remote Switch with Automatic Changeover
- 50 Amp Electrical Service with Flexible Cord
- Two 12 Volt House Batteries
- Battery Disconnect Switch
- 110 Volt Exterior Receptacle
- 5 Watt Solar Panel

- 55 Amp Converter
- Daytime Headlight System
- Emergency Start Switch
- Fluorescent Ceiling Lights in Living Area
- Incandescent Lighting in Bath, Bedroom and Under Overhead Cabinets
- Lighted Wardrobes
- Manually Operated Hold-to-Run Slideout Switch
- 12 Volt Auxiliary Receptacles on Dashboard
- Interior Courtesy Lights
- Energy Management System
- Exterior TV Jack
- ICC Light Flasher Switch
- Fog Lights

EXTERIOR FEATURES

- Full-Paint Masterpiece Finish™ with Front Protective Film
- One-piece Bonded Windshield
- Super Storage Below Rear Bedroom Floor*
- Convex Exterior Mirrors with Remote Control, Defrost
- Entrance Door with Automatic Triple Step
- Lighted Exterior Storage Compartments with Cargo Liner, Controlled by Interior Master Switch
- Side-hinged Baggage Doors (Between Axles)
- 6,000 lb. Towing Hitch with Two Extra 14 Gauge Wires
- Acrylic Assist Handle at Entrance Door
- Undercoating
- Mud Flaps

INTERIOR FEATURES

- Padded Vinyl Ceiling
- Day/Night Pleated Window Shades and Lambrequins
- Mini Blinds in Kitchen and Bathroom
- Vinyl Floor in Kitchen and Bathroom
- Deluxe Carpeting with High-density Padding in Living Room and Bedroom
- Flat Panel Interior Passage Doors
- Hardwood/Fabric Fascia on Living Area Slideout
- Interior Assist Handle at Main Entrance Door
- Shoe Storage Located in Entrance Step Compartment
- Wastebasket in Bathroom
- Vertical Drop-down Windshield Area Privacy Shade

PLUMBING & BATH FEATURES

- Demand Water System with SHURflo® Pump
- Sewage Holding-tank Rinse
- Water Heater Bypass System
- Thetford™ Aqua Magic Plus China Stool with Wood Seat and Spray Attachment
- Towel Ladder, on Hinged Bathroom Door Only
- Towel Ring in Bathroom
- Tub/Shower Surround with Shower Door
- Monitor Panel
- Water Pump Switches Located in Bathroom and Kitchen
- Exterior Shower
- Water Filter for Entire Unit

WINDOWS, AWNINGS & VENTS

- Double-pane Tinted Safety-glass Windows
- Fan-Tastic® Vent in Kitchen and Bath Area
- Skylight in Bathroom*
- A&E® Weather Pro Power Side Awning
- A&E Slideout Awning Covers
- Cockpit Overhead Ventilation System

OPTIONAL FEATURES

CHASSIS FEATURES

- Freightliner® FRED Chassis, 340hp with 6.0kW Cummins Onan® Diesel Generator
- Workhorse™ W-24 Chassis

AIR CONDITIONING & HEATING

- Auxiliary Heater in Bedroom
- Hydronic Zone Propane Heating System

APPLIANCES & ACCESSORIES

- 30" Stainless Steel Convection Microwave Oven with Three-burner Cooktop
- Dometic® 12 cu. ft. Side-by-side Refrigerator with Icemaker
- Norcold® 12 cu. ft. Four-door Refrigerator* with Icemaker
- One-piece Washer/Dryer*
- One-piece Washer/Dryer Prep*
- SIRIUS® Satellite Radio Capability (Does not include monthly subscription)
- Surround Sound Home Theater System in Living Area and DVD Player in Bedroom
- 10-disc CD Player
- Automatic Satellite Dish without Receiver
- Semi-automatic Satellite Dish without Receiver
- Sideview Cameras
- Convenience Package: Hair Dryer, Two-way Radios and Electric Broom
- CB Antenna
- High Definition Wiring and Selector Switch
- Pre-programmed Universal Remote Control

CABINETS & FURNITURE

- Fall Spice Cabinetry
- Ginger Maple Hardwood Cabinetry
- Ultraleather Swivel Recliner*
- Ultraleather Sofa*
- Ultraleather Hide-a-Bed Sofa with Air Mattress*
- Free-standing Dinette Table with Two Fixed and Two Folding Chairs*
- Round Dinette Table with Two Fixed and Two Folding Chairs*
- Desk with Fixed Chair*
- Desk with LCD TV*
- Entertainment Center with LCD TV*
- Luxurious Pillow Top Mattress
- Comfortaire Air Mattress (Main Bed)

ELECTRICAL FEATURES

- 600 Watt Inverter for Living Area or Bedroom TV
- Solar Prep

EXTERIOR FEATURES

- Rear Ladder

INTERIOR FEATURES

- Ceramic Tile in Kitchen and Bathroom
- Simulated Plank Floor in Kitchen and Bathroom
- Power-activated Sun Visors

WINDOWS, AWNINGS & VENTS

- Driver's Door with Power Window
- Rear Window (Single Pane)*

*CHECK WITH DEALERSHIP ON FLOORPLAN AVAILABILITY



Grand Star

by Newmar.

Floorplan Specifications

FLOORPLAN	APP. OVERALL LENGTH ¹	WIDTH	APP. OVERALL HEIGHT	INTERIOR WIDTH	INTERIOR HEIGHT	GREY	SEWAGE	WATER	PROPANE	FURNACE	WATER HEATER
GSCA 3750	37' 11"	101.5"	12' 10"	95.5"	84"	60 gal.	40 gal.	75 gal.	25 gal.	40 ,000 Btu	10 gal.
GSCA 3752	37' 11"	101.5"	12' 10"	95.5"	84"	60 gal.	40 gal.	75 gal.	25 gal.	40,000 Btu	10 gal.
GSCA 3753	37' 11"	101.5"	12' 10"	95.5"	84"	60 gal.	40 gal.	75 gal.	25 gal.	40,000 Btu	10 gal.
GSCA 3754	37' 11"	101.5"	12' 10"	95.5"	84"	60 gal.	40 gal.	75 gal.	25 gal.	40,000 Btu	10 gal.

¹ Lengths do not include the rear ladder.

² Specifications are supplied by chassis manufacturer.

GAWR: Gross Axle Weight Rating is the maximum permissible weight for an axle.

GVWR: Gross Vehicle Weight Rating is the maximum permissible weight of a fully loaded motorhome.

GCWR: Gross Combination Weight Rating is the value specified by the manufacturer of the vehicle as the maximum allowable loaded weight of this motorhome and any towed trailer or towed vehicle.

UVW: Unloaded Vehicle Weight is the weight of this motorhome as built at the factory with full fuel, engine oil and coolants. The UVW does not include cargo, fresh water, LP gas or dealer-installed accessories.

NCC: Net Carrying Capacity is the maximum weight of all occupants, including the driver, personal belongings, food, fresh water, waste water, LP gas, tools, tongue weight of towed vehicle, dealer-installed accessories, etc., that can be carried by the motorhome.

Ford® Chassis Information

FLOORPLAN	ENGINE HP	AXLE RATIO	FUEL CAP.	WHEELBASE	FRONT GAWR ²	REAR GAWR ²	GVWR ²	GCWR ²	APP. UVW	APP. NCC
GSCA 3750	362	5.38	75 gal.	260"	9,000 lb.	15,500 lb.	24,000 lb.	30,000 lb.	20,508 lb.	3,492 lb.
GSCA 3752	362	5.38	75 gal.	260"	9,000 lb.	15,500 lb.	24,000 lb.	30,000 lb.	20,748 lb.	3,252 lb.
GSCA 3753	362	5.38	75 gal.	246"	9,000 lb.	15,500 lb.	24,000 lb.	30,000 lb.	20,345 lb.	3,655 lb.
GSCA 3754	362	5.38	75 gal.	250"	9,000 lb.	15,500 lb.	24,000 lb.	30,000 lb.	20,285 lb.	3,715 lb.

Freightliner® Chassis Information

FLOORPLAN	ENGINE HP	AXLE RATIO	FUEL CAP.	WHEELBASE	FRONT GAWR ²	REAR GAWR ²	GVWR ²	GCWR ²	APP. UVW	APP. NCC
GSCA 3750	340	4.78	80 gal.	260"	10,000 lb.	17,000 lb.	27,000 lb.	30,000 lb.	21,699 lb.	5,301 lb.
GSCA 3752	340	4.78	80 gal.	260"	10,000 lb.	17,000 lb.	27,000 lb.	30,000 lb.	21,769 lb.	5,231 lb.
GSCA 3753	340	4.78	80 gal.	246"	10,000 lb.	17,000 lb.	27,000 lb.	30,000 lb.	21,536 lb.	5,464 lb.
GSCA 3754	340	4.78	80 gal.	250"	10,000 lb.	17,000 lb.	27,000 lb.	30,000 lb.	21,476 lb.	5,524 lb.

Workhorse™ Chassis Information

FLOORPLAN	ENGINE HP	AXLE RATIO	FUEL CAP.	WHEELBASE	FRONT GAWR ²	REAR GAWR ²	GVWR ²	GCWR ²	APP. UVW	APP. NCC
GSCA 3750	340	5.86	75 gal.	260"	9,000 lb.	15,500 lb.	24,000 lb.	30,000 lb.	20,264 lb.	3,736 lb.
GSCA 3752	340	5.86	75 gal.	260"	9,000 lb.	15,500 lb.	24,000 lb.	30,000 lb.	20,504 lb.	3,496 lb.
GSCA 3753	340	5.86	75 gal.	246"	9,000 lb.	15,500 lb.	24,000 lb.	30,000 lb.	20,101 lb.	3,899 lb.
GSCA 3754	340	5.86	75 gal.	250"	9,000 lb.	15,500 lb.	24,000 lb.	30,000 lb.	20,041 lb.	3,959 lb.



The Newmar Factory Tour

We'd love to have you visit our state-of-the-art production facility in Nappanee, Indiana. Factory tours are given Monday through Friday at 10 a.m. and 1 p.m. Eastern Standard Time. Please arrive 15 minutes before the hour, and check in at the tour area located in Building Nine on Cheyenne Street. No open-toed sandals can be worn, and children under the age of eight are not allowed to take the tour. For more information, please call 1-800-860-0086.

The Newmar Difference

Over the past 40 years, Newmar has created a heritage devoted to quality, innovation, luxury and Amish craftsmanship. Newmar products incorporate sound construction principles, such as the leveled and squared chassis, sub-floor structure that's integrated and welded to the chassis rail and insulation that makes them easy to heat and cool. We use a real-world wiring system and we test and weigh each and every vehicle to make sure it meets our high expectations. We also provide custom-built touches, like our hand-crafted cabinetry. With Newmar, you get the ultimate in luxury from a company that's dedicated to its roots and stands for the utmost in quality.



WHEN YOU KNOW THE DIFFERENCE™

GRAND STAR

2009 Motorhome

NEWMAR CORPORATION • 355 N DELAWARE ST • PO BOX 30 • NAPPANEE IN 46550-0030
574-773-7791 • FAX 574-773-2895 • www.newmarcorp.com

Some features shown in our literature are optional. Colors and finishes are photographic representations. The actual materials may look different. Prices, specifications and floorplans are subject to change at Newmar's discretion, without prior notice or obligation. Please see your dealer for actual samples and specifications. © 2008 Newmar Corporation. Printed in the U.S.A. (03/08)