



WHEN YOU KNOW THE DIFFERENCE™

09

MOUNTAIN AIRE



THE MODEL LIFE

C lose your eyes and imagine what's in store for the next chapter of your life. Can you see the 2009 Mountain Aire? This impressive coach awaits you. It embodies a timeless style that complements your unique perspective. It's ready to elevate your lifestyle. Are you?







SIMPLE SPEAKS VOLUMES



Great design is expressive without being boastful. Your living area creates a subtle elegance with its clean lines and silky textures. You can see it in the Villa™ furniture, contemporary light fixtures and fabric-accented hardwood

lambrequins. Guests will have plenty of praise, especially when they notice your entertainment center with a Sony® LCD TV, Pioneer® DVD player and Surround Sound system.



STRUT
DOWN THE ROADWAY



Wait until you experience your new Mountain Aire in person. Its vibrant, dynamic exterior looks even more stunning up close, thanks to the Full-Paint Masterpiece™ Finish with Super Clear Coat.

Standing still, Mountain Aire is an archetype of quality craftsmanship. Built with the foundation of a Spartan® K2 Chassis, it's composed of only the finest materials, including coated aluminum wheels, a power cord reel and chrome mirrors with defrost, turn signal indicators and optional sideview cameras. In motion, your coach won't disappoint, either.



Follow your nose. Gourmet aromas emanate from your state-of-the-art kitchen. Have your guests take their seats around the Corian® table while you prepare to wow them. High-end stainless appliances, such as the GE® convection oven and Norcold® 17 cubic foot refrigerator with auto defrost, icemaker and water dispenser, make it easy to serve your finest meals.

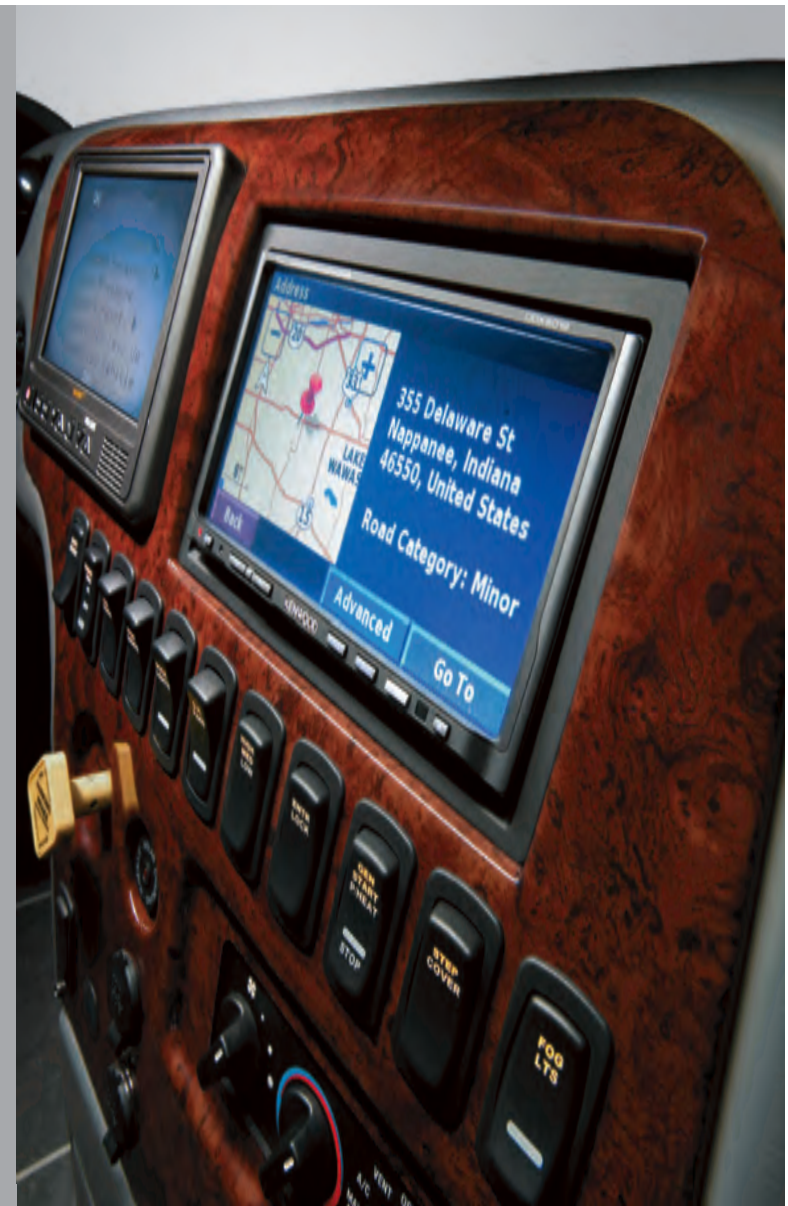
Your optional Fisher & Paykel DishDrawer® lets you linger over conversation instead of the dishes. When it's time to put them away, you'll appreciate all the storage space in your elegant handcrafted hardwood cabinets.



DELICIOUSLY YOURS



GET ON THE
UNSURPASSED
TRACK



Key in. Start the Cummins® ISM 450 Hp engine. TripTek® checklist complete? Done. Find your destination on the optional Kenwood 7" touch screen monitor's Garmin® navigation system. It has convenient service center locations programmed right in. And don't forget to find your station on the SIRIUS® Satellite Radio. Your precisely engineered vehicle is ready to hit the road.

Newmar highline owners can't help but feel relaxed when behind the wheel. Exclusive Comfort Drive™ Steering returns the steering wheel to the center and makes backing up, turning and switching lanes smooth and assured. It's a Newmar innovation you won't find anywhere else.



A stylish touch here, a plush fabric there. See your master bedroom's modern cabinetry, duvet and throw pillows? You'll wake up amidst a cozy atmosphere. Sleeping is sublime on your King-Sized Bed's optional Comfortaire mattress. It uses innovative air technology to let both you and your partner adjust the firmness to your individual preference.

The day awaits. Be inspired by your surroundings, and choose something fashionable from your spacious cedar-lined closet. Turn on your Sony® LCD TV or the optional Bose® Wave® radio to catch up on the latest news. It's time to get moving.



DESIGN YOUR DAY

DÉCOR & EXTERIORS

Mountain Aire's four hardwood cabinet options pair well with any of the color combinations below.

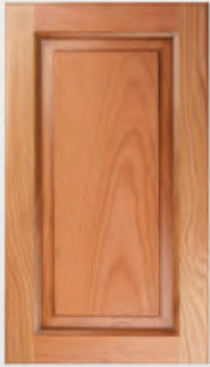


CASHEW



PEWTER

Carmel Glazed Cherry



Coastal Cherry



Mondavi Maple



Natural Maple



POMEGRANATE



VIENNA BLACK

2009 MOUNTAIN AIRE FEATURES

STANDARD FEATURES

CHASSIS FEATURES

Spartan® K2 Chassis with IFS
Cummins® ISM 450 Hp
Two-Stage Engine Compression Brake
Adjustable Pedals
Tag Axles
Coated Aluminum Wheels
HWH® Four-Point Hydraulic Leveling Jacks with
Single Touch Control
Comfort Drive™ Steering with Adjustable Control
Power Tilt and Telescope Steering
Cruise Control
Recessed Fuel Fills with Crossover to Fill from Either Side
Back-Up Alarm
Anti-Lock Braking System
Electronic Chassis Information Display in Dash

AIR CONDITIONING AND HEATING

Three 15M Penguin™ Heat Pump Central Air Conditioners
Hydronic Zone Heating System
Air Conditioning Condensation Lines through Rear
Cap of Coach
Dash Heater and High-Output Air Conditioner
Propane Leak Detector
Wall-Mounted Sensors for Heating and Air Conditioning

APPLIANCES AND ACCESSORIES

GE® 30" Stainless Steel Convection Microwave Oven
Two-Burner Recessed Cooktop
Polished Corian® Range Cover
Norcold® 17 Cu.Ft. Refrigerator with Auto Defrost, Icemaker
and Water Dispenser
One-Piece Washer/Dryer Prep*
Sony® 32" LCD TV in Living Area
Sony® 26" LCD TV in Bedroom
AM/FM Dash Radio with 6-Disc CD Player
Rearview Color Monitor System
Surround Sound System with AM/FM Radio, CD Player and
Pioneer® DVD Player
Cable TV Connection with Rg6 Coax
TV Antenna with Power Booster with One Exterior Jack and
Two Interior Jacks
"TV Antenna Is Up" Warning Signal
Satellite Prep—Phone, TV Jack and Receptacle

Telephone Connection with Phone Jacks in Living Area and
Dash Area
Sony® DVD Player in Bedroom
High Definition Component Wiring and HD-ready Video
Switching System
Safe
Roof-Mounted Air Horns
10 Bc Fire Extinguisher, and Carbon Monoxide and
Smoke Detectors

CABINETS AND FURNITURE

Natural Maple Hardwood Unitized Cabinets with Full
Overlay Doors
Dinette Table with Corian® Insert Top and Four Chairs
(Two Fixed, Two Folding)*
Polished Corian® Countertop in Kitchen with Undermounted
Solid Surface Sink and Flush Sink Covers
Polished Corian® Countertop in Bathroom with Integrated Bowl
Polished Corian® on Bedroom Nightstands and Furniture Tops
Pullout Mobile Island Kitchen Base Cabinet with Polished
Corian® Countertop*
Concealed Hinges on Cabinet Doors
Villa™ Furniture
Pullout Pantry Shelves*
Residential Style Full Extension Ball Bearing Drawer Guides
Kitchen Countertop Extension*
Ultraleather Heated Driver/Passenger Seats with Eight-Way
Power and Power Lumbar, with Power Footrest
Lifts on Bed Top to Access Storage Area
Cedar Paneling in Bedroom Wardrobe
Carpet on Wardrobe Bottoms with Pearl Cream Headliner on
Shelves and Overhead Cabinets
Pullout Step-stool with Storage in Bathroom Cabinet
Storage Shelves Recessed into Rear Cap of Rear
Wardrobe Floorplans
Luxurious Pillowtop Mattress with Quilted Bedspread, Reverse
Shams, Matching Bed Skirt and Accent Pillows
King Bed*

ELECTRICAL FEATURES

10.0 kW Cummins Onan® Quiet Series Diesel Generator
on Hydraulic Slideout with Auto Changeover and Energy
Management System
50-Amp Electrical Service with Flexible Cord on Power Cord
Rewind Reel
Four 6-Volt House Batteries on Pullout Tray
Battery Disconnect Switch

110-Volt Exterior Receptacle
Exterior TV Jack
5-Watt Solar Panel
2,800-Watt Pure Sine-Wave Inverter with Automatic
Generator Start
Emergency Start Switch
Exterior Security Light on Each Side
Midship Side Turn Signals
Recessed Docking Lights
Switched Receptacle for Engine Block Heater
Halogen Lights in Ceiling and Overhead Cabinets
Lighted Wardrobe
Slideout Information Voice Module
Manually Operated Hold-to-Run Slideout Switch
ICC Light Flasher Switch
Two 12-Volt Auxiliary Receptacles on Dashboard
Interior Courtesy Lights
Mood Lighting in Window Treatments, Kitchen and Bed Base
Solar Prep
Daylight Headlight System
Map Lights

EXTERIOR FEATURES

Full-Paint Masterpiece™ Finish with Super Clear Coat and Front
Protective Film
One-Piece Bonded Windshield
Large Chrome Convex Exterior Mirrors with Remote Control,
Defrost and Turn Signal Indicators
Entrance Door with Automatic Double Step
Power Flush Stepwell Cover
Lighted Exterior Storage Compartments with Cargo Liner
Controlled by Interior Master Switch
15,000 lb. Towing Hitch with Two Extra 14-Gauge Wires
Lighted Acrylic Assist Handle at Entrance Door
Rear Protective Tow Guard with Stainless Steel Newmar
Name Cutout
Rear Ladder
Squeegee in Exterior Compartment
Undercoating
Mud Flaps

INTERIOR FEATURES

Padded Vinyl Ceiling
Power/Manual Duo Day/Night Window Shade System
in Cockpit
Lined Day/Night Pleated Window Shades and Lambrequins
Mini Blinds in Bathroom

Hardwood Fascia on Living Area Slideouts
Hardwood Window Sill
Polished Porcelain Floor Tile in Kitchen, Bathroom and Entrance Areas
Polished Ceramic Backsplash with Listello Accent Inlay
Hardwood Raised-Panel Interior Passage Doors
Deluxe Carpeting with High-Density Padding in Living Room and Bedroom
Recessed Ceiling Area with Mood Lighting and Hidden Vents
Interior Assist Handle at Main Entrance Door
Power-Activated Sun Visors

PLUMBING AND BATH FEATURES

Demand Water System with AquaJet™ “ES” Pump
Sewage Holding-Tank Rinse
Thetford™ Aria Sculptured China Stool (Thetford™ Vacuum Flush Stool in Rear Bath Floorplans)
Towel Bar, Tissue Holder, Towel Ring and Robe Hook
Exterior Convenience Wash Station—Hot/Cold Water, Soap and Towel Dispenser
Fiberglass Tub/Shower with Assist Handle and Glass Door Monitor Panel
Monoplex Water-Pump Switches Located in Bathroom, Kitchen and Exterior Near Gate Valves
Designer Faucets in Kitchen and Bathroom
Water Filter for Entire Unit
Water Filter with Drink Dispenser at Kitchen Sink
Power Rewind Water-Hose Reel

CONSTRUCTION FEATURES

Power Lock Arms on All Slideout Rooms

WINDOWS, AWNINGS AND VENTS

Frameless, Double-Pane, Tinted Safety-Glass Windows
Fan-Tastic® Vent with Rain Sensor in Kitchen and Bathroom Areas
Skylight in Bathroom*
Driver's-Side Power Window
Keyless Entry with Door Bell and Touch Pad
A & E® 9000 Bedroom and Slideout Window Awnings
A & E® Oasis Power Front Entrance Door Awning
A & E® Weather Pro Power Side Awning
A & E® Slideout Awning Covers
Cockpit Overhead Ventilation System

OPTIONAL FEATURES

APPLIANCES AND ACCESSORIES

GE® 30" Profile™ Advantium® Microwave Oven
Norcold® Freezer on Pullout Tray
One-Piece Washer/Dryer
Two-Piece Washer/Dryer
Fisher & Paykel DishDrawer®
All Electric Unit with Four Extra Batteries and Frigidaire® Refrigerator
Sony® 32" LCD TV in Front Overhead Cabinet*
SIRIUS® Satellite Radio Capability (Does Not Include SIRIUS® Monthly Subscription)
Kenwood® Dash Radio with Touch Screen Monitor and Garmin® Navigational System
Bose® Wave® Radio with CD Player and Alarm Clock in Bedroom
Pre-programmed Universal Remote Control
External Entertainment Center with Sony® 32" LCD TV, AM/FM Radio and CD Player
Satellite Dish with High Definition Converter
TripTek™ Electronic Travel Information (Displayed on Rearview Monitor)
Sideview Cameras
CB Radio with Antenna
CB Antenna

CABINETS AND FURNITURE

Coastal Cherry Hardwood Cabinets
Mondavi Maple Hardwood Cabinets
Carmel Glazed Cherry Hardwood Cabinets
Ultraleather Sofa*
Ultraleather Dinette*
Ultraleather Combination Dinette and Hide-A-Bed Sofa with Air Mattress*
Ultraleather Hide-A-Bed Sofa with Air Mattress*
Two Ultraleather Recliners*
Combination Desk/Dinette Table with Two Fixed and Two Folding Chairs
Comfortaire Air Mattress for Main Bed

ELECTRICAL FEATURES

Roof-Mounted Spot Light
Four AGM House Batteries
Eight AGM Batteries (Available for All-Electric Unit option)

Pre-Wire for Freezer
Energy Management System

EXTERIOR FEATURES

Large Storage Tray with Access from One Side or Either Side
Small Storage Tray
Power Sliding Storage Tray
Power Baggage Door Locks

INTERIOR FEATURES

Polished Porcelain Floor Tile in Bath, Kitchen and throughout Main Living Area

PLUMBING AND BATH FEATURES

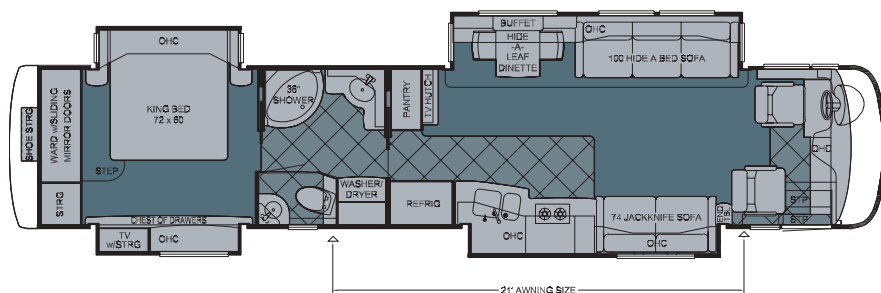
Corian® Shower Walls
Fold-Down Shower Seat

WINDOWS, AWNINGS AND VENTS

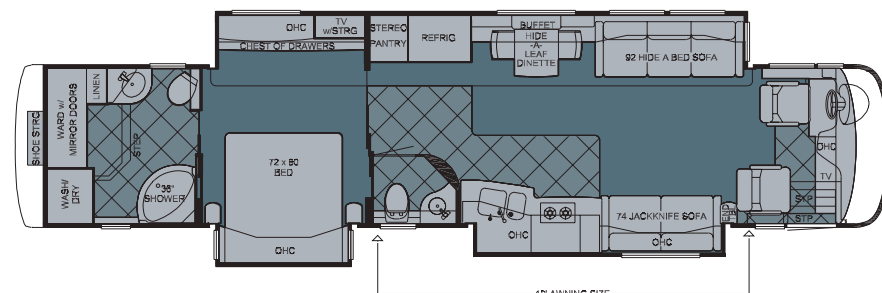
Girard® Power Side Awning with Wind Sensor and Remote Control
Drop-Down Shade on Standard Weather Pro Side Awning

*CHECK WITH DEALERSHIP ON FLOORPLAN AVAILABILITY

MOUNTAIN AIRE FLOORPLANS

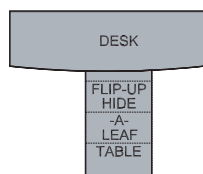


2009 Mountain Aire Diesel Pusher 4523

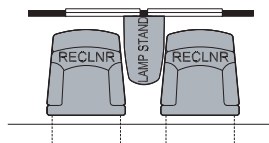


2009 Mountain Aire Diesel Pusher 4526

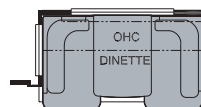
K122/123 Dinette-
Computer Station Combo:
MADP 4523, 4526, 4527, 4528,
4529, 4556



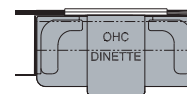
K241 Two Recliners ILO
100" Sofa: MADP 4523,
4526, 4527, 4528,
4529, 4556



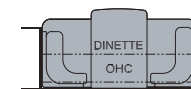
K422 Dinette:
MADP 4523,
4527, 4528, 4529

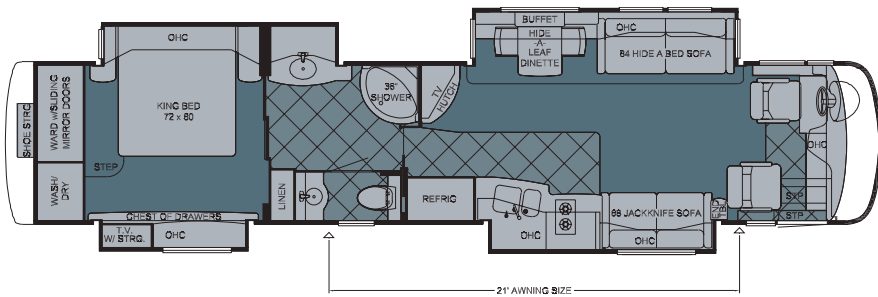


K423 Dinette:
MADP 4526

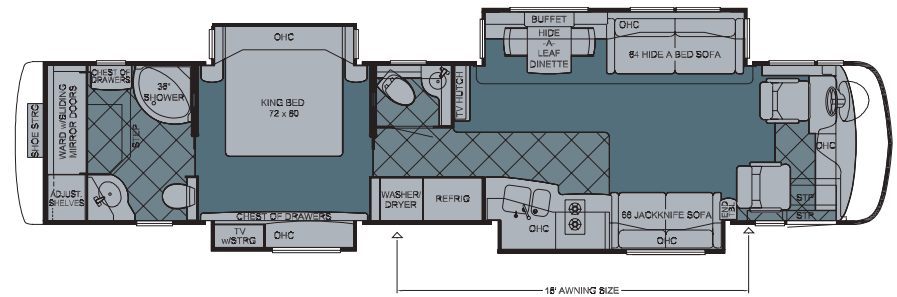


K423_2 Dinette:
MADP 4556

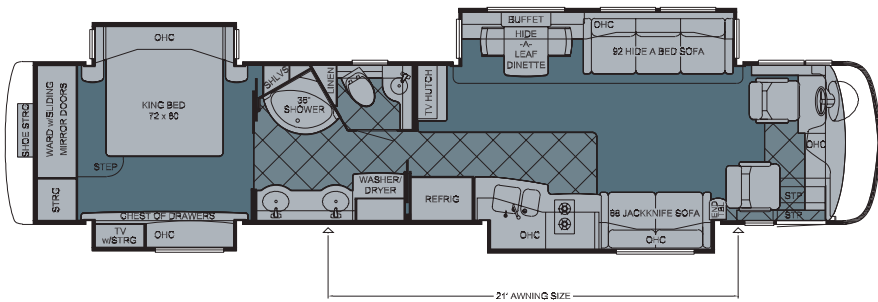




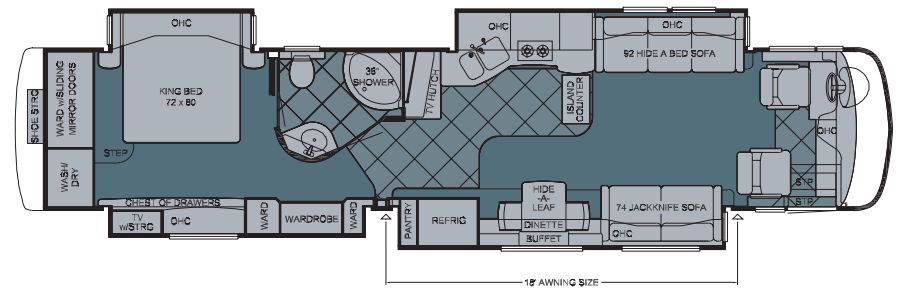
2009 Mountain Aire Diesel Pusher 4527



2009 Mountain Aire Diesel Pusher 4528

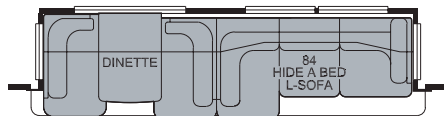


2009 Mountain Aire Diesel Pusher 4529

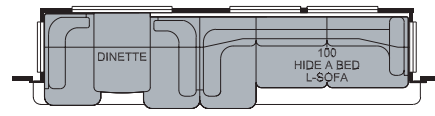


2009 Mountain Aire Diesel Pusher 4556

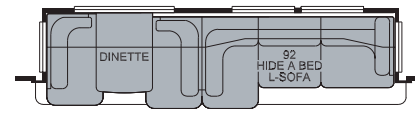
K800_MA1 Combination
Dinette & L-Sofa: MADP 4527,4528



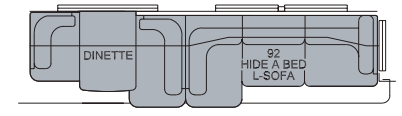
K800_MA2 Combination
Dinette & L-Sofa: MADP 4523



K800_MA3 Combination
Dinette & L-Sofa: MADP 4529



K803 Combination
Dinette & L-Sofa: MADP 4526



MOUNTAIN AIRE CONSTRUCTION



The Spartan® K2 chassis has set the standard in the marketplace for its strength and power. It is equipped with a powerful Cummins® ISM 450 Hp engine, plus a brawny 16,000 lb. IFS (Independent Front Suspension). The K2 chassis allows you to pass other drivers on a steep incline with ease. And the K2 will allow you to maneuver the motor coach like a pro.

Handle tight turns with perfect precision. Nothing can get in your way when you are equipped with a Spartan® K2 under your coach. For peace of mind, there is a roadside assistance program for its entire warranty period.

Newmar Express Limited Warranty

Every Mountain Aire Diesel Pusher is backed by Newmar's two-year limited warranty/unlimited miles. Ask your Newmar dealer for details.

Limited Five-Year Structural Warranty

If any part of your Newmar recreational vehicle superstructure (which is the steel/aluminum structure of the sidewall, roof or frame) fails to perform properly within five years from the date of purchase because of faulty workmanship or material supplied by Newmar, it will be repaired without charge for either parts or labor by Newmar. This structural warranty is available only to the original purchaser and is non-transferable.





Roof R-Value = 16

- a. One-piece Molded Fiberglass Roof
- b. 9mm Wood Decking
- c. Fiberglass Batten Insulation
- d. A/C Ducting
- e. Aluminum Rafter Framing
- f. Kraft Paper Vapor Barrier
- g. 5/8" Bead Foam
- h. 3/16" Panel
- i. Padded Vinyl Overlay

Sidewall R-Value = 11

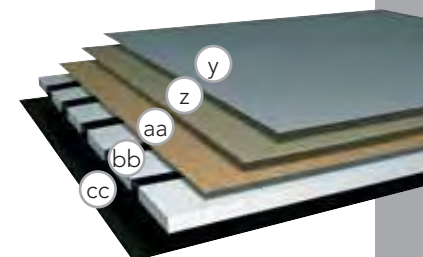
- j. 3/16" Plywood Interior Wall
- k. 5/8" Bead Foam
- l. Kraft Paper Vapor Barrier
- m. Fiberglass Batten Insulation
- n. 3/16" Plywood Exterior Wall
- o. Composite One-Piece Gelcoat Exterior Sidewall
- p. Aluminum Framing with 3 1/2" Header Above

Floor R-Value = 16

- q. Carpet/Tile
- r. Carpet Padding
- s. 5/8" Floor Decking
- t. Fiberglass Batten Insulation
- u. 2"x 3" Wood Framing
- v. Polyethylene Moisture Barrier
- w. Foam Panels (Noise Protection)
- x. Aluminum Ducting

Basement R-Value = 4

- y. Cargo Liner
 - z. 3/8" Floor Decking
 - aa. 3/16" Luan Panel
 - bb. 1 1/2" Bead Foam
 - cc. Aluminum Sheeting with Steel Support Rails to Prevent Bowing and Flexing
1. 15M Penguin™ Heat Pump Central Air Conditioners (3)
 2. One-Piece Bonded Windshield
 3. Coated Aluminum Wheels
 4. Frameless, Double-Pane, Tinted Safety-Glass Windows
 5. Side-Hinged Baggage Doors with Optional Pullout Tray



FLOORPLAN SPECIFICATIONS

FLOORPLAN	APP. OVERALL LENGTH	WIDTH	APP. OVERALL HEIGHT	INTERIOR WIDTH	INTERIOR HEIGHT	GREY	SEWAGE	WATER	PROPANE	FURNACE
4523	44' 11"	101.5"	12' 8"	95.5"	84"	65 gal.	45 gal.	105 gal.	32 gal.	50,000 Btu
4526	44' 11"	101.5"	12' 8"	95.5"	84"	65 gal.	45 gal.	105 gal.	32 gal.	50,000 Btu
4527	44' 11"	101.5"	12' 8"	95.5"	84"	65 gal.	45 gal.	105 gal.	32 gal.	50,000 Btu
4528	44' 11"	101.5"	12' 8"	95.5"	84"	65 gal.	45 gal.	105 gal.	32 gal.	50,000 Btu
4529	44' 11"	101.5"	12' 8"	95.5"	84"	65 gal.	45 gal.	105 gal.	32 gal.	50,000 Btu
4556	44' 11"	101.5"	12' 8"	95.5"	84"	65 gal.	45 gal.	105 gal.	32 gal.	50,000 Btu

SPARTAN® CHASSIS

FLOORPLAN	ENGINE HP	AXLE RATIO	FUEL CAP.	WHEEL- BASE	FRONT GAWR*	REAR GAWR*	TAG GAWR*	GVWR*	GCWR*	APP. UVW	APP. NCC
4523	450	4.33	150 gal.	294"+TAG	16,000 lb.	20,000 lb.	10,000 lb.	46,000 lb.	61,000 lb.	38,465 lb.	7,535 lb.
4526	450	4.33	150 gal.	294"+TAG	16,000 lb.	20,000 lb.	10,000 lb.	46,000 lb.	61,000 lb.	38,550 lb.	7,450 lb.
4527	450	4.33	150 gal.	294"+TAG	16,000 lb.	20,000 lb.	10,000 lb.	46,000 lb.	61,000 lb.	38,380 lb.	7,620 lb.
4528	450	4.33	150 gal.	294"+TAG	16,000 lb.	20,000 lb.	10,000 lb.	46,000 lb.	61,000 lb.	38,550 lb.	7,450 lb.
4529	450	4.33	150 gal.	294"+TAG	16,000 lb.	20,000 lb.	10,000 lb.	46,000 lb.	61,000 lb.	38,650 lb.	7,350 lb.
4556	450	4.33	150 gal.	294"+TAG	16,000 lb.	20,000 lb.	10,000 lb.	46,000 lb.	61,000 lb.	38,630 lb.	7,370 lb.

Lengths, heights, widths and dry weights are approximate. Weight will vary based on optional equipment added to the above base weight.

GAWR: Gross Axle Weight Rating is the maximum permissible weight for an axle.

GVWR: Gross Vehicle Weight Rating is the maximum permissible weight for a fully loaded motor coach.

GCWR: Gross Combination Weight Rating is the value specified by the manufacturer of the vehicle as the maximum allowable loaded weight of this motor coach and any towed trailer or towed vehicle.

UVW: Unloaded Vehicle Weight is the weight of this motor coach as built at the factory with full fuel, engine oil and coolants. The UVW does not include cargo, fresh water, propane gas or dealer-installed accessories.

NCC: Net Carrying Capacity is the maximum weight of all occupants, including the driver, personal belongings, food, fresh water, waste water, propane gas, tools, tongue weight of towed vehicle, dealer-installed accessories, etc., that can be carried by the motor coach.

*Specifications supplied by the chassis manufacturer.



(Please affix dealer stamp in this area.)

There's more to the
2009 MOUNTAIN AIRE
Visit www.newmarcorp.com

09



NEWMAR CORPORATION • 355 N DELAWARE ST • PO BOX 30 • NAPPANEE IN 46550-0030
574-773-7791 • Fax 574-773-2895 • www.newmarcorp.com