

2009 X-AIRE Toy Hauler

Optional Features

Air Conditioning and Heating

15M Penguin Central Air Conditioner
Extra 13.5M Penguin Central Air Conditioner in Bedroom
Wire and Brace for Second Air Conditioner

Appliances and Accessories

Icemaker Added to Refrigerator*
Norcold® 10 cu. ft. Refrigerator
30" Convection Microwave and Three-Burner Cooktop
Central Vacuum with Floor Port and Deluxe Tool Kit
19" LCD TV in Bunk/Loft Area
19" LCD TV in Garage
KICKER® Sound System

Convenience Packages:

Pillow Top Mattress, Sofa/Bed Pillows and Hair Dryer
Prep for Ground Tripod Satellite Dish with Phone, TV Jack and Receptacle
Washer/Dryer Prep

One-Piece Washer/Dryer
DVD Player in Bedroom
High-Definition Wiring with Selector Switch

Cabinets and Furniture

Fall Spice Cabinetry
Titanium Cabinetry
Freestanding Dinette Table with Two Chairs
Two Fixed Dinette Chairs
Two Folding Dinette Chairs
Combination U-Dinette and Sofa
King Bed
Bunk Beds with Electric Bed Loft in Garage

Electrical Features

5.5 kW Cummins Onan® Generator with Auto Changeover and Gen Prep
Gen Prep Includes Energy Command, Start Switch and Fuel Tank with Gauge)
1,200 Watt Inverter with Four 12V Batteries
Solar Prep
Battery Disconnect Switch
Fluorescent Ceiling Lights

Exterior Features

Painted Graphics
One Exterior Pullout Storage Tray
Entry Porch with Collapsible Handrail at Front Entrance Door

Interior Features

Ceramic Tile Floor in Kitchen, Bathroom and Living Room
Vinyl Tile Floor in Kitchen, Bathroom and Living Room
Polished Corian® Kitchen Countertop and Non-Polished Corian® Bathroom Countertop with Integrated Bowls

Plumbing and Bath Features

Fiberglass Tub with Glass Door
12V Heat Pads for Holding Tanks, N/A on CSN

Windows, Awnings and Vents

Carefree® Power Side Awning
Create-A-Breeze Vent with Automatic Lift in Kitchen and over Bathroom Sink
Double-Pane Tinted Safety-Glass Windows
Screen for Rear Cargo Door

Chassis Features

MOR/ryde® Rubber Pin Box
Electric Over Hydraulic Disc Brakes
Rear 12V Power Twin Stabilizer Jacks

Standard Features

Air Conditioning and Heating

15M Brisk Air Central Air Conditioner with Cold Air Ducted into Garage
Two 30 lb. Propane Gas Bottles with Auto Regulator
35,000 BTU Furnace with In-Floor Ducted Heat
Propane Leak Detector

Appliances and Accessories

12 Gal. Gas/Electric Water Heater with Direct-Spark Ignition
Microwave Oven
Three-Burner Cooktop with Oven and Piezo Ignition
Metal Bi-Fold Cooktop Cover
Range Hood with Light and Fan
Corian® Knife Block behind Range
40" LCD TV in Living Room*
26" LCD TV in Living Room Entertainment Center

Surround Sound System with AM/FM Radio, DVD, CD and Sub Woofer
19" LCD TV in Bedroom
Norcold® 8 cu. ft. Refrigerator
Cable TV Connection with RG-6 Coax
TV Antenna with Two Interior Jacks and Video Selector Switch

Living Room Ceiling Fan

Black-Panel Refrigerator Front
Magazine Rack in Water Closet
Roof-Mounted Satellite Dish Prep
Exterior AM/FM/CD Radio with Two Outside and Two Garage Speakers
Fire Extinguisher, Smoke Detector and Carbon Monoxide Detector

Cabinets and Furniture

Baltic Beech Cabinetry with Hardwood Raised-Panel Cathedral Overhead Cabinet Doors
Built-In Booth Dinette
Hide-A-Bed Sofa with ComfortAire Mattress*
Two Bar Stools*
Shoe Storage Shelves in Front Wardrobe
Metal Drawer Guides
Laminate Countertop with Hardwood Trim in Kitchen with Acrylic Sink
Laminate Countertop with Hardwood Trim in Bathroom with Acrylic Sink
One Teflon® Sink Cover
Kitchen Countertop Extension*
Pullout Pantry with Fixed Shelves*
Molded Silverware Divider Tray
Metal Storage Cabinet in Garage
Queen Bed with Quilted Bedspread and Shams
Lifts on Bed Top

Pullout Step-Stool with Storage in Bathroom Cabinet
Your Official X-Aire Dealer:

Electrical Features

110V Exterior Receptacle
12V Lighting throughout (Except Dinette)
Incandescent Lighting in Garage
Wall Reading Lights in Living Area Slideouts
50 Amp Electrical Service with Flexible Power Cord
75 Amp Converter
Dual Battery Box Compartment
Three Exterior Security Lights
Extra Exterior TV Jack
Manually Operated Hold-To-Run Slideout Switch
Command Center above Entrance Door

Exterior Features

Burnt Orange Graphics with Painted Skirt
30" Radius Main Entry Door and 26" Door at Garage
Triple Step at Main Entrance Door
Cargo Hook in Exterior Storage Area
Lighted Exterior Storage Compartment
Extendable Grab Handle at Main Entrance Door with Small Grab Handle at Garage Door
Fueling Station with 30 Gal. Tank
Side Ladder

Interior Features

Padded Vinyl Ceiling Panels
Deluxe Carpeting with High-Density Padding in Living Room and Bedroom
Vinyl Floor in Kitchen, Living Room and Bathroom
Day/Night Pleated Window Shades with Jabots in Living Room and Bedroom
Snap Blinds in Garage
Mini Blinds in Kitchen and Bathroom
Decorative Wall Border
Interior Assist Handle at Main Entry Door
Kitchen Wastebasket
Flat-Panel Interior Passage Doors
Quilted Fabric Headboard
Thick-Ply Thermoplastic Olefin Black Diamond Flooring in Garage
Built-In Landing Strips in Garage

Plumbing and Bath Features

Demand Water System with SHURflo® Pump
Bathroom Accessories:
Toilet Paper Holder and Towel Bar
Shower with Glass Door
Adjustable-Height Shower Head
High-Rise Kitchen Faucet with Pullout Sprayer
Medicine Cabinet with Deluxe Lighting
Monitor Panel
Sewage Holding Tank Rinse
Sewage Hose Storage Tray

Plumbing and Bath Features (cont.)

Hot/Cold Exterior Faucet with 15' Coil Hose and Sprayer
Thetford® Aqua Magic II Toilet with Sprayer Attachment
In-Line Water Filter for Entire Unit
Water Heater Bypass

Construction Features

12" I-Beam Custom-Built Frame
5/8" Structurwood® Floor Decking
Aluminum Framed Sidelwalls, Roof, Front and Rear on 16" Centers
BriteTEK® Roof with Walkable Decking and Radius Aluminum Roof Wrap
Gelcoated Exterior Sidelwalls
Gelcoated Fiberglass Front End Cap and Rear Cargo Door

Enclosed Underbelly with Sheets of Industrial Strength Black Plastic, Ducted Heat and Insulation

PolarPak R-19" Insulation in Roof, Floor and Front End Cap
Composite R-Values:
Roof: R-21 Floor: R-24 Sidelwall: R-8

Windows, Awnings and Vents

Create-A-Breeze Vent with Auto Lift in Bathroom and Loft Area
Carefree® Fiesta LTD Armored Side Awning
Dark Tinted Safety-Glass Windows
Skylight in Bathroom*
Ram Air Vent System in Garage
Window above Main Slideout Room

Chassis Features

Shock Absorbers
16" Tires and Spare Tire
MOR/ryde® LRE Suspension with EZ Lube® Axles
Extended Pin Box
Polished Aluminum Wheels
Power Front Jacks
Quick-Release H/D Pin for Front Jack Legs
Rear Stabilizer Jacks (1 Pair)

*Check with Dealership on Floorplan Availability



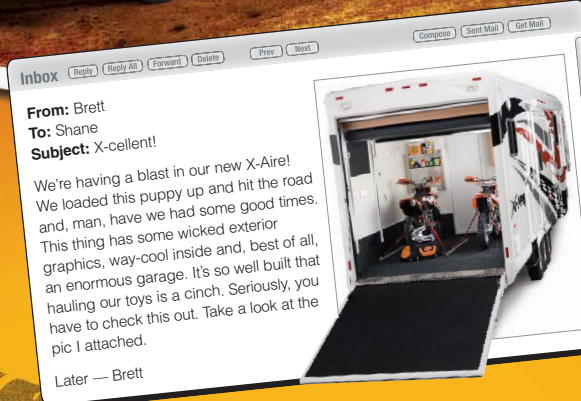
WHEN YOU KNOW THE DIFFERENCE™

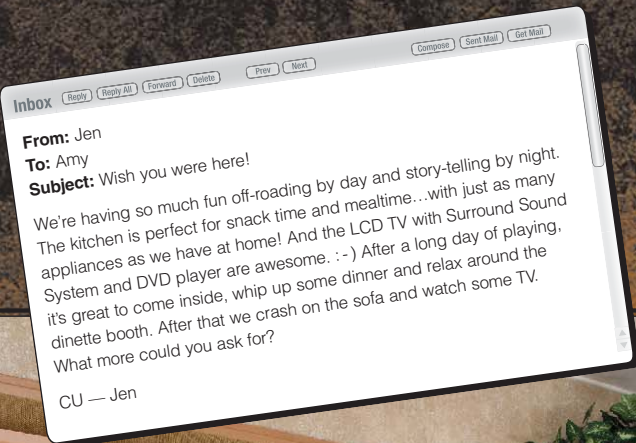
NEWMAR CORPORATION
355 N DELAWARE ST
PO BOX 30
NAPPALEE IN 46550-0030
574-773-7791 Fax 574-773-2895
www.newmarcorp.com

Some features in our literature are optional. Colors and finishes are photographic representations. The actual materials may look different. Prices, specifications and floorplans are subject to change at Newmar's discretion, without prior notice or obligation. Please see your dealer for actual samples and specifications.
©2009 Newmar Corporation. Litho in USA. NEW21501 3/08-20M

Experience the
X-AIRE
2009 Toy Hauler
NEWMAR

The
X-treme
Difference





Enjoy the sun or gaze at the stars with the Create-A-View skylights.

Spread out in the X-Aire's stylish, spacious kitchen. Its abundant cabinet space offers plenty of room for all your provisions.

40CKSH floorplan shown with Red Oxide décor and Baltic Beech cabinetry.



When it's time to eat, the X-Aire kitchen is ready for you to prepare everything from snacks to full-out meals. The refrigerator, 3-burner cooktop, oven and microwave make mealtime a snap.

Grab Some Grub in Style

The loft area, pullout sofa and dinette all convert into sleeping areas (some models sleep up to 12) so there is plenty of room for old and new friends alike to rest their tired bodies after a long day of playing.

The AM/FM stereo with CD player cranks out your favorite tunes from breakfast to nightcap. Enjoy a late-night movie or catch an afternoon talk show on the LCD TV with pre-wired satellite hook-up and optional high-definition wiring.



FMD

Extra Mile Differences

The Newmar-Originated Slideout, with its 2x4 steel rails and massive reinforcement, is the strongest, most reliable and most durable on the market. A superior-strength platform results from welding hefty guide rail tubes to both mainframe rails and welding extra reinforcement into the system. Closed-channel frames keep small animals and outside debris from entering the coach.



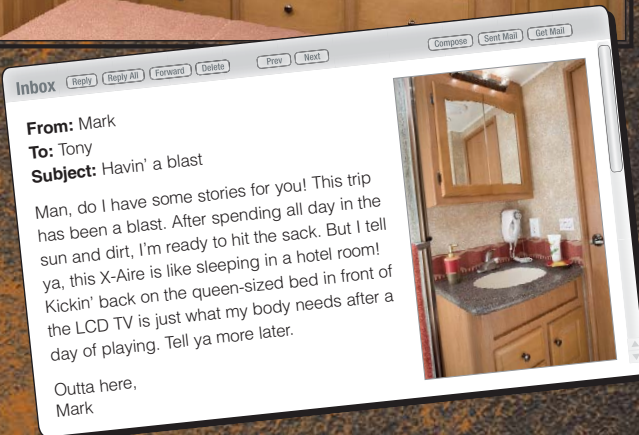
Put Your Feet UP



Store all your travel needs in the SuperStorage™ wardrobe, bedroom vanity and under-bed storage area.

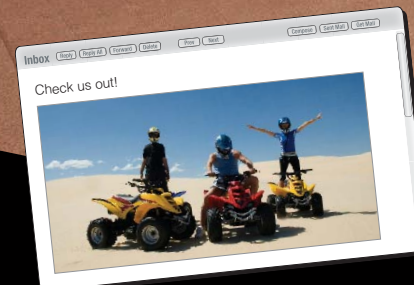
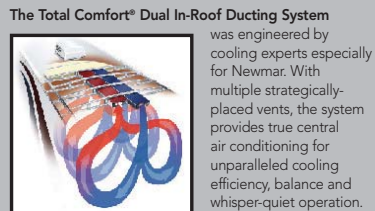


Relax in the fully loaded bedroom suite that features a queen-sized bed, quilted bedspread, mirrored wardrobe doors and LCD TV.



FMD

Extra Mile Differences



Convert the garage into a place of rest with two optional beds. The lower bunk can also act as two back-to-back couches so you can enjoy the view or watch your favorite shows on the LCD TV. An optional pull-down screen keeps the area free of insects and debris.



The durable 3,000-pound capacity ramp door with low ramp angle can handle any load brought its way. The ramp features near-effortless opening and closing without pinch-prone springs. The lockable latches are hidden but readily accessible behind the patent-pending cap for a completely finished look.



The spacious garage holds all your toys and gear...from quads to show dogs to antiques, and everything in between. Built-in landing strips securely anchor your valuable cargo.

The thick-ply Thermoplastic Olefin (TPO) black diamond flooring is petro-chemical and slip resistant. It is much tougher than linoleum or painted floors, and it ensures a safe area thanks to its easy clean-up.



Access just got even easier with the optional sliding porch and exterior pullout storage tray.



Come Out and Play



(optional) Galaxy



(standard) Yellow Flame

EMD

Extra Mile Differences

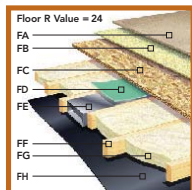
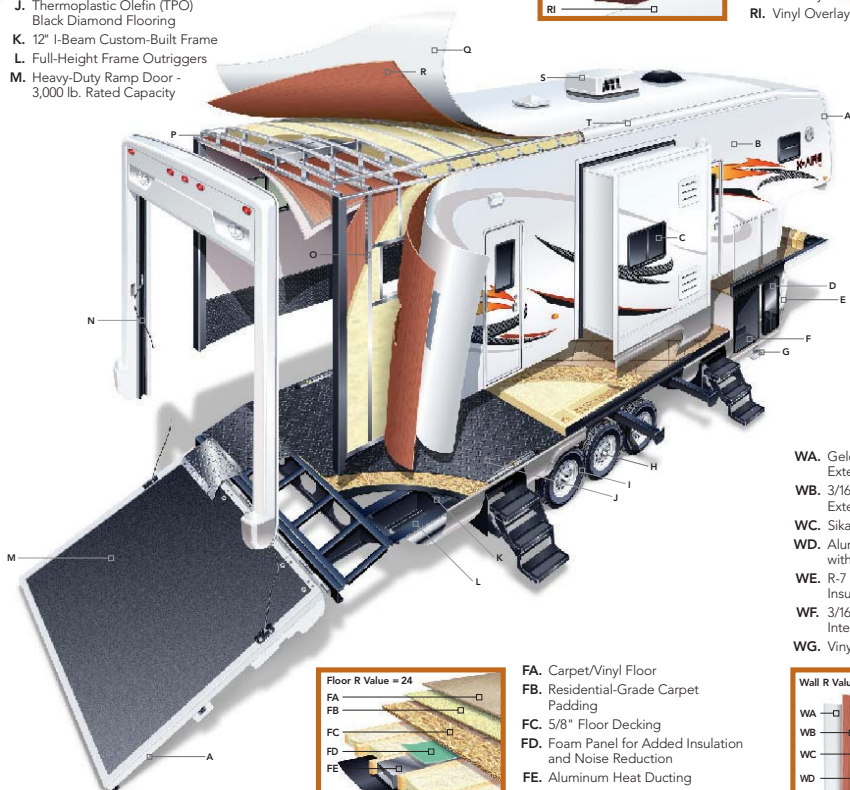
Newmar Builds Walls and Roofs residential-style, with studs located 16 inches on-center. Extra C-channel aluminum studs and extra welds may cost more, but they provide a superior wall structure. Stud construction also allows for residential-style wiring and conveniently located switches. Walls and wall studs, ceilings and rafters, are then bonded with a technologically-advanced adhesive, Sikaflex®, that is durable and flexible to absorb and soften the effects of travel.



Can You Handle This?

Your X-Aire fifth wheel reflects Newmar's long history of product innovation and industry "firsts." It's a showcase for Newmar value.

- A. Aerodynamic Gelcoated Fiberglass End Caps
- B. Gelcoated Exterior Sidewall
- C. Dark Tinted Safety Glass
- D. Dual Battery Box (4 with option)
- E. Molded Lower Sidewall Skirting and Gooseneck
- F. Pass-Through SuperStorage™
- G. Power Front Jacks with Manual Override
- H. EZ Lube® Hubs
- I. MOR/ryde® LRE Suspension
- J. Thermoplastic Olefin (TPO) Black Diamond Flooring
- K. 12" I-Beam Custom-Built Frame
- L. Full-Height Frame Outriggers
- M. Heavy-Duty Ramp Door - 3,000 lb. Rated Capacity
- N. Recessed Gas Struts for Ramp Door Lift Assist
- O. 16" O.C. Aluminum Sidewall Studding
- P. 16" O.C. Aluminum Roof Rafters
- Q. Walkable Roof Decking
- R. BriteTEK™ Roof
- S. 15,000 BTU Total Comfort™ Ducted Air Conditioning
- T. Radius Aluminum Roof Wraps



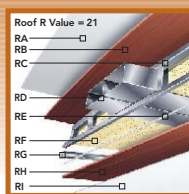
- FA. Carpet/Vinyl Floor
- FB. Residential-Grade Carpet Padding
- FC. 5/8" Floor Decking
- FD. Foam Panel for Added Insulation and Noise Reduction
- FE. Aluminum Heat Ducting
- FF. 2" x 3" Wood Floor Joists
- FG. R-19 Fiberglass Batten Insulation
- FH. Continuous Corrugated Plastic Underbelly

Newmar Express Limited Warranty

As proof of our commitment to you, we at Newmar back every X-Aire fifth wheel with our industry-leading, one-year Newmar Express Limited Warranty. Ask your dealer for details.

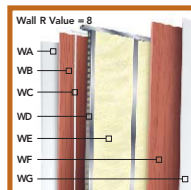
The Limited Five-Year Structural Warranty

If any part of your Newmar recreational vehicle superstructure (which is the steel/aluminum structure of the sidewall, roof or frame) fails to perform properly within five years, from the date of purchase, due to faulty workmanship or material supplied by Newmar, it will be repaired without charge for either parts or labor by Newmar. This structural warranty is available only to the original purchaser and is non-transferable.



- RA. Strong, Durable BriteTEK™ Roof
- RB. 9mm Plywood Decking
- RC. Aluminum Rafter Framing
- RD. Central Air Conditioning Ducting
- RE. Sikaflex® Adhesive
- RF. R-19 Fiberglass Batten Insulation
- RG. Aluminum Stringer Framing
- RH. 3/16" Plywood Ceiling Panel
- RI. Vinyl Overlay

- WA. Gelcoated Fiberglass Exterior Sidewall
- WB. 3/16" Plywood Exterior Wall
- WC. Sikaflex® Adhesive
- WD. Aluminum Framing with C-Channels
- WE. R-7 Fiberglass Batten Insulation
- WF. 3/16" Plywood Interior Wall
- WG. Vinyl Overlay



Inbox

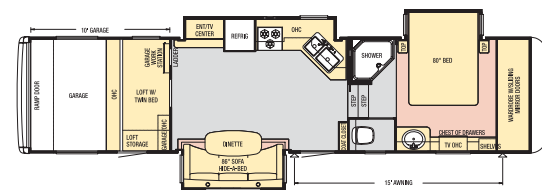
From: Landon
To: Trey
Subject: Check it Out

You asked me what makes the X-Aire different? Well, check it out. Here are just a few examples for ya. Not too shabby, huh?

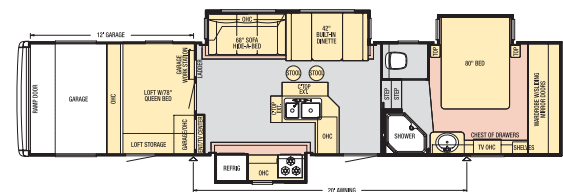
- Standard 16-inch, 8-lug nut, E-rated tires with polished aluminum wheels.
- Convenient, standard fueling station.
- Optional MOR/ryde® pin box for smoother towing.
- Exterior AM/FM radio with CD player and remote, two exterior speakers and two in the garage.
- Optional KICKER® sound system upgrade with 350-watt, 4-channel power amplifier, 6-inch coaxial speakers and 10-inch subwoofer.



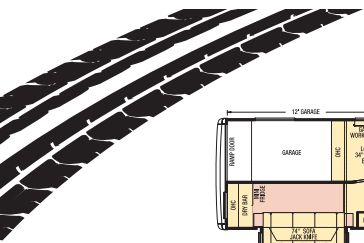
Floorplans



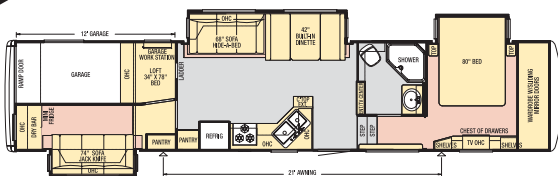
Model	XAFW 35CKRH
Tire Size	235/85R16-E
GAWR	6,000
GVWR	21,000
App. Length	40' 8"
App. Height	12' 11"
Width	101"
App. Dry Weight	14,815
App. Hitch Weight	3,405
Fresh Water (gal.)	105
Grey (gal.)	84
Sewage Cap. (gal.)	42
App. Hitch Height	47"
Heat Cap. (BTU)	35,000



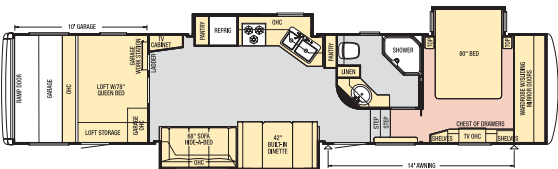
Model	XAFW 35CKRG
Tire Size	235/80R16-E
GAWR	6,000
GVWR	21,000
App. Length	37' 11"
App. Height	12' 11"
Width	101"
App. Dry Weight	14,625
App. Hitch Weight	3,345
Fresh Water (gal.)	105
Grey (gal.)	84
Sewage Cap. (gal.)	42
App. Hitch Height	47"
Heat Cap. (BTU)	35,000



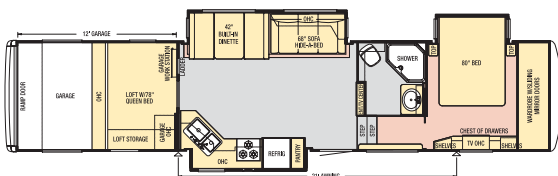
Vinyl Floor
Carpet



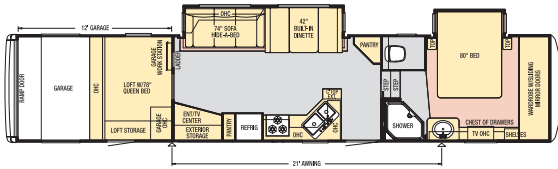
Model	XAFW 39HGSH
Tire Size	235/85R16-E
GAWR	6,000
GVWR	21,000
App. Length	42' 5"
App. Height	12' 11"
Width	101"
App. Dry Weight	15,350
App. Hitch Weight	3,530
Fresh Water (gal.)	105
Grey (gal.)	84
Sewage Cap. (gal.)	42
App. Hitch Height	47"
Heat Cap. (BTU)	35,000



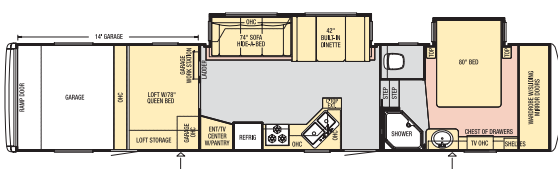
Model	XAFW 39KSTH
Tire Size	235/85R16-E
GAWR	6,000
GVWR	21,000
App. Length	41' 11"
App. Height	12' 11"
Width	101"
App. Dry Weight	15,115
App. Hitch Weight	3,475
Fresh Water (gal.)	105
Grey (gal.)	84
Sewage Cap. (gal.)	42
App. Hitch Height	47"
Heat Cap. (BTU)	35,000



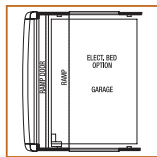
Model	XAFW 40CKSH
Tire Size	235/85R16-E
GAWR	6,000
GVWR	21,000
App. Length	42'
App. Height	12' 11"
Width	101"
App. Dry Weight	15,120
App. Hitch Weight	3,475
Fresh Water (gal.)	105
Grey (gal.)	84
Sewage Cap. (gal.)	42
App. Hitch Height	47"
Heat Cap. (BTU)	35,000



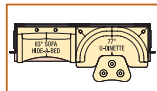
Model	XAFW 41CKEE
Tire Size	235/85R16-E
GAWR	6,000
GVWR	21,000
App. Length	43' 4"
App. Height	12' 11"
Width	101"
App. Dry Weight	14,850
App. Hitch Weight	3,415
Fresh Water (gal.)	105
Grey (gal.)	84
Sewage Cap. (gal.)	42
App. Hitch Height	47"
Heat Cap. (BTU)	35,000



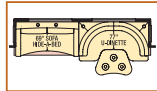
Model	XAFW 41CKLG
Tire Size	235/85R16-E
GAWR	6,000
GVWR	21,000
App. Length	43' 1"
App. Height	12' 11"
Width	101"
App. Dry Weight	14,850
App. Hitch Weight	3,415
Fresh Water (gal.)	105
Grey (gal.)	84
Sewage Cap. (gal.)	42
App. Hitch Height	47"
Heat Cap. (BTU)	35,000



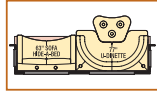
Garage Bed
option available on all except
39KSTH and 39HGSH.



U-Dinette/Hide-A-Bed
option available on 38CKTH
and 39HGSH.



U-Dinette/Hide-A-Bed
option available on 41CKEE
and 41CKLG.



U-Dinette/Hide-A-Bed
option available on 39KSTH
and 40CKSH.

Live It Up!
Floorplans



Hardware



(Standard)
Countertop



(Standard)
Countertop -
Galaxy Decor



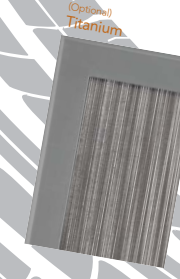
(Optional)
Corian® Countertop



(Standard)
Baltic Beech



(Optional)
Fall Spice



(Optional)
Titanium



(Standard)
Vinyl Flooring



(Standard)
Vinyl Flooring -
Galaxy Decor



(Optional)
Vinyl Tile



(Optional)
Ceramic Tile

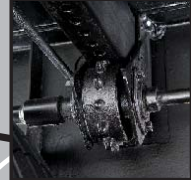


(Optional)
Ceramic Tile



EMD
Extra Mile Differences

Another Newmar Innovation, the Slideout Cog Wheel, was designed for a fuller engagement of the gears to prevent common gear slippage. The complete slideout system – from the superior strength foundation through the durable high-torque motor mechanism, to the independent operation and the unique self-storing travel-lock arms – is designed to provide years of convenient, smooth, dependable service.



Saddle



Red Oxide



Galaxy

