



WHEN YOU KNOW THE DIFFERENCE™

# The Extra Mile



*Bay Star*

*Canyon  
Star*

motorhomes  
2011

# Bay Star

## Taking you places you've never been

The 2011 Bay Star expands the boundaries of what a front-engine motorhome can be. It's made not just for beauty, but also performance and livability.

Take a look: We make our own cabinetry, drawing on the heritage of a region famous for quality home craftsmanship. The galley is designed for optimum storage and convenience, with features like a pullout pantry and top-grade appliances keeping everything you need right where you need it. Bay Star's kitchen flooring is a durable vinyl that's easy to clean and maintain, so it will stay beautiful through years of high-traffic use. And while the living area's soft Ultralux upholstery has the look and feel of fine leather, it's washable with soap and water, so scuffs and stains aren't a worry.



BSCA 2902 shown with Raffia décor and Empire Maple hardwood cabinetry. (Not all fabrics shown are available with décor options offered.)











# Your Hideaway

## EXTRA MILE Differences

### The Total Comfort™ Dual In-Roof Ducting System:

Designed by Newmar in conjunction with cooling engineers. With multiple strategically placed vents, the system provides true central air conditioning for unparalleled cooling efficiency, balance and whisper-quiet operation.



Time to retire to your quiet place? Bay Star has gone the extra mile to make it the perfect retreat. Nestle into the queen-size bed with its smooth-top mattress. Click on the 32-inch LCD television to tune into your favorite show or the big game. Adjust the day/night shades for the level of light and privacy you prefer. Enjoy your down time...this is the place where it's all about you.







## Everything including the kitchen sink

When you look at Bay Star's features, like a dry bar or a home theater entertainment system, you can see the extra planning Newmar puts into your life on the road — from extra-efficient environment control systems and a full-body deluxe paint finish, to finishing touches like lighted wardrobes and exterior TV jacks. We've carefully integrated hundreds of systems and features so you can just kick back and enjoy the simple life.



## EXTRA MILE Differences

### Newmar Slideouts Go the Distance

Newmar introduced the flat-floor slideout and is a pioneer in innovative, reliable slideout operation. We developed an improved wedge roof design that forms a tighter seal when the room is extended. A specially developed double-bulb seal with superior memory keeps out moisture, dust and insects and sweeps off debris as the room is retracted.





Baltic Beech



Empire Maple



Optional  
Vinyl Flooring



Optional  
Vinyl Flooring



## Beauty is skin-deep.

The rest is a matter of quality. Our design team chooses décor combinations – fabrics, woods, counters and hardware – not just for aesthetics, but for easy care and durability, so you'll enjoy your Bay Star years from now as much as you did when it was brand new.



## EXTRA MILE Differences

### Aluminum-Frame Wall and Roof Construction

Welded-aluminum walls and roof structure – studs located 16-inches on-center for greater strength and durability. While extra metal, extra material and extra welds cost more, they provide a superior wall structure for added stability and security to withstand the rigors of the road.



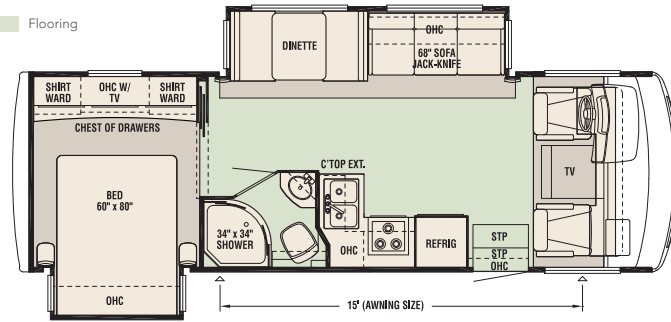
Chromium



Raffia

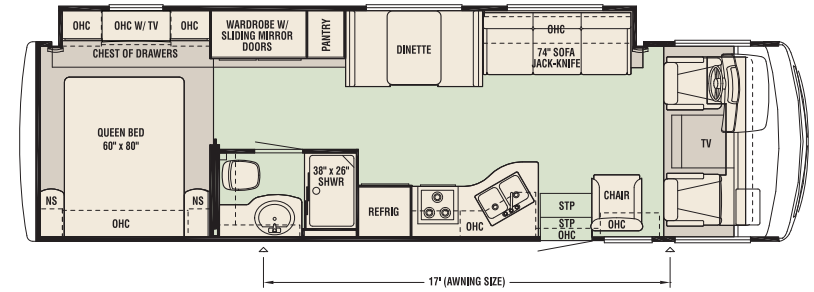
## Uniform Specifications

Width	101.5"
Interior Width	95.5"
Interior Height	80"
App. Height	12' 4"
Water (gal.)	75
Grey (gal.)	60
Sewage Cap. (gal.)	40
Fuel Cap. (gal.)	80
Propane (gal.)	25
Water Heater (gal.)	6
Engine HP	362



### BSCA 2702

App. Length	27' 10"	Front GAWR	7,000	APP. UVW	15,482
Wheel Base	172	Rear GAWR	12,000	APP. NCC	2,518
Axle Ratio	4.88	GVWR	18,000		
Furnace (Btu)	40,000	GCWR	26,000		



### BSCA 3205

App. Length	32' 11"	Front GAWR	7,500	APP. UVW	17,188
Wheel Base	208	Rear GAWR	13,500	APP. NCC	3,312
Axle Ratio	5.38	GVWR	20,500		
Furnace (Btu)	40,000	GCWR	26,000		

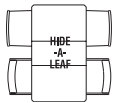
Wardrobe Option available on floorplan 3405 in lieu of Bunk Beds.



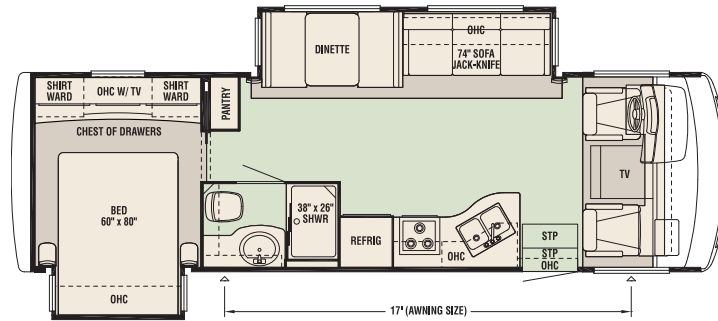
Dry Bar Option available on floorplan 2901 in lieu of Pantry.



Hide-A-Leaf Option available on floorplans 2702, 2901, 3205, 3302 & 3405 in lieu of Dinette.

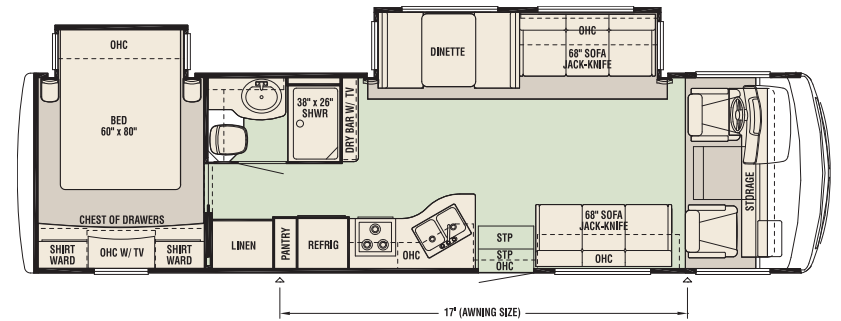


Desk Hide-A-Leaf Option available on floorplans 2702, 2901, 3205, 3302 & 3405 in lieu of Dinette.



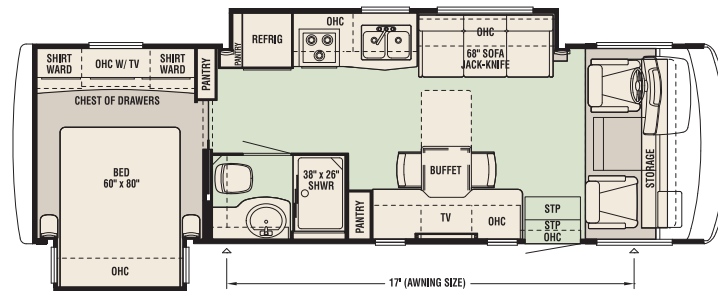
### BSCA 2901

App. Length	29' 11"	Front GAWR	7,000	APP. UVW	16,030
Wheel Base	190	Rear GAWR	12,000	APP. NCC	1,970
Axle Ratio	4.88	GVWR	18,000		
Furnace (Btu)	40,000	GCWR	26,000		



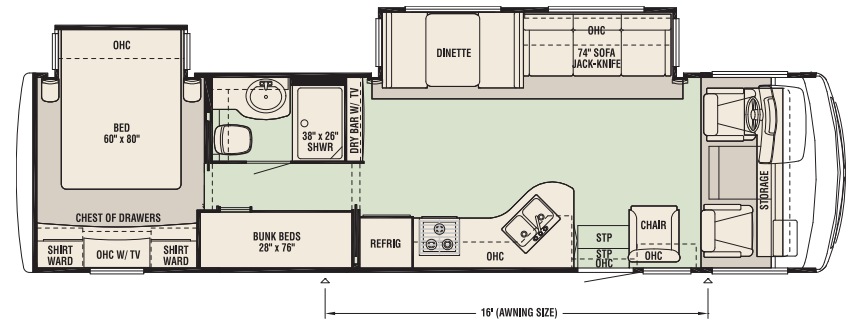
### BSCA 3302

App. Length	33' 10"	Front GAWR	7,500	APP. UVW	16,895
Wheel Base	208	Rear GAWR	13,500	APP. NCC	3,605
Axle Ratio	5.38	GVWR	20,500		
Furnace (Btu)	40,000	GCWR	26,000		



### BSCA 2902

App. Length	29' 11"	Front GAWR	7,500	APP. UVW	16,090
Wheel Base	190	Rear GAWR	13,500	APP. NCC	4,410
Axle Ratio	5.38	GVWR	20,500		
Furnace (Btu)	40,000	GCWR	26,000		



### BSCA 3405

App. Length	34' 8"	Front GAWR	7,500	APP. UVW	17,243
Wheel Base	216	Rear GAWR	13,500	APP. NCC	3,257
Axle Ratio	5.38	GVWR	20,500		
Furnace (Btu)	40,000	GCWR	26,000		



## STANDARD FEATURES

### Chassis Features

Ford® F-53 18,000 lb. Chassis (2702 & 2901 floorplans)  
 Ford® F-53 20,500 lb. Chassis (2902, 31'-33' floorplans)  
 Electronic Leveling Jacks with Automatic Control  
 Cruise Control  
 Tilt Steering Wheel  
 Stainless Steel Wheel Simulators

### Air Conditioning & Heating

13.5M Brisk Air® Central Air Conditioner  
 Dash Heater and Air Conditioner  
 Propane Leak Detector

### Appliances & Accessories

Three-Burner Range with Metal Oven Door and Piezo Ignition  
 Bi-Fold Range Cover  
 Norcold® 8 cu. ft. Refrigerator with Black Front Panel  
 Spacesaver Microwave Oven  
 6 Gal. Gas/Electric Water Heater with Electronic Ignition  
 Sony® 32" or 40" LCD TV in Living Area\*  
 Sony® DVD Players in Living Area and Bedroom  
 Sony® 32" LCD TV in Bedroom  
 AM/FM Dash Radio with MP3 Adapter and CD Player  
 Black & White Rearview Monitor System with Audio  
 TV Antenna with Power Booster and Two Interior Jacks  
 Satellite Prep  
 Phone Jack in Living Area  
 Cable TV Connection with RG-6 Coax  
 10 Bc Fire Extinguisher, Smoke Detector and Carbon Monoxide Detector

### Cabinets & Furniture

Baltic Beech Raised-Panel Overhead Cabinet Doors  
 Booth Dinette with Forward-Facing Seat Belts  
 Laminate Kitchen Countertop with Bullnose Edge  
 Stainless Steel Kitchen Sink with Sink Covers  
 Laminate Countertop with Bullnose Edge and ABS Bowl  
 Residential-Style Full-Extension Ball Bearing Drawer Guides  
 Kitchen Countertop Extension\*  
 Pullout Pantry\*  
 Flexsteel® Ultralux Leather Furniture  
 Lifts on Bed Top  
 Smooth-Top Mattress with Quilted Bedspread and Accent Pillow  
 Pullout Step-Stool with Storage in Bathroom Cabinet\*

### Electrical Features

4.0 kW Cummins Onan® Generator with Remote Switch and Automatic Changeover  
 30 Amp Electrical Service with Flexible Cord  
 Two 12V House Batteries  
 Battery Disconnect Switch  
 110V Exterior Receptacle  
 12V Auxiliary Receptacle in Dash  
 5 Watt Solar Panel  
 45 Amp Converter  
 Daytime Headlight System  
 Emergency Start Switch  
 Fluorescent Ceiling Lights Throughout  
 Lighted Wardrobe  
 Manually Operated Hold-to-Run Slideout Switch  
 Exterior TV Jack

### Exterior Features

Full-Paint Masterpiece Finish™ with Front Protective Film  
 One-Piece Windshield  
 Convex Exterior Mirrors with Defrost  
 Entrance Door with Automatic Double Step  
 Lighted Exterior Storage Compartments with Cargo Liner  
 Rear Hitch for Towing Car with Two Extra 14-Gauge Wires  
 Assist Handle at Entrance Door  
 Undercoating  
 Mud Flaps

### Interior Features

Padded Vinyl Ceiling  
 Day/Night Pleated Window Shades and Valances  
 Mini Blinds in Bathroom  
 Vinyl Flooring in Kitchen, Living Area and Bathroom  
 Deluxe Carpeting with High-Density Padding in Living Area and Bedroom  
 Interior Assist Handle at Main Entrance Door  
 Shoe Storage in Entrance Step Compartment  
 Wraparound Windshield Privacy Shade

### Plumbing & Bath Features

Demand Water System with SHURflo® Pump  
 Sewage Holding Tank Rinse  
 Water Heater Bypass  
 Thetford™ Aqua Magic Toilet with Spray Attachment  
 Towel Bars and Toilet Paper Holder  
 ABS Shower with Glass Enclosure  
 Exterior Shower  
 Monoplex Water Pump Switch System  
 Monitor Panel

### Construction Features

BriteTEK™ Roof with 9mm Decking  
 Gelcoated Fiberglass Exterior Sides  
 Gelcoated Fiberglass End Caps  
 Aluminum-Frame Sidewalls and Roof on 16" Centers  
 5/8" Bead Foam Insulation Laminated in Sidewalls and Ceiling  
 Composite R-Values:  
 Roof: R-16 Floor: R-11 Sidewalls: R-11

### Windows, Awnings & Vents

Tinted Safety Glass Windows  
 Power Vent with Wall Switch in Bathroom  
 Skylight in Bathroom\*  
 Dometic® A&E 8500 Side Awning  
 Slideout Covers  
 Two Dash Fans

## OPTIONAL FEATURES

### Option Package (32'-34' floorplans)

Extra 13.5M Brisk Air® Central Air Conditioner  
 5.5 Cummins Onan® Marquis Generator  
 50 Amp Electrical Service with Energy Management System

### Air Conditioning & Heating

15.0M Penguin™ Heat Pump Central Air Conditioner  
 Auxiliary Heater in Bedroom

### Appliances & Accessories

Sony® Surround Sound System with AM/FM Radio and Subwoofer  
 SIRIUS® Satellite Radio Capability (does not include monthly subscription)  
 Automatic Satellite Dish (does not include receiver)  
 CB Antenna  
 High-Definition Wiring  
 Sideview Cameras

### Cabinets & Furniture

Empire Maple Cabinetry  
 Hidden-Leaf Dinette Table with Four Chairs (two fixed, two folding)\*  
 Wardrobe in Place of Bunk Beds\*

### Electrical Features

600 Watt Inverters for Living Area and Bedroom TVs  
 Solar Prep

### Exterior Features

Convex Exterior Mirrors with Defrost and Remote Control  
 Rear Ladder

### Interior Features

Vinyl Tile Flooring in Kitchen, Living Area and Bathroom

### Windows, Awnings & Vents

Double-Pane Tinted Safety Glass Windows  
 Rear Window (single-pane)  
 Power Vent in Kitchen  
 Bunk Windows\*

\*check with dealership on floorplan availability

Lengths do not include the rear ladder. Chassis specifications are supplied by manufacturer.

**Gross Axle Weight Rating (GAWR)** - the maximum permissible weight for an axle.

**Gross Vehicle Weight Rating (GVWR)** - the maximum permissible weight of a fully loaded motorhome.

**Gross Combination Weight Rating (GCWR)** - the value specified by the manufacturer of the vehicle as the maximum allowable loaded weight of this motorhome and towed trailer or towed vehicle.

**Unloaded Vehicle Weight (UVW)** - the weight of this motorhome as built at the factory with full fuel, engine oil and coolants. The UVW does not include cargo, fresh water, LP gas or dealer-installed accessories.

**Net Carrying Capacity (NCC)** - the maximum weight of all occupants, including the driver, personal belongings, food, fresh water, waste water, LP gas, tools, tongue weight of towed vehicle, dealer-installed accessories, etc., that can be carried by the motorhome.



**Ceilings: R-Value = 16**

- a. BriteTEK™ Roof
- b. 9mm Wood Decking
- c. Fiberglass Batten Insulation
- d. Total Comfort™ Ducted A/C
- e. Aluminum Roof Truss
- f. Kraft Paper Vapor Barrier
- g. 5/8" Bead Foam
- h. 3/16" Plywood Ceiling Panel
- i. Padded Vinyl Overlay

**Walls: R-Value = 11**

- j. 16" On-Center Aluminum Framing with 3 1/2" Header
- k. 3/16" Plywood Interior Wall
- l. 5/8" Bead Foam
- m. Kraft Paper Vapor Barrier
- n. Fiberglass Batten Insulation
- o. 3/16" Plywood Exterior Wall
- p. Composite One-Piece Gelcoat Exterior Sidewall

**Flooring: R-Value = 11**

- q. Carpet / Tile
- r. Carpet Padding
- s. 5/8" Floor Decking
- t. Fiberglass Batten Insulation
- u. 2" x 3" Wood Framing
- v. Polyethylene Moisture Barrier
- w. Aluminum Ducting

**EXTRA MILE Differences**

**Sikaflex® Adhesive**

Used throughout Newmar construction, Sikaflex elastic adhesive is one of the strongest bonding agents on the market today. It also serves as a sealant against dust and moisture, and dampens both sound and vibration – all for extra structural integrity and additional living comfort.

Newmar was one of the pioneers of welded aluminum-frame body construction. And unlike others, we haven't abandoned it to save a few dollars. It provides optimal location of electrical plugs and switches, because wiring is run through the wall studs – not the floor and cabinets, as with laminated-wall RVs. Stud grommets protect wiring from abrasion. But most important, the frame is lightweight, strong and durable, to maintain its integrity over miles of road jolts and vibration.



## Smooth and steady

Newmar goes the extra mile to make sure your on-the-road experience is the best it can be — with optional side cameras for added visual safety, a comfortable and functional cockpit with all your controls within easy reach, easy access to pass-through SuperStorage basement space, and much more.

Bay Star and Canyon Star are built on Ford® Class A motorhome chassis with Workhorse™ chassis\* available on some floorplans – great choices for engineering, performance, reliability and the best service. Extra heavy-duty subfloor framing and outriggers couple the coach body with the chassis to go the extra mile in ruggedness and stability on the road. And the quality full-body Masterpiece™ paint finish, worthy of top-of-the-line diesel pushers, makes your gas motorhome look like a million bucks.

Ask your dealer for a test drive so you can see and feel the difference for yourself.



Bay Star Dash



Canyon Star Dash

## EXTRA MILE Differences

### Awning Weathershields

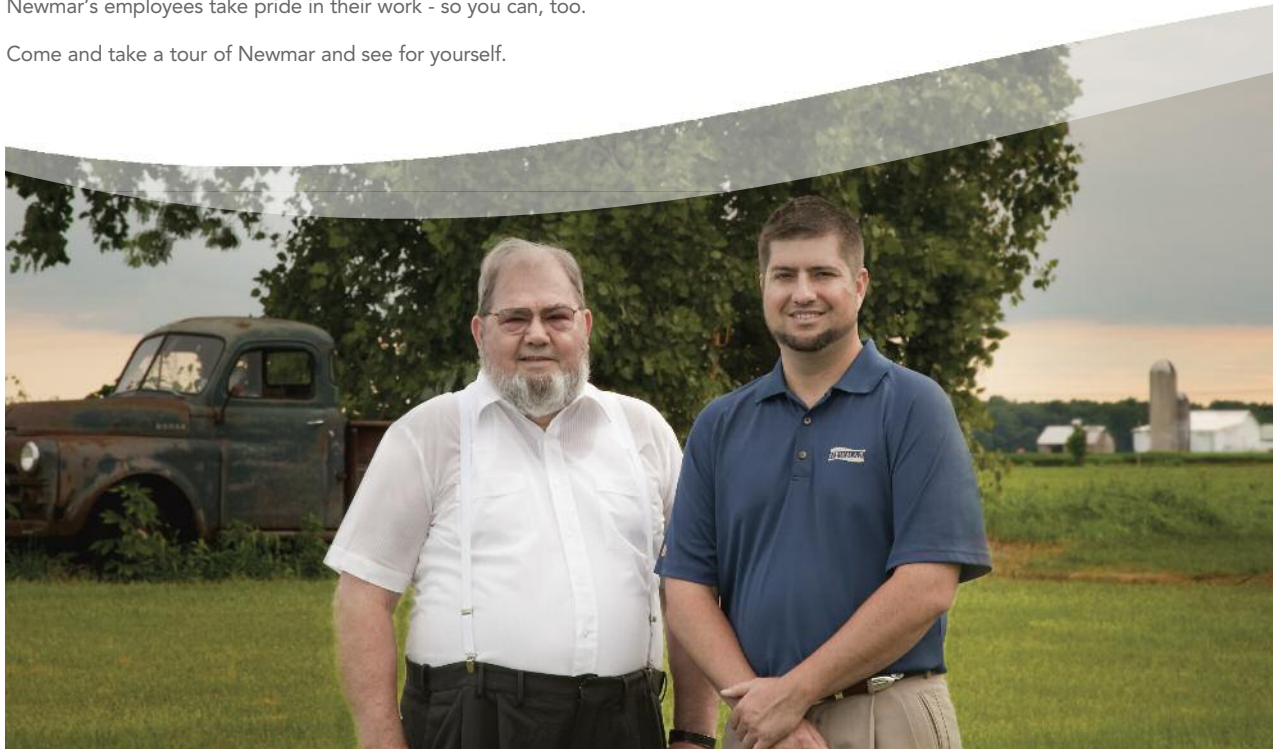
Attractive all-metal weathershields on brand-name patio and slideout awnings provide protection and color-coordinated great looks. Typically an additional-cost option on other gas motorhomes, all-metal awning weathershields are standard equipment on Bay Star and Canyon Star.

\*check with dealership on floorplan availability



## People who appreciate the value of family and neighbors.

The quietly energetic farming community of Nappanee, Indiana is home to the Miller family, the owners of Newmar, who are actively engaged in Newmar's operations and embrace the thought of employees, suppliers, dealers and customers as part of the Newmar "family." This family is significantly larger than just the six people it started out with in 1968, but continues to strive for faithfulness to the tenets of its founders. These include a strong sense of community, bearing the burdens of others, forgiveness and fairness, honesty and integrity, and peace with one's neighbors. When working with a company based on these principles, it shows in how they do business and how they build their products. Newmar's employees take pride in their work - so you can, too. Come and take a tour of Newmar and see for yourself.



Mahlon Miller, Newmar Corp. owner; Matthew Miller, Newmar Corp. president.

Your Official Newmar Dealer:



WHEN YOU KNOW THE DIFFERENCE™

NEWMAR CORPORATION  
355 N DELAWARE ST  
PO BOX 30  
NAPPANEE IN 46550-0030  
574-773-7791 Fax 574-773-2895

[www.newmarcorp.com](http://www.newmarcorp.com)

Some features in our literature are optional. Colors and finishes are photographic representations. The actual materials may look different. Prices, specifications and floorplans are subject to change at Newmar's discretion, without prior notice or obligation. Please see your dealer for actual samples and specifications. ©2010 Newmar Corporation. Litho in USA. NEW21700 7/10-15M

## Warranty

**Newmar Express Limited Warranty** - As proof of our commitment to you, we at Newmar back every motorhome with our industry-leading, one-year Newmar Express Limited Warranty. Ask your dealer for details.

**Limited Five-Year Structural Warranty** - If any part of your Newmar recreational vehicle superstructure (which is the steel/aluminum structure of the sidewall, roof or frame) fails to perform properly within five years from the date of purchase, due to faulty workmanship or material supplied by Newmar, it will be repaired without charge for either parts or labor by Newmar. This structural warranty is available only to the original purchaser and is non-transferrable.

## Factory Tour

We'd love to have you visit our production facility in Nappanee, Indiana, so you can see for yourself how much care and dedication we put into building every Newmar RV.

**Tour times:** Monday - Friday at 10 a.m. and 1 p.m. EST.

(Please arrive 15 minutes before the hour.)

**Check-in:** Tour area in building nine on Cheyenne Street.

**Restrictions:** No open-toed sandals; no children under 8.

**For more information:** 1-800-860-0086.

We hope to see you soon!

## Extra Mile Differences

Doing things "well enough" just isn't good enough here at Newmar. We never stop thinking about how to make every element of our products better, safer and more enjoyable. We've highlighted some of these **Extra Mile Differences** in this brochure so you can see where and how our commitment is realized – in the way your coach is built as well as the way it supports your enjoyment of life on the road.

We try to live by the Golden Rule, and we try to work by it, too. We won't settle for anything less than what's right for you – because you're not just our customer. You're our neighbor. And we truly believe in "loving your neighbor as yourself." **That's the essence of the Newmar difference.**