



WHEN YOU KNOW THE DIFFERENCE™

# The Extra Mile



*Bay Star*

*Canyon  
Star*

motorhomes

2011



# Canyon Star

## Freedom to go the distance

2011 Canyon Star is a gas motorhome that delivers many of the same qualities of Newmar's flagship diesel pushers. It's a coach designed for people who spend a long time traveling a long way from home.

And you have the freedom to equip your coach to suit your needs. You can pick a floorplan great for a couple in their second youth...or a growing family's model with a bunkhouse, complete with LCD monitors and DVD players. Whatever your choice, your ideal Canyon Star is the result of generations of work at perfecting the art and science of building the finest RVs.



CSCA 3642 shown with Truffle décor,  
Empire Maple hardwood cabinetry and  
optional simulated plank flooring.











## EXTRA MILE Differences

### The Slideout Cog Wheel

Another innovation by Newmar, this design provides fuller engagement of the gears for prevention of gear slippage – a nuisance in other systems. Our slideout's superior strength, durable high-torque motor mechanism, independent operation and unique self-storing travel-lock arms are designed to provide years of convenient, smooth, dependable service.

# Room to Breathe





If you're tired of cramped bedrooms and bathrooms, you'll love the wide-open spaces of Canyon Star. We've combined room to live, work and relax with loads of storage in numerous drawers and two spacious wardrobes. And of course the bed lifts up, with the roomy space underneath nicely finished to safely enclose your delicate linens or clothing.

*Canyon  
Star*



Newmar ingenuity: In the bathroom you'll find a pullout stepstool\* to help little ones reach the sink – or help you reach the top shelf of the medicine cabinet. It even has storage space inside.

\*check with dealership on floorplan availability



## Mrs. Miller's Kitchen

We consulted with the industry's leading experts on how to design our motorhome kitchens: The women in Newmar's family. The years they've spent working in the business and traveling in Newmar RVs add up to the best resource there is for designing the ideal galley.

That's why our kitchens are supremely functional, with the right kind of storage...the right arrangement of storage and appliances...exactly what you need to make cooking a joy.







*Canyon  
Star*

Baltic Beech



Empire Maple



## EXTRA MILE Differences

### Handcrafted Cabinetry

Created by Newmar designers and built by skilled cabinet makers, our handcrafted cabinetry with solid hardwood doors is fit for the finest homes. Cabinet frames are fitted and screwed for strength and durability to withstand many miles of road vibrations, and expert assembly means spot-on alignment for silky-smooth door and drawer operation. Luxurious finishes, quality materials and superb construction are standard here at Newmar.



## EXTRA MILE Differences

### Radius Countertops

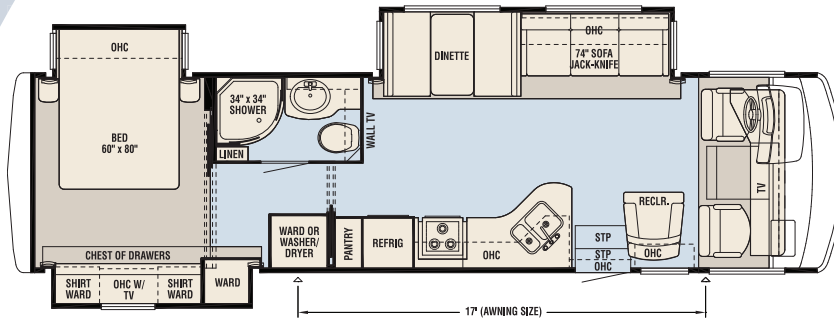
High-quality countertops are integrated seamlessly with backsplashes and in-line sinks for beauty and easy clean-up. They are non-porous and resistant to heat and scratches. Newmar craftsman expertly fit, finish and install them.



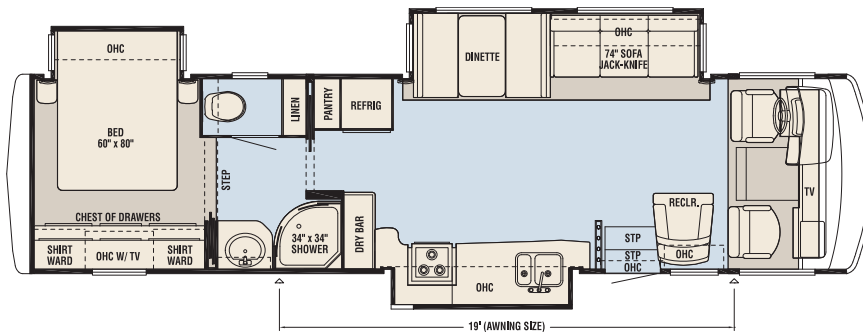
Midnight



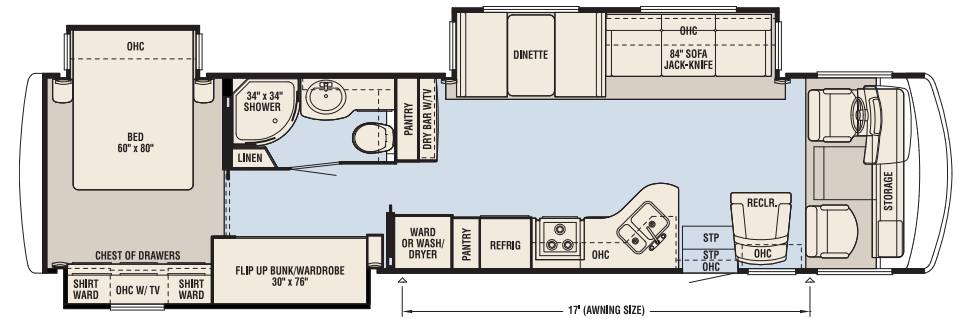
Truffle



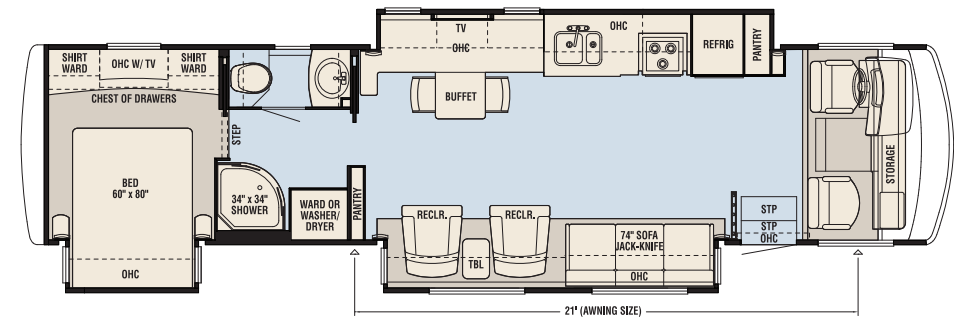
CSCA 3411		Ford® / Workhorse™ Chassis	
App. Length	34' 11"	Front GAWR	8,000
Wheel Base	216	Rear GAWR	(F)15,000/(W)14,500
Axle Ratio	(F)5.38/(W)5.86	GVWR	22,000
Furnace (Btu)	40,000	GCWR	26,000



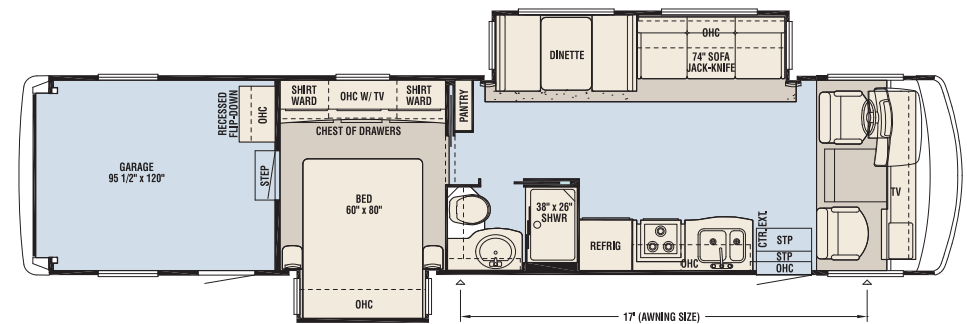
CSCA 3642		Ford® / Workhorse™ Chassis	
App. Length	36' 3"	Front GAWR	8,000
Wheel Base	234	Rear GAWR	(F)15,000/(W)14,500
Axle Ratio	(F)5.38/(W)5.86	GVWR	22,000
Furnace (Btu)	40,000	GCWR	26,000



CSCA 3810		Ford® / Workhorse™ Chassis	
App. Length	38' 11"	Front GAWR	9,000
Wheel Base	260	Rear GAWR	17,500
Axle Ratio	5.38	GVWR	26,000
Furnace (Btu)	40,000	GCWR	30,000



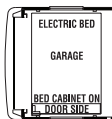
CSCA 3856		Ford® / Workhorse™ Chassis	
App. Length	38' 11"	Front GAWR	9,000
Wheel Base	260	Rear GAWR	17,500
Axle Ratio	5.38	GVWR	26,000
Furnace (Btu)	50,000	GCWR	30,000



CSCA 3920		Ford® / Workhorse™ Chassis	
App. Length	39' 5"	Front GAWR	9,000
Wheel Base	260	Rear GAWR	17,500
Axle Ratio	5.38	GVWR	26,000
Furnace (Btu)	40,000	GCWR	30,000

# Floorplans & Specifications

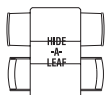
Electric Bed Option available on floorplan 3920.



Dry Bar Option available on floorplan 3920 in lieu of Pantry.



Hide-A-Leaf Option available on floorplans 3411, 3642, 3810 & 3920 in lieu of Dinette.



Desk Hide-A-Leaf Option available on floorplans 3411, 3642, 3810 & 3920 in lieu of Dinette.



Free Standing Dinette Option available on floorplans 3411, 3642, 3810 & 3920 in lieu of Dinette.



Carpet Flooring

## Uniform Specifications

Width	101.5"
Interior Width	95.5"
Interior Height	84"
App. Height	12' 10-11"
Water (gal.)	75
Grey (gal.)	60
Sewage Cap. (gal.)	40
Fuel Cap. (gal.)	(F)80/(W)75
Propane (gal.)	25
Water Heater (gal.)	10
Engine HP (Ford)	362
Engine HP (Workhorse)	340



STANDARD FEATURES

Chassis Features

Ford® F-53 22,000 lb.Chassis (34'-36' floorplans)

Ford® F-53 26,000 lb.Chassis (38'-39' floorplans)

Electric Leveling Jacks with Automatic Control

Cruise Control

Tilt Steering Wheel

Coated Aluminum Wheels

Air Conditioning & Heating

Two 13.5M Brisk® Central Air Conditioners

Dash Heater and Air Conditioner

Propane Leak Detector

Appliances & Accessories

Three-Burner Recessed Range with Glass Oven

Door & Piezo Ignition

Polished Solid Surface Range Cover

Norcold® 8 cu. ft. Refrigerator with Black Front Panel

Spacesaver Microwave Oven

10 Gal. Gas/Electric Water Heater with Direct-Spark Ignition

Sony® 32" or 40" LCD TV in Living Area

Sony® 32" LCD TV in Bedroom

AM/FM Dash Radio with MP3 Adapter and CD Player

Sony® DVD Players in Living Area and Bedroom

AM/FM Radio and Single-Disc CD Player with Two Exterior and Two Interior Speakers in Garage\*

Rearview Monitor System with Audio

TV Antenna with Power Booster and Two Interior Jacks

Satellite Prep

Phone Jacks in Living Area

Cable TV Connection with RG-6 Coax

10 Bc Fire Extinguisher, Smoke Detector and Carbon Monoxide Detector

Fire Extinguisher in Garage\*

Lengths do not include the rear ladder. Chassis specifications are supplied by manufacturer.

**Gross Axle Weight Rating (GAWR)** - the maximum permissible weight for an axle.

**Gross Vehicle Weight Rating (GVWR)** - the maximum permissible weight of a fully loaded motorhome.

**Gross Combination Weight Rating (GCWR)** - the value specified by the manufacturer of the vehicle as the maximum allowable loaded weight of this motorhome and towed trailer or towed vehicle.

**Unloaded Vehicle Weight (UVW)** - the weight of this motorhome as built at the factory with full fuel, engine oil and coolants. The UVW does not include cargo, fresh water, LP gas or dealer-installed accessories.

**Net Carrying Capacity (NCC)** - the maximum weight of all occupants, including the driver, personal belongings, food, fresh water, waste water, LP gas, tools, tongue weight of towed vehicle, dealer-installed accessories, etc., that can be carried by the motorhome.

Cabinets & Furniture

Baltic Beech Raised-Panel Overhead Cabinet Doors

Booth Dinette with Forward-Facing Seat Belts

Laminate Kitchen Countertop

Undermounted Stainless Steel Kitchen Sink with Flush Sink Covers

Laminate Bathroom Countertop with Porcelain or Acrylic Sink\*

Residential-Style Full-Extension Ball Bearing Drawer Guides

Kitchen Countertop Extension\*

Pullout Pantry\*

Flexsteel® Ultralux Leather Furniture

Driver/Passenger Seats with Six-Way Power Driver Seat

Lifts on Bed Top to Access Storage Area\*

Smooth-Top Mattress with Quilted Bedspread, Shams and Accent Pillows

Pullout Step-Stool with Storage in Bathroom Cabinet\*

Electrical Features

5.5 kW Cummins Onan® Marquis Generator with Remote Switch and Automatic Changeover

50 Amp Electrical Service with Flexible Cord

Two 12V House Batteries

Battery Disconnect Switch

110V Exterior Receptacle

12V Auxiliary Receptacle in Dash

5 Watt Solar Panel

55 Amp Converter

Daytime Headlight System

Emergency Start Switch

Fluorescent Ceiling Lights Throughout

Lighted Wardrobe

Manually Operated Hold-to-Run Slideout Switch

Exterior TV Jack

Energy Management System

ICC Light Flasher Switch

Fog Lights

Exterior Features

Full-Paint Masterpiece Finish™ with Front Protective Film

One-Piece Windshield

SuperStorage™ below Rear Bedroom Floor\*

Convex Exterior Mirrors with Defrost and Remote Control

Entrance Door with Automatic Triple Step

Entrance Door with Automatic Triple Step in Garage\*

Fueling Station in Garage\*

Lighted Exterior Storage Compartments with Cargo Liner and Interior Master Switch

Rear Hitch for Towing Car with Two Extra 14-Gauge Wires

Acrylic Assist Handle at Entrance Door

Undercoating

Mud Flaps

Interior Features

Padded Vinyl Ceiling

Day/Night Pleated Window Shades and Valances

Mini Blinds in Bathroom and Garage Area

Vinyl Tile Flooring in Kitchen, Living Area and Bathroom

Deluxe Carpeting with High-Density Padding in Living Area and Bedroom

Interior Assist Handle at Main Entrance Door

Shoe Storage in Entrance Step Compartment

Wraparound Windshield Privacy Shade

Diamond Tread Rubber Flooring in Garage\*

Tie-Down Track in Garage\*

Plumbing & Bath Features

Demand Water System with SHURflo® Pump

Sewage Holding Tank Rinse

Water Heater Bypass

Thetford™ Aqua Magic Plus China Toilet with Wood Seat and Spray Attachment

Towel Bars and Toilet Paper Holder

ABS Shower with Glass Enclosure

Exterior Shower

Water Filter for Entire Unit

Monoplex Water Pump Switch System

Monitor Panel

Construction Features

BriteTEK™ Roof with 9mm Decking

Gelcoated Fiberglass Exterior Sides

Gelcoated Fiberglass End Caps

Aluminum-Frame Sidewalls and Roof on 16" Centers

5/8" Bead Foam Insulation Laminated in Sidewalls and Ceiling

Composite R-Values:

Roof: R-16 Floor: R-11 Sidewalls: R-11

Windows, Awnings & Vents

Double-Pane Tinted Safety Glass Windows

Fan-Tastic® Vents in Kitchen and Bathroom

Skylight in Bathroom\*

Dometic® A&E 9000 Side Awning

Slideout Covers

Two Dash Fans

\*check with dealership on floorplan availability



OPTIONAL FEATURES

Chassis Features

Workhorse™ W-22 Chassis (34' - 36' floorplans, while supplies last)\*

Air Conditioning & Heating

Two 13.5M Penguin™ Heat Pump Central Air Conditioners

13.5M Penguin™ Air Conditioner with Heat Strip and Energy Management System in Garage\*

Auxiliary Heater in Bedroom

Appliances & Accessories

30" Convection Microwave Oven with Three-Burner Cooktop

Norcold® 12 cu. ft. Four-Door Refrigerator with Icemaker\*

Whirlpool® Stainless Steel Residential Refrigerator with 2000 Watt Pure Sine Wave Invertor and Six 6V Batteries\*

Sony® Surround Sound System in Living Area

SIRIUS® Satellite Radio Capability (does not include monthly subscription)

11" Flip-Down LCD TV and DVD Player with Headphones in Each Bunk\*

Sony® LCD TV at Dry Bar\*

Sony® 32" LCD TV in Front Overhead Cabinet\*

Washer/Dryer Prep

One-Piece Washer/Dryer

Automatic Satellite Dish (does not include receiver)

CB Antenna

High-Definition Wiring

Shop Vac in Garage\*

Sony® 32" LCD TV in Garage\*

Sideview Cameras\*

Cabinets & Furniture

Empire Maple Cabinetry

Hidden-Leaf Dinette Table with Four Chairs (two fixed, two folding)\*

Round Dinette Table with Four Chairs (two fixed, two folding)\*

Hide-A-Bed Sofa\*

Luxurious Pillowtop Mattress

Sleep Number® Deluxe Air Mattress

Electronic Bunk Beds with Removable Rug in Garage\*

Electrical Features

600 Watt Inverters for Living Area and Bedroom TVs

Solar Prep

Exterior Features

Rear Ladder

Interior Features

Laminate Plank Flooring in Kitchen and Bathroom

Two Wheel Chocks in Garage\*

Windows, Awnings & Vents

Dometic® A&E WeatherPro Side Awning

Rear Window (single-pane)

Driver's Door with Power Window

Bunk Windows\*

Screen for Rear Cargo Door\*



**Ceilings: R-Value = 16**

- a. BriteTEK™ Roof
- b. 9mm Wood Decking
- c. Fiberglass Batten Insulation
- d. Total Comfort™ Ducted A/C
- e. Aluminum Roof Truss
- f. Kraft Paper Vapor Barrier
- g. 5/8" Bead Foam
- h. 3/16" Plywood Ceiling Panel
- i. Padded Vinyl Overlay

**Walls: R-Value = 11**

- j. 16" On-Center Aluminum Framing with 3 1/2" Header
- k. 3/16" Plywood Interior Wall
- l. 5/8" Bead Foam
- m. Kraft Paper Vapor Barrier
- n. Fiberglass Batten Insulation
- o. 3/16" Plywood Exterior Wall
- p. Composite One-Piece Gelcoat Exterior Sidewall

**Flooring: R-Value = 11**

- q. Carpet / Tile
- r. Carpet Padding
- s. 5/8" Floor Decking
- t. Fiberglass Batten Insulation
- u. 2" x 3" Wood Framing
- v. Polyethylene Moisture Barrier
- w. Aluminum Ducting

**EXTRA MILE Differences**

**Sikaflex® Adhesive**

Used throughout Newmar construction, Sikaflex elastic adhesive is one of the strongest bonding agents on the market today. It also serves as a sealant against dust and moisture, and dampens both sound and vibration – all for extra structural integrity and additional living comfort.

Newmar was one of the pioneers of welded aluminum-frame body construction. And unlike others, we haven't abandoned it to save a few dollars. It provides optimal location of electrical plugs and switches, because wiring is run through the wall studs – not the floor and cabinets, as with laminated-wall RVs. Stud grommets protect wiring from abrasion. But most important, the frame is lightweight, strong and durable, to maintain its integrity over miles of road jolts and vibration.



## Smooth and steady

Newmar goes the extra mile to make sure your on-the-road experience is the best it can be — with optional side cameras for added visual safety, a comfortable and functional cockpit with all your controls within easy reach, easy access to pass-through SuperStorage basement space, and much more.

Bay Star and Canyon Star are built on Ford® Class A motorhome chassis with Workhorse™ chassis\* available on some floorplans – great choices for engineering, performance, reliability and the best service. Extra heavy-duty subfloor framing and outriggers couple the coach body with the chassis to go the extra mile in ruggedness and stability on the road. And the quality full-body Masterpiece™ paint finish, worthy of top-of-the-line diesel pushers, makes your gas motorhome look like a million bucks.

Ask your dealer for a test drive so you can see and feel the difference for yourself.



Bay Star Dash



Canyon Star Dash

## EXTRA MILE Differences

### Awning Weathershields

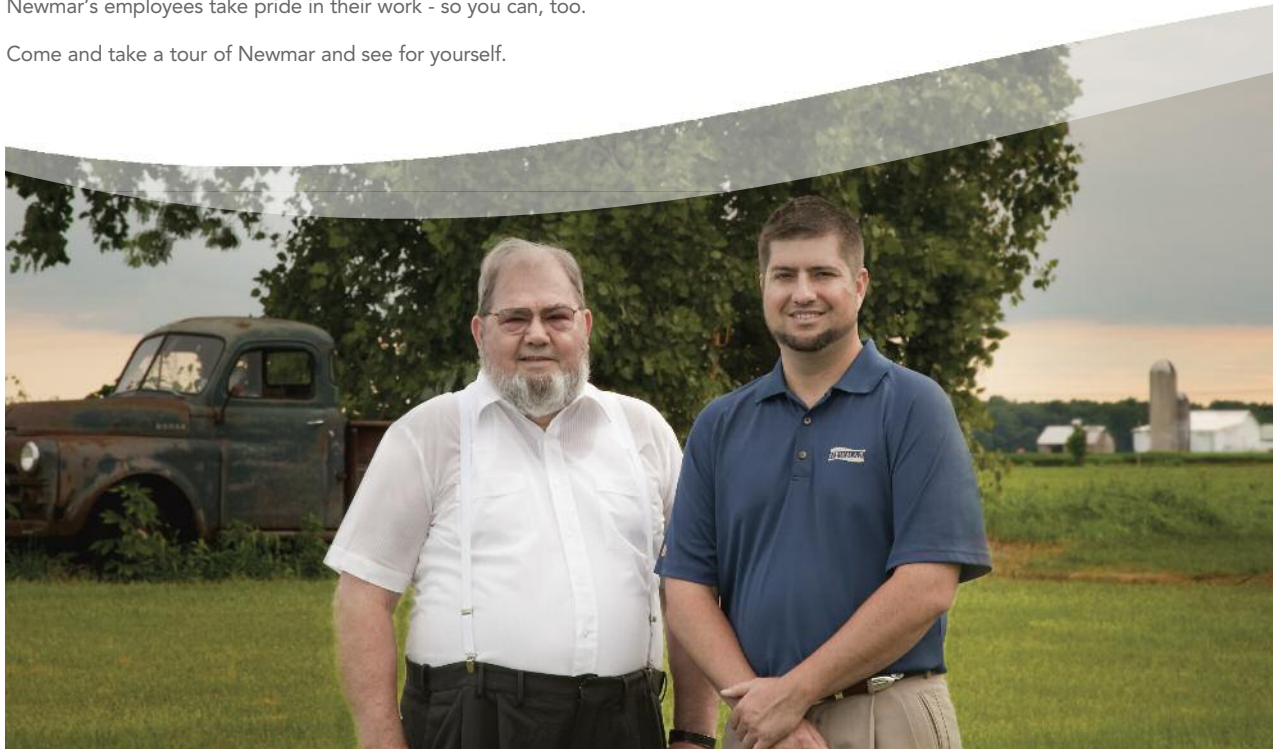
Attractive all-metal weathershields on brand-name patio and slideout awnings provide protection and color-coordinated great looks. Typically an additional-cost option on other gas motorhomes, all-metal awning weathershields are standard equipment on Bay Star and Canyon Star.

\*check with dealership on floorplan availability



## People who appreciate the value of family and neighbors.

The quietly energetic farming community of Nappanee, Indiana is home to the Miller family, the owners of Newmar, who are actively engaged in Newmar's operations and embrace the thought of employees, suppliers, dealers and customers as part of the Newmar "family." This family is significantly larger than just the six people it started out with in 1968, but continues to strive for faithfulness to the tenets of its founders. These include a strong sense of community, bearing the burdens of others, forgiveness and fairness, honesty and integrity, and peace with one's neighbors. When working with a company based on these principles, it shows in how they do business and how they build their products. Newmar's employees take pride in their work - so you can, too. Come and take a tour of Newmar and see for yourself.



Mahlon Miller, Newmar Corp. owner; Matthew Miller, Newmar Corp. president.

Your Official Newmar Dealer:



WHEN YOU KNOW THE DIFFERENCE™

**NEWMAR CORPORATION**  
355 N DELAWARE ST  
PO BOX 30  
NAPPANEE IN 46550-0030  
574-773-7791 Fax 574-773-2895

[www.newmarcorp.com](http://www.newmarcorp.com)

Some features in our literature are optional. Colors and finishes are photographic representations. The actual materials may look different. Prices, specifications and floorplans are subject to change at Newmar's discretion, without prior notice or obligation. Please see your dealer for actual samples and specifications. ©2010 Newmar Corporation. Litho in USA. NEW21700 7/10-15M

## Warranty

**Newmar Express Limited Warranty** - As proof of our commitment to you, we at Newmar back every motorhome with our industry-leading, one-year Newmar Express Limited Warranty. Ask your dealer for details.

**Limited Five-Year Structural Warranty** - If any part of your Newmar recreational vehicle superstructure (which is the steel/aluminum structure of the sidewall, roof or frame) fails to perform properly within five years from the date of purchase, due to faulty workmanship or material supplied by Newmar, it will be repaired without charge for either parts or labor by Newmar. This structural warranty is available only to the original purchaser and is non-transferrable.

## Factory Tour

We'd love to have you visit our production facility in Nappanee, Indiana, so you can see for yourself how much care and dedication we put into building every Newmar RV.

**Tour times:** Monday - Friday at 10 a.m. and 1 p.m. EST.

(Please arrive 15 minutes before the hour.)

**Check-in:** Tour area in building nine on Cheyenne Street.

**Restrictions:** No open-toed sandals; no children under 8.

**For more information:** 1-800-860-0086.

We hope to see you soon!

## Extra Mile Differences

Doing things "well enough" just isn't good enough here at Newmar. We never stop thinking about how to make every element of our products better, safer and more enjoyable. We've highlighted some of these **Extra Mile Differences** in this brochure so you can see where and how our commitment is realized – in the way your coach is built as well as the way it supports your enjoyment of life on the road.

We try to live by the Golden Rule, and we try to work by it, too. We won't settle for anything less than what's right for you – because you're not just our customer. You're our neighbor. And we truly believe in "loving your neighbor as yourself." **That's the essence of the Newmar difference.**