

~ ESSEX ~
LUXURY, WELL DESERVED

2011



WHEN YOU KNOW THE DIFFERENCE™



PURPOSEFUL ELEGANCE YOU CAN FEEL

The moment you step into the 2011 Essex, you sense a quiet luxury. But don't underestimate it. In the spaciousness of its well-appointed living area, you sink into its Villa Ultralux Leather lounges and warm to its heated porcelain floor*. With the touch of a button, blinds and lights lower to create your own home theater. The magic has just begun.

**heated electric floor is optional*



— ♦ —
*Comfort Drive™ Steering
makes handling Essex
effortless. And Sirius®
Satellite Radio makes it fun.*
— ♦ —

YOU HAVE ARRIVED.



Essex features a gourmet kitchen with High Gloss Ginger Maple Glazed hardwood cabinets and polished Corian® backsplash with inserts.*



The amenity-packed bathroom includes polished Corian® shower walls, a built-in washer/dryer* and cedar closet with shoe storage.*



Sit at your Villa dinette ensemble with powered table and thrill to your 40" Sony® LCD TV with surround sound Dolby Digital and Blu-Ray DVD player.

**optional*





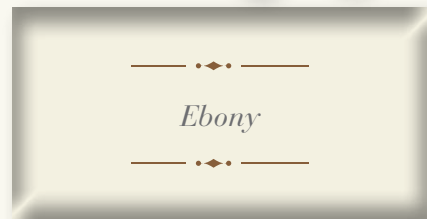
— ♦ —
*An expansive coach, with
designer feature ceiling,
polished porcelain floor,
multiplex wiring and a full
wall slide-out, lets you live
in comfort and elegance.*
— ♦ —



— ♦ —
*Your king size bed's
hardwood headboard hugs
you from pillow to ceiling.
Right in view: full
entertainment system
number two.*
— ♦ —

DECOR AND EXTERIORS THAT EXUDE QUALITY

Every Essex decor scheme offers excellent color pairings, from rich Ginger Glazed Cherry* cabinets to Full-Paint Masterpiece Finish exterior.



Milano Cherry - Standard



Rattan Glazed Maple



Ginger Glazed Cherry



Ginger Glazed Cherry w/ High Gloss



**Wood finishes are interchangeable between decor schemes.*

STANDARD FEATURES AND OPTIONS

2011 STANDARD FEATURES

CHASSIS FEATURES

- Spartan® K2 Chassis with IFS
- Cummins® ISM 500 hp
- Allison® 4000 MH Transmission
- Tag Axle
- Automatic Traction Control
- Comfort Drive™ Steering with Power Column and Adjustable Control
- Accuride® ACCU-SHIELD™ Non-Polish Aluminum Wheels
- HWH® Four-Point Hydraulic Jacks with single Touch Control and Chassis Air Leveling
- Power Tilt-and-Telescope VIP Smart Wheel® with Burl Wood
- Memory Settings for Drivers Seat, Pedals, Steering Wheel and Exterior Mirrors
- Cruise Control
- Recessed Fuel Fills with Crossover to Fill from Either Side
- Back-Up Alarm
- Anti-Lock Braking System
- Front Disc Brakes
- Electronic Chassis Information Display in Dash
- Tire Pressure Monitor System
- Chassis Service Center
- Leece-Neville 200-Amp Alternator
- 55-Degree Cramp Angle

AIR CONDITIONING & HEATING

- Three 15M Penguin™ Heat Pump Central Air Conditioners with Remote Control Thermostat
- Hydronic Zone Heating System
- Roof Air Conditioning Drainage System

APPLIANCES & ACCESSORIES

- 30" Convection Microwave Oven
- Two-Burner Recessed Cooktop
- Norcold® 17 Cu.Ft. Four-Door Refrigerator with Auto Defrost, Ice Maker and Water Dispenser
- One-Piece Washer/Dryer Prep
- Sony® 40" LCD TV in Living Area
- Sony® 40" LCD TV in Bedroom
- TripTek™ Electronic Travel Information (Displayed on Rearview Monitor)
- Sideview Cameras with Image Displayed on Rearview Monitor Screen
- Surround Sound System with CD/DVD/Blu-Ray Player
- Bose® Wave Radio with CD Player and Alarm Clock in Bedroom
- Kenwood® AM/FM/SIRIUS® Satellite Radio-ready with CD and Touch Screen Monitor (Does not include SIRIUS® Monthly Subscription)
- Garmin® Navigation System Displayed through Dash Touch Screen Monitor

- 3.5" x 11" Safe
- Pre-programmed Universal Remote Control
- High Definition component Wiring
- Blu-Ray DVD Player in Bedroom

CABINETS & FURNITURE

- Full Overlayed Raised-Panel, Double-Cathedral Cabinet Doors
- Hidden Leaf-Dinette Table with Corian® Top and Four Chairs (Two Fixed, Two Folding) *
- Polished Corian® Countertop in Kitchen with Undermounted Solid Surface Sink and Flush Sink Covers
- Polished Corian® Countertop in Bathroom with Integrated Bowl
- Polished Corian® Countertop on Bedroom Nightstands
- Residential Style Full Extension Ball Bearing Drawer Guides
- Drawers with Dove Tailed Sides
- Villa® Furniture
- Ultra Leather/Vinyl Heated Driver Seat with Eight-Way Power, Power Lumbar and Power Recline
- Ultra Leather/Vinyl Heated Passenger Seat with Eight-Way Power, Power Lumbar, Power Recline and Power Footrest
- Cedar Paneling in Rear Wardrobe
- King Bed with Hardwood Raised-Panel Bed Base

ELECTRICAL FEATURES

- 12.5 kW Cummins Onan® Diesel Quiet Generator on Hydraulic Slide and Auto Changeover
- 50-Amp Electrical Service with Flexible Cord on Power Cord Rewind Reel
- Four 6-Volt House Batteries on Pullout Tray
- 5-Watt Solar Panel
- 2,800-Watt Pure Sine-Wave Inverter with Automatic Generator Start
- Automatic Generator Start
- Midship Side Turn Signals
- Recessed Docking Lights
- Recessed Halogen Lights in Ceiling and Overhead Cabinets
- Switched Receptacle for Engine Block Heater
- Lighted Wardrobes with Automatic Switches
- NewPlex™ Wiring System
- ICC Light Flasher Switch
- Mood Lights in Lambrequins, Kitchen Valance and Bed Base
- Daylight Headlight System

EXTERIOR FEATURES

- Full-Paint Masterpiece™ Finish with Super Clear Coat & Front Protective Film
- One-Piece Bonded Windshield

- Convex Exterior Chrome Mirrors with Remote Control, Defrost and Turn Signals
- Dual latch Front Door with Power Flush Stepwell Cover
- Power Locking Baggage Doors
- 15,000 lb. Towing Hitch with Two Extra 14 Gauge Wires
- Holding Tank Levels Displayed in Exterior Water Works Compartment

INTERIOR FEATURES

- Radius Design Feature Ceiling
- Power Duo Day/Night Privacy Window Shades (Windshield and Driver/Passenger Side Windows)
- Lined Day/Night Pleated Window Shades & Lambrequins
- Polished Corian® Window Sills
- Polished Porcelain Floor Tile in Kitchen, Bathroom, Entrance Areas
- Raised-Panel Interior Passage Doors
- Power-Activated Sun Visors

PLUMBING & BATH FEATURES

- Demand Water System with Aquajet™ "ES" Pump
- Thetford™ Aria Sculptured China Stool (Thetford™ Vacuum Flush Stool in Rear Baths)
- Two Monitor Panels (One Interior & One in Exterior Water Compartment)
- MANABLOC® Plumbing System
- Monoplex Water-Pump Switches Located in Bathroom, Kitchen and Near Gate Valves
- Auto Water-Fill System
- Whole House Water Filter
- Corian® Shower with Inserts
- Power Rewind Water-Hose Reel

CONSTRUCTION FEATURES

- Power Lock Arms on All Slideout Rooms.

WINDOWS, AWNINGS, & VENTS

- Frameless, Double-Pane Tinted Safety-Glass Windows
- Fan-Tastic® Vent with Rain Sensor in Kitchen Area and Bathroom
- Driver's-Side Power Window
- Girard® Power Bedroom and Slideout Window Awnings
- Two Girard® Integrated Power Box Side Awnings with Remote Controls
- Girard® Power Front Entrance Door Awning
- Keyless Entry with Doorbell and Touch Pad

2011 OPTIONAL FEATURES

AIR CONDITIONING & HEATING

- Electric Heat under Floor Tile in Kitchen, Bath and Living Areas*

APPLIANCES & ACCESSORIES

- GE® 30" Profile Advantium™ Microwave Oven
- Norcold® Freezer on Pullout Tray
- Stackable Washer/240-Volt Dryer in Full Length Cabinet *
- Fisher & Paykel DishDrawer®*
- All-Electric Unit with Frigidaire® Refrigerator and Four Extra Batteries *
- Sony® 40" LCD TV in Front Overhead Cabinet with Navigation System Connection*
- Remote-Controlled Rearview Color Camera
- Sideview Cameras with Image Displayed on Rearview Monitor Screen
- External Entertainment Center with Sony® 32" LCD TV, AM/FM Radio and CD Player on Adjustable Swing Arm
- KVH R-6 In-Motion Satellite without Receiver
- Central Vacuum with Deluxe Tool Kit
- Security System
- CB Radio with Antenna

CABINETS & FURNITURE

- Ginger Glazed Cherry Hardwood Cabinets
- Milano Cherry Hardwood Cabinets
- Rattan Maple Glazed Hardwood Cabinets
- Ginger Glazed Cherry Hardwood Cabinets with High-Gloss Finish
- Ultra Leather Hide-A-Bed Sofa with Air mattress/Dinette Ensemble with Two Folding Chairs*
- Two Leather/Vinyl Recliners*
- Sleep Number® Air Mattress for Main Bed

ELECTRICAL FEATURES

- Roof-Mounted Spot Light
- AGM Batteries

EXTERIOR FEATURES

- Large Storage Tray with Access from One Side or Either Side
- Power Sliding Storage Tray

INTERIOR FEATURES

- Polished Porcelain Floor Tile Throughout
- Power Duo Day/Night Window Shade System throughout Living Area

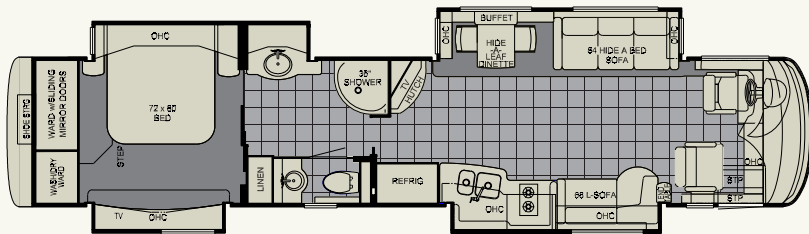
PLUMBING & BATH FEATURES

- Assist Handle in Tub/Shower

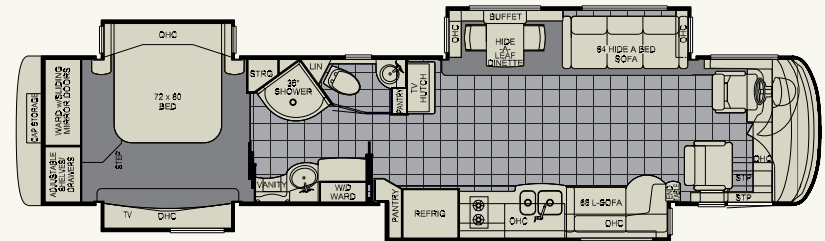
*CHECK WITH DEALERSHIP ON FLOORPLAN AVAILABILITY AND COMPLETE LISTING OF FEATURES.

FLOORPLANS FIT FOR AN ESSEX

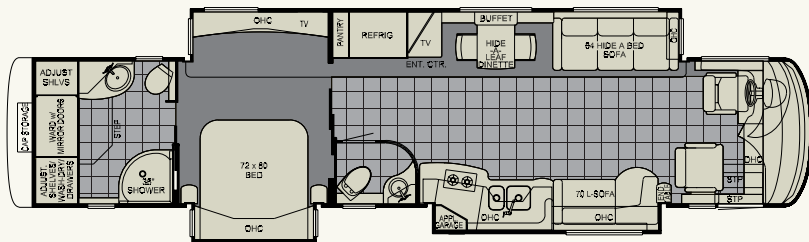
The 2011 Essex has been carefully designed for your every convenience, on the road and at rest. Select your floorplan. Then simply choose your options and finishes.



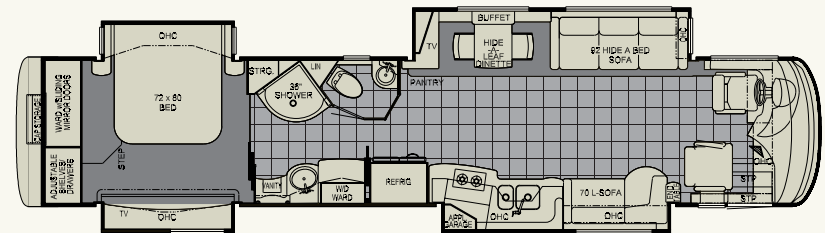
4517



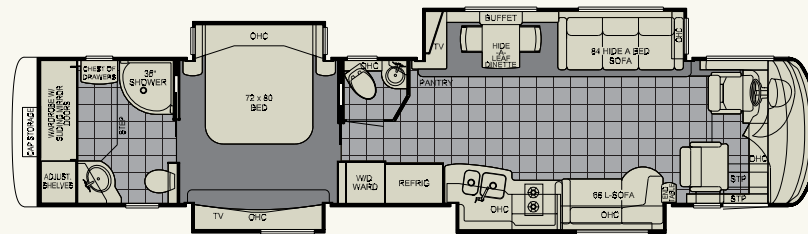
4522



4524



4532



4538

FINE QUALITY ESSEX CONSTRUCTION

The Spartan K2 chassis has set the standard in the marketplace for its strength and power. It is equipped with a powerful Cummins ISM 500 Hp engine, plus a brawny 16,600 lb. IFS (Independent Front Suspension). The K2 chassis allows you to pass other drivers on a steep incline with ease. And the K2 will allow you to maneuver the motorcoach like a pro. Handle tight turns with perfect precision. Nothing can get in your way when you are equipped with a Spartan K2 under your coach. For peace of mind, there is a roadside assistance program for its entire warranty period.



ROOF R-VALUE = 16

- a. Fiberglass Roof
- c. Fiberglass Batten Insulation
- d. A/C Ducting
- e. Aluminum Rafter Framing
- f. Kraft Paper Vapor Barrier
- g. 5/8" Bead Foam
- h. 3/16" Panel
- i. Padded Vinyl Overlay

SIDEWALL R-VALUE = 11

- j. 3/16" Plywood Interior Wall
- k. 5/8" Bead Foam
- l. Kraft Paper Vapor Barrier
- m. Fiberglass Batten Insulation
- n. 3/16" Plywood Exterior Wall
- o. Composite One-Piece Gelcoat Exterior Sidewall
- p. Aluminum Framing with 3 1/2" Header Above

FLOOR R-VALUE = 16

- q. Carpet/Tile
- r. Carpet Padding
- s. 5/8" Floor Decking
- t. Fiberglass Batten Insulation
- u. 2"x 3" Wood Framing
- v. Polyethylene Moisture Barrier

BASEMENT R-VALUE = 4

- y. Cargo Liner
- z. 3/8" Floor Decking
- aa. 3/16" Luan Panel
- bb. 1 1/2" Bead Foam
- cc. Aluminum Sheeting with Steel Support Rails to Prevent Bowing and Flexing

1. 15M Penguin™ Heat Pump Central Air Conditioners (3)
2. One-Piece Bonded Windshield
3. Coated Aluminum Wheels
4. Frameless, Double-Pane, Tinted Safety-Glass Windows
5. Side-Hinged Baggage Doors with Optional Storage Tray

FLOORPLAN SPECIFICATIONS

Floorplan	App. Overall Length	Width	App. Overall Height	Interior Width	Interior Height	Grey	Sewage	Water	Propane	Furnace
4517	44' 11"	101.5"	12' 10"	95.5"	84"	65 gal.	45 gal.	105 gal.	32 gal.	50,000 Btu
4522	44' 11"	101.5"	12' 10"	95.5"	84"	65 gal.	45 gal.	105 gal.	32 gal.	50,000 Btu
4524	44' 11"	101.5"	12' 10"	95.5"	84"	65 gal.	45 gal.	105 gal.	32 gal.	50,000 Btu
4532	44' 11"	101.5"	12' 10"	95.5"	84"	65 gal.	45 gal.	105 gal.	32 gal.	50,000 Btu
4538	44' 11"	101.5"	12' 10"	95.5"	84"	65 gal.	45 gal.	105 gal.	32 gal.	50,000 Btu

NEWMAR EXPRESS LIMITED WARRANTY

Every Essex Diesel Pusher is backed by Newmar's one-year limited warranty/unlimited miles. Ask your Newmar dealer for details.

LIMITED FIVE-YEAR STRUCTURAL WARRANTY

If any part of your Newmar recreational vehicle superstructure (which is the steel/aluminum structure of the sidewall, roof or frame) fails to perform properly within five years from the date of purchase because of faulty workmanship or material supplied by Newmar, it will be repaired without charge for either parts or labor by Newmar. This structural warranty is available only to the original purchaser and is non-transferable.

CHASSIS SPECIFICATIONS

Floor-plan	Engine HP	Axle Ratio	Fuel Cap.	Wheelbase	Front GAWR*	Rear GAWR*	Tag GAWR*	GVWR*	GCWR*	App. UVW	App. NCC
4517	500	4.33	150 gal.	296" + TAG	16,600 lb.	20,000 lb.	10,000 lb.	46,600 lb.	61,600 lb.	40,600 lb.	6,000 lb.
4522	500	4.33	150 gal.	296" + TAG	16,600 lb.	20,000 lb.	10,000 lb.	46,600 lb.	61,600 lb.	40,900 lb.	5,700 lb.
4524	500	4.33	150 gal.	296" + TAG	16,600 lb.	20,000 lb.	10,000 lb.	46,600 lb.	61,600 lb.	41,200 lb.	5,400 lb.
4532	500	4.33	150 gal.	296" + TAG	16,600 lb.	20,000 lb.	10,000 lb.	46,600 lb.	61,600 lb.	40,800 lb.	5,800 lb.
4538	500	4.33	150 gal.	296" + TAG	16,600 lb.	20,000 lb.	10,000 lb.	46,600 lb.	61,600 lb.	41,000 lb.	5,600 lb.

Lengths, heights, widths and dry weights are approximate. Weight will vary based on optional equipment added to the above base weight.

GAWR: Gross Axle Weight Rating is the maximum permissible weight for an axle.

GVWR: Gross Vehicle Weight Rating is the maximum permissible weight for a fully loaded motor coach.

GCWR: Gross Combination Weight Rating is the value specified by the manufacturer of the vehicle as the maximum allowable loaded weight of this motor coach and any towed trailer or towed vehicle.

UVW: Unloaded Vehicle Weight is the weight of this motorcoach as built at the factory with full fuel, engine oil and coolants. The UVW does not include cargo, fresh water, propane gas or dealer-installed accessories.

NCC: Net Carrying Capacity is the maximum weight of all occupants, including the driver, personal belongings, food, fresh water, waste water, propane gas, tools, tongue weight of towed vehicle, dealer-installed accessories, etc., that can be carried by the motorcoach.

*Specifications supplied by the chassis manufacturer.



Comfort Drive
STEERING





➤ A M E M O R A B L E F I N I S H ➤

Established over 40 years ago, Newmar is an innovator and leader in the RV manufacturing industry. Its quality craftsmanship is recognized nationally. The Newmar dealer network spans across the United States and Canada.

Please be our guest for a Newmar factory tour. Call 1-800-860-0086 to learn more.

(Please affix dealer stamp in this area.)

The Newmar Kountry Klub is an exclusive club for owners of fine Newmar products that offers many advantages and benefits to its members. Learn more at www.newmarkountryklub.com.

www.newmarcorp.com

NEWMAR CORPORATION • 355 N DELAWARE ST • PO BOX 30 • NAPPANEE IN 46550-0030

574-773-7791 • Fax 574-773-2895