



WHEN YOU KNOW THE DIFFERENCE

diesel: standard
luxury:
standard
sticker shock:
unavailable



You get all the space
of a residential
French style
3-door stainless
refrigerator.* And
the pull-out freezer
means last minute
entertaining is
effortless. **optional*





(left) This kitchen is a dream – with polished Corian countertop and backsplash with stainless steel trim. Hand glazed Empire Maple cabinets* glow from breakfast to late night snack. *optional finish

(far left, center) Dinner is served on your polished Corian expandable* dinette table. Built-in storage and buffet shelf make meals quick to set up and clean up, too. A hidden leaf creates seating for up to four.

STEP UP to a quality diesel motor coach with the 2011 Ventana. You get all the good stuff: Corian®, fine design touches and a powerful diesel pusher. You'll be making a smart decision with this gorgeous totally redesigned coach.

Your Ventana's gorgeous main living space is set off with traditional design touches in hand finished cabinetry. Polished porcelain flooring, newly designed window treatments and polished solid Corian® countertops make for a place you can really call home. So ease back at the end of the day. The luxury of your Ultralux leather-covered Flexsteel® lounges awaits.

a luxury
motor home
full of
handcrafted
comforts.

THE WARMTH and beauty of fine linen and rich cabinetry have been thoughtfully combined to create your ultimate relaxation zone. This is the luxurious bedroom you have been waiting for.

You'll love the radius corner king size bed that comes standard in the richness of your Ventana bedroom suite. And a Sony flatscreen TV entertainment system makes it even sweeter.*

**optional*





Lay back and enjoy your favorite movies on your bedroom's 32" Sony® TV with DVD player.

Ventana boasts bathroom luxuries like a polished Corian counter top – with an integrated bowl – and a Corian backsplash. Plus an extra roomy shower, fitted with a radius glass door.



all new.
and best of all,
all yours.

VENTANA'S RESTYLED dash and cockpit put you in control – and with the easy handling of Comfort Drive™ Steering, you can relax in your supple Ultralux leather captain's chair. It's amazing what you get with the new Ventana, redesigned from cockpit to rear.



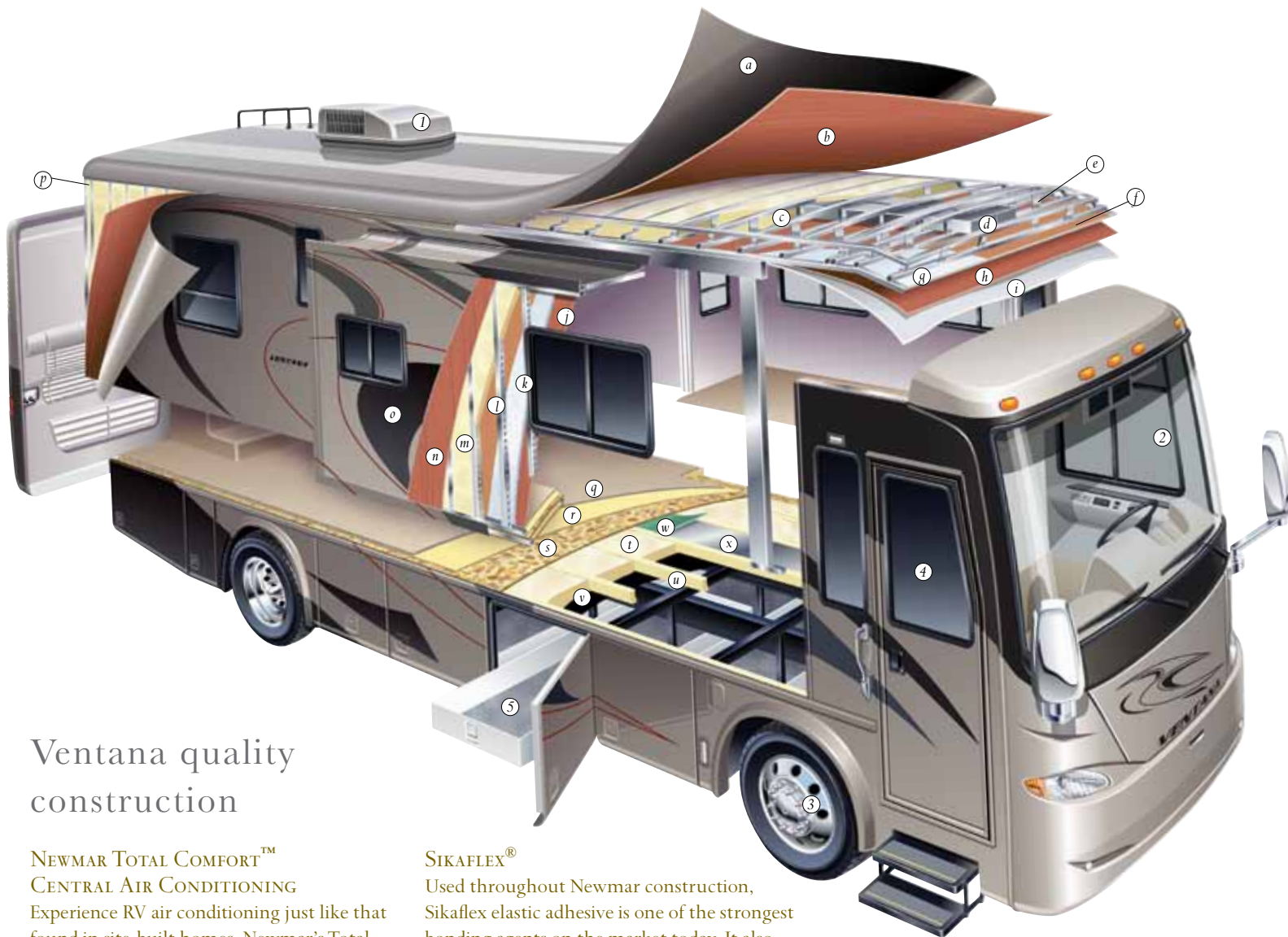
(left) This vertically stacked, line of sight gauge structure just next to the windshield makes informed driving effortless.



Ventana's VIP® Smart Wheel puts the controls right at your fingertips. And you'll always know where you're going with color dual monitors for GPS and rear viewing.

(right) Now movie night can move outdoors. With Ventana's new optional external Sony® 40" LCD flatscreen TV/entertainment center with Sony AM/FM radio, CD player and two speakers. The television, mounted on an adjustable arm on the inside wall of the coach, can be accessed easily through a secure panel. *floorplan specific





Ventana quality construction

NEWMAR TOTAL COMFORT™ CENTRAL AIR CONDITIONING
Experience RV air conditioning just like that found in site-built homes. Newmar's Total Comfort Central Air Conditioning is actually two separate, fully ducted systems: one to distribute incoming cool air, the other to quickly and effectively remove warm air from every living area.

PROTECTED C-CHANNELS
To keep the electrical wiring that runs through holes in the aluminum-frame C-channels from chafing, each hole is ringed with a plastic grommet.

SIKAFLEX®
Used throughout Newmar construction, Sikaflex elastic adhesive is one of the strongest bonding agents on the market today. It also serves as a sealant against air and water. And it helps dampen both sound and vibration.

16" ON-CENTER FRAMING
Just like a fine site-built residential home, your Newmar home is framed 16 inches on center, which allows the best placement of outlets, switches and other components.

Ceilings : R-value=16

- a. BriteTEK™ Roof
- b. 9mm Wood Decking
- c. Fiberglass Batten Insulation
- d. A/C Ducting
- e. Aluminum Roof Truss
- f. Kraft Paper Vapor Barrier
- g. 58" Bead Foam
- h. 3/16" Panel
- i. Padded Vinyl Overlay

Walls : R-value=11

- j. 3/16" Plywood Interior Wall
- k. 58" Bead Foam
- l. Kraft Paper Vapor Barrier
- m. Fiberglass Batten Insulation
- n. 3/16" Plywood Exterior Wall
- o. Composite One-piece Gelcoat Exterior Sidewall
- p. 16" On-center Aluminum Framing with 3 1/2" Header

Flooring : R-value=16

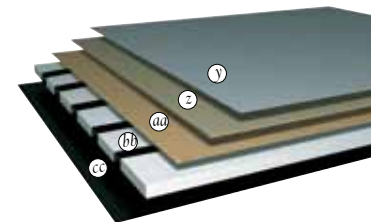
- q. Carpet/Tile
- r. Carpet Padding
- s. 58" Floor Decking
- t. Fiberglass Batten Insulation
- u. 2" x 3" Wood Framing
- v. Polyethylene Moisture Barrier
- w. Foam Panels (Noise Protection)
- x. Aluminum Ducting

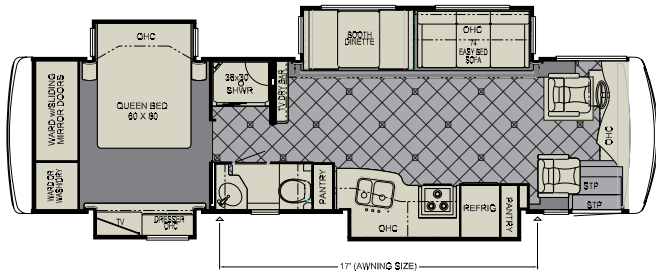
Basement : R-value=4

(included in Floor R-value)

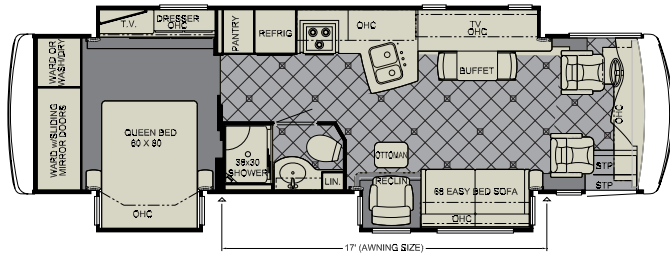
- y. Cargo Liner
- z. 38" Floor Decking
- aa. 3/16" Luan Panel
- bb. 1 1/2" Bead Foam
- cc. Aluminum Sheeting (Prevents Distortion)

1. 13.5M Penguin™ Heat Pump Central Air Conditioners (2)
2. One-piece Windshield
3. Coated Aluminum Wheels
4. Double-pane Tinted Safety-glass Windows
5. Side-hinged Baggage Doors with Optional Pullout Tray

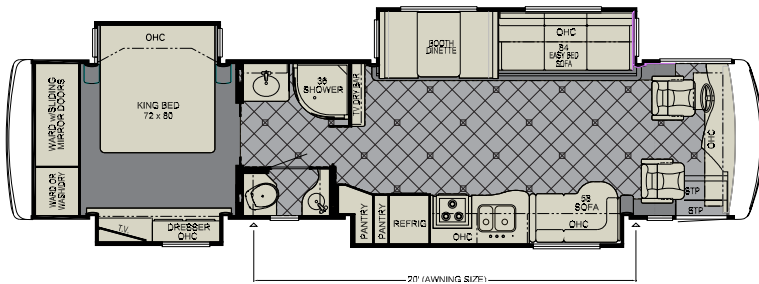




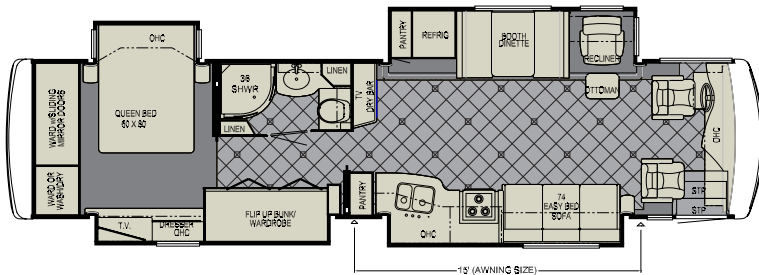
3433



3434



3934



3943



outfit yourself
for the road
with what
you'll save

VENTANA'S FLOOR PLANS
and decor packages* offer you
timeless designer styling
with traditional touches.
So you can truly make your
Ventana your own.



Baltic Beech

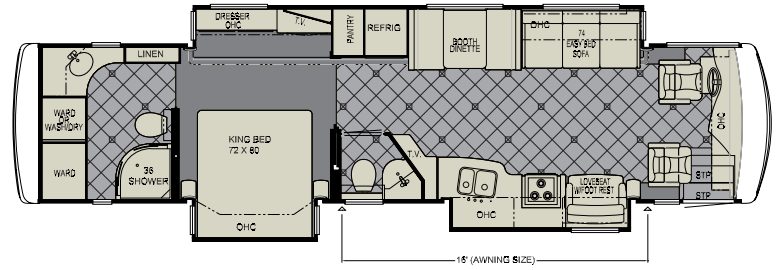


Empire Maple

*Wood finishes are interchangeable
with any decor package.



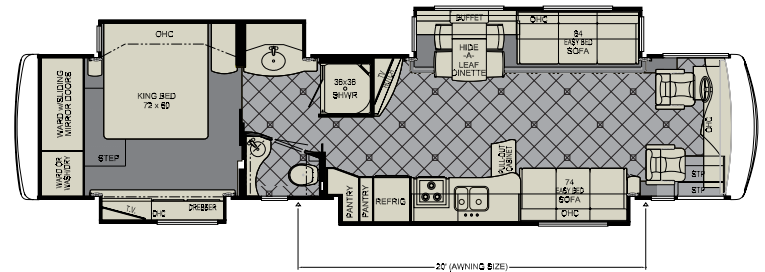
Cafe Latte



3962



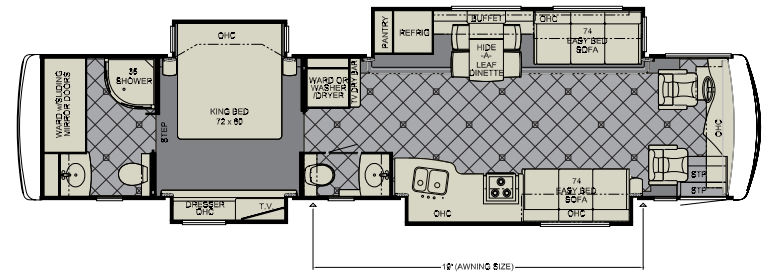
Mysteria



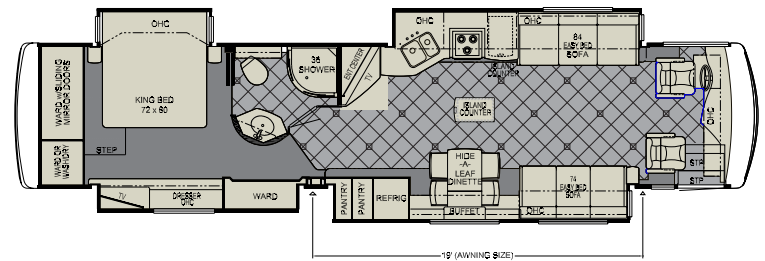
4333



Russet



4335



4386

standard features and options

2011 STANDARD FEATURES

CHASSIS FEATURES

- Freightliner® Chassis
- Cummins® ISC 350 HP with engine exhaust brake on 34-39ft floorplans
- Cummins® ISB 360 HP with two stage compression brake on 43ft floorplans
- Two Stage Compression Brake
- Polished Aluminum Wheels
- Cruise Control
- Comfort Drive™ Steering With Adjustable Control
- Manual Tilt and Telescope Steering Column with VIP Smart Wheel
- Recessed Fuel Fills with Crossover to Fill from Either Side
- Back-Up Alarm
- Anti-Lock Braking System
- Electric Leveling Jacks with Automatic Control on 34-39ft floorplans
- Hydraulic Leveling Jacks with Single Touch Control on 43ft floorplans

AIR CONDITIONING & HEATING

- Two 13.5M Penguin™ Heat Pump Central Air Conditioners
- Propane Furnace with In-Floor Ducted Heat*
- Propane Hydronic Zone Heating System with Continuous Hot Water*
- Dash Heater & High-Output Air Conditioner
- Propane Leak Detector
- Wall Mounted Sensors for Heating and Air Conditioning

APPLIANCES & ACCESSORIES

- 30" Convection Microwave Oven
- Three-burner Cooktop with Piezo Ignition
- Polished Corian® Range Cover
- Norcold® 10 Cu. Ft. Refrigerator
- 10 gal. Gas/Electric Water Heater with Direct-Spark Ignition*
- One-Piece Compact Washer/Dryer Prep *
- Sony® 32" or 40" LCD TV in Living Area *
- Sony® 32" LCD TV in Bedroom
- AM/FM Dash Radio with MP3 Adapter and CD Player
- Sony® Surround Sound System with Single Disc DVD Player
- Rearview Color Monitor System
- Sony® DVD Player in Bedroom

CABINETS & FURNITURE

- Baltic Beech Cabinetry with Raised Panel Glazed Doors
- Polished Corian® Countertop in Kitchen with Undermounted Acrylic Sink and Flush Sink Covers
- Corian® Countertop in Bathroom with Integrated Sink
- Corian® Countertops on Nightstands, Dressers and Chest of Drawers

- Adjustable Pullout Pantry Shelves *
- Residential Style Full Extension Ball Bearing Drawer Guides
- Flexsteel® Ultralux Leather Furniture
- Ultralux Leather Driver/Passenger Seats with Six-Way Power, Power Lumbar, Ergo-Flex Arms
- Ultralux Leather Loveseat with Footrest*
- King Bed with Quilted Bedspread, Shams and Accent Pillows*
- Pullout Step-stool with Storage in Bathroom

ELECTRICAL FEATURES

- 8.0 kW Cummins Onan® Diesel Quiet Series Generator
- 50 Amp Electrical Service with Flexible Cord
- Four 6 Volt House Batteries on Pullout Tray
- Battery Disconnect Switch
- 110 Volt Exterior Receptacle
- 5 Watt Solar Panel
- 2000 Watt Inverter
- Emergency Start Switch
- Exterior Security Light on Doorside
- Midship Side Turn Signals
- Fluorescent Lights in Ceiling and Overhead Cabinets
- Slideout Information Voice Module
- Manually Operated Hold-To-Run Slideout Switch
- ICC Light Flasher Switch
- 12 Volt Auxiliary Receptacle on Dashboard
- Exterior TV Jack
- Interior Courtesy Lights

EXTERIOR FEATURES

- Full-Paint Masterpiece Finish™ with Front Protective Film
- One-piece Bonded Windshield
- Convex Exterior Mirrors with Remote Control, Defrost and Turn Signals
- Entrance Door with Automatic Double Step
- Power Flush Stepwell Cover
- Lighted Exterior Storage Compartments with Cargo Liner, Controlled by Interior Master Switch
- Rear Hitch for Towing Car with Two Extra 14 Gauge Wires
- Lighted Acrylic Assist Handle at Entrance Door
- Mud Flaps
- Rear Protective Full-width Tow Guard
- Rear Ladder
- Undercoating

INTERIOR FEATURES

- Padded Vinyl Ceiling
- Day/Night Pleated Window Shades & Lambrequins
- Mini Blinds in Bathroom
- Polished Porcelain Floor with Tile Inserts in Kitchen, Bathroom and Living Area
- Deluxe Carpeting with High Density Padding in Living Room and Bedroom

- Day/Night Privacy Shades on Driver/Passenger Side Windows
- Power Sun Shades and Manual Night Shades for Windshield

PLUMBING & BATH FEATURES

- Demand Water System with SHURflo® Pump
- Sewage Holding-Tank Rinse
- Water Heater Bypass System*
- Thetford™ Aqua Magic Plus China Stool with Wood Seat and Spray Attachment
- Monitor Panel
- Monoplex Water Pump Switch System
- Radius Shower with Glass Door*
- Water Filter with Drink Dispenser at Kitchen Sink
- Water Filter for Entire Unit

CONSTRUCTION FEATURES

- BriteTEK™ Roof with 9MM Decking
- Gelcoated Fiberglass Exterior Sides
- Gelcoated Fiberglass Front and Rear Caps
- Aluminum-Frame Sidewalls & Roof Construction, 16" on Center
- 5/8" Foam Insulation Laminated in Sidewalls & Ceiling
- Roof R-Value Rating: 16
- Sidewall R-Value Rating: 11
- Floor R-Value Rating: 16
- Basement R-Value Rating: 4 (included in Floor R-Value)

WINDOWS, AWNINGS, & VENTS

- Double-Pane Tinted Safety-Glass Windows
- Fan-Tastic® Vent with Rain Sensor in Kitchen and Bathroom Areas
- Skylight in Bathroom *
- A & E® 9000 Side Awning
- A & E® Oasis Manual Front Entrance Door Awning
- A & E® Slideout Awning Covers
- Cockpit Overhead Ventilation System

2011 OPTIONAL FEATURES

AIR CONDITIONING & HEATING

- Hydronic Zone Propane Heating System*
- 3-15M Penguin Heat Pump Air Conditioner and Energy Management System*

APPLIANCES & ACCESSORIES

- Norcold® 12 Cu. Ft. Four-Door Refrigerator with Icemaker*
- GE® Stainless Steel Residential Refrigerator with Icemaker and Water Dispenser, includes 2000 Watt Pure Sine Inverter & 2 Extra Batteries
- Icemaker Added to Refrigerator *
- One-Piece Washer/Dryer *
- Two-Piece Washer/Dryer*

- Sirius Satellite Radio Capability (Does not include monthly subscription)
- Sony® 32" LCD TV in Front Overhead*
- External Entertainment Center in Sidewall with Sony® 40" LCD TV*
- External Entertainment Center in Storage Compartment with Sony® 32" LCD TV*
- Automatic Satellite without Receiver
- In-Motion Satellite without Receiver
- High Definition Wiring
- Entertainment Center with Relocated Std. Living Area TV and Surround Sound System
- Sideview Cameras
- CB Radio with Antenna
- CB Antenna
- Pre-programmed Universal Remote Control
- Dash Radio/CD Player with Portable Tom Tom® Navigation System and MP3 Adapter

CABINETS & FURNITURE

- Empire Maple Cabinets with Raised Panel Glazed Doors
- Hide-A-Bed Sofa with Air Mattress*
- Hidden Leaf Dinette Table With Four Chairs and Larger Dinette Window*
- Round Hardwood Dinette Table with Four Fixed Chairs and Larger Dinette Window *
- Sleep Number Deluxe® Air Mattress
- Power Footrest on Passenger Seat
- Combination Desk/Dinette Table with Two Fixed Chairs and Two Folding Chairs *

ELECTRICAL FEATURES

- Energy Management System

EXTERIOR FEATURES

- Large Chrome Exterior Mirrors
- Large Storage Tray with Access from One Side or Either Side *

INTERIOR FEATURES

- Halogen Lighting
- Floor Tile Extended into Bedroom Area

PLUMBING & BATH FEATURES

- 110 Volt Heat Pads for Holding Tanks

WINDOWS, AWNINGS, & VENTS

- A & E® 9000 Bedroom & Slideout Window Awning
- A & E® Weather Pro Side Awning & Oasis Power Front Entrance Door Awning

floorplan specifications

Floorplan	App. Overall Length	Width	App. Overall Height	Interior Width	Interior Height	Grey	Sewage	Water	Lp	Furnace
3433	34' 10"	101.5"	12' 5"	95.5"	84"	65 gal.	45 gal.	105 gal.	32 gal.	35,000 Btu
3434	34' 10"	101.5"	12' 5"	95.5"	84"	65 gal.	45 gal.	105 gal.	32 gal.	35,000 Btu
3934	39' 8"	101.5"	12' 5"	95.5"	84"	65 gal.	45 gal.	105 gal.	32 gal.	40,000 Btu
3943	39' 8"	101.5"	12' 5"	95.5"	84"	65 gal.	45 gal.	105 gal.	32 gal.	40,000 Btu
3962	39' 8"	101.5"	12' 5"	95.5"	84"	65 gal.	45 gal.	105 gal.	32 gal.	40,000 Btu
4333	42' 10"	101.5"	12' 6"	95.5"	84"	65 gal.	45 gal.	105 gal.	32 gal.	55,000 Btu
4335	42' 10"	101.5"	12' 6"	95.5"	84"	65 gal.	45 gal.	105 gal.	32 gal.	55,000 Btu
4386	42' 10"	101.5"	12' 6"	95.5"	84"	65 gal.	45 gal.	105 gal.	32 gal.	55,000 Btu

chassis specifications

Floorplan	Engine HP	Axle Ratio	Fuel Cap	Wheelbase	Front GAWR*	Rear GAWR*	TAG GAWR*	GVWR*	GCWR*	Appr. UVW	Appr. NCC
3433	350	4.63	100 gal.	206"	12,000 lb.	20,000 lb.	0	32,000 lb.	42,000 lb.	24,000 lb.	8,000 lb.
3434	350	4.63	100 gal.	206"	12,000 lb.	20,000 lb.	0	32,000 lb.	42,000 lb.	25,600 lb.	6,400 lb.
3934	350	4.63	100 gal.	264"	14,000 lb.	20,000 lb.	0	34,000 lb.	44,000 lb.	26,400 lb.	7,600 lb.
3943	350	4.63	100 gal.	264"	14,000 lb.	20,000 lb.	0	34,000 lb.	44,000 lb.	26,600 lb.	7,400 lb.
3962	350	4.63	100 gal.	264"	14,000 lb.	20,000 lb.	0	34,000 lb.	44,000 lb.	26,900 lb.	7,100 lb.
4333	360	4.63	100 gal.	269" + TAG	14,000 lb.	20,000 lb.	10,000 lb.	44,000 lb.	54,000 lb.	30,900 lb.	13,100 lb.
4335	360	4.63	100 gal.	269" + TAG	14,000 lb.	20,000 lb.	10,000 lb.	44,000 lb.	54,000 lb.	30,900 lb.	13,100 lb.
4386	360	4.63	100 gal.	269" + TAG	14,000 lb.	20,000 lb.	10,000 lb.	44,000 lb.	54,000 lb.	30,900 lb.	13,100 lb.

Lengths, heights, widths and dry weights are approximate. Weight will vary based on optional equipment added to the above base weight.

GAWR: Gross Axle Weight Rating is the maximum permissible weight for an axle.

GVWR: Gross Vehicle Weight Rating is the maximum permissible weight for a fully loaded motor coach.

GCWR: Gross Combination Weight Rating is the value specified by the manufacturer of the vehicle as the maximum allowable loaded weight of this motor coach and any towed trailer or towed vehicle.

UVW: Unloaded Vehicle Weight is the weight of this motorcoach as built at the factory with full fuel, engine oil and coolants. The UVW does not include cargo, fresh water, propane gas or dealer-installed accessories.

NCC: Net Carrying Capacity is the maximum weight of all occupants, including the driver, personal belongings, food, fresh water, waste water, propane gas, tools, tongue weight of towed vehicle, dealer-installed accessories, etc., that can be carried by the motorcoach.

*Specifications supplied by the chassis manufacturer.



peace of mind is built in.

Established over 40 years ago, Newmar is an innovator and leader in the RV manufacturing industry. Its quality craftsmanship is recognized nationally. The Newmar dealer network spans across the United States and Canada.

Newmar Corporation • 355 N. Delaware St • PO Box 30
Nappanee IN 46550-0030 • 574-773-7791 • Fax 574-773-2895

The Newmar Kountry Klub is an exclusive club for owners of fine Newmar products that offers many advantages and benefits to its members. Learn more at www.newmarkountryklub.com. Please be our guest for a Newmar factory tour. Call 1-800-860-0086 to learn more.

WWW.NEWMARCORP.COM

