

Essex

NEWMAR

2012 | ESSEX  
A REDISCOVERY OF THE SENSES



**SHE'S A BEAUTY.**

Essex will astound you with an all new exterior – including a hefty chrome grill and newly styled headlights. Its signature Newmar Full-Paint Masterpiece™ Finish and Super Clear Coat are standard, of course.

## 2012 ESSEX LUXURY MOTOR COACH

**YOUR PULSE QUICKENS. YOUR PUPILS DILATE.**  
(WITH THE ALL NEW ESSEX, THAT'S NORMAL.)

The all new 2012 Essex comes with unmatched Newmar craftsmanship and attention to detail – standard. All of Essex's traditional rich visual notes remain strong. Yet a quickening of the senses abounds, from ultra suede window surrounds to shimmering glass and marble tiles to burled wood insets. From hand polished hardwoods to opulent Ultralux Leather to a newly designed chrome grill, Essex sparks a heightened response. And its 500 HP diesel power takes your breath away. So take it all in. If you can handle it.





SPACIOUS LIVING





## THE ONE COACH THAT REALLY FEELS LIKE A COACH.

You might think you've stepped into a fairy tale. But all the amenities of this coach are real. Like double sinks and medicine cabinets. Wider entry doors and taller baggage doors. A residential size shower. Polished tiles in porcelain, marble and glass throughout the coach. Even burled wood insets in the bedroom. Pinch yourself. It's still here

### SHEDDING NEW LIGHT

Essex' dinette window just grew wider – to match its living room window. Spanning them, an ultra suede and hardwood window treatment. All of this sheds new light onto an up to date blue and brown interior with softly curved hardwood cabinets and newly designed hardware.

### LUXURIOUS EASE

Polished randomly patterned porcelain tiles add to the luxurious ease of Essex' main cabin. UltraLux Leather gives you the lounge space you need. Polished Corian™ countertops give you the easy function you want. Your 40" Sony® LCD TV with Surround Sound Dolby Digital and Blu-Ray DVD player rocks. And above you, the Essex signature designer ceiling.





ELEGANT KITCHEN

## AT EVERY TURN, THIS KITCHEN INVITES YOU IN.

Let there be no mistake about it. This is the kitchen you will both want to spend time in. Including artfully designed hand rubbed hardwood cabinets with a softly rounded profile, a glowing designer backsplash and residential stainless appliances to finish it all off.



STYLISH BASKET WEAVE BACKSPLASH

### TOP

Don't miss the basket weave patterned glass tile backsplash with tumbled marble inserts. It is truly a work of art.

### RIGHT

The bolstered UltraLeather® dinette ensemble features a powered table to make table height customizable.







SLEEP NUMBER BED\*



BURLED WOOD HEADBOARD



BEDROOM DRESSER





## BEDROOM

A king size Sleep Number Bed\* is one thing. But getting one with an elegant burl wood headboard insets is really quite fantastic. Don't worry. Your 40" Sony flatscreen TV with Bose Wave® surround sound and Blu Ray will bring you back to reality. Or will they?

\*optional



SHOWER



VANITY

## BATHROOM

The Essex master bath is not to be believed. Check out its 40" x 32" residential shower with Corian® walls and flat glass tile inserts. With its optional teak shower seat, you'll want to take longer to admire it all. And you get double sinks with a polished solid Corian® counter – plus double medicine cabinets.

## RICHNESS FROM EVERY ANGLE.

The all new 2012 Essex's exterior is just as rich as its interior, with touches of metallic paint and Newmar's famous Full-Paint Masterpiece™ Finish and Super Clear Coat. Absolutely gorgeous!



NEW FRONT GRILL



ENTRY STAIRS





COMFORT DRIVE™ EQUIPPED



ULTRALUX LEATHER CHAIR



NEW HEADLIGHT ASSEMBLY

## DRIVE WITH A LIGHT TOUCH. COMFORT DRIVE IS STANDARD.

Comfort Drive,<sup>™</sup> another exclusive Newmar innovation, means less effort turning the wheel when you back up or turn. The steering wheel returns to center automatically, even after hard turns. And with Comfort Drive,<sup>™</sup> you steer with a light grip, making long trips less tiring.

### COMPLETE CONTROL

Essex's Comfort Drive<sup>™</sup> Steering makes it easy to steer effortlessly. And Xite Radio with Nav-N-Go System puts you in complete control.

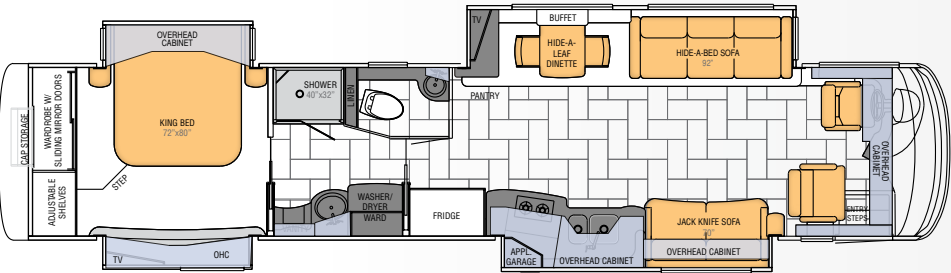
### PLEASURE

A wider entry door makes entering your gorgeous Essex cabin easier and taller baggage doors make packing a pleasure.

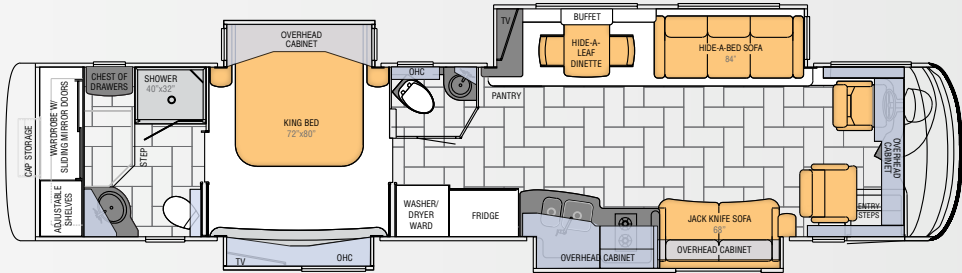


**Comfort Drive<sup>™</sup>**  
BY NEWMAR

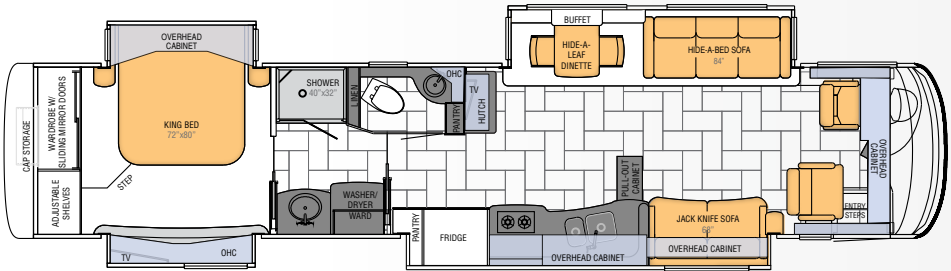
INTELLIGENT FLOOR PLANS



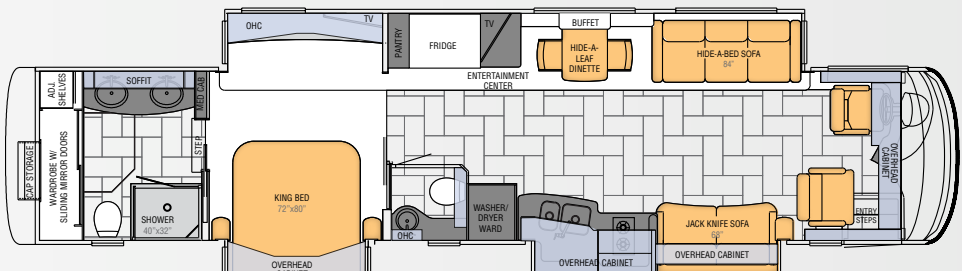
4540



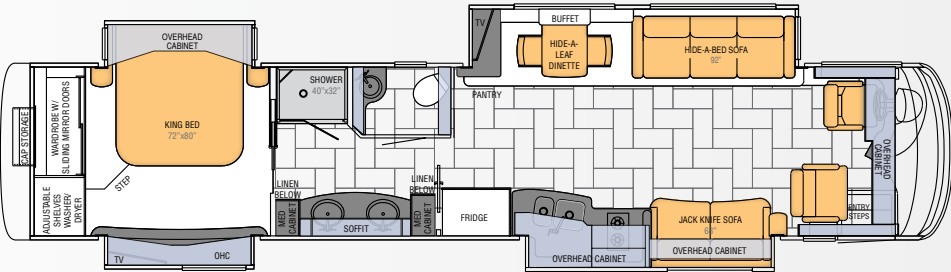
4541



4542



4544



4545

FLOOR PLAN SPECIFICATIONS

Floor Plan	App. Overall Length	Width	App. Overall Height	Interior Width	Interior Height	Grey	Sewage	Water	Propane	Furnace
4540	44' 11"	101.5"	12' 10"	95.5"	84"	65 gal.	45 gal.	105 gal.	32 gal.	50,000 btu
4541	44' 11"	101.5"	12' 10"	95.5"	84"	65 gal.	45 gal.	105 gal.	32 gal.	50,000 btu
4542	44' 11"	101.5"	12' 10"	95.5"	84"	65 gal.	45 gal.	105 gal.	32 gal.	50,000 btu
4544	44' 11"	101.5"	12' 10"	95.5"	84"	65 gal.	45 gal.	105 gal.	32 gal.	50,000 btu
4545	44' 11"	101.5"	12' 10"	95.5"	84"	65 gal.	45 gal.	105 gal.	32 gal.	50,000 btu



## EXTERIOR DESIGN & INTERIOR DECOR



Fenwick



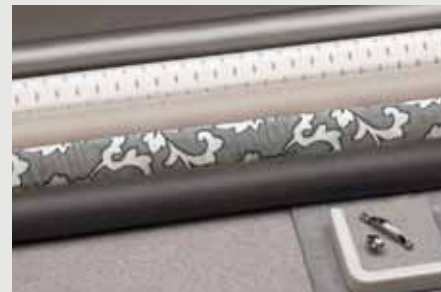
Amelia



Catalina



Sanibel



Milano Cherry - Standard



Rattan Glazed Maple



Ginger Glazed Cherry



Ginger Glazed Cherry w/ High Gloss

# UNRIVALED ESSEX CONSTRUCTION



## ROOF R-VALUE = 16

- a. Fiberglass Roof
- c. Fiberglass Batten Insulation
- d. A/C Ducting
- e. Aluminum Rafter Framing
- f. Kraft Paper Vapor Barrier
- g. 5/8" Bead Foam
- h. 3/16" Panel
- i. Padded Vinyl Overlay

## FLOOR R-VALUE = 16

- q. Carpet/Tile
- r. Carpet Padding
- s. 5/8" Floor Decking
- t. Fiberglass Batten Insulation
- u. 2"x 3" Wood Framing
- v. Polyethylene Moisture Barrier

## SIDEWALL R-VALUE = 11

- j. 3/16" Plywood Interior Wall
- k. 5/8" Bead Foam
- l. Kraft Paper Vapor Barrier
- m. Fiberglass Batten Insulation
- n. 3/16" Plywood Exterior Wall
- o. Composite One-Piece Gelcoat Exterior Sidewall
- p. Aluminum Framing with 3 1/2" Header Above

## BASEMENT R-VALUE = 4

- y. Cargo Liner
- z. 3/8" Floor Decking
- aa. 3/16" Luan Panel
- bb. 1 1/2" Bead Foam
- cc. Aluminum Sheetting with Steel Support Rails to Prevent Bowing and Flexing

- 1. 15M Penguin™ Heat Pump Central Air Conditioners (3)
- 2. One-Piece Bonded Windshield
- 3. Coated Aluminum Wheels
- 4. Frameless, Double-Pane, Tinted Safety-Glass Windows
- 5. Side-Hinged Baggage Doors

## CHASSIS SPECIFICATIONS

Floor Plan	Engine HP	Axle Ratio	Fuel Cap.	Wheel-base	Front GAWR*	Rear GAWR*	Tag GAWR*	GVWR*	GCWR*	App. UVW	App. NCC
4540	500	4.33	150 gal.	294+TAG	20,000 lb.	20,000 lb.	12,000 lb.	52,000 lb.	67,000 lb.	41,400 lb.	10,600 lb.
4541	500	4.33	150 gal.	294+TAG	20,000 lb.	20,000 lb.	12,000 lb.	52,000 lb.	67,000 lb.	41,850 lb.	10,150 lb.
4542	500	4.33	150 gal.	294+TAG	20,000 lb.	20,000 lb.	12,000 lb.	52,000 lb.	67,000 lb.	41,500 lb.	10,500 lb.
4544	500	4.33	150 gal.	294+TAG	20,000 lb.	20,000 lb.	12,000 lb.	52,000 lb.	67,000 lb.	43,550 lb.	8,450 lb.
4545	500	4.33	150 gal.	294+TAG	20,000 lb.	20,000 lb.	12,000 lb.	52,000 lb.	67,000 lb.	41,300 lb.	10,700 lb.

Lengths, heights, widths and dry weights are approximate. Weight will vary based on optional equipment added to the above base weight.

**GAWR:** Gross Axle Weight Rating is the maximum permissible weight for an axle.

**GVWR:** Gross Vehicle Weight Rating is the maximum permissible weight for a fully loaded motor coach.

**GCWR:** Gross Combination Weight Rating is the value specified by the manufacturer of the vehicle as the maximum allowable loaded weight of this motor coach and any towed trailer or towed vehicle.

**UVW:** Unloaded Vehicle Weight is the weight of this motorcoach as built at the factory with full fuel, engine oil and coolants. The UVW does not include cargo, fresh water, propane gas or dealer-installed accessories.

**NCC:** Net Carrying Capacity is the maximum weight of all occupants, including the driver, personal belongings, food, fresh water, waste water, propane gas, tools, tongue weight of towed vehicle, dealer-installed accessories, etc., that can be carried by the motorcoach.

\*Specifications supplied by the chassis manufacturer.

## UNRIVALED ESSEX CONSTRUCTION

The Spartan® K2's strong chassis with 20,000 lb. IFS (Independent Front Suspension), is the highest performing motor coach ever. Its tubular truss web frames and substructure beams form a foundation stable enough to allow extensive pass-through storage. This – and Essex's GVWR of 52,000 pounds, with a 12,000 pound tag axle, allows Essex to expand beyond its chassis footprint, creating extra living space. Its Cummins® ISX 500 Hp engine gives you incredible maneuverability and power, even on steep inclines. And if you should ever need it, Newmar's roadside assistance program is in place for the entire warranty period.



**CHASSIS FEATURES**

- Spartan® K2 Chassis with IFS
- Cummins® ISX 500 hp
- Allison® 4000 MH Transmission
- Tag Axle
- Automatic Traction Control
- Comfort Drive™ Steering with Power Column and Adjustable Control
- Accuride® ACCU-SHIELD™ Non-Polish Aluminum Wheels
- HWH® Four-Point Hydraulic Jacks with single Touch Control and Chassis Air Leveling
- Power Tilt-and-Telescope VIP Smart Wheel®
- Memory Settings for Drivers Seat, Pedals, Steering Wheel and Exterior Mirrors
- Cruise Control
- Recessed Fuel Fills with Crossover to Fill from Either Side
- Back-Up Alarm
- Anti-Lock Braking System
- Front Disc Brakes
- Electronic Chassis Information Display in Dash
- Tire Pressure Monitor System
- Chassis Service Center
- Leece-Neville 270-Amp Alternator
- 55-Degree Cramp Angle

**AIR CONDITIONING & HEATING**

- Three 15M Penguin™ Heat Pump Central Air Conditioners with Remote Control Thermostat
- Hydronic Zone Heating System
- Roof Air Conditioning Drainage System

**APPLIANCES & ACCESSORIES**

- 30" Convection Microwave Oven
- Two-Burner Recessed Cooktop
- Norcold® 17 Cu.Ft. Four-Door Refrigerator with Auto Defrost, Ice maker and Water Dispenser
- One-Piece Washer/Dryer Prep
- Sony® 40" LCD TV in Living Area
- Sony® 40" LCD TV in Bedroom

- TripTek™ Electronic Travel Information (Displayed on Rearview Monitor)
- Sideview Cameras with Image Displayed on Rearview Monitor Screen
- Surround Sound System with CD/DVD/Blu-Ray Player
- Bose® Wave Radio with CD Player and Alarm Clock in Bedroom
- Xite® AM/FM/SIRIUS® Satellite Radio-ready with CD and Touch Screen Monitor (Does not include SIRIUS® Monthly Subscription)
- "Nav-N-Go"® Navigation System Displayed through Dash Touch Screen Monitor
- 8.5" x 11" Safe
- Pre-programmed Universal Remote Control
- High Definition component Wiring and HD-ready Video Switching System
- Sony® Blu-Ray CD/DVD Player in Bedroom

**CABINETS & FURNITURE**

- Milano Cherry Fully Overlaid Square-Raised Cabinet Doors
- Hidden Leaf-Dinette Table with Corian® Top and Four Chairs (Two Fixed, Two Folding) \*
- Polished Corian® Countertop in Kitchen with Under-mounted Solid Surface Sink and Flush Sink Covers
- Polished Corian® Countertop in Bathroom with Integrated Bowl
- Polished Corian® Countertop on Bedroom Nightstands
- Residential Style Full Extension Ball Bearing Drawer Guides
- Drawers with Dove Tailed Sides
- Villa® Furniture
- Ultra Leather/Vinyl Heated Driver Seat with Eight-Way Power; Power Lumbar and Power Recline
- Ultra Leather/Vinyl Heated Passenger Seat with Eight-Way Power; Power Lumbar; Power Recline and Power Footrest
- Cedar Paneling in Rear Wardrobe
- King Bed with Hardwood Raised-Panel Bed Base

**ELECTRICAL FEATURES**

- 12.5 kW Cummins Onan® Diesel Quiet Generator on Hydraulic Slide and Auto Changeover
- 50-Amp Electrical Service with Flexible Cord on Power Cord Rewind Reel
- Four 6-Volt House Batteries on Pullout Tray
- 5-Watt Solar Panel
- 2,800-Watt Pure Sine-Wave Inverter with Automatic Generator Start
- Mid-ship Side Turn Signals
- Recessed Docking Lights
- Recessed Halogen Lights in Ceiling and Overhead Cabinets
- Switched Receptacle for Engine Block Heater
- Lighted Wardrobes with Automatic Switches
- ICC Light Flasher Switch
- Mood Lights in Lambrequins, Kitchen Valance, Bed Base and Fascia
- Daylight Headlight System
- Silverleaf® Multiplex Control System

**EXTERIOR FEATURES**

- Full-Paint Masterpiece™ Finish with Super Clear Coat & Front Protective Film
- One-Piece Bonded Windshield
- Convex Exterior Chrome Mirrors with Remote Control, Defrost and Turn Signals
- Dual latch Front Door with Power Flush Stepwell Cover
- Power Locking Baggage Doors
- 15,000 lb. Towing Hitch with Two Extra 14 Gauge Wires
- Holding Tank Levels Displayed in Exterior Water Works Compartment
- Mud Flaps

**INTERIOR FEATURES**

- Designer Feature Ceiling
- Power Duo Day/Night Privacy Window Shades (Windshield and Driver/Passenger Side Windows)

- Lined Day/Night Pleated Window Shades & Lambrequins
- Polished Corian® Window Sills
- Polished Porcelain Floor Tile in Kitchen, Bathroom, Entrance Areas
- Raised-Panel Interior Passage Doors
- Power-Activated Sun Visors

**PLUMBING & BATH FEATURES**

- Demand Water System with Aquajet™ "ES" Pump
- Thetford™ Aria Sculptured China Stool (Thetford™ Vacuum Flush Stool in Rear Baths)
- Two Monitor Panels (One Interior & One in Exterior Water Compartment)
- MANABLOC® Plumbing System
- Monopex Water-Pump Switches Located in Bathroom, Kitchen and Near Gate Valves
- Auto Water-Fill System
- Whole House Water Filter
- Corian® Shower Walls with Decorative Inserts
- Power Rewind Water-Hose Reel

**CONSTRUCTION FEATURES**

- Power Lock Arms on All Slideout Rooms

**WINDOWS, AWNINGS, & VENTS**

- Frameless, Double-Pane Tinted Safety-Glass Windows
- Fan-Tastic® Vent with Rain Sensor in Kitchen Area and Bathroom
- Driver's-Side Power Window
- Girard® Power Bedroom and Slideout Window Awnings
- Two Girard® Integrated Power Box Side Awnings with Remote Controls
- Girard® Power Front Entrance Door Awning
- Keyless Entry with Doorbell and Touch Pad

**OPTIONS****AIR CONDITIONING & HEATING**

- Electric Heat under Floor Tile

**APPLIANCES & ACCESSORIES**

- GE® 30" Profile Advantium™ Microwave Oven
- Whirlpool® 17 Cu.Ft. Four-Door Refrigerator with Ice maker and Water Dispenser
- Dometic® Freezer on Pullout Tray
- Maytag® Stackable Washer/240-Volt Dryer in Full Length Cabinet \*
- Fisher & Paykel DishDrawer®\*
- All-Electric Unit with Whirlpool® Refrigerator and Four Extra Batteries \*
- Sony 40" LCD TV in Front Overhead Cabinet\*
- Remote-Controlled Rearview Color Camera
- Sideview Cameras with Image Displayed on Rearview Monitor Screen
- Exterior Entertainment Center Located in Sidewall with Sony® 40" LCD TV
- External Entertainment Center Located in Storage Compartment with Sony 32" LCD TV, AM/FM Radio and CD Player on Adjustable Swing Arm
- KVH R-6 In-Motion Satellite without Receiver
- Central Vacuum with Deluxe Tool Kit
- Security System
- CB Radio with Antenna

**CABINETS & FURNITURE**

- Ginger Glazed Cherry Hardwood Cabinets
- Rattan Maple Glazed Hardwood Cabinets
- Ginger Glazed Cherry Hardwood Cabinets with High-Gloss Finish
- Ultra Leather Hide-A-Bed Sofa with Air Mattress/ Dinette Ensemble with Two Folding Chairs\*
- Two Leather/Vinyl Recliners\*
- Sleep Number® Air Mattress for Main Bed

**ELECTRICAL FEATURES**

- Roof-Mounted Spot Light
- AGM Batteries

**EXTERIOR FEATURES**

- Large Storage Tray with Access from One Side or Either Side
- Power Sliding Storage Tray

**INTERIOR FEATURES**

- Polished Porcelain Floor Tile Extended into Bedroom
- Power Duo Day/Night Window Shade System throughout Living Area
- Power Silhouette Window Shades

**PLUMBING & BATH FEATURES**

- Assist Handle in Tub/ Shower



Mahlon Miller, Newmar founder, and his wife, Irene  
Matthew Miller, Newmar president, and his wife, Pam

The quiet, energetic farm town of Nappanee, Indiana is home to Newmar's owners, the Miller family. They are actively engaged in its operations, embracing employees, suppliers, dealers and customers as part of the Newmar family. The family has grown since 1968 but continues to strive for faithfulness to the tenets of its founders, including a strong community, bearing burdens for others, forgiveness, fairness, honesty, integrity, and peace with one's neighbors.



WHEN YOU KNOW THE DIFFERENCE™

**NEWMAR CORPORATION**  
355 N DELAWARE ST  
PO BOX 30  
NAPPANEE IN 46550-0030  
574-773-7791 Fax 574-773-2895

[www.newmarcorp.com](http://www.newmarcorp.com)

**THE NEWMAR KOUNTRY KLUB** is an exclusive club for owners of fine Newmar products that offers many advantages and benefits to its members. Learn more at: [www.newmarkountryklub.com](http://www.newmarkountryklub.com).

**ESTABLISHED OVER 40 YEARS AGO**, Newmar is an innovator and leader in the RV manufacturing industry. Its quality craftsmanship is recognized nationally. The Newmar dealer network spans across the United States and Canada.

Call 1-800-860-0086 to be our guest for a factory tour.

(Please affix dealer stamp in this area.)

## NEWMAR EXPRESS LIMITED WARRANTY

Every Essex Diesel Pusher is backed by Newmar's one-year limited warranty/unlimited miles. Ask your Newmar dealer for details.

## LIMITED FIVE-YEAR STRUCTURAL WARRANTY

If any part of your Newmar recreational vehicle superstructure (which is the steel/aluminum structure of the sidewall, roof or frame) fails to perform properly within five years from the date of purchase because of faulty workmanship or material supplied by Newmar, it will be repaired without charge for either parts or labor by Newmar. This structural warranty is available only to the original purchaser and is non-transferable.

Some features in our literature are optional. Colors and finishes are photographic representations. The actual materials may look different. Prices, specifications and floor-plans are subject to change at Newmar's discretion, without prior notice or obligation. Please see your dealer for actual samples and specifications. ©2011 Newmar Corporation.