



WHEN YOU KNOW THE DIFFERENCESM

2013
Bay Star Sport
Bay Star
Gas Motor Coach

2013 BAY STAR SPORT

Gas Motor Coach

Comfortable livability. And the ease of knowing you got the most bang for your buck. This is the Newmar built for those who are new to the road – or those who are wise to its ways.



FEATURES AT A GLANCE

- New designer mitered glazed door cabinetry
- Lighted exterior storage compartments
- Flexsteel® Delux Leather driver/passenger seats and furniture*
- 26" LED/LCD TV in bedroom
- Optional additional exterior designer paint treatment

The Newmar built to get you going.

The new 2013 Bay Star Sport offers legendary Newmar quality at a price that will make you smile. Its four floorplans create family comfort on the road – and all the smart extras you want. Ahh.



Bay Star Sport
Sherwood Designer Style Exterior

Cummins Onan



*Check floorplan availability

Bay Star Sport

You'll be pinching yourself when you find out what you get in the Bay Star Sport, especially in this price range. Its main living area is perfect for quality time with the family or for entertaining. There's a new sense of richness and depth in Bay Star Sport's cabinetry. You'll marvel at its stunningly unique glazing and door details.



Gather here. The fun begins now.

Your Bay Star Sport kitchen brings together the comforts of home in one smart package. With its mini-peninsula, you get enough counter space for friends and family to gather comfortably. The cook will love its food prep amenities, too, including standard black appliances.



FEATURES AT A GLANCE

- Flexsteel® Delux leather furniture
- Large LCD TV
- Mini-peninsula kitchen
- Designer mitered glazed door cabinetry



Bay Star Sport
Nottingham Decor Scheme with Empire Maple Glazed
Cabinetry in Floorplan # 2901



Creature Comforts

This is your center of relaxation. With a bed surrounded by beautifully glazed cabinetry, you'll rejuvenate with neutral, calming linens and an optional 26" LCD TV. Whether you're road weary or just ready to kick back, you'll appreciate Bay Star Sport's day/night pleated shades and comfy, padded, suede-like headboard. And with a bathroom this luxurious, you'd expect to spend much more. But these comforts come standard with Bay Star Sport, including its privacy glass shower door and luxurious lavatory cabinetry. Plus, of course, the exquisite fit and finish of a Newmar. Rest stops just got a whole lot better!

One rest stop you'll love.

Move beyond Bay Star Sport's main cabin and find yourself in eminently livable comfort that's meant to soothe and restore. From its soft, roomy bed to its home like shower, there's no place like Bay Star Sport.

FEATURES AT A GLANCE

- New glazed mitered cabinetry and bed surround
- Residential bedroom carpeting
- Power vent in bathroom
- Skylight in shower
- Built in dresser with mirrors in bedroom



EXTERIORS



NOTTINGHAM (STANDARD)



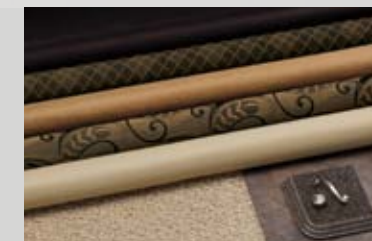
NOTTINGHAM (OPTIONAL)



SHERWOOD (STANDARD)



SHERWOOD (OPTIONAL)



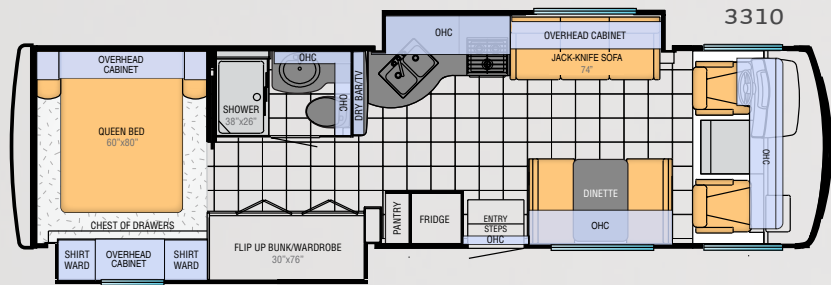
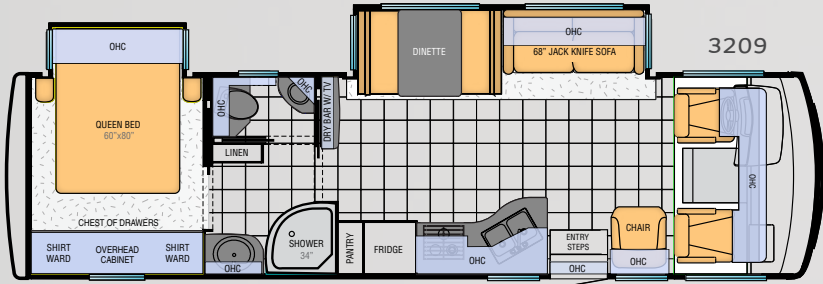
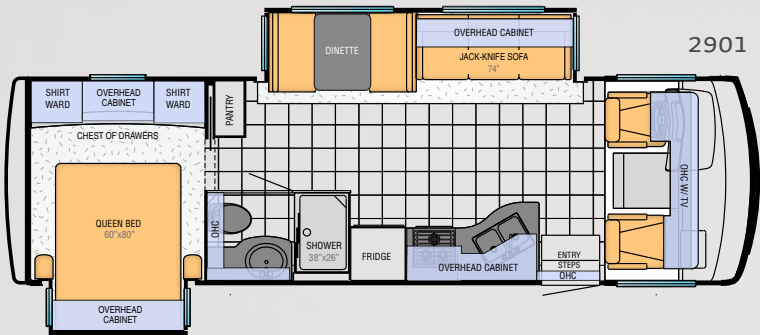
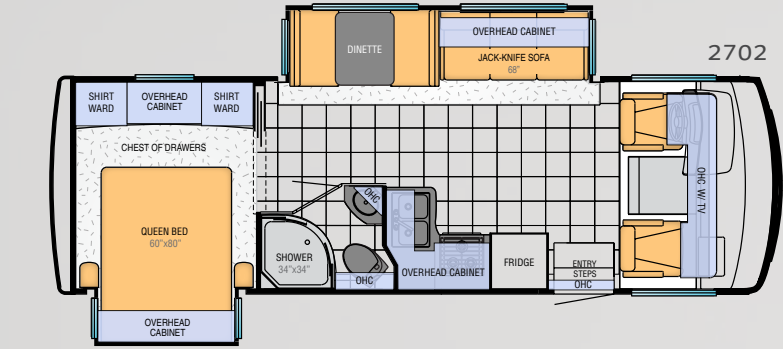
WOOD OPTIONS



EMPIRE MAPLE WITH
DESIGNER MITERED,
GLAZED DOORS



SIENNA MAPLE WITH
DESIGNER MITERED,
GLAZED DOORS



BAY STAR SPORT FLOORPLAN SPECIFICATIONS

Floorplan	App. Overall Length	Width	App. Overall Height	Interior Width	Interior Height	Grey	Sewage	Water	Propane	Furnace
2702	27' 10"	101.5"	12' 4"	95.5"	80"	60 gal.	40 gal.	75 gal.	25 gal.	30,000 btu
2901	29' 10"	101.5"	12' 4"	95.5"	80"	60 gal.	40 gal.	75 gal.	25 gal.	30,000 btu
3209	32' 11"	101.5"	12' 4"	95.5"	80"	60 gal.	40 gal.	75 gal.	25 gal.	30,000 btu
3310	33' 11"	101.5"	12' 4"	95.5"	80"	60 gal.	40 gal.	75 gal.	25 gal.	30,000 btu

CHASSIS FEATURES

- Ford® F-53 18,000Lb. Chassis (27' - 29' floorplans)
- Ford® F-53 20,500Lb. Chassis (32' - 33' floorplans)
- Cruise Control
- Tilt Steering Wheel
- Stainless Steel Wheel Simulators

APPLIANCES & ACCESSORIES

- Dometic® 6-CuFt. Refrigerator
- 1-Cf Microwave on Most Floorplans; 30" Spacesaver on 3310
- 3-Burner Range with Glass Oven Door
- 6-Gallon Gas Water Heater with Direct Spark Ignition
- AM/FM Dash Radio with CD Player with Auxiliary Jack
- Cable TV Connection
- LCD TV in Living Area; TV Sizes Vary Per Floorplan
- Range Hood with Light and Fan
- Rear View Color Monitor System with Audio
- Roof Mounted Digital TV Antenna with Power Booster
- Wood Paneling Refrigerator Front

AIR CONDITIONING & HEATING

- 13.5M Brisk® Central Air Conditioner
- Dash Heater and Air Conditioner
- Propane Gas Furnace with Ducted Heat - Propane Leak Detector

CABINETS & FURNITURE

- Flexsteel® Delux Leather, Non Power Driver/ Passenger Seats that Rotate and Recline*
- Empire Maple Glazed Mitered Cabinet Doors on Overheads and Flat Panel Doors on Base Cabinets
- Drawers with Full Extension Guides
- Flexsteel® Delux Leather Sofa*
- Laminate Counter top In Bath with Acrylic Sink
- Laminate Counter top in Kitchen with Stainless Steel Sink
- Laminate Counter top on Bedroom Night Stands and Chests
- Lifts on Bed Top
- Smooth Top Mattress

ELECTRICAL FEATURES

- Two 12-Volt House Batteries
- 110-Volt Exterior Receptacle in Door Side Storage Compartment
- 12-Volt Auxiliary Receptacle on Dashboard
- 30-Amp Electrical Service with Flexible Cord
- 4.0-kW Onan® Generator with One Remote Switch and Automatic Changeover
- 45-Amp Converter
- Daytime Running Lights
- Emergency Engine Start Switch
- Incandescent Ceiling Lights
- Manual Battery Disconnect Switch for House Battery
- Manually Operated Hold to Run Slideout Switch
- TV Jack on the Exterior Door Side of Unit

PLUMBING & BATH FEATURES

- ABS Shower Surround with Shower Door
- Demand Water System
- Monitor Panel
- Sewage Holding Tank Rinse
- Dometic® Stool with China Bowl
- Water Heater Bypass System

WINDOWS, AWNINGS & VENTS

- Dometic® 8500 Side Awning
- One-Piece Tinted Windshield
- Power Vent in Bathroom
- Shower Skylight
- Single-Pane Tinted Safety Glass Windows

INTERIOR FEATURES

- Carpeting in Bedroom
- 10-Bc Fire Extinguisher, Carbon Monoxide and Smoke Detectors
- Dash Panel Color Coordinated Abs
- Inlaid 6-Panel Design Interior Passage Doors
- Interior Assist Handle at Main Entry Door
- Pleated Window Shades
- Quilted Bedspread with Accent Pillow
- Vinyl Covered Ceiling Panels
- Vinyl Floor in Kitchen, Foyer and Bathroom
- Wraparound Windshield Area Privacy Shade

EXTERIOR FEATURES

- Assist Handle at Entrance Door
- Automatic Step for Entrance Door
- Convex Exterior Mirrors
- Exterior Storage Compartments with Painted Finish
- Gel Coated Exterior Sidewalls with Fiberglass Front and Rear Caps
- Lighted Exterior Storage Compartments
- Mud Flaps
- Rear Hitch for Towing Car
- Undercoating

GRAPHICS & DECOR

- Nottingham - Exterior Vinyl Tape Graphics
- Sherwood - Exterior Vinyl Tape Graphics

CONSTRUCTION FEATURES

- 5/8" Foam Insulation Laminated in Sidewalls and Ceiling
- Aluminum Frame Sidewalls and Roof Construction, 16" on Center
- BriteTEK™ Roof with "Walkable" Decking and Radius Aluminum Roof Wrap

OPTIONS

AIR CONDITIONING AND HEATING

- 15M Penguin™ Heat Pump Air Conditioner in place of Standard Air Conditioning and Heating
- Driver/Passenger Overhead Dash Fans
- Extra 13.5M Brisk® Air Conditioner
- 5.5 Onan® Generator, 50-Amp*

APPLIANCES & ACCESSORIES

- 26" LED/LCD TV in Bedroom
- DVD Player with Coax Switcher
- Satellite Dish Prep for Roof Top

CABINETS & FURNITURE

- Flex-O-Bed Sofa with Air Mattress on Off Door Side
- Sienna Glazed Maple Cabinets

ELECTRICAL FEATURES

- 600-Watt Inverter for Both Living Area and Bedroom TV

EXTERIOR FEATURES

- Convex Exterior Mirrors with Defrost and Remote Control
- Hydraulic Leveling Jacks
- Rear Ladder
- Diamond Shield on Front Cap

GRAPHICS & DECOR

- Nottingham - Exterior Vinyl Tape Graphics with Painted Skirt and Mask
- Nottingham - Interior Decor
- Sherwood - Exterior Vinyl Tape Graphics With Painted Skirt and Mask
- Sherwood - Interior Decor

WINDOWS, AWNINGS & VENTS

- 12-Volt Power Vent in Kitchen Area
- Two Slideout Covers
- Bunk Windows
- Dometic® 9100 Power Side Awning
- Double Pane Tinted Safety Glass Windows
- Rear Window

*Check with dealership on floorplan availability and complete listing of features.

CONSTRUCTION & SPECIFICATIONS

Bay Star coaches feature 20.5 k Ford® F-53 20,500 lb. chassis and include Total Comfort™ Dual In-Roof Ducting Systems and aluminum frame construction.



CEILING R-VALUE = 16

- a. BriteTEK™ Roof
- b. 9mm Wood Decking
- c. Fiberglass Batten Insulation
- d. Total Comfort™ Ducted A/C
- e. Aluminum Roof Truss
- f. Kraft Paper Vapor Barrier
- g. 5/8” Bead Foam
- h. 3/16” Plywood Ceiling Panel
- i. Padded Vinyl Overlay

WALLS R-VALUE = 11

- j. 16” On-Center Aluminum Framing with 3 1/2” Header
- k. 3/16” Plywood Interior Wall
- l. 5/8” Bead Foam
- m. Kraft Paper Vapor Barrier
- n. Fiberglass Batten Insulation
- o. 3/16” Plywood Exterior Wall
- p. Composite One-Piece Gelcoat Exterior Sidewall

FLOOR R-VALUE = 11

- q. Carpet /Tile
- r. Carpet Padding
- s. 5/8” Floor Decking
- t. Fiberglass Batten Insulation
- u. 2”x 3” Wood Framing
- v. Polyethylene Moisture Barrier
- w. Aluminum Ducting

BAY STAR SPORT CHASSIS SPECIFICATIONS

Floor Plan	Engine HP	Axle Ratio	Fuel Cap.	Wheelbase	Front GAWR*	Rear GAWR*	Tag GAWR*	GVWR*	GCWR*	App. UVW	App. NCC
2702	362	4.88	80 gal.	172”	7,000 lb.	12,000 lb.	0	18,000 lb.	26,000 lb.	15,182 lb.	2,818 lb.
2901	362	4.88	80 gal.	190”	7,000 lb.	12,000 lb.	0	18,000 lb.	26,000 lb.	15,245 lb.	2,755 lb.
3209	362	5.38	80 gal.	208”	7,500 lb.	13,500 lb.	0	20,500 lb.	26,000 lb.	17,188 lb.	3,312 lb.
3310	362	5.38	80 gal.	208”	7,500 lb.	13,500 lb.	0	20,500 lb.	26,000 lb.	16,408 lb.	4,092 lb.

BAY STAR CHASSIS SPECIFICATIONS

Floor Plan	Engine HP	Axle Ratio	Fuel Cap.	Wheelbase	Front GAWR*	Rear GAWR*	Tag GAWR*	GVWR*	GCWR*	App. UVW	App. NCC
2901	362	5.38	80 gal.	190”	7,500 lb.	13,500 lb.	0	20,500 lb.	26,000 lb.	16,083 lb.	4,417 lb.
3002	362	5.38	80 gal.	190”	7,500 lb.	13,500 lb.	0	20,500 lb.	26,000 lb.	16,592 lb.	3,908 lb.
3012	362	5.38	80 gal.	190”	7,500 lb.	13,500 lb.	0	20,500 lb.	26,000 lb.	14,997 lb.	5,503 lb.
3209	362	5.38	80 gal.	200”	7,500 lb.	13,500 lb.	0	20,500 lb.	26,000 lb.	16,815 lb.	3,685 lb.
3302	362	5.38	80 gal.	208”	7,500 lb.	13,500 lb.	0	20,500 lb.	26,000 lb.	17,300 lb.	3,200 lb.
3305	362	5.38	80 gal.	222”	7,500 lb.	13,500 lb.	0	20,500 lb.	26,000 lb.	17,656 lb.	2,844 lb.

Lengths, heights, widths and dry weights are approximate. Weight will vary based on optional equipment added to the above base weight.

GAWR: Gross Axle Weight Rating is the maximum permissible weight for an axle.

GVWR: Gross Vehicle Weight Rating is the maximum permissible weight for a fully loaded motor coach.

GCWR: Gross Combination Weight Rating is the value specified by the manufacturer of the vehicle as the maximum allowable loaded weight of this motor coach and any towed trailer or towed vehicle.

UVW: Unloaded Vehicle Weight is the weight of this motorcoach as built at the factory with full fuel, engine oil and coolants. The UVW does not include cargo, fresh water, propane gas or dealer-installed accessories.

NCC: Net Carrying Capacity is the maximum weight of all occupants, including the driver, personal belongings, food, fresh water, waste water, propane gas, tools, tongue weight of towed vehicle, dealer-installed accessories, etc., that can be carried by the motorcoach.

*Specifications supplied by the chassis manufacturer.

NEWMAR PARTNERS

Cummins Onan



CUMMINS ONAN · *Performance You Rely On™*

An innovator in standby and mobile power generation for more than 80 years, Cummins Onan generators are built by Cummins Power Generation, a globally recognized name in the design and manufacture of power generation products and services.

www.cumminsonan.com



Driven By You

FREIGHTLINER CUSTOM CHASSIS · *Driven by You*

A subsidiary of Daimler Trucks North America, Freightliner Custom Chassis Corporation manufactures premium chassis that have become renowned for their exceptional ride and handling characteristics, tight turning radius and extraordinary dependability.

www.freightlinerchassis.com



SONY · *make.believe™*

One of the most comprehensive entertainment and technology companies in the world, Sony Corporation is a leading manufacturer of audio, video, communications and information technology products for consumers and professionals alike.

www.sony.com



SPARTAN CHASSIS · *The Premier Foundation*

Spartan Chassis is a world class leader in the design, engineering and flexible production of chassis and components that consistently deliver superior performance, exceptional safety ratings and technological innovations.

www.spartanchassis.com

Newmar.

Where the finest names in quality and performance are along for the ride.

To assure that you experience only the best in comfort, control and unsurpassed convenience in our incomparable family of luxury coaches, Newmar partners with the most prestigious names in mobile lifestyle, entertainment and technology. These brands are leaders in their fields —and legends in providing customers with new, unsurpassed levels of quality and reliability.

Best in class performance from names you can trust. At Newmar, that’s our difference. And our promise.



Mahlon Miller,
Newmar founder,
and Matthew Miller,
Newmar president,
lifelong motor coach
enthusiasts



Trust.

The strongest possible foundation for a motor coach.

According to Newmar president Matthew Miller, "Customers say they're loyal to us because they trust us to stand behind our products, from support, parts and service to paying our warranties. It feels good to own a coach that has all of that behind it."

How do we sustain this high level of service? At Newmar, there's a Miller way of doing things. These principles guide us every day. Courtesy. Integrity. And reliability. So when you buy from Newmar, you know that every single person who touches your coach or talks with you has your back. Period.

Gather. Where the Newmar owners are.

The Newmar Kountry Klub is an exclusive club for owners of fine Newmar products that offers many advantages and benefits to its members. Learn more at: www.newmarkountryklub.com.

NEWMAR EXPRESS LIMITED WARRANTY

Every Bay Star & Bay Star Sport Gas Motorcoach is backed by Newmar's one-year limited warranty/unlimited miles. Ask your Newmar dealer for details.

LIMITED FIVE-YEAR STRUCTURAL WARRANTY

If any part of your Newmar recreational vehicle superstructure (which is the steel/aluminum structure of the sidewall, roof or frame) fails to perform properly within five years from the date of purchase because of faulty workmanship or material supplied by Newmar, it will be repaired without charge for either parts or labor by Newmar. This structural warranty is available only to the original purchaser and is non-transferable.

Some features in our literature are optional. Colors and finishes are photographic representations. The actual materials may look different. Prices, specifications and floorplans are subject to change at Newmar's discretion, without prior notice or obligation. Please see your dealer for actual samples and specifications.



WHEN YOU KNOW THE DIFFERENCE™

NEWMAR CORPORATION

355 N DELAWARE ST
PO BOX 30
NAPPANEE IN 46550-0030
574-773-7791 Fax 574-773-2895

www.newmarcorp.com