

2013 VENTANA LE & VENTANA - Diesel Motor Coach



WHEN YOU KNOW THE DIFFERENCESM

2013
Ventana LE
Ventana
Diesel Motor Coach

NEWMAR CORP.

2013 VENTANA LE

Diesel Motor Coach

Genuine Newmar styling and performance.

Room to spare and thoughtful extras.

The solid strength of a Freightliner® Custom Chassis. And the price? That may be the most pleasant surprise of all with the 2013 Ventana LE.



Ventana LE Exterior
Garnet Designer Style

FEATURES AT A GLANCE

- Full-Paint Masterpiece™ Finish with front protective film
- 6.0-kW Cummins Onan® Diesel Quiet Series Generator
- Freightliner® Custom Chassis with 340HP Cummins ISB Engine
- Manual tilt and telescope steering column with VIP Smart Wheel
- One-piece bonded windshield
- Cruise control and anti-lock braking system



Cummins **Onan**



Affordable elegance inside and out.

Ventana LE is built for beauty and solid performance. Newmar's Full-Paint Masterpiece™ Finish is the crowning jewel of a look that carries the upswept graphics and design detail of a high end luxury diesel. Behind this gorgeous coach's wheel, you're in command of a powerful 340HP Cummins® ISB engine, with VIP Smart Wheel for easy control and standard side view cameras.



Ventana LE
Quartz Décor Scheme with Empire Maple Glazed
Cabinetry in Floorplan # 3434

Step in. And step up to something special.

The 2013 Ventana LE brings you handsome new décor, all glazed cabinetry, a roomy homestyle kitchen – and we're just getting started. Rest easy in a Flexsteel® sofa next to a matching recliner that puts you and your guests directly across from an optional 32" front overhead HDTV with a Sony® Surround Sound System. This spacious cabin with its full wall slide, residential quality furnishings and attractive design refute Ventana LE's equally attractive price.



* Optional



A simply delicious kitchen.

Your L-shaped Ventana LE kitchen offers a polished solid surface countertop and backsplash, a stainless steel sink with residential quality fixtures, glazed and mitered designer doors – even a charming window to let the sunshine in. Who's hungry?



SONY®

FEATURES AT A GLANCE

- Glazed unitized cabinets
- Polished solid surface kitchen countertop w/stainless steel sink
- Flexsteel® Delux sofa
- Color monitor system with rear and side view cameras
- Sony® Surround Sound System with sub-woofer*





A bedroom to inspire dreams.

The Ventana LE's sleeping quarters let you curl up surrounded by Newmar craftsmanship. Its queen size bed's hardwood frame has a suede headboard insert as a luxurious accent, while its overhead raised panel doors with down-lighting add more than ample storage.

A full bedroom cabinet wardrobe is standard in Ventana LE. You can even add an optional washer/dryer for true versatility.

SONY.



Every night is movie night.

Ventana LE's queen size bed squarely faces a 32" LCD TV with DVD. And day/night shades deliver your choice of evening privacy or a dawn's eye view of what the morning has in store.

FEATURES AT A GLANCE

- LCD TV in living and bedroom areas
- Pullout bathroom step stool with storage*
- Smooth top queen mattress with quilted bedspread, and accent pillow
- Shower with glass door
- Vinyl tile floor in kitchen, bathroom and living area

* Optional

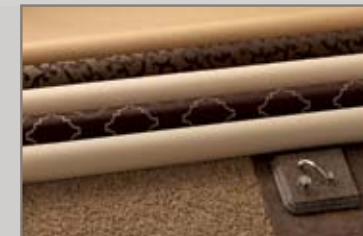


Space. Style. Storage.

Your Ventana LE bathroom offers the comforts of a shower, handcrafted cabinets with room to spare, even a pull out step drawer to help visiting little ones wash up at the stainless steel sink and countertop with solid surface edge vanity.

EXTERIOR DESIGN & DÉCOR OPTIONS

QUARTZ



GARNET



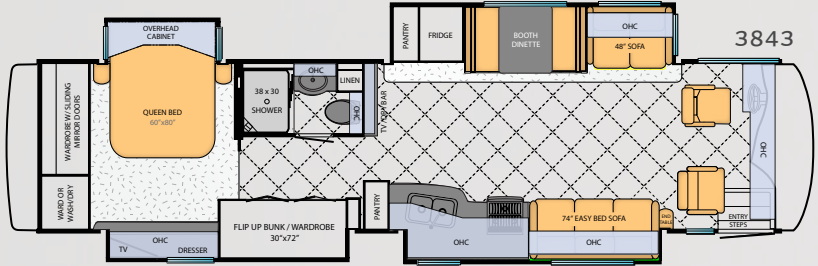
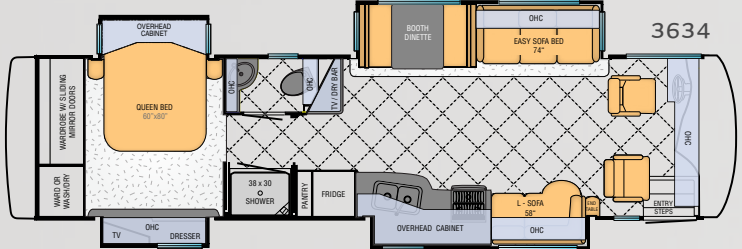
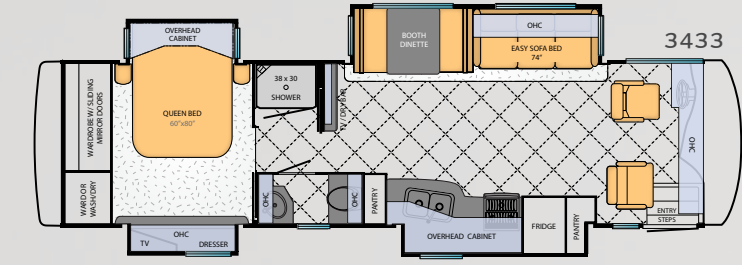
WOOD OPTIONS



EMPIRE MAPLE WITH
GLAZED DOORS



SIENNA MAPLE WITH
GLAZED DOORS



FLOORPLAN SPECIFICATIONS

Floorplan	App. Overall Length	Width	App. Overall Height	Interior Width	Interior Height	Grey	Sewage	Water	Propane	Furnace
3433	34' 10"	101.5"	12' 5"	95.5"	84"	65 gal.	45 gal.	105 gal.	32 gal.	54,000 btu
3434	34' 10"	101.5"	12' 5"	95.5"	84"	65 gal.	45 gal.	105 gal.	32 gal.	35,000 btu
3634	36' 08"	101.5"	12' 5"	95.5"	84"	65 gal.	45 gal.	105 gal.	32 gal.	54,000 btu
3843	38' 08"	101.5"	12' 5"	95.5"	84"	65 gal.	45 gal.	105 gal.	32 gal.	54,000 btu
3862	38' 08"	101.5"	12' 5"	95.5"	84"	65 gal.	45 gal.	105 gal.	32 gal.	54,000 btu

CHASSIS FEATURES

- Freightliner® Custom Chassis XCR with 340Hp Cummins® ISB Engine
- Chrome Wheel Simulators
- Hydraulic Leveling Jacks
- Cruise Control
- Manual Tilt and Telescope Steering Column with VIP Smart Wheel
- Recessed Fuel Fills with Crossover to Fill from Either Side
- Anti-Lock Braking System

APPLIANCES & ACCESSORIES

- Spacesaver Microwave Oven
- Three-Burner Cooktop with Piezzo Ignition
- Norcold® 10-Cu.Ft. Refrigerator
- 10-Gal. Gas/Electric Water Heater with Direct-Spark Ignition*
- One-Piece Compact Washer/Dryer Prep *
- LCD TV in Living and Bedroom Areas; TV Sizes Vary per Floorplan*
- AM/FM Dash Radio with MP3 Adapter and CD Player
- Rear View Color Monitor System with Audio

- Side View Cameras Displayed onto Rear View Monitor Screen
- DVD Player in Bedroom
- 10-Bc Fire Extinguisher, Smoke Detector and Carbon Monoxide Detector
- TV Antenna with Power Booster
- Satellite Prep

AIR CONDITIONING & HEATING

- Two 13.5M Penguin™ Heat Pump Central Air Conditioners
- Propane Furnace with Ducted Heat
- Dash Heater & High Output Air Conditioner
- Propane Leak Detector
- Wall Mounted Sensors for Heating and Air Conditioning
- Driver/Passenger Overhead Dash Fans

CABINETS & FURNITURE

- Empire Maple Mitered Designer Glazed Cabinet Doors
- Concealed Hinges on Cabinet Doors
- Drawers with Full Extension Guides
- Fixed Pantry Shelves
- Booth Dinette with Forward Facing Seat Belts*

- Polished Solid Surface Countertop in Kitchen with Stainless Steel Sink and Flush Sink Covers
- Laminate Countertop with Solid Surface Edge in Bathroom with Stainless Steel Sink
- Laminate Countertop on Nightstands, Dressers and Chest of Drawers
- Residential Style Full Extension Ball Bearing Drawer Guides
- Flexsteel® Delux Leather Furniture
- Smooth Top Mattress with Quilted Bedspread, Shams and Accent Pillows
- Pullout Step Stool with Storage in Bathroom
- Front Seats with 6-Way Power

ELECTRICAL FEATURES

- 6.0-kW Cummins Onan® Diesel Quiet Series Generator
- 50-Amp Electrical Service with Flexible Cord
- Four 6-Volt House Batteries on Pullout Tray
- Battery Disconnect Switch
- 110-Volt Exterior Receptacle
- 1200-Watt Inverter
- Emergency Start Switch

- Exterior Security Light on Door Side
- Midship Side Turn Signals
- Halogen Lights Recessed in Ceiling and Overhead Cabinets
- Manually Operated Hold-To-Run Slideout Switch
- ICC Light Flasher Switch
- 12-Volt Auxiliary Receptacle on Dashboard
- Exterior TV Jack
- Interior Courtesy Lights

PLUMBING & BATH FEATURES

- Demand Water System with SHURflo® Pump
- Sewage Holding Tank Rinse
- Water Heater Bypass System*
- Thetford™ Aqua Magic Plus China Stool*
- Monitor Panel
- Fiberglass Shower with Glass Door*
- Exterior Shower
- Water Filter for Entire Unit

WINDOWS, AWNINGS & VENTS

- One-Piece Tinted Windshield
- Single-Pane Tinted Safety Glass Windows

- Power Vent in Kitchen and Bathroom
- Shower Skylight
- Dometic® 9000 Plus Side Awning with Aluminum Shield
- Dometic® Oasis Manual Front Entrance Door Awning
- Dometic® Slideout Awning Covers

EXTERIOR FEATURES

- Full-Paint Masterpiece Finish™ with Front Protective Film
- One-Piece Bonded Windshield
- Convex Exterior Mirrors with Remote Control and Defrost
- Entrance Door with Automatic Step
- Power Flush Stepwell Cover
- Lighted Exterior Storage Compartments with Cargo Liner
- Assist Handle at Entrance Door
- Mud Flaps
- Rear Ladder
- Undercoating

INTERIOR FEATURES

- Padded Vinyl Ceiling
- Day/Night Pleated Window Shades & Lambrequins

- Mini Blinds in Kitchen and Bathroom
- Vinyl Tile Floor in Kitchen, Bathroom and Living Area
- Carpet in Living Room and Bedroom
- Day/Night Privacy Shades on Driver/ Passenger Side Windows
- Power Day/Night Shades for Windshield

CONSTRUCTION FEATURES

- BriteTEK™ Roof with Walkable Decking
- Gel Coated Fiberglass Exterior Sides
- Gel Coated Fiberglass Front and Rear Caps
- Aluminum Frame Sidewalls & Roof Construction, 16" on Center
- 5/8" Foam Insulation Laminated in Sidewalls and Ceiling

OPTIONS

CHASSIS FEATURES

- TripTek™ Electronic Travel Information (Displayed on Rearview Monitor)

AIR CONDITIONING & HEATING

- Two 15M Penguin Heat Pump Air Conditioner and Energy Management System*

APPLIANCES & ACCESSORIES

- Norcold® 12-Cu.Ft. 4-Door Refrigerator with Icemaker*
- Maytag Residential Refrigerator with Icemaker and Water Dispenser, includes 2000-Watt Pure Sine Inverter with 2 Extra Batteries*
- 30" Convection Microwave Oven
- Three-Burner Cooktop with Piezzo Ignition
- Icemaker added to Refrigerator *
- Whirlpool® 2-Piece Washer & Dryer Stacked in Full Height Wardrobe

- Compact 1-Piece Washer/Dryer *
- 32" LCD TV in Front Overhead*
- Automatic Satellite without Receiver
- Sony® Surround Sound System with Sub-woofer
- Side View Cameras
- Preprogrammed Universal Remote Control
- 11" Flip-Down LCD TV and DVD Player with Headphones at Each Bunk*

CABINETS & FURNITURE

- Sienna Maple Cabinets
- Hide-A-Bed Sofa with Air Mattress*
- Sleep Number Deluxe® Air Mattress
- Extenda L Sofa on Off Door Side

ELECTRICAL FEATURES

- 8.0-kW Onan® Diesel Quite Series Generator
- LED Lights

EXTERIOR FEATURES

- Large Chrome Exterior Mirrors
- Large Storage Tray with Access from One Side or Either Side *

INTERIOR FEATURES

- Halogen Lighting
- Vinyl Floor Extended into Bedroom
- Power Day/Night Shades in Place of Day/Night Pleated Windows

PLUMBING & BATH FEATURES

- 110-Volt Heat Pads for Holding Tanks
- Bathtub*

WINDOWS, AWNINGS & VENTS

- Dometic® 9000 Window Awning
- Dometic® Weather Pro Side Awning & Oasis Power Front Entrance Door Awning
- Kitchen Window

CONSTRUCTION FEATURES

- One-Piece Molded Fiberglass Roof

WINDOWS, AWNINGS & VENTS

- Dometic® Weather Pro Side Awning & Oasis Power Front Entrance Door Awning
- Bunk Windows*
- Double-Pane Tinted Safety Glass Windows*
- Fantastic® Vent with Rain Sensor in Kitchen and Bathroom

*Check with dealership on floor plan availability and complete listing of features.

CONSTRUCTION & SPECIFICATIONS

Like a fine home, Ventana is framed 16 inches on center, allowing the best placement of outlets, switches and other components. Newmar uses only Sikaflex elastic adhesive throughout Ventana’s construction – one of the strongest bonding agents available. It seals against air and water and helps dampen sound and vibration. Electrical wiring holes in Ventana’s aluminum frame are ringed with plastic grommets to protect wires from chafing. And Newmar’s Total Comfort™ Central Air is two separate, fully ducted systems that distribute cool air and remove warm air.



- ROOF R-VALUE = 19**

 - a. BriteTEK™ Roof (optional one-piece fiberglass roof)
 - b. 9mm Wood Decking
 - c. Fiberglass Batten Insulation
 - d. A/C Ducting
 - e. Aluminum Roof Truss
 - f. Kraft Paper Vapor Barrier
 - g. 5/8” Bead Foam
 - h. 3/16” Panel
 - i. Padded Vinyl Overlay
- SIDEWALL R-VALUE = 11**

 - j. 3/16” Plywood Interior Wall
 - k. 5/8” Bead Foam
 - l. Kraft Paper Vapor Barrier
 - m. Fiberglass Batten Insulation
 - n. 3/16” Plywood Exterior Wall
 - o. Composite One-Piece Gel Coat Exterior Sidewall
 - p. 16” On Center Aluminum Framing with 3 1/2” Header
- FLOOR R-VALUE = 16**

 - q. Carpet/Tile
 - r. Carpet Padding
 - s. 5/8” Floor Decking
 - t. Fiberglass Batten Insulation
 - u. 2” x 3” Wood Framing
 - v. Polyethylene Moisture Barrier
 - w. Foam Panels (Noise Protection)
 - x. Aluminum Ducting
- BASEMENT R-VALUE = 4**

 - y. Cargo Liner
 - z. 3/8” Floor Decking
 - aa. 3/16” Luan Panel
 - bb. 1 1/2” Bead Foam
 - cc. Aluminum Sheeting (Prevents Distortion)
- Other Features:**

 - 1. 13.5M Penguin™ Heat Pump Central Air Conditioners (2)
 - 2. One-Piece Windshield
 - 3. Coated Aluminum Wheels
 - 4. Double-Pane Tinted Safety Glass Windows
 - 5. Side-Hinged Baggage Doors w/Optional Pull Out Tray

VENTANA LE CHASSIS SPECIFICATIONS

Floorplan	Engine HP	Axle Ratio	Fuel Cap.	Wheelbase	Front GAWR*	Rear GAWR*	Tag GAWR*	GVWR*	GCWR*	App. UVW	App. NCC
3433	340	4.78	100 gal.	206”	12,000 lb.	19,000 lb.	0	31,000 lb.	33,000 lb.	25,000 lb.	6,000 lb.
3434	340	4.78	100 gal.	206”	12,000 lb.	19,000 lb.	0	31,000 lb.	33,000 lb.	25,100 lb.	5,900 lb.
3634	340	4.78	100 gal.	228”	12,000 lb.	19,000 lb.	0	31,000 lb.	33,000 lb.	24,800 lb.	6,200 lb.
3843	340	4.78	100 gal.	252”	12,000 lb.	19,000 lb.	0	31,000 lb.	33,000 lb.	25,600 lb.	5,400 lb.
3862	340	4.78	100 gal.	252”	12,000 lb.	19,000 lb.	0	31,000 lb.	33,000 lb.	25,000 lb.	6,000 lb.

Lengths, heights, widths and dry weights are approximate. Weight will vary based on optional equipment added to the above base weight.

GAWR: Gross Axle Weight Rating is the maximum permissible weight for an axle.

GVWR: Gross Vehicle Weight Rating is the maximum permissible weight for a fully loaded motor coach.

GCWR: Gross Combination Weight Rating is the value specified by the manufacturer of the vehicle as the maximum allowable loaded weight of this motor coach and any towed trailer or towed vehicle.

UVW: Unloaded Vehicle Weight is the weight of this motorcoach as built at the factory with full fuel, engine oil and coolants. The UVW does not include cargo, fresh water, propane gas or dealer-installed accessories.

NCC: Net Carrying Capacity is the maximum weight of all occupants, including the driver, personal belongings, food, fresh water, waste water, propane gas, tools, tongue weight of towed vehicle, dealer installed accessories, etc., that can be carried by the motorcoach.

*Specifications supplied by the chassis manufacturer.

VENTANA CHASSIS SPECIFICATIONS

Floorplan	Engine HP	Axle Ratio	Fuel Cap.	Wheelbase	Front GAWR*	Rear GAWR*	Tag GAWR*	GVWR*	GCWR*	App. UVW	App. NCC
3433	360	4.78	100 gal.	206”	12,000 lb.	20,000 lb.	0	32,000 lb.	42,000 lb.	25,700 lb.	6,300 lb.
3434	360	4.78	100 gal.	206”	12,000 lb.	20,000 lb.	0	32,000 lb.	42,000 lb.	25,600 lb.	6,400 lb.
3634	360	4.78	100 gal.	228”	12,000 lb.	20,000 lb.	0	32,000 lb.	42,000 lb.	25,700 lb.	6,300 lb.
4018	380	4.63	100 gal.	245+TAG	14,000 lb.	20,000 lb.	10,000 lb.	44,000 lb.	54,000 lb.	30,600 lb.	13,400 lb.
4038	380	4.63	100 gal.	245+TAG	14,000 lb.	20,000 lb.	10,000 lb.	44,000 lb.	54,000 lb.	30,500 lb.	13,500 lb.
4324	380	4.63	100 gal.	269+TAG	14,000 lb.	20,000 lb.	10,000 lb.	44,000 lb.	54,000 lb.	31,600 lb.	12,400 lb.
4337	380	4.63	100 gal.	269+TAG	14,000 lb.	20,000 lb.	10,000 lb.	44,000 lb.	54,000 lb.	32,000 lb.	12,000 lb.
4346	380	4.63	100 gal.	269+TAG	14,000 lb.	20,000 lb.	10,000 lb.	44,000 lb.	54,000 lb.	32,500 lb.	11,500 lb.

CUMMINS ONAN • *Performance You Rely On™*

An innovator in standby and mobile power generation for more than 80 years, Cummins Onan generators are built by Cummins Power Generation, a globally recognized name in the design and manufacture of power generation products and services.

www.cumminsonan.com

FREIGHTLINER CUSTOM CHASSIS • *Driven by You*

A subsidiary of Daimler Trucks North America, Freightliner Custom Chassis Corporation manufactures premium chassis that have become renowned for their exceptional ride and handling characteristics, tight turning radius and extraordinary dependability.

www.freightlinerchassis.com

SONY • *make.believe™*

One of the most comprehensive entertainment and technology companies in the world, Sony Corporation is a leading manufacturer of audio, video, communications and information technology products for consumers and professionals alike.

www.sony.com

SPARTAN CHASSIS • *The Premier Foundation*

Spartan Chassis is a world class leader in the design, engineering and flexible production of chassis and components that consistently deliver superior performance, exceptional safety ratings and technological innovations.

www.spartanchassis.com

Newmar.

Where the finest names in quality and performance are along for the ride.

To assure that you experience only the best in comfort, control and unsurpassed convenience in our incomparable family of Luxury Coaches, Newmar partners with the most prestigious names in mobile lifestyle, entertainment and technology. These brands are leaders in their fields—and legends in providing customers with new, unsurpassed levels of quality and reliability.

Best in class performance from names you can trust. At Newmar, that's our difference. And our promise.



Mahlon Miller, Newmar founder, and Matthew Miller, Newmar president, lifelong motor coach enthusiasts

Gather.

Where the Newmar owners are.

The Newmar Kountry Klub is an exclusive club for owners of fine Newmar products that offers many advantages and benefits to its members. Learn more at: www.newmarkountryklub.com

Trust.

The strongest possible foundation for a motor coach.

According to Newmar president Matthew Miller, “Customers say they're loyal to us because they trust us to stand behind our products, from support, parts and service to paying our warranties. It feels good to own a coach that has all of that behind it.”

How do we sustain this high level of service? At Newmar, there's a Miller way of doing things. These principles guide us every day. Courtesy. Integrity. And reliability. So when you buy from Newmar, you know that every single person who touches your coach or talks with you has your back. Period.



WHEN YOU KNOW THE DIFFERENCE

NEWMAR EXPRESS LIMITED WARRANTY

Every Ventana and Ventana LE Diesel Pusher is backed by Newmar's one-year limited warranty/unlimited miles. Ask your Newmar dealer for details.

LIMITED FIVE-YEAR STRUCTURAL WARRANTY

If any part of your Newmar recreational vehicle superstructure (which is the steel/aluminum structure of the sidewall, roof or frame) fails to perform properly within five years from the date of purchase because of faulty workmanship or material supplied by Newmar, it will be repaired without charge for either parts or labor by Newmar. This structural warranty is available only to the original purchaser and is non-transferable.

Some features in our literature are optional. Colors and finishes are photographic representations. The actual materials may look different. Prices, specifications and floorplans are subject to change at Newmar's discretion, without prior notice or obligation. Please see your dealer for actual samples and specifications.



WHEN YOU KNOW THE DIFFERENCE™

NEWMAR CORPORATION

355 N DELAWARE ST
PO BOX 30
NAPPANEE IN 46550-0030
574-773-7791 Fax 574-773-2895

www.newmarcorp.com