

2013 VENTANA LE & VENTANA - Diesel Motor Coach



NEWMAR CORP.



WHEN YOU KNOW THE DIFFERENCESM

2013
Ventana LE
Ventana
Diesel Motor Coach

2013 VENTANA

Diesel Motor Coach

No one makes it easier than Newmar to harness high end diesel power at a surprisingly affordable price. With the 2013 Ventana, it all comes together – a gorgeous exterior, a handsomely appointed cabin and standards that feel like extras—all designed to bring you the ride you've always deserved.



*Ventana Exterior
Monterey Designer Style*

FEATURES AT A GLANCE

- Full-Paint Masterpiece™ Finish with front protective film
- Comfort Drive™ Steering with adjustable control
- Freightliner® Custom Chassis with 360HP Cummins® ISB Engine on 34'–36' floorplans
- Freightliner® Custom Chassis Tag Axle with 380HP Cummins® ISC Engine on 40'–43' floorplans
- 8.0-kW Cummins Onan® Diesel Quiet Series Generator
- Cruise control and anti-lock braking system
- External entertainment center in sidewall with Sony® 40" LCD TV*



Cummins Onan



The price is right. The performance is righteous.

More room, more power, more amenities. However you measure quality, Ventana delivers. Both the 360HP Cummins® ISB diesel and the 380HP Cummins® ISC engine can handle any road. And with a Flexsteel® captain's chair, Newmar's exclusive Comfort Drive™ Steering and a wealth of fingertip cockpit controls, you've never had an easier time behind the wheel. Cargo stows easily – and almost endlessly – with heavy duty slide out trays. Ventana's side wall also has the option to reveal a Sony® 40" HDTV entertainment center.

*Optional



Ventana
Monterey Décor Scheme with Verona Maple Glazed
Cabinetry in Floorplan # 4346

Crafted to please. Priced to astound.

Inside your 2013 Ventana, the look is unmistakably Newmar. From its master crafted solid wood glazed cabinet doors, now in Sienna Maple.* To its striking new floor design, laid out in 16" x 16" tile with accent inserts to its Flexsteel® sleeper sofa and matching lounge, now with the same enhanced comfort foam found in residential furniture. And we haven't even mentioned Ventana's top shelf kitchen with stainless appliances, solid surface counters and hidden cabinetry hinges – for plentiful storage with a cleaner look. How much enjoyment can we fit into Ventana? You're about to find out.



* Optional

Simple pleasures. Solid performance.

Ventana's Sony® HDTV/DVD System acts as a kitchen/living area centerpiece. A pull out island under the TV adds serving space and the expandable solid surface dinette with hidden leaf creates quick, convenient seating for four.



SONY®

FEATURES AT A GLANCE

- Sienna Maple cabinets with designer mitered glazed doors*
- Polished solid surface kitchen countertop w/undermounted acrylic sink
- Flexsteel® Ultralux leather furniture
- Polished porcelain tile floor in kitchen, bathroom and living area
- Sony® HDTV/DVD system
- MCD day/night shades*



Slip between the covers of a dream come true.

With Ventana, the end of a long day signals the beginning of a blissful night. The king size bed lets you sink into unmatched comfort and style, relaxing against the woven faux leather of an individually crafted hardwood headboard. Above the bed, wraparound storage cabinets help to keep everything in its place.

Across the bedroom, even more storage – plus MCD day/night shades for anytime privacy. Not tired yet? No problem. A second Sony® HDTV entertainment system with DVD means the stars can come out whenever you wish.

Extras you can appreciate. Names you can trust.

There's always something special waiting to be discovered in your Ventana, like an optional handheld Dyson® vacuum, cleverly hidden in the bedroom wardrobe. The best names in quality come together when your coach's name is Newmar.

*Optional



SONY.

FEATURES AT A GLANCE

- Sony® LCD TV and DVD player in bedroom
- King size bed with quilted bedspread and accent pillow
- Polished porcelain tile floor in kitchen, bathroom and living area
- Carpeting in living room and bedroom
- Sleep Number® deluxe air mattress*





FEATURES AT A GLANCE

- Standard size radius shower
- Polished porcelain floor tile in kitchen, bathroom, and living areas
- Demand water system
- Two-piece washer and dryer in walk-in closet*

Comfortably elegant. Beautifully practical.

A spacious stand up shower welcomes you to the comforts of Ventana's master bath. This roomy retreat features hardwood cabinetry, solid surface vanity counters with an integrated bowl and backsplash, and a designer toilet.

Special touches in your Ventana bathroom include a skylight port to brighten your showers, a vanity step drawer that pulls out for a convenient boost plus a mid-cabin half bath for visiting guests.

Ingeniously efficient.

Ventana's polished porcelain bathroom flooring leads to a handy walk-in closet with a two-piece washer/dryer.* With Newmar, convenience is always just a few steps away.

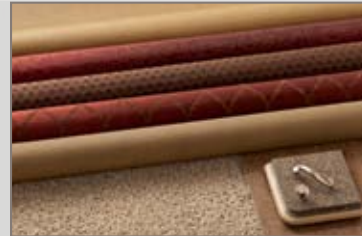


EXTERIOR DESIGN & DÉCOR OPTIONS

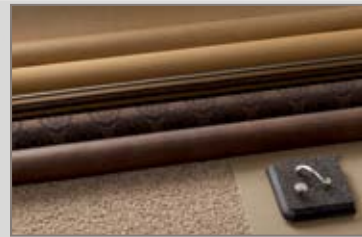
MONTEREY



NAPA



SONOMA



WOOD OPTIONS



EMPIRE MAPLE WITH GLAZED DOORS



SIENNA MAPLE WITH GLAZED DOORS



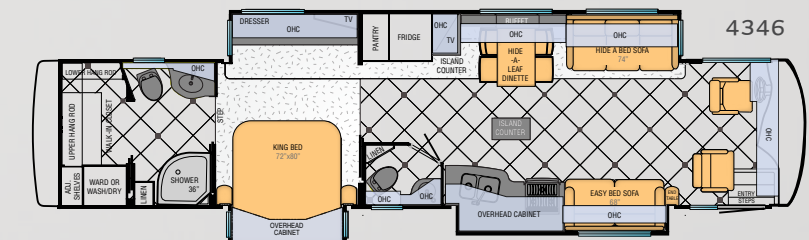
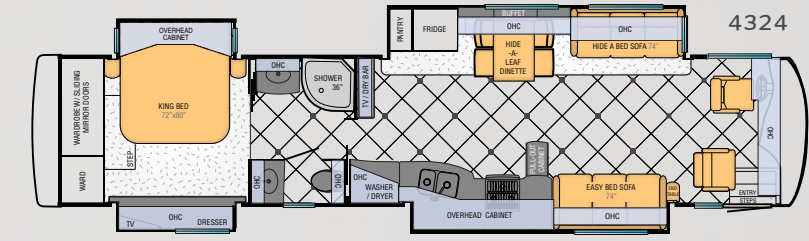
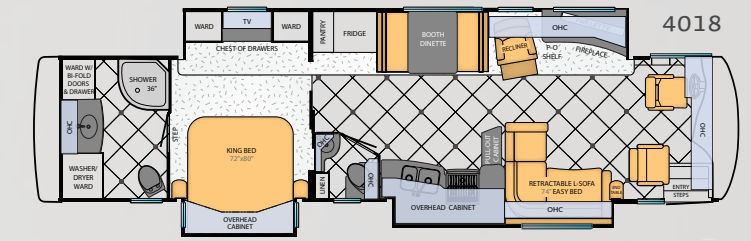
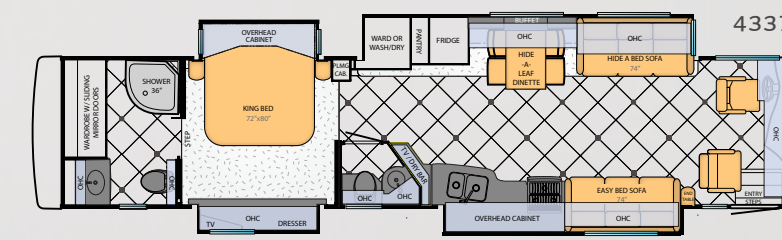
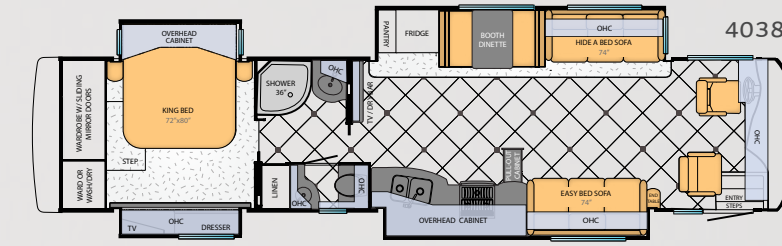
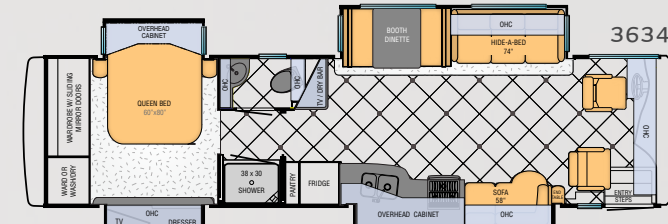
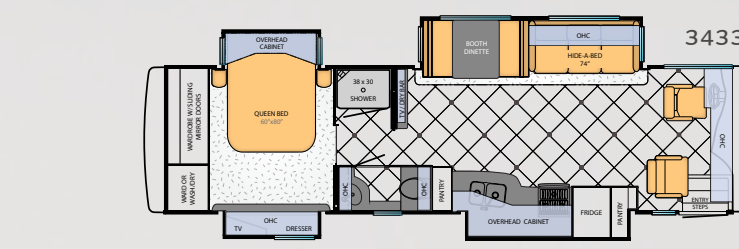
MANHATTAN MAPLE WITH GLAZED DOORS



VERONA MAPLE WITH GLAZED DOORS

FLOORPLAN SPECIFICATIONS

Floorplan	App. Overall Length	App. Width	App. Overall Height	Interior Width	Interior Height	Grey	Sewage	Water	Propane	Furnace
3433	34' 10"	101.5"	12' 5"	95.5"	84"	65 gal.	45 gal.	105 gal.	32 gal.	54,000 btu
3434	34' 10"	101.5"	12' 5"	95.5"	84"	65 gal.	45 gal.	105 gal.	32 gal.	35,000 btu
3634	36' 08"	101.5"	12' 5"	95.5"	84"	65 gal.	45 gal.	105 gal.	32 gal.	54,000 btu
4018	40' 10"	101.5"	12' 8"	95.5"	84"	65 gal.	45 gal.	105 gal.	32 gal.	54,000 btu
4038	40' 10"	101.5"	12' 8"	95.5"	84"	65 gal.	45 gal.	105 gal.	32 gal.	54,000 btu
4324	42' 10"	101.5"	12' 8"	95.5"	84"	65 gal.	45 gal.	105 gal.	32 gal.	50,000 btu
4337	42' 10"	101.5"	12' 8"	95.5"	84"	65 gal.	45 gal.	105 gal.	32 gal.	50,000 btu
4346	42' 10"	101.5"	12' 8"	95.5"	84"	65 gal.	45 gal.	105 gal.	32 gal.	50,000 btu



CONSTRUCTION & SPECIFICATIONS

Like a fine home, Ventana is framed 16 inches on center, allowing the best placement of outlets, switches and other components. Newmar uses only Sikaflex elastic adhesive throughout Ventana's

construction – one of the strongest bonding agents available. It seals against air and water and helps dampen sound and vibration. Electrical wiring holes in Ventana's aluminum frame are ringed with

plastic grommets to protect wires from chafing. And Newmar's Total Comfort™ Central Air is two separate, fully ducted systems that distribute cool air and remove warm air.



VENTANA LE CHASSIS SPECIFICATIONS

Floorplan	Engine HP	Axle Ratio	Fuel Cap.	Wheelbase	Front GAWR*	Rear GAWR*	Tag GAWR*	GVWR*	GCWR*	App. UVW	App. NCC
3433	340	4.78	100 gal.	206"	12,000 lb.	19,000 lb.	0	31,000 lb.	33,000 lb.	25,000 lb.	6,000 lb.
3434	340	4.78	100 gal.	206"	12,000 lb.	19,000 lb.	0	31,000 lb.	33,000 lb.	25,100 lb.	5,900 lb.
3634	340	4.78	100 gal.	228"	12,000 lb.	19,000 lb.	0	31,000 lb.	33,000 lb.	24,800 lb.	6,200 lb.
3843	340	4.78	100 gal.	252"	12,000 lb.	19,000 lb.	0	31,000 lb.	33,000 lb.	25,600 lb.	5,400 lb.
3862	340	4.78	100 gal.	252"	12,000 lb.	19,000 lb.	0	31,000 lb.	33,000 lb.	25,000 lb.	6,000 lb.

VENTANA CHASSIS SPECIFICATIONS

Floorplan	Engine HP	Axle Ratio	Fuel Cap.	Wheelbase	Front GAWR*	Rear GAWR*	Tag GAWR*	GVWR*	GCWR*	App. UVW	App. NCC
3433	360	4.78	100 gal.	206"	12,000 lb.	20,000 lb.	0	32,000 lb.	42,000 lb.	25,700 lb.	6,300 lb.
3434	360	4.78	100 gal.	206"	12,000 lb.	20,000 lb.	0	32,000 lb.	42,000 lb.	25,600 lb.	6,400 lb.
3634	360	4.78	100 gal.	228"	12,000 lb.	20,000 lb.	0	32,000 lb.	42,000 lb.	25,700 lb.	6,300 lb.
4018	380	4.63	100 gal.	245+TAG	14,000 lb.	20,000 lb.	10,000 lb.	44,000 lb.	54,000 lb.	30,600 lb.	13,400 lb.
4038	380	4.63	100 gal.	245+TAG	14,000 lb.	20,000 lb.	10,000 lb.	44,000 lb.	54,000 lb.	30,500 lb.	13,500 lb.
4324	380	4.63	100 gal.	269+TAG	14,000 lb.	20,000 lb.	10,000 lb.	44,000 lb.	54,000 lb.	31,600 lb.	12,400 lb.
4337	380	4.63	100 gal.	269+TAG	14,000 lb.	20,000 lb.	10,000 lb.	44,000 lb.	54,000 lb.	32,000 lb.	12,000 lb.
4346	380	4.63	100 gal.	269+TAG	14,000 lb.	20,000 lb.	10,000 lb.	44,000 lb.	54,000 lb.	32,500 lb.	11,500 lb.

ROOF R-VALUE = 19

- BriteTEK™ Roof (optional one-piece fiberglass roof)
- 9mm Wood Decking
- Fiberglass Batten Insulation
- A/C Ducting
- Aluminum Roof Truss
- Kraft Paper Vapor Barrier
- 5/8" Bead Foam
- 3/16" Panel
- Padded Vinyl Overlay

SIDEWALL R-VALUE = 11

- 3/16" Plywood Interior Wall
- 5/8" Bead Foam
- Kraft Paper Vapor Barrier
- Fiberglass Batten Insulation
- 3/16" Plywood Exterior Wall
- Composite One-Piece Gel Coat Exterior Sidewall
- 16" On Center Aluminum Framing with 3 1/2" Header

FLOOR R-VALUE = 16

- Carpet/Tile
- Carpet Padding
- 5/8" Floor Decking
- Fiberglass Batten Insulation
- 2" x 3" Wood Framing
- Polyethylene Moisture Barrier
- Foam Panels (Noise Protection)
- Aluminum Ducting

BASEMENT R-VALUE = 4

- Cargo Liner
- 3/8" Floor Decking
- 3/16" Luan Panel
- 1 1/2" Bead Foam
- Aluminum Sheeting (Prevents Distortion)

- 13.5M Penguin™ Heat Pump Central Air Conditioners (2)
- One-Piece Windshield
- Coated Aluminum Wheels
- Double-Pane Tinted Safety Glass Windows
- Side-Hinged Baggage Doors w/Optional Pull Out Tray

CHASSIS FEATURES

- Freightliner® Custom Chassis XCR with 360Hp Cummins® ISB Engine on 34'- 36' Floorplans
- Freightliner® Custom Chassis Tag Axle XCR with 380Hp Cummins® ISC Engine on 40'- 43' Floorplans
- Accuride Accu-Shield™ Aluminum Wheels
- Hydraulic Leveling Jacks
- Cruise Control
- Comfort Drive™ Steering with Adjustable Control
- Manual Tilt and Telescope Steering Column with VIP Smart Wheel
- Recessed Fuel Fills with Crossover to Fill from Either Side
- Back Up Alarm
- Anti-Lock Braking System

APPLIANCES & ACCESSORIES

- 30" Convection Microwave Oven
- Three-Burner Cooktop with Piezzo Ignition
- Solid Surface Range Cover
- Norcold® 10-Cu.Ft. Refrigerator
- Brushed Aluminum Refrigerator Front
- 10-Gal. Gas/Electric Water Heater with Direct-Spark Ignition*
- One-Piece Compact Washer/Dryer Prep *

- Sony® LCD TV and DVD Player in Living and Bedroom Areas*
- Sony® 32" LCD TV in Bedroom
- TV on Power Lift in Living Area*
- Fireplace in Living Area*
- AM/FM Dash Radio with MP3 Adapter and CD Player
- Sony® Surround Sound System with Sub-woofer
- Rear View Color Monitor System with Audio
- Side View Cameras
- Roof Mounted Digital TV Antenna with Power Booster
- Satellite Dish Prep

AIR CONDITIONING & HEATING

- Two 13.5M Penguin™ Heat Pump Central Air Conditioners
- Propane Furnace with Ducted Heat on 34'- 40' Floorplans
- Hydronic Zone Heating System with Continuous Hot Water on 43' Floorplans
- Dash Heater & High Output Air Conditioner
- Driver & Passenger Dash Overhead Ventilation System
- Propane Leak Detector
- Wall Mounted Sensors for Heating and Air Conditioning

CABINETS & FURNITURE

- Empire Maple Cabinets with Mitered Designer Glazed Doors
- Concealed Hinges on Cabinet Doors
- Solid Surface Countertop in Kitchen with Undermounted Acrylic Sink and Flush Sink Covers
- Solid Surface Countertop in Bathroom with Integrated Sink
- Solid Surface Countertops on Nightstands and Chest of Drawers
- Adjustable Pull Out Pantry Shelves*
- Residential Style Full Extension Ball Bearing Drawer Guides
- Flexsteel® Ultralux Leather Furniture
- Flexsteel® Ultralux Leather Driver/ Passenger Seats with 6-Way Power, Power Lumbar and Ergo-Flex Arms
- King Bed with Quilted Bedspread and Accent Pillow
- Built-In Booth Dinette with Drawers*

ELECTRICAL FEATURES

- 8.0-kW Cummins Onan® Diesel Quiet Series Generator
- 50-Amp Electrical Service with Flexible Cord
- Four 6-Volt House Batteries on Pull Out Tray

- Battery Disconnect Switch
- 110-Volt Exterior Receptacle
- 5-Watt Solar Panel
- 2000-Watt Inverter
- Emergency Start Switch
- Door Side Exterior Security Light
- Midship Side Turn Signals
- Halogen Lights Recessed in Ceiling and Overhead Cabinets
- Slideout Information Voice Module
- Manually Operated Hold-To-Run Slideout Switch
- ICC Light Flasher Switch
- 12-Volt Auxiliary Receptacle on Dashboard
- Exterior TV Jack
- Interior Courtesy Lights

PLUMBING & BATH FEATURES

- Demand Water System with SHURflo® Pump
- Sewage Holding Tank Rinse
- Water Heater Bypass System*
- Theford™ Aqua Magic Plus China Stool*
- Monitor Panel
- Monoplex Water Pump Switch System
- Fiberglass Shower with Glass Door
- Water Filter with Drink Dispenser at Kitchen Sink
- Water Filter for Entire Unit

WINDOWS, AWNINGS & VENTS

- Double-Pane Tinted Safety Glass Windows
- Fan-Tastic® Vent with Rain Sensor in Kitchen and Bathroom
- Skylight in Bathroom*
- Dometic® 9000 Plus Side Awning with Aluminum Weather Shield
- Dometic® Oasis Manual Front Entrance Door Awning
- Dometic® Slideout Awning Covers
- One-Piece Tinted Windshield

INTERIOR FEATURES

- Padded Vinyl Ceiling with Feature Panels
- Day/Night Pleated Window Shades and Lambrequins
- Mini Blinds in Bathroom
- Porcelain Tile Floor in Kitchen, Bathroom and Living Area
- Carpeting in Living Room and Bedroom
- Day/Night Privacy Shades on Driver/Passenger Side Windows
- Power Sun Shades and Manual Night Shades for Windshield

EXTERIOR FEATURES

- Full-Paint Masterpiece Finish™ with Front Protective Film
- One-Piece Bonded Windshield

- Convex Exterior Mirrors with Remote Control, Defrost and Turn Signals
- Entrance Door with Automatic Double Step
- Power Flush Stepwell Cover
- Lighted Exterior Storage Compartments with Cargo Liner, Controlled by Interior Master Switch
- Rear Hitch for Towing Car with Two Extra 14-Gauge Wires
- Assist Handle at Entrance Door
- Mud Flaps
- Rear Protective Full-Width Tow Guard
- Rear Ladder
- Undercoating

CONSTRUCTION FEATURES

- BriteTEK™ Roof with Walkable Decking
- Gel Coated Fiberglass Exterior Sides
- Gel Coated Fiberglass Front and Rear Caps
- Aluminum Frame Sidewalls and Roof Construction, 16" on Center
- 5/8" Foam Insulation Laminated in Sidewalls and Ceiling
- 5/8" Foam Insulation Laminated in Sidewalls and Ceiling

OPTIONS

AIR CONDITIONING AND HEATING

- Two 15M Penguin™ Heat Pump Air Conditioners in Place of Standard
- Hydronic Zone Propane Heating System*
- Three 15M Penguin Heat Pump Air Conditioner and Energy Management System*

APPLIANCES & ACCESSORIES

- Norcold® 12-Cu.Ft. Four-Door Refrigerator with Icemaker*
- Maytag® Residential Refrigerator with Icemaker and Water Dispenser w/2000 Watt Pure Sine
- Inverter and 2 Extra Batteries
- Maytag® All Electric Refrigerator, 2-Burner Cooktop, 4 Extra Batteries and 2800-Watt Pure Sine Inverter

- GE® All Electric Refrigerator, 2-Burner Cooktop, 4 Batteries and 2800-Watt Pure Sine Inverter with Hydronic Diesel Heat
- Dyson Hand Held Vacuum
- One-Piece Washer/Dryer *
- Whirlpool® 2-Piece Washer/Dryer*
- Sony® 32" LCD TV in Front Overhead*
- Sony® 46" LED TV on Power Lift Behind Door Side Sofa
- External Entertainment Center in Sidewall with Sony® 40" LCD TV*
- External Entertainment Center in Storage Compartment with Sony® 32" LCD TV*
- Automatic Satellite without Receiver

- In-Motion Satellite without Receiver
- High Definition Wiring
- Side View Cameras
- Preprogrammed Universal Remote Control
- Dash Radio/CD Player with Portable Tom Tom® Navigation System and MP3 Adapter
- Central Vacuum with Deluxe Tool Kit
- 11" Flip Down LCD TV/DVD and Headphones at Each Bunk Bed *

CABINETS & FURNITURE

- Queen Bed
- Sienna Maple Cabinets with Glazed Doors
- Manhattan Maple Cabinets with Glazed Doors
- Verona Maple Cabinets with Glazed Doors

- Hide-A-Bed Sofa with Air Mattress*
- Hidden Leaf Dinette Table with 4 Chairs and Larger Dinette Window*
- Round Hardwood Dinette Table with 4 Fixed Chairs and Larger Dinette Window *
- Sleep Number Deluxe® Air Mattress
- Power Footrest on Passenger Seat
- Combination Desk/Dinette Table with 2 Fixed Chairs and 2 Folding Chairs*
- Combination Desk/Dinette with Freestanding Hidden-Leaf Table, 2 Fixed and 2 Folding Chairs
- Combination Desk/Dinette with Buffet Dinette Table, 2 Fixed and 2 Folding Chairs
- Combination Desk/Dinette with Rollaway Table, 2 Fixed and 2 Folding Chairs
- Combination Desk/Dinette with Freestanding Hidden-Leaf Table, 2 Fixed and 2 Folding Chairs

- Flexsteel® Ultralux Leather Recliners*
- Extenda L Sofa on Off Door Side
- Fold & Tumble Sofa with Air Mattress on Door Side*

ELECTRICAL FEATURES

- Energy Management System
- LED Lights in Place of Fluorescent Lights

EXTERIOR FEATURES

- Large Chrome Exterior Mirrors
- Large Storage Tray with Access from One Side or Either Side *
- Large Storage Tray

INTERIOR FEATURES

- Halogen Lighting
- Floor Tile Extended into Bedroom Area
- Safe Located in Bedroom Wardrobe
- MCD Day/Night Shades

CONSTRUCTION FEATURES

- One-Piece Molded Fiberglass Roof
- Mechanical Lock Arms on Four Slideout Rooms
- Power Baggage Door Locks, Keyless Entrance Door with Touch Pad and Door Bell

PLUMBING & BATH FEATURES

- 110-Volt Heat Pads for Holding Tanks
- Bathtub*

WINDOWS, AWNINGS, & VENTS

- Dometic® 9000 Window Awning
- Dometic® Weather Pro Side Awning and Oasis Power Front Entrance Door Awning
- Kitchen Window

*Check with dealership on floor plan availability and complete listing of features.

Newmar.

Where the finest names in quality and performance are along for the ride.

To assure that you experience only the best in comfort, control and unsurpassed convenience in our incomparable family of Luxury Coaches, Newmar partners with the most prestigious names in mobile lifestyle, entertainment and technology. These brands are leaders in their fields—and legends in providing customers with new, unsurpassed levels of quality and reliability.

Best in class performance from names you can trust. At Newmar, that's our difference. And our promise.



Mahlon Miller, Newmar founder, and Matthew Miller, Newmar president, lifelong motor coach enthusiasts

Gather.

Where the Newmar owners are.

The Newmar Kountry Klub is an exclusive club for owners of fine Newmar products that offers many advantages and benefits to its members. Learn more at: www.newmarkountryklub.com

Trust.

The strongest possible foundation for a motor coach.

According to Newmar president Matthew Miller, "Customers say they're loyal to us because they trust us to stand behind our products, from support, parts and service to paying our warranties. It feels good to own a coach that has all of that behind it."

How do we sustain this high level of service? At Newmar, there's a Miller way of doing things. These principles guide us every day. Courtesy. Integrity. And reliability. So when you buy from Newmar, you know that every single person who touches your coach or talks with you has your back. Period.

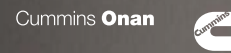


WHEN YOU KNOW THE DIFFERENCE

CUMMINS ONAN · Performance You Rely On™

An innovator in standby and mobile power generation for more than 80 years, Cummins Onan generators are built by Cummins Power Generation, a globally recognized name in the design and manufacture of power generation products and services.

www.cumminsonan.com



FREIGHTLINER CUSTOM CHASSIS · Driven by You

A subsidiary of Daimler Trucks North America, Freightliner Custom Chassis Corporation manufactures premium chassis that have become renowned for their exceptional ride and handling characteristics, tight turning radius and extraordinary dependability.

www.freightlinerchassis.com



SONY · make.believe™

One of the most comprehensive entertainment and technology companies in the world, Sony Corporation is a leading manufacturer of audio, video, communications and information technology products for consumers and professionals alike.

www.sony.com



SPARTAN CHASSIS · The Premier Foundation

Spartan Chassis is a world class leader in the design, engineering and flexible production of chassis and components that consistently deliver superior performance, exceptional safety ratings and technological innovations.

www.spartanchassis.com



NEWMAR EXPRESS LIMITED WARRANTY

Every Ventana and Ventana LE Diesel Pusher is backed by Newmar's one-year limited warranty/unlimited miles. Ask your Newmar dealer for details.

LIMITED FIVE-YEAR STRUCTURAL WARRANTY

If any part of your Newmar recreational vehicle superstructure (which is the steel/aluminum structure of the sidewall, roof or frame) fails to perform properly within five years from the date of purchase because of faulty workmanship or material supplied by Newmar, it will be repaired without charge for either parts or labor by Newmar. This structural warranty is available only to the original purchaser and is non-transferable.

Some features in our literature are optional. Colors and finishes are photographic representations. The actual materials may look different. Prices, specifications and floorplans are subject to change at Newmar's discretion, without prior notice or obligation. Please see your dealer for actual samples and specifications.



WHEN YOU KNOW THE DIFFERENCE™

NEWMAR CORPORATION

355 N DELAWARE ST
PO BOX 30
NAPPANEE IN 46550-0030
574-773-7791 Fax 574-773-2895

www.newmarcorp.com