

# LONDON AIRE

2016 LUXURY MOTOR COACH



WHEN YOU KNOW THE DIFFERENCE <sup>SM</sup>



## JOHN SAMMUT

*VP of Sales and Marketing,  
Newmar Corporation*

As Vice President of Sales and Marketing, my job is to work side-by-side with our dealers to ensure our customers enjoy the best possible purchase experience. Through the Newmar Professional Product Institute – NPPI, for short – we are able to train Newmar dealer staff on our products, our manufacturing process and our guiding principles. The industry's first online training and certification program, NPPI has graduated well over 1,000 dealer sales and service professionals since 2012.

## A PERFECT 3-FOR-3

Described as “a home run” by Family Motor Coaching Magazine, London Aire has garnered praise throughout the RV industry for its incredible ability to hit three major criteria – power, luxury and price. By combining a 600-horsepower Cummins® ISX diesel engine with a host of luxury features including Newmar's Full-Paint Masterpiece Finish® with Cut & Buff, high-gloss porcelain tile flooring and a Bluetooth®-compatible Bose CineMate® home theater system, London Aire represents the absolute best value at its price point.

The 2016 London Aire delivers you with even more, including Newmar's latest engineering breakthroughs. More Floor brings full tile flooring to the flat-floor slide-outs in the kitchen, living area and master bedroom. The all-new STAR Foundation adds strength and support to an already stout Freightliner® chassis. Finally, the 2016 London Aire boasts Newmar's Cathedral Ceiling, which adds six inches of additional headroom in the rear master bath in select bath-and-a-half models.





# LONDON AIRE

SACRIFICE NOTHING

Freightliner® Tag Axle SL chassis with 600 HP Cummins® ISX diesel engine

11-speaker, 360-watt custom-tuned JBL® premium cockpit audio system

Comfort Drive™ Steering System with Passive Steer tag axle technology

All-new Cathedral Ceiling featured on select bath-and-a-half models



WHEN YOU KNOW THE DIFFERENCE <sup>SM</sup>









Hatteras Décor with Wicker Glazed Maple Cabinetry – Floor Plan 4503

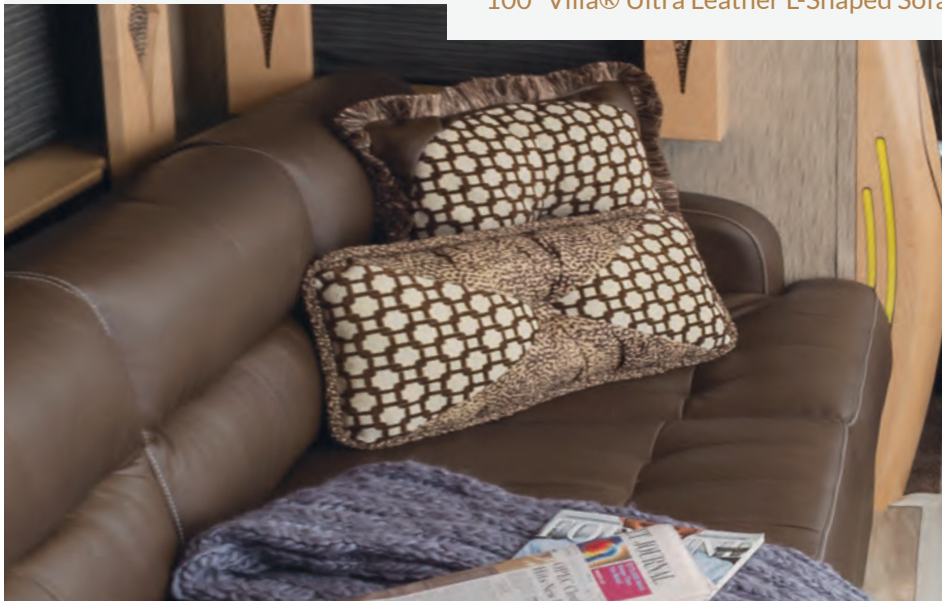


## LUXURY WITHOUT LIMITS

Designed to deliver a theater-quality experience, The 2016 London Aire's multiplex LED lighting can be adjusted when you want to enjoy the 48" Sony® LED TV with Blu-ray/DVD player. Boosting the entertainment value, London Aire now features a standard Bluetooth®-compatible Bose CineMate® home theater system.



100" Villa® Ultra Leather L-Shaped Sofa







Available Combination Desk/Dinette with Buffet Space





Polished Solid-Surface Countertop with Convection Microwave and Optional Dishwasher



## PREMIUM PRACTICALITY

Two words, one amazing innovation: More Floor. Available for the first time, More Floor brings high-gloss Italian-made porcelain tile to the flat-floor slide-outs in the kitchen, living area and master bedroom. Joined by hardwood cabinetry and polished solid-surface countertops, London Aire is every bit a chef's paradise.

More than just eye-pleasing, the 2016 London Aire's kitchen comes fully stocked with all sorts of amenities. Fit with a large wood pantry, under-mounted stainless steel sink and recessed two-burner gas cooktop, the culinary possibilities are endless. Opt for the available premium dishwasher and never wash another dish again.

Stone and Glass Mosaic Backsplash







King-Size Sleep Number® Adjustable Bed with Quilted Bedspread and Accent Pillows



Hardwood Cabinets with 40" Sony® LED TV



## EXPERIENCE EXCELLENCE INCH BY INCH

The London Aire master bedroom is a place where the details are just as important as the accommodations. Details like a wood-framed quilted leather headboard, which acts as the finishing touch atop the King-size bed with available Sleep Number® adjustable mattress.



Full Wardrobe Featuring Recessed Storage Shelves

The pattern continues with touches like a lit wardrobe decorated with cedar paneling and high-polish solid-surface countertops. Of course, London Aire's sleeping quarters also include premium electronics, led by a 40" Sony® LED TV with Blu-ray/DVD player.

**SONY®**



Mid-Cabin Half-Bath



Optional Heated Tile Flooring

## SET THE TONE

Crafted to promote a feeling of peace and tranquility, the 2016 London Aire master bathroom provides much more than the bare essentials. Take the 40" x 32" glass-door shower, accented by patterned solid-surface walls to create an especially relaxing space. Steps away, a dual-sink vanity and full-width mirror provide you with the perfect place to start your day.

When summer brings the heat, you'll stay comfortable thanks to a Fan-Tastic® vent with rain sensor. And if rising temperatures add more guests, London Aire's mid-cabin half-bath and full-wall rear wardrobe is there to help you play host to friends and family.





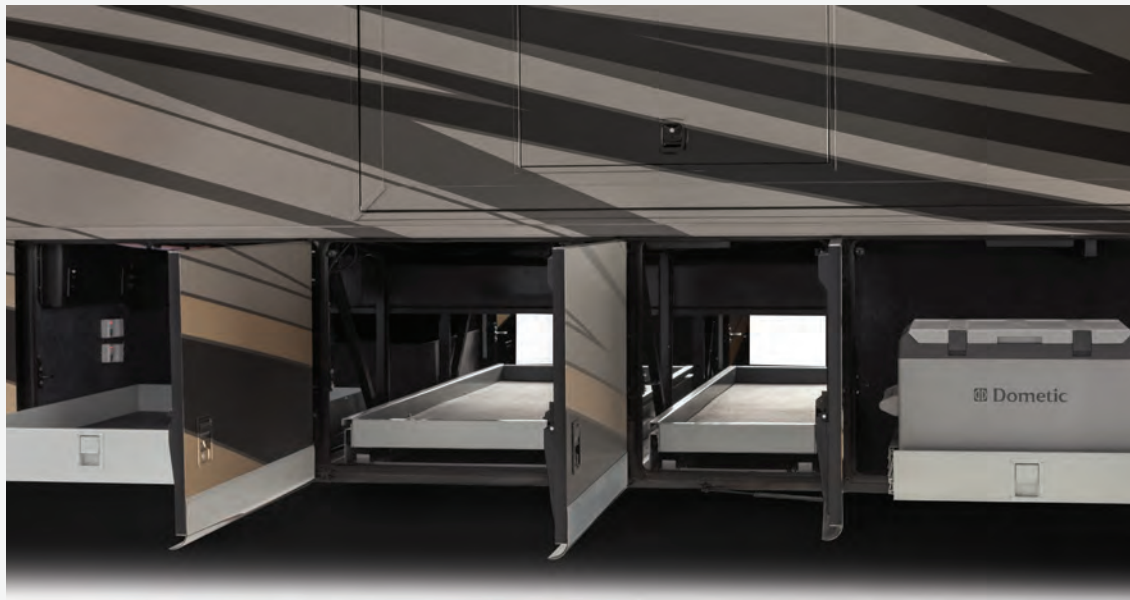
Dual-Sink Vanity with Full-Width Mirror



40" x 32" Shower with Optional Fold-Down Seat







## THE REAL DEAL

The 2016 London Aire lets you choose between two high-strength chassis – a standard Freightliner® SL tag axle chassis or an available Spartan® K3 tag axle chassis. Each receives further support from Newmar's all-new STAR Foundation, an advanced steel superstructure added to enhance chassis durability. Combined with an HWH® hydraulic leveling system and Newmar's Comfort Drive™ Steering System with Passive Steer tag axle technology, London Aire is engineered for years of travel.

London Aire was made to impress, and that means giving you a Girard® G2000 power side awning with wind sensor, remote control and LED lighting. It also means chrome convex mirrors with remote control, defrost, turn signals and side-view cameras.







Girard® Power Side Awning with LED Lighting





## EXTERIOR DÉCOR



HARBOR



FENIMORE



TWILIGHT



MYTHICAL

## INTERIOR DÉCOR



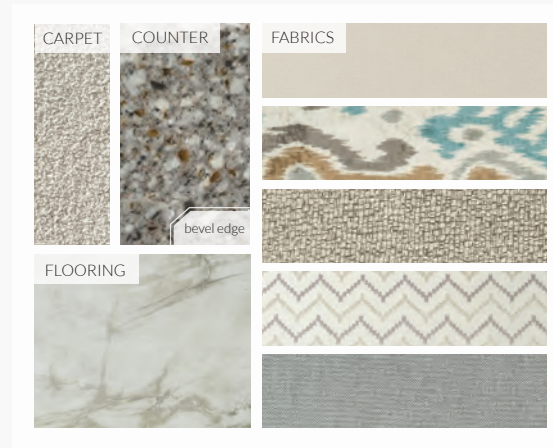
HATTERAS INTERIOR



TUNDRA INTERIOR



CITADEL INTERIOR



MYSTIC INTERIOR

## WOOD OPTIONS



WICKER GLAZED  
MAPLE



CARMEL GLAZED  
CHERRY



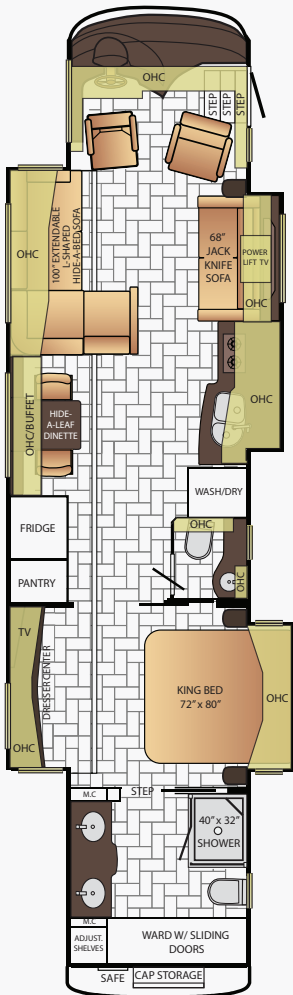
MANHATTAN  
GLAZED MAPLE



SABLE MAPLE

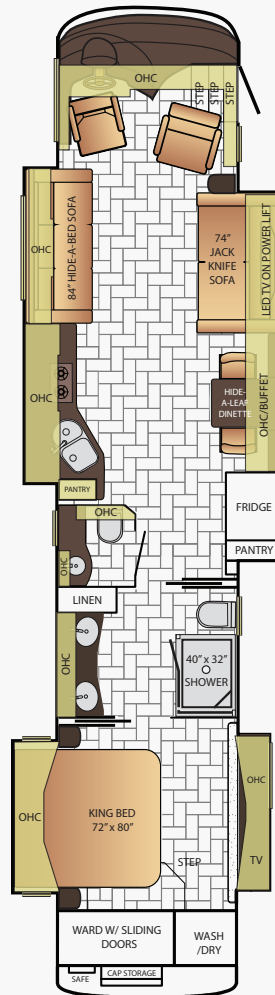


# FLOOR PLANS



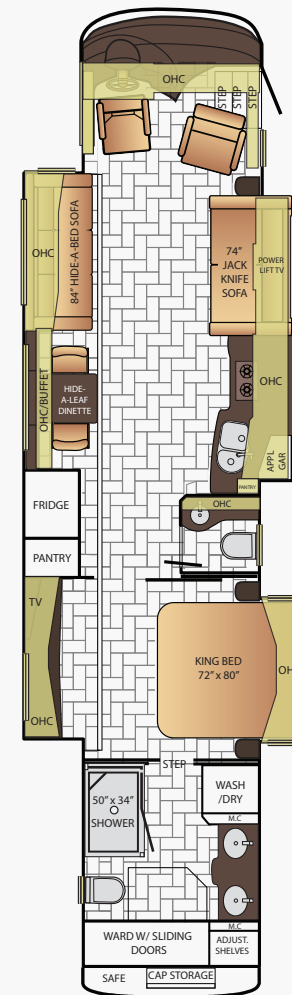
4503

App. Overall Length	44'11"
Width	101.5"
App. Overall Height	13'4"
Interior Width	95.5"
Interior Height	84"
Grey Tank	80 gal.
Sewage Tank	60 gal.
Water Tank	105 gal.
Propane Tank	22 gal.
Furnace	50,000 btu



4518

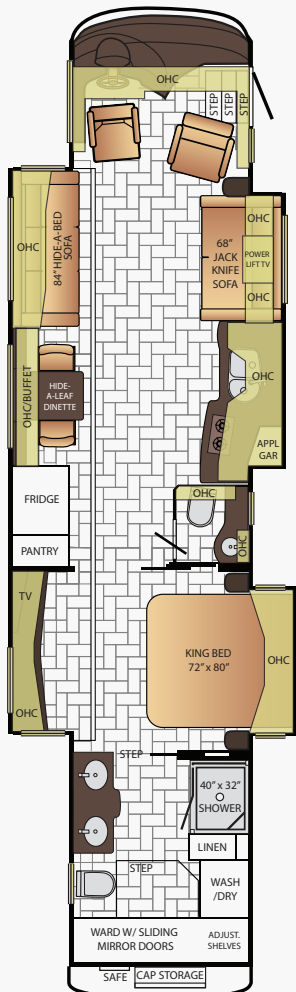
App. Overall Length	44'11"
Width	101.5"
App. Overall Height	13'4"
Interior Width	95.5"
Interior Height	84"
Grey Tank	80 gal.
Sewage Tank	60 gal.
Water Tank	105 gal.
Propane Tank	22 gal.
Furnace	50,000 btu



4519

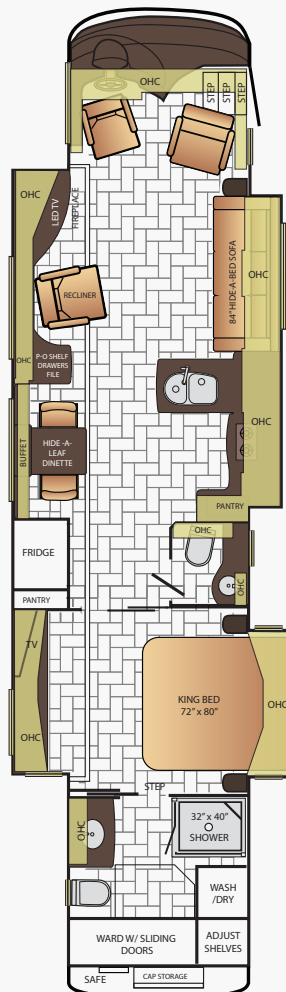
App. Overall Length	44'11"
Width	101.5"
App. Overall Height	13'4"
Interior Width	95.5"
Interior Height	84"
Grey Tank	80 gal.
Sewage Tank	60 gal.
Water Tank	105 gal.
Propane Tank	22 gal.
Furnace	50,000 btu

# FLOOR PLANS



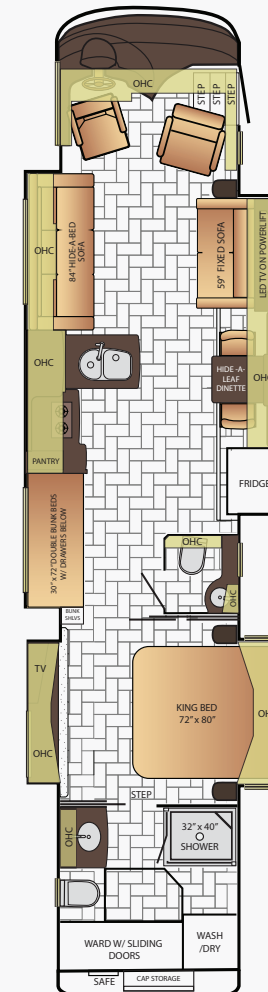
4553

App. Overall Length	44'11"
Width	101.5"
App. Overall Height	13'4"
Interior Width	95.5"
Interior Height	84"
Grey Tank	80 gal.
Sewage Tank	60 gal.
Water Tank	105 gal.
Propane Tank	22 gal.
Furnace	50,000 btu



4565

App. Overall Length	44'11"
Width	101.5"
App. Overall Height	13'4"
Interior Width	95.5"
Interior Height	84"
Grey Tank	80 gal.
Sewage Tank	60 gal.
Water Tank	105 gal.
Propane Tank	22 gal.
Furnace	50,000 btu



4598

App. Overall Length	44'11"
Width	101.5"
App. Overall Height	13'4"
Interior Width	95.5"
Interior Height	84"
Grey Tank	80 gal.
Sewage Tank	60 gal.
Water Tank	105 gal.
Propane Tank	22 gal.
Furnace	50,000 btu



# CONSTRUCTION & CHASSIS SPECIFICATIONS

Equipped with a standard Freightliner® SL tag axle chassis, London Aire also offers an optional Spartan® K3 tag axle chassis. Both feature an independent front suspension, HWH® hydraulic leveling system and support from Newmar's all-new STAR Foundation. Its tubular truss web frames and substructure beams

form a foundation stable enough to allow extensive pass-through storage. This allows London Aire to expand beyond its chassis footprint, creating extra living space. Its Cummins® ISX diesel engine produces 600 HP, delivering incredible maneuverability and power, even on steep inclines.

## Standard Specifications

Floor Plan	Engine HP	Axle Ratio	Fuel Cap.	Wheel Base	Front GAWR*	Rear GAWR*	Tag GAWR*	GVWR*	GCWR*	Freightliner Specific		Spartan Specific	
										App. UVW	App. NCC	App. UVW	App. NCC
4503	600	4.30	150 gal.	292+TAG	20,000 lb.	20,000 lb.	14,000 lb.	54,000 lb.	69,000 lb.	45,000 lb.	9,000 lb.	44,500 lb.	9,500 lb.
4518	600	4.30	150 gal.	292+TAG	20,000 lb.	20,000 lb.	14,000 lb.	54,000 lb.	69,000 lb.	44,800 lb.	9,200 lb.	44,200 lb.	9,800 lb.
4519	600	4.30	150 gal.	292+TAG	20,000 lb.	20,000 lb.	14,000 lb.	54,000 lb.	69,000 lb.	46,100 lb.	7,900 lb.	45,500 lb.	8,500 lb.
4553	600	4.30	150 gal.	292+TAG	20,000 lb.	20,000 lb.	14,000 lb.	54,000 lb.	69,000 lb.	45,600 lb.	8,400 lb.	45,000 lb.	9,000 lb.
4565	600	4.30	150 gal.	292+TAG	20,000 lb.	20,000 lb.	14,000 lb.	54,000 lb.	69,000 lb.	45,200 lb.	8,800 lb.	44,600 lb.	9,400 lb.
4598	600	4.30	150 gal.	292+TAG	20,000 lb.	20,000 lb.	14,000 lb.	54,000 lb.	69,000 lb.	45,200 lb.	8,800 lb.	44,600 lb.	9,400 lb.

Lengths, heights, widths and dry weights are approximate. Weight will vary based on optional equipment added to the above base weight.

**GAWR:** Gross Axle Weight Rating is the maximum permissible weight for an axle.

**GVWR:** Gross Vehicle Weight Rating is the maximum permissible weight for a fully loaded motor coach.

**GCWR:** Gross Combination Weight Rating is the value specified by the manufacturer of the vehicle as the maximum allowable loaded weight of this motor coach and any towed trailer or towed vehicle.

**UVW:** Unloaded Vehicle Weight is the weight of this motor coach as built at the factory with full fuel, engine oil and coolants. Does not include cargo, fresh water, propane gas or dealer-installed accessories.

**NCC:** Net Carrying Capacity is the maximum weight of all occupants, including the driver, personal belongings, food, fresh water, waste water, propane gas, tools, tongue weight of towed vehicle, dealer-installed accessories, etc., that can be carried by the motor coach.

*\*Specifications supplied by the chassis manufacturer.*

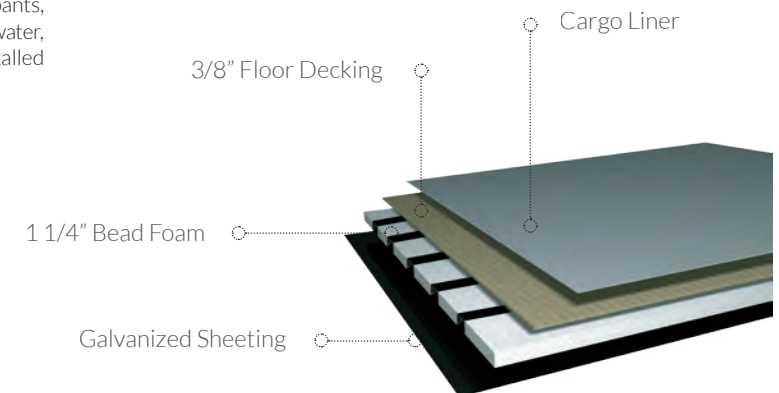
## London Aire R-Values:

**Roof R-Value = 24**

**Sidewall R-Value = 11**

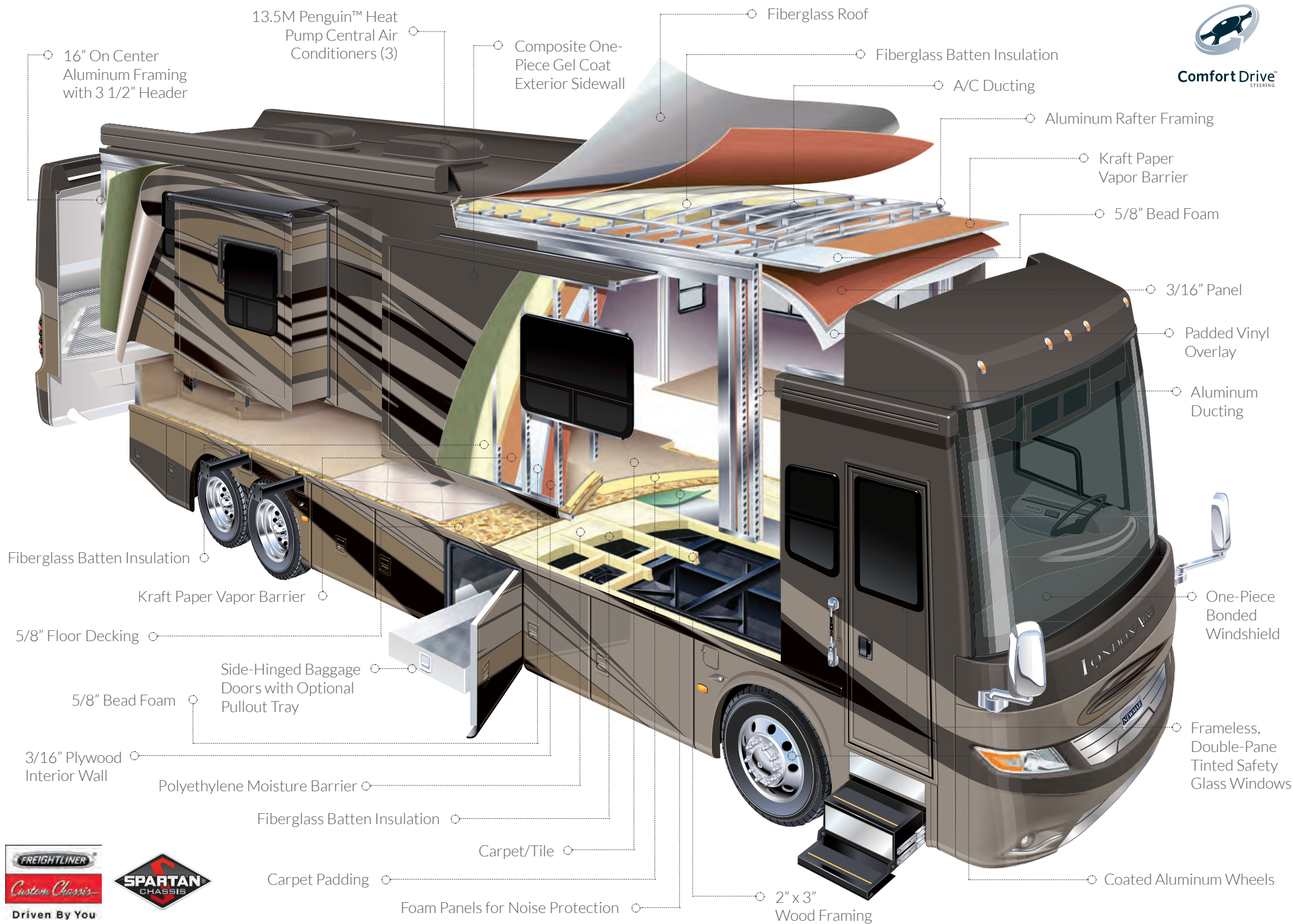
**Floor R-Value = 16**

**Basement R-Value = 4**





Comfort Drive  
STEERING



Standard

Optional



# FEATURES & OPTIONS



## CHASSIS FEATURES

Freightliner® Passive Steer Tag Axle SL Chassis with 600Hp ISX Cummins Engine  
Comfort Drive™ Steering With Adjustable Control  
Polished Aluminum Wheels  
Recessed Fuel Fills with Crossover to Fill from Either Side  
Back-Up Alarm  
Anti-Lock Braking System  
Electronic Chassis Information Center in Dash  
Air Leveling Control System

### OPTIONS

Spartan® Passive Steer Tag Axle K3 Chassis with 500 HP Cummins® ISX Engine  
Trip Travel Information  
Vorad® Adaptive Cruise System



## AIR CONDITIONING AND HEATING

Three 15M Penguin™ Heat Pump Air Conditioners with Remote Control Thermostat  
Hydronic Zone Diesel Heating System with Continuous Hot Water  
Wall-Mounted Heating and Air Conditioning Sensors  
Propane Gas Leak Detector  
Roof Air Conditioning Drainage System  
Driver and Passenger Dash Overhead Ventilation System

### OPTIONS

Electric Radiant Heat Installed Below Floor Tile



## APPLIANCES

30" Convection Microwave with Recessed Two-Burner Gas Cooktop  
Flush Gas Cooktop cover of Matching Countertop Material  
Norcold® 12 Cf. Refrigerator with Icemaker & Water Dispenser  
Prep for Two-Piece Washer/Dryer  
Fireplace in Living Area\*

### OPTIONS

Dishwasher in a Drawer Located Below Cooktop  
All Electric, Flush-Mount Induction Cooktop, Whirlpool® 19.7 Cf. Refrigerator, 4 Extra Batteries, 2800-Watt Inverter  
All Electric, Flush-Mount Kenyon® Cooktop, Whirlpool® 19.7 Cf. Refrigerator, 4 Extra Batteries, 2800-Watt Inverter  
Whirlpool® 19.7 Cf. Refrigerator with Two Extra Batteries  
Dometic® Freezer on Pullout Tray in Exterior Compartment  
Whirlpool® Two-Piece Stacked Washer/Dryer  
Central Vacuum with Tool Kit  
Dometic® 3.77 Cf. Freezer on Pullout Tray in Exterior Baggage Compartment



## AUDIO, VIDEO AND ACCESSORIES

Sony® LED TV & Blu-ray/DVD player in Living Area and Bedroom  
(Sizes Vary Per Floor Plan)  
Sony® 48" LED with Televator TV in Living Area\*  
Bose® Cinemate Home Theater System  
AM/FM/CD Dash Radio with Harman/JBL® 360-Watt Sound System  
with Subwoofer  
High Definition Wiring  
Color Rearview Monitor System with Audio  
Two Bedroom Radio Speakers  
Satellite Prep on Roof  
TV Jack and 110-Volt Receptor in Door-Side Exterior Storage Compartment  
Winegard® Digital Crank Up TV Antenna  
Infra-Red Repeater System for Operating Audio/Video Components

### OPTIONS

Sirius® Satellite Radio Capability (Does Not Include Monthly Subscription)  
Dash Radio with Touch Screen Navigation System  
Sony® 40" LED TV in Front Overhead  
48" Televator TV Behind Door-Side Non-Sleeper Fixed Sofa  
Exterior Entertainment Center in Sidewall with Sony® 40" LED TV and Soundbar  
Exterior Entertainment Center in Storage Compartment with 40" Sony® LED TV and Soundbar  
Two 11" LCD Flip-Down Monitors and DVD Players with Headphones, One at Each Bunk\*  
Winegard® Digital Power Lift TV Antenna  
Winegard® Automatic Satellite Dish  
KVH® In-Motion Dome-Shaped Satellite Dish

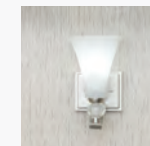


## CABINETS AND FURNITURE

Sable Maple Cabinetry with Mitered Raised Panel Glazed Doors  
Concealed Hinges on Cabinet Doors  
High-Polish Solid-Surface Countertop in Kitchen with Undermounted Stainless Steel Sink  
High-Polish Solid-Surface Countertop in Bathroom and Bedroom  
Villa® Ultra Leather Sofa and Front Seats with Integrated Seat Belts  
Six-Way Adjustable Heated Driver/Passenger Seats with Power Lumbar Support and Power Footrest  
Passenger Seat Work Station  
Pullout Pantry Shelves\*  
Cedar Paneling in Bedroom Wardrobe

### OPTIONS

Carmel Glazed Cherry Cabinets  
Manhattan Glazed Maple Cabinets  
Wicker Glazed Maple Cabinets  
Euro-Booth Dinette and Two Folding Chairs  
Off-Door Side Extenda L Sofa  
Extenda Flex Dinette  
Combination Desk/Dinette with Rollaway Table, 2 Fixed and 2 Folding Chairs  
Combination Desk/Dinette with Buffet Table, 2 Fixed and 2 Folding Chairs  
Door-Side Dormi Sofa with Air Mattress, Off-Door Side Extenda L-Sofa  
Door-Side Dormi Sofa with Air Mattress, Off-Door Side Recliners with Lampstand  
Two Off-Door Side Recliners with Lampstand & Door-Side Televator TV  
Sofa/Euro-Booth Dinette Ensemble  
Power Flip-Up Sofa in Bed Base with Sleep Number® Premier Air Mattress  
Sleep Number® Premier Air Mattress



## ELECTRICAL FEATURES

10.0 Kw Cummins® Onan® Diesel Quiet Series Generator on Hydraulic Slide-out Tray  
50-Amp Electrical Service with Flexible Cord and Automatic Transfer Switch  
12-Volt Auxiliary Receptor on Dashboard  
Four 6-Volt House Batteries on Pullout Tray

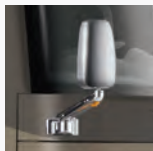


# FEATURES & OPTIONS

5-Watt Solar Panel to Charge Chassis Battery
3000-Watt Inverter
Midship Side Turn Signals
Lit Wardrobes
Interior Courtesy Lighting
Accent Lights in Feature Ceiling, Slide-out Fascia Trim, Lambrequins, Kitchen, Bed Base and Underneath Dash
Automatic Generator Start on Low Battery or Temperature Setting
Battery Disconnect Switch for House Battery
Emergency Engine Start Switch
Engine Block Heater
Exterior Security Lights
Manually Operated Hold-to-Run Slide-out Switch
USB Charger at Dinette and Bedroom Nightstand
LED Lighting in Exterior Storage Compartments, Controlled by an Interior Master Switch
LED Lighting Inside Pullout Pantry and Bathroom Lavatory Bases
Energy Management System
Power-Rewind Reel with 50' Cord
Recessed Docking Lights
Secondary Multiplex Touch Screen in Bedroom
Silverleaf Multiplex Electrical Wiring System
Solar Prep Wire from Roof to House Battery Compartment

## OPTIONS

Eight AGM House Batteries*
12.5 Kw Onan® Diesel Generator
LED Lights Installed Under Door-Side Slide-outs
Four Sunforce Flexible 95 Watt Solar Panels on Roof



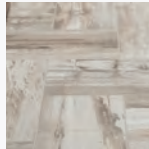
## EXTERIOR FEATURES

Full-Paint Masterpiece Finish™ with Cut & Buff and Nano Shield Protection on Front Cap
Convex Chrome Exterior Mirrors with Remote Control, Defrost, Turn Signals and Side-View Cameras
Chrome Power Baggage Door Locks, Keyless Entry Door with Touch Pad and Doorbell
Rear Protective Tow Guard
Stainless Steel Exterior Trim Pieces and Kick Panel at Entrance Door
Undercoating
Lit Exterior Storage Compartments with Cargo Liner
Automatic Step for Entrance Door

Rear Hitch for Towing Car
Hydraulic Leveling Jacks

## OPTIONS

Stainless Steel Trim Kit for Exterior Baggage Doors
Large Storage Tray with Access from One Side or Either Side
Large Storage Tray
Power Sliding Storage Tray

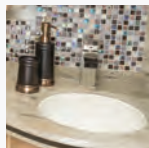


## INTERIOR FEATURES

Designer Feature Ceiling
Cathedral Ceiling with Added Height to Rear Bathroom Floor Plans*
Auto Motion Power Shades at Windshield, Driver & Passenger Side Windows
Auto Motion Power Window Shades and Lambrequins
Tile Floor in Kitchen, Bathroom, Bedroom and Living Areas
Interior Assist Handle at Main Entry Door
Hardwood Raised Panel Interior Passage Doors
Hardwood Window Sills
Shoe Storage Shelves Recessed into the Rear Cap Wardrobe
10 Bc Fire Extinguisher, Smoke Detector and Carbon Monoxide Detector

## OPTIONS

Safe Located in Bedroom Wardrobe
Silhouette Power Window Shades
Carpet in Bedroom in Place of Tile

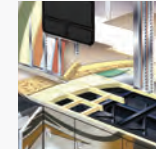


## PLUMBING AND BATH FEATURES

Demand Water System
Solid-Surface Shower Walls with Glass Door
Dometic® 321 China Bowl Stool or Macerator Stool*
Exterior Shower
Sewage Holding Tank Rinse
Water Filter for Entire Unit
Automatic Fill For Fresh Water Tank

## OPTIONS

Assist Handle in Shower
Fold-Down Shower Seat
Power Water Hose Reel
Hot Water Line to Generator Area
Black China Bowl Stools
RV Sani-Con System



## CONSTRUCTION FEATURES

Fiberglass Roof with Walkable Decking & Integrated Gutter Rail
Gel Coated Fiberglass Exterior Sidewalls, Front and Rear Caps
Aluminum-Frame Sidewalls & Roof Construction, 16" on Center
5/8" Foam Insulation Laminated in Sidewalls & Ceiling
Mechanical Lock Arms on All Slide-out Rooms
Polar Pak R19 Batten Insulation in Roof



## WINDOWS, AWNINGS AND VENTS

One-Piece Tinted Windshield
Frameless Double-Pane Tinted Safety Glass Windows
Fan-Tastic® Vent with Rain Sensor in Kitchen and Bathroom
Girard® G2000 Power Side Awning with Wind Sensor, Remote Control and LED Lights
Dometic® Slide-out Covers & Power Entrance Door Awning with LED Lights*
Skylight Above Shower*
Driver-Side Power Window
Egress Door in Rear Bathroom*
Hardwood Cover on Fan-Tastic® Vent in Kitchen

## OPTIONS

Additional Girard® G2000 Side Awning on Door Side
Two Nova Side Awnings, Slide-out Covers, Entrance Door & Power Window Awnings

*\*Check With Dealership On Floor Plan Availability*



## OUR PARTNERS

*Where the Finest Names in Quality and Performance are Along for the Ride*

To ensure that you experience only the best in comfort, control and unsurpassed convenience in our incomparable family of Luxury Coaches, Newmar partners with the most prestigious names in mobile lifestyle, entertainment and technology. These brands

are leaders in their fields and legends in providing customers with new, unsurpassed levels of quality and reliability. Best-in-class performance from names you can trust. At Newmar, that's our difference. And our promise.





## THE MILLER WAY

*Industry-Leading Quality,  
From Our Family to Yours*

For the Miller family, RVs are what we build because RVing is what we love. To us, the RV lifestyle is more than our business – it's our passion. Our customers choose Newmar time and time again because they trust in us, our products and our people.

I myself am proud to own a Dutch Star designed, assembled and backed by artisans, engineers and service specialists who represent the best our industry has to offer. Men and women who have spent an average of 13 years as members of the Newmar family. Without them, The Newmar Difference simply wouldn't exist.

Matt Miller  
*Newmar President, lifelong motor coach enthusiast*

# LONDONAIRE

## NEWMAR EXPRESS LIMITED WARRANTY

Every London Aire diesel motor coach is backed by Newmar's one-year limited warranty/unlimited miles. Ask your Newmar dealer for details.

## LIMITED FIVE-YEAR STRUCTURAL WARRANTY

If any part of your Newmar recreational vehicle superstructure (which is the steel/aluminum structure of the sidewall, roof or frame) fails to perform properly within five years from the date of purchase because of faulty workmanship or material supplied by Newmar, it will be repaired without charge for either parts or labor by Newmar. This structural warranty is available only to the original purchaser and is non-transferable.

Some features in our literature are optional. Colors and finishes are photographic representations. The actual materials may look different. Prices, specifications and floor plans are subject to change at Newmar's discretion, without prior notice or obligation. Please see your dealer for actual samples and specifications.



WHEN YOU KNOW THE DIFFERENCE<sup>SM</sup>